



January 2007

Montgomery County Woodturners

www.montgomerycountywoodturners.org

Volume 2007, Issue 1

Special points of interest:

- MCW Chapter Launch and Formation
- Chapter Officers
- Membership Application Form
- Membership Interest Profile
- Contacts

Inside this issue:

- Business Meeting Discussion **2**
- Recognition and Thanks **3**
- Next Meeting **4**
- New Members **5**
- President's Perspective **6**
- Editor's Viewpoint **8**
- Chapter Activities **9**

MCW Chapter Launch and Official Chapter Formation

The inaugural meeting of the Montgomery County Woodturners (MCW) chapter was held on Thursday, January 4, 2007, at the Woodworkers Club in Rockville, MD, with twenty seven attendees. Attendees reflected a broad spectrum of experiences and interests from novices to full-time professionals.

Phil Brown reviewed the results of the exploratory survey and used it as a basis for discussion and reaching agreement in forming and launching the new chapter.

Consensus agreement was reached on the following organizational items:

The formal name of the chapter will be Montgomery County Woodturners (MCW).

2007 Chapter Officers who serve as the Board Members are:

President	Phil Brown
Vice President	Clif Poodry
Program Chair	Eliot Feldman
Secretary	(open)
Membership	Stuart Glickman
Treasurer	Doug Pearson
Newsletter Editor	Bert Bleckwenn

Chapter Support Volunteers are:

Web Master	Doug Pearson
Group Buys	Arthur Mensch
Mentor Program	Donald Couchman
Lending Library	Clif Poodry

We will seek formal recognition as a local chapter of the American Association of Woodturners (AAW). Phil Brown will submit officer's names to AAW by March 1st in order for the chapter to be recognized and be published in the 2007 AAW Membership Directory.

Meetings will be held on the Thursday before the second Saturday of each month from 7:00-9:00 PM at the Woodworkers Club in Rockville, MD. The currently scheduled dates for 2007 will be:

January 4	July 12
February 8	August 9
March 8	September 6
April 12	October 11
May 10	November 8
June 7	December 6 or 13

An alternative location and meeting times/dates will be considered once the new VisArts center in Rockville, Maryland, is completed as VisArts has expressed an interest in hosting our chapter.

Annual Dues will be \$20.00

Participation in demonstrations which are provided by out-of-town demonstrators will be targeted at \$10.00. Any local chapter demonstrators must be current members of AAW in good standing (dues paid) to ensure coverage under AAW member insurance.

A bank account in the name of the chapter will be set up with Doug Pearson, Phil Brown and Clif Poodry as authorized signatories for the purpose of collecting dues, covering expenses and dispensing funds as authorized by the officers.

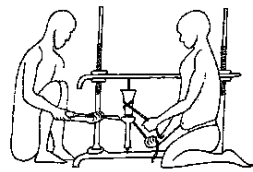
Business Meeting Discussion

Other discussion topics during our initial business meeting included:

- The Secretary position is still open and needs a volunteer. Contact Phil Brown if you are willing to volunteer.
- A lending library was discussed and encouraged. Clif Poodry has volunteered to act as the official lending library custodian. If you have extra DVDs, CDs or VCRs of woodturning interest and are willing to donate them to the chapter, this will help get our library started. Please see Clif at the next chapter meeting if you have something to donate.
- Additional funding ideas beyond membership dues to help support the setup of our lending library and for other chapter education and support needs were discussed:
 - ◇ Set up a silent auction where members can contribute items of interest such as wood, unwanted tools, finishing supplies, books, videos, etc. See the Silent Auction topic elsewhere in this newsletter.
 - ◇ Seek grants from the AAW national organization or other organizations to fund a key purchase such as a lathe or other educational needs.
- Demo program volunteers are being sought for future meetings. We already have the next three months of demonstration programs in the works. Contact Eliot Feldman, if you are willing to share and demonstrate a technique to help get us started.
- Mention of two local turning patrons was discussed and possibility of making arrangements to view their private collections:
 - ◇ Fleur and Charles Bresler who have a local collection of turned art. They are sponsoring the establishment of a wood turning teaching studio in the new VisArts center in Rockville.
 - ◇ Jane and Arthur Mason who donated portions of their turned art collection to the Mint Museum of Craft + Art in Charlotte, NC and they continue to have a collection in their home. *Turning Wood into Art – The Jane and Arthur Mason Collection* is a book that captures this collection and provides a great backdrop to their discovery and nurturing of turned objects as an art form. If you are a traveler to Seattle by March 11, 2007, you can see this same Mint Museum collection on exhibit at the Bellevue Arts Museum in Bellevue, WA.
- Everyone is encouraged to join the American Association of Woodturners, our national organization. Several who already belong indicate that the AAW journal by itself is worth the \$40.00 annual membership dues. This last year, a DVD of the fundamentals of sharpening was also included which is great for the novices in our chapter. Membership includes receipt of the quarterly AAW Journal and the annual AAW Membership Directory which provides member listings, website addresses, and other sources of information relating to woodturning. Go to the AAW national website at www.woodturner.org for further details.

(continued on Page 3)

Egyptian Lathe
Circa 300 B.C.



Business Meeting Discussion (continued from page 2)

- Phil Brown mentioned the VisArts center in his survey as a possible future meeting site for the chapter once the new facility is completed later this year. This was formerly known as the Rockville Arts Place and will occupy the second and third floors of the new space in the art center building on Beall Avenue now under construction next to the new library in downtown Rockville. For further details, go to www.VisArtsCenter.org
- If you are interested in a user-friendly forum devoted to turning, members suggested you visit www.woodcentral.com and seek out the turning message board.
- Ideas for capturing demos on video/DVD and/or displaying them on a large screen format during demonstrations were discussed. The officers will explore options to help improve membership experiences.
- One of our members solicited advice for a good starter book. The recommendation was Richard Raffan's latest book published by the Taunton Press. It covers the full gamut from wood selection, equipment and all the basics including safety.

Members' Show and Tell

We had a great showing of member work representing a broad range of forms and techniques. Everyone is encouraged to bring their latest turning to each meeting and share so we can learn from each other. We hope to capture digital images during future meetings and feature them in a gallery section on our local chapter website as well as some highlights in the newsletter .

Recognition and Thanks

Thanks to Phil Brown for his initiative in seeking us all out, soliciting the initial set of officers and volunteers and leading the formation of our new chapter.

Also, many thanks to Nick Suttora, owner of the Rockville Woodworkers Club for graciously hosting our inaugural meeting and supporting future meetings in 2007. He has offered to turn off equipment in the woodworking club facilities during our meetings in order for us to meet and demo in the larger area while woodworker club members can continue to be present doing hand work. He has also offered to provide a 10% discount on woodturning related items excluding power tools to attendees on the day of our meetings just prior to or following our meetings. See the message from our meeting host at <http://www.woodworkersclub.com/Woodturning%20Meeting.htm> for the specific details of this offer.



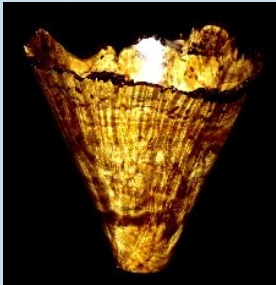
How to Contact Us at The Woodworkers Club?

4950 Wyaconda Road Rockville, MD 20852	Hours of Operation Monday - Friday 10:00 am - 9:00 pm
Phone: 301-984-9033	Saturday 10:00 am - 6:00 pm
Fax: 301-984-8125	Sunday 10:00 am - 5:00 pm

email: woodworkersclub@verizon.net

*... many thanks to
Nick Suttora, owner of
the Rockville
Woodworkers Club...*

Phil Brown Creations



Next Meeting

The next meeting will be:

Date: Thursday, February 8, 2007
 Time: 7:00-9:00 PM
 Location: Woodworkers Club
 4950 Wyaconda Road
 Rockville, MD 20853
 (301) 984-9033

Agenda

- 6:45 -7:00 PM Arrive with a chair or stool to sit on, get a name tag, bring something for the silent auction and place a bid sheet with it, place your bids, bring piece for Show & Tell, and meet chapter members.
- 7:00 - 7:15 PM Brief business meeting and Show & Tell presentation
- 7:15 - 8:50 PM Program: Green and Spalted Wood - Start to Finish: Phil Brown's Techniques
- 8:50 - 9:00 PM Pay for and retrieve your silent auction items, pack up, put the lathe and space back in order.

Program

Phil Brown will discuss and demonstrate techniques he applies in turning green and spalted wood, including his designs, encouraging spalting, preparing turning blanks, drying flitches and roughed-out bowls, remounting on the lathe, turning thin, sanding, epoxy treatments, holding devices, and finishing experience - if there is time for all of that. A hand-out will be available.

Program Demonstrator Profile

Building on a life-long experience with wood, Phil Brown began turning 32 years ago with the aid of a book. Workshops with leading wood turners and several conferences of the American Association of Woodturners reinforced techniques and skills. Acceptance in over 60 juried and invitational shows, three solo shows, and numerous private sales have contributed to his continuing growth. While not formally trained in art and design, searching for form has always been paramount to Phil. Inspiration and ideas have come from glass and clay artists, selected oriental forms, well known sculptors and leading wood turners.

Check out Phil's website at: <http://www.silverhawk.com/crafts/brown/welcome.html> which is the source for examples of his work depicted on this page.

Future Planned Meeting Programs (Eliot Feldman)

- March Surface Treatments and Other Enhancements - Doug Pearson
- April TBD
- May Sanding Techniques - Clif Poody

New Members (Stuart Glickman)

<u>Member Name</u>	<u>Location</u>
Tim Aley	Gaithersburg
Lynn Bailets	Kensington
Bert Bleckwenn	Bethesda
Kathy Bleckwenn	Bethesda
Phil Brown	Bethesda
Bob Browning	Olney
Hal Burdette	Silver Spring
Bill Casson	Potomac
Brent Clayton	Germantown
Donald Couchman	Gaithersburg
Eliot Feldman	Bethesda
David Fry	Cabin John
Stuart Glickman	Rockville
Gary Guenther	Silver Spring
David Jacobowitz	Bethesda
Jerry Kaplan	Bethesda
Gus Kotting	Brookeville
Paul Mazzi	Cabin John
Mark McBride	Silver Spring
Arthur Mensch	N Potomac
Doug Pearson	Bethesda
Clif Poodry	Bethesda
Robert Serino	Silver Spring
Allan Starr	Rockville
Bob Stroman	Bethesda
Richard Webster	Rockville
Ilya Zavorin	Rockville
Denis Zegar	Columbia

***Welcome
to all the
charter members!***

Help out a fellow turner!

A few members or potential members cannot drive at night, or for another reason need a ride to our Thursday night meetings. If you don't find another member in our membership list near your community, let Don Couchman know of your need. He will help in locating a member to provide transportation.

Membership Application Form

An MCW Membership Application form is included at the back of the newsletter for passing on to other woodturners. In addition, for those of you who have already paid your dues, we would still like you to complete the form and give it to Stuart Glickman so we have your correct address, phone number email id and any personal website that you might use to showcase your work. We need this to establish the mailing list for our newsletter distribution process. Please give to Stuart Glickman.

MCW Member Interest Profile

Express your interests and needs. We encourage everyone to complete an MCW Member Interest Profile which is included in the newsletter. This would be of great benefit to the officers as they develop programs to meet everyone's needs. We will also share a summary profile of the chapter in a future newsletter so we can all see where our specific interests reside.

Please take the time to complete your profile and provide to Stuart Glickman.

President's Perspective (Phil Brown)

I am very pleased with the success of our organizational meeting on January 4th. Our treasurer, Doug Pearson, reported that he collected \$460 from 23 members on that first night. It almost seemed too easy. But you turners made it happen. You seem wonderfully motivated to make MCW function successfully by joining and by eight people volunteering to take on various responsibilities. Numerous people voiced their pleasure with the option of a place to meet closer to home.

Thanks to Clif Poodry for arranging our meeting place with the Woodworkers Club.

Eliot Feldman asked about my vision for the chapter. I hope that it will create a rich and varied learning environment, provide encouragement and motivation to develop your designs and turning skills, and identify opportunities to exhibit and sell your work. Your continuing voluntary efforts will contribute to making MCW beneficial for all members. I hope everyone who volunteers finds their effort fun, not a burden - for then it is time to get help, make changes, or find a replacement.

After VisArts opens, I look forward to cooperating with them in sponsoring single or multi-day workshops with leading turners. I hope we can cooperate with other area AAW chapters in bringing demonstrators to the DC area. Through workshops and meetings, we can complement other area chapters by increasing the incentive for demonstrators to come, and by expanding opportunities for all turners to see these out-of-town demonstrators at multiple club locations.

Speaking of volunteers, we still need to fill the following positions, particularly the first.

Secretary:

Record and report on decisions made during our monthly meetings and by the board in a brief Newsletter article, along with announcements of importance to the membership. But, there is no need for blow by blow minutes of meetings, just the key highlights and decisions. There will also be a need for an occasional letter or card to send, and possibly special work as we complete our bylaws and any other one-time initialization tasks. If willing, you could also help in applying for an AAW education grant for the chapter.

Publicity/Show Director:

Seek opportunities to inform other woodturners that MCW is here and organize wood-turning demonstrations by MCW members at wood equipment shows in MD, VA or DC. Possibly team up with other nearby AAW chapters for demonstrations. Seek opportunities to list MCW on art center and county information web sites.

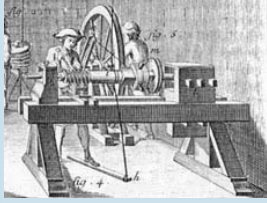
Exhibit Director and Committee:

Become educated about member's work (starting with facilitating the show & tell at each meeting) and their desires to exhibit, look for opportunities and apply to exhibit turned wood in Montgomery County and elsewhere (libraries, art centers, local museums, schools, community centers, etc.), and organize, set up, and take down those exhibits. Possibly cooperate with other AAW chapters in organizing exhibits. Announce in the Newsletter local juried exhibits to which members could individually apply. There is always a need for community outreach to inform the public of what wood turning is all about.

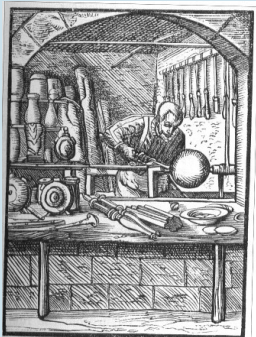
Logo Designer:

Help the web master and newsletter editor in developing a common look and image for our chapter. If you have ideas, send us a sketch of your idea for a logo. Ask an artist friend to develop a sketch for us.

(continued on page 7)



***“It almost
seemed
too easy”***



President's Perspective (continued from page 6)

Our Newsletter Editor, Bert Bleckwenn, has been bubbling with suggestions for newsletter content. Here are several of his ideas, and any one of them could use an additional volunteer to take them on. Contact Bert directly, if interested.

- Member Profiles & Interviews - could also be placed on the MCW web site.
- Member Surveys – Skill, experience, education, training, techniques, lathes, tools, books, web sites, forums, other organizations, interests, issues, and contributions.
- Shop Setups and Local Tours - we could do this on a Saturday or Sunday.
- Upcoming Events / Calendar
- Local Resources – stores, sources of wood, galleries, classes, personal instruction
- Internet Sources – catalogs, education, forums, magazines (also see your AAW resource directory)
- Book Reviews
- Novice Corner
- Professional Focus
- Skill Enhancement - potential future function in the VisArts woodturning studio.
- AAW Annual Symposium Reviews and Pictures

I hope to see you (and meet you) at our February 8th meeting. Enjoy your wood turning in the meantime!

Member Representation in Galleries, Exhibits and Shows

Sansar

Phil Brown, Eliot Feldman and David Fry currently have their work represented and for sale at Sansar. Whenever you are in the Bethesda downtown area, go check them out. Sansar is located at 4805 Bethesda Avenue, Bethesda, MD 20814.

Touchstone Gallery

A curly and spalted red maple vessel by Phil Brown was juried into the *9th Annual All-Media Exhibition*, open February 7 to March 3, 2007 at Touchstone Gallery, 406 7th St NW (2nd floor), Washington DC. Hours are Wednesday - Friday 11-5, and Saturday - Sunday 12-5.

Senior Artists Alliance

Stuart Glickman and David Jacobowitz have turnings in a Senior Artists Alliance show at Glenview Mansion at the Rockville Mansion, 603 Edmonston Drive, Rockville, MD, currently on display through January 30.

Stuart Glickman and David Jacobowitz also have turnings in another Senior Artists Alliance exhibit at the Sandy Spring Museum, 17901 Bentley Road, Sandy Spring, MD, through March 28.

Gallery of Mountain Secrets

Clif Poodry sells most of his work through The Gallery of Mountain Secrets in Monterey VA. The Gallery is located at Main St & State Route 250, Monterey, VA.

Editor's Viewpoint (Bert Bleckwenn)

I was very excited to see such a broad range of experiences and interests across the spectrum of our founding members. It tells me that we each have a great opportunity to learn from each other no matter what our experience level and an unselfish willingness to share our ideas.

Since there were many fairly new to turning, let me share with you my own experience regarding the black hole that is the world of woodturning drawing you into its snare!

I first got hooked in the mid-80's watching one of Roy Underhill's shows on PBS where he was demonstrating on a treadle lathe. Oh, I can do that and off I went and built a treadle lathe from Sears parts, leather belt and other assorted components. It worked great... for 30 seconds... until the puddle of sweat formed below the treadle! But that was enough to hook me.

Shortly, I proceeded to a commercial lathe (Record table top model) and subsequently moved on to a full size Nova lathe with complete support from my wife, Kathy. Since she was so supportive, I then had to augment the lathe collection by giving her a "Christmas present" of a variable speed Jet mini-lathe.

Along the way, Kathy and I managed to attend three AAW annual woodturning symposiums and a one week turning class in Arrowmont. We also joined AAW and the local Capital Area Woodturners chapter for five years. So, I'm now at the point of being knowledgeable enough to be dangerous but unfortunately, still not proficient enough as a full-time career still restricts me.

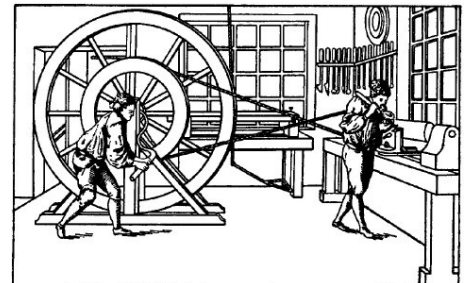
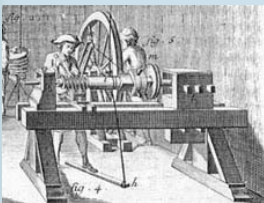
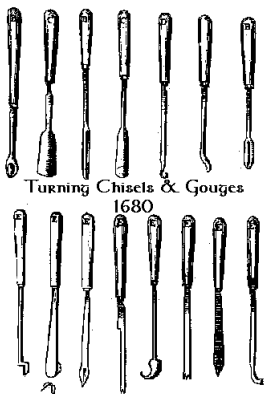
So, as retirement looms, we've just recently moved from a house into an apartment with my workshop mostly in storage. So, with my turning opportunities somewhat restricted, I'm using the newsletter role as a way to stay connected while planning for an eventual dedicated wood studio and who knows, maybe a fifth lathe. See what you are getting yourself into!

In the meantime, I'm looking forward to supporting our chapter as the newsletter editor along with learning and sharing experiences with my fellow members.

If you have suggestions for an appropriate official name for our newsletter, chapter logo, suggested topics of interest or are willing to contribute an article, please contact me. If you would like to contribute an article, don't worry about layout, style or even what format to send to me. As editor, I'll take your drafts in any form such as plain email text, any word processing format and even hand written drafts and edit them appropriately. It's your ideas, content and passion that count!

I welcome any feedback regarding the overall newsletter content and format. Drop me a note at bableck@gmail.com

**"See what you
are getting
yourself into!"**



Chapter Activities

Silent Auction

We will launch a silent auction of donated items to benefit Montgomery County Woodturners (MCW) at our February meeting. You are welcome to donate items which you believe someone else might purchase, such as wood, woodturning/woodworking magazines, books, tools, etc.

Bid forms will be available on which to list your item, your name and a suggested opening minimum bid price. Please bring your item(s) and complete the bid form before 7 PM. Bidding will close by 8:30 PM, or at the end of the demo program if it ends earlier, with a line crossing out further bidding space. Doug Pearson, Treasurer, will be available to collect the winning bid amount as you leave with your new treasure and before 9 PM when the WoodWorkers Club closes. If there is no bid on your donation, please remove the item when you leave.

Group Buys (Authur Mensch)

If you have any suggestions for types of items (sandpaper, superglue, log sealer, etc.) that you would be interested in, please let Art know.

Mentor Program (Donald Couchman)

Do you long for one-on-one help with your turning skills or problems? If so, then you can be named a mentee. Or, are you willing to occasionally coach another turner, either at your shop or at the other person's shop, and supplement that help by answering questions over the phone? If so, then you can be a mentor. We want to get the mentee and mentor together. Let Don know of your need and of your willingness to help. We will have a sign up sheet at the meeting. He will look for a mentor among MCW members to match up with those needing help. You can also contact Don at 301-963-6770 or by email at bigcouch@aol.com. This is an on going program about which we will occasionally highlight and remind members of this ongoing great learning and sharing opportunity.

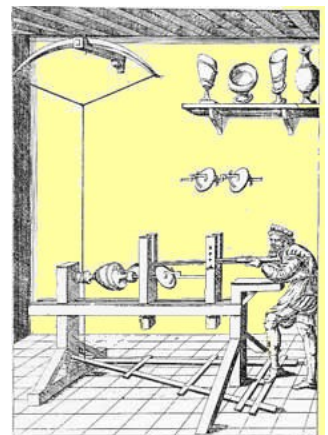
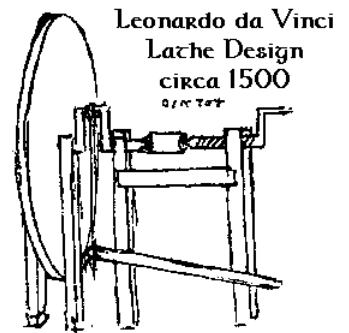
Website Development (Doug Pearson)

Our local chapter website is up and running thanks to Doug Pearson's efforts. We currently have six sections: Home, About Us, Newsletter, Membership, Meeting Times and Map, Gallery and Contact Us. Check it out at:

www.montgomerycountywoodturners.org

Exhibit Opportunity

Applications are available for a juried exhibit of contemporary craft-art objects at Strathmore Hall, North Bethesda, MD, that will be exhibited from May 26 to July 6, 2007. Your entry form must be submitted by March 15, 2007. This exhibit is sponsored by the Creative Crafts Council (CCC), a volunteer group of representatives of craft guilds of all media, except wood, in the metropolitan area. However wood is welcome at a non-member fee of \$40 per application. Jurying will be by three local collector-members of the James Renwick Alliance, which is the support organization for the Smithsonian Renwick Gallery at 17th & Penn Ave NW. Your wood object should be well designed, original, and considered contemporary, not a copy or reproduction of early American styles or antiques which are unlikely to be juried in. Applications are available from Phil Brown (while the supply lasts), from Tony Glander at tony@fitzpatrickglass.com, and when posted at <http://www.creativecraftscouncil.org/>



**Montgomery County
Woodturners Newsletter**

Newsletter Editor:
Bert Bleckwenn
Phone: 301-718-1850
email: bableck@gmail.com

Montgomery County Woodturners
- A local chapter of the American
Association of Woodturners (AAW)



Next Meeting

Date: Thursday, February 8, 2007
Time: 7:00-9:00 PM
Location: Woodworkers Club
4950 Wyaconda Road
Rockville, MD 20853
Phone: (301) 984-9033

We're on the Web at:

www.montgomerycountywoodturners.org

MCW Contact Information

Officers

President	Phil Brown	philbrown@comcast.net	301-767-9863
Vice President	Clif Poodry	cpoodry@aol.com	301-530-4501
Program Chair	Eliot Feldman	eliot@mathtechinc.com	301-493-9666
Secretary	(open)		
Membership	Stuart Glickman	sglickman@compuserve.com	301-279-2355
Treasurer	Doug Pearson	dspearson@verizon.net	301-229-6395
Newsletter Editor	Bert Bleckwenn	bableck@gmail.com	301-718-1850

Volunteers

Mentor Program	Donald Couchman	bigcouch@aol.com	301-948-4849
Group Buys	Arthur Mensch	jamensch@aol.com	301-840-9378
Web Master	Doug Pearson	dspearson@verizon.net	301-229-6395
Lending Library	Clif Poodry	cpoodry@aol.com	301-530-4501

Membership Application Form

Montgomery County Woodturners (MCW)

Please print and mail with check for \$20.00* (payable to MCW) to:

Stuart Glickman, MCW Membership
2896 Glenora Lane
Rockville, MD 20850-3053

Name _____

Address _____

City _____ **State** _____ **Zip** _____

Phone(s) _____

Email _____

Website _____

*New membership in the 2nd quarter \$15, 3rd quarter \$10, and 4th quarter \$5. Renewals \$20.

Your Experience Level:

Beginner ___ Novice ___ intermediate ___ Advanced ___ Professional ___

Current Member of AAW?

Yes ___ No ___

Expertise and experiences you are willing to share

(check all that apply or describe other woodturning expertise you are willing to share)

___ Spindle turning

___ Bowls - roughing green wood

___ Bowls - turning dry wood or roughed blanks

___ Hollow vessels

___ Glued segmented vessels

___ Safety and/or wood toxicity

___ Sharpening and Honing

___ Design

___ Marketing

___ Digital Photography

___ Other _____

MCW Member Interest Profile

Areas of Interest (select and number your top 5-10 areas of interest with 1 being your highest interest area. The profile will be used to seek out programs of interest and newsletter article content.)

Member Name: _____

Types of Turning

- Bowl or vessel turning
- Hollow turning
- Spindle turning
- Segmented turning
- Turning for furniture
- Other (describe: _____)

Turning Tools and their Usage

- Bowl gouge
- Spindle gouge
- Skew chisel
- Parting tool
- Scraper
- Beading tool
- Ring tool
- Hook tool
- Hollowing tool
- Threading tool
- Other (describe: _____)

Mounting Tools and Techniques

- Between centers
- Faceplates
- Machine Chucks
- Jamb Chuck
- Vacuum chuck
- Other (describe: _____)

Sharpening

- Sharpening
- Honing

Dust Control

- Dust control

Material Identification and Preparation

- Locating wood
- Selecting wood
- Harvesting wood
- Preparing wood
- Green wood
- Dry wood
- Spalted wood
- Turning other materials (metal, plastic, etc.)
- Other (describe: _____)

Surface Preparation

- Surface preparation
- Sanding
- Polishing
- Surface texturing
- Carving
- Inlay

Finishing

- Finishing
- Staining and coloring
- Other (describe: _____)

Professional Growth

- Exhibiting
- Marketing
- Demonstrating
- Teaching
- Photographing
- Portfolio development
- Going professional
- Other (describe: _____)

Lathes

- Lathe selection
- Lathe enhancements

Turning Shop/Studio

- Design and layout
- Efficiency
- Safety

The Frugal Turner

- Found wood
- Maximizing use of wood
- Making tools
- Making jigs
- Making finishes

Other Turning Resources

- Books
- Videos
- Schools
- Symposiums (national, regional)
- Galleries & Exhibits
- Chapters
- Stores
- Catalogues
- Websites
- Forums, Blogs

Other

- (describe: _____)

Return completed profile in person or by mail to:

Stuart Glickman, MCW Membership
2896 Glenora Lane
Rockville, MD 20850-3053