



MCW Newsletter

May 2007

Montgomery County Woodturners

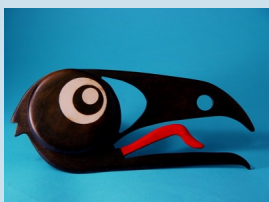
www.montgomerycountywoodturners.org

Volume 2007, Issue 4

MCW Newsletter

Page 1

Clif Poodry Creations



May Meeting and Demonstration (Eliot Feldman)

The next meeting will be:

Date: Thursday, May 10, 2007
Time: 7:00-9:00 PM
Location: Woodworkers Club
4950 Wyaconda Road
Rockville, MD 20853
(301) 984-9033



Agenda

- | | |
|----------------|---|
| 6:45 - 7:00 PM | Bring a chair, get a name tag, donate to the silent auction, bid on a silent auction item, bring a turned piece for Show & Tell, and meet fellow members. |
| 7:00 - 7:15 PM | Brief business meeting and Show & Tell |
| 7:15 - 8:50 PM | Program: <i>Sanding Techniques</i> by Clif Poodry |
| 8:50 - 9:00 PM | Pay for and retrieve your silent auction items, pack up, put the lathe and space back in order. |

Program



Clif Poodry will demonstrate how he makes his spirit vessels and use it as an opportunity to demonstrate an important aspect of final preparation, sanding. Sanding is the bane of woodturners. After all, we call ourselves wood turners not wood sanders. Yet the final smoothing of the surface of a turned piece is generally sanded to some extent and the quality of that finish can distinguish the craftsman from the beginner. Clif Poodry will share his experience in this inelegant but critical aspect of woodturning. He will discuss the wood, the sanding materials, the tools, sanding sealers, dust protection and importantly, advantages of various suppliers.



Program Demonstrator Profile

See Clif's expanded Member profile on page 16.

Check out more examples of his work at:
<http://homepage.mac.com/cpoodry/PhotoAlbum.html>



Special points of interest:

- First Cut
- Member Profile
- More Reading and Resources

Inside this issue:

May Meeting & Demonstration	1
Business Meeting	2
Member Information	3-4
Safety Tips	5
President's Perspective	6-7
Future Programs	7
Editor's Viewpoint	8
Website Development	9
April's Demonstration	10-11
Exhibits	11
First Cut	12
YMMV	13
Lending Library	14-15
Conferences	15
Member Profile Clif Poodry	16
More Reading & Resources	17
Chapter Contacts	18

Business Meeting Minutes (Gary Guenther)

At the April business meeting, the topics discussed and decisions made were:

1) MCW President Phil Brown greeted new members and the first-time attendees who introduced themselves. 25 people attended the April meeting. Three new members signed up, bringing our current membership total to 50. This is very encouraging for a club less than 4 months old.

Phil presented a Certificate of Appreciation to Doug Pearson for his dedication and hard work in designing, implementing, augmenting, and maintaining the MCW web site (www.montgomerycountywoodturners.org). Members are encouraged to view it regularly and to submit their own items for the Classifieds and to the Tips section (titled "YMMV"), as well as personal links, photos, etc. As the author of the YMMV section, I would like to request that everyone send in at least one tip via email to ymmv.mcw@att.net or via the link on the YMMV web page. We all have our little jigs and tricks that others would enjoy trying. Let's hear about them.

A Get Well card was circulated for signing for our Newsletter Editor, Bert Bleckwenn, who was under the weather. Welcome back Bert!

The MCW logo competition was postponed until next month. Members are encouraged to draw a sketch and submit it at the next meeting.

Phil reminded us that reasonably experienced Members are encouraged to sign up to serve as Mentors to our growing number of beginning turners. One can provide assistance at many levels, including email and telephone, as well as in-person mentoring support. If you need help or would like to ask some questions, please contact our Mentor Program Leader, Don Couchman, to be assigned a Mentor.

Phil posed the question about the desirability of getting Demonstrators whom we may have previously seen at CAW meetings. The consensus of the group was positive.

Phil reminded Members about the availability of books and videos in our impressive and growing Lending Library, which is managed by Clif Poodry, and asked for more contributions.

2) MCW Vice President Clif Poodry officiated the Show & Tell period. A number of interesting and attractive pieces were presented and discussed. Of particular note was a segmented platter by Richard Webster. Further details can be viewed on the MCW web site's April 2007 S&T Gallery page. Eliot Feldman showed a thin, bleached, hollow form made from a birch blank he purchased at the March Silent Auction as well.



3) Speaking of the Silent Auction, only two members donated items for the April meeting. The sale of these items added \$16 to the MCW treasury, but, more importantly, provided some nice wood for people who need it. We hope those of you who purchased these blanks will bring the results to a future Show & Tell as Eliot did. Frankly, many of us have far more wood than we need or can ever hope to use. (Just ask my wife! I have an expanding pile next to me as I sit here typing.) Wood really does grow on trees. It seems like every other day another tree comes down somewhere nearby. Members are encouraged to get into the habit of donating items frequently to share via the Auction table. We would particularly like to see a better representation at the May meeting. The Silent Auction is a fun and valuable part of our meetings. Some members have too much wood, and others have needs. That's what this is all about. The fact that the club also makes a small profit is nice but secondary and not the point. Please participate.

4) Program Chairman Eliot Feldman introduced Ed Karch, one of our CAW friends and now an MCW member, as our speaker for the evening. Ed loves to enhance his turnings with artwork and to experiment with pyrography, coloring, piercing, and various forms of decoration; his demonstration was certainly very interesting, enlightening, and hands-on.

New Members (Stuart Glickman)

<u>Member Name</u>	<u>Location</u>
Richard Ellery	Clarksville
Ed Karch	Fairfax, VA
Laquetta Karch	Fairfax, VA

***Welcome to our
newest members!***

Help out a fellow turner!

A few members or potential members cannot drive at night, or for another reason need a ride to our Thursday night meetings. If you don't find another member in our membership list near your community, let Don Couchman know of your need. He will help in locating a member to provide transportation.

Membership Application Form and Interest Profile (Stuart Glickman)

MCW Membership Application forms available at: <http://montgomerycountywoodturners.org/Membership.aspx>

To become a member, please print out, complete and either mail it or personally deliver it to Stuart Glickman along with a check payable to Montgomery County Woodturners. Please ensure you include your email address as notification of the monthly MCW Newsletter publication is made electronically. In addition, include your personal website if you would like it referenced on the MCW website as a way to showcase your work.

Express your interests and needs. We encourage everyone to complete a MCW Member Interest Profile which is included with the Membership Application form on the MCW website. This is of great benefit to the officers as we develop programs to meet everyone's needs. Please take the time to complete your profile and provide to Stuart Glickman at the next chapter meeting.

Member Discounts (Clif Poodry)

Rockville Woodworkers Club <http://www.woodworkersclub.com/>

Remember to support the Woodworkers Club by purchasing turning supplies during our meetings and save 10 percent on the retail price.

Woodturning Club Member - Login <http://www.woodturnerscatalog.com>

Club members: Save 10% on all finishes & disc abrasives! Just mention your club name and save, all year long. You can always see current club specials by clicking on the members login button on their homepage. New 15% specials are updated on the 1st of the month, which can be accessed by clicking on the hotlink above and going to the club member login located on the lower right portion of the page.

Mentor Program (Donald Couchman)

Become a Mentor!

Member News and Activities

Arthur Mensch attends week long turning class at Arrowmont



Arthur Mensch attended a week long course at Arrowmont School of Arts and Crafts in Gatlinburg, TN. The course was taught by Ray Key, and the emphasis was on esthetics and design. Art felt like he was somewhat in over his head at first as most of the others in the course were more experienced, and some were even professional woodturners. Arrowmont is a great place to take a course and they have a great woodturning shop. Art would highly recommend going there.

The course was titled *Aim High and Go Beyond* with Ray Key, March 24-31. He emphasized form and esthetics. He gave demonstrations and then, when students had work to show, he did comparisons between the different examples of similar forms. Most of the students were quite accomplished turners. The course information said the school would furnish all tools needed but suggested bringing your favorite tools. Almost everyone except Art brought their entire tool kit most of which were more advanced than the school equipment.

[Editor's comment: I also had the opportunity to take a course at Arrowmont three years ago under Bobby Clemons and John Roberts and found it fantastic. My classmates also included a wide range of expertise, but I found the instructors very accommodating to the mixture of experience levels. I would not be concerned with the variation in skill levels unless the course description was very specific about targeting advanced turners only. In fact, it is a great way to pick up techniques from your peer classmates. As Art found out, best to take your own set of tools and augment what you don't have with what the school has available. We are all more comfortable with our own tools anyway!]

Talk to Art or Bert if you would like a more detailed perspective on attending Arrowmont and why we selected it over other locations.

Phil Brown Interviewed by Voice of America regarding Woodturning in Simple Terms



Last month Phil was interviewed by Voice of America reporter, Dana Demange, about his wood turning for use in a special English broadcast that is limited to a vocabulary of 1,500 words. The program is now available at www.voaspecialenglish.com. The topic can be found by searching under the Arts & Entertainment section with a title of *Exploring the Richly Detailed History and Art of Woodworking*.

You can read the article by clicking on Phil's picture or the title, and clicking on one of the "listen" options. "While, of course, not my choice of words, Dana did a wonderful job of accurately describing what I do in the last part of the program." You should be able to go directly to the program with this address: <http://www.voanews.com/specialenglish/2007-04-10-voa1.cfm>

Clif Poodry Teaching Advanced Bowl Turning Class

Clif Poodry will teach *Advanced Bowl Turning* on April 28 and 29th at The Woodworkers Club, 4950 Wyaconda Road, Rockville, MD. Phone: 301-984-9033. For more information, see: www.woodworkersclub.com

Safety Tips of the Month (Gary Guenther)

Wear Gloves When Working with Finishes and Solvents

If you are like me, you will find yourself working with finishes and solvents with your bare hands -- usually with a piece of rag or paper towel. The stuff gets on your fingers, and you wash it off when you're done. No big deal. Well, maybe it is.

Those products not only pose an inhalant problem, but are very damaging to your skin. I mention this as a cautionary tale because one of our good friends, known to many, Don Riggs, is now having a very bad time with recurring and apparently incurable deep cracks in the skin on his hands. Nothing (and believe me, he has tried every skin product known to man, woman, farmer, and fisherman) has worked to alleviate this painful problem. Don believes the reason is that he often worked with various solvents with his bare hands.

So make a habit of having a good pair of appropriate gloves (rubber, latex or nitrile) handy, and make it a point to use them whenever you work with finishes and solvents. You know they always seem to get on your hands somehow, even if unintended.

Buy gloves extra large so they are comfortable and easy to put on and take off. Small gloves are a pain, and one of the reasons we don't like to use them. I buy the largest possible size, and they're still usually too small. As soon as you get a tear or leak, and you always will, replace the gloves or just use them for applying your favorite water-based wax emulsion. The latter is just a matter of cleanliness -- a couple of holes won't matter much if you hate to throw otherwise "good" gloves away (as I do)

And while you're at it, working with those stinky chemicals, consider wearing a mask designed to help with such things. They're available for a very reasonable price and reusable. We only get just so many brain cells, and frankly, I'd rather kill mine with ethyl alcohol that has had a proper duration of storage in oak barrels.

Safety First -- that means Think Ahead.

Submitted by Gary Guenther

Turner 10 Point Safety Tip Checklist

1. Use proper eye protection when turning.
2. Check your wood for splits, weakness, or cracking prior to mounting on the chuck.
3. Confirm that the wood is tightly gripped by the chuck before turning.
4. Use appropriate speeds based on the size of the object.
5. Do not wear gloves*, or loose clothing or hair, when turning.
6. Always turn with sharp tools.
7. Rotate the chuck manually at least one full turn to confirm proper clearance prior to starting your lathe, every time.
8. Do not wrap sandpaper or cloth around your hands or fingers while sanding or finishing.
9. Always check and re-tighten after any problem or catch.
10. Capture fine particles from the air with a dust collector.

*Turners who chose to wear gloves must understand the risks and tradeoffs.

Submitted by Gary Guenther



President's Perspective (Phil Brown)

At the April meeting, I was pleased to learn more about Ed Karch's inspirations and techniques for piercing through thin walls and his use of pyrography. I have admired his creativity and the evolution in his work over the past couple of years as seen at CAW meetings. While those of you not attending were probably not interested in the techniques, Ed did have a substantive handout that I hope we can make available on the Web site for future reference.

I expect our novice members are hungry to see chips fly during our meetings. Well, please stay with us because Eliot has some demonstrators lined up in the coming months who will be talking about and demonstrating their cutting techniques, among other things.

We have logo proposals from Bob Browning and Doug Pearson. While both proposals are good, I welcome more drawings. Since a print for one logo proposal was not available at the April meeting, I choose to wait until the May meeting to ask for your vote.

We want to make a concerted effort, particularly before our meetings begin, to photograph the show and tell objects you bring to the table. I will ask one or more of you to help in placing pieces for a photo and in recording the maker, size, and kind of wood. Help us in recording the works you bring in to share.

Recent issues of two woodworking and craft magazines caught my attention with their items related to woodturning, a topic they only occasionally or never cover. The June 2007 issue of *Fine Woodworking* reports on an evaluation of heavy-duty lathes, and they announced a compendium of prior articles titled *Woodturning Basics*. See www.FineWoodworking.com/Woodturning. And second, the May 2007 issue of the *Crafts Report* has a *Crafts Insight* section on wood (non-furniture and mostly turned) and a flowery article on *Unique Turnings--Turning Wood to Art*. Marketing experience of Allen Alexopoulos, President of Chesapeake Woodturners, is in the Insight section. While this May issue is not yet posted, look for it at: www.craftsreport.com/current_issue/

VisArts has interior construction under way in their new Rockville space. I hope to report on their progress next month.

From May 26 to July 6, The Creative Crafts Council will hold its 26th Biennial Exhibition in the mansion at Strathmore, 10701 Rockville Pike, North Bethesda. Most craft media will be featured with contemporary work (not folk/county crafts or antique reproductions), but there will not be much wood beyond a few turned pieces, probably mostly mine. Do plan to see this exhibit and take your spouse. The Council is a volunteer group of representatives of 10 guilds in the metropolitan area, including ceramics, polymer clay, enamel,

(Continued on page 7)



President's Perspective (continued)

(Continued from page 6)

glass, fiber, and gold or other metal jewelry. Who knows, maybe in a future year MCW will have a couple of members willing to work on the Council board and then wood will be much better represented by encouraging MCW members and other turners and wood workers to apply.

At the end of March, I joined my wife Barbara for a trip to Seattle where she gave a Powerpoint lecture on Brumidi's painting in the U.S. Capitol. While there, we saw the traveling exhibit, *Turning Wood into Art: The Jane and Arthur Mason Collection* and other exhibits at the Bellevue Art Museum, and had a long visit with Michael Monroe, the Museum Director, and former Curator-In-Charge at the Renwick Gallery in DC. Even though I saw the same pieces when the collection was given and first shown at the Mint Museum in Charlotte several years ago, and had seen many of the pieces in the Mason's home in prior years, it was a special treat to revisit the work, some of which I had forgotten or not appreciated so much in the past. In a community so accustomed to seeing art-glass, which has seen significant development in Washington State during the past 35 years, I was glad many people there saw all the imaginative work to be found in turned wood.

I hope you can come to our May meeting, and do bring a chair or stool to sit on.

Future Planned Meeting Programs (Eliot Feldman)

- June - Professional English Turner, Jimmy Clewes
(Note: there will be a \$10 participation fee per member for this demonstration.)
- July - TBD
- August - *Turning Pens* by Don Couchman
- November - Bill Grumbine (CAW demonstrator—possibility for MCW?)

Treasurer's Financial Report (Doug Pearson)

The MCW bank balance currently stands at \$1,061.

Group Buys (Arthur Mensch)

If you have any suggestions for types of items (sandpaper, superglue, log sealer, etc.) that you would be interested in that is not available through the Woodworker's Club, please let Art Mensch know.

Silent Auction (Doug Pearson)

For the month of April, we had two contributors of auction items which brought in \$16. I would encourage others to bring some of those extra logs or chunks of wood that you don't think you'll get around to using. On behalf of MCW, I thank you for participating in the silent auction.

Editor's Viewpoint (Bert Bleckwenn)

Thanks for the get well card and all the well wishes. Your thoughtfulness definitely brightened my day and still sits on my desk as a reminder of all of you.

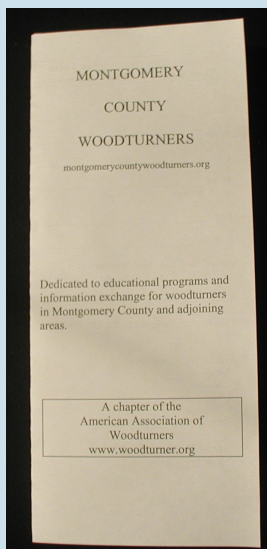
Special thanks to Gary Guenther for pitching in and filling some of the void in newsletter content since I couldn't make the last meeting. Gary has been great as a second pair of eyes in ensuring a high quality newsletter.

The 2007 AAW annual symposium is coming up. If you've never been to one, it is a real eye opener. To give you a perspective, I'll plan to bring in my photo albums from a couple previous symposiums and perhaps Cliff Poodry can lay out the symposium DVDs. If you can't make it this year, you need to definitely plan to make the 2008 symposium as it will be in Richmond, VA.

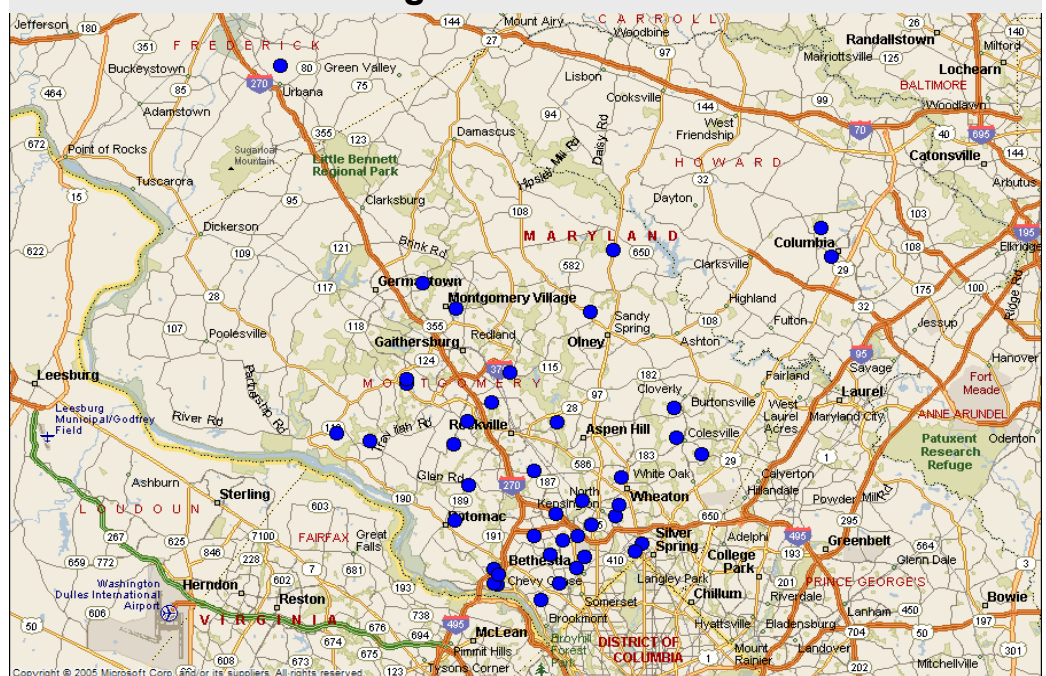
We continue to evolve and expand the newsletter content. The latest addition is Pat Taylor's new turner's perspective called *First Cut*. I think everyone will find this a great addition and opportunity for all to learn from Pat's ongoing journey. In addition, you might check out the various links that Pat has developed so far in his early stage of his woodturning journey:

<http://del.icio.us/pdt677/woodturning>. Check out his link to If You Give A Man A Lathe. It should bring a smile to many of you!

With an initial MCW brochure developed by Phil Brown and Gary Guenther, perhaps we should consider a chapter project to turn and construct a few brochure holders to be used to display at regional locations such as the Woodworker's Club, VisArts, Sansar and other craft locations. We would need to seek approval, but a nicely designed and executed brochure holder would be a great marketing tool in promoting the club. Perhaps a few members could collaborate on a design, review it with some of the officers and build them. Perhaps a discussion for our next meeting.



Where We Are Drawing Our Members From



Website Development (Doug Pearson)

There were a few additions to the website this past month. A safety tips page was added which was copied from the newsletter. This section will continue to grow as more safety tips come in, making all tips available in one place.

I hope you all got a chance to view the Voice of America interview featuring Phil Brown. The text and sound of the interview is available from the home page of the website.

I overheard someone talking about the website name (URL), thinking it was www.mcw.org. Unfortunately the full name must be filled out: montgomerycountywoodturners.org (the www is not necessary). This is because mcw.org is already taken by some other organization.

I've received a few comments from Mac users that they have experienced problems when entering the password for the Members Listing. So far, they all have been using Safari as their web browser. By switching to Firefox, the problem resolves itself. Firefox is a free download and a great browser.

Pat Taylor found an interesting article on turning green wood which I posted to the General Links page (click Links on the home page then select General Links). I turned a crotch section using the guidelines described in the article and am very pleased with the results.

Enter the MCW Chapter - Logo Selection Contest

Create a logo design for MCW!

Make several.

Just the sketch of an idea is sufficient.

Bring it to our May 10th meeting.

Members vote on the preferred design.

Your design could be MCW's future image!

Current Website Logo developed by Doug Pearson



Ed Karch Demo



April's Demonstration - Ed Karch (Gary Guenther)

Ed Karch sees woodturnings as a canvas for further artistic expression. He employs various techniques such as burning, pyrography, coloring, and piercing to enhance or radically altering turned pieces. He has a wonderful imagination and loves to experiment with a wide variety of shapes, images, patterns, and styles. These range from geometric, to zoologic, to Native American and beyond; they are often inspired by nature.

For the April MCW Demonstration, Ed brought a wide variety of his artistically-enhanced turnings, a table full of books on techniques and patterns, samples of image transfer methods, and some of the equipment he uses for pyrography and piercing. He exhibited his own work as well as lovely pieces by Molly Winton and Mac Ray. He passed around his turnings so we could see the techniques and results in detail, and a number of wooden test blocks demonstrating the results of the numerous methods for transferring patterns.



Ed described several forms of woodburning (pyrography) pens, some with dedicated tips and others that permit the user to design their own shape with nichrome wire. He discussed the use of Prisma markers as a color source, to be applied with a small paint brush. He showed a result of using "mud" as a resist (ala Clay Foster) and then burning with a torch.



Ed exhibited a vise/chuck combination for holding work pieces. He burned wood with several tips and permitted the viewers to do the same.

Perhaps the most interesting demonstration of the evening was piercing with an air-powered, 400,000 rpm rotary air tool (that recalled a dental office for many).



(Continued on page 11)

April's Demonstration - Ed Karch (Gary Guenther) - Continued

(Continued from page 10)



Attendees were offered the chance to experiment with the rotary air tool, and a number availed themselves of the opportunity.

Ed certainly expanded our ideas of wood turnings as art and showed us a number of ways to make turned wood a canvas for further expression and experimentation. It was a very enlightening evening, and playing with the tools was fun.



Exhibits

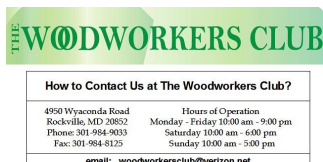
Jane and Arthur Mason Collection on display

Selected turned pieces from the Mason collection and by invited turners will be on display in wall cases at the Bethesda Public Library, May 1 through May 30, 2007. Included will be pieces by local turners, Phil Brown, Doug Pearson, David Fry, Joe Dickey (Davidsonville/Annapolis), Margaret Lospinuso (Laurel) and probably several other MCW members. The Library is at 7400 Arlington Road, and is open until 9 PM Monday - Thursday, and till 5 PM Friday - Sunday. I expect this is a good example of how MCW could take the initiative in the future to expose county residents to turned wood.

Creative Craft Council Exhibit

The 26th Biennial Exhibition of The Creative Crafts Council will be held from May 26 to July 6, 2007 in the mansion at Strathmore, 10701 Rockville Pike, North Bethesda. An opening reception, 7-9 PM, with award presentation at 7:30 PM will be held on May 25th. This multimedia contemporary craft exhibit will include several turned wood pieces by Phil Brown.

Recognition and Thanks



*... continued thanks to
Nick Suttora, owner of the
Rockville Woodworkers Club...*

Woodworkers Club





First turning



For my kids



For my wife



First mentored project



Progress...

First Cut (Pat Taylor)

Here I am, intimidated, walking into a room full of people that *actually know what they're doing*. Until now, they've been "the guy who wrote that turning book" or "that faceless pseudonym from the online forum" but here they are, in the flesh! Actual turners in *real life*. I'm waiting for the secret chant to begin in some language I've never heard, followed by the piercing stares that scream out *You must be new, are you sure you wandered into the right room, young man?*

That's what rushed through my mind as I stepped into the first MCW meeting. What would make someone feel that way at a friendly local turning club meeting? I'm a beginner. Period. I'd almost bet my life that you've spent more time turning than me. And for that first 5 minutes that defining factor felt like the crevasse that separated me from the rest of the room. Don't worry though; the feeling disappeared pretty quickly, probably even faster than 5 minutes.

My first thought about writing this column was "What the heck do I have to say that these people might be interested in?" Certainly I don't want to come off sounding as if I *think* that I know as much as the more experienced turners, because I don't. Am I the one that the other beginners should be turning to for advice? Probably not. Well, this beginner still has a lot to share, for a few reasons:

First, *I'm hungry for information*. Starving, even... I've discovered this new outlet for expression and ability to create with my hands, and I can't get enough. I read, experiment, and ask questions, all in an effort to learn new methods... the methods that someday I might call *my way* of approaching a problem.

Second, *I'm not set in my ways*. (I'm ducking any objects you might be throwing at me...) Being a beginner means that you haven't been rooted in certain habits or methods. *My way* doesn't really exist... at least not yet. There may be a few candidate methods I've found that I like for approaching certain situations, but with 4 months under my belt I can hardly call them *my way* of turning. This means that I'm open to trying new solutions, willing to experiment with new ideas, and I tend not to know enough to pass judgment on a given method before trying it for myself. This leaves me flexible and ready to find my own answers instead of being stuck on a method that may or may not be the best approach. (ducking again...)

So where does that leave us? Being a beginner affords me a unique perspective. With this column, I'd like to share my experiences as a beginner, in a way that is both helpful to the other new folks and perhaps entertaining or reminiscent for the more experienced among us. (You remember being clueless, right?) Each issue I'll touch on a certain subject or experience that's relevant to the beginner in all of us, and that illustrates the story of my turning experience so far.



A challenge

YMMV (Gary Guenther) *Tips Hints Ideas Clues*

YMMV is your forum to share pointers, shop tricks, jigs, tools, techniques, suggestions, scoops, instructions, buzz, and advice on woodturning-related topics with each other. This is your Newsletter -- participation is invited. Feedback from previous tips is welcome. Please send your entries directly to the ymmvmcw@att.net email address.

Entries may be as email with attached photos, or as an attached MS Word document. Photographs are strongly encouraged. Please send jpeg's compressed to no more than 120 KB in size. (If you need it, there is a photo resizer on the Web Site Classified Ad Submission page.)

Always use common sense. Things that work in one situation may not work in another. Follow all Safety Rules. If it feels wrong, it probably is; stop and rethink. ***Your Mileage May Vary!***

Tip - Power Drill Trigger Block

Turners often use a so-called "close quarters" electrical drill for power sanding. Many of these drills are variable speed, with the speed being controlled by the amount of lever depression. These drills often go too fast for prudent sanding, and it is hard to hold the speed constant at a fraction of the maximum trigger range.

I find it helpful to put a trigger block in place at a location appropriate for your desired speed for a given application. Many turners use a wooden block under the trigger. If this is glued in place, only one maximum speed is available. I have found a unique application for a rubber automobile exhaust hanger. I found one in my junk box (I think it was for my 1971 Sahara BMW 2002, rust spot in the usual place, long since gone to Bimmer Heaven) that fit the drill perfectly. It sticks tightly in one location for operation, but, even so, it can be moved back and forth to adjust the maximum desired speed for a given application. You can probably find one that will fit your drill for a couple bucks at your favorite automotive supply store or dealer.



Submitted by Gary Guenther

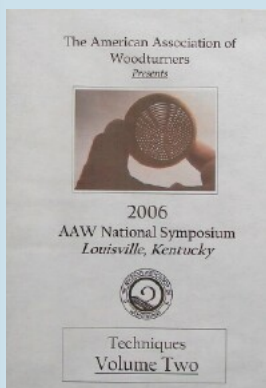
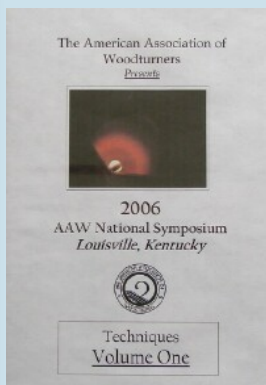
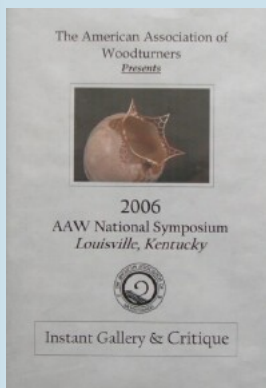
Arrowmont Fall Class Registration opens Mid-May

Registration for 2007 woodturning classes at Arrowmont School of Arts and Crafts will open in mid May at: www.arrowmont.org/registration/commerce.pl?page=fall2007-grid.html&cart_id=

While there could still be change to the schedule, these four classes are expected:

- *Multi-Axis Spindle Turning*, Mark Sfirri, Sept. 21-23, 2007 (weekend)
- *Turning on the Weekend!*, Jim Bliss, September 28-30, 2007 (weekend)
- *Explore the Possibilities with Bowls & Boxes*, Mark St. Leger, October 14-20, 2007 (week)
- *Green Wood Meets the Bowl Gouge*, Bobby Clemons, October 21-27, 2007 (week)

Check out AAW's Offerings



Lending Library (Clif Poodry)

WANTED: People to borrow books and videos. The lending library is getting heavy. Al Dickinson gave us three more books and Bob Browning gave us six more. Richard Webster gave us three VCR tapes and we received three new DVDs from the AAW headquarters. I am having a great time reading and watching, but carrying the box to and from the meetings is going to be challenging. If half of the library would leave in other people's hands each month, my back will sure appreciate it.

The contents of our library are listed below. For a modest \$2 charge you can check out an item for a month. The best time to arrange check out is before our scheduled demonstrator begins their presentation. If an item is lost or damaged, the borrower will be responsible for replacing it. I will keep an updated list of lendable items, and occasionally publish it in the newsletter, and post it on the web site. As our treasury allows, we hope to add fresh material. We encourage your suggestions regarding items to acquire .

Videos

1. DVD *Vessels of Illusion*, Trent Bosch
2. DVD *Decorative Utility Bowls*, Trent Bosch
3. DVD *Sculpting Wood; Beyond the Lathe*, Trent Bosch
4. DVD *AAW 2004 National Symposium Techniques Vol. 1*
5. DVD *AAW 2004 National Symposium Techniques Vol. 2*
6. DVD *AAW 2004 National Symposium Instant Gallery and Critique*
7. DVD *Two Ways to Make a Bowl*, Stuart Batty and Mike Mahoney
8. DVD *AAW Woodturning: Fundamentals of Sharpening*
9. CD *AAW American Woodturning 1986-1993 Volumes 1-8*
10. CD *AAW American Woodturning 1994-2001 Volumes 9-16*
11. DVD *Del Stubbs (Recovery of classic 1985 video tape)*
12. DVD *The Skew Chisel*, Alan Lacer
13. DVD *The International Turning Exchange 2006*
14. DVD *AAW 2003 National Symposium Techniques Vol. 1*
15. DVD *AAW 2005 National Symposium Techniques Vol. 1*
16. DVD *AAW 2005 National Symposium Techniques Vol. 2*
17. VCR *Dennis White teaches woodturning Turning Bowls*
18. VCR *Dennis White teaches woodturning Classic Profiles*
19. VCR *Woodturning: a foundation course*, Keith Rowley

Books

1. *Turning Bowls by Richard Raffan* 2002, Richard Raffan
2. *Hand or Simple Turning: Principles and Practice*, Holtzappfel
3. *The Principles and Practice of Ornamental or complex Turning*, Holtzappfel
4. *The Practical Woodturner*, F. Pain
5. *Woodturning in Pictures*, Bruce Boulter
6. *Woodturning Techniques*, W.J.Wooldridge

(Continued on page 15)

Lending Library (Clif Poodry)

(Continued from page 14)

7. *500 Wood Bowls*
8. *Rude Osolnik: A life turning wood*
9. *The Art of Turned-Wood Bowls*. Edward Jacobson
10. *Mark Lindquist, Revolutions in Wood*, Robert Hobbs
11. *Lathe-Turned Objects*, from The Wood Turning Center
12. *Re: Turning, Works by Stephen Hogbin*
13. *Put A Lid on It: Containing Human Experience*, AAW
14. *Turning 20 – Still Evolving*, AAW
15. *Step Up to the Plate*, AAW
16. *The Woodturners Companion*, Ron Roszkiewicz
17. *The Fine Art of small-scale Woodturning*, William R. Duce
18. *Turning Threaded Boxes*, John Swanson
19. *Adventures in Woodturning*, David Springett
20. *Small and Exciting Woodturning Projects*, James A. Jacobson
21. *Woodturning Traditional Folk Toys*, Alan and Gill Bridgewater
22. *The Fundamentals of Woodturning*, Mike Darlow
23. *Turning Wood with Richard Raffan*, Richard Raffan
24. *Woodturning: a foundation course*, Keith Rowley



Magazines

1. *American Woodturner 2002*
2. *American Woodturner 2003*
3. *American Woodturner 2004*
4. *American Woodturner 2005*
5. *American Woodturner Winter 2006 - Spring 2007*
6. *Woodturning Design Spring 2004 - Spring 2006*

Conferences

While the *2007 AAW Symposium* in Portland, OR is too far away for most of us, if you are interested, registration is \$275 up to May 15th and can be completed online at: <http://www.woodturner.org/sym/reg/default.asp?tE=1> After that it goes up by \$50.

If you long for a symposium a bit closer to home, check out the *Yankee Woodturning Symposium* in Middletown, CT, June 1-3, 2007. See: www.yankeewoodturningsymposium.org/index.html

Also see *Turning Southern Style XIII*, that will be held at the Unicoi State Park and Lodge near Helen, Georgia on September 14-16, 2007. See www.gawoodturner.org/symposium.shtml for details.

October 5, 6 and 7 are dates for the *2007 North Carolina Woodturning Symposium* in Greensboro, NC. Five national demonstrators and nine regional demonstrators are scheduled. There will be brochures at our May meeting, or go to www.northcarolinawoodturning.com.

Clif's Creations



Member Profile—Clif Poodry (Bert Bleckwenn)

Clif Poodry is a very accomplished turner! Just scanning a sampling of his portfolio shows the breadth and diversity of not only his skill, but also artistic eye and ability.

Clif has taken advantage of training opportunities by other turners such as a class with Trent Bosch.

Clif shares his skills and expertise by teaching *Introduction to Bowl Turning* and *Advanced Bowl Turning* classes at the Woodworkers Club.

Clif was the 2005 President of the Chesapeake Woodturners Chapter.

Clif is currently serving as MCW's Vice President and brings a wealth of club organizational experience and perspective to our chapter.

Professionally, Dr. Poodry is a biologist turned scientific administrator with research expertise in developmental genetics.

Examples of Clif's work can be found on his personal website at:

<http://homepage.mac.com/cpoodry/PhotoAlbum.html>



More Spirit Vessels



Interested in more Reading or Local Sources? (Bert Bleckwenn)

Interested in more reading? Here are hot links to other area AAW chapters, hotlinks to their newsletters, if available. Other related area woodworking sites and local sources of interest are also included.

Regional Websites of Interest

<u>Chesapeake Woodturners</u>	Newsletters: http://www.chesapeakewoodturners.com/library.htm
<u>Baltimore Area Woodturners</u>	Newsletters: http://www.baltimoreareaturners.org/resources.htm
<u>Capital Area Woodturners</u>	Newsletters: http://www.capwoodturners.org/cawart.htm
<u>Mid-Maryland Woodturner's Club</u>	(no downloadable newsletter)
<u>Annapolis Woodworkers' Guild</u>	(no downloadable newsletter)
<u>Howard County Woodworkers' Guild</u>	(no downloadable newsletter)
<u>Washington Woodworkers' Guild</u>	Registration required to receive newsletter: http://www.washingtonwoodworkersguild.org/faqs.htm
<u>Maryland Wood Worker</u>	(no downloadable newsletter)

Local Wood and Supplies Sources

Barrons Lumber (Gaithersburg)
Dunlap Woodcrafts (Chantilly, VA)
Exotic Lumber (Gaithersburg)
Vienna Hardwoods (Vienna, VA)
Woodcraft (Springfield and Leesburg)
Woodworkers Club (Rockville)
Woodworkers Club—a Woodcraft Store (Rockville)
WoodFinder, Your Source for Lumber, Veneer and Sawmill Services (use to search for additional local sources)

Other Websites of particular interest:

Wood Central - Messages, Daily Trivia, Turning, Hand Tools, Woodcarving, Events, Looking for Something?, Classifieds, Benefit Auctions - Woodcentral turning forum
Woodturning Online
Collectors of Wood Art (Newsletter available)
Wood Turning Center (Online Newsletter available)
Craft Report (Magazine available)
Sawmill Creek Turner's Forum
Woodturner's Resource Forums

Montgomery County Woodturners Newsletter

Newsletter Editor:
Bert Bleckwenn
Phone: 301-718-1850
email: bableck@gmail.com

Montgomery County Woodturners -
A local chapter of the American
Association of Woodturners (AAW)



Next Meeting

Date: Thursday, May 10, 2007
Time: 7:00-9:00 PM
Location: Woodworkers Club
4950 Wyaconda Road
Rockville, MD 20853
Phone: (301) 984-9033
Program: **Sanding Techniques**
by Clif Poodry

We're on the Web at:

www.montgomerycountywoodturners.org

MCW Contact Information

Officers

President	Phil Brown	philfbrown@comcast.net	301-767-9863
Vice President	Clif Poodry	cpoodry@aol.com	301-530-4501
Program Chair	Eliot Feldman	eliot@mathtechinc.com	301-493-9666
Secretary	Gary Guenther	gary.guenther@att.net	301-384-7594
Membership	Stuart Glickman	sglickman@compuserve.com	301-279-2355
Treasurer	Doug Pearson	dspearson@verizon.net	301-229-6395
Newsletter Editor	Bert Bleckwenn	bableck@gmail.com	301-718-1850

Volunteers

Mentor Program	Donald Couchman	bigcouch@aol.com	301-963-6770
Group Buys	Arthur Mensch	jamensch@aol.com	301-840-9378
Web Master	Doug Pearson	dspearson@verizon.net	301-229-6395
Lending Library	Clif Poodry	cpoodry@aol.com	301-530-4501
Photographer	Chris Colella	mike@colellaphoto.com	301-942-2853
YMMV Submissions	Gary Guenther	ymmv.mcw@att.net	301-384-7594