

Volume 2008, Issue 3

March 2008



Michael Blake



Tool handles



Michael Blake  
Custom tool handles

## Montgomery County Woodturners

<http://montgomerycountywoodturners.org>

Page 1

### March Meeting and Demonstration (Eliot Feldman)

The next meeting will be:

Date: Thursday, March 6, 2008  
Time: 7:00-9:00 PM  
Location: Woodworkers Club  
4950 Wyaconda Road  
Rockville, MD 20853  
(301) 984-9033

#### Agenda

- |                |   |
|----------------|---|
| 6:45 -7:00 PM  | Bring a chair, get a name tag, register your Show & Tell item with Mike Collela and Richard Webster, donate to the silent auction, bid on a silent auction item, check out the Lending Library videos and meet other members. |
| 7:00 - 7:15 PM | Business Meeting and Show & Tell  |
| 7:15 - 8:50 PM | Program: <b>Michael Blake - Making Tool Handles</b>   |
| 8:50 - 9:00 PM | Pay for and retrieve your silent auction items, pack up, put the lathe and space back in order.   |

#### Program

##### Michael Blake - Making Tool Handles

##### Profile

I'm a semi-retired junk mail writer and designer. I've worked with leather and wood since I was 10 or 11 years old. Actually, my mother gave me a photo of myself when I was about two, hammering some chicken wire to a 2x4 cage right in front of the apartment we lived in when my dad was in college. My main interest is making boxes, but making new handles for all my tools (not just turned versions) has become a fairly significant "interest", if not an obsession. I recently started making pencils and plan to start turning pens soon. I've taken one turning class about 4 years ago, Basic Spindle Turning at the Woodworker's Club to get me started. One of these days, I suppose I'll start making bowls, etc. When I decide to start on bowls, I intend to take Clif's class and feel very lucky to have someone as exceptional as him to learn from.

### Special points of interest:

- New MCW Logo
- Seneca Creek Joinery visit
- Discovery "Strathmore Day"

### Inside this issue:

Meeting & Demo	1
President's Perspective	2
Volunteers Needed	3
Financial Report	4
Conferences & Events	4
Membership Information	5
Editor's Viewpoint	6
Future Meetings	6
News about our Members	7
Feb. Meeting Minutes	8-9
Feb. Meeting Demonstration	10-11
Show & Tell	12-15
Seneca Creek Joinery Interview	16-19
AAW Open Letter	20
Discover "Strathmore Day"	21
Lending Library	21-23
Chapter Contacts	24

## President's Perspective (Phil Brown)

The new MCW logo you see across the pages of this newsletter is the product of many hours of computer work by Gary Guenther using the design developed by Bob Browning and selected by our members. My thanks to Gary for his tireless effort in crating a clear rendition of previous versions.



## Montgomery County Woodturners

I'm pleased that most members, even those not usually attending meetings, have renewed their membership for 2008. As I now write, and counting some new members with renewals, we have about 89% repeat membership for 2008.

Stuart Glickman, David Jacobowitz, and I were in a Senior Artists Alliance exhibit at the Columbia Arts Center in January. The director of the center liked our turned wood pieces, recalled the turned wood show there four years ago by Chesapeake Woodturners, and invited me to curate a turned wood exhibit there some time. I would like to do that based on work by members of five AAW chapters in this area. A project for 2009 or 2010.

If you would like to find a hotel roommate for the AAW Symposium in Richmond, give me your name and I will inform you of anyone else who does the same.

Enjoy your wood turning and continue bringing the great array of work to our Show & Tell displays each month.

Jan McHenry, Adult Services Librarian and Phil Brown, MCW President in front of the recent Davis Library display



## 2008 AAW Symposium Volunteers Needed (Phil Brown)

AAW is expecting 2000 members to register for the Richmond Symposium. Many volunteers are needed for activities prior to the Symposium and additional volunteers are needed during the three-day symposium. The teams highlighted in bold are in the most need of additional volunteers during the actual symposium event. If you can help, even for a couple of hours, please contact the respective team leader listed below for any area that would be of interest to you. This is a great opportunity to help support AAW and represent our chapter in supporting the symposium.

### 2008 AAW Symposium Committee Teams

Team	Leader	Phone	Email
<b>REGISTRATION</b>	Philip Duffy	757-870-7007	pfduffy@verizon.net
PACKET STUFFING	Lee Scarbrough	804-520-1745	franlee1@verizon.net
<b>AAW PRODUCT SALES</b>	Gene Milstead	804-932-9749	g_milstead@yahoo.com
MACHINERY	Sid Mace	804-453-4108	macepenny@yahoo.com
WOOD & MATERIALS	Aage Rendalen	804-261-9160	rendalen@comcast.net
DEMONSTRATOR ASSISTANTS	Jim Bumpas	804-526-2873	jimturnswood@yahoo.com
<b>INSTANT GALLERY</b>	Jim Marstall	540-872-4489	jim@marstall.com
PR AND PUBLICITY	Gail Olmstead	630-416-3030	Gail@cccmeetings.com
YOUTH COMMITTEE	David Sterling	804-256-5071	Pager – No e-mail
EXHIBITION	Jim Percell	540-373-8019	jpercell1@cox.net
CHAPTER CHALLENGE	Al Kiebert	757-469-0077	exoticwo@exoticwoodcreations.com
AUCTION COMMITTEE	Nick Cook	770-422-9873	75021-2064@compuserve.com
DOOR PRIZES /SILENT AUCTION	Carol Kuc	630-416-3030	ckuc@cccmeetings.com
RETURN TO COMMUNITY	Sherman McLaughlin	804-737-6110	drwood1211@aol.com
SPOUSES TOURS	Dan Luttrell	804-271-4799	DanLuttrell@verizon.net
SYMPOSIUM SIGN	Al Kiebert	757-469-0077	exoticwo@exoticwoodcreations.com
LEARN TO TURN	Chuck Engstrom	410-778-0877	c-engstrom@verizon.net
SPOUSE CRAFT ROOM	Penelope Mace	804-453-4108	macepenny@yahoo.com
LOGO (co-leaders)	Bruce Robbins	804-363-8258	brobbins629@verizon.net
	Herb Walke	804-794-4781	wherb@erols.com
<b>CLEANUP</b>	(Leader Needed)		

**Smithsonian  
Craft Show**

April 10-13, 2008

At the  
Building Museum



National Building Museum

**Treasurer's Financial Report** (Doug Pearson)

The MCW bank balance currently stands at \$2,255.54

**2007 Financial Statement:**

Dues Collected	\$1,670.00
Demo Fees Collected	790.00
Demo Fees Paid	(975.00)
Silent Auction/Lending Library	333.50
Club Expenses	(247.00)
Interest Paid	.04

Ending Balance 12/31/07                      \$1,571.54

**Conferences & Events** (Phil Brown)

The **Smithsonian Craft Show** will be open April 10 to 13, 2008 at the Building Museum, 401 F Street, NW in Washington, DC. You can take the Red Line to the Judiciary Square Metro Station, find limited street parking, or park in nearby parking garages at the Verizon Center's 6th Street entrance or at the corner of 7th and H Streets. More details are available on their website at:

[www.smithsoniancraftshow.org/indexmain.asp](http://www.smithsoniancraftshow.org/indexmain.asp)



**ARROWMONT CLASSES** The Arrowmont catalog is out with 8 woodturning classes of one and two week duration scheduled in June, July, and August. See their schedule on their website at: <http://www.arrowmont.org/>

**Hartville Tool Club Discount** (Art Mensch)

I am happy to announce that Montgomery County Woodturners is now officially signed up for participation in Hartville Tool's Club discount program,

The first year we get a 20% discount on regularly priced items and a 15% discount in subsequent years along with our chapter receiving a 3% rebate.

If you haven't signed up for this program, new participants should let me know first that they wish to join the program. Then, I will let Hartville know they are members of MCW and sign them up.

I will have catalogs and ordering instructions available at our meetings.



**New Members** (Stuart Glickman)

<u>Member Name</u>	<u>Location</u>
Martin Cherry	Bethesda
Russ Iler	Bethesda
Paul Mahany	Bethesda
Lester Scheuermann	Mt Ranier

***Welcome to our  
newest members!***

**Help out a fellow turner!**

A few members or potential members cannot drive at night, or for another reason need a ride to our Thursday night meetings. If you don't find another member in our membership list near your community, let Don Couchman know of your need. He will help in locating a member to provide transportation.

**Membership Application Form and Interest Profile** (Stuart Glickman)

MCW Membership Application forms available at: <http://montgomerycountywoodturners.org/Membership.aspx>

To become a member, please print out, complete and either mail it or personally deliver it to Stuart Glickman along with a check for \$20.00 payable to Montgomery County Woodturners. A Family membership is \$30.00. Please ensure you include your email address, as notification of the monthly MCW Newsletter publication is made electronically. In addition, include your personal website if you would like it referenced on the MCW website as a way to showcase your work.

Express your interests and needs. We encourage everyone to complete a MCW Member Interest Profile which is included with the Membership Application form on the MCW website. This is of great benefit to the officers as we develop programs to meet everyone's needs. Please take the time to complete your profile and provide it to Stuart Glickman at the next chapter meeting.

**Member Discounts** (Clif Poodry)

**Rockville Woodworkers Club** <http://www.woodworkersclub.com/>

MCW and other club members, remember to support the Woodworkers Club by purchasing turning supplies during our meetings and save 10 percent on the retail price.

**Woodturning Club Member - Login** <http://www.woodturnerscatalog.com>

Club members: Save 10% on all finishes & disc abrasives with Craft Supplies USA! Just mention your club name and save, all year long. You can always see current club specials by clicking on the members login button on their homepage. New 15% specials are updated on the 1st of the month, which can be accessed by clicking on the hotlink above and going to the club member login located on the lower right portion of the page.

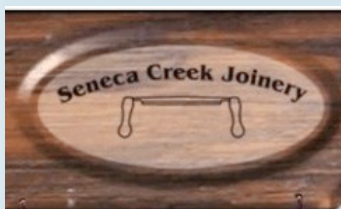
**Mentor Program** (Donald Couchman)

For personal help from a more experienced MCW member, contact Don Coachman at 301-963-6770 to identify a potential mentor.

# Use a Mentor!



What's the origin of this Lathe?



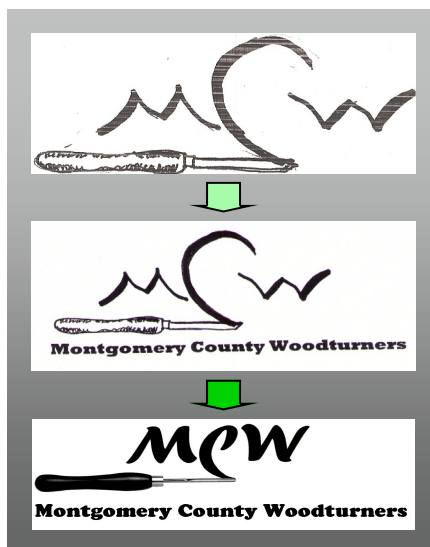
## Editor's Viewpoint (Bert Bleckwenn)

Hats off to Bob Browning and Gary Guenther for the time and effort in developing our MCW Logo. You can see the evolution that the design took from Bob's original concept to Gary's final rendition over the last several months.

Nobody has guessed the origin for last month's lathe picture depicted on the left. Here's a hint: It's from a classic movie. Give me a guess at the next meeting.

I couldn't help but call out a recent close-out purchase of the *Handbook of Turning* from 1846 for \$3.95 from Lee Valley depicted on the next page. It is a curious read.

I find it interesting timing that the last two issues of AAW's *American Woodturner* have had environmental responsibilities articles by Brad Whitman that speaks to what role we, as woodturners, should consider in our sourcing and selection of wood. With that in mind, I encourage you to read my interview later in the newsletter with Chris Holmgren of Seneca Creek Joinery regarding his efforts in being environmentally responsible. I look forward to member feedback about what Chris is planning to do in harvesting wood destined for a landfill and how we, as individuals, and as a chapter might mutually benefit by supporting and patronizing Chris's endeavors.



## Future Planned Meeting Programs (Eliot Feldman)

If you have suggestions for future meeting demonstrators or would consider demonstrating something yourself, please contact our program director, Eliot Feldman at [eliot@mathtechinc.com](mailto:eliot@mathtechinc.com) or by phone at 301-493-9666.

## Future Planned Meetings:

- April 10 Eliot Feldman - Lidded Box
- Sept 11 Jamie Donaldson

2008 Meeting Schedule		
January 10	February 7	March 6
April 10	May 8	June 12
July 10	August 7	September 11
October 9	November 6	December 11

## News about our Members (Phil Brown)

The Jewish Community Center's annual senior art show, "A Lifetime of Perspective: Art by Older Adults", is scheduled for May 18 through May 30, 2008. This is a well-attended show and open to anyone who is 65 or older.

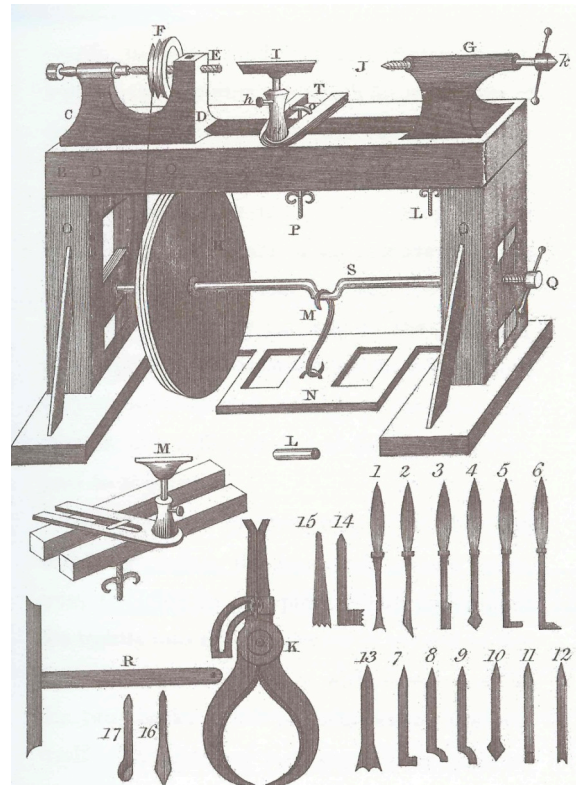
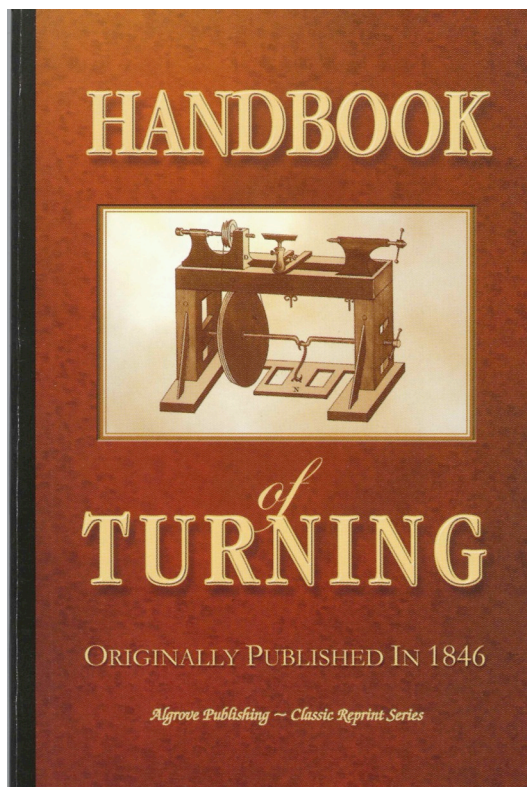
The show is for non-professional artists age 65 or older. You may submit up to three items. Space permitting, at least one will be shown. Works are to be framed or otherwise prepared for display for the show but need not be for the selection process. Media accepted include recent paintings, prints, photography, sculpture, jewelry, craft and fiber art. No charge to participate. No commission to the JCC for items sold.

If interested, contact Kandy Hutman, Senior Adult Program Director at 301-348-3864 or her assistant, Ellen Carroll at 301-320-7702 to schedule a showing of your work for selection. Delivery to the JCC is Thursday, May 1, 10 am to 3 pm. Pickup is Monday, June 2, 10 am to 3 pm.

Clif Poodry will teach *Introduction to Bowl Turning* on March 29th at The Woodworkers Club in Rockville, MD. Check it out at: [www.woodworkersclub.com/practice%20class1.htm](http://www.woodworkersclub.com/practice%20class1.htm)

Editor's Note: In the new, Spring issue of *American Woodturner*, on page 13, Phil Brown is thanked for "significant contributions" related to directory maps.

Also in the new, Spring issue of *American Woodturner*, on page 10, Montgomery County Woodturners is listed as one of a record 25 new chapters chartered by AAW in 2007.



**Turning in 1846**



## February Meeting Minutes (Gary Guenther)

Thirty-two people attended the February meeting – what an outstanding turnout! Video Library, Silent Auction, and Show & Tell tables were set up while everyone enjoyed socializing.

Clif Poodry brought in a huge addition of new videos to our Library thanks to a generous donation by Elliot Schantz. Because we are not sure of the quality and content of each of these tapes, we are renting them for a buck a pop. Please check some out and help us evaluate them – give Clif your reviews on a piece of paper so we'll know how to rate and categorize each one for future use.

Phil Brown welcomed everyone, including new members and guests, and made the following announcements.

- Thanks to Art Mensch, we are registered with Hartville tool. If you signed up last year, you are now eligible for discounts on purchases. New participants should let Art know that you wish to join the program.
- Eliot Feldman and David Fry signed up to demonstrate wood turning at the Strathmore Mansion Open House on Sunday Feb. 17 (photos include elsewhere in the Newsletter).
- Pieces exhibited at the Davis Public Library were returned to participants.
- Register soon for the AAW symposium in Richmond. This is something everyone should do at least once. If you are going without a spouse, sharing a hotel room is a way to reduce your cost. If you are looking for someone to share a room, let Phil know. The 54 demonstrators and their 162 topics are listed alphabetically on pages 17-20 of the Spring issue of *American Woodturner* and also at:  
[www.woodturner.org/sym/sym2008/demo\\_1.pdf](http://www.woodturner.org/sym/sym2008/demo_1.pdf).

Stuart Glickman collected membership dues. We currently have 59 members signed up for 2008. We welcome any guests to join MCW for a yearly fee of \$20 (\$30/family).

A nice selection of White Rhyno sanding discs, Oneway gouges, and Trent Bosch hollowing tools, handles, and videos was displayed and available for purchase thanks to RJ of [www.2sand.com](http://www.2sand.com). We expect that this will continue at future meetings.

Show & Tell pieces were recorded with the help of Richard Webster and photographed by Stuart Glickman. Mike Blake led the very animated Show & Tell period. As usual, many interesting pieces were presented and discussed. [You can view them again below or by clicking the "February 2008" link on the Photo Gallery page of our web site.] There were far too many wonderful items for me to have any favorites, but the most unusual were a pair of multimedia works by Ed Karch, combining wood and glass. I found these very intriguing. Please bring your work, completed or in-progress, to the March meeting.

(Continued on page 9)



**RJ's For Sale Offerings**



## February Meeting Minutes (Gary Guenther)

*(Continued from page 8)*

The Silent Auction included pieces of apple, holly, and weeping cherry, as well as the cherry blanks cored in the demonstration by Clif. Some lucky members took these beautiful items home for a real bargain, and your Club treasury benefited \$57. Thanks to all our donors, with special thanks to Clif, and to Phil Brown who always brings something. We appreciate your continuing participation in this vital Club activity. Please support this ongoing event by bringing in some blanks and hunks of wood to share with your friends.



Eliot Feldman introduced our Demonstrator for the evening, Clif Poodry. Clif set up the McNaughton Coring System on the Oneway lathe and showed us how easy it is to use by coring a large cherry throughout several times. Ilya Zavorin and Gary Guenther also enjoyed getting the feel of it. It wasn't at all scary and worked very much as advertised.

We would like to remind everyone that our excellent Web Site is located at <http://montgomerycountywoodturners.org>. As always, if you have suggestions for changing or adding something in the Club, please discuss your ideas with one of the Officers.



Photo by Stuart Glickman

## February Meeting Demonstration - Coring System by Clif Poodry (Gary Guenther)

MCW Vice President Clif Poodry and his turnings have been profiled in these pages before – the June 2007 Newsletter shows his May demonstration of his “spirit bottle” hollow forms, and his work is often shown in our Show & Tell pages. While a dedicated Ph.D. biologist and NIH administrator by day, Clif finds time to turn beautiful pieces that he sells in galleries and at craft shows.

For this demonstration, Clif brought in his Kel McNaughton coring system and a large cherry round. I don’t know about you, but I’ve always been a little bit afraid of this thing. After Clif’s demo, it is just the opposite – I feel like it’s a very manageable tool, and it’s just a matter of whether one can justify the cost based on one’s needs and desires. From one point of view, wood grows on trees, and a lot gets wasted throughout the process. On the other hand, removing several bowls from the center of a blank reduces the turning time on each piece, as most of the wood normally turned into shavings is saved as a rough bowl blank. If you want to save time or make bowls and other items from special or expensive woods, then this may be the tool for you.

The McNaughton system comes in several different sizes as can be seen, for example, at

[www.woodturnerscatalog.com/store/Turning\\_Tools Bowl Coring?Args=](http://www.woodturnerscatalog.com/store/Turning_Tools_Bowl_Coring?Args=)

The “Standard” set comes with the tool support and gate, three curved blades with different shapes, a straight blade, and a handle. This is designed for use on 12 to 16 inch capacity lathes and allows bowls up to 12” in diameter to be cut from a single blank. A separate “Large” set is designed for use on heavy 16 to 20 inch capacity lathes, and allows removal of bowls up to 16” in diameter. There is a separate “Mini” set of blades for bowls under 10”. There is also a unique version for a 12” (only) lathe that comes with a redesigned tool support system and single 9” knife -- these are not compatible with the other sets. The bad news is that the costs of these things are very substantial and can add up quite quickly.

The main difference between the McNaughton corer and a somewhat similar system from Oneway is that the latter is constrained to produce only a single, hemispherical bowl shape. With the McNaughton system, the shape of the bowl is determined by the shape of the selected knife blade, the initial location and angle of attack, and adjustments made along the way. Both shallow and deep bowls can be turned out. To maximize the size blank that one can initially deal with, the cut can be planned so that the cutter does not have to completely remove the core (if working side-grain only). A dead-blow hammer can be used to break the core off a bit of a tenon – as long as it is not too wide.

Clif demonstrated with the Standard set. He also has the Mini set of blades but feels they are not worth having. After seeing the demo, I would have to agree. The most important thing at purchase is to make sure you buy the tool support with the correct length and diameter of tool post for your lathe. In use, the tool post fits into the lathe banjo, while the knife blade is constrained

*(Continued on page 11)*





## February Meeting Demonstration - Coring System by Clif Poodry (Gary Guenther)

(Continued from page 10)

between several metal knobs and under a gate. It is vital that the height of the tip of the cutter be exactly on center when the shaft is properly engaged under the gate -- if not, things can get difficult and dangerous. The length of the tool post at purchase must be appropriate to permit this.

While the cutters can be used in the handle provided, and many people may prefer that, Clif finds this handle to be heavy, and, considering the need to keep the tip of the cutter on center, he prefers working with just a small piece of hard plastic tubing over the tang as an ad hoc handle.

The blades are thicker at the cutting point than at the body, allowing some clearance on deep bowls. In practice, two cuts are necessary to provide enough space to clear the shavings. With a sharp cutter, on center, one can core with two fingers -- as Bill Grumbine likes to demonstrate. (See Bill's excellent comments and photos at [www.enter.net/~ultradad/bowlcoring.html](http://www.enter.net/~ultradad/bowlcoring.html) and at [www.enter.net/~ultradad/roughbowl.html](http://www.enter.net/~ultradad/roughbowl.html)) Lathe speed is not overly important and should be adjusted for the size of the blank and the comfort of the turner. The horsepower of the lathe is not a concern as long as you don't try to go too quickly. It may occasionally be necessary to back out the cutter to clear chips so they don't bind up.

The tool worked flawlessly with never a hint of a problem in the hands of Clif and also with Ilya and Gary taking turns. The cherry blank became three bowls instead of one. This is a very effective and easy-to-use tool.

Larger versions of the demo photos can be viewed online by clicking the "February Meeting Pictures" link on the MCW Web Site Gallery page.





## Show & Tell Camaraderie (Gary Guenther)



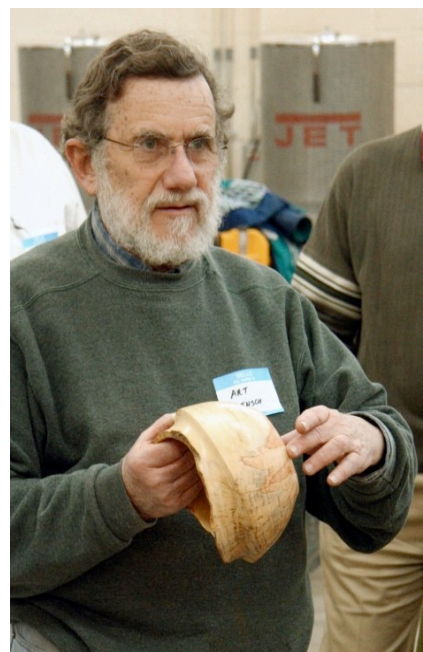
### Show & Tell Table



Clif Poodry  
Platters



Joe McArdle  
Southern magnolia bowls



Art Mensch



David Jacobowitz  
Burl vessel



Bill Casson



Ed Karch  
Maple and fused glass



## Show & Tell Camaraderie (Gary Guenther)



Stan Sherman  
Segmented vase



Bert Bleckwenn  
Walnut wine set



Ed Karch  
Maple and fused glass



Mike Blake  
Pens



Richard Webster  
Natural edge bowl



Don Couchman  
Cherry bowl

**Show & Tell** (Stuart Glickman)



Mike Blake  
Pens of various exotic woods



Eliot Feldman  
Maple kitchen ladle, 3x11



Eliot Feldman  
Hollow vessel of holly, 3½x3



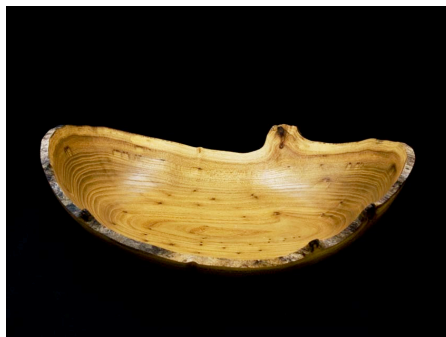
Joe McArdle  
Southern magnolia, 4x9



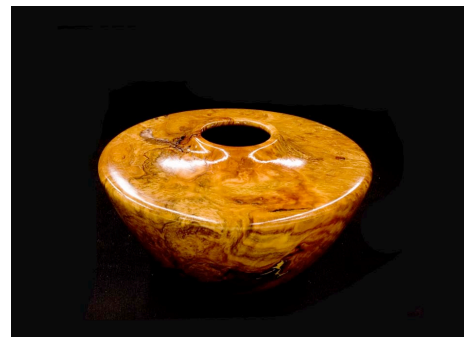
Joe McArdle  
Southern magnolia, 4x13



Don Couchman  
Cherry bowl, 5½x10



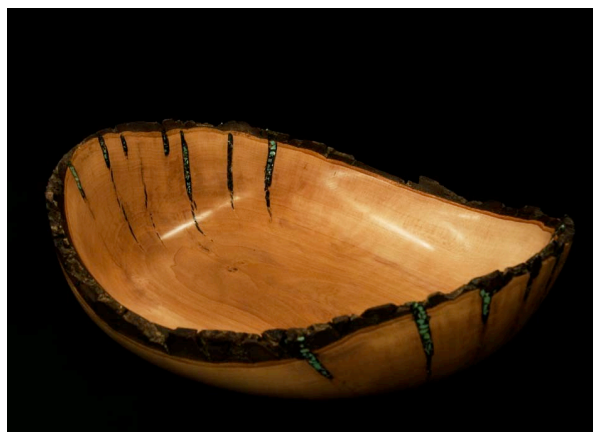
Bill Casson  
Chestnut natural edge



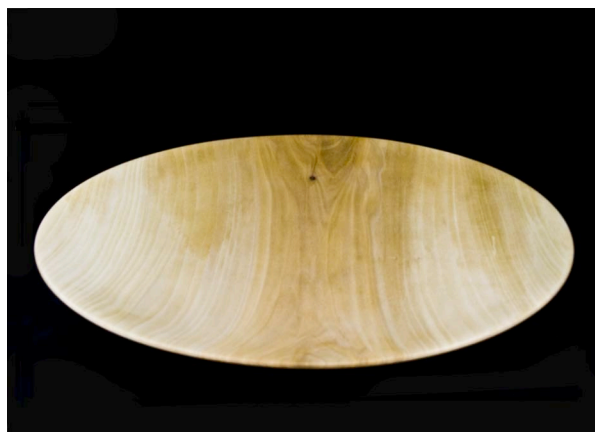
David Jacobowitz  
Coolibah burl vessel, 4x6½



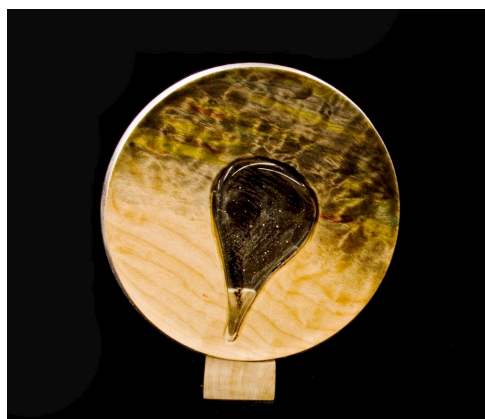
**Show & Tell** (Stuart Glickman)



Richard Webster  
Natural edge bowl of pear, 10x3



Clif Poodry  
Sycamore platter, 17"



Ed Karch  
Turned maple vessel with fused  
glass, 10"



Bert Bleckwenn  
Walnut wine set, 5x3



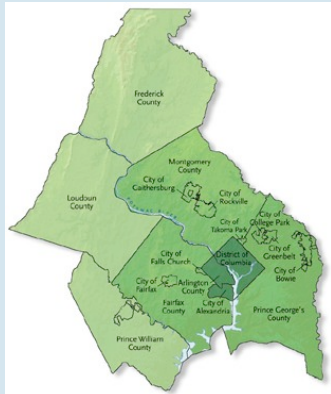
Art Mensch  
Weeping cherry and elm, 5½x5



Stan Sherman  
Segmented bowl, 12x3



Chris Holmgren  
**...from stump to  
finished furniture**



**Metropolitan Washington  
Council of Governments  
(COG)**



**Putting Waste Wood  
to Good Use**

## Seneca Creek Joinery Visit (Bert Bleckwenn)

As a follow up to David Fry's note, I had the opportunity recently to visit Seneca Creek Joinery, interview Chris Holmgren and discover what may be a variety of opportunities for MCW and Chris to mutually benefit.



**Windsor Chairs and 18th Century Furniture**

Chris Holmgren, proprietor of Seneca Creek Joinery, and his wife Patricia are Maryland natives who operate the business from, and live on, a 147 acre family farm in Dickerson, MD. They currently are the only employees of the business, but they have visions of expansion in the near term, hoping to add 2-3 employees as they grow the business organically.

As with many of us, an interest in woodworking was sparked in Chris when he was exposed to it during high school. He got his first working exposure while employed by a cabinet company and quickly moved on and expanded his experience base by working as a commercial and residential carpenter.

In his early 30's, while searching to find his real self and a sense of direction, Chris happened to attend one of Michael Dunbar's early Windsor chair-making classes. By the end of the class, Chris had declared to himself that "this is it" and has been on a path of building his expertise in Windsor Chairs and 18th Century Reproductions. His journey of self-development includes hands-on classes with John Alexander of "Making a Chair from a Tree" fame and Drew Langsner at the Country Workshops.

Along the way he has also become an advocate for our urban forests and strong promoter of reclaiming hardwoods from our urban landscape. In his search for sources of raw materials, besides his using and managing their own 40 acre farm woodlands, Chris became recognized and connected with others in the region concerned for our urban forest and the apparent senseless waste of regional trees.

In 2006, Chris and his long-time friend and partner, Troyt York, attended a waste-wood symposium which sparked their mutual interest and efforts in pursuing the urban waste-wood issue. Subsequently, Chris was asked to present his vertically-integrated approach of utilizing locally-available resources at a Washington Council of Governments (COG) Waste Wood Utilization Workshop along with Troyt York who headed the American Institute of Urban and Regional Affairs. This was a watershed event for Chris and Troyt and resulted in their partnering in the formation of the Community Woodlands Alliance

(Continued on page 17)



## Seneca Creek Joinery Visit (Bert Bleckwenn)

(Continued from page 16)

(CWA) which is a National Capital Region Demonstration Program that was funded by a \$100,000 startup federal grant. As noted on the CWA website, the whole basis for this initiative is grounded in the reality that of the over 200 million cubic yards of urban tree and landscape residue generated each year in the US, 15% is classified as un-chipped logs. If these logs were sawn into boards, they would theoretically produce 3.8 billion board feet of lumber which is approximately 30% of the hardwood lumber produced annually in the US. In Chris's words, "there is no such thing as waste wood".



So what started out as a woodworking endeavor has expanded into a lot of related avenues for Chris, all tied to wood.

As a vertically-integrated enterprise, Seneca Creek Joinery takes logs processed by CWA from the stump and turns it into finished furniture, cabinetry and millwork. Seneca Creek also offers custom sawmilling and drying of lumber. Chris started by taking the un-chipped logs from the City of Rock-

ville and has gradually expanded from there to what he calls his "cartel" of numerous regional municipalities and tree service companies regularly dumping off their logs at the Seneca Creek Joinery site. Once the logs are dumped into the area that Chris calls his "Candy Store", he proceeds with processing the logs through his saw mills, firewood cutters/splitters and other assorted logging and wood working equipment. Looking around, one not only sees large stacks of logs, but also stickered stacks of wood in various stages of open air drying or in one of the on-site kilns or possibly piles of firewood or kindling bundles waiting to be delivered. One of this past winter's hot success has been bundled kindling wood displays located at a variety of local businesses.



Retail  
firewood display



While not paying for the logs delivered by the various municipalities yet, Chris hopes to start covering their transport costs by the end of 2008 and to grow to 2-3 employees as part of his growth plan. His vision includes producing a variety of other value-add products such as rail ties, pallets and charcoal.

(Continued on page 18)

## Seneca Creek Joinery Visit (Bert Bleckwenn)

*(Continued from page 17)*



Chris's Shop Toolbox



Chris heats his shop with his own firewood



Small Brown Table

As you look around Chris's shop, and at examples of his work on his website, you can see that Chris makes good use of the locally available resources and has become a very accomplished craftsman along the way. His range of creations vary across a wide range: Windsor chairs and stools, treenware, great wheel lathes, workbenches and an assortment of items that a person from the 18th century would easily recognize. He currently has a commission from Mt. Vernon to provide reproductions of wooden shovels and scoops. While enjoying 18th century techniques, Chris is at home with modern wood-working equipment and definitely small woodlot logging equipment.

In addition to operating his business, Chris is on the board of the Maryland Forestry Association, a member of the Old Timers Group at the Montgomery County Agricultural Fair and frequently in demand as a speaker and demonstrator. He is co-chair of a planned 2009 wood symposium being planned now. At the fair, you will find him demonstrating and turning on his own self-built, great-wheel lathe while a hoard of kids are waiting their turn to pay a dollar for a chance to take a turn at cranking the great wheel. When all else fails, he will enlist one of his Old Timers Group friends to link up one of their antique "one-lunger" gasoline engines to provide power. He is also a sponsor of the Worldwide Opportunities on Organic Farms (WWOOF) which is part of a world-wide effort to link volunteers with organic farmers, promote an educational exchange, and build a global community conscious of ecological farming practices. He and Patricia have hosted two young adults interested in exploring opportunities relating to woodworking.



**Inside Seneca Creek Joinery**  
(notice the great-wheel lathe!)

So, how can MCW and Seneca Creek Joinery support each other? Obviously, using them as a source of local hardwoods would be a start, but in the course of my conversation with Chris, many other ideas were exchanged. Below is a starter list of possible opportunities which I will discuss with other MCW Officers as well as continuing my conversations with Chris Holmgren.

*(Continued on page 19)*



## Seneca Creek Joinery Visit (Bert Bleckwenn)

(Continued from page 18)

Possible opportunities for win-win partnering between MCW and Seneca Creek Joinery:

- Wood Source
  - Individual hardwood lumber and turning blank purchases
  - Silent Auction wood contribution (50/50 split between MCW and Seneca Creek Joinery?)
- Chapter demonstrations at the Woodworkers Club or at the Seneca Creek Joinery site
  - Spindle turning for Windsor chairs and stools
  - Vessels and treenware turning
  - Great-wheel Lathe demonstration
- Chapter presentations at the Woodworkers Club or at the Seneca Creek Joinery site
  - Presentation of the Community Woodlands Alliance (CWA) concept and tour of the vertical integration of Seneca Creek Joinery
- Classes, workshops or skill enhancement sessions at the Seneca Creek Joinery site
  - Dendrology presentation, workshop or class (wood identification)
  - Skill enhancement – bring 2-3 mini-lathes on site
  - Turning blank selection and preparation techniques
  - Log to bowl issues and challenges
- Mutual participate in demonstrations at regional venues
  - Montgomery County Agricultural Fair (August 2008)
  - CWA sponsored Wood Symposium to be held at Montgomery Co. Fairgrounds (March 2009)
- Mutual support of recycling and green promotion

So, give Chris a call or arrange a visit if you have an immediate need for turning and/or lumber materials. If you're interested in volunteering to turn along side the Old Timers on Chris's great-wheel lathe, let me know or give Chris a call.

### Contact & Web Site Information:

#### Seneca Creek Joinery

Chris Holmgren, Proprietor

19701 Peach Tree Road

Dickerson, MD 20842

(301) 972-7453

(800) 972-7453

F (301) 407-0369

Web site: [www.woodsurgeon.com](http://www.woodsurgeon.com)

email: [woodsurgeon@starpower.net](mailto:woodsurgeon@starpower.net)

**Community Woodlands Alliance (CWA) web site:**

<http://www.aiura.org/cwa/>



Windsor Chair creations by Chris Holmgren

## **AAW Board Member Open Letter** (Phil Brown)

Malcolm Tibbetts' February message.

As you might know by now, each month a different AAW board member is invited to address the membership in this setting. February is my turn.

The board has just held its winter meeting at this year's up-coming symposium site – Richmond, VA. After last fall's election, membership on the board has changed as Tom Wirsing takes a seat and Corey Anderson has been appointed to complete Sean Troy's term after Sean resigned for personal reasons. I wish Sean the very best and thank him for his service and I welcome Tom and Corey on board. Past board members Bill Haskell and I were re-elected; it continues to be an honor to serve.

There are some exciting things happening in the AAW. Of course the up-coming symposium is at the top of the list. I won't take space here to describe all the highlights of the symposium, but with over 91 different demonstration topics, I think it's fair to say that there will be something for everyone. After touring the Richmond Convention Center facilities, I was impressed by the demonstration space, the trade show and instant gallery space, and even the food service offerings. It's going to be an unbelievable experience for woodturners. I whole-heartedly encourage everyone to consider attending.

Our annual symposium has grown so much in recent years that not many facilities can accommodate us. One small restriction this year is the capacity of the banquet hall for our Saturday night dinner and auction. Tickets for this dinner are limited, so make sure you secure your tickets early; otherwise, you may be disappointed.

Another exciting AAW project – we have started work on a 25th Anniversary book that we hope to have available in 2011 at the St. Paul symposium. It seems as if we just celebrated our 20th anniversary and here we are preparing for the 25th. There will be much more on this book project in the near future. In the meantime, if you have any interesting stories related to the history of the AAW, then start thinking about sharing them.

As chair of the EOG (Education Opportunity Grants) committee, I am happy to report that almost 150 applications have been received for consideration. The committee members are busy evaluating the requests and we hope to award more than \$80,000 this year in individual scholarships, chapter assistance, and to school woodturning programs.

Have you visited your AAW website lately? Our webmaster, Ed Davidson has really done a wonderful job; the site is easy to navigate and is full of valuable information. With the hard work of board member Jean LeGwin and with Ed's expertise, soon members will have access to hundreds of past journal articles.

Bottom line: as we go into our 22nd year, the AAW continues to grow and continues to advance woodturning by providing more and more services to its members. The next time that you attend a club meeting, do your non-AAW friends a favor – convince them to join. I'm pretty sure that they will thank you.





## MCW Members Turn at 'Discover Strathmore' Day (Gary Guenther)

On Sunday, February 17, "Discover Strathmore" Day brought huge crowds to Strathmore. A variety of performances and workshops were held for music, dance, and theater, many young faces were painted, and a variety of crafts were demonstrated, including painting, metal sculpture, ceramics, and woodturning. For five hours, our own Eliot Feldman and David Fry brought the joys of boxes, small bowls, and spinning tops to intrigued and delighted onlookers of all ages on the Mansion's lovely, glass-enclosed porch. Visitors were also interested in looking at and touching a wide variety of previously-made turned items, from goblets to hollow forms, brought for display. It is safe to say that this demonstration was a great success, and, who knows, perhaps a budding woodturner has been put on the path.



## Lending Library (Clif Poodry)

Coming down with a winter cold or the flu is a major bummer. Staying home sick with a high fever, what is one to do besides drink lots of fluids and watch hours and hours of woodturning videos. Fortunately for me, I have the club library. Shortly after the new year, Elliot Schantz brought the club 100 surplus videos from the Gold Coast Woodturners. Among these videos are professionally made turning videos and numerous "home movies" of club demos by some of the more famous turners in the country. The latter, at over 4 hours in length, will satiate even your strongest thirst for turning. The tapes add to our collection of AAW symposium videos, which can be very useful for ideas and inspiration. The quality of the tapes varies. In most of them, the color is off slightly (or a lot) and the sound is low on a few. In the long run, we should probably purchase new DVDs of presentations that are particularly useful. When returning a tape, it would be most useful to have your review and recommendation whether it is one that we should replace with a new DVD (or not).

I have initially selected and organized the first 42 of the tapes into the professionally-made tapes and AAW symposium tapes. I am saving the large number of demo tapes for another day (or for someone with more time on their hands you can rent them for \$1 and provide a critique).

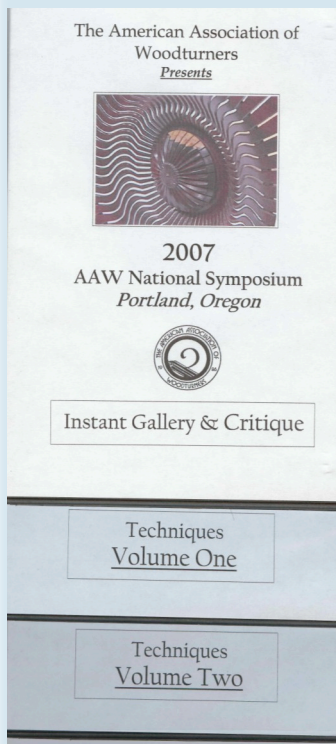
The contents of our library continue to be listed in the Members-only section of the MCW web site. If you do not have the password, please contact me. In addition, the list is also provided in this issue on the next two pages as a periodic convenience to all members. Note that we also have a few issues of the AAW's *American Woodturner* magazine, dating back to 2002, along with a few issues of *Woodturning Design*.

For a modest \$2 charge you can check out an item for a month. The best time to arrange check out is before our scheduled demonstrator begins their presentation. If an item is lost or damaged, the borrower will be responsible for replacing it. We encourage your suggestions regarding items to acquire.

## Lending Library - New Additions (Clif Poodry)

### NEW ADDITIONS: Tapes from the Gold Coast Woodturners

1. Alan Batty - Hand Thread Chasing
2. Trent Bosch - Vessels of Illusion
3. John Jordan
4. John Jordan - Bowl Turning
5. John Jordan - Hollowing
6. Ray Key - The Basic Box
7. Ray Key - The Finial Box
8. Bonnie Klein
9. Bonnie Klein - Turned Boxes with Threaded Lids
10. Bonnie Klein - Woodturning!!! Box Turning and Related Projects
11. Richard Raffin - Turned Boxes
12. Richard Raffin - Turned Projects
13. David Springett - Woodturning Wizardry
14. Mark St. Ledger - Skill Building
15. Chris Stott - Decorative Effects
16. Chris Stott - Decorative Effects and Coloring
17. Chris Stott - Turning Bowls
18. Del Stubbs - Bowl Turning with Del Stubbs
19. Dennis White - Bowlturning
20. Dennis White - Boxes and Goblets
21. Dennis White - Twists and Advanced Turning
22. AAW - Who We Are, What We Offer
23. AAW Scenes from 1994 Symposium
24. AAW 1995 Symposium - Instant Gallery
25. AAW 1995 Symposium - Instant Gallery Critique and Demos
26. AAW 1997 Symposium - Instant Gallery
27. AAW 1997 Symposium - Techniques
28. AAW 1998 Symposium - Instant Gallery and Techniques
29. AAW 1999 Symposium - Techniques V1
30. AAW 1999 Symposium - Techniques V2
31. AAW 1999 Symposium - Instant Gallery Critique
32. AAW 2000 Symposium - Instant Gallery Critique
33. AAW 2001 Symposium - Instant Gallery Critique and Techniques 1 and 2
34. AAW 2002 Symposium - Instant Gallery and Techniques 1 and 2
35. AAW 2003 Symposium - Instant Gallery Critique
36. AAW 2003 Symposium - Techniques V1
37. AAW 2003 Symposium - Techniques V2
38. AAW 2004 Symposium - Instant Gallery Critique
39. AAW 2004 Symposium - Techniques V1
40. AAW 2004 Symposium - Techniques V2
41. Turned Wood 1997 - Del Mano Gallery
42. Turned Wood 1999 - Del Mano Gallery



## Lending Library - Existing Video, Book, and Magazine Library (Clif Poodry)

### Existing Video Library

1. DVD Vessels of Illusion, Trent Bosch
2. DVD Decorative Utility Bowls, Trent Bosch
3. DVD Sculpting Wood; Beyond the Lathe, Trent Bosch
4. DVD AAW 2004 National Symposium Techniques Vol. 1
5. DVD AAW 2004 National Symposium Techniques Vol. 2
6. DVD AAW 2004 National Symposium Instant Gallery and Critique
7. DVD Two Ways to Make a Bowl, Stuart Batty and Mike Mahoney
8. DVD AAW Woodturning: Fundamentals of Sharpening
9. CD AAW American Woodturning 1986-1993 Volumes 1-8
10. CD AAW American Woodturning 1994-2001 Volumes 9-16
11. DVD Del Stubbs (recovery of classic 1985 video tape)
12. DVD The Skew Chisel, Alan Lacer
13. DVD The International Turning Exchange 2006
14. DVD AAW 2003 National Symposium Techniques Vol. 1
15. DVD AAW 2005 National Symposium Techniques Vol. 1
16. DVD AAW 2005 National Symposium Techniques Vol. 2
17. VCR Dennis White Teaches Woodturning - Turning Bowls
18. VCR Dennis White Teaches Woodturning - Classic Profiles
19. VCR Woodturning: a foundation course, Keith Rowley
20. DVD Turn It On, Vol. 1. Jimmy Clewes
21. VCR Palmer Sharpless, AAW
22. DVD AAW 2006 Techniques, V.2.
23. DVD Cindy Drozda's Fabulous Finial Box

### Magazines

1. *American Woodturner* 2002
2. *American Woodturner* 2003
3. *American Woodturner* 2004
4. *American Woodturner* 2005
5. *American Woodturner* - Winter 2006
6. *American Woodturner* - Winter 2007
7. *American Woodturner* - Spring 2007
8. *Woodturning Design* - Spring 2004 - Spring 2006

### Existing Book Library

1. Turning Bowls by Richard Raffan 2002, Richard Raffan
2. Hand or Simple Turning: Principles and Practice, Holtzappfel
3. The Principles and Practice of Ornamental or complex Turning, Holtzappfel
4. The Practical Woodturner, F. Pain
5. Woodturning in Pictures, Bruce Boulter
6. Woodturning Techniques, W.J. Wooldridge
7. 500 Wood Bowls
8. Rude Osolnik: A Life Turning Wood
9. The Art of Turned-Wood Bowls, Edward Jacobson
10. Mark Lindquist, Revolutions in Wood, Robert Hobbs
11. Lathe-Turned Objects, from The Wood Turning Center
12. Re: Turning, Works by Stephen Hogbin
13. Put A Lid on It: Containing Human Experience, AAW
14. Turning 20 – Still Evolving, AAW
15. Step Up to the Plate, AAW
16. The Woodturners Companion, Ron Roszkiewicz
17. The Fine Art of Small-scale Woodturning, William R. Duce
18. Turning Threaded Boxes, John Swanson
19. Adventures in Woodturning, David Springett
20. Small and Exciting Woodturning Projects, James A. Jacobson
21. Woodturning Traditional Folk Toys, Alan and Gill Bridgewater
22. The Fundamentals of Woodturning, Mike Darlow
23. Turning Wood with Richard Raffan, Richard Raffan
24. Woodturning: a Foundation Course, Keith Rowley
25. Woodturning Basics
26. Intermediate Woodturning Projects from The Best of Woodturning Magazine 1997



## Montgomery County Woodturners Newsletter

Newsletter Editor:  
Bert Bleckwenn  
Phone: 301-718-1850  
email: bableck@gmail.com

Montgomery County Woodturners -  
A local chapter of the American  
Association of Woodturners (AAW)



## Next Meeting

Date: Thursday, March 6, 2008

Time: 7:00-9:00 PM

Location: Woodworkers Club  
4950 Wyaconda Road  
Rockville, MD 20853  
Phone: (301) 984-9033

Program: **Michael Blake**  
**- Making Tool Handles**

We're on the Web at:

<http://montgomerycountywoodturners.org>

## MCW Contact Information

### Officers

President	Phil Brown	<a href="mailto:philfbrown@comcast.net">philfbrown@comcast.net</a>	301-767-9863
Vice President	Clif Poodry	<a href="mailto:cpoodry@aol.com">cpoodry@aol.com</a>	301-530-4501
Program Chair	Eliot Feldman	<a href="mailto:eliot@mathtechinc.com">eliot@mathtechinc.com</a>	301-493-9666
Secretary	Gary Guenther	<a href="mailto:gary.guenther@att.net">gary.guenther@att.net</a>	301-384-7594
Membership	Stuart Glickman	<a href="mailto:stuartglickman@gmail.com">stuartglickman@gmail.com</a>	301-279-2355
Treasurer	Doug Pearson	<a href="mailto:dspearson@verizon.net">dspearson@verizon.net</a>	301-229-6395
Newsletter Editor	Bert Bleckwenn	<a href="mailto:bableck@gmail.com">bableck@gmail.com</a>	301-718-1850

### Volunteers

Mentor Program	Donald Couchman	<a href="mailto:bigcouch@aol.com">bigcouch@aol.com</a>	301-963-6770
Group Buys	Arthur Mensch	<a href="mailto:jamensch@aol.com">jamensch@aol.com</a>	301-840-9378
Web Master	Doug Pearson	<a href="mailto:dspearson@verizon.net">dspearson@verizon.net</a>	301-229-6395
Lending Library	Clif Poodry	<a href="mailto:cpoodry@aol.com">cpoodry@aol.com</a>	301-530-4501
Photographer	Mike Colella	<a href="mailto:mike@colellaphoto.com">mike@colellaphoto.com</a>	301-942-2853
Photo Posting	Pat Taylor	<a href="mailto:patrick.dylan@gmail.com">patrick.dylan@gmail.com</a>	301-229-7781
Wood Identification	Ed Karch	<a href="mailto:ekarch@karch.com">ekarch@karch.com</a>	703-631-3263
Exhibit Committee	Phil Brown, Hal Burdette, and Clif Poodry		