

Volume 2008, Issue 9

September 2008



Box elder vessel



Walnut burl vessel



Cocobolo form

**Jamie Donaldson
Creations**

Montgomery County Woodturners

<http://montgomerycountywoodturners.org>

Page 1

Next Meeting and Demonstration (Eliot Feldman)

The next meeting will be:

Date: Thursday, September 11, 2008
Time: 7:00-9:00 PM
Location: Woodworkers Club
4950 Wyaconda Road
Rockville, MD 20853
(301) 984-9033

Agenda

- 6:45 - 7:00 PM Bring a chair, get a name tag, register your Show & Tell item with Richard Webster, donate to the Silent Auction, bid on a Silent Auction item, check out the Lending Library videos, and meet other members.
- 7:00 - 7:15 PM Business Meeting and Show & Tell
- 7:15 - 8:50 PM Program: **Jamie Donaldson - Square Bowls**
[Please Note: \$10 Demo Fee]
- 8:50 - 9:00 PM Pay for and retrieve your Silent Auction items, pack up, put the lathe and space back in order.

Demonstrator Profile - Jamie Donaldson

Jamie is an excellent turner who is also widely known and respected on the WoodCentral and WoW woodturning forums for the extremely helpful commentary he provides on photography issues. [We have a link to his famous article, "The Phrugl Photo Studio Way to Shoot Woodturnings", on the "Links/General links" page of our Web Site.] One of his current interests is making dynamic "square" bowls of various sorts – he'll do one for us. An example of his work graces page 1 of the recent Winter 2007 issue of *American Woodturner* as a result of being one of the small number selected for critique from the Instant Gallery at the 2007 AAW Symposium in Portland. Jamie will also be doing the usual events for CAW this weekend -- he will do different demos for the two clubs. Examples of his work from his web site are included in the side bar. For further examples of his work, see www.jamiedonaldsonwoodturner.com/gallery01/index.html.

Special Points of Interest:

- MCW Picnic
- Fair Demo

Inside this issue:

Meeting & Demo	1
President's Perspective	2
Conferences & Events	3
News about our Members	3
Financial Report	3
Future Meetings	3
Editor's Viewpoint	4
MCW Picnic	5
August Meeting Minutes	6
Member Camaraderie	7
August Meeting Demonstration	8-9
Show & Tell	10-11
YMMV	12
Be Safe	13
25th Anniversary Project	13
Click It	14
Turn the Page	15
AAW Open Letter	16
Membership Information	17
Chapter Contacts	18

President's Perspective (Phil Brown)



I'm looking forward to hearing about the woodturning demonstrations that Bert organized and conducted as an MCW project at the County Fair after our August meeting.

Be sure to put Saturday, September 20th, on your calendar for our first Annual Picnic at Mike Colella's home in Kensington. See details on page 5 including a request to RSVP so Mike can have a count of attendees for food and refreshment planning purposes.

I'm pleased to report that we have two more exhibit opportunities coming up:

- The first is in the Bethesda Public Library from December 5th to January 30, 2009. There is space for approximately 50 pieces on glass shelves about 10" deep, in four wall cases. I hope that 25 of you will make a special effort to participate with two pieces, particularly since you will likely also be making pieces for gifts and/or sales for the holiday period. Your names and phone numbers will be posted should someone want to purchase your piece after the exhibit closes, or consider other pieces you may have available. The library carries insurance at the value you declare for your work.
- The second opportunity is a proposed juried and joint exhibit with Chesapeake Woodturners (CW) of about 30 pieces at the Columbia Art Center, May 14 to June 14, 2009. CW has many experienced turners, so there may be a lot of competition. I hope many of you will focus on your designs and turn several nice pieces for submission this winter.

When thinking of turned wood exhibits, we should remember that photographers, painters, and other artists with trees as their subject can collaborate with us to enhance our message to the public. For example, the Librarian in Bethesda, Patricia Buck, plans to contact some two-dimensional artists to exhibit their work at the same time as our turned work is shown. If I or others ever got energized, we could propose a similar exhibit with educational demonstrations involving several local chapters at the Botanic Garden west of the Capitol on the Mall. (Unfortunately these projects detract from turning time.)

I'm expecting some officer turn over at the end of this year. We will need several members to take a turn as an officer in the December elections. Do think about it and volunteer when the time comes.

With vacations in August, turnout was light for Judy Ditmer's demonstration. I hope many more of you can come to get acquainted with Jamie Donaldson's work on September 11th.

Classes & Events (Phil Brown)

VisArts Woodturning Classes

Plates, platters, and wooden pens are woodturning classes announced at VisArts, 155 Gibbs Street in Rockville for this fall. See page 9 of the course descriptions at www.visartscenter.org/pdfs/Fall2008_FinalCatalog.pdf

Buy & Sell Tools—An Opportunity on September 20th

The Howard County Woodworker's Guild is holding an auction of new, used, and antique tools on September 20th from 10 AM to 2 PM at the Florence Bain Senior Center, 5470 Ruth Keeton Way, in Columbia, MD. Drop items off at the Center on Sept 19th from 1:30 PM to 4 PM, or on Sept 20th from 7 AM to 9:30 AM. All items must be removed by 3 PM. For more information call Howard Eiserike at 301-776-5155, or Dorothy Shannon at 410-461-0887.

News about our Members (Phil Brown)

Ed Karch and Phil Brown will have pieces in the Washington Woodworkers Guild exhibit of member's work at Del Ray Artisans in Alexandria, from October 10th to November 1st. As in many past WWG exhibits, Phil has participated on the organizing committee.

Clif Poodry teaches INTRODUCTION TO BOWL TURNING September 27th and November 22, 2008, and ADVANCED BOWL TURNING October 25-26th and December 20-21st at the Woodworkers Club where we meet in Rockville. For more information see: <http://www.woodworkersclub.com/practice%20class1.htm>

Financial Report (Doug Pearson)

Current balance is \$2,560.54

Future Meetings (Eliot Feldman)

If you have suggestions for future meeting demonstrators, or would consider demonstrating something yourself, please contact our Program Director, Eliot Feldman at eliot@mathtechinc.com or by phone at 301-493-9666.

- **September 20 - Picnic at Mike Colella's house. Don't miss it!**
- **October 9 - TBD**
- **November 6 - TBD**
- **December 11 - Keith Holt - Natural-edge 'Pouring Vessel'**



Keith Holt
Natural-edge pouring vessel

2008 Meeting Schedule		
January 10	February 7	March 6
April 10	May 8	June 12
July 10	August 7	September 11
October 9	November 6	December 11

Editor's Viewpoint (Bert Bleckwenn)

Four MCW members had great weather and a great time demonstrating at this year's Montgomery County Agricultural Fair. Jude Herges, Clif Poodry, Tom Ankrum and myself all took turns at both ends of the great wheel lathe furnished by Chris Holmgren of Seneca Creek Joinery. While we did not get much chance to turn any stellar objects, we all had fun engaging with fair-goers and enlisting youth in powering the great wheel.

We were located in the midst of the Old Timer's Area with old-time engines and farm tractors on either side of us. Our backdrop was a large farm mural on the building wall behind us and a nice, large shade tree close by. We also were located under a large tent set up by the blacksmith's who were located nearby. The setting and the weather were ideal.

The traffic varied from time to time during the weekday evening hours, with the busiest times being during the weekend days.

Clif Poodry brought his son Colin who also had a great time. Clif commented that with Colin present and taking a short turn at the great wheel or at the lathe, they seemed to be able to draw a lot more kids with just having one kid present. Something for us to keep in mind when we do future demonstrations.

Jude Herges and Tom Ankrum, both new members, enjoyed the experience and had an opportunity to share stories and just sit back in our lounge chairs watching the people with me during the quieter moments. At times, one of the old timers would fire up a very large, but ancient gasoline engine that shook and rattled as it belched smoke and noise, but was a crowd pleaser and created some additional traffic for us.

Tom Ankrum and I also had the opportunity to try out turning techniques and talk shop as well. An interesting crowd-pleaser was Tom's demonstration of turning captured rings with a hook tool newly made from an Allen wrench.

We also had an opportunity to pass out a few MCW brochures along with some of our customized MCW personalized business cards. Hopefully, we might see a couple new visitors and possibly new members in upcoming MCW meetings as a result of contacts made during the fair.

I also had a chance to explore the possibility of having power available for next year's Fair and demonstrating with a Jet mini-lathe as well. The Old Timer's Co-chairperson, Judy O'Neil, was receptive to the idea, so let's see if we can generate interest in repeating this activity in 2009.

Many thanks to Chris Holmgren for providing the lathe and, Clif, Jude, and Tom for demonstrating and sharing the experience with me.



MCW Picnic - September 20 (Mike Colella)

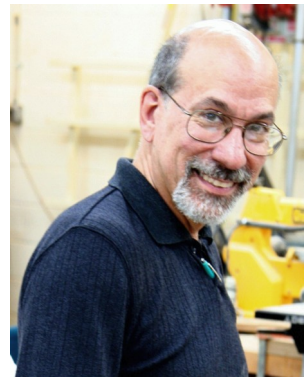
Welcome all fellow woodturners to MCW's First Annual Picnic -- to be held at Mike Colella's backyard on Saturday, September 20th, from 1 p.m. till everyone gets tired of talking wood. We will provide the meats (hot dogs, burgers, and good Italian sausage), rolls and condiments, setups etc., and drinks (sponsored by MCW). All attending should bring a dish to share: picnic salads, fruits, veggies, dips, etc., and desserts of any sort. (We all like sweets.) Most importantly, bring yourself and a spouse/friend if you choose -- we have plenty of room.

My wife Sue and I love to offer our humble space for picnics, and the effort to pull it off, BUT a picnic is only successful when a whole bunch of people come to enjoy it. Since we are a new club with night meetings, there isn't a whole lot of time to get to know each other -- *this is the time*. Feel free to bring something to show off; we won't do anything formal, but I always like looking at everyone's work.

Please RSVP to Mike at 301-942-6850 any time just so we know how much food to prepare, and I can keep track of who's bringing what (so we don't end up with 32 dishes of brownies). Our house is in Kensington, about 10 minutes from the Woodworkers Club.

Our address is:

2806 Jennings Road
Kensington, MD 20895
301-942-6850

**DIRECTIONS:**

-- From 495 West of Connecticut Ave. (from VA or 270):

Take Beltway to Connecticut Ave. Exit, bear LEFT at exit Y before light.
Turn LEFT at Conn. Ave. light. You will be heading North toward Kensington.
Go about 2.5 miles into Kensington, to PLYERS MILL Rd. (firehouse on left corner).
Turn RIGHT on Pliers Mill.
Continue straight, thru blinking light, 2 stop signs, down the hill & up to JENNINGS Rd. on your Left (about 1/2 mile total).
Turn LEFT onto JENNINGS Rd. The house is 2 blocks up on right, # 2806.

-- From East of Georgia Ave. on the Beltway:

Take Beltway to Georgia Ave., Exit 31A towards Wheaton (will be your 1st exit).
Turn LEFT onto PLYERS MILL Rd. after traveling 1.3 miles on Georgia Ave.
Go to your 4th right (0.5 mile) to MAYBROOK and Turn RIGHT.
Go 1 block to JENNINGS Rd., Turn LEFT.
Our house is 4th on LEFT, # 2806.

Looking forward to seeing everyone!

Mike & Sue

August Meeting Minutes (Bert Bleckwenn)

Twenty-one members were in attendance at the August meeting. Phil Brown discussed the following items:

- We are still missing several items from our Lending Library, please return them for the benefit of you fellow members.
- \$10 was collected from each member for the demo.
- A flyer was available announcing the upcoming Tool Auction to be held by the Howard County Woodworkers Guild in Columbia, MD. If you have unused tools or are looking for some purchases, check this out.

September 20, 2008 10:00 a.m. to 2:00 p.m.
Florence Bain Senior Center, Joseph Square
5470 Ruth Keeton Way, Columbia, MD
Contact: Howard Eiserike (301-776-5155)
or Dorothy Shannon (410-461-0887)

Drop off items Sept 19th 1:30-4:00 p.m. or Sept 20th 7:00-9:30 a.m.
10% SELLERS FEE; items sold as-is. Items not sold/removed by
3:00 p.m. Sept 20th become property of the Guild.

- Bert Bleckwenn recapped plans for the Montgomery County Agricultural Fair Turning Demonstration Project. Four members including Tom Ankrum, Bert Bleckwenn, Jude Herges, and Clif Poodry will be demonstrating throughout the Fair which will run from Friday, August 9th, through Saturday, August 16th. Stop by and see us at the Fair.
- Don't forget to mark your calendars for our upcoming chapter Picnic on September 20th to be graciously held at Mike Colella's home. While there won't be any turning, members are encouraged to bring some of their turnings for sharing during a Show & Tell. Food and drink will be provided by Mike Colella and MCW, but each member is encouraged to bring a salad, fruit, or dessert that could serve 6-8 participants.

An interesting picture of an antique Russian treadle lathe brought in by one of our members was circulated during the meeting.

Mike Blake captured information for our Show & Tell while Hal Burdette and Mike Colella took pictures of the items.

Mike Blake led the S&T discussion with several interesting pieces brought in by members.

Silent Auction submissions included a neat-looking burl and several brass fittings, both donated by Bob Browning. The brass fittings can be used for making ferrules for tool handles like those we've seen Mike Blake demonstrate.

Eliot Feldman introduced Judy Ditmer as our guest turner for the evening.

An antique lathe seen in Russia

this spring.

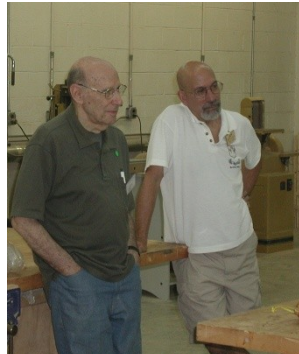


Locust bump-on-a-log burl
donated by Bob Browning

Member Camaraderie (Bert Bleckwenn)



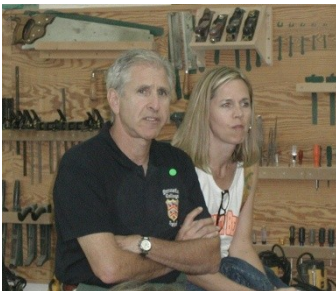
Tom Ankrum, Don Van Ryk,
Tim Aley, guests



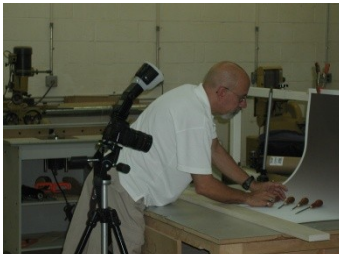
David Jacobowitz,
Mike Colella



Stuart Glickman, Tom Ankrum



Denis & Vickie Zegar



Mike Colella



Jude Herges,
Russell Iler



Hal Burdette, Russell Iler,
Eliot Feldman



Phil Brown, Stuart Glickman

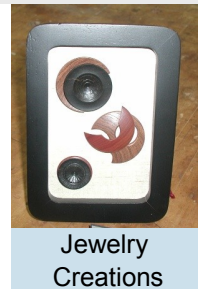


Guest, Carl Powell, guest, Vickie Zegar,
Kathy Bleckwenn, Hal Burdette

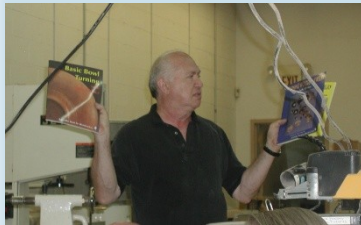
August Demonstration - Judy Ditmer (Bert Bleckwenn)

Box Turning and Selective Bleaching

Eliot Feldman introduced Judy Ditmer, and the two of them proceeded to banter back and forth about identifying the professional turners within the club. Judy is an accomplished turner grounded in her original background as an artist. Besides being an author of two books, teaching, and demonstrating, she is also known for her line of turned jewelry.



Jewelry
Creations



Eliot highlighting Judy's books



For the evening's demonstration, Judy elected to turn a small lid for a box and then demonstrated her bleaching technique resulting in a two-tone finished look. Throughout the demo, she shared techniques, tools, and alternatives that she employs in her turning.



Judy in her turning regalia



After separating the lid portion from a prepared blank, Judy proceeded with demonstrating her individual hollowing techniques. She pointed out that she uses a lot of different tools depending on the size and particular stage of turning. For certain situations, she prefers the old-style carbon-steel gouges and scrapers as they take a sharper edge, though they will dull quicker and require

more frequent touch-up. As an example, she passed around one of her original Shopsmith carbon-steel gouges, that she still favors for turning, that has the back-side of the grind rounded over to avoid bruising the wood.



Another example of one of her tools was a simple hook tool made from a cut-steel cement nail. This is especially useful for obtaining a smooth cut on end-grain in the bottom of a lid or base.



Intent observers

After hollowing the inside of the lid, she proceeded with cutting the snap-fit recess on the inside and then applied an oil/wax finish that provided a nice flat-luster appearance.

Judy then moved on and sized the base of the box for a snap-fit. If you happen to take one-too-many cuts and end up with a slightly loose fit as Judy "demonstrated", you can sometimes recover by wetting the rim of the base and applying a little saw dust to get a tighter fit so the outside of the top can be completed.



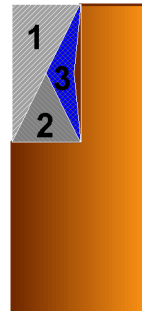
Applying finish to the lid

(Continued on page 9)

Judy Ditmer Demonstration (Bert Bleckwenn)

(Continued from page 8)

An interesting cutting technique that Judy used for both the lid lip and base lip was the sequence of cutting that left a very-slight “dome” which provides for a good snap-fit. Her sequence was 1) cutting the inside first at an angle, 2) cutting the outside next at an opposite angle leaving a pyramid and then 3) reducing the pyramid until a snap-fit is achieved. The remaining “pyramid” in the lid and base are ever-so slight, but just enough to give that familiar “snap-fit” that is a signature of well-fitting boxes.



With the lid fitted to the base, Judy turned the outside of the lid to a pleasing dome shape with three delineations in the dome. The delineations provide separation areas for the subsequent bleaching and make it easier to register the brush during the bleaching process. She uses 320 or 400 grit sandpaper for most woods but suggests 600 grit if it is a hard exotic.



For bleaching, Judy uses a two-part wood bleach that is fairly caustic, so use caution. She applied the bleach with a good-quality, angled brush, applying 2-3 applications with a couple of minutes of heated air-drying between applications using a hair dryer. Judy said that additional bleaching applications don't improve the result.



After bleaching, she applied a neutralizer consisting of 1 part vinegar with 2 parts water. This is important. She then applied her oil/wax finish to the top and ended up with a nice, distinctive looking lid.



A tool that she has found useful is shortening and sharpening a thin putty knife for use in separating a tight lid from a base. Another interesting aid was her portable tool holder, which consisted of a ~2" square board drilled with a series of ~1" holes and then sawn lengthwise. When the two pieces are laid parallel on a flat surface or lathe-bed, with the half-circles facing up, you have a nice holder for your various tools.



A very nice demo!

Show & Tell (Mike Colella & Bert Bleckwenn)



Don Van Ryk
Ornaments, pine/maple

Mike Blake
Tool Handles, dogwood
and Narra 3'-6"



Denis Zegar
Bowl, osage orange 8"



Show & Tell (Mike Colella & Bert Bleckwenn)

David Jacobowitz
Bowl, Norfolk Island pine
10" x 5-1/2"



Elliot Schantz
Bowl, walnut



Tim Aley
Bowl, locust 5"x2"

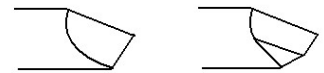


Tim Aley
Bowl, spalted English
walnut 10"x5"

YMMV (Gary Guenther) *Tips Hints Ideas Clues*

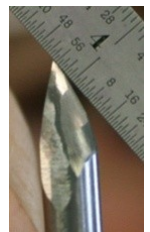
Removing the heel of the bevel from your gouges

Over the years, I have seen the shapes of the gouges used by demonstrators at CAW and MCW meetings. There is a trend among the professionals such as David Ellsworth, JoHannes Michelsen, Trent Bosch, Cindy Drozda, and many more, to round off the heel of the bevel and, further, to go with a very narrow working bevel. The latter is a matter of taste, style, experience, safety, and philosophy, so I won't get into that part of it, but regardless of the width of the working bevel you chose to have adjacent to your cutting edge, you can safely remove the heel. This could also be called "adding a secondary bevel", "relieving the bevel", "rounding off the heel", etc. It's all the same thing, regardless of what you call it. The point is that if you are not religiously "floating the bevel" the way Stuart Batty taught us, that heel is going to be acting as a pivot point and squeezing down into the wood, particularly on a concave cut. In many woods, this will leave a visible mark that may or may not sand out easily.



The thing that brought this to my mind right now is I turned some of that Bradford pear storm wood. I turned it before Stuart's demo, and I got a series of bruises that appear as rings (inset photo). Bradford pear seems to be particularly sensitive to that. I had a nice smooth cut on this bowl, and I did not have to do much sanding. As a result, the heel marks are visible in the finished piece as a periodic discoloration. Bummer. The good news is that this is an end-grain bowl, so they look like the grain pattern, and the "man on the street" would never know. But I know. And I expect you would recognize them for what they are. So I want to make sure it doesn't happen again.

I took most of my gouges and ground off the heels. It's a very quick and simple action on your grinder – no reason not to do it. My bevel widths went from around 3-4/16" to 2-3/16" – still enough to float (remember, we no longer "rub" them). Unless you go all the way into a fully rounded (convex) shape for the bottom of your gouges, per David, Hannes, Trent, & Cindy (inset photo), you'll still have plenty of bevel left, and you may still have a small heel, but the angle and sharpness of that heel will be significantly reduced, and so will be the damage it can cause. Once you go this far, I imagine you'll at least add a third bevel to soften the remaining heel, and you may end up with the ideal convex curve.



This is one case where we do not want to be well heeled.

+++++

Always use common sense. Things that work in one situation may not work in another. Follow all Safety Rules. If it feels wrong, it probably is; stop and rethink.

Your Mileage May Vary

BE SAFE - Safety Tip of the Month (Gary Guenther)

Tape over your forceps finger holes

It is a fairly common practice to use a pair of locking forceps to hold sanding materials for working inside hollow forms, deeply-hollowed open forms, and other areas where we can't, or don't want to, put our fingers. This can be a useful approach, but it comes with a very real danger.

Turners have been seriously injured because they put their fingers through the finger holes in the forceps handles, just like they were designed for, and then had a catch. The message here is a very simple one -- as a woodturner, you *do not* want to put your fingers into those finger holes. Period.

Unfortunately, we are so used to using things like scissors, that our fingers just naturally go right in there *without thinking*. It's a reflex action you want to avoid. There is a very simple way to make sure this never happens. You have to remove temptation by taping the holes shut. Even though I know the reason, it seems like every time I pick up my forceps, I'm briefly surprised to find the holes taped shut. Then my brain clicks over to "oh yeah, now I remember". Believe me, you don't want to discover this one the hard way.

Right now, while you're thinking about it, go down and tape your finger holes shut so your memory has nothing to do with your safety.



AAW Members Invited to Join 25th Anniversary Project

The editors of the AAW 25th anniversary book invite AAW members to submit short essays about their introduction to the woodturning field and the AAW as an organization.

"We're going to go after writing from the well-known members, but we're also looking for writings from those who might not be so well known," the volume's editor, John Kelsey, explained. "We want to be sure ordinary members have a way to tell their stories in the anniversary volume."



The AAW Board of Directors has appointed Kelsey, of Lancaster PA, as editor and manager for the 25th anniversary project. He'll be working through 2008 and 2009 to gather material for the 256-page book.

"We'd like to hear from as many members as we can," Kelsey said. "We'd like members to write about how they came to the field of woodturning, and what it has meant in their lives."

The editorial team also invites members to submit photographs they have taken at AAW events. It's important that these photographs be dated, and they should be accompanied by as much information as possible about the turners and turnings that appear in them.

Members who would like to discuss this project, or participate in it, are welcome to contact the editor by email at editorkelsey@gmail.com.



Ask Dale

Web Site of the Month

CLICK IT - Web Site of the Month (Gary Guenther)

A recommendation of a web site link I believe to be worth your viewing time:

This month's site is www.woodturningdesign.com/askdale

I am a subscriber to the *Woodturning Design* magazine, and I find it to be one of the two best woodturning magazines published in the U.S. (*American Woodturner* being the other). A feature of the magazine is a 'Question & Answer' page by Dale Nish, a recognized master woodturner, with over 30 years of experience, and author. (I have three of his books – see your favorite bookseller.) The point is that Dale's columns are also available at the above link on the Woodturning Design web site. The questions are good, and Dale's answers are well thought out, detailed, and meaningful. (John Lucas also recently recommended this web site in a WoodCentral post.)

This is an incredible resource! This web page contains a list of all of the questions that Dale has answered in the last 13 issues. You can scan the questions for ones that interest you and click on the link for the desired issue – that brings up Dale's answers. For example, issue 14 has excellent, detailed commentaries on the differences between bowl gouges and spindle gouges and on the problems of cracking/checking of green wood and approaches to take to minimize it.



While you're there, check out the Woodturning Design "Showcase" at www.woodturningdesign.com/showcase/index.shtml. This striking page shows the works of the woodturning artists that have been featured in the 'Designer Showcase' section of the magazine. Here are lovely pieces from which you may derive some inspiration. Included are a goblet by CAW's Patrick O'Brien, a blossom of the type we saw demonstrated by Ed Kelle, and a number of eye-catching works by our online friends at WoodCentral.

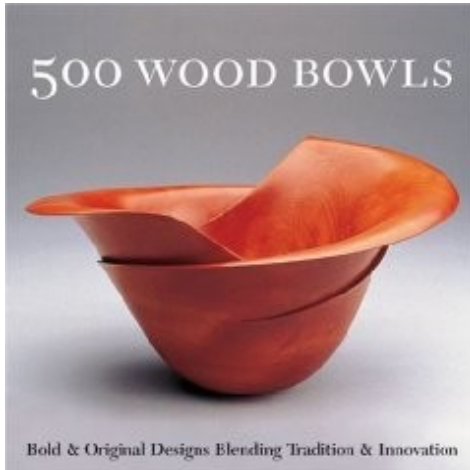
Mentor Program (Donald Couchman)

For personal help from a more experienced MCW member, contact Don Couchman at 301-963-6770 to identify a potential mentor for you.

Use a Mentor!

TURN the PAGE - Book Review (Gary Guenther)

There are a great many excellent woodturning books available in the marketplace. Here is one of my favorites for your consideration.

500 Wood Bowls: Bold & Original Designs Blending Tradition & Innovation

Juried by Ray Leier, Jan Peters, and Kevin Wallace

8" x 8" soft cover; 420 pages

Copyright 2004 by Lark Books (a division of Sterling Publishing Co. Inc., NYC)

All color; high-quality, professional photography

Typical price: new \$16.5 (from \$10 used); in stock at Amazon.com

5-star (highest possible) rating by readers

This book is in our Lending Library – contact Cliff Poodry if you would like to have him bring it to a meeting for you.

The publisher says: “The bowl is one of the most traditional forms, but contemporary artists who work in wood understand that it has tremendous potential. These 500 exquisite examples, many by pioneering artisans, show just how much the bowl has been “reinvented” by craftspeople all over the world as both an iconic object and as a departure for self-expression. On display are a wide range of woodworking approaches, from chisel to chainsaw to router to bandsaw. Some have carvings on the surface; others feature paint and mixed media; while many more stay close to what nature provided, with the wood simply sanded and sealed. The talented creators include James Prestini, Bob Stocksdale, Rude Osolnik, Mel Lindquist, Ed Moulthrop, Mark Lindquist, David Ellsworth, and William Hunter.”

This is basically a book full of photos of beautiful bowls. In my opinion, it doesn't get any better. I would add that it also contains work by Trent Bosch, 3 pieces by our own President, Phil Brown (!), Christian Burchard, Cindy Drozda, Clay Foster, Mark Gardner, Stephen Gleasner, Stephen Hogbin, Michelle Holzapfel, John Jordan, our friend Neil Kagan from CAW, Ron Kent, Art Liestman, Bill Luce, Bert Marsh, Bill Neddow, David Nittmann, our friend John Noffsinger from CAW and CW, Binh Pho, Graeme Priddle, Betty Scarpino, Hayley Smith, our friend Frank Stepanski from CAW, Al Stirt, Keith Tompkins, Jacques Vesery, Hans Weissflog, Andi Wolfe, and, of course, many, many more. This name list alone should be all it takes to get you to buy this book.

Let's just say that when you open this book, you won't be able to put it down. My copy has a large number of pages bookmarked for further reference. This is a very eclectic selection -- some forms are classic, and others are wildly contemporary. It contains a collection of outstanding turning and highly innovative design and transformation. The bowls incorporate a wide range of woods from common to exotic. Styles vary from right-off-the-lathe to heavily modified by carving and other artistic forms of decoration. This book is a treasure of inspiration from the craftsmen/artists to us.

Letter To Chapter Members About Member Benefits from AAW

It's August already. Summer is drawing to a close. School will soon be back in session. The weather will turn cooler, and our focus will turn from outside activities to inside. Many of us will be spending much more time at our lathes over the coming months and attendance at AAW Chapter meetings will increase with the change of seasons.

All AAW members know what they like best about their membership but some chapter members may not yet be AAW members and may wonder what benefits await them when they do join the AAW. If someone does not join AAW, the result may be they do not get as involved, may not learn as fast as they could, may not get "hooked" on woodturning, and may not become contributing members of your chapter. What a lost opportunity that would be.

There are eight primary benefits of membership in the AAW. Following is a brief description of each benefit:

- 300 AAW Chapters in North America and around the world which are a great place to meet other woodturners, to share ideas, and to learn. They have monthly meetings with demonstrations and many other activities
- AAW Journal: *American Woodturner* is The Journal of the American Association of Woodturners with high quality, full-color publication with a wealth of information for woodturners with articles on all aspects of woodturning and is published quarterly. [Ed. Note: the current issue is one of the best ever -- don't miss it.]
- AAW Resource Guide: Lists all AAW members with contact information and lists all local chapters, with addresses and meeting times as well as information on Chapter Best Practices, the AAW Member Web Site, Star Chapters, 20th Anniversary Chapters, AAW bylaws, AAW Board of Directors, educational materials such as books and videos, lathe safety guidelines, and a host of other things and is published annually.
- AAW Symposium: World's largest gathering of woodturners with approximately 60 world-class demonstrators, a trade show with every major manufacturer of lathes, tools, and turning supplies and accessories in the world, an Instant Gallery with hundreds of the world's best wood turnings, a Youth Training Program, with lathe/equipment give-aways to participants, a banquet and auction of selected woodturnings from the Instant Gallery and much, much more. The 2009 Symposium in Albuquerque June 26-29, 2009
- AAW Website: www.woodturner.org which is a great source of current information about the AAW and contains contact information for every AAW member world-wide, contact information for demonstrators, a guide to all local chapters, meeting times, locations, and contacts. It has current events, a gallery of current work, membership information, and much, much more.
- AAW Forum: www.aawforum.org which is an interactive web site for AAW members where you can interact with woodturners from around the world. It is a great source of current information where you can post your questions, comments, information about your woodturnings, photos, etc., and seek information about woodturning resources, machinery, tools and supplies, wood and publications
- Educational Opportunity Grants: Almost \$100,000 in grants given away this year for individuals, clubs, schools. They are for any qualifying educational opportunity. See the AAW web site for details.
- AAW Liability Insurance: Liability insurance for Chapter sanctioned events. See the AAW web site for details

Anyone who wishes to join the AAW may become a member simply by visiting the AAW web site at <http://www.woodturner.org/org/mbrship/> and signing up.

To see a presentation on the Value of Membership in the AAW, You can view either of two versions. One is in Microsoft PowerPoint format at http://www.woodturner.org/info/news/letters/AAW_Value_Proposition.ppt#276,1,Slide.

The other is in PDF Adobe Reader format at http://www.woodturner.org/info/news/letters/AAW_Value_Proposition.pdf.

Thanks and good turning!
Tom Wirsing - AAW Board Member

Membership Application Form and Interest Profile (Stuart Glickman)

MCW Membership Application forms available at: <http://montgomerycountywoodturners.org/Membership.aspx>

To become a member, please print out, complete and either mail it or personally deliver it to Stuart Glickman along with a check for \$20.00 (or less, discounted by calendar quarter) payable to Montgomery County Woodturners. New membership in the 2nd quarter \$15, 3rd quarter \$10, and 4th quarter \$5. Renewals \$20. A Family membership is \$30.00. Please ensure you include your email address, as notification of the monthly MCW Newsletter publication is made electronically. In addition, include your personal website if you would like it referenced on the MCW website as a way to showcase your work.

Express your interests and needs. We encourage everyone to complete a MCW Member Interest Profile which is included with the Membership Application form on the MCW website. This is of great benefit to the officers as we develop programs to meet everyone's needs. Please take the time to complete your profile and provide it to Stuart Glickman at the next chapter meeting.

Member Discounts (Art Mensch)

Rockville Woodworkers Club <http://www.woodworkersclub.com/>



MCW and other club members: remember to support the Woodworkers Club by purchasing turning supplies during our meetings and save 10% on the retail price.

2Sand.com <http://www.2sand.com> or call 301-897-1590



2Sand.com is a coated abrasive specialist focused on fast service and fair prices that provides superior sanding discs, sandpaper sheets, and woodturning tools to woodshops.

MCW Member Discount - 10% (discount code available in the restricted area of the MCW Website)

Craft Supplies USA <http://www.woodturnerscatalog.com>

Club members: Save 10% on all finishes & disc abrasives with Craft Supplies USA! Just mention your club name and save, all year long. You can always see current club specials by clicking on the members login button on their homepage. New 15% specials are updated on the 1st of the month, which can be accessed by clicking on the hotlink above and going to the club member login located on the lower right portion of the page.



Hartville Tool Club <http://www.hartvilletool.com/>

The first year we get a 20% discount on regularly priced items and a 15% discount in subsequent years along with our chapter receiving a 3% rebate.



If you haven't signed up for this program, new participants should let Art know first that they wish to join the program. Then, he will let Hartville know they are members of MCW and sign them up.

Catalogs and ordering instructions are available from Art or at our meetings.



Montgomery County Woodturners Newsletter

Newsletter Editor:
Bert Bleckwenn
Phone: 301-718-1850
email: bableck@gmail.com

Montgomery County Woodturners -
A local chapter of the American
Association of Woodturners (AAW)



Next Meeting

Date: Thursday, September 11, 2008

Time: 7:00-9:00 PM

Location: Woodworkers Club
4950 Wyaconda Road
Rockville, MD 20853
Phone: (301) 984-9033

Program: **Jamie Donaldson -
Square Bowls (\$10 demo fee)**

We're on the Web at:

<http://montgomerycountywoodturners.org>

MCW Contact Information

Officers

President	Phil Brown	philbrown@comcast.net	301-767-9863
Vice President	Clif Poodry	cpoodry@aol.com	301-530-4501
Program Chair	Eliot Feldman	eliot@mathtechinc.com	301-493-9666
Secretary	Gary Guenther	gary.guenther@att.net	301-384-7594
Membership	Stuart Glickman	stuartglickman@gmail.com	301-279-2355
Treasurer	Doug Pearson	dspearson@verizon.net	301-229-6395
Newsletter Editor	Bert Bleckwenn	bableck@gmail.com	301-718-1850

Volunteers

Mentor Program	Donald Couchman	bigcouch@aol.com	301-963-6770
Group Buys	Arthur Mensch	jamensch@aol.com	301-840-9378
Web Master	Doug Pearson	dspearson@verizon.net	301-229-6395
Lending Library	Clif Poodry	cpoodry@aol.com	301-530-4501
Still Photographer	Mike Colella	mike@colellaphoto.com	301-942-2853
Candid Photographer	Gary Guenther	gary.guenther@att.net	301-384-7594
S&T Recording	Richard Webster	gtjazz@comcast.net	301-251-1605
Wood Identification	Ed Karch	ekarch@karch.com	703-631-3263
Exhibit Committee	Phil Brown, Hal Burdette, and Clif Poodry		