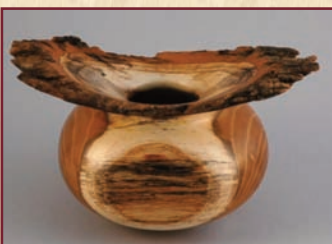


**IN THIS MONTH'S ISSUE**

President's Perspective..... 2  
 Raffle of Ellsworth Bowls..... 2  
 Member News..... 3  
 Financial Report..... 3  
 Membership Report..... 3  
 Exhibit News..... 4  
 Call For Entries..... 4  
 AAW News..... 4  
 March Meeting Minutes..... 5  
 March Show & Tell..... 6-14  
 March Demonstration..... 15-19  
 AAW Open Letter..... 20  
 Future Demonstrations/Events..... 21  
 Future Meetings, Contact  
 and Discount Information..... 22

**— SPECIAL NOTICE —**

PATRICK HAS AGREED TO CRITIQUE *SHOW & TELL* ITEMS AT THE APRIL MEETING. PLEASE MEASURE ITEMS IN ADVANCE TO SAVE TIME. THERE WILL BE A BRIEF INTRODUCTION OF EACH ITEM BY THE TURNER.



**NEXT MEETING ANNOUNCEMENT**

**APRIL 2010 MONTGOMERY COUNTY WOODTURNERS MEETING...**

**DATE** Thursday – April 8, 2010

**TIME** 6:30 PM – 9:00 PM

**LOCATION** The Woodworkers Club  
 4950 Wyaconda Road  
 Rockville, Maryland 20853  
 301/984-9033



**AGENDA** 6:30-7:00 — Bring a chair, if you wish... be sure to wear your name tag... register items for *Show & Tell* with Richard Webster... make your bid on *Silent Auction* items... sign out and pay Cliff Poody for videos from the club's *Lending Library*.

7:00-7:30 — Business meeting... *Show & Tell*.

7:30-8:45 — PROGRAM – Patrick O'Brien will demonstrate his signature goblet and a winged vessel.

8:45-9:00 — Pick up and pay for any of your items from the *Silent Auction*... help pack up and clean up the space.

**APRIL DEMONSTRATION**

**PATRICK O'BRIEN** is one of those enviable turners with a recognizable style. He describes his style as *trying not to get in the way of the spirit of the wood. As I begin to turn, and the grain, spalting, and other "flaws" are revealed, I feel as if the soul of the wood is coming out.*



Patrick fell for turning when he saw the work of Alan Hollar. He jumped in and has been turning since October 2001 when he took a course at the John C. Campbell Folk School in North Carolina. He returned to the school several times for courses and then as an instructor. He has studied with David Ellsworth, Christian Burchard, Al Stirt, Alain Mailland, Doug Barnes, Cindy Drozda, Dick Sing, Stuart Batty, and Alan Hollar. His turnings were selected for the 2005 & 2008 *Washington Wood* shows and in 2004-2005 were juried monthly into the *Art League of Alexandria* shows at the Torpedo Factory. He participates in the annual *Art on the Avenue Arts & Crafts Festival* in Alexandria.

In 2003, Patrick began a business called "OhBeWood" <[www.ohbewood.com](http://www.ohbewood.com)>, opened a studio in Alexandria, and started selling his work. In September 2008, he moved to a permanent studio at the new Lorton Workhouse Arts Center, a new artists' community with more than 60 studios and several galleries where their works are sold. His work is always available at the Workhouse, which is open to the public Wednesday through Sunday, and a limited selection is also at the new Del Ray gallery, A Show of Hands, at 2301 Mt. Vernon Avenue.

Patrick especially likes to work with branches – natural-edge goblets and winged, open-form vessels – he has agreed to turn one of each for us.

## PRESIDENT'S PERSPECTIVE

BERT BLECKWENN

**DAVID ELLSWORTH** provided a truly memorable demonstration and a frank, generous, and informative *Show & Tell* critique at our March meeting. His reputation preceded him, evidenced by the 40-person audience turnout. What's more, David generously donated 15% of the total sales of his signature tools to MCW – for a total of \$85.<sup>00</sup> – to support our video capabilities.



This goes hand in hand with **John Jordan's** earlier donation of two hollowing tools for our *Silent Auction* to also help fund our video efforts. These two examples of generosity are a fine reflection of why the woodturning community is so well known for its members willingness to share and help other turners.

It is most rewarding that we were able to capture our first full video of David's demonstration and will be adding it to our MCW library for member use.

Positive comments from several members at the last meeting indicates we are on the right track with the video capabilities and that the enhancement of our demonstrations is more than worth the effort and expense. As a result, I've been making further progress in improving our display capabilities.

With some additional donated and loaned equipment, I hope to have both the TV monitor and an LCD projector operational at the April meeting. We're hoping better monitoring and switching capabilities will be less disruptive for the demonstrator and audience and we're also hoping to add DVD recording capabilities... we'll see.

**Matt Neuman** from the Woodworkers Club was able to retrieve 2 projection screens that were headed for a dumpster and donate them to MCW. Someone also offered to donate an additional video camera I hope to receive at the next meeting. Within the next month or two, I should have the wiring/connection procedures written down and repeatable so we can start engaging the members that have volunteered to help operate the video capabilities.

I spoke with **Jevon Wolf** and **Matt Neuman** about supporting the Woodworkers Club with MCW demonstrations and we agreed on Saturday, September 11th for our first demonstration.

At the March meeting, there seemed to be a consensus that turning demonstrations would be the best place to start. I will work with **Jack Enders**, who volunteered to help with planning, logistics, and coordination with the Club. Mark your calendars for this date and plan to stop by and/or participate in the event. Additional details to follow.

I had a chance to attend the **PATINA** (Potomac Antique Tools & Industries Associations) **Spring Tool Sale & Auction** in Damascus on March 13th. While I found only a few turning chisels, there sure were all kinds of antique and usable woodworking hand tools available. If you are interested in hand woodworking tools, I would encourage you to attend one of their future events when it comes around again. You can find details about PATINA at their website:

[www.patinatools.org](http://www.patinatools.org)

Happy Turning!

## RAFFLE AT APRIL MEETING FOR DAVID ELLSWORTH BOWLS

David has generously donated the natural-edged bowls he created during his demonstration in March for a raffle at the April Meeting. Beech was used for both bowls and they have been signed by David.

MCW members attending the meeting may purchase a single raffle ticket for \$2.00 or 3 tickets for \$5.00. Only active members are eligible. A member can win only one bowl, so if the first winner's ticket is drawn a second time, another ticket will be drawn. Proceeds will go to the MCW treasury.

The bowls are unfinished, but this is a terrific opportunity to own a masterpiece! Many thanks to Gary Guenther for taking care of them while they dried.



## MEMBER NEWS

PHIL BROWN/MICHAEL BLAKE

❖ **ED KARCH**, some may have noticed, has not been to a meeting for some time now. As fate would have it, Ed's wife **Laquetta**, slipped off of a curb after one of our numerous snow events and broke both of her ankles. So Ed has been caring for her for several months now. Thankfully, she is on the mend, but still has several more weeks of recovery. It has been a long and difficult winter for the Karches. We all wish Laquetta the best and hope to see her and Ed at the meeting on May 6th.

❖ **CLIF POODRY** teaches the following classes at the Woodworkers Club in Rockville –  
**Introduction To The Lathe** on Saturday April 17th, May 8th, June 5th, and July 10th.  
**Beginning Bowl Turning** on Saturday April 24th, Sunday June 6th, and Sunday July 25th.  
**Advanced Bowl Turning** on Saturday & Sunday May 15th-16th, June 12th-13th  
 For more information see: [woodworkersclub.com/practice%20class1.htm](http://woodworkersclub.com/practice%20class1.htm)



❖ **MARK SUPIK's** April/June 2010 schedule for full-day Saturday & Sunday **Spindle Turning** and **Bowl Turning** classes at his commercial shop in Baltimore is now available here and on their website. The lathes and shop are a treat to see and use. The shop is at #1 North Haven Street in Baltimore, just a few blocks west from the Lombard Street exit off of I-895.

Class size is limited to 5, with each student on his/her own lathe. All classes include tool use, safety, techniques, and practice in the morning with a focus on projects in the afternoon. Lunch from DiPasquale's Market deli comes with the class. \$50 deposit required and refundable up to one week prior to class date. \$120 class fee is offered to MCW members (a 20% discount).

Saturday, April 17th – The Right Start

Sunday, April 18th – Bowl Turning Basics

Saturday, May 15th – The Right Start (fiber arts tools)

Sunday, May 16th – Bowl Turning Basics

Saturday, May 22nd – Bowl Turning Basics

Sunday, May 23rd – The Right Start (fiber arts tools)

Saturday, June 12th – The Right Start (fiber arts tools)

Sunday, June 13th – Next Step Spindles

Saturday, June 26th – The Right Start

Sunday, June 27th – Next Step Bowl Turning

Additional details at [marksupikco.com/School/schoolcurrent09-1.html](http://marksupikco.com/School/schoolcurrent09-1.html) Call 410/732-8414 to register.

**DON'T BE SHY – PROMOTE YOURSELF.** Let us know about your woodturning activities so they can be included in the newsletter each month. Send your information to **Bert Bleckwenn** at [bableck@gmail.com](mailto:bableck@gmail.com) or call 301/634-1600 OR to **Michael Blake** at [mb7298@comcast.net](mailto:mb7298@comcast.net) or call 301/589-1815.

## FINANCIAL REPORT

BOB BROWNING, TREASURER

ACCOUNT BALANCE 12/31/09.....	\$ 3,560.13
INCOME: \$460.00 [Demo Fees] \$240.00 [Member Dues] \$460.00 [Silent Auction] \$2.00 [Library], \$85.00 [Donation from David Ellsworth].....	\$ 758.00
EXPENSES: \$325.00 [Demonstrator Fee].....	(\$ 325.00)
CURRENT ACCOUNT BALANCE 03/31/10.....	\$ 3,993.13

## MEMBERSHIP REPORT

BILL AUTRY, MEMBERSHIP CHAIR

At the end of 2009, the membership roster stood at 66. As of **March 31, 2010**, 47 members have paid their renewal dues, 19 members have not renewed, and 2 new members have joined, bringing the membership roster to 49. **Anyone who intends to renew, but has not yet done so, please see me at the April meeting or mail your \$20 renewal check to me at – 9301 Ball Road • Ijamesville, MD 21754.**

## EXHIBIT NEWS

PHIL BROWN

### ► Potomac Public Library Exhibit – April 2010

With great help from Tim Aley and his son, Jacob, the Potomac Library exhibit is installed. All the work looks good in the case. The current brochure (in black and yellow paper) is there for pickup. The 11 members lending 36 pieces are Tim Aley, Phil Brown, Don Couchman, Eliot Feldman, David Fry, Stuart Glickman, Gary Guenther, David Jacobowitz, Gary Nickerson, Elliott Schantz, and Richard Webster.

MCW will also be exhibiting at the Davis Public Library in June and at the Quince Orchard Public Library in September. Details in future newsletters and/or on our Website.



## CALL FOR ENTRIES

PHIL BROWN

### ► A Lifetime Of Perspective – A Seniors' Art Exhibit at the Jewish Community Center

For artists in all fields age 65 and over, this annual exhibit will run from May 16th to June 6th. Call Kandy Hutman, 301/348-3864, for an appointment to show her up to 3 of your turned pieces. One will be selected for you to deliver on Tuesday, April 20th. Space will limit the number of pieces and artists exhibiting. There is no charge to enter and no commission taken on sales. The exhibit is made possible through the generous support of the Deena and Jerome Kaplan Family in memory of Deena's parents. The Jewish Community Center is at 6125 Montrose Road in Rockville.

### ► Design In Wood Exhibition 2010 – San Diego, California

Design in Wood is co-sponsored by the San Diego Fine Woodworkers Association and the San Diego County Fair. It is the largest juried woodworking exhibition of its type anywhere. The exhibition is open to all interested adult woodworkers. There are three classes for woodturners to enter pieces:

Class 14 Wood Turning – Center Work: Parallel to the ways of the lathe

Class 15 Wood Turning – Embellished/Mixed Media

Class 16 Wood Turning Laminated/Segmented

An entry form can be downloaded from [sdfwa.org/2010DIWEntryForm.pdf](http://sdfwa.org/2010DIWEntryForm.pdf). Online registration starts in mid-March and all entries must be submitted by 5:00 PM PST on Friday April 30th. Submission is by digital photographs with your entry form. See [sdfwa.org/diw/2009/photogallery.htm](http://sdfwa.org/diw/2009/photogallery.htm) for a photo gallery of last year's winners. I see no reason why MCW members could not easily hold our own with the turners from the left coast.

## AAW NEWS

BERT BLECKWENN

### ► Volunteers Needed For Auction At Hartford Symposium

At the auction this June at the symposium, we need help with spotters, runners, and checkout. The spotters should be animated and outgoing. The runners will carry pieces from the review tables to the video area and to the checkout area. The checkout people need to be aware of how to handle and wrap the art when the buyers check out. If you will be at the symposium and would like to help for the evening, please contact

John Hill, Auctioneer • 828/645-6633 • 828/712-6644 CELL • [Johnhill6@verizon.net](mailto:Johnhill6@verizon.net)

### ► Professional Outreach Program New E-Newsletter

The Professional Outreach Program now has a monthly e-newsletter. AAW members in local clubs who may benefit from this information are encouraged to join the POP and receive the e-mail monthly they can do so at this AAW website the link – [woodturner.org/community/members/signup.pl](http://woodturner.org/community/members/signup.pl) If you'd like to learn more about the POP and it's programs you go to this link – [woodturner.org/community/pop/](http://woodturner.org/community/pop/) Trent Bosch - POP Committee Chair

## MARCH MEETING MINUTES

TIM ALEY, SECRETARY

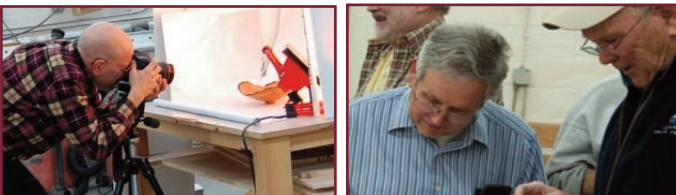
**BERT BLECKWENN** opened the meeting at 7:03. He welcomed a record crowd of 39 members and guests. Guests included Mark Aehle, Peter Lamb, Cheryl Kochman, Andy Hardigan, and Christina Verna.



Cliff Poodry set up the *Lending Library*. Contact him to borrow books or DVDs and please return items to the library at the next meeting.

The *Silent Auction* covered two tables with walnut, Spanish chestnut, holly, catalpa, mulberry, and cocobolo. Thanks to all who donated and purchased wood, proceeds benefits MCW.

Bill Autry collected dues. This was the last opportunity to pay your 2010 dues before your name will be dropped from the e-mail distribution list.



Michael Colella took the gallery photos of all 29 items brought for Show & Tell items from 16 members. Treasurer **Bob Browning** reported that MCW has \$3,560.13 in the bank as of 03/01/10.

The *Warriors-In-Transition Program* now meets once per month. The Forest Glen Craft Shop may be participating in on-site demos, but it is not clear now whether this will lead to MCW involvement.

**PATINA** [Potomac Antique Tool & Industries Association] will hold an Antique Tool Auction was on Saturday, March 13th, in Damascus. Several members commented on the quality of these auctions.

Phil Brown updated the status of the Renwick Turning Demonstration and collected pieces for the Potomac Public Library Display.

Gary Guenther reminded everyone of the MCW visit to the home of Jeff Bernstein & Judy Chernoff to view their contemporary wood art collection on Saturday April 10th at 1:00 PM.

Bert updated the status of the Video Monitoring Project for our monthly demonstrations. We have a television and stand kept at the Woodworkers Club. MCW has purchased a tripod, a 3-camera switching unit, parts for small boom, and a camera stand. We are still using borrowed cameras, but cameras have been ordered. The demonstration at this meeting will be our initial "dry run".

Bert solicited comments regarding the support of the Woodworker's Club with MCW demonstrations and workshops. Suggestions included, conduct weekend turning demonstrations, co-sponsor Woodcraft's Turn for the Troops by manning lathes on Memorial Day, Veteran's Day or another designated day, and conduct skill enhancement mini-workshops. Jack Enders volunteered to assist Bert with developing a specific Woodworker's Club demonstration day in concert with Jevon Wolf, shop manager.

The Woodworker's Club is looking for additional employees. Prospective employees must be available for at least 21 hours per week and must have weekend availability. They would like to hire someone that is willing and able to also teach classes. Benefits of employment include full access to the shop and select discounts in the retail store. Ask for Jevon Wolf or Matt Nauman for details.

Bert, Phil Brown and Bob Browning spoke about doing the initial work to apply for Internal Revenue non-profit status. A brief discussion followed. They are contacting other clubs and will keep members updated.

Gary Guenther introduced the evening's demonstrator David Ellsworth. David took an enlightening tour around the *Show & Tell* table, commenting and critiquing most of the items on the table and then began his demonstration.

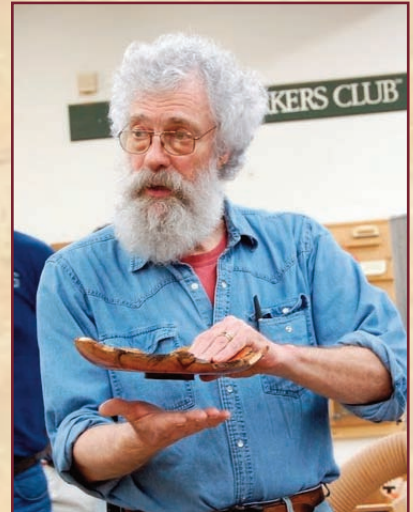


## MARCH SHOW & TELL

MICHAEL BLAKE



**RICHARD WEBSTER** 12" x 9½" PLATTER [MANZANITA BURL]



**TIM ALEY** 11" x 9½" HEART-SHAPED BOWL [CHERRY]

**STUART GLICKMAN**  
7½" x 5" BOWL [RED CEDAR]



**DON COUCHMAN**  
8" x 5" BOWL [WALNUT]

## MARCH SHOW & TELL

MICHAEL BLAKE

### JONATHAN GREENBURG TWO LAMINATED BOWLS [LAMINATED VENEER LUMBER]



TOP – LAMINATED HORIZONTALLY – 11½" x 4"  
BOTTOM – LAMINATED VERTICALLY – 10" x 4"

### DON VAN RYK TWO MUSHROOM BUD VASES 4" x 6" [HOLLY & WALNUT]



## MARCH SHOW & TELL

MICHAEL BLAKE

MIKE TWENTY LIDDED HOLLOW VESSEL, PEPPERMILL, PLATTER & PENS



4<sup>3</sup>/<sub>4</sub>" x 9<sup>3</sup>/<sub>4</sub>"  
[AMBROSIA MAPLE]



2<sup>1</sup>/<sub>2</sub>" x 10" [BUCKEYE BURL]



13<sup>1</sup>/<sub>2</sub>" x 1<sup>3</sup>/<sub>4</sub>" [CHERRY]



50-CALIBER CARTRIDGE PEN  
TWO 30-CALIBER CARTRIDGE PENS



## MARCH SHOW & TELL

MICHAEL BLAKE

### TERRY LAMB CHRISTMAS ORNAMENTS



1<sup>3</sup>/<sub>4</sub>" x 6"  
MAPLE, REDHEART



[LEFT TO RIGHT]  
2<sup>3</sup>/<sub>8</sub>" x 8" MAPLE [CENTER STAINED]  
1<sup>3</sup>/<sub>4</sub>" x 5<sup>1</sup>/<sub>2</sub>" MAPLE, MAPLE BURL  
1<sup>3</sup>/<sub>4</sub>" x 5<sup>1</sup>/<sub>2</sub>" IPE, MAPLE [BLEACHED]



### CLIF POODRY MINIATURE BOXES WITH FINIAL LIDS

THE BOX SECOND-FROM-LEFT IS MADE FROM BOCOTE. THE BOX SECOND-FROM-RIGHT IS MADE FROM MAPLE WITH WALNUT TRIM. THE REMAINDER ARE MADE FROM ORANGE OSAGE.

THE BOCOTE BOX WAS MADE AT A CINCY DROZDA WORKSHOP. THE OTHERS SHOW CLIF'S CONSCIOUS EFFORT TO FIND A HIS OWN STYLE, NOT SIMPLY KNOCKOFF CINDY'S WELL KNOWN STYLE.

WHEN CLIF'S FEBRUARY DEMO IS RE-SCHEDULED, HE WILL SHOW AND DISCUSS THESE AND OTHER MINIATURE BOXES WITH A VARIETY OF DRAMATIC FINIAL LIDS.

## MARCH SHOW & TELL

MICHAEL BLAKE

### ELIOT FELDMAN HOLLOW VESSELS



ABOVE, LEFT  
11" x 4"  
[CHERRY]

LEFT  
6" x 4½"  
[CHERRY]

BELOW, LEFT  
8½" x 4½"  
[SPALTED MAPLE]

BELOW, RIGHT  
11½" x 2½"  
[SPALTED MAPLE]



## MARCH SHOW & TELL

MICHAEL BLAKE

### ELIOTT SCHANTZ



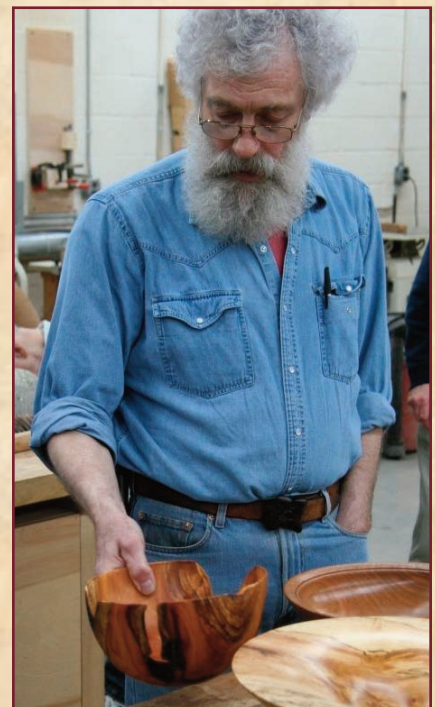
TOP-TO-BOTTOM

13" x 2" PLATTER [RED OAK]

10" x 6<sup>7</sup>/<sub>8</sub>" NATURAL-EDGE BOWL [MAHOGANY]

9<sup>1</sup>/<sub>2</sub>" x 4<sup>1</sup>/<sub>2</sub>" BOWL [WALNUT, PARTIAL FINISH]

7" x 2<sup>1</sup>/<sub>2</sub>" BOWL [CEDAR]



## MARCH SHOW & TELL

MICHAEL BLAKE

**BILL NEUDORFER** 13" x 4" BOWL — 2<sup>1</sup>/<sub>4</sub>" x 4<sup>1</sup>/<sub>2</sub>" GOBLET [CHERRY]



**GARY GUENTHER**  
6" x 4<sup>3</sup>/<sub>4</sub>" CHALICE  
[SPALTED BIRCH]



**MARCH SHOW & TELL**

**MICHAEL BLAKE**



**STAN WELLBORN  
INSCRIBED BOWLS**

ABOVE, DETAIL RIGHT  
10" x 4" [SYCAMORE]

BELOW  
14" x 5" [CHERRY]



## MARCH SHOW & TELL

MICHAEL BLAKE



### PHIL BROWN

LEFT

6<sup>3</sup>/<sub>8</sub>" x 6<sup>5</sup>/<sub>8</sub>"  
[RED CEDAR]

BELOW

15" x 6<sup>3</sup>/<sub>8</sub>"  
THICK-WALLED  
FLARE BOWL  
"VORTEX"  
[SPALTED MAPLE]



— PHOTOGRAPHS IN THIS SECTION BY —  
TIM ALEY, MICHAEL COLELLA, STUART GLICKMAN & GARY GUENTHER

## MARCH DEMONSTRATION

MICHAEL BLAKE/GARY GUENTHER

### DAVID ELLSWORTH SHARES HIS TECHNIQUES & SECRETS TURNING TWO NATURAL-EDGE BOWLS

**A**FTER sharing his thoughts and advice about most of the items from the *Show & Tell* table, David began his demonstration with an oblong section of Beech. [1]

Mounting the wood between centers, he used a very sophisticated depth gage (a Bic ballpoint pen) lined up with the headstock, then slowly rotated the log to judge the alignment. [2] Though not visible here, he had cut out a section of bark on the headstock side to ensure a strong bite for his spur center.

Our audio/visual team leader captured the view from the tailstock side of the lathe as David began turning the contour of the outside of his bowl. [3] This additional aspect allowed the audience to easily view the action from the front and from one side and not have to move around to see David's bowl take shape. [4]

Using his signature bowl gouge – designed by David and made by Crown – he showed and explained how the swept back top edges of the gouge can be used very effectively and safely, without the danger of catching. [5/6]

Depending on how the flute of the gouge is “presented” to the wood, efficient roughing cuts can be achieved for fast removal of wood and rough shaping. As the bowl began to take shape [7], the flared wings were clearly visible in the “ghost” shadows as the piece spun. When asked about lathe speed, David surprised us a bit by saying he very rarely exceeds 1,000RPM.

As David continued his rough shaping, this dramatic long shot tells a lot... shavings were flying off the lathe and the bowl's shape became pronounced as David cradled the gouge handle on his hip and guided his cuts by moving his body, not just his hands, to the left. [8]

With the basic outside contour to his liking, David began to shape the tenon he will need for mounting the piece in a scroll chuck. [9] Here, he also defined the contour that will eventually guide his eye and his cuts to achieve the final shape of the bowl and the foot... a step many do not get to until the bowl had been reversed and mounted in a scroll chuck. [10]



1



2



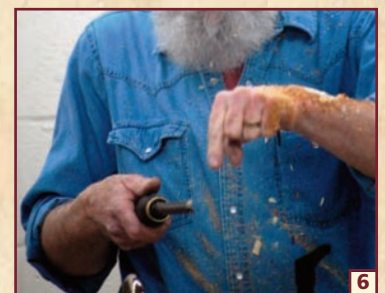
3



4



5



6



7



8



9



10

## MARCH DEMONSTRATION

MICHAEL BLAKE/GARY GUENTHER

With the piece now removed from between centers, reversed, and mounted in a scroll chuck [11], David turned his attention to hollowing out the inside of the bowl. Before getting to the cutting, David pointed out the advantages of pre-shaping the outside contour before reversing the piece to this position. [12]

Once again illustrating the versatility of his signature gouge, David explained how to position the flute to make slicing cuts once enough of the waste wood had been roughed out. He also emphasized the importance of keeping the left hand on top of the blade throughout the hollowing process. [13]

Beginning with the gouge handle extend far to the right [14], David illustrated how important it is to make smooth, but determined cuts as you move the handle to the left, once again anchoring the handle to the body as you progress. [15/16]

When the bulk of the waste was removed, David shifted emphasis, following the outside contour he had established, to carefully turn the walls of the bowl to the thickness he wanted. [17]

While it may seem obvious that this process is the logical next step, watching David make it happen – using his senses of sight, touch, and hearing to inform him where he was and where he needed to go is quite a treat to behold. Cliche it may be, but he makes it appear so simple. [18]

(It may be worthwhile at this point to remind everyone that David was turning a considerable amount of “air” as well as wood, adding to the degree of difficulty.)

Two significant tips David pointed out at this stage was how vital it is to keep your left hand behind the tool rest at all times and not wrap your fingers around the tool shaft as you progress. A light, downward pressure to keep the blade in contact with the tool rest is all you need. [19]

Again, you can clearly see here the "winged" shape of this piece as David carefully smooth cut the bottom of the bowl. [20]

The long, swept back profile of David's gouge lets him slice, not scrape, the interior sides to an unusually smooth finish. The need for sanding is reduced significantly, but it should be done now so you will not have to go back to it later. ↓





## MARCH DEMONSTRATION

MICHAEL BLAKE/GARY GUENTHER

Once satisfied with the inside, David removed the bowl from the scroll chuck. He used a jam chuck of his own design to complete the bowl. The chuck is made from a piece of walnut and is drilled and tapped with different sizes to fit the most common headstock configurations. [21]

With a thick piece of foam pad to protect the interior and using the original indentation from the spur center, re-aligning the pieces seemed to be extremely easy. [22] (David followed the same process for the second bowl he turned and re-alignment with the jam chuck, the foam pad, and the original spur center hole appeared to just as easy the second time. SEE NEXT PAGE.)

Next, David turned his attention to removing the remaining waste wood, completing the outer contour, and creating a stable foot. [23]

At this point in the demonstration, it became crystal clear how truly significant it is to take the step of establishing the contour of the entire bowl as shown in Photos 10 & 12. [24]

The excess wood is easily removed, again using David's signature gouge. [25/26]

When he gets down to the small area shown here [24], David switches to a short, 3/8" gouge and turns the tool rest under the tiny nub he's created. He cuts a slight concave section inside the foot section and then turns off the nub. [27]

After David removed the bowl from the jam chuck, you can see the tiny nub left on the tail center, perfectly outlined by the green diamond part of the label on the fire extinguisher in the background. [28] Terrific shot!

Again using an extremely high-tech piece of equipment, David "measured" the walls and foot for consistent thickness. [29]

Pronouncing the thickness of the entire piece to be to his liking, "TA DAH" — A BOWL! [30]

WITH THIS BOWL DONE, AND AS PROMISED, DAVID MOUNTED ANOTHER PIECE OF BEECH AND TURNED THE NEXT BOWL AT WHAT HE REFERRED TO AS "PRODUCTION SPEED", WITHOUT PAUSING TO EXPLAIN EVERY STEP.

THE NEXT TWO PAGES COVER THAT PROCESS.



PHOTOGRAPHS IN THIS SECTION BY TIM ALEY, MICHAEL COLELLA, STUART GLICKMAN, AND GARY GUENTHER.

## MARCH DEMONSTRATION

MICHAEL BLAKE

### ELLSWORTH "PRODUCTION SPEED" BOWL



BLOCK MOUNTED BETWEEN CENTERS.



ADJUSTED FOR BETTER RESULT.



READY TO START OUTSIDE PROFILE.



ROUGH SHAPING... CURLS START TO FLY



SHAPE STARTS TO DEVELOP.



SHAVINGS PILE UP AND PILE UP...



... AND PILE UP EVEN MORE.



TENON FOR SCROLL CHUCK IS CUT.



REVERSED WITH TENON IN CHUCK.



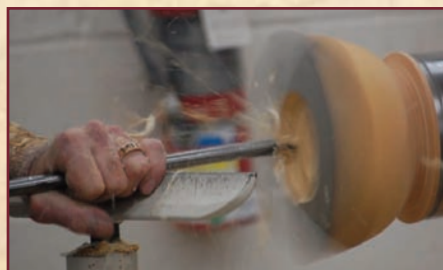
SHEER SCRAPING FINISHING CUT.



BACKWARDS SLICING CUT SHAPES FORM.



SHOP-MADE SHEER SCRAPER USED...



...TO BEGIN HOLLOWING INSIDE.



ELLSWORTH GOUGE TAKES OVER...



...AND CHIPS START TO FLY AGAIN.

## MARCH DEMONSTRATION

MICHAEL BLAKE



FINISHING CUTS TO COMPLETE INTERIOR ...TURN INSIDE TO MATCH OUTSIDE.



MOUNTED ON JAM CHUCK, TENON...



...IS CUT DOWN TO CREATE FOOT...



...UNTIL ONLY A TINY NIB IS LEFT.



RECESS CUT IN FOOT & NIB REMOVED...



... AND "TA DAH" — ANOTHER EXQUISITE BOWL IN ABOUT 15 MINUTES!

## OPEN LETTER FROM AAW

KURT HERTZOG

Dear Montgomery County Woodturners,

If you are not currently an AAW member, I'd like to take a few moments of your time to inform you about the benefits of membership.

There are many individual benefits of being an AAW member. One of the premier benefits is the *American Woodturner* publication. Recently, the AAW put the entire archive of the *American Woodturner* on our website. This vast resource is available to the membership at will. We'd like to have you experience this benefit. We have a temporary page for non-members to use to enjoy this new member benefit.

[woodturner.org/products/aw/WholeIssues/index.htm](http://woodturner.org/products/aw/WholeIssues/index.htm)

There is now an "electronic" version of AAW membership. Since the entire archive and future editions of *American Woodturner* will be present on the website, new members can opt for a membership without the hardcopy journal being mailed to them. You can find the membership opportunities at:

[woodturner.org/Member/MemberSignup.asp](http://woodturner.org/Member/MemberSignup.asp).

If you are interested in this green effort, select the "online" membership option for \$38.

Another new benefit of membership is the periodic drawings. Currently, there is a monthly drawing from the membership for a group of very exciting prizes. These drawings will continue all year and are planned for the future as well. We also have a year end Grand prize drawing for a Powermatic lathe. You can see the details on these drawings at:

[woodturner.org/org/mbrship/drawings.htm](http://woodturner.org/org/mbrship/drawings.htm)

I think you'll agree that there are even more benefits to being an AAW member. Recently we have added vendor discount program. We want to help get our 13,600 + members in touch with vendors who support our non-profit organization, by encouraging vendors to offer our membership exclusive discounts and other incentives to buy the products they offer. If you have any questions, please feel free to contact me or ask your local chapter contact. We'll be glad to answer any questions you may have.

There are many other benefits to membership listed here. Please take a look at the comprehensive list of the benefits of membership.

**BENEFITS OF AAW MEMBERSHIP**

- Six issues annually of *American Woodturner*.

- Marketing opportunities on our website for artists, collectors, galleries and museums
- Group rates for health, life and commercial business insurance. (U.S. members only)
- Covered by the AAW provided local chapter liability insurance. To be covered for bodily injury insurance for chapter demonstrations or events.
- Merchandise discounts at many suppliers, and savings of up to 50% on AAW merchandise, including project books, DVDs, logo apparel, and more.
- Access to Educational Opportunity Grants.
- AAW Forum and member-only access to articles and resources at [woodturner.org](http://woodturner.org)
- Ability to vote in AAW board elections if a member prior to the end of August.
- Eligible to apply to be a member of the Professional Outreach Program (POP).
- Exhibit opportunities.
- Annual International Woodturning Symposium.
- Access to apply for demonstration opportunities at AAW Symposiums
- AAW Resource Directory with a complete listing of contact information of members, Local Chapters, demonstrators, and woodturning resources. [Updates are available to members on our website. A printed directory is published biennially.]
- Local AAW Chapters. Over 325 local chapters offer workshops, camaraderie, opportunities to share ideas and techniques, access to lending libraries, product discounts, and volume purchases.
- Access to all past issues of *American Woodturner* through the Members Only Area
- Access to machine-readable *American Woodturner* issues for those members who are visually impaired, and use computer screen reading software - contact the webmaster if this applies to you.

Thanks,

KURT kurth@woodturner.org

---

**FUTURE DEMONSTRATIONS/EVENTS****GARY GUENTHER**

---

**▶ April 10th – Saturday at 1:00PM *The Bernstein/Chernoff Collection of Contemporary Wood Art.***

We are privileged to be invited into Jeff's and Judy's home in Laurel to see the cutting edge in woodturning and wood art in this collection specializing in items made in the last five years. There are, of course, also some older works by the acknowledged masters. Jeff is the President of the Collectors of Wood Art organization. This is a unique opportunity to see a premier, private collection of contemporary wood art, and more. Small desserts and drinks will be served. Spouses welcome. Photographs for personal use only will be permitted.

**NOTE FROM PHIL BROWN.** I had the opportunity to see this collection at a CWA function and it is OUTSTANDING!! There are attractive and simple forms, but also wonderful complex pieces, sculptural work, texturing, dying, negative spaces, miniature to large – all of the best available today from creative turners and artists. While mostly wood items, there are also very fine bamboo baskets, wire sculpture, glass, and clay. This collection is much more exciting than you will ever see in a museum.

**Directions to 10388 Derby Drive, Laurel, MD 20723**

From northbound Route 29 (Colesville Road), turn east at the Johns Hopkins Road exit onto Gorman Road (Johns Hopkins Road becomes Gorman road when going east). Go approximately three-quarters of a mile to Derby Drive, TURN LEFT. The house is about three-quarters of a mile on the right side.

OR

From northbound I-95, turn west onto Route 216 (Scaggsville Road). Travel 1.5 miles to Leishear Road, TURN RIGHT. Travel 0.8 miles to the "T", TURN RIGHT onto Gorman Road, and immediate LEFT TURN onto Derby Drive. The house is about three-quarters of a mile on the right side.

---

**▶ May 6th – Return visit to Jerry & Deena Kaplan's home and their exceptional craft art collection.**

We are once again invited to visit Jerry & Deena Kaplan's home on Goldsboro Road in Bethesda to view their extensive American Craft Art collections, which includes many wonderful turned-wood pieces as well as furniture, sculpture, pottery, and much more. (You can check out Jerry's beautiful Poolewood lathe in the work room.) We were here two years ago ([picasaweb.google.com/montgomerycountywoodturners/MCWMay08Meeting#](http://picasaweb.google.com/montgomerycountywoodturners/MCWMay08Meeting#)), but we have many new members since then, and not everyone was able to attend, so we have been kindly asked to come back. Frankly, there is too much here to appreciate in just one visit, so second visit is most welcome. The Kaplan's are very supportive of the arts. Jerry is a member of the VisArts board, and their art collection has been featured in *Home & Design* magazine. Besides looking on your own, Jerry and Deena will lead guided tours.

**IMPORTANT NOTE: This visit will substitute for our May meeting, at the usual 7:00PM starting time.** Bert will begin with Announcements. Because of somewhat limited parking spaces around their house, it may be worthwhile to arrange for several people to travel in one car. A map and directions will be furnished next month. Light refreshments will be served. Spouses welcome. Photography is permitted.

---

**▶ June 10th – CAW's Tom Boley will show how he turns his natural-edge "barking bowls".**

Tom recently started his own professional turning shop in Northern Virginia and is the first President of the one-year-old Catocin Area Turners in Leesburg. He will be demonstrate one of his favorite forms.

---

**▶ July 8th – Warren Carpenter – A return engagement.**

We had such a good time with Warren last November, he is coming back and show us more. The focus of his demonstration is yet to be determined.

---

**▶ September 9th – Mark Sfirri – An Acknowledged Master of Multi-Axis Turning.**

It is difficult to decide what two forms to ask Mark to turn – from his amazing repertoire of bats, candlesticks, figures, curved handles, and more. Mark will be in DC in April to receive a Distinguished Educator award from the James Renwick Alliance, and we are very pleased he will be able to come back to join us in September.

---

## MCW MEETING SCHEDULE – 2010

Meetings are held on the Thursday before the second Saturday each month, from 7:00 PM–9:00 PM, at the Woodworkers Club in Rockville, Maryland. See our website for a map to the meeting site.

<b>2010 MEETING DATES</b>	<b>JAN 7</b>	<b>FEB 11</b>	<b>MAR 11</b>	<b>APR 8</b>	<b>MAY 6</b>	<b>JUN 10</b>
	<b>JUL 8</b>	<b>AUG 12</b>	<b>SEP 9</b>	<b>OCT 7</b>	<b>NOV 11</b>	<b>DEC 9</b>

## MCW'S TURNING JOURNAL

A monthly publication of Montgomery County Woodturners – A Chapter of the American Association of Woodturners.  
Editor: Michael Blake – Phone: 301/589-1815 – Email: mb7298@comcast.net  
THE MCW WEBSITE IS <http://montgomerycountywoodturners.org>

## MCW CONTACT INFORMATION

### OFFICERS

President	Bert Bleckwenn	bableck@gmail.com	301/634-1600
Vice President	Clif Poodry	cpoodry@aol.com	301/530-4501
Program Chair	Gary Guenther	gary.guenther@att.net	301/384-7594
Membership	Bill Autry	bill_autry2004@yahoo.com	301/524-7198
Secretary	Tim Aley	taley16922@aol.com	301/869-6983
Treasurer	Bob Browning	suznbob@verizon.net	301/774-0305
Webmaster	Carl Powell	cmpowell@gmail.com	301/924-6623
Newsletter Editor	Michael Blake	mb7298@comcast.net	301/589-1815

### VOLUNTEERS

Web Albums.....	Carl Powell, Gary Guenther	S&T Recording.....	Richard Webster
Mentor Program.....	Donald Couchman	Gallery Photography.....	Hal Burdette
Group Buys.....	Stan Wellborn	Photography Assistant.....	Donald Van Ryk
Lending Library.....	Clif Poodry	Candid Photography.....	Tim Aley
Wood Identification.....	Ed Karch	Candid Photography.....	Stuart Glickman
Exhibit Committee.....	Phil Brown, Hal Burdette, Clif Poodry	Candid Photography.....	Gary Guenther

## MEMBER DISCOUNT PROGRAMS

**STAN WELLBORN**

### HARDWOODS, INC. • FREDERICK, MARYLAND – [hardwoodsincorporated.com](http://hardwoodsincorporated.com)

10% off all turning stock, lumber, moldings, finishes and hardware. 10% off on all Amana router bits and blades that list for \$75.00 and under and 20% off those that list for over \$75.00. 5% off all plywood and veneer products.



### ROCKVILLE WOODWORKERS CLUB – [woodworkersclub.com](http://woodworkersclub.com)

MCW and other club members, remember to support the Woodworkers Club by purchasing turning supplies during our meetings and save 10% on the retail price.



### 2SAND.COM – [2sand.com](http://2sand.com) or call 800/516-7621

2Sand.com is a coated abrasive specialist focused on fast service and fair prices providing superior sanding discs, sandpaper sheets, and woodturning tools to woodshops. MCW Member Discount is 10% (discount code available in the restricted area of the MCW Website).



### CRAFT SUPPLIES USA – [woodturnerscatalog.com](http://woodturnerscatalog.com)

Club members can save 10% on all finishes & disc abrasives from Craft Supplies USA. Just mention your club name and save, all year long. You can always see current club specials by clicking on the members login button on their homepage. New 15% specials are updated on the 1st of the month, which can be accessed by using on the link above and going to the club member login located on the lower right portion of the page.



### HARTVILLE TOOL CLUB – [hartvilletool.com](http://hartvilletool.com)

Members get a 15% discount, with MCW receiving a 3% rebate. If you have not signed up for this program, let Stan Wellborn know you want to do so. He will let Hartville know you are an MCW member and sign you up. Catalogs and ordering instructions are available or at meetings.

