

## IN THIS MONTH'S ISSUE

April Meeting Minutes.....	2
Member News.....	3
Financial Report.....	3
Membership Report.....	3
Exhibit News.....	4
Items For Sale.....	4
AAW News.....	4
President's Perspective.....	5
April Show & Tell.....	6-11
April Demonstration.....	12-15
AAW Open Letter.....	16
Future Demonstrations/Events.....	17
Future Meetings, Contact and Discount Information.....	18



## NEXT MEETING ANNOUNCEMENT

### MAY 2010 MONTGOMERY COUNTY WOODTURNERS MEETING...

**DATE** Thursday – May 6, 2010

**TIME** 6:45 PM – 9:00 PM

**LOCATION** Jerry & Deena Kaplan's  
5420 Goldsboro Road • Bethesda, Maryland  
301/229-4181

**AGENDA** 7:00-7:15 — A brief business meeting.  
*No Show & Tell or Silent Auction.*

7:15-9:00 — There will be no structured Program for this month's meeting. Jerry will provide a guided tour and on you can tour on your own. Refreshments will be served. Spouses are welcome. Photography is permitted for personal use only.

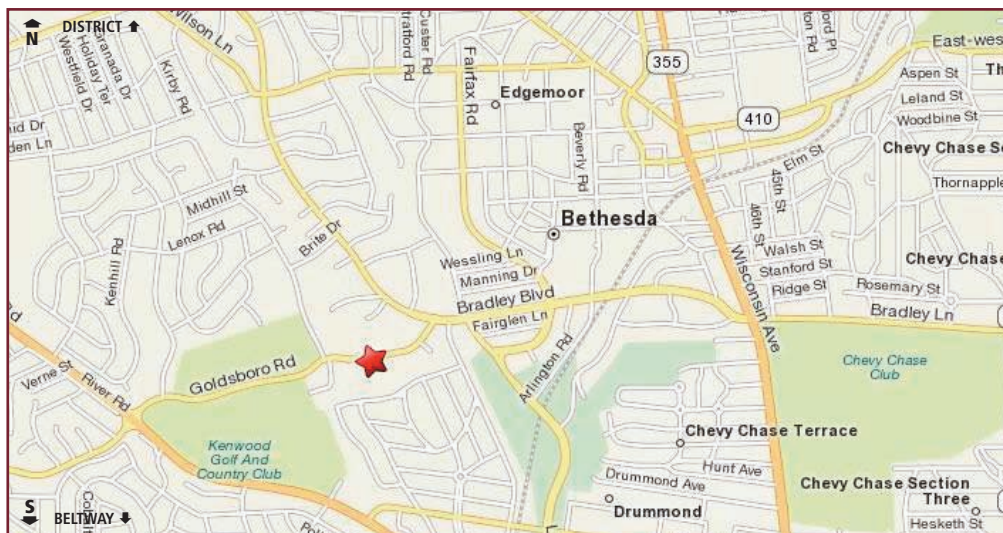


### A RETURN VISIT TO THE HOME OF JERRY & DEENA KAPLAN AND THEIR EXCEPTIONAL CRAFT ART COLLECTION.

**T**HE Kaplan's home is inside the Beltway, on the south side of Goldsboro Road between River Road and Bradley Boulevard, just east of the intersection with Radnor Road. The house is not visible from the street, but there is a post at the end of the driveway with the address visible.

Because of limited parking spaces around their house, it may be worthwhile to arrange for some carpooling. There is no street parking on Goldsboro, so pull up in the driveway toward the front door or to the garage on the left side of the house. Park as close as possible to get as many cars as possible in the drive. You will also find side-street parking just a short walk north on Radnor Road. If you have any problems, call Jerry at 301/229-4181 for help.

**TWO IMPORTANT NOTES:** Deena is allergic to strong odors, so everyone is asked to avoid wearing perfumes or colognes. Because of the delicate nature of much of the artwork, please do not bring large handbags, camera bags, etc.





## APRIL MEETING MINUTES

TIM ALEY, SECRETARY

**BERT BLECKWENN** opened the meeting at 7:04 to 32 members and guests, including Evan Enders, Jack Enders' grandson and 2 new members, Robert Brulotte and Richard Sherman.



EVAN ENDERS  
[THE GUY WITH THE  
BIG GRIN MUST BE  
THE GRANDFATHER]



ROBERT BRULOTTE



RICHARD SHERMAN

The *Show & Tell* table was filled with bowls, lidded boxes, tree ornaments, a mandrel, and an egg shaped jewelry box. Items were photographed by Hal Burdette, Don Van Ryk kept everything in order, and Richard Webster helped with documentation.



The *Lending Library* is on the honor system for check out and check in. If you've had a video checked out for more than a month, please return it so other members can enjoy it.

The *Silent Auction* table had 4 dogwood blanks brought in by Phil Brown from Pat McLaughlin and a cedar log donated by Richard Webster.

Any 2009 member who has not paid their 2010 dues will have to be dropped from the e-mail distribution list.

Please pay dues to Bill Autry. As of March 31st, our checking account balance is \$3,893.13.

There were over 110 tickets sold for the Raffle for the two Ellsworth bowls created in the March meeting. The winner of the first turned bowl was Elliot Schantz and new member Richard Sherman won the second bowl. The tickets were drawn by Evan Enders. He got a pen made by former member Jerry Mauch for his efforts.

Bert reported on the *Warriors In Transition Program*. There were 6 warriors on Tuesday turning pens, key chains, bottle stoppers and a miniature bat and Chris Wright had an additional 3-4 involved in woodworking activities at the same time. The Forest Glen Craft Shop is planning an on-site demo as part of an August outreach day and MCW may be able to help.

Members were reminded of the Saturday visit to the home of Jeff Bernstein & Judy Chernoff to view their contemporary wood art collections.

Phil Brown reported we are receiving large number of complementary e-mails from various patrons for our current display at the Potomac Library.

Bert updated the status of the Video Monitoring Project. A TV and LCD projector were operational at the meeting along with DVD recorder. The projector screen donated by Matt Neuman from the Club was used. They are working out DVD format issues and still are using borrowed cameras hoping to order the new ones soon. Stan Wellborn offered a camcorder.

Bert gave a report on Woodworker's Club Support project. We want to support the Club in return for the their continuing support of our club. The plan is for an MCW Demonstration Day on Saturday, September 11th or October 16th. The initial plan is for three inside and two outside lathe demos. Several displays are planned including an MCW Turnings Display, MCW & AAW Promotional Display, and a Woodworkers Club Display depicting what the store has to offer.

Gary Guenther introduced Patrick O'Brien to critique *Show & Tell* items before his demonstration of small natural-edge bowls from a branch. Patrick provided compliments and constructive criticism for all of the pieces.



## MEMBER NEWS

PHIL BROWN/MICHAEL BLAKE

❖ **STUART GLICKMAN** and **PHIL BROWN** have pieces in the 12th annual *A Lifetime of Perspective: Art by Older Adults* at the Jewish Community Center Goldman Gallery, 6125 Montrose Road in Rockville, May 16 through June 6, 2010. There may be other members with work in this exhibit.

❖ **PHIL BROWN** will not be in town for the June 10th meeting and would like someone to bring the box of brochures, hand outs, name badge forms and Silent Auction forms to the meeting, place them on benches and pick up extras at the end of the meeting. Please call Phil at 301/767-9863 if you are willing to handle this for the June meeting.

❖ **CLIF POODRY** teaches the following classes at the Woodworkers Club in Rockville –  
Introduction To The Lathe on Saturday May 8th, June 5th, and July 10th.  
Beginning Bowl Turning on Sunday June 6th, and Sunday July 25th.  
Advanced Bowl Turning on Saturday & Sunday May 15th-16th, June 12th-13th  
For more information see: [woodworkersclub.com/practice%20class1.htm](http://woodworkersclub.com/practice%20class1.htm)



CLIF POODRY

❖ **MARK SUPIK's** May/June 2010 schedule for full-day Saturday & Sunday Spindle Turning and Bowl Turning classes at his commercial shop in Baltimore is now available here and on their website. The lathes and shop are a treat to see and use. The shop is at #1 North Haven Street in Baltimore, just a few blocks west from the Lombard Street exit off of I-895.

Class size is limited to 5, with each student on his/her own lathe. All classes include tool use, safety, techniques, and practice in the morning with a focus on projects in the afternoon. Lunch from DiPasquale's Market deli comes with the class. \$50 deposit required and refundable up to one week prior to class date. \$120 class fee is offered to MCW members (a 20% discount).

Saturday, May 15th – The Right Start (fiber arts tools)  
Saturday, May 22nd – Bowl Turning Basics  
Saturday, June 12th – The Right Start (fiber arts tools)  
Saturday, June 26th – The Right Start

Sunday, May 16th – Bowl Turning Basics  
Sunday, May 23rd – The Right Start (fiber arts tools)  
Sunday, June 13th – Next Step Spindles  
Sunday, June 27th – Next Step Bowl Turning

Additional details at [marksupikco.com/School/schoolcurrent09-1.html](http://marksupikco.com/School/schoolcurrent09-1.html) Call 410/732-8414 to register.

**DON'T BE SHY – PROMOTE YOURSELF.** Let us know about your woodturning activities so they can be included in the newsletter each month. Send your information to Bert Bleckwenn at [bableck@gmail.com](mailto:bableck@gmail.com) or call 301/634-1600 OR to Michael Blake at [mb7298@comcast.net](mailto:mb7298@comcast.net) or call 301/589-1815.

## FINANCIAL REPORT

BOB BROWNING, TREASURER

ACCOUNT BALANCE 03/31/09.....	\$ 3,893.13
INCOME: \$250. <sup>00</sup> [Member Dues] \$20. <sup>00</sup> [Silent Auction] \$7. <sup>00</sup> [Library], \$189. <sup>00</sup> [Tickets sales for Ellsworth bowl raffle].....	\$ 466.00
EXPENSES: \$50. <sup>00</sup> [Demonstrator Honorarium] \$453. <sup>74</sup> [Video equipment, Club expenses].....	(\$ 503.74)
CURRENT ACCOUNT BALANCE 04/30/10.....	\$ 3,855.39

## MEMBERSHIP REPORT

BILL AUTRY, MEMBERSHIP CHAIR

As of April 30, 2010, the active membership roster stands at 55. That number includes **Mike Twenty**, **Gary Nickerson**, and **Morad Burgal**, who joined at the January meeting... and **Robert Brulotte**, **Richard Sherman**, and **Andrew Hartigan**, who joined in April. **Welcome to MCW one and all!**



## EXHIBIT NEWS

PHIL BROWN

### ◆ Davis Public Library Exhibit – June 2010

We will exhibit members work at the Davis Library on Democracy Boulevard in June. Pieces displayed in the Potomac Library in April will again be used at Davis from those members willing to again lend their work. Additional pieces fitting on a 7 inch wide shelf are needed. Please bring your work for pickup by Phil at the Kaplan Home on May 6th. All pieces will be returned to you at our July 8th meeting, or if you are not there at a future meeting, or by arrangement with Phil.

## ITEMS FOR SALE

MICHAEL BLAKE

### ◆ SEARS CRAFTSMAN 10-INCH TABLE SAW

25 year-old (1985) with electronic controls, 1 HP motor, enclosed mobile base with 4-inch dust collection port, mitre gauge, rip fence, two Freud LU85M carbide-tipped blades, panel-cutting jig, two zero-clearance inserts, and owners manual.

**PRICE – \$250.00**

Contact Bert Bleckwenn at 301/634-1600 or [bableck@gmail.com](mailto:bableck@gmail.com)



### ◆ POWERMATIC 12-INCH LATHE, MODEL 45

Overall condition excellent – 12" swing – 3/4 Horsepower 115v – 4-speed belt drive – fixed head stock – inside and outside turning w/3 inside & 1 outside mounting plates – 12" and 6" tool rests – 1 Nova chuck.

**PRICE – \$450.00**

Contact Terry Lamb at 301/530-0278 or [trlambsr@verizon.net](mailto:trlambsr@verizon.net)



## AAW NEWS

BERT BLECKWENN

### ◆ Volunteers Needed For Auction At Hartford Symposium

At the auction this June at the symposium, we need help with spotters, runners, and checkout. The spotters should be animated and outgoing. The runners will carry pieces from the review tables to the video area and to the checkout area. The checkout people need to be aware of how to handle and wrap the art when the buyers check out. If you will be at the symposium and would like to help for the evening, please contact

John Hill, Auctioneer • 828/645-6633 • 828/712-6644 CELL • [Johnhill6@verizon.net](mailto:Johnhill6@verizon.net)

### ◆ Professional Outreach Program New E-Newsletter

The Professional Outreach Program now has a monthly e-newsletter. AAW members in local clubs who may benefit from this information are encouraged to join the POP and receive the e-mail monthly they can do so at this AAW website the link – [woodturner.org/community/members/signup.pl](http://woodturner.org/community/members/signup.pl) If you'd like to learn more about the POP and it's programs you go to this link – [woodturner.org/community/pop/](http://woodturner.org/community/pop/)

Trent Bosch - POP Committee Chair

## PRESIDENT'S PERSPECTIVE

BERT BLECKWENN

**JACK ENDERS** and I are making progress in our planning for the **MCW Woodturning Demo Day** on **Saturday, October 16th** at the Woodworkers Club. We hope to review our preliminary plans with Club management before our May meeting and refine our plans for review and volunteer solicitation before and at the June meeting.



Our two overall objectives are:

- [1] Support for the Woodworkers Club.
- [2] Involve as many MCW members as possible in preparing and setting up, carrying out demonstrations, and taking everything down.

Here are the details we have identified so far...

- ◆ The event will consist of two, 2-hour sessions — 10:00AM–12:00AM and 1:00PM–3:00PM.
- ◆ There will be four demonstration lathe stations – two mini/midi lathes outside and two full-size lathes inside. We are exploring the possibility of renting two 10'x10' tents for the outside setup.
- ◆ We will have an alternate plan to set up all lathes inside in case of rain or excessive heat.
- ◆ There will be two sharpening stations and four demonstrator tools/supplies tables will be needed.
- ◆ All lathes will have plexiglass shields installed and used for all demonstrations for public safety. All AAW recommended safety procedures should be explained and followed during demonstrations.
- ◆ All Demonstrators must also be AAW members so the event will be covered by liability insurance. No audience turning participation will be allowed behind the lathes.
- ◆ Three additional booths/tables will be set up for:
  - [1] An MCW-member turnings exhibit.
  - [2] MCW/AAW brochures, newsletter samples, AAW journals, MCW-member turning pictures
  - [3] Woodworkers Club promotional items.

Each of the MCW stations should be manned by two MCW members at all times and the Woodworkers Club station manned by a store employee.

- ◆ Demonstrators should choose what they will demonstrate based on engaging those who will attend the event. Turning demonstrations at each of

the four lathes should be different and structured to be no longer than 15 minutes each. Giveaway of turned objects is encouraged.

- ◆ Demonstrators should provide their own turning materials, tools, supplies.
- ◆ Each Demonstrator should have an Assistant. The Assistant should focus on answering questions and directing questions to or soliciting comments from the Demonstrator. Demonstrators and Assistants should have MCW nametags.
- ◆ Demonstrators should practice their demonstrations beforehand and have a working session with their demonstration Assistant so they operate as a team and anticipate each other's needs in engaging with the public.
- ◆ MCW members not demonstrating should refrain from engaging in conversation at any of the demonstration stations. That is the role of the Demonstrator and the Assistant.
- ◆ If an MCW member is not interested in demonstrating or acting as an Assistant, there are several support efforts we will need volunteers for:
  - ◆ Manning MCW/AAW display stations and gallery
  - ◆ Lathe Station setup/takedown
  - ◆ Preparing banners/placards for each demonstration area, gallery, and MCW/AAW table.
  - ◆ Publicity beyond what the Woodworkers Club will provide such as local newspapers, local TV stations, notices at local facilities such as libraries, senior centers, VisArts, wood stores, etc.

Please start thinking now how you can participate as a Demonstrator, Assistant, or Support Volunteer. We will be starting a roster shortly to identify and manage members' involvement. Look for an e-mail soliciting your participation in mid-May.

Gary Guenther has found a great article on tips for demonstrators that we are using as a guide. Suggest members check it out at the following website:

[hiltonhandcraft.com/Articles/TipsForClubDemonstrations.asp](http://hiltonhandcraft.com/Articles/TipsForClubDemonstrations.asp)

The **MCW Woodturning Demo Day** will be a great way to expand your involvement in MCW in whatever way you feel most comfortable and show our support to the Woodworkers Club in their continuing efforts to support MCW.

Happy Turning!



## APRIL SHOW & TELL

MICHAEL BLAKE



**RICHARD WEBSTER** 8½" x 6" BOWL  
[RED CEDAR]

**MICHAEL COLELLA**  
5½" x 4" BOWL [CHERRY]



**ELIOTT SCHANTZ**  
2" x 5½" TRIAL-RUN CAPTURED RING BABY RATTLES [MAPLE]





## APRIL SHOW & TELL

MICHAEL BLAKE



**TERRY LAMB** 1<sup>3</sup>/<sub>4</sub>" x 5<sup>1</sup>/<sub>2</sub>" ORNAMENTS

LEFT-TO-RIGHT  
[WALNUT & HOLLY]  
[HOLLY, PAINTED]  
[WALNUT & MAPLE]  
[BLEACHED MAPLE & IPE]



**TIM ALEY** — 9<sup>1</sup>/<sub>2</sub>" x 4" SALAD BOWL ABOVE — 9<sup>1</sup>/<sub>2</sub>" x 2" BOWL BELOW [BEECHNUT]





## APRIL SHOW & TELL

MICHAEL BLAKE



GARY GUENTHER  
6" x 4½" BOXES  
[SPALTED BIRCH]



2½" x 5½"



CLIF POODRY  
LIDDED BOXES  
[HONEY LOCUST]



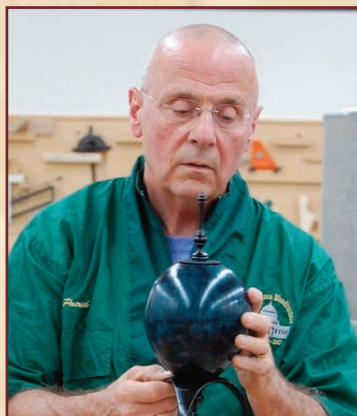
3½" x 3½"





## APRIL SHOW & TELL

MICHAEL BLAKE



**BILL AUTRY** 5½" x 12" TURNED & CARVED EGG-SHAPED JEWELRY LIDDED BOX [UTILE, TULIPWOOD]  
12" x 1½" TURNED & CARVED CELTIC KNOT PLATTER [BASSWOOD]



**DON VAN RYK**  
5" x 6" NATURAL-EDGE VASE  
[BLACK CHERRY]





## APRIL SHOW & TELL

MICHAEL BLAKE

### NEW MEMBER ROBERT BRULOTTE



4" x 2½" HOLLOW VESSEL [OYSTERWOOD]



4½" x 2" BOWL [LIVE OAK]



4" x 2" ROLLING BOWL  
[AFRICAN BLACKWOOD, BIRDS' EYE MAPLE]



4½" x 2½" NATURAL-EDGE BOWL  
[OYSTERWOOD]



4" x 2" ROLLING BOWL  
[AFRICAN BLACKWOOD, CYPRUS]





## APRIL SHOW & TELL

MICHAEL BLAKE



**STAN WELLBORN**  
9" x 5" BOWL  
[BLACK LOCUST]



### CARL POWELL TAIL-CENTER PEN BUSHINGS

One problem with standard pen mandrels is pressure from the tailstock causing them to bow. The end result is a pen that is oval in cross section, which does not look good. Many pen turners work between centers where bushings are used to hold tubes individually between drive and live centers – no mandrel is used. While this works, it has the disadvantage of not being able to see both parts of the pen while turning, and could require machining one's own bushings.

Penn State Industries offers pen turners another approach – a live center with a through-hole sized for a standard **A** mandrel. To use, you discard the brass nut that comes with the mandrel and use the tailstock to provide pressure needed to turn the blanks. The basic idea is a good one, but there are two problems... [1] The center only fits an **A** mandrel (used with all PSI pen kits), so designs using the larger **B** mandrel will not fit. [2] It costs \$40 for what is effectively a one-trick pony.

The PSI method got me thinking. I did some checking, and found, if you knock the center pin out of a **Oneway** live center (it is designed to allow this), both **A** and **B** mandrels fit through the opening. All that is needed is a way to keep the mandrels "centered" in the live center. This is where these bushings come in. They are threaded to fit on to the Oneway's mounting point ( $\frac{3}{4}$ "x10tpi) and have a hole drilled in the center for a close fit for the appropriate mandrel. To use them, I just thread them onto the center, slide the tailstock up to the pen mandrel so the rod goes into the hole in the bushing, then use the tailstock to put as much pressure as I need onto the pen blanks. It allows me to see both portions of the pen body together without bowing the mandrel and causing ovals. It even has the advantage of being quicker, since I don't have to tighten and loosen the brass thumbnut that comes with mandrels.

See [content.penturners.org/articles/2010/turningbetweencenters.pdf](http://content.penturners.org/articles/2010/turningbetweencenters.pdf) for more details on turning pen blanks.





## APRIL DEMONSTRATION

MICHAEL BLAKE/GARY GUENTHER

### PATRICK O'BRIEN SHARES HIS TECHNIQUES & SECRETS FOR TURNING SMALL NATURAL-EDGE HOLLOW FORMS FROM LIMBS.

**O**UR demonstrator in April was Patrick O'Brien... a member of Capital Area Woodturners who began turning in late 2001. By late 2008, he had set up his own permanent studio. In this relatively short period of time, he has become a well known and successful professional woodturning artist. He has also developed an immediately recognizable artistic style of his own.

Two of his favorite pieces are small, winged, natural-edge, hollow forms [1] and small goblets with long, thin stems [2]. He turns both of these signature pieces from limbs most of us would probably think of as waste material.

Here is the limb section he turned into one of his signature winged hollow forms... a rather plain piece of maple [3].

Using a previously turned piece, Patrick explained why the orientation chosen when mounting a limb section will be crucial to preserve just the right amount of bark for the edge and perhaps even sections of the sides. [4]

Mounted between centers with a screw plate in the head stock and a live center in the tail stock, the piece will be secure and safe. Patrick prefers the screw mount, but commented that a spur center in the headstock could also be used just as well. Starting the lathe, Patrick began roughing out the shape he has in mind with a 1/2" Bowl Gouge. [5]

After a few minutes, he stops the lathe to check his progress and see how the overall shape is beginning to develop. [6]

At this point, Patrick switched to a *Oneway Sure Grip* 1/2" Spindle Gouge with a "detail" grind to begin refining the outside shape. [7&8]

Here, the rounded-over side bevel of the tip of the Spindle Gouge is visible as Patrick once again stops to assess his progress. [9]

Patrick made fairly quick progress in getting to the final outside profile of the piece, from the under side of the flared lip to the section that will become the tenon which will hold the piece when he reverses it for hollowing. [10]





## APRIL DEMONSTRATION

MICHAEL BLAKE/GARY GUENTHER

The final step in this phase of turning was to cut and shape a tenon on the bottom of the piece so it can then be reversed, horizontally, for inside hollowing.

Patrick used standard 1/2" Skew Chisel for this operation. [11]

Next, Patrick replaced the screw chuck in the headstock with *Vicmarc's VM120 5" Scroll Chuck*, with *Long Nose Spigot Jaws*.

He reversed and mounted the piece to begin hollowing. [12] The long taper of these jaws makes it much easier and safer when cutting from the head stock side of the piece.

After moving the tail stock out of the way, he turned the tool rest 90° and began his hollowing cuts using the Spindle Gouge.

In photos [13-14-15], the hollowing progress is clear, but it should be pointed out that he left the walls of the piece fairly thick at this stage, with little inside contouring done.

He worked from the center of the piece, cutting back towards the outside.

With the flute of the gouge "aimed" to the left and raised slightly above center, he used the lower left side of the gouge's tip to make the cuts inside the piece.

He kept a very close eye on the outer edge just under the rim as his guide for gauging the thickness.

Here [16], Patrick rolls the gouge over to the right and lifts it a bit higher for smooth-cutting the outer rim.

Next, Patrick used a folded piece of *Norton 3X 220-grit sandpaper* to smooth the top of the outer rim. [17]

Using a depth gauge, Patrick checked the depth so as to avoid ending up making a "funnel" instead of a bowl. [18]

Then, he used a thickness gauge to see where he stood and how much wood he needed to cut away inside and where, to match the outer contour of the piece. [19]

Returning to his Spindle Gouge, Patrick adjusted the depth of the inside and removed any ridges that might make the final hollowing more difficult. [20]



11



12



13



14



15



16



17



18



19



20



## APRIL DEMONSTRATION

MICHAEL BLAKE/GARY GUENTHER

To further refine the inside surface, Patrick used another Oneway Sure Grip tool... equipped with a curved-end, hollowing scraper and an "outrigger" or "torque arrestor". [21]

The outrigger provides quite a number of advantages, not the least of which is stability.

What's more, the additional arm keeps the cutting edge of the blade in proper alignment so cuts are more easily made and safely controlled.

Especially with such a small piece as this one, removing much of the physical stress (torque) – and even mental stress – from the hollowing process is a significant advantage. [22]

Finally, Patrick used a small, standard hook-nosed scraper to get under the tight curve of the rim. [23]

To complete this piece, it must again be reversed horizontally. To support the now rather fragile piece, Patrick uses a *Kirsten Cone*. [24]

The center shaft of the cone is mounted in the head stock and a live center in the tail stock. [25]

The advantage of this tool is it can be adjusted to support the piece with the center shaft applying direct pressure to the bottom inside against the tail stock, while the cone's functions are to center and stabilize the piece. [26 & 27]

With the piece now secured between centers, Patrick turned away most of the tenon. [28]

Using a piece of sandpaper rolled into a small tight "tube", Patrick was able to sand the tight space under the rim and the small arc of the foot. [29]

All that remains now is to turn away the final nib of the tenon, do any necessary final sanding, and apply a finish. [30]

Goblets with a small bowl and a long, unusually thin stem are another of Patrick's signature pieces. [PAGE 12, #2]

With time running down, Patrick began the next part of his demonstration knowing full well he would likely not be able to complete the entire piece.

We all appreciated his willingness to present as much as time allowed.



21



22



23



24



25



26



27



28



29



30



## APRIL DEMONSTRATION

MICHAEL BLAKE

Patrick had pre-turned a tenon in the largest end of this maple limb. [31]

He mounted it between centers, using a scroll chuck to hold the tenon and a live center for what will be the bowl section of the goblet.

Patrick used a 1" Spindle Roughing Gouge to begin shaping the three sections of the goblet... the bowl, the stem, and the foot. [32]

He only turned the center section far enough to clearly define the other two sections. [33]

Working from the tail stock, Patrick started to shape the inside and the outside of the bowl section using his 1/2" Spindle Gouge. [34 & 35]

[NOTE: At this point, Patrick would normally remove the tail stock, hollow, and sand the inside of the bowl section. After hollowing the bowl, Patrick uses a shop-made jam chuck (seen on the end of his gloved right index finger). [36] The tail stock is moved back in place, with the jam chuck inside the bowl, and the remaining steps are completed.]

Rushing to beat the clock, Patrick began taking the stem down, close to final thickness. [37]

As with all fine, thin spindle work like this, you must work in small areas – no more than about 1" at a time. [38]

Cut carefully in one direction only [39] and once a section is turned to the correct dimension, do not go back. [40]

Thanks to Patrick for sharing his experience and expertise in an entertaining and enlightening demonstration.

Maybe he can visit us again and complete the goblet or turn another one.



PHOTOGRAPHS IN THIS SECTION BY TIM ALEY, MICHAEL COLELLA, STUART GLICKMAN, AND GARY GUENTHER.

---

## OPEN LETTER FROM AAW

BINH PHO

### ARTSY AND CONVENTIONAL

I am in my second year on the board now, and this is my second newsletter. In my first newsletter last year I expressed my excitement about the POP (Professional Outreach Program) rotations at the Albuquerque symposium and I promoted the POP program with much enthusiasm. The AAW was offering new opportunities for our members. But I was caught by surprise with responses from a few members at large who said that they were not interested in the POP program and might not attend the symposium as a result. This, despite the many other rotations packed with woodturning and plenty of wood chips flying.

Admittedly I am an artsy kind of guy. I love all forms of art, but most of you probably don't know that I still teach the beginner class in Chicago. I always begin the class with spindle turning, then follow it with sharpening and bowl turning. That is where we all start. But do we stop here? Half of my beginner students have joined the Chicago Woodturners Chapter; some stay at the intermediate level, but some have become very good and want to go further. I also demonstrate and teach surface design around the world. It's just a fancy name for the artsy stuff that we can apply to the surface of our turnings so we can transform a bowl to a piece of art. Ironically, in this surface design class I get many students who are beginners.

The AAW is the biggest craft organization in the world. It consists of a diverse group of people with many skill levels and a variety of different needs. The most obvious benefit for an AAW member is the journal, but in my opinion the thing that makes the AAW such a world-class craft organization is our willingness to share our techniques. This spirit of sharing seems to occur more in woodturning than in any other medium. Without this sharing our journal would be very thin indeed with little new material, our symposiums would have far fewer rotations, and we wouldn't be at 13,600 members and counting. Sharing the technique of turning a salad bowl is done in the same spirit as sharing the techniques of embellishing it – we do not separate artsy and traditional woodturning.

I view the AAW as inclusive, not an organization of them and us! We can all enjoy our sharing spirit and be happy and have fun at the symposium. The truth is that the beginners, the intermediates, the hobbyists, the production woodturners, the artsy folks, the professionals, and the collectors all make the AAW possible and we all have a place in the symposiums and in the Journal. The AAW is a very big tent, and we strive to make sure there is plenty room and excitement in it for everyone. The

beginners need someone to teach them the skills and something to look forward to. The professionals need to teach classes to make a living. The artsy need to be there to inspire the hobbyists and the intermediates.

A good reflection of this diversity is our EOG (Educational Opportunity Grant) auction. The work is assembled from all across the membership, from different skill levels. The proceeds go directly into the EOG fund and to POP and are given out the following year to members who need the money to improve their skills. In turn recipients help and give back in the future. The AAW awards on average \$70,000 per year to members. The POP awards money, too.

But there is always a way we can better share the same sandbox. As part of the POP, I am proud to introduce two new initiatives at the symposium – the *Emerging Artist Program*, and *Intimate Critique Sessions*.

#### Emerging Artist Program

This program provides a demonstration opportunity within the AAW membership for emerging artists having the potential to be significant contributors to the woodturning field. It recognizes merit and provides invitees with a platform for possible future demonstration opportunities, plus possible publication in the journal.

The Emerging Artists demonstration area will be inside the entrance to the Instant Gallery (IG) room – a great location. The artists selected by the committee are Pascal Oudet (France), Nick Agar (UK), David Belser (NH), and Tucker Garrison (NC). They will have a special table nearby for their IG. Each will do a two-hour demonstration, showcasing the techniques and processes for which they were selected. Demonstration times are 3-5 pm on Thursday during registration and IG set-up, plus Friday, Saturday, and Sunday lunch breaks.

#### Intimate Instant Gallery Critiques

Jerry Kermode is organizing *Intimate Instant Gallery Critiques* to be held on Friday and Saturday during the first half of the lunch break. Attendees can choose to have one of their pieces discussed in a small group setting. Up to fifteen people can bring one object to a table for an intimate, up-close discussion. Moderators will be present. Signup sheets will be available in the Instant Gallery.

Subjects and moderators are – hollow forms with David Ellsworth, surface treatment with Jacques Vesery, natural edge with Jerry Kermode, anything goes with Jim Keller, sculptural work with Betty Scarpino, and segmented work with Curt Theobald.

I hope to see you in Hartford!

---



---

## FUTURE DEMONSTRATIONS/EVENTS

GARY GUENTHER

---

### ♦ June 10th – *CAW's Tom Boley will show how he turns his natural-edge "barking bowls".*

Tom recently started his own professional architectural and artistic woodturning shop in Northern Virginia and is the first President of the one-year-old Catoctin Area Turners in Leesburg. See his excellent web site at [www.re-doakhollow.com](http://www.re-doakhollow.com). He will be coming up to show us some forms that are currently of interest to him – possibly his "barking" bowl, or perhaps something different. Watch the MCW Website for updates.

---

### ♦ July 8th – *Warren Carpenter – Working with burls and inserting slices of walnut in bowl edges.*

We had such a good time with Warren last November, he is coming back and show us more of his magic with "interesting" pieces of wood. Burls are rare and/or expensive, and it takes vision and practice to make the most of them. Warren will help us see what's inside.

---

### ♦ August 12th – *To Be Determined.*

---

### ♦ September 9th – *Mark Sfirri – An Acknowledged Master of Multi-Axis Turning.*

Mark's unique and instantly recognizable works are in the best museums and collections in the world. We have seen some of his pieces in our field trips. It's going to be really hard to decide what forms to ask Mark to turn from his amazing repertoire of bats, candlesticks, figures, curved handles, etc. Mark was in DC in April to receive a Distinguished Educator award from the James Renwick Alliance, and we are very pleased and privileged that he will be able to come back to join us in September.

---

### ♦ October 7th – *Jim Duxberry – Techniques for making a kaleidoscope.*

Jim will demonstrate the turning of centerless pieces with his unique cone jig and apply this technique to the construction of his Traditional Model Kaleidoscope. This approach is adaptable for hollow vessels such as birdhouses, ornaments, or any staved-type cylindrical pieces. Jim is also the inventor of the Resp-O-Rator™ of which he holds two U.S. Patents.

---

If you have suggestions for future demonstrators, or would consider demonstrating yourself, please contact Gary Guenther by e-mail at <[gary.guenther@att.net](mailto:gary.guenther@att.net)> or call 301/384-7594.

---

## MCW MEETING SCHEDULE – 2010

Meetings are held on the Thursday before the second Saturday each month, from 7:00 PM–9:00 PM, at the Woodworkers Club in Rockville, Maryland. See our website for a map to the meeting site.

<b>2010 MEETING DATES</b>	<b>JAN 7</b>	<b>FEB 11</b>	<b>MAR 11</b>	<b>APR 8</b>	<b>MAY 6</b>	<b>JUN 10</b>
	<b>JUL 8</b>	<b>AUG 12</b>	<b>SEP 9</b>	<b>OCT 7</b>	<b>NOV 11</b>	<b>DEC 9</b>

## MCW'S TURNING JOURNAL

A monthly publication of Montgomery County Woodturners – A Chapter of the American Association of Woodturners.

Editor: Michael Blake – Phone: 301/589-1815 – Email: mb7298@comcast.net

THE MCW WEBSITE IS <http://montgomerycountywoodturners.org>

## MCW CONTACT INFORMATION

### OFFICERS

President	Bert Bleckwenn	bableck@gmail.com	301/634-1600
Vice President	Clif Poodry	cpoodry@aol.com	301/530-4501
Program Chair	Gary Guenther	gary.guenther@att.net	301/384-7594
Membership	Bill Autry	bill_autry2004@yahoo.com	301/524-7198
Secretary	Tim Aley	taley16922@aol.com	301/869-6983
Treasurer	Bob Browning	suznbob@verizon.net	301/774-0305
Webmaster	Carl Powell	cnpowell@gmail.com	301/924-6623
Newsletter Editor	Michael Blake	mb7298@comcast.net	301/589-1815

### VOLUNTEERS

Web Albums.....	Carl Powell, Gary Guenther	S&T Recording.....	Richard Webster
Mentor Program.....	Donald Couchman	Gallery Photography.....	Hal Burdette
Group Buys.....	Stan Wellborn	Photography Assistant.....	Donald Van Ryk
Lending Library.....	Clif Poodry	Candid Photography.....	Tim Aley
Wood Identification.....	Ed Karch	Candid Photography.....	Stuart Glickman
Exhibit Committee.....	Phil Brown, Hal Burdette, Clif Poodry	Candid Photography.....	Gary Guenther

## MEMBER DISCOUNT PROGRAMS

STAN WELLBORN

### HARDWOODS, INC. • FREDERICK, MARYLAND – [hardwoodsincorporated.com](http://hardwoodsincorporated.com)

10% off all turning stock, lumber, moldings, finishes and hardware. 10% off on all Amana router bits and blades that list for \$75.00 and under and 20% off those that list for over \$75.00. 5% off all plywood and veneer products.



### ROCKVILLE WOODWORKERS CLUB – [woodworkersclub.com](http://woodworkersclub.com)

MCW and other club members, remember to support the Woodworkers Club by purchasing turning supplies during our meetings and save 10% on the retail price.



### 2SAND.COM – [2sand.com](http://2sand.com) or call 800/516-7621

2Sand.com is a coated abrasive specialist focused on fast service and fair prices providing superior sanding discs, sandpaper sheets, and woodturning tools to woodshops. MCW Member Discount is 10% (discount code available in the restricted area of the MCW Website).



### CRAFT SUPPLIES USA – [woodturnerscatalog.com](http://woodturnerscatalog.com)

Club members can save 10% on all finishes & disc abrasives from Craft Supplies USA. Just mention your club name and save, all year long. You can always see current club specials by clicking on the members login button on their homepage. New 15% specials are updated on the 1st of the month, which can be accessed by using on the link above and going to the club member login located on the lower right portion of the page.



### HARTVILLE TOOL CLUB – [hartvilletool.com](http://hartvilletool.com)

Members get a 15% discount, with MCW receiving a 3% rebate. If you have not signed up for this program, let Stan Wellborn know you want to do so. He will let Hartville know you are an MCW member and sign you up. Catalogs and ordering instructions are available or at meetings.

