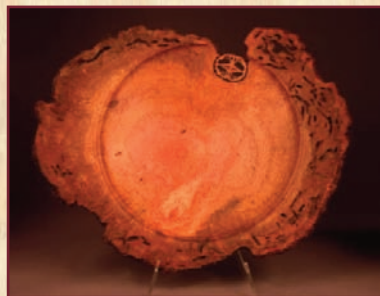


IN THIS MONTH'S ISSUE

June Meeting Minutes.....	2
Member News.....	3
Financial Report.....	3
Membership Report.....	3
Call For Entries.....	4
Items For Sale.....	4
President's Perspective.....	5
June Show & Tell.....	6-10
Montgomery County Fair.....	11-12
June Demonstration.....	13-17
Future Demonstrations/Events.....	18
Future Meetings, Contact and Discount Information.....	19



NEXT MEETING ANNOUNCEMENT

JULY 2010 MONTGOMERY COUNTY WOODTURNERS MEETING...

DATE Thursday – July 8, 2010

TIME 6:30 PM – 9:00 PM

LOCATION The Woodworkers Club
4950 Wyaconda Road
Rockville, Maryland 20853
301/984-9033



AGENDA 6:30-7:00 — Bring a chair, if you wish... be sure to wear your name tag... register items for *Show & Tell* with Richard Webster... make your bid on *Silent Auction* items... sign out and pay Clif Poodry for videos from the club's *Lending Library*.

7:00-7:30 — Business meeting... *Show & Tell*.

7:30-8:45 — PROGRAM – Warren Carpenter returns to show how he deals with burls and uses walnut slices to fill voids.

[THERE WILL BE A \$10.00 DEMONSTRATION FEE THIS EVENING.]

8:45-9:00 — Pick up and pay for any of your items from the *Silent Auction*... help pack up and clean up the space.

JULY PROGRAM – WARREN CARPENTER WORKING WITH BURLS & WALNUT SLICE INSERTS

WARREN CARPENTER has had, virtually from the beginning of his woodturning career in 1999, a reputation for creating extremely unique and visually stunning pieces of turned wood art.

He puts it this way – *“With an ever-expanding knowledge of trees and wood, I am always on the lookout for the special trees or parts of trees that will help me create a unique piece.”*

“There are few things better than finding a burl and figuring out how to turn it into one or more pieces of artwork.”

Put more simply and mysteriously... Warren seems to be able to quickly and clearly “see” what is inside any given piece of wood. This uncanny ability allows Warren to experiment with new shapes and forms that are clearly visible – once they have been turned – to those of us not blessed with his kind of vision.

When Warren spent time with MCW last November, he concentrated on showing how he creates several of his unique forms – from a tiny, winged bowl to natural-edge bowl, both turned from a truly ugly piece of Osage Orange crotch others might have used for firewood.

We are fortunate Warren's daughter lives in the DC-metro area and hope he can make a habit of visiting MCW occasionally when he comes to town.



JUNE MEETING MINUTES & PHOTOS

TIM ALEY, SECRETARY

PRESIDENT Bert Bleckween called the June 2010 meeting to order at 7:06PM and welcomed 25 members and guests. Pat McVicker introduced himself as a new member.



NEW MEMBER PAT McVICKER

Richard Webster checked in items at the *Show & Tell* table including tools, bowls, and a box with Don Van Ryk running items from the table to photographer Stuart Glickman.



Gary Guenther announced that the August meeting will be a combined *Show & Tell/Demonstration* of members' shop-made tools and jigs.

Tim Aley announced there are three turners at WLAST.org for those not going to Hartford and wood available from an oak tree that had come down in northern Montgomery County.

MCW will be demonstrating at the Montgomery County Agricultural Fair again this year. The Fair is set for the week of August 13th-21st. We have the Great Wheel Lathe and Shaving Horse on loan from Chris Holmgren again. Contact Bert Bleckween if you are interested in volunteering. [Complete details can be found at pages 11/12 below.]

Bert Bleckween updated the membership on MCW *Demonstration Day* at the Woodworker's Club. The event is scheduled for Saturday, October 16th, from 10:00AM-12:00NOON and 1:00PM-3:00PM.

Current commitments for demonstration volunteers so far are:

- Tim Aley – Bottle Stoppers
- Seth Gottlieb – Pens
(Tim and Seth will assist each other.)
- Bill Autry – Spindle Turning
(Carl Powell)
- Clif Poodry – Small Lidded Jewelry Boxes
(Assistant – Gary Guenther)
- Mark Supik – Fiber Art Tools
(Assistant – Nancy Supik)
- Richard Webster – Small Bowls (Green Wood)
(Assistant – Michael Blake)

Other Volunteers so far are:

- Display Gallery – Phil Brown
- Photography – Mike Colella
- Refreshments – Jack Enders

Volunteers are still needed for the following tasks:

- ♦ Introduction to Woodturning Overview Demo
- ♦ MCW Information Table [Manning, Setup/Takedown]
- ♦ Lathes [Setup/Takedown]
- ♦ Signs [Creating, Setup/Takedown]
- ♦ Sharpening Station [Demonstration, Setup/Takedown]

Gary Guenther introduced our demonstrator for the evening – Tom Boley. Tom will share his techniques for turning Plates/Platters, using double-sided tape for mounting pieces like this to a lathe headstock.



TWO SETS OF 8 MATCHING MAPLE STEAK PLATES (AND 3 EXTRAS) FROM TOM BOLEY'S RED OAK HOLLOW LATHE WORKS.

MEMBER NEWS

PHIL BROWN/MICHAEL BLAKE

IMPORTANT NOTICE

The Club's Library copy of the DVD entitled *The Skew Chisel - The Dark Side, The Sweet Side*, by Alan Lacer has been missing for several months. If you have ever borrowed this DVD from the Library, please check around your TV's, under the furniture where you watch TV, the trunk of your car – anywhere else you can think of – to see if you have simply forgotten to return it.

- ❖ **CLIF POODRY** teaches the following classes at the Woodworkers Club in Rockville –

Introduction To The Lathe on Saturday July 10th.

Beginning Bowl Turning on Saturday July 17th.

For more information see: woodworkersclub.com/practice%20class1.htm

- ❖ **ED KARCH** reports that Laquetta's ankle injuries sustained during the Great Blizzard of 2010 have healed nicely and both of them will be attending the meeting this month.

- ❖ **STAN WELLBORN** has been asked repeatedly and finally persuaded to run for the Board of AAW in the fall. Stan's candidate statement will be published along with those of other candidates in the August issue of *The American Woodturner*.

- ❖ **MCW MEMBERS** who attended the AAW Symposium in Hartford included Tim Aley, Robert Brulotte, Michael Blake, Phil Brown, Hal Burdette, Eliot Feldman, Gary Guenther, Jerry Kaplan, Clif Poodry, and Mark Supik. Phil, Hal, Clif, Mark and possibly others volunteered as demonstrator assistants, youth teachers, and gallery and auction assistants. Phil picked up the two third place award plaques MCW received for the website and newsletter. And Phil sold his flare piece that had been included in the Maple Medley exhibit.

- ❖ **MARK SUPIK's** July 2010 schedule for full-day Saturday & Sunday **Spindle Turning** and **Bowl Turning** classes at his commercial shop in Baltimore is available here and on their website. The lathes and shop are a treat to see and use. The shop is at #1 North Haven Street in Baltimore, just a few blocks west from the Lombard Street exit off of I-895.

Class size is limited to 5, with each student on his/her own lathe. All classes include tool use, safety, techniques, and practice in the morning with a focus on projects in the afternoon. Lunch from DiPasquale's Market deli comes with the class. \$50 deposit required and refundable up to one week prior to class date. \$120 class fee is offered to MCW members (a 20% discount).

Saturday, July 31st – Beer Taps 101

Sunday, August 1st – Bowl Turning

Additional details at marksupikco.com/School/schoolcurrent09-1.html Call 410/732-8414 to register.



CLIF POODRY

DON'T BE SHY – PROMOTE YOURSELF. Let us know about your woodturning activities so they can be included in the newsletter each month. Send your information to Bert Bleckwenn at bableck@gmail.com or call 301/634-1600 OR to Michael Blake at mb7298@comcast.net or call 301/589-1815.

FINANCIAL REPORT

BOB BROWNING, TREASURER

ACCOUNT BALANCE 05/31/10	\$ 3,855.39
INCOME \$4.00 [LIBRARY] \$1.00 [SILENT AUCTION]	\$ 5.00
EXPENSES \$150 [DEMONSTRATOR] \$155.90 [WOUNDED WARRIOR] \$35 [2 DVD'S] \$30 [CLUB EXPENSE]	(\$ 370.90)
CURRENT ACCOUNT BALANCE 06/30/10	\$ 3,489.49

MEMBERSHIP REPORT

BILL AUTRY, MEMBERSHIP CHAIR

At our meeting in June, a new member signed up – Pat McVicker. *Welcome to MCW.*

CALL FOR ENTRIES

PHIL BROWN

◆ CRAFT FORMS 2010

The 16th International Juried Exhibition of Contemporary Craft, December 3, 2010 – January 23, 2011. Entry Deadline is September 16, 2010, and the entry fee is \$40. Download a prospectus (pdf format) from:

www.craftforms.com

◆ TURNING 25 – A CELEBRATION

This will be an exhibition of chapter created pieces for the *25th Anniversary AAW Symposium* in 2011 in St. Paul. The exhibit goal is to have every AAW chapter represented and for each chapter to enter a lathe turned work fitting within an 8"-size cube that exemplifies and represents that chapter. While you are lounging on the beach this summer, be thinking of what a joint project, turned by several or many of our members, might look like. A bit more information is available at – www.woodturner.org/sym/sym2011/Exhibit/

ITEMS FOR SALE

MICHAEL BLAKE

◆ SEARS CRAFTSMAN 10-INCH TABLE SAW

25 year-old (1985) with electronic controls, 1 HP motor, enclosed mobile base with 4-inch dust collection port, mitre gauge, rip fence, two Freud LU85M carbide-tipped blades, panel-cutting jig, two zero-clearance inserts, and owners manual.

PRICE – \$250.00 Contact Bert Bleckwenn at 301/634-1600 or bableck@gmail.com

◆ 100-150 BOARD FEET OF CHERRY LUMBER

About 10 years ago I had a nice, large cherry log milled up for future use. The log was about 7½ feet long and had enough diameter to yield some boards 18" wide. As you can see from the photo below, some of the pieces are over 3" thick, but the majority are about 1" thick, and some are thinner. They are good and dry now, but I do not expect to ever use these boards. Therefore, I'd like to sell the stack. The boards are located near New Market, Maryland. I will donate 10% of the sale to MCW.

PRICE – \$350.00 Contact Bob Browning at 301/774-0305 or suznbob@verizon.net



PRESIDENT'S PERSPECTIVE

BERT BLECKWENN

UPDATE ON MCW DEMONSTRATION DAY

Planning for our MCW Demonstration Day at the Woodworker's Club on Saturday, October 16th from 10:00AM to 3:00PM is proceeding well, but we need at least 3 more volunteers... 5 would better.

Volunteers for the majority of program items have come forward. The current list of MCW volunteers and additional needs are:

TURNING DEMONSTRATIONS

- ◆ Lathe 1 [INSIDE -NOVA-DVR]
Richard Webster – Small Green Bowls
ASSISTED BY – Michael Blake
- ◆ Lathe 2 [INSIDE -POWERMATIC]
Bill Autry – Spindle Turning
ASSISTED BY – Carl Powell
- ◆ Lathe 3 [INSIDE -ONEWAY]
Mark Supik – Fiber Art Tools
ASSISTED BY – Nancy Supik or Danielle Craven-Slaski
- ◆ Lathe 4 (Outside–Jet Mini-lathe)
Seth Gottlieb, Pens
Tim Aley, Bottle Stoppers
- ◆ Lathe 5 (Outside–Jet Midi-lathe)
Clif Poodry, Small Lidded Boxes
ASSISTED BY - Gary Guenther

SHARPENING TABLE/DEMO

- ◆ ◆ **Need 1-2 volunteers**

DISPLAY GALLERY

- ◆ Phil Brown

INFORMATION TABLE

- ◆ ◆ **Need 1-2 volunteers**

SETUP/TAKEDOWN

- ◆ Mark Verna
- ◆ ◆ **Need a second volunteer**

PHOTOGRAPHY

- ◆ Mike Colella

REFRESHMENTS

- ◆ Jack Enders
- ◆ Elliot Schantz has donated several white melamine shelving boards for use in building a display unit and a couple of plexiglass shields we can likely turn into safety shields.

Don't be left out of what will be a fun event for participating members at MCW Demonstration Day!

MONTGOMERY COUNTY AGRICULTURAL FAIR BIG WHEEL TURNING DEMONSTRATIONS

>>> VOLUNTEERS NEEDED <<<

This year's 9-day-long Montgomery County Fair is set for August 13th-21st. Chris Holmgren of Seneca Creek Joinery has again graciously agreed to loan us the use of his Great Wheel Lathe and Shaving Horse this year.

Mark Verna has offered to donate some white oak and hickory for use as turning billets.

We need two-member team volunteers for as many time slots as possible. Given the prior year's experience, we will attempt to staff each afternoon slot from Noon-5:00PM and evening slot from 5:00-7:30PM with the times flexible given members work schedules and availability.

PLEASE CONTACT ME at bableck@gmail.com or 301-634-1600 TO VOLUNTEER.

For those not familiar with past MCW demonstrations at the fair, details of the demo activity and volunteer guidance is listed in the newsletter. Take a look at the short video of Clif Poodry's son turning on the Great Wheel Lathe at the fair last year that is on the lower portion of the MCW homepage website as well as a link to pictures of last year's demonstrations.

Free day passes will be provided at the August 12th MCW monthly meeting for demonstration volunteers.

See pages 11/12 below for more details about the Fair and demonstration requirements.

Happy Turning! BERT



JUNE SHOW & TELL

MICHAEL BLAKE



TIM ALEY [TOP-TO-BOTTOM]

3 1/2" x 2 1/2" WINGED BOWL [REDBUD]

7" x 5" NATURAL-EDGE BOWL [BOX ELDER]

8" x 5" NATURAL-EDGE BOWL [BOX ELDER]

16" x 6" BOWL [UNIDENTIFIED WOOD]



JUNE SHOW & TELL

MICHAEL BLAKE



RICHARD WEBSTER
8½" x 5" BOWL [FIGURED POPLAR]



MICHAEL BLAKE
[LEFT-TO-RIGHT]

1" x 4¾" DIAMOND HONE
[SPALTED TAMARIND]

1" x 4¾" XACTO CRAFT CHISEL
[GONCALO ALVES]

1" x 4¾" SCRATCH AWL
[PIGNUT HICKORY BURL]

5/8" x 4½" MULTI-TIP SCREWDRIVER
[DIAGONAL-CUT TEAK]



JUNE SHOW & TELL

MICHAEL BLAKE



GARY GUENTHER

[◀BOTTOM & LEFT▶]
HUNTER #5 CARBIDE-CUTTER
FINISHING TOOL – \$120

[◀CENTER & CENTER▶]
KERRYMARK CARBIDE-CUTTER
FINISHING TOOL – \$40-\$50

[◀TOP & RIGHT▶]
20" ALUMINUM CUSHIONED
HANDLE – \$29.50



PLEASE NOTE – WOODCRAFT IS NOW OFFERING THE LINE OF HUNTER TOOLS ON SALE FOR 15% OFF.



DON COUCHMAN
9½" x 1½" PURCHASED PLATE
[GONCALO ALVES??]



JUNE SHOW & TELL

MICHAEL BLAKE

8½" x 4½" BOWL
WITH THREE TIERS.
WHEN FINISHED, THE
PINK INSIDE AND EDGE
HIGHLIGHTS WILL BE
"COCA-COLA" RED.
[CHERRY]



ELLIOT
SCHANTZ

8" x 4" BOWL
WITH HIGH
GLOSS FINISH.
[WOOD UNKNOWN]



TERRY LAMB

5" x 5"
NATURAL-EDGE
BOWL
[MAPLE]

JUNE SHOW & TELL

MICHAEL BLAKE

BILL AUTRY

8" x 14"
LIDDED VESSEL,
TURNED & CARVED,
WITH THIN FINIALS.

[MAHOGANY, UTILE]



DONALD VAN RYK

5½" x 11"
PAIR OF
CANDLESTICKS

[RED CEDAR]

MONTGOMERY COUNTY AGRICULTURAL FAIR

BERT BLECKWENN

WE have another opportunity for MCW members to conduct daily turning demonstrations at the Montgomery County Agricultural Fair in August at the fairgrounds in Gaithersburg. Chris Holmgren from Seneca Creek Joinery has done demonstrations on his great wheel lathe for the past several years as part of the Old Timers Group and was always a crowd pleaser. MCW took over demonstrating on the Great Wheel Lathe in 2008 and 2009 with great success. Ten MCW volunteers participated in 2009.

We will staff as many afternoon (NOON–5:00PM) and evening slots (5:00PM–7:30PM) as possible this year, depending on the level of volunteer commitment. Additional details follow.

HOW TO VOLUNTEER

If you are interested in taking part, please send me an email at bableck@gmail.com, give me a call on my cell number 301-634-1600, or contact me at our July 8th meeting. I'll plan to bring this up as a topic of discussion and ask for volunteers at the meeting as well.

DATES & TIMES

Friday, August 13th through Saturday, August 21st.

Hours are 10:00AM–MIDNIGHT on all nine days of the Fair. [See above for hours of MCW demonstrations.]

LOCATION

Montgomery County Fairgrounds, Gaithersburg

For additional fair details, directions, maps, etc. check them out at – www.mcagfair.com/

DEMONSTRATION FORMAT

We will set up the Great Wheel Lathe in the Old Timer Group area next to the blacksmith shop. For turning power, kids always volunteer and are encouraged to turn the wheel crank to provide power as part of the demonstration. (Minimal cranking is required on part of the volunteers except to show the kids how to do it!). There are always a lot of kids around to provide power. We will be set up under a tented area with possible additional large tree shade coverage, depending on the final location setting.

Demonstrations consist of explaining the basic concept of turning to the audience, any history or perspective of turning that you can provide and lots of questions, along with very basic demonstration of

turning techniques. The focus is on demonstrating and engaging the audience and not necessarily trying to complete any finished objects.

You do not need to be an advanced turner at all. Turning will likely consist mostly of basic spindle turning, so this is a good opportunity to brush up on your beads and coves. We generally only use one 2-3" thick by 20" billet for any given demonstration slot.

Members of each two-person team can alternate between demonstrating, orchestrating the kids turning the big wheel crank and together fielding questions.

DEMONSTRATION SUGGESTIONS

- Keep it simple... most observers will only be interested in the basics.
- Open with a brief history and perspective of wood-turning. [I have put together a little history of turning and some suggested talking points that can be distributed to the volunteer teams before hand.]
- Keep the dialogue going... you will probably spend more time talking than turning.
- Encourage questions... this should be educational and informative.
- Talk about MCW... who we are, what we do, encourage attending a meeting, if they are interested. [We will have brochures available.]

WHAT TO TURN

- Whatever you are comfortable with... it doesn't have to be a finished product
- Between-centers spindle turning will be the norm as the headstock arrangement is set up only for spindle turning.
- A chair rung with a series of beads and coves is likely a good, basic demonstration, a tool handle or a gavel will suffice along with some very basic skew work.
- Turning stock will be mostly green wood which should be really easy to turn for demonstration purposes.
- If you want to get fancy, turn a continuous stream of shavings to impress the audience, which should be easy with green wood. This is especially useful when teenage boys like to impress their girl friends and provide lots of power at the great wheel.

MONTGOMERY COUNTY AGRICULTURAL FAIR, CONTINUED

BERT BLECKWENN

WHAT WILL BE PROVIDED ON SITE

- We will obtain the Great Wheel Lathe and Shaving Horse which will be set up in the Old Timers Area.
- A Wooden Tool Box will be stored and retrieved from the Old Timers Building which contains all the loose parts – headstock, tailstock, tool rest, crank, etc., along with a basic set of spindle turning gouges, wax for lubrication, rope and calipers, so no tools are required.
- A small wheel cart will be available for use to transport the tool box to/from the Older Timers Building along with a couple of chairs for your comfort.

WHAT VOLUNTEERS MIGHT LIKE TO BRING

- Your own set of 4-5 basic spindle-turning tools (roughing gouge, spindle gouge, detail gouge, parting chisel, and skew chisel should be sufficient) and calipers to demonstrate sizing techniques.
- Diamond stone or slip stone to touch up your tools. Since most of the wood will be green, there should be limited need to sharpening your tools.
- It is suggested that we NOT use sandpaper... use wood shavings to burnish the turnings.
- Turning face shield or goggles.
- A bottle of water or plan to purchase a refreshing lemonade at one of the nearby stands.

DEMONSTRATION TIMES SLOTS & DURATION

The Fair runs for nine days, so it is suggested that each two-person team sign up for at least one day, with an optional second day, if interested.

While the Fair is open from 10:00 AM–MIDNIGHT, the mid-afternoon to early-evening time periods (up to about 7:30 PM) is the prime traffic time. Initial slots from NOON–5:00 PM and 5:00 PM–7:30 PM have been set up for volunteer selection. Given member's work schedules and other commitments, time slots are very flexible, so if you can only volunteer for a 2-3 hour slot, that is fine.

OTHER POINTS OF INTEREST

PASSES – Free day passes will be provided since we are volunteer demonstrators

PARKING – There is some parking onsite depending on the volume as well as parking and shuttle service from Lake Forest Mall.

LIABILITY – The Old Timers Group which will be hosting us has liability coverage. In addition, since this will be an MCW sponsored event, members with AAW membership will also be covered by AAW liability insurance.

VOLUNTEER TEAMS – If you have a buddy who you want to team with, seek them out and volunteer together. If you do not have a teammate in mind, we can team volunteers once I have everyone's names and date/time preferences.

TURNING BLANKS – Mark Verna has offered to donate some green white oak and hickory which we will plan to turn into billets a couple days before the fair. In addition, if anyone has any fresh/green walnut that they are willing to donate, let me know. We will make use of whatever wood is available at Fair time. We generally go through about 20 billets.

HISTORY & PERSPECTIVE OF WOODTURNING – Let me know if needed and I can provide some basic information.

PRE-PREPARATION – Turn a few coves and beads before hand along with very basic skew work is more than sufficient. If you haven't turned on the Great Wheel, it is much slower than powered lathes, so progress is much slower.

SHARPENING ARRANGEMENTS – Sharpen your tools before coming to the FAIR and a slipstone for touchups is more than sufficient.

JUNE DEMONSTRATION

MICHAEL BLAKE/GARY GUENTHER

FROM his *Red Oak Hollow Lathe Works* one-man shop in Purcellville, Virginia, **Tom Boley** turns everything from architectural columns, historic reproductions, artistic bowls, academic maces, wooden hats, matching sets of plates & platters, to hundreds of matching stair spindles. Tom was instrumental in forming a Chapter of AAW – Catoctin Area Turners – and serves as President of the club.

Members gathered for MCW's June meeting were treated to an exceptional demonstration of turning a plate using double-sided tape to mount the blank to a headstock faceplate.

Beginning with one of the plates from the set shown on page 2, Tom first explained the basics of his approach to turning a relatively thin piece of wood when a tenon or a recess are not practical or a glue block would be too hard to remove and clean up. [1]

Using an oversized wood version of a bowl gouge, he made understanding the cutting techniques he uses extremely easy and clear. [2]

Suited up in his turning smock and armed with a pair of scissors and a roll of double-sided tape, Tom cut two strips of tape just a bit over size for the lathe faceplate. [3]

Tom then removed the protective backing from one side of the tape and pressed the strips securely in place, parallel to each other and just below and above the hole in the faceplate. [4]

With one side of the tape secured, Tom removed the other piece of backing and trimmed the tape flush with the edge of the faceplate. [5]

With a center point located, Tom used a compass to draw a circle slightly larger in diameter than the faceplate. He then carefully lined up the plate with the scribed circle [6]... and pressed it firmly in place on the maple blank. [7]

Even though the tape holds the blank to the faceplate surprisingly well, Tom always uses the tailstock with a pointed revolving center to add an extra measure of safety to turning plates and platters. [8]

What's more, the tailstock helps ensure the kind of accuracy and roundness needed throughout the turning process.



JUNE DEMONSTRATION

MICHAEL BLAKE/GARY GUENTHER

To illustrate the importance of cutting “down hill” from longer, supported fibers, Tom used a bundle of drinking straws to visually simulate the fibers of the wood. Cutting from the top edge of the blank down toward the center in this way will ensure a smoother cut and surface. [9]

Returning to the “blade” of his wood gouge, Tom explained the kind of cut he would use to shape what will be the bottom edge of the plate. [10]

The first step he takes is truing-up the outer edge of the piece so that all his future cuts will be in line with both centers and the edge. [11]

Once the edge is true, Tom begins turning the basic profile of the bottom. [12]

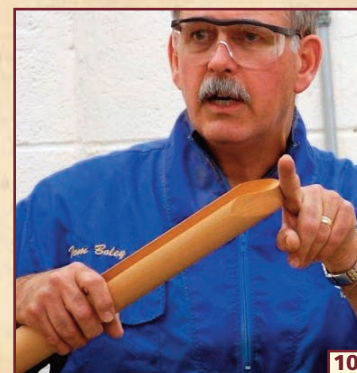
The biggest challenge here is turning a dead flat surface from one edge to the other. One of the best techniques Tom employs is turning a small bead close to the edge of the inner rim. As well as a nice design detail, this bead will help the plate sit flat. [13]

It is worth pointing out that when turning the bead and the surface inside, Tom keeps the handle of the gouge against his hip and moves his body to guide the cut. This “turner’s dance” increases stability as the tool cutting edge comes in contact with the wood. And that stability leads to smoother cuts and surfaces.

Once Tom has removed all but a very small nib in the center, he will change to a shearing cut to begin the process of removing the nib and turning of final bottom surface. [14]

Having removed the tailstock, Tom shows how to position the gouge on the tool rest and use the swept-back edge to achieve the shearing cuts he wants. [15]

Since the cutting force needed to remove the nib is concentrated in the center of the piece and the other cuts will be require very light pressure, the holding strength of the tape is more than adequate. [16]



JUNE DEMONSTRATION

MICHAEL BLAKE/GARY GUENTHER

Once the “bulk” of the nib has been turned away, Tom begins shearcut smoothing to remove any small ridges and uneven areas. [17]

After removing what experience tells him is enough, Tom stops the lathe and checks the surface with the edge of a combination square. [18]

To achieve the final smoothness and flatness the piece requires, Tom turns to a heavy-duty, 1"-wide square scraper. This tool has a slight bevel on the cutting edge. [19]



Tom feels this bevel is unnecessary because of the way the tool is used.

He positions the tool rest slightly below the center line and lifts the handle so just the cutting edge of the blade contacts the wood.

Using light and steady cuts with the tool handle tucked under his wrist and forearm for stability, he does the final smooth cutting. [20]

Once satisfied with the bottom, Tom marks the location for two circles – close together – he will use to line up the faceplate when he reverses the piece to turn this inside surface of the plate. [21]

Then using a thin-blade kitchen knife as a pry bar, Tom carefully loosens the tape and removes the blank from the faceplate. [22]

The tape adhesive residue left on the plate surface does not need be removed because it will be turned off easily. [23]

As with the bottom surface, Tom will mount the piece to the faceplate with new strips of tape. This is where the level of smoothness and flatness of the bottom also becomes critical. Any ridges, bumps, rough spots, or unevenness will weaken the strength of the adhesive bond between the wood and the faceplate. [24]



JUNE DEMONSTRATION

MICHAEL BLAKE/GARY GUENTHER

When mounting this side of the piece, Tom positions the faceplate very carefully, guided by the circles he penciled before removing and reversing the piece. If this positioning is off, the top side of the plate will be obviously lopsided. [25]

When satisfied with the position of the faceplate, Tom mounts the piece into place on the headstock. [26]

Since the center hole in the top section of the piece is perfectly centered, when Tom moves the tailstock up, the action helps re-center the piece for turning the top profile. [27]

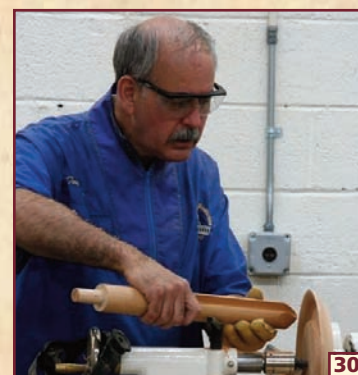
The remaining steps for shaping the top are much the same as when shaping the bottom, using the same cutting angles. [28]

The one exception is the necessity to use calipers to gauge the thickness and evenness of the wall section and the bottom section. [29]

Bringing out his large wood gouge for the final time, Tom shows the angle used with the gouge blade to remove the remaining material and begin flattening the top. [30]

With a much practised rhythm and flow, Tom easily and quickly cuts the surface down until only another tiny nib remains. [31]

Removing the tailstock once again, Tom turns the remaining nib off so he can make his final smoothing cuts. [32]



JUNE DEMONSTRATION

MICHAEL BLAKE/GARY GUENTHER

Shown here is the top surface after Tom has used his gouge to make the sheer cuts that remove and smooth any small ridges or rough spots that remain. [33]

Using a larger square, Tom checks the top section for smoothness and flatness. Since the top of the plate is the most visible, the final flattening and smoothing cuts are essential to the quality of the finished plate. [34]

Taking long, light passes with the 1" square scraper, Tom takes extra care and whatever time is needed to perfect this much larger surface with the scraper. [35]

As a final, finishing touch, Tom returns to a bowl gouge turned with the flute at about 90° to make the transition from the rim to the top surface sharp and clean. He also supports this cut from behind with his left hand. [36]

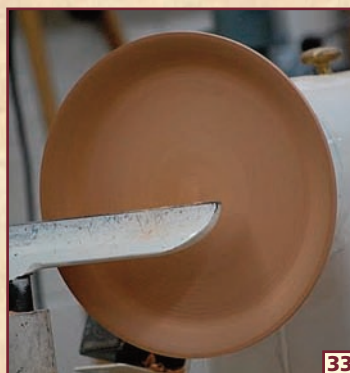
[Since the wood for this piece is very dry and this spot is the thickest part of the plate, it is safe to go back to make a small cut without getting a catch that could ruin the piece at the last moment.]

After removing the piece from the faceplate [37], Tom used mineral spirits to remove any tape adhesive residue. [38]

Here are the completed top and bottom of a simple and graceful plate. It is a testament to the talent and skill of one of the best demonstrators we have had the pleasure of learning from at our monthly meeting. [39-40]

Thanks to Tom for sharing his exceptional gifts and practical advice with us.

PHOTOGRAPHS FOR THIS SECTION TAKEN
BY TIM ALEY AND GARY GUENTHER.
FULL SIZE VERSIONS OF THESE PHOTOGRAPHS
CAN BE SEEN ON THE MCW WEBSITE.



FUTURE DEMONSTRATIONS/EVENTS

GARY GUENTHER

♦ August 12th – *Shop-Made Tools & Jigs Show & Tell.*

A great idea from Elliot Schantz – this will be a member-participation version of a “tips” session. Most of us modify tools, make tools, and create useful jigs to help us work more efficiently to achieve desired ends. Have you ever wondered what cool stuff your friends are making and using? Well, here’s our chance to find out. We would like as many of you as possible to bring something. If you can’t, bring a notebook. Let the ideas flow!

♦ September 9th – *Mark Sfirri – An Acknowledged Master of Multi-Axis Turning.*

Mark’s unique and instantly recognizable works are in the best museums and collections in the world. We have seen some of his pieces in our field trips. It’s going to be really hard to decide what forms to ask Mark to turn from his amazing repertoire of bats, candlesticks, figures, curved handles, etc. Mark was in Washington in April to receive a Distinguished Educator award from the James Renwick Alliance, and we are very pleased and privileged that he will be able to come back to join us in September.

♦ October 7th – *Jim Duxberry – Techniques for making a kaleidoscope.*

Jim will demonstrate the turning of centerless pieces with his unique cone jig and apply this technique to the construction of his Traditional Model Kaleidoscope. This approach is adaptable for hollow vessels such as birdhouses, ornaments, or any staved-type cylindrical pieces. Jim is also the inventor of the Resp-O-Rator™ of which he holds two U.S. Patents.

♦ November 11th – *To Be Determined.*

♦ December 9th – *Clif Poodry – Using Jam Chucks To Turn Small Boxes.*

Proficiency in making jam chucks will make you a more confident and productive turner. In the world of wood-turning, a “box” is a small vessel with a lid, made to hold small items. Box making is an honored tradition and a hot topic now, as evidenced by an extremely lively Special Interest Night session at the 2008 Richmond AAW Symposium. Eliot Feldman did a demo for us on making a box a year and a half ago, but we still don’t see many boxes in our S&T. Hopefully this demo will encourage more members to give them a try.

♦ January 6th – *Second Annual Show & Tell With Formal Critiques.*

We had a very positive response to this session last January, so we’re going to make it an annual affair. Instead of a demonstration, we will have an extended *Show & Tell* session with a formal critique of each piece by a panel of three selected craft, art, and turning experts. (We will have three new panelists in 2010.) Participants will bring one piece to have it reviewed. The idea is not to submit a perfect piece – rather, the goal is to learn about design, turning, and finishing techniques from the things each of us has made. This is an ideal way to learn how to improve what we are doing, from our fellow turners’ experiences, in a friendly and instructive environment. Needless to say, we want as many people as possible to come and join us for this great learning opportunity, whether or not you bring a piece to be evaluated. We’ll have a sign-up sheet at the December meeting to get an idea of the number of potential participants.

If you have suggestions for future demonstrators, or would consider demonstrating yourself, please contact Gary Guenther by e-mail at <gary.guenther@att.net> or call 301/384-7594.

MCW MEETING SCHEDULE – 2010

Meetings are held on the Thursday before the second Saturday each month, from 7:00 PM–9:00 PM, at the Woodworkers Club in Rockville, Maryland. See our website for a map to the meeting site.

2010 MEETING DATES	JAN 7	FEB 11	MAR 11	APR 8	MAY 6	JUN 10
	JUL 8	AUG 12	SEP 9	OCT 7	NOV 11	DEC 9

MCW'S TURNING JOURNAL

A monthly publication of Montgomery County Woodturners – A Chapter of the American Association of Woodturners.

Editor: Michael Blake – Phone: 301/589-1815 – Email: mb7298@comcast.net

THE MCW WEBSITE IS <http://montgomerycountywoodturners.org>

MCW CONTACT INFORMATION

OFFICERS

President	Bert Bleckwenn	bableck@gmail.com	301/634-1600
Vice President	Clif Poodry	cpoodry@aol.com	301/530-4501
Program Chair	Gary Guenther	gary.guenther@att.net	301/384-7594
Membership	Bill Autry	bill_autry2004@yahoo.com	301/524-7198
Secretary	Tim Aley	taley16922@aol.com	301/869-6983
Treasurer	Bob Browning	suznbob@verizon.net	301/774-0305
Webmaster	Carl Powell	cmpowell@gmail.com	301/924-6623
Newsletter Editor	Michael Blake	mb7298@comcast.net	301/589-1815

VOLUNTEERS

Web Albums.....	Carl Powell, Gary Guenther	S&T Recording.....	Richard Webster
Mentor Program.....	Donald Couchman	Gallery Photography.....	Hal Burdette
Group Buys.....	Stan Wellborn	Photography Assistant.....	Donald Van Ryk
Lending Library.....	Clif Poodry	Candid Photography.....	Tim Aley
Wood Identification.....	Ed Karch	Candid Photography.....	Stuart Glickman
Exhibit Committee.....	Phil Brown, Hal Burdette, Clif Poodry	Candid Photography.....	Gary Guenther

MEMBER DISCOUNT PROGRAMS

STAN WELLBORN

HARDWOODS, INC. • FREDERICK, MARYLAND – hardwoodsincorporated.com

10% off all turning stock, lumber, moldings, finishes and hardware. 10% off on all Amana router bits and blades that list for \$75.00 and under and 20% off those that list for over \$75.00. 5% off all plywood and veneer products.



ROCKVILLE WOODWORKERS CLUB – woodworkersclub.com

MCW and other club members, remember to support the Woodworkers Club by purchasing turning supplies during our meetings and save 10% on the retail price.



2SAND.COM – 2sand.com or call 800/516-7621

2Sand.com is a coated abrasive specialist focused on fast service and fair prices providing superior sanding discs, sandpaper sheets, and woodturning tools to woodshops. MCW Member Discount is 10% (discount code available in the restricted area of the MCW Website).



CRAFT SUPPLIES USA – woodturnerscatalog.com

Club members can save 10% on all finishes & disc abrasives from Craft Supplies USA. Just mention your club name and save, all year long. You can always see current club specials by clicking on the members login button on their homepage. New 15% specials are updated on the 1st of the month, which can be accessed by using on the link above and going to the club member login located on the lower right portion of the page.



HARTVILLE TOOL CLUB – hartvilletool.com

Members get a 15% discount, with MCW receiving a 3% rebate. If you have not signed up for this program, let Stan Wellborn know you want to do so. He will let Hartville know you are an MCW member and sign you up. Catalogs and ordering instructions are available or at meetings.

