

IN THIS MONTH'S ISSUE

July Meeting Minutes.....	2
Member News.....	3
Financial Report.....	3
Membership Report.....	3
Quince Orchard Library Exhibit.....	4
Call For Entries.....	4
Items Of Interest.....	4
President's Perspective.....	5
Proposed By-Laws Changes.....	6
July Show & Tell.....	7-12
Renwick Gallery Demonstration Volunteers Needed.....	13
July Demonstration.....	14-18
Future Demonstrations/Events.....	19
Lending Library Update.....	20-21
Future Meetings, Contact and Discount Information.....	22



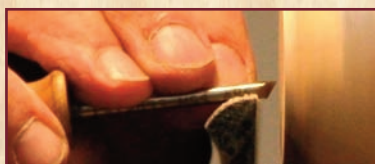
ED KARCH ADMIRES CLIF POODYR'S GOUGE WITH
A RARE & EXOTIC POLYVINYL CHLORIDE HANDLE!



CARL POWELL – PEN MANDREL MODIFICATION



GARY GUENTHER – TOOL HANDLES



J. PAUL FENNELL – CUTTER FOR NARROW GROVES

NEXT MEETING ANNOUNCEMENT

AUGUST 2010 MONTGOMERY COUNTY WOODTURNERS MEETING...

DATE Thursday – August 12, 2010

TIME 6:30 PM – 9:00 PM

LOCATION The Woodworkers Club
4950 Wyaconda Road
Rockville, Maryland 20853
301/984-9033



AGENDA 6:30-7:00 — Bring a chair, if you wish... be sure to wear your name tag... register *Show & Tell* items with Richard Webster... make your bid on *Silent Auction* items... sign out and pay Cliff Poodyr for videos from the club's *Lending Library*.

7:00-7:30 — Business meeting... No regular *Show & Tell*.

7:30-8:45 — **PROGRAM** – Our own version of Tool Tips – *Homemade Tools & Jigs*. Bring your own tools and tips to share with other members.

8:45-9:00 — Pick up and pay for any of your items from the *Silent Auction*... help pack up and clean up the space.

AUGUST PROGRAM – HOMEMADE TOOLS & JIGS

THANKS to Elliot Schantz for this idea – a Bring-Your-Own “Tool Tips” Session. Many of us modify tools, make tools, and create jigs to achieve accurate and repeatable results and to help us work more efficiently. There are innumerable ways to hold objects on a lathe and shape them with tools. That is what the craft aspect of turning is all about. We all have our own sets of procedures on and off the lathe, and a collection of “stuff” we have used in the past to solve particular problems and finish our pieces.

Have you ever wondered what kind of “stuff” other members are making and using? Here's our chance to find out. Bring a favorite tool, jigs, tricks, and products that make turning easier, more accurate, and/or more fun – a favorite gouge grind, sharpening jig, skew shape, handles, jam chucks, special-purpose chucks, sanding and buffing attachments for the lathe, grinder, or drill, hollowing tools, tools to get into hard-to-reach places, lights, drill, materials for filling holes, dyes, sealers, finishes, gloves, safety equipment.

Bring more than one item. We will take turns and go around the room. If you would rather not bring any hardware, just come with a notebook and a camera, because we are going to see some interesting things that will be new and useful to many of us.

At this meeting, we are also going to have a *Swap Meet* along with the *Silent Auction*. There will be a separate table set aside for these items. If you have any stuff laying around you do not want or need any more, bring it and sell it or swap it with another member – or just put it on the *Silent Auction* table for the benefit of the Club.

MICHAEL BLAKE – SPINDLE GOUGE HANDLE



JULY MEETING MINUTES & PHOTOS

TIM ALEY, SECRETARY

PRESIDENT Bert Bleckwenn called the July 2010 meeting to order at 7:06PM and welcomed 25 members and guests. Guests **Stacey France** and her son, **Jake** introduced themselves, as did guests **Steve Devedeo** [SP?]. Jake won a Jet Mini-lathe at the 2008 AAW Symposium in Richmond and has been receiving guidance from his grandfather in Pennsylvania.



GUESTS STACEY & JAKE FRENCH



GUEST STEVE DEVEDEO

Bob Browning collected the demo fee and sold raffle tickets for the unfinished mahogany platter turned by Tom Boley at last month's meeting. The platter was won by Phil Brown.

The silent auction table was filled with Black Cherry and Apple donated by Phil Brown and some anonymously donated Dogwood.



A request came in through our website from a woman in Potomac who wants to arrange a turning session for her sixth-grade son to turn a 31" x 2 5/8" maple baseball bat. She is willing to pay for the materials and turner's time at the their home. Those in attendance were asked to contact Bert Bleckwenn, if interested.

We have a number of excellent new additions to our **Lending Library**.

- Two new DVDs by Lyle Jamieson – *Bowl Basics–The Easy Way* and *Hollow Forms–The Easy Way*.
- An excellent 3–DVD set by Jimmy Clewes.

- Two new DVDs by Mike Mahoney: *Bowl Basics* and *Heirlooms: Making Things That Last*.
- A set of DVDs from AAW's National Symposium in 2009 in Albuquerque. Two technique DVDs feature five symposium demonstrators each and the Instant Gallery and Critique DVDs have some great ideas.
- We continue to add DVDs from our meeting demos each month as well, in case you missed a meeting or want to review a demonstrator's technique.

A motion was made by **Elliot Shantz** and seconded by several members that "Any youth can also become a member at no cost as long as their parents join MCW". It passed unanimously by a show of hands.

The **Montgomery County Agricultural Fair** is set for **August 13th–21st**. Over that 9-day period, MCW will conduct demonstrations on the hand-powered Great Wheel Lathe. Contact Bert if you are interested. Slots are Noon–5:00PM and 5:00PM–7:30PM.

MCW Demonstration Day at the Woodworkers Club is scheduled for **Saturday, October 16th**, from 10:00AM–12:00AM and 1:00PM–3:00PM. We still need volunteers for:

- Two people to setup, cover, and take down the MCW Information Display Table.
- A second person to work with Mark Verna for Lathe Setup/Takedown.
- Someone to do the Sharpening Demo and station setup/takedown.
- Someone to help with the signs.

The variety of items covered the **Show & Tell** table were registered by **Richard Webster**, photographed by **Hal Burdette**, and trucked between tables by **Don Van Ryk**. **Clif Poodry** led the discussion session.



Bert introduced **Warren Carpenter** for his second demonstration for MCW.

MEMBER NEWS

PHIL BROWN/MICHAEL BLAKE

- ❖ **CLIF POODRY** teaches the following classes at the Woodworkers Club in Rockville –
Introduction To The Lathe on Saturday September 4th and Saturday, October 30th.
Beginning Bowl Turning on Saturday August 14th, Saturday September 18th, Saturday October 16th, and Saturday November 30th.
Advanced Bowl Turning on Saturday & Sunday August 28th/29th, Saturday & Sunday October 16th/17th, and Saturday & Sunday November 27th/28th.
For more information see: woodworkersclub.com/practice%20class1.htm or call 301/984-9033



CLIF POODRY

- ❖ **MARK SUPIK & COMPANY**, during the dog days of summer this year, Mark will hold no classes for the month of August. Nancy has just completed their preliminary Fall class schedule. Any additions or changes will be available in this space every month.

Saturday, September 11th – The Right Start

Sunday, September 12th – Bowl Turning

Saturday, October 23rd – Bowl Turning

Sunday October 24th – The Right Start

Saturday, November 20th: The Right Start

Sunday, November 21st – Bowl Turning

Saturday, December 11th – Bowl Turning

Sunday, December 12th – The Right Start

- ❖ **PHIL BROWN's Flare Bowl** featured in AAW's **Maple Medley: An Acer Showcase** exhibit at the Hartford Syposium will be on view in the AAW Gallery of Wood Art in St. Paul, Minnesota from September 12 to December 19, 2010.

You can view a PDF of the Maple Medley catalog at galleryofwoodart.org/upcoming.html. Click VIEW EXHIBIT CATALOG. See Phil's piece on page 14.



PHIL BROWN

DON'T BE SHY – PROMOTE YOURSELF. Let us know about your woodturning activities so they can be included in the newsletter each month. Send your information to **Bert Bleckwenn** at bableck@gmail.com or call 301/634-1600 OR to **Michael Blake** at mb7298@comcast.net or call 301/589-1815.

FINANCIAL REPORT

BOB BROWNING, TREASURER

ACCOUNT BALANCE 06/30/10	\$ 3,489.49
INCOME \$310.00 [DEMO FEES] \$30.00 [MEMB.DUES] \$8.00 [LIBRARY] \$45.00 [SILENT AUCTION]	
\$25.00 [RAFFLE/BOLEY PLATE] \$20.00 [PETTY CASH RETURNED] \$35.00 [DONATION FROM LUMBER SALE]....	\$ 473.00
EXPENSES \$275.00 [DEMONSTRATOR] \$204.99 [SYMPOSIUM VIDEOS].....	(\$ 479.99)
CURRENT ACCOUNT BALANCE 07/31/10	\$ 3,482.50

MEMBERSHIP REPORT

BILL AUTRY, MEMBERSHIP CHAIR

NO new members joined our ranks in June, but Ed and Laquetta Karch were back with us for the first time this year. **Welcome Back.**

QUINCE ORCHARD LIBRARY EXHIBIT

PHIL BROWN

◆ FINAL EXHIBIT OF THE YEAR.

We will exhibit members work at the Quince Orchard Library in Gaithersburg during the month of September. Please lend pieces that will fit on shelves 6.5" wide, either standing on their base or on edge. Bring your pieces to our August 12th meeting for pickup by Phil. After this exhibit closes, all the pieces will be held over and used for the *Exploring Woodturning* demonstration on October 16th at the Woodworkers Club. Pieces can be picked up at the end of the day on the 16th or will be returned at our November 11th meeting.

CALL FOR ENTRIES

PHIL BROWN

◆ CRAFT FORMS 2010.

The 16th International Juried Exhibition of Contemporary Craft, December 3, 2010 – January 23, 2011. Entry Deadline is September 16, 2010, and the entry fee is \$40. Download a prospectus (pdf format) from:

www.craftforms.com

◆ TURNING 25 – A CELEBRATION.

This will be an exhibition of chapter created pieces for the **25th Anniversary AAW Symposium** in 2011 in St. Paul. The exhibit goal is to have every AAW chapter represented and for each chapter to enter a lathe turned work fitting within an 8"-size cube that exemplifies and represents that chapter. While you are lounging on the beach this summer, be thinking of what a joint project, turned by several or many of our members, might look like. A bit more information is available at – www.woodturner.org/sym/sym2011/Exhibit/

ITEMS OF INTEREST

PHIL BROWN

◆ EXHIBIT CATALOG OF INTEREST.

The Teapot exhibit at the AAW Symposium in Hartford, CT, was the fourth in a series of themed exhibits by the AAW Professional Outreach Program. This year invited artists were challenged to make teapots. The results are often witty, sometimes a bit wistful and consistently surprising. A color catalog in PDF format is available by clicking VIEW CATALOG EXHIBIT at www.galleryofwoodart.org/teapotspoons.html. On the final day of the Symposium in Hartford these teapots were auctioned to raise money for the POP. The Lip Service piece by Dixie Biggs, shown on page 5, garnered a lot of interest and sold for \$9,000.

◆ GUIDES FOR EXHIBITING TURNERS.

The Society of North American Goldsmiths (SNAG) has published a series of **Professional Guidelines** that should have a lot of value for exhibiting woodturners. The Guidelines are a series of checklists, procedures, information sources, and forms that can be used by artists. Although SNAG authored them, they are not specific to jewelry. The Guidelines committee appears to have representatives from a variety of perspectives including artists, gallery owners, lawyers, curators, and production people. All the 19 items are available in PDF format, and some also in Word. Look over the list at: www.snagmetalsmith.org/publications/professional_guidelines/

PRESIDENT'S PERSPECTIVE

BERT BLECKWENN

NEW WOODWORKERS CLUB OWNERS

In July, a 4-person partnership purchased the **Woodworkers Club** from Nick Suttora. The four new owners bring a wealth of marketing experience and passion for the business and are in discussions with Woodcraft concerning future changes and improvements.



We thank Nick for his continuous support of MCW these past 3 years which, in my opinion, provided us with a venue that helped make our chapter successful.

Indications are that our good relationship with the Club will continue, especially with our *Exploring Woodturning* demonstration on October 16th.

AAW CHAPTER CHALLENGE FOR THE 2011 AAW 25TH ANNIVERSARY SYMPOSIUM

The American Association of Woodturners will celebrate its 25-year anniversary in 2011 at the St. Paul Symposium. One of the many special events will be an exhibition, *Turning 25—A Celebration*. Each chapter of AAW is encouraged to enter this exhibit. The exhibit goal is to have every AAW chapter represented and for each chapter to enter a lathe-turned work that exemplifies and represents that chapter.

Do MCW members want to participate? If so, we need a volunteer to coordinate the effort and members to collaborate in creating the piece.

DETAILS OF THE AAW CHAPTER CHALLENGE

The chapter can choose its own process for selecting a piece for the show, whether it is collaborative effort, or a chapter juried selection from members' work. Entries for the show will be submitted online on the AAW website. Ground rules are:

- One piece per chapter
- Piece must fit in an 8" cube
- Weight limit is 3 pounds
- Entry fee is \$40
- All entered work must be for sale
- All pieces must remain with the exhibit for any traveled venues after the symposium
- Sales will be shared 70% with the chapter/or artist and 30% with the AAW
- **Entry deadline is February 28, 2011**

The entry fee will help defray the expense of a display setup, return shipping to the buyer or the chapter,

plus a very nice exhibit catalog for each participating chapter that will have a picture and description of each exhibit piece. The exhibit will be displayed in a prominent area at the symposium and each participating chapter will be recognized for their contribution.

With over 325 AAW chapters, this exhibition is likely to be quite large, unique, and an exceptional display of the skills and talent in our chapters. Any questions should be addressed to Warren Carpenter, Exhibitions Committee Chairman.

Information you provide through this application may be edited and used for publicity purposes.

- Chapter Name, City, and State
- Chapter contact person's name and e-mail
- Work creator(s) name(s), e-mail, and phone
- Materials and techniques used
- Relevant story, information, and photographs

Details, including an application, can be found at:

www.woodturner.org/sym/sym2011/Exhibit/

MONTGOMERY COUNTY FAIR TURNING DEMONSTRATIONS – VOLUNTEERS STILL NEEDED

LAST CALL - We still need member team volunteers for as many time slots as possible, especially to bring each time slot up to two members each. **TO VOLUNTEER... CONTACT ME at bableck@gmail.com or 301/634-1600.**

Members who have volunteered so far – Tim Aley, Bert Bleckwenn, Bob Browning, Phil Brown, Mike Colella, Pat McVicker, Carl Powell, and Don Van Ryk.

EXPLORING WOODTURNING DEMO DAY UPDATE

We still need 3-4 more volunteers.

- Sharpening Table/Demo - Need 1-2 volunteers
- Display Gallery - Phil Brown is coordinating, but could use someone to assist him.
- Information Table - Need 1-2 volunteers
- Setup/Takedown - Mark Verna has volunteered, but needs a second volunteer

Don't be left out of what will be a fun event for participating MCW members at the MCW Demo Day!

MCW PARTICIPATION IN THE RENWICK GALLERY EXHIBITION & DEMONSTRATION

Phil Brown is coordinating MCW's participation in this exhibit. Please see him during our August meeting to volunteer for one of MCW's demonstration time slots. [See page 13 for more details.]

Happy Turning! Bert

PROPOSED BY-LAWS CHANGES

BERT BLECKWENN

PRESIDENT EMERITUS

When I became President this year, one of the initial actions I took was to declare Phil Brown our "President Emeritus" in recognition of his leadership and guidance during our first three years of operation. I have found Phil's advice and counsel extremely valuable and believe it helped smooth transition and improve management consistency of the chapter over time.

While this "position" has been informal, it has been turned out to be invaluable. So, I would like to make this position official by modifying our bylaws and adding "President Emeritus" as an official officer with full officer voting rights. We did this for the Webmaster role earlier and this would bring us up to nine official officers. Therefore, I will propose the following MCW By-Laws modification at the August meeting:

Proposal to revise MCW By-Laws by adding the following to Article VII - OFFICERS:

President Emeritus - The most recent past President. Provides advice and counsel to the officers based on past club management experiences.

MCW OUTREACH PROGRAMS

The MCW Officers have been discussing the status of our various outreach programs and the need for more formal procedures to ensure adequate liability coverage for members involved in any outreach efforts on behalf of MCW.

As a result, we have agreed to formally define MCW Outreach Programs, identify and agree to the set of current programs to be classified as MCW Outreach Programs, and request the general MCW membership to approve the modification of the MCW By-Laws to include MCW Outreach Programs as part of our formal structure and commitment.

The initially approved MCW Outreach Programs as agreed to by MCW Officers and the respective program coordinators are:

- A. Warriors-In-Transition Program [Bert Bleckwenn]
- B. Montgomery County Fair Demonstrations [Bert Bleckwenn]
- C. Woodworkers Club Demo Day [Bert Bleckwenn]
- D. Renwick Gallery Demonstrations [Phil Brown]
- E. Montgomery County Library Displays [Phil Brown]
- F. Turning A Bat Workshop [Bert Bleckwenn]

The following is what I will propose for the general MCW membership to vote on at the August meeting as the modification of the MCW By-Laws:

Proposal to revise MCW By-Laws by addition of the following as Article XI – OUTREACH PROGRAMS:

MCW Outreach Programs are formally recognized and sponsored programs within MCW. They are established for the primary purpose of promoting woodturning to individuals and the public through awareness programs, demonstrations, public displays, instructional workshops and other various events. As formally recognized MCW chapter programs, they may receive MCW funding to cover expenses. Participating MCW members who are also AAW members receive AAW liability coverage while conducting or participating in the chapter-sponsored events.

Guidelines for the creation and management of the MCW Outreach Programs are:

1. *The purpose of any workshop, teaching session, demonstration, public display or other nominated event to be declared an MCW Outreach Program is to promote the art and craft of woodturning to individuals and the general public and/or to prototype or develop turning programs that could be expanded by MCW for broader public uses.*
2. *A workshop, teaching session, demonstration, public display or other nominated event must be submitted to MCW for approval as an MCW Outreach Program by one or more MCW members who must also be AAW active members. A nomination will consist of the name, objectives, description and submitter's name who will generally be the proposed program coordinator.*
3. *Approval of a proposed MCW Outreach Program can be granted by a majority approval of the active MCW officers.*
4. *A formal record of all approved workshops, teaching sessions, demonstrations, public displays and other events as an MCW Outreach Program will be recorded by the MCW Secretary as part of the monthly minutes and communicated to MCW membership during the MCW monthly meetings. MCW newsletters and the MCW website will be used to communicate and promote MCW Outreach Programs.*

JULY SHOW & TELL

MICHAEL BLAKE



BOWLS BY TIM ALEY

[TOP-TO-BOTTOM]

8½" x 4½" RIMMED EDGE [PIN OAK]

10" x 5" NATURAL-EDGE [PIN OAK]

8" x 3" WINGED [PIN OAK]

12" x 6" FLARE [CEDAR]



JULY SHOW & TELL

MICHAEL BLAKE

RICHARD WEBSTER 15"x4" BOWL [HONEY LOCUST, WITH TURQUOISE INLACE]



BALLBEARING, SELF-TIGHTENING, PRECISION DRILL CHUCK



Precision engineered and built Drill Bit Chuck based on a German-designed chuck costing over \$200. When used in tail stock, resulting holes are very accurate.

1/2" Chuck accurate from 0" - 1/2" . Morse #2 or #3 taper.
PRICE \$38.00 + SHIPPING.

3/4" Chuck accurate from 3/16" - 3/4" . Morse #2 taper.
PRICE \$43.00 + SHIPPING.

Available from Mike Hare at VM Woodworking in Georgia.

TELEPHONE - 770/434-9080

E-MAIL - vmwoodworking1982@yahoo.com



MICHAEL BLAKE

1/2" - 3/8" DIAMETER X 6" LENGTH DESK PEN
[DIAGONAL CUT WALNUT]



JULY SHOW & TELL

MICHAEL BLAKE

TOM ANKRUM

8" x 21½" PLANT STAND
[CONSTRUCTION-GRADE TWO-BY-FOURS]



MUDDLERS

[CLOCKWISE FROM RIGHT] ➡➡

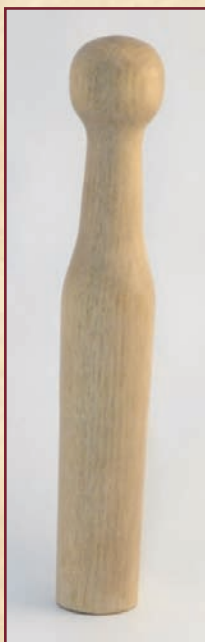
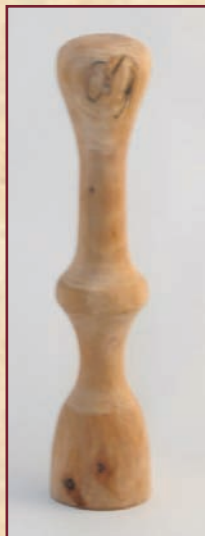
1½" x 11" HICKORY

1½" x 10" PERSIMMON

1½" x 10" BIRCH

1½" x 8" CHERRY

1½" x 8" CHERRY



JULY SHOW & TELL

MICHAEL BLAKE



ELLIOT SCHANTZ 5" x 2½" BOWL
[BLACK CHERRY]



BILL AUTRY 2" x 4½" SEGMENTED, LIDDED
RING BOXES (LIDS ARE ALSO TOPS) [UTILE, CHERRY]



DONALD VAN RYK 4" x 4" SEGMENTED HOLLOW SPHERE
[MAPLE, WITH EBONY & MAPLE BAND, WALNUT & CHERRY BAND, CANARYWOOD & COCOBOLO]



JULY SHOW & TELL

MICHAEL BLAKE



PHIL BROWN

7" x 5"
TEAPOT CREATED BY
ART LIESTMAN AND
PURCHASED AT THE
PROFESSIONAL
OUTREACH
PROGRAM AUCTION AT
AAW SYMPOSIUM.

[BIG LEAF MAPLE BURL,
EBONY, ACRYLICS]



CLIF POODRY

ABOVE 6" x 2½" LIDDED BOX, 4" x 1½" BOWL, 5½" PEN [SHOWN AT THE RIGHT]
[FROM ONE PIECE OF COCOBOLO]

BELOW 0" x 0½" WINGED HOLLOW BOWL [MULBERRY]



JULY SHOW & TELL

MICHAEL BLAKE



JAKE
FRANCE

4" x 2"
NATURAL-EDGE
BOWL
[MAPLE BURL]



1½" x 2"
BOTTLE
STOPPER
[COCOBOLO]



5½"
CARTRIDGE
PENS
[BLOODWOOD]
[ACRYLIC]



2" x 2"
SPINNING
TOP
[MAPLE]



A REVOLUTION IN WOOD – THE BRESLER COLLECTION PHIL BROWN

SEPTEMBER 24, 2010 – JANUARY 30, 2011

**1ST FLOOR, RENWICK GALLERY
1661 PENNSYLVANIA AVENUE, N/W
WASHINGTON, DC 20006**

A Revolution in Wood celebrates the magnificent gift of 66 pieces of turned and carved wood to the Smithsonian American Art Museum by the noted collectors, **Fleur and Charles Bresler**. Works by the country's best-known wood turning artists highlight the growing sophistication of American craft's youngest medium and the expressive capacity of its most organic material.

Masterpieces by the field's pioneers, including David Ellsworth, William Hunter, Mark and Melvin Lindquist, Edward Moulthrop, and Rude Osolnik, demonstrate the extraordinary range of expression achievable on the lathe, the medium's foundational tool. Compelling recent works by Ron Fleming, Michelle Holzapfel, Hugh McKay, Norm Sartorius, Mark Sfirri, and many others reveal the advent of new techniques, including multi-axis turning, the incorporation of secondary materials, and a strong focus on carving. Many works in the exhibition will be on public display for the first time. Nicholas R. Bell, curator at the Renwick Gallery, is organizing the exhibition.

IN ADDITION, Montgomery County Woodturners, Capital Area Woodturners, and Chesapeake Woodturners will have the opportunity to conduct woodturnings demonstrations during this Exhibition.

There will be 3-hour demonstrations at Noon on Tuesdays, 2-hour demos at 2:00PM on the second Saturday of each month, and a 3-hour demo at 11:00AM on December 4th (Family Day).

We are dividing these dates among the three chapters.

The dates for MCW members are:

Saturday – October 9th – 2:00PM–4:00PM

Tuesday – October 26th – 12:00NOON–3:00PM

Tuesday – November 23rd – 12:00NOON–3:00PM

Saturday – January 8th – 2:00PM–4:00PM

Tuesday – January 18th – 12:00NOON–3:00PM

A sign-up sheet will be circulated at our August meeting. If you cannot attend the meeting, please contact Bert Bleckwenn or Phil Brown of your desired demonstration date. You may do the demo solo, or choose to team up with another turner for Tuesdays. For the Saturday demos, there should be a team of two or three turners involved.

Since the Bresler exhibition is primarily turned vessels and hollow forms that may include surface texturing, color, sculpting, lids, finials, or segmented construction, we want



your demonstrations to emphasize vessels, not spindles, pens, bottle stoppers, furniture parts, and other less related turning specialties.

When you sign up, briefly describe what you will demonstrate. These topics will be posted by the Renwick so that the public may choose to attend a session of primary interest.

A Rockwell Model 46 lathe will be set up in the Palm Court, on a low platform with a shield between the lathe and the audience. The lathe has a 6" radius swing from a 1" x 8 tpi spindle, with a 3/4 HP motor. There is a mechanical speed control lever for use while the lathe is running. [The control is somewhat hard to turn to increase speed, but easy to turn to reduce speed.] There will be 6", 12", and 23" tool rests, a knock-out bar, and a tail stock. A portable light will be attached to the lathe. While the lathe is 36 years old, it has had little use in the SAAM cabinet shop and seems in good working order. Also, we hope to have a low speed grinder with a Wolverine sharpening system available.

Demonstrators should bring their own cutting tools, drive and live centers, chucks, eye/face protection, etc., and green wood, since they do not want us to generate dust. Demonstrators should also bring finished and work-in-progress for touching and display on a table. No sales are allowed in the building. Any hand work not done on the lathe could be done on the display table.

**MORE INFORMATION WILL BE AVAILABLE IN THE
SEPTEMBER ISSUE OF THIS NEWSLETTER.**

JULY DEMONSTRATION

MICHAEL BLAKE/GARY NICKERSON

WARREN CARPENTER's reputation as an exceptional turner, an gifted artist, and a instinctive teacher had obviously preceded him at our July meeting.

On one of the hottest days of this unusually hot summer, we had a much better-than-usual turnout. Warren's presentation was about how he inlays slices of a walnut in some of his bowls and how he gets the most out of unusual burls.

Warren is one of the most energetic turners many of us have seen and, even with the constant need to

stop and explain, it was surprising how much he did accomplish in the far too short time frame.

When presenting demos in past newsletters with photos and a narrative, we usually have around 40 shots. But with the speed Warren maintains, we ended up with 56 shots. I decided to present Warren's demo using the numerous photos and captions rather than fewer photos and a narrative.

Thanks to Gary Nickerson for sharing his notes. I hope it works and everyone will like it.



1 AS BERT BLECKWENN ADJUSTS THE FOCUS ON ONE OF OUR CAMERAS, WARREN SHOWS TWO SAMPLES OF PIECES WITH INLAID WALNUT SLICES.



2 WEARING A T-SHIRT WITH JOHN JORDAN'S QUOTE *LIFE'S TOO SHORT TO TURN CRAPPY WOOD*, WARREN'S ENTHUSIASM IS COMPELLING AND INFECTUOUS.



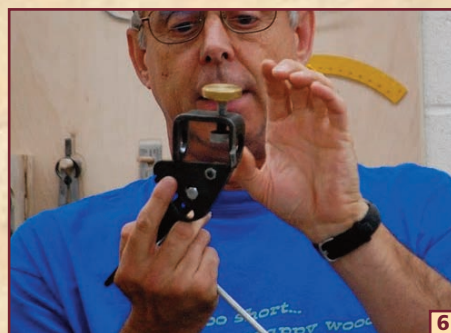
3 THIS IS A STABLE BLANK ROUGH SHAPED 4 MONTHS AGO. [WE DID NOT GET ALL THE WORDS, SOMETHING ABOUT "DOING IT RIGHT, OR" ... "HEADS SQUASHED LIKE MELONS" ...]



4 THIS 1/2"-FLUTE GOUGE WITH DAVID ELLSWORTH'S SWEEP BACK GRIND IS THE TOOL WARREN USES FOR ABOUT 90% OF HIS TURNING.



5 FOR FINE DETAILS AND SHAPING TENONS, WARREN USES A 1/4"-FLUTE GOUGE WITH A STANDARD BOWL GRIND.



6 HE USES A RECENTLY-IMPROVED WOLVERINE SHARPENING JIG FOR HIS STANDARD BOWL-GRIND TOOLS...



7 AND AN ELLSWORTH JIG TO MAINTAIN A CONSISTENT EDGE ON THE ELLSWORTH-GRIND GOUGES.



8 BESIDES A FACE SHIELD, WARREN STRONGLY URGES THE USE OF **HEARING PROTECTION** AND REVEALED HIS TOP SECRET WAY OF CUTTING FLATS ON TOOL HANDLES.



9 WITH A BETTER VIEW, YOU CAN SEE THE BLANK IS MOUNTED WITH A MORSE-TAPER DRIVE CENTER DIRECTLY INTO THE HEADSTOCK AND A REVOLVING... ↓

JULY DEMONSTRATION

MICHAEL BLAKE/GARY NICKERSON



10

CENTER IN THE TAIL STOCK. WHAT IS NOT VISIBLE IS THAT WARREN REMOVES THE CENTER PIN FROM THE CENTER. THIS MAKES IT EASIER TO RE-ORIENT THE...



11

BLANK IF NECESSARY. AS HE BEGAN SHAPING, HE EMPHASIZED THE IMPORTANCE OF CUTTING "DOWN-HILL" INTO THE STRONGER FIBERS OF THE WOOD...



12

FOR CLEANER, SMOOTHER CUTS. THIS ALLOWS HIM TO START SANDING WITH 120-GRIT PAPER. [HE SANDS TO 400-GRIT AND NEVER SKIPS ANY GRITS.]



13

AS HE APPROACHES THE FINAL BASIC SHAPE HE WANTS FOR THIS PIECE, WARREN CUTS A 1/4" DEEP TENON TO HOLD THE PIECE IN A SCROLL CHUCK.



14

WITH A "STRONGHOLD" CHUCK ON THE HEADSTOCK, THE BOWL IS REVERSED AND WARREN BEGINS HOLLOWING THE INSIDE SURFACE.



15

NOTICING A SMALL INCONSISTENCY IN THE OUTSIDE SHAPE, WARREN TURNS THE TOOL REST TO THE SIDE AND...



16

USING A SHEAR SCRAPING CUT WITH THE ELLSWORTH GOUGE, HE TRUES THE OUTSIDE SURFACE.



17

MOVING THE TOOL REST BACK FOR HOLLOWING, WARREN BEGINS WITH HIS RIGHT HAND FAR TO THE RIGHT, STARTS HIS CUT ON THE LEFT SIDE...



18

AND SWEEPS THE TOOL TO THE CENTER. IF YOU FOLLOW THE "FLOW" FROM HERE, TO SHOT #19, THEN TO SHOT #20...



19

YOU CAN EASILY SEE HOW WARREN MAKES THIS FLOWING CUT BY MOVING HIS ENTIRE BODY...



20

NOT JUST HIS HANDS. MANY REFER TO THIS FLOWING MOVEMENT AS THE "TURNERS DANCE". HERE, IT IS EASY TO SEE WHY.



21

WITH A BIT OF RAZZLE-DAZZLE, WARREN SHOWS HOW "RIDING THE BEVEL" MAKES THIS CUT SO EASY, ALL YOU NEED IS ONE HAND ON THE TOOL.

JULY DEMONSTRATION

MICHAEL BLAKE/GARY NICKERSON



22 WARREN REMOVES THE BOWL AND CAREFULLY CHECKS BOTH SURFACES FOR ANY IRREGULARITIES THAT WOULD BETTER BE REMOVED WITH A GOUGE.



23 FIRST, HE USES THE STRONGHOLD CHUCK AS A "JAM" CHUCK, BRINGS THE TAIL STOCK BACK UP. AND WITH HIS $\frac{1}{4}$ " GOUGE, REFINES THE CURVE OF THE FOOT.



24 REVERSING THE BOWL AGAIN, HE USES THE INSIDE EDGE OF THE $\frac{1}{2}$ " GOUGE AND LOWERS THE HANDLE TO SMOOTH THE RIM OF THE BOWL.



25 BEFORE GETTING TO HIS TECHNIQUE FOR INLAYING SLICES OF WALUTS, WARREN SHOWED ANOTHER OF HIS TOP SECRET TECHNIQUES...



26 HE USES A LENGTH OF LAMP CHAIN, HELD AT BOTH ENDS, TO HELP DETERMINE THE INSIDE SHAPE OF HIS BOWLS, DEEP OR SHALLOW...



27 AND EVEN ALMOST FLAT. THIS SIMPLE METHOD PRODUCES NATURAL SHAPES THAT ARE GUARANTEED TO BE GRACEFUL AND PLEASING TO THE EYE.



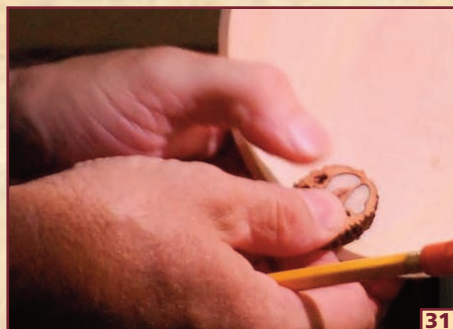
28 BACK TO THE BOWL, WITH A LIGHT DIRECTED TO THE SURFACE, WARREN TAKES VERY LIGHT CUTS TO REMOVE ANY TINY RIDGES REMAINING.



29 THIS "PATENTED" DEVICE... TWO SMALL BLOCKS WITH CURVED FOAM RUBBER PIECES ON EACH END HOLD THE WALNUT...



30 AS HE CUTS SLICES ON A BAND SAW. REPEATING THAT IN CASE SOME MIGHT NOT COMPREHEND... HE CUTS THE SLICES ON A BANDSAW.



31 NOW ARMED WITH A SLICE OF WALNUT AND A SHARP PENCIL...



32 WARREN HOLDS THE WALNUT IN THE LOCATION HE'S CHOSEN ON THE BOWL'S RIM AND TRACES CAREFULLY AROUND THE EDGE.



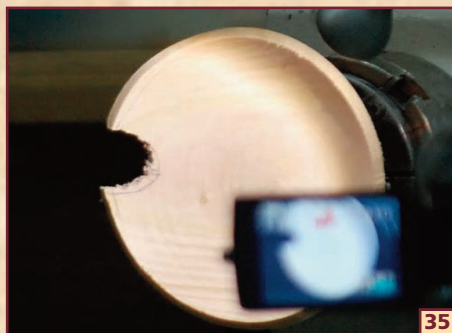
33 USING THE LATHE AS A VISE, WARREN ATTACKS THE UNSUSPECTING RIM WITH A JIG SAW...

JULY DEMONSTRATION

MICHAEL BLAKE/GARY NICKERSON



AND CUTS DOWN AND AROUND HIS MARKS...



UNTIL HE HAS REMOVED A SUFFICIENT AMOUNT OF WOOD FOR PLACEMENT OF THE SLICE.



WARREN POSITIONS THE WALNUT IN THE GAP AND CHECKS FOR FIT. IT DOES NOT HAVE TO BE PERFECT, BUT BIG GAPS WILL CAUSE PROBLEMS.



WHEN SATISFIED WITH THE FIT, WARREN APPLIES TAPE TO THE INSIDE TO HOLD THE SLICE IN PLACE AND TO KEEP THE GLUE FROM RUNNING.



WITH FINE BARK DUST HE'S COLLECTED, WARREN "SPRINKLES" THE DUST ALL AROUND THE EDGES OF THE SLICE.



WARREN CAREFULLY BUILDS UP THE LEVEL OF DUST FILLER TO ENSURE ALL THE GAPS HAVE ENOUGH TO BOND WITH THE EDGES.



WITH A SMALL BOTTLE OF THIN CA GLUE AND A TINY OPENING, WARREN PUTS DROPS OF GLUE AROUND THE EDGES, QUICKLY BUT CAREFULLY.



SANDING THE INSIDE OF THE SLICE FLUSH IS NEXT. WARREN LIKES WAVY-EDGE SANDING DISKS FOR THE INSIDE SURFACE, GOING FROM 80-GRIT TO 400-GRIT.



NEXT, WARREN SANDS THE OUTSIDE SURFACE TO REMOVE THE GLUE/DUST BUILD UP. THIS IS AS FAR AS HE TOOK THIS PIECE, SINCE TIME WAS LIMITED.



WARREN'S OTHER "ASSIGNMENT" FOR THE EVENING WAS TO DISCUSS HOW TO GET THE MOST OUT OF UNUSUAL BURLS... LIKE THE CHERRY BURL ABOVE.



WARREN BROUGHT SEVERAL SAMPLES THAT CLEARLY ILLUSTRATED HOW SHAPES LIKE THIS FLARED-RIM BOWL ABOVE...



OR THIS ELEGANTLY BULB-SHAPED PIECE COULD BE FOUND AND BROUGHT OUT OF A BURL.



JULY DEMONSTRATION

MICHAEL BLAKE/GARY NICKERSON



46 BURLS SOMETIMES ARE LARGE ENOUGH TO GET NESTED SETS LIKE THESE. WARREN ALWAYS TRIES TO MAXIMIZE WHAT HE CAN GET OUT OF A BURL.



47 MOUNTING THIS PRE-CUT PIECE OF CHERRY BURL WITH A 4-PRONG DRIVE CENTER AND LIVE TAIL CENTER WITH THE POINT REMOVED.



48 WARREN USES A PEN LIGHT BEAM TO TRACK OUTER SURFACE CUTS ON IRREGULAR SHAPED BURLS. HE CAN RE-POSITION THE PIECE TO AVOID PROBLEMS.



49 WITH THE AXIS CLEAR IN HIS MIND, WARREN BEGINS TURNING THE OUTSIDE TO CREATE THE BULB SHAPE HE WANTS FOR THIS PIECE.



50 HE DEFINES THE TENON AND THE FOOT FIRST BECAUSE HE WILL USE THOSE TWO SECTIONS TO CUT TO AS HE CREATES THE SHAPE.



51 AS BEFORE, HIS FIRST FEW SHAPING CUTS MOVE OUT FROM THE TENON/FOOT TOWARDS THE RIM.



52 SINCE BURLS MOST OFTEN DO NOT HAVE A GRAIN "DIRECTION" LIKE SIDE- AND END-GRAIN PIECES, YOU DO NOT HAVE TO WORRY ABOUT CUTTING...



53 "DOWNHILL". IN FACT, WARREN TURNED THIS BURL IN THE OPPOSITE DIRECTION FROM THE EARLIER PIECE.



54 AGAIN FOLLOW THE FLOW FROM SHOT #52, TO #53, TO #54, TO #55.



55 THESE 4 STILL SHOTS ARE A SINGLE SWEEPING CUT FROM WHAT WILL BE THE RIM OF THE BOWL TO THE FOOT.



56 RELENTLESSLY, THE CLOCK RAN OUT AND WARREN COULD NOT HOLLOW THIS PIECE. BUT YOU CAN CLEARLY SEE WHAT AN ELEGANT PIECE IT WILL BE.

PHOTOGRAPHS FOR THIS SECTION TAKEN BY TIM ALEY AND HAL BURDETTE. FULL SIZE VERSIONS OF THESE PHOTOGRAPHS CAN BE SEEN ON THE MCW WEBSITE.

FUTURE DEMONSTRATIONS/EVENTS

GARY GUENTHER

♦ September 9th – *Mark Sfirri – An Acknowledged Master of Multi-Axis Turning.*

Mark's unique and instantly recognizable works are in the best museums and collections in the world. We have seen some of his pieces in our field trips. It's going to be really hard to decide what forms to ask Mark to turn from his amazing repertoire of bats, candlesticks, figures, curved handles, etc. Mark was in Washington in April to receive a Distinguished Educator award from the James Renwick Alliance, and we are very pleased and privileged that he will be able to come back to join us in September.

♦ October 7th – *Jim Duxberry – Techniques for making a kaleidoscope.*

Jim will demonstrate turning of centerless pieces with his unique cone jig and apply this technique to the construction of his Traditional Model Kaleidoscope. This approach is adaptable for hollow vessels such as ornaments, bird-houses, or any staved-type cylindrical pieces. Jim is also the inventor of the Resp-O-Rator™ for which he holds two U.S. Patents.

♦ November 11th – *To Be Determined.*

♦ December 9th – *Clif Poodry – Using Jam Chucks To Turn Small Boxes.*

Proficiency in making jam chucks will make you a more confident and productive turner. In the woodturning world, a "box" is a small vessel with a lid, made to hold small items. Box making is an honored tradition and a hot topic now, as evidenced by an extremely lively Special Interest Night session at the 2008 Richmond AAW Symposium. Eliot Feldman did a demo for us on making a box a year and a half ago, but we still don't see many boxes in our S&T. Hopefully this demo will encourage more members to give them a try.

♦ January 6th – *Second Annual Show & Tell With Formal Critiques.*

We had a very positive response to this session last January, so we're going to make it an annual affair. Instead of a demonstration, we will have an extended *Show & Tell* session with a formal critique of each piece by a panel of three selected craft, art, and turning experts. (We will have three new panelists in 2010.) Participants will bring one piece to have it reviewed. The idea is not to submit a perfect piece – rather, the goal is to learn about design, turning, and finishing techniques from the things each of us has made. This is an ideal way to learn how to improve what we are doing, from our fellow turners' experiences, in a friendly and instructive environment. Needless to say, we want as many people as possible to come and join us for this learning opportunity, whether or not you bring a piece to be evaluated. We'll have a sign-up sheet at the December meeting to get an idea of the number of potential participants.

If you have suggestions for future demonstrators, or would consider demonstrating yourself, please contact Gary Guenther by e-mail at <gary.guenther@att.net> or call 301/384-7594.

LENDING LIBRARY UPDATE

CLIF POODRY

THIRTEEN NEW VIDEOS – highlighted in RED below – have been added to the Library since an inventory was published in September 2009. As you can readily see, the sheer size of the Library makes carrying it back and forth to meetings impractical. **We will post this inventory on the website so members who want to use any item can check the inventory, e-mail a note to me, and I will bring the item to the next meeting.** For the modest \$2.00 fee, you can have a video, book, or magazine for an entire month. If a Library item is lost or damaged, the borrowing member will be responsible for the costs of replacement. **Let me know if there is a title you think should be added to the Library.**

VIDEOS

1. Vessels of Illusion, Trent Bosch [DVD]
2. Decorative Utility Bowls, Trent Bosch [DVD]
3. Sculpting Wood: Beyond the Lathe, Trent Bosch [DVD]
4. Two Ways to Make a Bowl, Stuart Batty & Mike Mahoney [DVD]
5. The Skew Chisel, Alan Lacer [DVD]
6. Son of Skew, Alan Lacer [DVD]
7. Projects Along the Woodturning Trail, Alan Lacer (2 DVDs)
8. Turn it On with Jimmy Clewes [DVD]
9. Cindy Drozda's Fabulous Finial Box [DVD]
10. Turning Projects from Scrap, Bob Rosand [DVD]
11. Del Stubbs (Recovery of classic 1985 video tape) [DVD]
12. The International Turning Exchange 2006 [DVD]
13. AAW Woodturning: Fundamentals of Sharpening [DVD]
14. AAW 2003 Symposium Techniques Volume 1 [DVD]
15. AAW 2004 Symposium Techniques Volume 1 [DVD]
16. AAW 2004 Symposium Techniques Volume 2 [DVD]
17. AAW 2004 Symposium Gallery and Critique [DVD]
18. AAW 2005 Symposium Techniques Volume 1 [DVD]
19. AAW 2005 Symposium Techniques Volume 2 [DVD]
20. AAW 2006 Symposium Techniques Volume 1 [DVD]
21. AAW 2006 Symposium Techniques Volume 2 [DVD]
22. AAW 2007 Symposium Techniques Volume 1 [DVD]
23. AAW 2007 Symposium Techniques Volume 2 [DVD]
24. AAW 2007 Symposium Gallery and Critique [DVD]
25. AAW 2008 Symposium Techniques Volume 1 [DVD]
26. AAW 2008 Symposium Techniques Volume 2 [DVD]
27. AAW 2009 Symposium Techniques Volume 1 [DVD]
28. AAW 2009 Symposium Techniques Volume 2 [DVD]
29. AAW 2009 Symposium Instant Gallery and Critique [DVD]
30. Dennis White Teaches Woodturning: Turning Bowls [VHS]
31. Dennis White Teaches Woodturning: Classic Profiles [VHS]
32. Woodturning: A Foundation Course, Keith Rowley [VHS]
33. Bowl Basics: A Workshop With Mike Mahoney [DVD]
34. Heirlooms: Making Things That Last, Mike Mahoney [DVD]
35. Bowl Basics - The Easy Way – Volume 1, Lyle Jamieson [DVD]
36. Bowl Basics - The Easy Way – Volume 2, Lyle Jamieson [DVD]
37. Hollow Forms - The Easy Way, Lyle Jamieson [DVD]
38. Turning It Up With Jimmy Clewes, Volume 1 Set [DVD]
39. Turning It Up With Jimmy Clewes, Volume 2 Set [DVD]
40. Turning It Up With Jimmy Clewes, Volume 3 Set [DVD]
41. Pat O'Brien – Winged Natural-Edge Bowl [DVD]
42. Warren Carpenter – Walnut Slice Inserts & Handling Burls [DVD]

BOOKS

1. *Turning Bowls* by Richard Raffan, Richard Raffan
2. *The Practical Woodturner*, F. Pain
3. *Hand or Simple Turning: Principles & Practice*, John J. Holtzappel
4. *The Principles & Practice of Ornamental or Complex Turning*, John J. Holtzappel
5. *Woodturning in Pictures*, Bruce Boulter
6. *Woodturning Techniques*, W. J. Wooldridge
7. *500 Wood Bowls*, Katherine Duncan-Aimone, Editor
8. *Rude Osolnik: A Life Turning Wood*, Jane Kessler & Dick Burrows
9. *The Art of Turned-Wood Bowls*, Edward Jacobson
10. *Mark Lindquist: Revolutions in Wood*, Robert Hobbs
11. *Enter The World of Lathe-Turned Objects From The Wood Turning Center*
12. *Re:Turning, Works by Stephen Hogbin 1970-1990*
13. *Put A Lid on It: Containing Human Experience*, AAW
14. *Turning 20 – Still Evolving*, AAW
15. *Step Up to the Plate*, AAW
16. *The Woodturners Companion*, Ron Roszkiewicz
17. *The Fine Art of Small-Scale Woodturning*, William R. Duce
18. *Turning Threaded Boxes*, John Swanson
19. *Adventures in Woodturning*, David Springett
20. *Small and Exciting Woodturning Projects*, James A. Jacobson
21. *Woodturning Traditional Folk Toys*, Alan & Gill Bridgewater
22. *The Fundamentals of Woodturning*, Mike Darlow
23. *Turning Wood with Richard Raffan*, Richard Raffan
24. *Woodturning: A Foundation Course*, Keith Rowley
25. *The Art of Turned-wood Bowls*, Edward Jacobson
26. *Wood Turning: From Tree To Table*, Bill Bowers
27. *Fine Woodworking's Woodturning Basics*, David Heim, Editor
28. *Intermediate Woodturning Projects*, The Best From Woodturning Magazine

BACK ISSUES OF AMERICAN WOODTURNER

1. *American Woodturner* – Volumes 1-8, 1986-1993 on CD
2. *American Woodturner* – Volumes 9-16, 1994-2001 on CD
3. *American Woodturner* – Volume 17, 2002 – 4 Issues
4. *American Woodturner* – Volume 18, 2003 – 4 Issues
5. *American Woodturner* – Volume 19, 2004 – 4 Issues
6. *American Woodturner* – Volume 20, 2005 – 4 Issues
7. *American Woodturner* – Volume 21, 2006 – Winter
8. *American Woodturner* – Volume 22, 2007 – Spring

LENDING LIBRARY UPDATE, CONTINUED

CLIF POODRY

GOLD COAST WOODTURNERS VHS TAPES

1. *Hand Thread Chasing*, Alan Batty
2. *Vessels of Illusion*, Trent Bosch
3. *Bowl Turning*, John Jordan
4. *Hollowing*, John Jordan
5. *The Basic Box*, Ray Key
6. *The Finial Box*, Ray Key
7. *Wood Turning With Bonnie Kline*, Bonnie Klein
8. *Turned Boxes with Threaded Lids*, Bonnie Klein
9. *Woodturning: Box Turning and Related Projects*, Bonnie Klein
10. *Turned Boxes*, Richard Raffin
11. *Turned Projects*, Richard Raffin
12. *Woodturning Wizardry*, David Springett
13. *Skill Building*, Mark St. Ledger
14. *Decorative Effects*, Chris Stott
15. *Decorative Effects and Coloring*, Chris Stott
16. *Turning Bowls*, Chris Stott
17. *Bowl Turning with Del Stubbs*, Del Stubbs
18. *Bowl Turning*, Dennis White
19. *Boxes and Goblets*, Dennis White
20. *Twists and Advanced Turning*, Dennis White
21. AAW Who We Are, What We Offer

22. AAW Scenes from 1994 Symposium
23. AAW 1995 Symposium Instant Gallery
24. AAW 1995 Symposium Instant Gallery Critique and Demos
25. AAW 1997 Symposium Instant Gallery
26. AAW 1997 Symposium Techniques
27. AAW 1998 Symposium Gallery and Techniques
28. AAW 1999 Symposium Techniques Volume 1
29. AAW 1999 Symposium Techniques Volume 2
31. AAW 1999 Symposium Gallery Critique
32. AAW 2000 Symposium Gallery Critique
33. AAW 2001 Symposium Gallery Critique & Techniques
34. AAW 2002 Symposium Gallery and Techniques
35. AAW 2003 Symposium Gallery Critique
36. AAW 2003 Symposium Techniques Volume 1
37. AAW 2003 Symposium Techniques Volume 2
38. AAW 2004 Symposium Gallery Critique
39. AAW 2004 Symposium Techniques Volume 1
40. AAW 2004 Symposium Techniques Volume 2
41. Turned Wood 1997 Del Mano Gallery
42. Turned Wood 1999 Del Mano Gallery

E-MAIL REQUESTS TO – Clif Poodry <cpoodry@aol.com>

MCW MEETING SCHEDULE – 2010

Meetings are held on the Thursday before the second Saturday each month, from 7:00PM–9:00PM, at the Woodworkers Club in Rockville, Maryland. See our website for a map to the meeting site.

2010 MEETING DATES	JAN 7	FEB 11	MAR 11	APR 8	MAY 6	JUN 10
	JUL 8	AUG 12	SEP 9	OCT 7	NOV 11	DEC 9

MCW'S TURNING JOURNAL

A monthly publication of Montgomery County Woodturners – A Chapter of the American Association of Woodturners.

Editor: Michael Blake – Phone: 301/589-1815 – Email: mb7298@comcast.net

THE MCW WEBSITE IS <http://montgomerycountywoodturners.org>

MCW CONTACT INFORMATION

OFFICERS

President	Bert Bleckwenn	bableck@gmail.com	301/634-1600
Vice President	Clif Poodry	cpoodry@aol.com	301/530-4501
Program Chair	Gary Guenther	gary.guenther@att.net	301/384-7594
Membership	Bill Autry	bill_autry2004@yahoo.com	301/524-7198
Secretary	Tim Aley	taley16922@aol.com	301/869-6983
Treasurer	Bob Browning	suznbob@verizon.net	301/774-0305
Webmaster	Carl Powell	cmpowell@gmail.com	301/924-6623
Newsletter Editor	Michael Blake	mb7298@comcast.net	301/589-1815

VOLUNTEERS

Web Albums.....	Carl Powell, Gary Guenther	S&T Recording.....	Richard Webster
Mentor Program.....	Donald Couchman	Gallery Photography.....	Hal Burdette
Group Buys.....	Stan Wellborn	Photography Assistant.....	Donald Van Ryk
Lending Library.....	Clif Poodry	Candid Photography.....	Tim Aley
Wood Identification.....	Ed Karch	Candid Photography.....	Stuart Glickman
Exhibit Committee.....	Phil Brown, Hal Burdette, Clif Poodry	Candid Photography.....	Gary Guenther

MEMBER DISCOUNT PROGRAMS

STAN WELLBORN

HARDWOODS, INC. • FREDERICK, MARYLAND – hardwoodsincorporated.com

10% off all turning stock, lumber, moldings, finishes and hardware. 10% off on all Amana router bits and blades that list for \$75.00 and under and 20% off those that list for over \$75.00. 5% off all plywood and veneer products.



ROCKVILLE WOODWORKERS CLUB – woodworkersclub.com

MCW and other club members, remember to support the Woodworkers Club by purchasing turning supplies during our meetings and save 10% on the retail price.



2SAND.COM – 2sand.com or call 800/516-7621

2Sand.com is a coated abrasive specialist focused on fast service and fair prices providing superior sanding discs, sandpaper sheets, and woodturning tools to woodshops. MCW Member Discount is 10% (discount code available in the restricted area of the MCW Website).



CRAFT SUPPLIES USA – woodturnerscatalog.com

Club members can save 10% on all finishes & disc abrasives from Craft Supplies USA. Just mention your club name and save, all year long. You can always see current club specials by clicking on the members login button on their homepage. New 15% specials are updated on the 1st of the month, which can be accessed by using on the link above and going to the club member login located on the lower right portion of the page.



HARTVILLE TOOL CLUB – hartvilletool.com

Members get a 15% discount, with MCW receiving a 3% rebate. If you have not signed up for this program, let Stan Wellborn know you want to do so. He will let Hartville know you are an MCW member and sign you up. Catalogs and ordering instructions are available or at meetings.

