

## IN THIS MONTH'S ISSUE

August Meeting Minutes.....	2
Member News.....	3
Financial Report.....	3
Membership Report.....	3
Quince Orchard Library Exhibit.....	4
Call For Entries.....	4
Renwick Gallery Exhibit Update.....	4
President's Perspective.....	5
Turning A Baseball Bat.....	6
August Show & Tell.....	7-14
Skills Enhancement Program.....	15
August Demonstration.....	16-19
Montgomery County Fair.....	20-22
SPECIAL EVENT NOTICE-PICNIC.....	23
Future Demonstrations/Events.....	23
Future Meetings, Contact and Discount Information.....	24



## NEXT MEETING ANNOUNCEMENT

### SEPTEMBER 2010 MONTGOMERY COUNTY WOODTURNERS MEETING...

**DATE** Thursday – September 9, 2010

**TIME** 6:30 PM – 9:00 PM

**LOCATION** The Woodworkers Club  
4950 Wyaconda Road  
Rockville, Maryland 20853  
301/984-9033



### AGENDA

**PLEASE NOTE**  
**TONIGHT'S**  
**SHOW & TELL**  
**WILL INCLUDE**  
**A CRITIQUE BY**  
**MARK AND**  
**WILL FOLLOW**  
**HIS PLANNED**  
**PROGRAM.**  
**THERE WILL BE**  
**A \$10 FEE FOR**  
**THE DEMO.**

6:30-7:00 — Bring a chair, if you wish... be sure to wear your name tag... register *Show & Tell* items with Richard Webster... make your bid on *Silent Auction* items... sign out and pay Clif Poodry for videos from the club's *Lending Library*.

7:00-7:10 — Business meeting.

7:15-8:30 — **PROGRAM** – World-renowned artist, furniture builder, and professor, Mark Sfirri will showcase his techniques for creating unique, and often whimsical, eccentric forms by demonstrating a “figure” and a candlestick.

8:30-9:00 — *Show & Tell critique by Mark Sfirri.*

## SEPTEMBER PROGRAM – MASTER OF ECCENTRIC, MULTI-AXIS TURNING – MARK SFIRRI

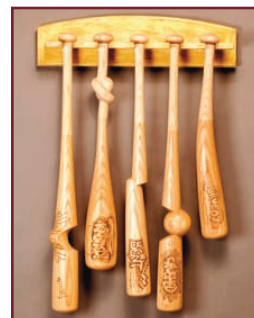
**MARK SFIRRI** is a teacher, furniture-maker, sculptor, and woodturner. Much of his work focuses on lathe-turned objects and shapes. Many of his pieces are turned on several axes allowing him to explore form in a mathematical, yet spontaneous and creative way. Mark often injects humor into his work through form and surface orientation.



Mark continually blurs the line separating woodturning and sculpture. He holds Bachelors and Masters of Fine Arts degrees from Rhode Island School of Design and was heavily influenced by his mentor **Tage Frid**, who encouraged the young Sfirri to use his primary tool – the lathe – in new, creative ways. Mark creates multi-axis *works* which, although they may appear to be carved, are almost entirely turned on the lathe. The resulting pieces combine convex and concave surfaces with curvilinear contours.

Mark has taught at Bucks County Community College since 1981 as an Associate Professor of Fine Woodworking. He has published numerous articles in magazines such as *Fine Woodworking* and *American Woodworker*.

He was named one of only 3 **Distinguished Educators** by the James Renwick Alliance. The Smithsonian Institution's American Art Museum's non-profit alliance provides support for the Renwick Gallery, the nation's showcase of contemporary American craft, where some of Sfirri's work is displayed.





## AUGUST MEETING MINUTES

TIM ALEY, SECRETARY

**BERT BLECKWENN** called the meeting to order at 7:04PM and welcomed 25 members and guests. Former guest **Steve DiBenedetto** re-introduced himself and joined MCW. **Jake** and **Stacey France** returned for a second visit and also joined.

The *Show & Tell* table was filled with a variety of items. The items were checked in by Richard Webster, photographed by Hal Burdette, and ferried between tables by Don Van Ryk.



The **Woodworkers Club** is now under new ownership. The new owners are Chris Johnstone, Amy Bender, Bonnie Lawless and Ralph Duarte.

The **AAW Board of Directors** and **Mary Lacer** have reached an agreement to move forward with Mary filling an advisory role. The proxy fight has been dropped.

The **Virginia Woodturners' Symposium – It's Your Turn 2** – is set for October 23-24 in Fishersville, Virginia (near Waynesboro at I-64 & I-81). Alan Lacer, Tom Boley, and 10 hands-on rotations will be featured.

**Elliot Schantz** offered a lathe and tool box for sale.

**Bert** announced two lathes have become available. A **Powermatic** located at the VisArts shop and Jerry Kaplan's **Woodfast**. MCW would need to spend about \$600 to purchase a tailstock, and another \$200 to \$300 for turning tools and accessories. The plan is to house the lathes at the Woodworkers Club and use them for meetings and new Skill Enhancement workshops. A motion to acquire and refurbish both lathes was made by Elliot Schantz, seconded by Gary Guenther, and carried by unanimous voice vote.

**Bert** reported on two changes to the MCW Chapter Bylaws. The proposed changes were listed in the August newsletter, summarized verbally, and copies were distributed at the meeting.

- ❖ To add a new Officer, **President Emeritus**, defined as the most recent past president. A motion was made by Richard Webster and seconded by Bill Autry. The motion carried by unanimous voice vote.



- ❖ To define MCW Sponsored Programs so participants can get MCW funding, if appropriate, and AAW liability insurance. A motion was made by Bill Autry, seconded by Jack Enders, and carried by unanimous voice vote.
- ❖ To clarify the wording of the MCW **Apprentice Turners Program**. A motion was made by Elliot Schantz and seconded by Gary Guenther. The motion carried by unanimous voice vote.

**Bert** gave a wrap up on the MCW Demonstration at the Montgomery County Agricultural Fair, August 13th-21st.

A progress report on MCW's and The Woodworkers Club's **Exploring Woodturning** demo day, on October 16th, was given by Bert Bleckwenn and Jack Enders. A publicity flyer was displayed by Jack. Volunteers are still needed for:

- ➔ To setup and cover the MCW Information Display Table
- ➔ To work with Mark Verna for Lathe Setup/Takedown
- ➔ For the Sharpening Station Setup/Takedown and Demo
- ➔ To help Jack Enders with the Signs.

**Phil Brown** solicited volunteers for participation on MCW dates at the Renwick Gallery woodturning Exhibition and Demonstration.

**AAW** is seeking entries for the **Chapter Celebration** for the AAW 25th Anniversary Symposium next year in St. Paul. A volunteer to lead this effort was asked for and Tim Aley volunteered to do it.

Several **Silent Auction** tables overflowed with Black Locust, Box Elder, Walnut, Plum, Osage Orange, and Dogwood.



**Gary Guenther** introduced the member-led demonstration of home-made jigs, fixtures, and tools.



## MEMBER NEWS

PHIL BROWN/MICHAEL BLAKE

- ❖ **CLIF POODRY** teaches the following classes at the Woodworkers Club in Rockville –  
**Introduction To The Lathe** on Saturday, October 30th.  
**Beginning Bowl Turning** on Saturday September 18th, Saturday October 16th, and Saturday November 13th.  
**Advanced Bowl Turning** on Saturday & Sunday October 16th/17th, and Saturday & Sunday November 27th/28th.  
For more information see: [woodworkersclub.com/practice%20class1.htm](http://woodworkersclub.com/practice%20class1.htm) or call 301/984-9033



CLIF POODRY

- ❖ **MARK SUPIK & COMPANY** has just announced their preliminary Fall class schedule. Any additions or changes will be available in this space every month or at their website [marksupikco.com/School/schoolcurrent09-1.html](http://marksupikco.com/School/schoolcurrent09-1.html) or call 410/732-8414.

Saturday, September 11th – The Right Start*	Sunday, September 12th – Bowl Turning
Saturday, October 9th – Open Studio [Two practice sessions for students who have taken classes with us. 9:00AM-Noon & 1:00-4:00PM - \$30-per-session. Let us know in advance what you want to work on and we can have materials for you.]	
Saturday, October 23rd – Bowl Turning	Sunday October 24th – The Right Start*
Saturday, November 20th – The Right Start*	Sunday, November 21st – Bowl Turning
Saturday, December 11th – Bowl Turning	Sunday, December 12th – The Right Start*

(\*) For our *The Right Start* spindle classes, let us know ahead of time if you want to make a beer tap, fiber art, or other tools and we will have the materials you need on hand.

Students are provided with safety equipment, an individual lathe and set of tools to use during the workshop. All project materials provided. Class size is limited to five. Cost is \$150 for the all day workshop, \$50 deposit required to hold your space, refundable up to one week prior to class. Class cost for all area AAW Chapter members is discounted 20% to \$120.

- ❖ **PHIL BROWN** has one of his *Maple Burl Flare Bowls* on display at The Luce Foundation Center of the Smithsonian American Art Museum. More details are available on the website at:  
[americanart.si.edu/luce/lightbox.cfm?search\\_artist=&search\\_title=&search\\_acc=&search\\_case=54b&search\\_drawer=&section=&showinfo=all&searchtype=advanced](http://americanart.si.edu/luce/lightbox.cfm?search_artist=&search_title=&search_acc=&search_case=54b&search_drawer=&section=&showinfo=all&searchtype=advanced)



**DON'T BE SHY – PROMOTE YOURSELF.** Let us know about your woodturning activities so they can be included in the newsletter each month. Send your information to **Bert Bleckwenn** at [bableck@gmail.com](mailto:bableck@gmail.com) or call 301/634-1600 OR to **Michael Blake** at [mb7298@comcast.net](mailto:mb7298@comcast.net) or call 301/589-1815.

## FINANCIAL REPORT

BOB BROWNING, TREASURER

ACCOUNT BALANCE 07/31/10 .....	\$ 3,482.50
INCOME \$4.00 [LIBRARY] \$16.00 [SILENT AUCTION].....	\$ 20.00
EXPENSES NONE.....	(\$ 0.00)
CURRENT ACCOUNT BALANCE 08/30/10 .....	\$ 3,502.50

## MEMBERSHIP REPORT

BILL AUTRY, MEMBERSHIP CHAIR

Jake French, his mother Stacey, and Steve DiBenedetto joined us at the August meeting.  
*Welcome To MCW.*



## QUINCE ORCHARD LIBRARY EXHIBIT

PHIL BROWN

### ► FINAL EXHIBIT OF THE YEAR.

Tim Aley, Bill Autry, Phil Brown, Mike Colella, Gary Guenther, David Jacobowitz, Gary Nickerson, Donald Van Ryk, Richard Webster, and Ilya Zavorin lent pieces for the Quince Orchard Public Library display that is up during September. After this exhibit closes, all the pieces will be held over and used for the *Exploring Woodturning* demonstration on October 16th at the Woodworkers Club. Pieces can be picked up at the end of the day on the 16th or will be returned at our November 11th meeting.

## CALL FOR ENTRIES

PHIL BROWN

### ► CRAFT FORMS 2010.

The 16th International Juried Exhibition of Contemporary Craft, December 3, 2010 – January 23, 2011. Entry Deadline is September 16, 2010, and the entry fee is \$40. Download a prospectus (pdf format) from:

[www.craftforms.com](http://www.craftforms.com)

### ► SUGARLOAF CRAFT FESTIVALS 2011.

Woodturners who are interested in exhibiting at any of the Spring 2011 Festivals can apply now. Applications are available for downloading at – [www.sugarloaforcrafts.com](http://www.sugarloaforcrafts.com) Locations and dates shown below.

Chantilly, Virginia – Dulles Expo Center – January 28, 29, 30.

Somerset, New Jersey – Garden State Exhibit Center – March 11, 12, 13.

Oaks, Pennsylvania – Greater Philadelphia Expo Center – March 18, 19, 20.

Hartford, Connecticut – Connecticut Expo Center – March 25, 26, 27.

Gaithersburg, Maryland – Montgomery County Fairgrounds – April 8, 9, 10.

Timonium, Maryland – Maryland State Fairgrounds – April 29, 30, May 1.

## RENWICK GALLERY EXHIBIT UPDATE

PHIL BROWN

**A Revolution in Wood: The Bresler Collection** opens on September 24th at the Renwick Gallery, with round table discussion at noon lead by Nicholas Bell, Curator, with Fleur Bresler, Michelle Holzapfel, Mark Lindquist, and Norm Sartorius.

An exhibition catalog, with an appendix showing all turned wood in the museum collection, will be available for purchase in the Renwick gift shop at \$45 and is now available for pre-order at Amazon.com for \$30. The exhibition continues on view through January 30th.

Wood turning demonstrations will occur at noon on each Tuesday, and at 2:00PM on the second Saturday of each month by volunteers from CAW, MCW, and CW. When completed, a demonstrator schedule will also be posted on the MCW website.

The discussion panelists above create turned work that incorporates carving and texturing with sculptural qualities that we don't normally see on our Show and Tell table. To see their objects held in the Smithsonian collection (all created years ago), click on these links:

[www.americanart.si.edu/collections/search/artwork/results/?num=10&name=Michelle+Holzapfel&title=&keywords=&type=&number=&btnG.x=31&btnG.y=12&btnG=Find](http://www.americanart.si.edu/collections/search/artwork/results/?num=10&name=Michelle+Holzapfel&title=&keywords=&type=&number=&btnG.x=31&btnG.y=12&btnG=Find)

[www.americanart.si.edu/collections/search/artwork/results/?num=10&name=Mark+Lindquist&title=&keywords=&type=&number=&btnG.x=60&btnG.y=11&btnG=Find](http://www.americanart.si.edu/collections/search/artwork/results/?num=10&name=Mark+Lindquist&title=&keywords=&type=&number=&btnG.x=60&btnG.y=11&btnG=Find)

[www.americanart.si.edu/collections/search/artwork/results/?num=10&name=Norm+Sartorius&title=&keywords=&type=&number=&btnG.x=37&btnG.y=2&btnG=Find](http://www.americanart.si.edu/collections/search/artwork/results/?num=10&name=Norm+Sartorius&title=&keywords=&type=&number=&btnG.x=37&btnG.y=2&btnG=Find)

On Wednesday, October 6, 2010, at 12:00PM, collector Fleur Bresler leads a Renwick Gallery talk through *A Revolution in Wood*, sharing the stories and anecdotes she collected along with the artworks in the exhibition. Meet in the Renwick lobby, 1st floor, at noon. This event repeats on December 1st. Details at —

[www.americanart.si.edu/calendar/event.cfm?trumbaEmbed=eventid%3D90499124%26view%3Devent%26ch](http://www.americanart.si.edu/calendar/event.cfm?trumbaEmbed=eventid%3D90499124%26view%3Devent%26ch)

On Wednesday, November 10, 2010, at 12:00PM in the Renwick Gallery 2nd floor, master turner David Ellsworth reveals the lessons he learned turning wood for fifty years. He is one of the artists featured in *A Revolution in Wood*. David will discuss his book, *Ellsworth on Woodturning*. A book signing follows. To see this and other events, scroll down the date list at...

[www.americanart.si.edu/exhibitions/archive/2010/bresler/](http://www.americanart.si.edu/exhibitions/archive/2010/bresler/)

## PRESIDENT'S PERSPECTIVE

BERT BLECKWENN

### Montgomery County Agricultural Fair Demonstrations A Great Success

The Fair demonstrations this year were a very successful. We had a better location that improved traffic and access to electrical power so we could use the Jet Midi-lathe and to highlight the "Then & Now" theme. See the highlights of our demonstration at the Fair on pages 20-22 below. Many thanks to all the MCW members who volunteered to demonstrate with me and make the event a real success.



### Exploring Woodturning – MCW Demo Day – October 16th

With the Fair behind us, I am now turning my focus to completing preparations for *Exploring Woodturning*, our demo day on October 16th at the Woodworkers Club. The publicity effort began with the August Woodworkers Club flyer mailed to all customers and featuring a prominent section highlighting the demo.

Jack Enders developed a flyer to be placed in the September Quince Orchard Library display Phil Brown has set up. We will start placing flyers in other prominent public locations such as libraries and senior centers, so if you have suggestions for additional advertising, please contact Jack Enders.

We still need 3-4 more volunteers. Please contact me if you are willing to help out with any of the following tasks or just to provide additional arms and legs in preparing for and running the Demo Day. We can always use more help.

- Sharpening Table/Demo – need 1-2 volunteers
- Information Table – need 1-2 volunteers
- Setup/Takedown – needs a second volunteer

Don't be left out of what will be a fun event, taking part in *Exploring Woodturning* with MCW members!

### Lathe Acquisition Status For Skills Enhancement Program

Jerry Kaplan has agreed to donate his Woodfast lathe to MCW for use in establishing our *Skill Enhancement Program* at the Woodworkers Club. I anticipate taking receipt of the lathe in late September and we should have it set up for use at *Exploring Woodturning* demo day on October 16th at the Club. We are still awaiting approval from VisArts for the transfer of the Powermatic lathe.

Thanks to Jerry Kaplan for his donation and to Matt Nauman of the Woodworkers Club and the new owners of the Club for their support of our *Skills Enhancement Program*. This should be a winning proposition for all involved. You can find the proposal developed for the Skills Enhancement Program on page 15 below. This proposal provides detailed information about what we hope to achieve.

If you have specific ideas or needs you would like addressed by a Skills Enhancement session, or additional suggestions for the program beyond what is in the proposal, please let me know. Also, if you are interested in acting as the Skills Enhancement Coordinator or as a member of the support team at any level outlined below, please contact me.

I am encouraged by the chance to create this new enhancement to our Club's capabilities and hope many members will be able to take advantage of it.

### Quince Orchard Library Display Runs Through September

Phil Brown did his usual stellar job setting up the display cabinet at the Library for our last public display of 2010. Tim Aley, Bill Autry, Phil Brown, Mike Colella, Gary Guenther, David Jacobowitz, Gary Nickerson, Don Van Ryk, Richard Webster, and Ilya Zavorin provided pieces. Tim Aley took pictures of the display. [BELOW]



Happy Turning! BERT



## TURNING A BASEBALL BAT

BERT BLECKWENN

**I**N JULY, I had the wonderful opportunity to provide woodturning instruction to Scott – an energetic 11-year-old, enthusiastic baseball player. Scott's mother had sent a request to the MCW website asking if someone could help her son make his own baseball bat.

I spent a day-and-a-half with Scott, starting with basic safety instructions, leading to spindle-turning techniques, and ending with several completed turnings, including his own custom maple baseball bat – just like Barry Bonds, the player who made maple bats popular at the professional level.

I first showed him the basics of spindle turning using easy-to-turn poplar blanks. Then Scott turned a series of three trial runs in hard maple so he could become familiar with what it is like to turn a harder wood and progressively improve his turning skills.

The first piece I had Scott turn was a 4", short "fat bat" so he got used to making the basic shapes of the knob, the handle, the taper, the barrel, and the end.

From there, I had him turn a 12" mini-bat for his best friend so Scott could become accustomed to a longer spindle shape and more experience with actual spindle turning.

Finally, we turned our attention to the 36" hard maple blank and got down to the final business of turning Scott's custom, 32" bat. The hard maple blank came from [gonebatty.net](http://gonebatty.net), a great source for quality bat turning blanks.

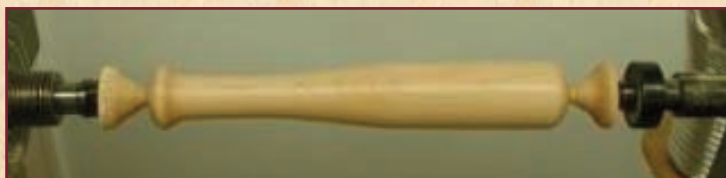
As we neared completion of the final shape, we removed the bat from the lathe and Scott tried a few practice swings. This "test drive" resulted in some refinements to reduce the weight of the bat and thin the handle to fit Scott's grip. The thinning of the handle turned (no pun intended) out to be one of the best benefits to Scott being able to turn his own bat.

We finished up autographing his customized bat and applying a couple of coats of wipe-on poly.

Throughout the process, both Scott and I had a great time together, teacher and student.

Feedback from his mother is that it was a great success with Scott coming away with a great bat he is very proud of and shows off to his teammates, every chance he gets.

Can you just picture that? I sure can!

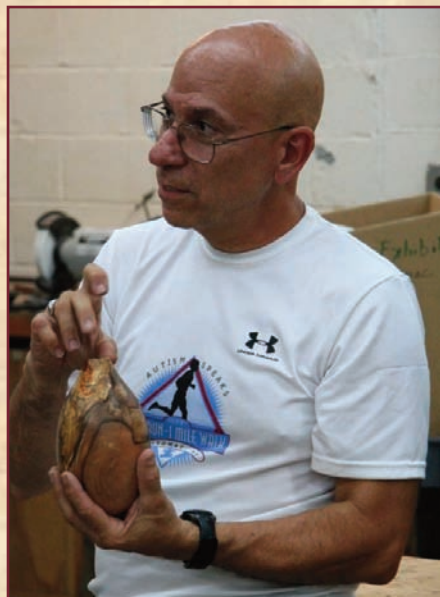




## AUGUST SHOW & TELL

MICHAEL BLAKE

PHOTOGRAPHS BY TIM ALEY & GARY GUENTHER



### MICHAEL COLELLA

4" x 8"

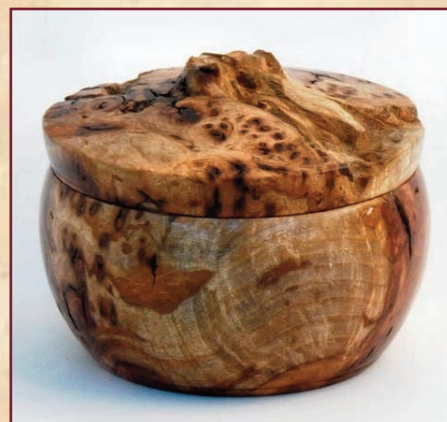
PARTIALLY  
HOLLOWED  
VESSEL

[SPALTED DOGWOOD]

### CLIF POODRY

4½" x 3½"  
LIDDED  
BOWL

[PIGNET HICKORY BURL]



RICHARD WEBSTER 12½" x 9" x 2" PLATTER [OAK]

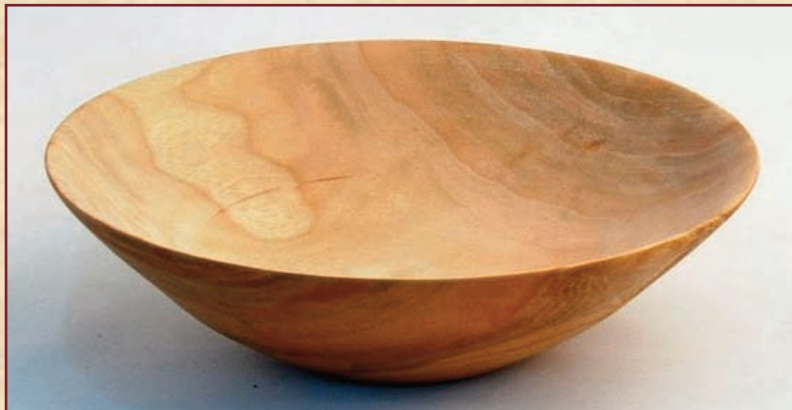




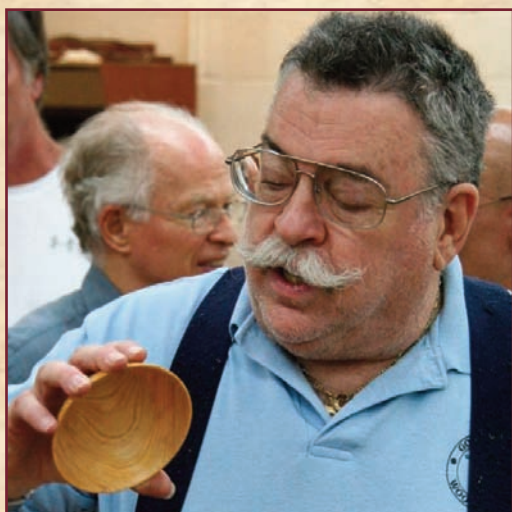
## AUGUST SHOW & TELL

MICHAEL BLAKE

### ELLIOT SCHANTZ



6½" x 2" BOWL [CHERRY]



4½" x 3" BOWL [CEDAR]



4½" x 2½" BEADED-EDGE BOWL [CHERRY]





## AUGUST SHOW & TELL

MICHAEL BLAKE

### GARY NICKERSON



7" x 5" NATURAL-EDGE BOWL [SWEET GUM]



7" x 3" BOWL [SPLATED BEECH]



11" x 5" BOWL [WALNUT]

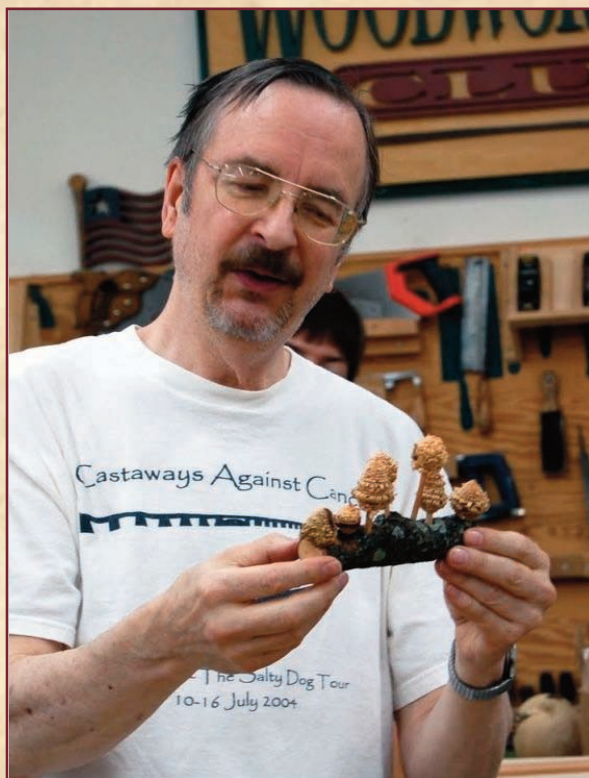


## AUGUST SHOW & TELL

MICHAEL BLAKE



7" x 4" x 2" INTO THE WIND [MAPLE, DOGWOOD]



1" x 2" x 6½" TRIO OF WEEDPOTS [MAPLE]



9" x 3" x 2" MUSHKINS [MAPLE, OAK BARK]

GARY GUENTHER





## AUGUST SHOW & TELL

MICHAEL BLAKE



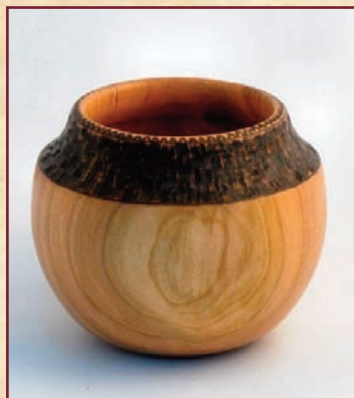
### BILL AUTRY

7" x 15" LIDDED BOX  
WITH FINE DETAIL  
FINIALS & BASE  
[UTILE, MAHOGANY]

3" x 4" SEGMENTED  
LIDDED BOX  
AND READY-TO-TURN  
BLANKS  
[OAK, MAHOGANY]



DESPITE THE PRECISION PREP WORK HE PUT INTO THESE SEGMENTED BLANKS [CUTTING, GLUING, ROUNDING, PARTING], BILL GRACIOUSLY OFFERED TO GIVE THEM TO ANYONE INTERESTED. THE 3 BLANKS WERE SCOOPED UP BY LUCKY MEMBERS IN A MATTER OF SECONDS!



### ED KARCH

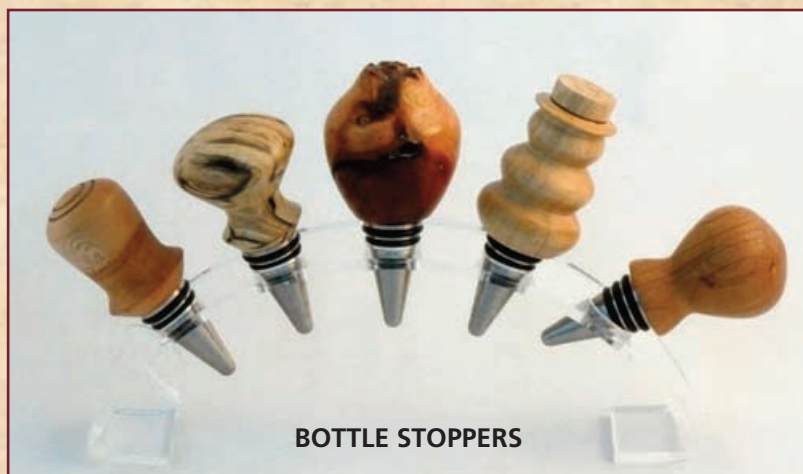
4" x 5" BURN-TEXTURED RIM BOWL [CHERRY]

4½" x 5½" STONE FLOWER BOWL [CARVED & PAINTED CHERRY]



## AUGUST SHOW & TELL

MICHAEL BLAKE



BOTTLE STOPPERS

[SYCAMORE, SPALTED MAPLE, MANZANITA BURL, MAPLE, CHERRY]

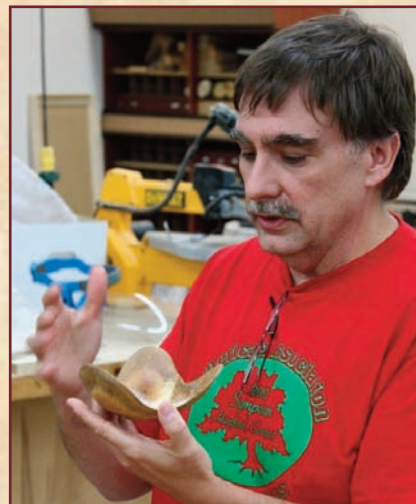


**TIM  
ALEY**

RIGHT  
5" x 4½"  
NATURAL-EDGE BOWL  
[APRICOT]



BELOW 6" x 5" WINGED BOWL [RED OAK CROTCH]





## AUGUST SHOW & TELL

MICHAEL BLAKE

### ILYA ZAVORIN



12" x 2" "CHIP & DIP" PLATTER [SWEET GUM]



RIGHT 10" x 4½" BOWL [WALNUT] — LEFT 9" x 7" BOWL [WALNUT]



11½" x 3½" PLATTER [HONEY LOCUST]





## **AUGUST SHOW & TELL**

**MICHAEL BLAKE**



**13" x 4"**  
**THICK-WALLED**  
**BOWL**

**[RED OAK]**



**DOUG**  
**PEARSON**



**13" x 4"**  
**THICK-WALLED**  
**DOUGHNUT BOWL**

**[RED OAK]**





## PLANS FOR SKILL ENHANCEMENT PROGRAM

BERT BLECKWEEN

**B**ELOW is an outline of our plan to establish and support a woodturning *Skill Enhancement Program* for MCW members at the Woodworkers Club. An agreement-in-principle between MCW and the Woodworkers Club has been made whereby the Woodworkers Club would have free use of two MCW-acquired lathes in return for MCW continued use of the Woodworkers Club for our monthly meetings and turning facilities for scheduled monthly Skill Enhancement sessions. We envision a maximum of 3-to-5 MCW members per session, restricted to the turning facilities and overseen by a small team of MCW Coordinators.

### OBJECTIVES

1. Offer regularly scheduled Skill Enhancement sessions of 1-3 hour duration for MCW members.
2. Provide enhanced lathe facilities at the Woodworkers Club Shop for Woodworkers Club and MCW use.
3. Continue to maintain and improve our mutually beneficial relationship with the Woodworkers Club.
4. Sessions will be geared to specific techniques and are not to be a replacement for or in competition with Woodworkers Club or VisArts turning classes.

### APPROACH

1. Acquire a donated *Woodfast* lathe from Gerry Kaplan.
2. Acquire the *Powermatic* Lathe from VisArts as a donation. (The Woodworkers Club manages the VisArts Woodworking Program and both want to remove the lathe to expand their other woodworking capabilities.) The lathe is missing components that will require replacement at an approximate cost of \$600-\$1,000.
3. Locate both lathes in the turning area of the Woodworkers Club. Electrical services will need to be added to support both lathes.
4. Acquire any accessories (drive centers, chucks, etc.) that are either missing or needed to establish fully functioning lathes.
5. Identify Skill Enhancement *Session Coordinator* to manage the schedule of sessions and to maintain the lathes in proper working order.
6. Establish a small volunteer team of other MCW members who can offer specific skill enhancement session expertise to other members.
7. Develop an initial set of *Skill Enhancement Offerings* and a published schedule of offerings and time slots on the MCW Website in coordination with the Woodworkers Club and their scheduling needs.
8. Promote the Skill Enhancement Program at monthly meetings, in the Newsletters, and on the Website.

9. Periodically review the operation and use of the Skill Enhancement Program and make changes that may be needed.

### POTENTIAL OFFERINGS

1. Wood selection alternatives and tradeoffs.
2. Stock preparation and roughing challenges.
3. Design challenges – proportion & scale.
4. Basic tool use (roughing, spindle, bowl, skew, parting).
5. Sharpening alternatives.
6. Fine-tuning a grinder.
7. Fine-tuning a lathe.
8. Sharpening specific tools (a separate session for each kind of tool).
9. When to hone.
10. Sanding, finishing, and buffing.
11. Dust collection and air filtration.
12. Surface decoration (specific sessions on texturing, carving, piercing, coloring, staining, etc.).
13. When to scrape.
14. Shear scraping.
15. Mastering the skew chisel.
16. The fine point of finials.
17. Cutting a natural edge.
18. Lathe alternatives.
19. Chuck alternatives and mounting alternatives.
20. Jigs and fixtures (sharpening, marking, mounting, decorating).
21. Making the friction fit.
22. Tool holding alternatives.

Specific sessions could also be used for exploring a technique recently demonstrated at a previous MCW meeting while there is still excitement and interest.

### SESSION COORDINATORS

Yet to be decided/designated.

### FUNDING

Our membership has already approved the funding for the replacement parts for the Powermatic lathe and any needed accessories for both of the donated lathes.

The membership has already embraced and approved a Skill Enhancement Program as a valuable addition to our capabilities.

### NON-PROFIT STATUS

MCW leadership is continuing to investigate the feasibility of applying for non-profit status with a target completion date of 12/31/10.



## AUGUST DEMONSTRATION

MICHAEL BLAKE/GARY GUENTHER

**A**T OUR August meeting "demonstration", 16 members braved the hideous heat to bring their favorite and most useful tools, jigs, and tips to share. To say it was a significant surprise is no paltry exaggeration. To cover everything would have taken about 14 pages. So the decision was made to choose one item from each member and feature them on this and the 3 following pages. For those of us who attended the meeting, it was a very useful learning experience. For those who missed the meeting, you missed a unusual opportunity.

PHOTOGRAPHS BY TIM ALEY & GARY GUENTHER



**TERRY LAMB** BROUGHT THE FIRST FOUR TOOLS HIS BROTHER PETER INSISTED TERRY HAD TO MAKE WHEN HE FINALLY DECIDED TO START WOODTURNING.



**CLIF POODRY** BROUGHT THE OFF-CENTER CHUCK HE USES TO MAKE JEWELRY ITEMS SUCH AS EARRINGS AND NECKLACE PENDANTS.



**TIM ALEY** BROUGHT A LARGE "MODULAR FACEPLATE SYSTEM" [OFTEN CALLED A DONUT CHUCK] MADE BY HIS FATHER-IN-LAW, MCW MEMBER DON COUCHMAN, TO FINISH THE BOTTOMS OF BOWLS, WITHOUT IMPEDIMENT.



**BILL AUTRY** WAS RECENTLY HAD TO MAKE 24 MATCHING NAPKIN RINGS. AFTER TURNING A SPINDLE AND PARTING IT INTO SECTIONS, THIS IS THE JIG HE DESIGNED TO TURN THE RINGS, ACCURATELY AND QUICKLY, WITHOUT A CHUCK.





## AUGUST DEMONSTRATION

MICHAEL BLAKE/GARY GUENTHER



**GARY GUENTHER** BROUGHT A BENT HOLLOWING TOOL MOUNTED WITH AN "OUTRIGGER" OR "TORQUE ARRESTOR". THIS ONE WAS MADE BY C.A. SAVOY. THIS IS AN INEXPENSIVE, BUT VERY SECURE, METHOD FOR STABLE, COMFORTABLE, AND SAFE BLIND HOLLOWING.



**BERT BLECKWENN** BROUGHT A SCREW CHUCK, BASED ON A DESIGN BY AL STIRT. IT HAS TWO ADJUSTABLE POINTS ON THE EDGE, WHICH ALLOW MINOR REPOSITIONING OF A BLANK OR A ROUGH-TURNED BOWL TO ALLOW FOR THE OPTIMUM GRAIN PATTERN IN THE BOTTOM OF THE BOWL.



EVER INVENTIVE, **ED KARCH** BROUGHT HIS STAND FOR HOLDING FLEXIBLE CORD TOOLS LIKE THIS DREMEL. IN THIS SHOT A BAMBOO SHAFT PORTION OF THE STAND IS SEEN AT THE RIGHT... WHAT IS NOT VISIBLE IS A LEG/WHEEL SECTION OF A DESK CHAIR INSERTED IN THE END OF THE BAMBOO POLE. IN THE TOOL, IS CUTOFF WHEEL SHAFT WITH THE SCREW REMOVED SO HE CAN AFFIX TINY PIECES OF SANDPAPER FOR GETTING INTO VERY SMALL PLACES.



**MICHAEL BLAKE** BROUGHT THIS WOODCUT SPINDLE GOUGE. THE BLADE IS MADE IN NEW ZEALAND AND HAS A SOLID SHAFT, BUT THE FINAL 2" ARE A REPLACEABLE CUTTING TIP. THE TOOL IS VERY STABLE AND CAME WITH A "SCARY-SHARP" CUTTING EDGE. THE CUTTING EDGE IS ALSO RADICALLY SWEPT-BACK, SO IT CUTS SMOOTHLY WITH LITTLE EFFORT. THE JERRY GLASER-INSPIRED OCTAGON HANDLE WAS MADE FROM LIGHTLY SPALTED WHITE OAK.





## AUGUST DEMONSTRATION

MICHAEL BLAKE/GARY GUENTHER



NEW MEMBER **STEVE DiBENEDETTO** MADE HIS OWN JIG OUT OF PLYWOOD TO MIMIC A WOLVERINE SYSTEM AND BROUGHT IT IN, MINUS THE GRINDER. THE 2 NUTS & BOLTS IN THE MIDDLE ARE WHAT HOLD THE GRINDER IN PLACE.



**MICHAEL COLELLA** SHOWED A ROUGHING TOOL, MADE FROM 5/8" BAR WITH 1/4" TOOL STEEL BIT IN A TRENT BOSCH-SIGNATURE ALUMINUM HANDLE.



**ELLIOT SCHANTZ** BROUGHT SEVERAL INTRIGUING SHOP-MADE TOOLS, BUT THE MOST AMBITIOUS AND IMPRESSIVE WAS THIS LARGE REAR HOLLOWING BAR STABILIZER, PATTERNED AFTER THE LYLE JAMIESON MODEL. ELLIOT AND A FRIEND MADE THIS TOOL AT THE LEISURE WORLD WOODWORKING SHOP.



**JACK ENDERS** BROUGHT A SMALL TOOL FOR HOLLOWING IN TIGHT AREAS... THE CUTTING SECTION MADE FROM A 8-PENNY NAIL, BENT, AND SHARPENED BY HAND. ON THE OTHER END OF THE SCALE, JACK BROUGHT A CURVED-END SCRAPER MADE FROM A MASSIVE PIECE OF FLAT, 1/4" x 1 1/4" COLD-ROLLED STEEL WITH ONE BEVELED "TIP". EFFECTIVE FOR FINISHING THE BOTTOM OF BOWLS, WITH ABSOLUTELY NO CHATTER AND BIG ENOUGH TO OUTLAST US ALL.





## AUGUST DEMONSTRATION

MICHAEL BLAKE/GARY GUENTHER



**PHIL BROWN** SHOWS A CONE-SHAPED CHUCK FOR HOLDING A DEEP VESSEL, WITH NO PRESSURE ON THE RIM, WHILE REMOVING THE SHOULDER AND CHUCK MARKS AND TOUCHING UP THE BOTTOM-RESTING SURFACE. THE PADDED CENTERING RING HOLDS THE RIM IN PLACE. TALL VESSELS WITH NARROW BASES MAY ALSO NEED AN INTERNAL SUPPORT.



**ILYA ZAVORIN** BROUGHT A CAN OF CLAPHAM'S SALAD BOWL FINISH, A SOFT MIXTURE OF BEESWAX AND MINERAL OIL. IT IS EASY TO APPLY WITH A PIECE OF LINT-FREE CLOTH, FAST RUBBING BY HAND INTO THE WOOD, FOLLOWED BY VIGOROUS BRUSHING WITH A NATURAL-HAIR SHOE BRUSH. SEVERAL COATS MAY BE APPLIED. THE RESULT IS VERY NICE MATTE FINISH.



**GARY NICKERSON** MADE A LEVELED JIG FOR USE WITH AN ELLSWORTH SHARPENING JIG AND THE ELLSWORTH SIGNATURE BOWL GOUGE. THE JIG MAKES IT EASY TO SET HIS GRINDING WHEEL 7" FROM THE NOTCH AND 4" HIGH. HE ALSO BROUGHT A PHOTOGRAPH OF HIS GRINDER SET UP TO SHOW HOW THE JIG WORKS.



**CARL POWELL** BROUGHT A  $\frac{5}{16}$ " TRI-POINT TOOL IN A HANDLE(?) MADE LIKE A COLLET CHUCK, WITH A HOSE CLAMP. HE ALSO SHOWED TWO  $\frac{5}{16}$ " NUTS, DRILLED TO ACCEPT A  $\frac{5}{16}$ " BIT AND TAPPED FOR SET SCREWS TO HOLD IT IN PLACE TO GRIND THE ANGLES OF THE TRI-POINT TOOL PRECISELY 120° APART. [EDITORIAL COMMENTARY – APPARENTLY CARL SPENT SO MUCH TIME MAKING THIS STRANGE CONTRAPTION HE DID NOT HAVE TIME TO MAKE A REAL HANDLE.]



## MONTGOMERY COUNTY AGRICULTURAL FAIR

BERT BLECKWENN

**T**HIS was another good year at the Montgomery County Agricultural Fair for MCW. We had a much better location on the main walkway of the Old Timer's area. With access to electricity, we were able to also set up a Jet Midi-lathe along side the Great Wheel Lathe and use a theme of "Then and Now" to contrast technologies. Young and old enjoyed seeing both lathes in action.

Phil Brown, Pat McVicker, Carl Powell, Don Van Ryk, Michael Colella, Tim Aley, and Bob Browning helped man the booth over the 7-day run. We were open from Sunday to the following Saturday from 10:00AM to 6:00PM. We were rained-out on Wednesday, but it turned out to be a welcomed one day break for me.

We were able to demonstrate turning a wide variety of pieces and hand out MCW brochures and Woodworkers Club flyers encouraging participation in both organizations. We turned tops, pens, snowmen, mushrooms, bowl blanks, handle blanks for the blacksmiths, garden fence finials, and much needed new handles for the whistle of the Fair's large steam engine.

One of the highlights of the week for me was Tim Aley's "snowmen". I got a lot of mileage with passersby telling everyone that we turn snowmen to cool off!

Mushrooms turned from green Cherry branches also proved to be a crowd pleaser as 6 foot ribbons of wood came off the gouge and were sprinkled onto the youngsters watching. Pat McVicker's turning of large exterior finials in cedar was an eye-catcher as well.

Another highlight was collaborating with the blacksmith demonstrators. We provided them with a variety of handles for their forged tools. I intend to discuss other ways we can work with the blacksmiths next year.

We were visited by Matt Nauman, Manager of the Woodworkers Club and Chris Johnstone, one of the new owners. They both had a great time using the lathes and seeing the level of activity at the fair. We talked about teaming up next year to demonstrate woodworking hand tools. We got very positive feedback from the Old Timers Co-chairmen and were encouraged to come back.

Bob Browning and I are discussing building a pole lathe and/or a treadle lathe to continue the "Then and Now" theme for 2011. If we could combine this with traditional hand tool demonstrations, more collaboration with the blacksmiths, and continuing to improve our location and facilities setup, we should have even more success. Don Van Ryk had some great suggestions for improving our efforts for next year as well.

Many thanks to Mark Verna for providing the fresh oak and hickory for making up the billets. Thanks to Chris Johnstone and Terry Lamb for the loan of tents.



PHIL BROWN, BERT BLECKWENN, AND MICHAEL COLELLA AT THE "BOOTH".



BERT AND THE PAPARAZZI. AH, THE TRIALS AND TRAVAILS OF STARDOM!



THIS IS ONE OF THOSE RARE PICTURES WORTH-A-THOUSAND-WORDS. SORRY TO HAVE CUT BERT OUT, BUT – LOOK CLOSELY AT THIS YOUNG FELLOW'S FACE – FULL OF THE WONDER, INNOCENCE, CURIOSITY, AND AMAZEMENT ONLY A CHILD CAN SHOW.

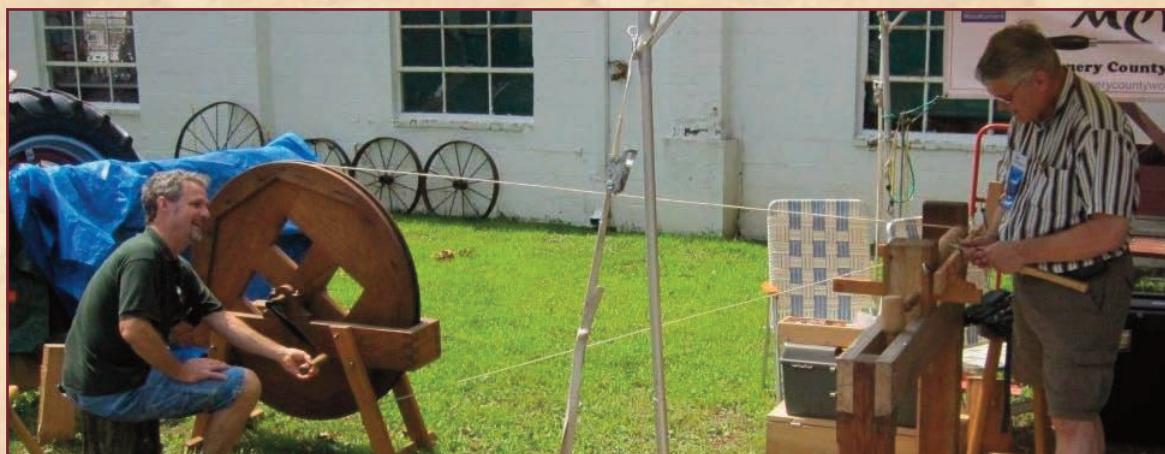


BERT MAKES SURE MICHAEL DOES EVERYTHING RIGHT SO THIS FAN WILL NOT GO AWAY DISAPPOINTED.



## MONTGOMERY COUNTY AGRICULTURAL FAIR

BERT BLECKWENN



PHOTOS FROM THE FAIR  
PROVIDED BY...

TIM ALEY  
BERT BLECKWENN  
BOB BROWNING  
MICHAEL COLELLA  
STUART GLICKMAN  
CHRIS JOHNSTONE

CHRIS JOHNSTONE, ONE OF THE NEW OWNERS OF THE WOODWORKERS CLUB, & BERT TAKE TURNS ON THE GREAT WHEEL & AT THE TURNING END.



PHIL BROWN ROUGHING A SPALTED HOLLY BOWL.



DON VAN RYK TURNING A PEN.



MICHAEL COLELLA PROVIDING INSTRUCTION.



## MONTGOMERY COUNTY AGRICULTURAL FAIR

BERT BLECKWENN



BLACKSMITH BOB MORRIS WITH A COMPLETED FIREPLACE BROOM WITH HIS FORGED IRON, TWISTED ROD, BERT'S WALNUT HANDLE, AND HAND-WOVEN CORN HUSKS.



ANOTHER COMPLETED PIECE WITH A TWISTED ROD BY BOB MORRIS AND BERT'S WALNUT HANDLE – A HOOK FOR TURNING BACON – "HUGEMONGOUS", MASSIVE PIECES OF BACON – AS IT IS FRYING.



ASSORTMENT OF 4" AND 5" TOOL HANDLES MADE FOR THE BLACKSMITHS OUT OF HICKORY, WALNUT, AND CHERRY.



NEW 18" HANDLES TURNED FROM ASH TO REPLACE THE WORN OUT BROOMSTICK HANDLES ON THE STEAM WHISTLES OF THE FAIR'S LARGE STEAM ENGINE.



## SPECIAL EVENT NOTICE – ANNUAL FALL PICNIC – OCTOBER 2<sup>ND</sup>

Sue Ann & Michael Colella have once again graciously *volunteered* to host our annual fall picnic in their fantasyland backyard. Hot Dogs, Hamburgers, and Italian Sausage, breads, condiments, and drinks will be provided. Salads, fruits, veggies, dips, and deserts are the responsibility of members. Please RSVP at 301/942-6850 so we will know how many are attending and so we will not have 10 pans of brownies, when 6 would do. More details coming soon.

## FUTURE DEMONSTRATIONS/EVENTS

GARY GUENTHER

### ♦ October 7th – Jim Duxbury – Techniques for making a kaleidoscope.

Jim will demonstrate turning of centerless pieces with his unique cone jig and apply this technique to the construction of his Traditional Model Kaleidoscope. This approach is adaptable for hollow vessels such as ornaments, birdhouses, or any staved-type cylindrical pieces. Jim is also the inventor of the Resp-O-Rator™ for which he holds two U.S. Patents.



### ♦ November 11th – Robert Rosand – Holiday Tree Ornaments

Robert Rosand began working with wood as a child and now, for well over 20 years has been woodturner, teacher, demonstrator, and writer on the subject of his craft. Bob has served as Vice President and on the Board of Directors for the American Association of Woodturners. He has demonstrated for numerous local AAW chapters and at several national AAW symposiums. He was the featured demonstrator at the 20th Annual National Symposium in Overland Park, Kansas. His works are in private collections throughout the United States, Europe, and Japan. A Christmas tree ornament turned by Robert and painted by his wife Susan was selected to be placed on one of the White House Christmas trees. They have been married for over 30 years and often combine their talents on a variety of pieces.



### ♦ December 9th – Clif Poodry – Using Jam Chucks To Turn Small Boxes.

Proficiency in making jam chucks will make you a more confident and productive turner. In the woodturning world, a “box” is a small vessel with a lid, made to hold small items. Box making is an honored tradition and a hot topic now, as evidenced by an extremely lively Special Interest Night session at the 2008 Richmond AAW Symposium. Eliot Feldman did a demo for us on making a box a year and a half ago, but we still don’t see many boxes in our S&T. Hopefully, this demo will encourage more members to give them a try.



### ♦ January 6th – Second Annual Show & Tell With Formal Critiques.

We had a very positive response to this session last January, so we’re going to make it an annual affair. Instead of a demonstration, we will have an extended Show & Tell session with a formal critique of each piece by a panel of three selected craft, art, and turning experts. (We will have three new panelists in 2010.) Participants will bring one piece to have it reviewed. The idea is not to submit a perfect piece – rather, the goal is to learn about design, turning, and finishing techniques from the things each of us has made. This is an ideal way to learn how to improve what we are doing, from our fellow turners’ experiences, in a friendly and instructive environment. Needless to say, we want as many people as possible to come and join us for this learning opportunity, whether or not you bring a piece to be evaluated. We’ll have a sign-up sheet at the December meeting to get an idea of the number of potential participants.

**If you have suggestions for future demonstrators, or would consider demonstrating yourself, please contact Gary Guenther by e-mail at <gary.guenther@att.net> or call 301/384-7594.**



## MCW MEETING SCHEDULE - 2010

Meetings are held on the Thursday before the second Saturday each month, from 7:00PM-9:00PM, at the Woodworkers Club in Rockville, Maryland. See our website for a map to the meeting site.

<b>2010 MEETING DATES</b>	<b>JAN 7</b>	<b>FEB 11</b>	<b>MAR 11</b>	<b>APR 8</b>	<b>MAY 6</b>	<b>JUN 10</b>
	<b>JUL 8</b>	<b>AUG 12</b>	<b>{ SEP 9 }</b>	<b>OCT 7</b>	<b>NOV 11</b>	<b>DEC 9</b>

## MCW'S TURNING JOURNAL

A monthly publication of Montgomery County Woodturners - A Chapter of the American Association of Woodturners.

Editor: Michael Blake - Phone: 301/589-1815 - Email: mb7298@comcast.net

**THE MCW WEBSITE IS** <http://montgomerycountywoodturners.org>

## CONTACT INFORMATION - OFFICERS & VOLUNTEERS

President.....	Bert Bleckwenn.....	bableck@gmail.com.....	301/634-1600
Vice President.....	Clif Poodry.....	cpoodry@aol.com.....	301/530-4501
Program Chair.....	Gary Guenther.....	gary.guenther@att.net.....	301/384-7594
Membership.....	Bill Autry.....	bill_autry2004@yahoo.com.....	301/524-7198
Secretary.....	Tim Aley.....	taley16922@aol.com.....	301/869-6983
Treasurer.....	Bob Browning.....	suznbob@verizon.net.....	301/774-0305
Webmaster.....	Carl Powell.....	cmpowell@gmail.com.....	301/924-6623
Newsletter Editor.....	Michael Blake.....	mb7298@comcast.net.....	301/589-1815
Web Albums.....	Carl Powell, Gary Guenther	Show & Tell Recording.....	Richard Webster
Mentor Program.....	Donald Couchman	Gallery Photography.....	Hal Burdette
Group Buys.....	Stan Wellborn	Photography Assistant.....	Donald Van Ryk
Lending Library.....	Clif Poodry	Candid Photography.....	Tim Aley
Wood Identification.....	Ed Karch	Candid Photography.....	Stuart Glickman
Exhibit Committee.....	Phil Brown, Hal Burdette, Clif Poodry	Candid Photography.....	Gary Guenther

## MEMBER DISCOUNT PROGRAMS

**STAN WELLBORN**

### EXOTIC LUMBER, INC. • GAITHERSBURG, MARYLAND - [exoticlumberinc.com](http://exoticlumberinc.com)

With over 130 species in stock, Exotic Lumber has one of the widest selections available on the East Coast. We offer a 10% discount to MCW members. We have warehouse locations in Gaithersburg and Annapolis, where you are welcome to select from our extensive selection of turning blocks.



### HARDWOODS, INC. • FREDERICK, MARYLAND - [hardwoodsincorporated.com](http://hardwoodsincorporated.com)

10% off all turning stock, lumber, moldings, finishes and hardware. 10% off on all Amana router bits and blades that list for \$75.00 and under and 20% off those that list for over \$75.00. 5% off all plywood and veneer products.



### 2SAND.COM - [2sand.com](http://2sand.com) or call 800/516-7621

2Sand.com is a coated abrasive specialist focused on fast service and fair prices providing superior sanding discs, sandpaper sheets, and woodturning tools to woodshops. MCW Member Discount is 10% (discount code available in the restricted area of the MCW Website).



### ROCKVILLE WOODWORKERS CLUB - [woodworkersclub.com](http://woodworkersclub.com)

MCW and other club members, remember to support the Woodworkers Club by purchasing turning supplies during our meetings and save 10% on the retail price.



### CRAFT SUPPLIES USA - [woodturnerscatalog.com](http://woodturnerscatalog.com)

Club members can save 10% on all finishes & disc abrasives from Craft Supplies USA.

Just mention your club name and save, all year long. You can always see current club specials by clicking on the members login button on their homepage. New 15% specials are updated on the 1st of the month, which can be accessed by using on the link above and going to the club member login located on the lower right portion of the page.



### HARTVILLE TOOL CLUB - [hartvilletool.com](http://hartvilletool.com)

Members get a 15% discount, with MCW receiving a 3% rebate. If you have not signed up for this program, let Stan Wellborn know you want to do so. He will let Hartville know you are an MCW member and sign you up. Catalogs and ordering instructions are available or at meetings.

