

## IN THIS MONTH'S ISSUE

March Meeting Minutes.....	2
Member News.....	3
Financial Report.....	3
Membership Report.....	3
Sandy Spring Museum Show.....	4
Silver Spring Library Exhibit.....	5
Lathes For Sale.....	5
President's Perspective.....	6
March Show & Tell.....	7-11
March Demo Highlights.....	12
Future Demonstrations/Events.....	13
Future Meetings, Contact and Discount Information.....	14



PLEASE SEE PAGE 13 FOR MORE DETAILS  
ABOUT THIS EXTRAORDINARY HISTORIC PIECE



## NEXT MEETING ANNOUNCEMENT

### APRIL 2011 MONTGOMERY COUNTY WOODTURNERS MEETING...

**DATE** Thursday – April 7th

**TIME** 6:30 PM – 9:00 PM

**LOCATION** The Woodworkers Club  
4950 Wyaconda Road – Rockville – 20853  
301/984-9033



**AGENDA** 6:30-7:00 — Bring a chair, if you wish... be sure to wear your name tag... meet and greet other members... register your items for *Show & Tell* with Richard Webster... make your bid on *Silent Auction* items... sign out and pay Clif Poodry for videos from the club's *Lending Library*.

7:00-7:30 — Business meeting... *Show & Tell*.

7:30-8:45 — **PROGRAM** – Allen Alexopoulos will demonstrate how to prep, mount, and turn a Banksia Pod hollow form.

8:45-9:00 — Pick up and pay for any of your items from the *Silent Auction*... help pack up and clean up the space.

## APRIL PROGRAM – ALLEN ALEXOPOULOS BANKSIA POD HOLLOW FORM, PEDESTAL & FINIAL

**A**LLEN has been creating custom turned art since 2001 in his shop in Annapolis. He is a member of the American Association of Woodturners, the Maryland Federation of Art, and the Chesapeake Woodturners.

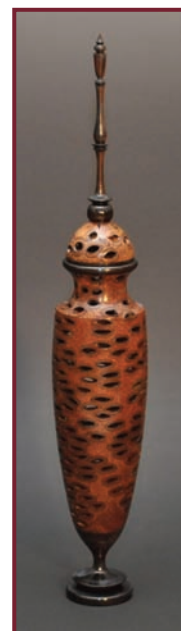
He has explored many areas of woodturning, and his principal repertoire includes natural-edged vessels, lidded boxes with ornate finials, hollow forms, and formal vessels. His artistic goal is to highlight as much of the natural figure, texture, and color from the wood as possible. Simple shapes combined with graceful curvatures amplify the beauty of his turnings.

Even with a day job, Allen is a prolific turner. He has developed turned pieces that are included in the State of Maryland and City of Annapolis Archives, the on-line Wye Oak Gallery and commercial sites Teknatool in New Zealand and Exotic Lumber in Annapolis. More of his work be seen at his excellent *LatheScapes* website... [www.lathescapes.com](http://www.lathescapes.com). He also teaches several woodturning courses at Maryland Hall for the Creative Arts.

For us, Allen will demonstrate how to deal with a Banksia Pod from Australia. He will show how to turn a classic hollow form with a pedestal, collar, and finial. (Because of time constraints, he will only have time to discuss the collar and finial). He will show how to mate other woods with the pod and glue them. a large number of different types of tools will be required.

We have purchased some extra, raw pods, and they will be for sale at the meeting at cost for \$10 each. There will also be some raw pods set aside for Skill Enhancement, so be sure to sign up for the April session.

Please join us for what is sure to be an unusual and outstanding session.





## MARCH MEETING MINUTES

TIM ALEY, SECRETARY

**A**T PRECISELY 7:06PM, President Bert Bleckwenn called the March 2011 meeting to order and welcomed 26 members and guests. Guest Steve Miller introduced himself as someone who was interested in learning how to turn and Steve Drake introduced himself and became a new member.

Bill Autry collected 2011 member renewal dues. Any member who has not paid their 2011 dues by 03/31 will be dropped from the Member E-mail distribution list.

The Skill Enhancement Sessions this month will cover goblets and tool making, along with new member and novice turner support. The dates are Friday 03/11 and Friday 03/25.

The Warriors-In-Transition Program coordinator responsibilities have been taken over Don Van Ryk. Don will be in contact with Bert, Elliot Schantz, and Jeff Bridges in scheduling coverage for the 2nd & 4th Tuesdays of the month. We are now conducting twice monthly session at the Walter Reed Art Therapy department with the two on-site lathes.

A new Regional Chapter of the Society of American Period Furniture Makers (SAPFM) is being formed in the Maryland area with the first meeting scheduled for Saturday, April 9th. Contact Bert Bleckwenn for details.

Tim Aley was surprised, shocked, and somewhat happy with recognition of his work on the MCW's AAW Celebrate 25 entry for the St. Paul Symposium.



GUEST, STEVE MILLER



NEW MEMBER  
STEVE DRAKE

nated by Phil Brown, Bill Autry and Mark Verna.



Mark Verna was thanked for initiating the first of hopefully many MCW Wood Hunt Events. Participants had a good time and walked away with some great pieces. Mark mentioned he was trying to organize a time this month.

Phil Brown announced that he, Clif Poodry, and David Fry have a show at the Sandy Spring Museum. A Trio of Turners opens on April 3rd and runs through the end of May.

Gary Guenther announced on behalf of our demonstrator Chuck Engstrom that Chesapeake Woodturners are having an exhibit and sale at the Montpelier Mansion in Laurel during the month of March.

Tim Aley brought in a pair of bottle stoppers for the MCW Chapter Challenge. Tickets were distributed and Don VanRyk won a bottle stopper and now has to make something and bring it in for a future meeting to raffle off.

The Show & Tell table was packed with pieces including items from the skew challenge. Pieces were checked in by Richard Webster and Michael Blake, photographed by Michael Colella, and ferried back & forth by Don Van Ryk.



Clif Poodry led the Show & Tell session that had a variety of items from a ladle and bowls to many objects turned only with the skew chisel.

Program Chair Gary Guenther introduced Chuck Engstrom and his demonstration of goblets & tool making.

The Silent Auction table was filled with many large chunks of apple, cherry, elm, and walnut generously do-

## MCW MEMBER NEWS

PHIL BROWN/MICHAEL BLAKE

- ❖ **PHIL BROWN, DAVID FRY & CLIF POODRY**, the *Three Musketurners Trio of Turners* will exhibit 42 pieces of their work at the **Sandy Spring Museum**, 17901 Bentley Road in Sandy Spring from April 3rd through May 30th. The hours are 9:00AM-4:00PM on Mondays, Wednesdays, & Thursdays and 12:00NOON-4:00PM on Saturdays & Sundays.
- ❖ **MEMBERS** who provided pieces for the Silver Spring Library Exhibit are... **Tim Aley, Phil Brown, Tina Chisena, Mike Colella, David Fry, Gary Guenther, David Jacobowitz, Gary Nickerson, Elliot Schantz, Donald Van Ryk, Mark Verna, and Richard Webster.**
- ❖ **MARK SUPIK & COMPANY** has sessions in February, March, and April. Any future additions or changes will be available in this space every month or call 410/732-8414 or their website at... [marksupikco.com/School/schoolcurrent09-1.html](http://marksupikco.com/School/schoolcurrent09-1.html)
  - Bowl Turning – Saturday, April 9th
  - The Right Start\* – Saturday, May 28th
  - Bowl Turning – Saturday, June 11th
  - The Right Start\* – Sunday, April 10th
  - Bowl Turning – Sunday, May 29th
  - The Right Start\* – Sunday, June 12th

(\*) For our *The Right Start* spindle classes, let us know ahead of time if you want to make a beer tap, fiber art, or other tools and we will have the materials you need on hand.

Sessions run from 8:30AM to 5:00PM. Students are provided with safety equipment, an individual lathe, and set of tools to use during the workshop. All project materials provided. Class size is limited to five. Cost is \$150 for the all day workshop, \$50 deposit required to hold your space, refundable up to one week prior to class. Class cost for all area AAW Chapter members is discounted 20% to \$120. Coffee and donuts are provided and lunch from a famous Baltimore delicatessen.

- ❖ **CLIF POODRY** teaches the following classes at the Woodworkers Club in Rockville –
    - Introduction To The Lathe** on Saturdays April 2nd and 23rd, May 21st, June 11th, July 23rd, and August 27th.
    - Advanced Bowl Turning** on Saturdays & Sundays April 16th-17th, May 7th-8th, June 4th-5th, July 9th-10th, August 13th-14th, and September 24th-25th.
    - Beginning Bowl Turning** on Saturdays June 18th, August 6th, and September 10th.
- For more information see: [woodworkersclub.com/practice%20class1.htm](http://woodworkersclub.com/practice%20class1.htm) or call 301/984-9033



CLIF POODRY

**DON'T BE SHY – PROMOTE YOURSELF.** Let us know about your woodturning related activities so they can be included in the newsletter each month. Send your information to **Bert Bleckwenn** at [bableck@gmail.com](mailto:bableck@gmail.com) or call 301/634-1600 OR to **Phil Brown** at [philfbrown@comcast.net](mailto:philfbrown@comcast.net) or call 301/767-9863.

## FINANCIAL REPORT

PHIL BROWN, TREASURER

ACCOUNT BALANCE 02/28/10 .....	\$ 3,062.13
INCOME \$15.00 [SILENT AUCTION] \$110.00 [MEMBERSHIP FEES].....	\$ 125.00
EXPENSES \$50.00 [Demonstrator Fee] \$385.09 [WARRIORS-IN-TRANSITION] \$12.95 [SKILL ENHANCEMENT].....	(\$ 448.04)
CURRENT ACCOUNT BALANCE 03/31/11 .....	\$ 2,739.09

## MEMBERSHIP REPORT

BILL AUTRY, MEMBERSHIP CHAIR

As of March 31st, forty-nine 2010 members have renewed for 2011 and nineteen have not renewed. That gives us a final renewal rate of 72% – and that's exceptional.

Even more exceptional, is that we have been fortunate to have signed up new Members at every Meeting this year – 9 New in three months. At the March Meeting, **Steve Drake** was a guest and signed up as a new member. *Welcome to Steve!*

With renewed and new Members, the total MCW active membership now stands at 58. But that number is smaller than the last two years. We missed opportunities to sign up new Members on several occasions in 2010 – the Demonstration Day at the Woodworkers Club in October being the most significant.

In 2011, every current Member needs to keep in mind the adage that *new blood is life blood...* so go out and knock someone over the head and bring them to a meeting and make sure they have \$20 on them!



## SANDY SPRING MUSEUM SHOW

PHIL BROWN



THE "TRIO OF TURNERS" – DAVID FRY, CLIF POODRY & PHIL BROWN



MUSEUM DIRECTOR NATALYA PARRIS



BARBARA WOLANIN & PHIL BROWN  
[VISITING IN THE BACKGROUND, JEFF BERNSTEIN,  
PRESIDENT OF COLLECTORS OF WOOD ART]



ASSORTED PIECES FROM THE "TRIO"  
[SPALTED MAPLE "FLARE" BOWL BY PHIL BROWN, NATURAL-EDGE BOWL BY DAVID FRY,  
AND IN FRONT, A COLLECTION OF 8 LIDDED BOXES BY CLIF POODRY.]





## SILVER SPRING LIBRARY EXHIBIT

PHIL BROWN



THANKS TO ALL THE MEMBERS WHO SUPPLIED PIECES FOR OUR FIRST EXHIBIT AT THE SILVER SPRING LIBRARY. SPECIAL THANKS TO VICKY GUENTHER, FILLING IN WHILE GARY HAD A COLD, CLEANING & MAKING ALL THE CASES SPARKLE.

## LATHES FOR SALE

- The Woodworkers Club is offering one of their **Jet 16x42 Variable Speed full size lathes** for **\$950.00**. They are offer it to the MCW before they put it out on Craigslist. Interested members should contact Matt Nauman directly at the Club.
- **CAW Member Ray Bowers** is offering his 2-year-old **Jet 1220VS Midi Lathe**, along with numerous 1x8TPI accessories, for **\$625.00**. Contact him at [ray@bowers.com](mailto:ray@bowers.com)
  - Jet 1220VS (variable speed) Lathe
  - 6" and 10" Tool Rests
  - 4-Prong Spur Drive
  - Live center
  - Knock-out Bar
  - 3" Face Plate
  - Jet Adjustable Stand for JWL-1220
  - Jet 28" bed Extension
  - Monster Mini T-nuts. These are upgraded clamping plates for the tool rest and tail stock to give better clamping on the bed and prevent creeping.



## PRESIDENT'S PERSPECTIVE

BERT BLECKWENN

### WARRIORS-IN-TRANSITION PROGRAM UPDATE

We've just received official confirmation that the Arts & Craft Center, including the woodworking shop will be closed officially on April 30, 2011 and Chris Wright's employment will end. We have been in the final stages of completing the transition for the program to **Don Van Ryk**, so we will be meeting with Chris Wright and the Art Therapy Department head during April to work out the transition to supporting the Art Therapy Department directly. Don has already assumed responsibility as MCW's primary focal point for supporting this effort.



### SKILL ENHANCEMENT PROGRAM & FACILITIES

The April Skills Enhancement session consists of only one evening date scheduled from 7:00-9:00PM on April 8th. As I will not be available to provide the organization or guidance for this session, Carl Powell has agreed to provide the necessary coordination for the session. The April MCW Demonstration will feature Banksia Pod turning and we have ordered a quantity of raw pods that will be available for sale to members at the meeting and can be used for the MCW Skill Enhancement session focus, if interested.

If you are interested in participating in the April session, please send me an email (bableck@gmail.com) to sign up and reserve your slot. Let me know if there is any specific technique or activity you would like some help with as well. Sessions are limited to five members per session and are on a first-come, first-serve basis.

We continue to have very good turnout for the Skills Enhancement sessions with eight total participants in the March sessions.



### RAW BANKSIA PODS FOR SALE

In conjunction with our April meeting demonstration and Skill Enhancement session, several raw Banksia Pods have been pre-ordered for members who have an interest in exploring use of these unusual pieces. The cost for MCW Members is \$6.00-per-piece.

### AAW SYMPOSIUM RAFFLE

**AAW 25th Annual International Symposium**

## Raffle!

Win this one-of-a-kind  
AAW 25th Anniversary  
**Powermatic 3250 B Lathe.**

*Custom painted by internationally  
renowned artist and woodturner  
**Binh Pho.***

**Shipping included!**

Free shipping in Continental U.S. \$500  
shipping allowance for shipping outside U.S.

*Powermatic 3250 B Lathe  
generously donated  
by **Walter Meier Inc.**  
Powermatic/JET*

## Tickets \$10

Purchase your 2011 AAW Symposium raffle tickets through your local chapter or in person at the symposium.

Proceeds support activities of the American Association of Woodturners. You need not be present to win.

Paul Simon has agreed to run the AAW Lathe Giveaway raffle. Please see Paul for tickets during the next couple of MCW meetings which will be \$10 each. PowerMatic has donated a lathe to AAW for the 25th Anniversary International Symposium. This PowerMatic Model 3520B has been custom painted by Binh Pho. The drawing for the lathe will be held at the AAW Symposium Banquet on Saturday evening, June 25th. Ticket holders need not be present to win. Free shipping for the winner.

*Happy Turning! BERT*



## MARCH SHOW & TELL

MICHAEL BLAKE

PHOTOGRAPHS BY TIM ALEY & MICHAEL COLELLA



### MARK ADLER

5" x 1"  
HANDLE FOR TUNING BAR  
USED FOR A HARPSICHORD...  
TURNED WITH SKEW CHISEL  
[KINGWOOD]



### GARY GUENTHER

2½" EGG, 11" PEDESTAL [MACACUAUBA, ORANGE OSAGE BARK]

### CLIF POODRY

2½" x 30" BASEBALL BAT [ASH]  
2" x 5" FINIAL EXERCISE PIECE [CHERRY]





## MARCH SHOW & TELL

MICHAEL BLAKE



### MICHAEL COLELLA

LEFT

9" x 4" RIMMED BOWL  
[SYCAMORE]

RIGHT

5" x 2½"  
VOTIVE CANDLE HOLDER  
[WORMY RED OAK]

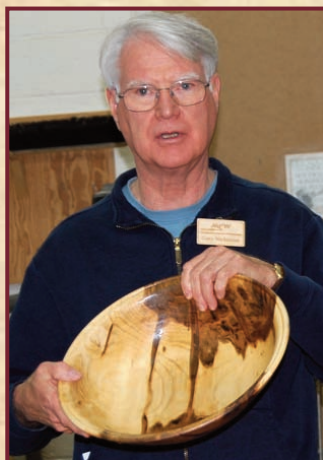
**RICHARD WEBSTER**  
7½" x 4½"  
VASE, WITH BASE  
[CHERRY BURL]



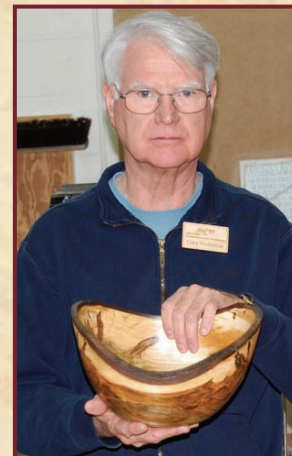


## MARCH SHOW & TELL

MICHAEL BLAKE



**GARY  
NICKERSON**



TOP LEFT 13 $\frac{3}{4}$ " x 4" RIMMED BOWL [AMBROSIA MAPLE]  
TOP RIGHT 10 $\frac{3}{4}$ " x 4" NATURAL-EDGE BOWL [AMBROSIA MAPLE]  
CENTER 1" x 7 $\frac{1}{4}$ " HONEY DIPPER [PINE, TURNED WITH SKEW CHISEL]



**ELLIOTT SCHANTZ** 9" x 2 $\frac{1}{2}$ " SHALLOW BOWL [MAHOGANY]



## MARCH SHOW & TELL

MICHAEL BLAKE



5½" x 2½" WINGED BOWL [CHERRY]



MARK VERNA



DON VAN RYK  
2" x 6" BUD VASE  
[WHITE OAK]



TIM ALEY  
BOTTLE STOPPERS  
[SPALTED MAPLE]



PAUL MAZZI 1" x 17" Mallet Handle [HICKORY]





## MARCH SHOW & TELL

MICHAEL BLAKE

### BILL LONG



10½" x 4 & 9½" x 3" PAIR OF BOWLS TURNED FROM THE SAME LOG [WALNUT]



6½" x 1½" "PROOF-OF-CONCEPT" TRENCHER TRIO [TULIP]



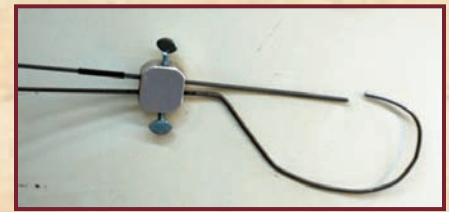
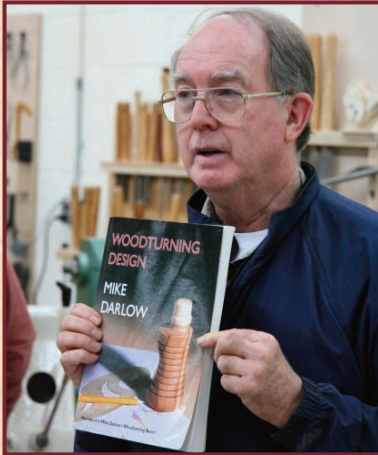
4¼" x 10" LADLE [ELM]



## MARCH DEMO HIGHLIGHTS

MICHAEL BLAKE

PHOTOGRAPHS BY TIM ALEY & GARY GUENTHER



FOR FULL-SIZE PHOTOS AND CAPTIONS OF CHUCK ENGSTROM'S COMPLETE DEMONSTRATION ON TURNING GOBLETs... PLEASE GO TO MCW'S WEBSITE, CLICK ON PHOTO GALLERY, CHOOSE MARCH DEMONSTRATION. HERE IS THE DIRECT LINK...

[montgomerycountywoodturners.org/PhotoGallery.aspx](http://montgomerycountywoodturners.org/PhotoGallery.aspx)

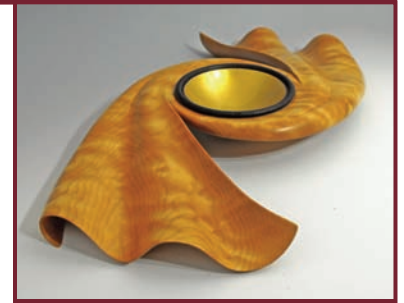


## FUTURE DEMONSTRATIONS/EVENTS

GARY GUENTHER

### ➤ August 11th – Keith Tompkins – Signature Linen Fold Piece.

Keith will demonstrate his signature “linen fold” piece that was just featured in the *Woodturning* (UK) magazine and can be seen on the home page of his web site at [www.keithtompkins.com](http://www.keithtompkins.com). It is turned from a rectangular block. As he works on it, he will carefully describe each tool cut on the lathe, as drawn from his well-known demonstration “Ten Essential Cuts” presented at the 2010 AAW Symposium in Hartford.



If you have suggestions for future demonstrators, or would consider demonstrating yourself, please contact Gary Guenther by e-mail at <[gary.guenther@att.net](mailto:gary.guenther@att.net)> or call 301/384-7594.

## SMITHSONIAN CRAFT SHOW

PHIL BROWN

- The Smithsonian Craft Show will be at the National Building Museum Thursday April 14th to 17th. Hours are 10 AM to 8 PM on Thursday and Friday, 10 to 6 PM on Saturday, and 11 to 5 PM on Sunday. Ten exhibitors show wood, and are listed on pages 12 and 13 at: [www.smithsoniancraftshow.org/CS2011Show/ExhibitorsDirectoryMedium.pdf](http://www.smithsoniancraftshow.org/CS2011Show/ExhibitorsDirectoryMedium.pdf).

Collectors of Wood Art will give an Excellence in Wood award worth \$1,000.

More show information is at: [www.smithsoniancraftshow.org/indexmain.asp](http://www.smithsoniancraftshow.org/indexmain.asp)

## THE WYE OAK PROJECT

ALEX ALEXOPULOS

*Longevity*, a commissioned turning, was created from a piece of the historic Wye Oak, Maryland's most famous White Oak tree. This venerable tree stood proudly on the Eastern shore of Maryland for more than 450 years before it was blown over during a severe thunderstorm on June 6, 2002. Its weight was estimated to have been in excess of 200 tons, measured 31'8" in circumference, was 96' tall and had a 119' crown spread. This tree was 100 years older than the state of Maryland!

The tree was in very bad condition before it fell. It was loaded with insect and disease damage, structural defects, restoration artifacts, including concrete mixed with asbestos, steel cable, eyebolts, and insecticides. Less than 1% (excluding the bole) was considered usable for sawn boards. The image below shows the completed hollow form (right) and an offcut (left). The mirror image insect holes are readily seen in the image. Turning was very difficult due to a bark inclusion that extended through a 270° arc. *Longevity* is now in the Maryland Department of Natural Resources on-line Wye Oak Gallery.



**LONGEVITY** — Natural Edge Hollow Form — White Oak (*Quercus Alba*) — Height–3½" – Diameter–4½"



## MCW MEETING SCHEDULE - 2011

Meetings are held on the Thursday before the second Saturday each month, from 7:00PM-9:00PM, at the Woodworkers Club in Rockville, Maryland. See our website for a map to the meeting site.

<b>2011 MEETING DATES</b>	<b>JAN 6</b>	<b>FEB 10</b>	<b>MAR 10</b>	<b>{APR 7}</b>	<b>MAY 12</b>	<b>JUN 9</b>
	<b>JUL 7</b>	<b>AUG 11</b>	<b>SEP 8</b>	<b>OCT 6</b>	<b>NOV 10</b>	<b>DEC 8</b>

## MCW'S TURNING JOURNAL

A monthly publication of Montgomery County Woodturners – A Chapter of the American Association of Woodturners.

Editor: Michael Blake – Phone: 301/589-1815 – Email: [mb7298@comcast.net](mailto:mb7298@comcast.net)

**THE MCW WEBSITE IS** <http://montgomerycountywoodturners.org>

## CONTACT INFORMATION - OFFICERS & VOLUNTEERS

President.....	Bert Bleckwenn.....	<a href="mailto:bableck@gmail.com">bableck@gmail.com</a> .....	301/634-1600
President Emeritus/ Treasurer.....	Phil Brown.....	<a href="mailto:philfbrown@comcast.net">philfbrown@comcast.net</a> .....	301/767-9863
Vice President.....	Clif Poodry.....	<a href="mailto:cpoodry@aol.com">cpoodry@aol.com</a> .....	301/530-4501
Program Chair.....	Gary Guenther.....	<a href="mailto:gary.guenther@gmail.com">gary.guenther@gmail.com</a> .....	301/384-7594
Membership.....	Bill Autry.....	<a href="mailto:bill_autry2004@yahoo.com">bill_autry2004@yahoo.com</a> .....	301/524-7198
Secretary.....	Tim Aley.....	<a href="mailto:taley16922@aol.com">taley16922@aol.com</a> .....	301/869-6983
Webmaster.....	Carl Powell.....	<a href="mailto:cmpowell@gmail.com">cmpowell@gmail.com</a> .....	301/924-6623
Newsletter Editor.....	Michael Blake.....	<a href="mailto:mb7298@comcast.net">mb7298@comcast.net</a> .....	301/589-1815
Web Albums.....	Tim Aley, Michael Colella	Show & Tell Recording.....	Richard Webster
Mentor Program.....	Donald Couchman	Gallery Photography.....	Hal Burdette, Michael Colella
Group Buys.....	Vacant	Photography Assistant.....	Donald Van Ryk
Lending Library.....	Clif Poodry	Challenge Coordinator.....	Elliot Schantz
Wood Identification.....	Ed Karch	Candid Photography.....	Tim Aley, Stuart Glickman
Exhibit Committee.....	Phil Brown, Hal Burdette, Clif Poodry	Skills Enhancement Coordinator....	Vacant

## MEMBER DISCOUNT PROGRAMS

### EXOTIC LUMBER, INC. • GAITHERSBURG, MARYLAND – [exoticlumberinc.com](http://exoticlumberinc.com)

With over 130 species in stock, Exotic Lumber has one of the widest selections available on the East Coast. We offer a 10% discount to MCW members. We have warehouse locations in Gaithersburg and Annapolis, where you are welcome to select from our extensive selection of turning blocks.



### HARDWOODS, INC. • FREDERICK, MARYLAND – [hardwoodsincorporated.com](http://hardwoodsincorporated.com)

10% off all turning stock, lumber, moldings, finishes and hardware. 10% off on all Amana router bits and blades that list for \$75.00 and under and 20% off those that list for over \$75.00. 5% off all plywood and veneer products.



### 2SAND.COM – [2sand.com](http://2sand.com) or call 800/516-7621

2Sand.com is a coated abrasive specialist focused on fast service and fair prices providing superior sanding discs, sandpaper sheets, and woodturning tools to woodshops. MCW Member Discount is 10% (discount code available in the restricted area of the MCW Website).



### ROCKVILLE WOODWORKERS CLUB – [woodworkersclub.com](http://woodworkersclub.com)

MCW and other club members, remember to support the Woodworkers Club by purchasing turning supplies during our meetings and save 10% on the retail price.



### CRAFT SUPPLIES USA – [woodturnerscatalog.com](http://woodturnerscatalog.com)

Club members can save 10% on all finishes & disc abrasives from Craft Supplies USA. Just mention your club name and save, all year long. You can always see current club specials by clicking on the members login button on their homepage. New 15% specials are updated on the 1st of the month, which can be accessed by using on the link above and going to the club member login located on the lower right portion of the page.



### HARTVILLE TOOL CLUB – [hartvilletool.com](http://hartvilletool.com)

Members get a 15% discount, with MCW receiving a 3% rebate. **If you have not signed up for this program, let Stan Wellborn know you want to do so. He will let Hartville know you are an MCW member and sign you up.** Catalogs and ordering instructions are available or at meetings.

