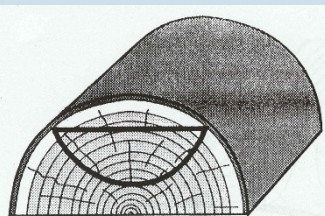


Volume 2011, Issue 12

December 2011



Montgomery County Woodturners

<http://montgomerycountywoodturners.org>

Page 1

Next Meeting and Demonstration (Gary Guenther)

The next meeting will be:

Date: Thursday, December 8, 2011
Time: 7:00-9:00 PM
Location: Woodworkers Club
4950 Wyaconda Road
Rockville, MD 20853
(301) 984-9033

Agenda

- 6:45 - 7:00 PM Bring a chair, if you wish... be sure to wear your name tag... meet and greet other members... register your items for Show & Tell with Richard Webster... bid on Silent Auction items... sign out and pay Clif Poodry for videos from the club's Lending Library.
- 7:00 - 7:15 PM Business Meeting and Show & Tell
- 7:15 - 8:50 PM • Program: **Tree to Lathe, Part II**
- 8:50 - 9:00 PM Pay for and retrieve your Silent Auction items, pack up, put the lathe and space back in order.

Demonstrator Profile - Tree to Lathe, Part II

At the November meeting, Part I of "Tree to Lathe", executed by our expert panel, was very well received. Because it took more time than planned, we will continue the program as Part II in our December meeting.

As woodturners, we like to spend our time at the lathe, but our sources of raw materials are seldom close to being ready to hold between centers. In five years of demonstrations, we have never looked in detail at how to get the wood ready to turn, from the point of view of personal vision, design, tools, and practical skills. It will be particularly worthwhile for our newer members to be introduced to the various concepts, processes, skills, and safety, but I suspect there is a lot here for most of us to learn or review. It is important to remember that there is no "right" way – indeed there are many "my" ways that work just fine. Several of our most experienced MCW members will help teach the variety of possibilities and methods, while always keeping safety first in mind.

What are we actually talking about? Here are the remainder of the topics to be discussed and demonstrated: Anchorsealing, drying, purposeful spalting, storage, and preservation, including mold hazards; trimming and shaping blanks with a band saw, or an electric chain saw, or a hand saw; Mounting the raw piece on the lathe; and more.

Special Points of Interest:

- Time to identify 2012 MCW Officers
- 2012 MCW Dues

Inside this issue:

Meeting & Demo	1
President's Perspective	2-3
Financial Report	3
News about our Members	4-5
October Meeting Minutes	6-7
MCW Demo Day	7
Future Meetings	8-9
2012 Schedule	10
Membership Information	11
Chapter Contacts	12

President's Perspective (Bert Bleckwenn)

MCW 2012 Officer Election

Solicitation of MCW officers for 2012 will occur in anticipation of election of new officers at the January 2012 meeting. Any current officers who are willing and interested in continuing on as officers in 2012 will be identified as well. If you are interested in taking on a leadership role for 2012, please let me know before or at the meeting.

MCW 2012 Dues

It is that time of the year! Please see Bill Autry and pay your 2012 MCW Membership Dues which are still at \$20 per year!

MCW Skills Enhancement Program

The December Skills Enhancement will focus on any turning technique you like. The session is scheduled for:

- Friday Dec 9, 2011 - 6:00-9:00PM
- A minimum of two participants is required for each session, otherwise a session will be cancelled.

2012 Meeting and Skills Enhancement Schedule

Gary is well out in front for 2012 with a schedule of great turners already. See details later in this newsletter.

The 2012 schedule for MCW Skills Enhancement has also been established in concert with the Woodworkers Club. For 2012, there will be only one monthly session with all sessions being held during the day from 10:00AM-1:00PM either on a Friday or a Sunday. If demand or special events warrant it, additional dates can be added.

The schedule for Skills Enhancement is also published later in this newsletter. Mark your calendars and take advantage of a great program.

MCW Skills Enhancement Volunteer(s) needed

It is time for other MCW members to step up and help with Skills Enhancement, so I'm looking for volunteers who can work with me and share some of the responsibilities in conducting the monthly Skills Enhancement sessions. It would really be great if a couple members volunteered so we could spread the effort across more members and alternate responsibilities every 2-3 months..

All the participants in skills enhancement have really appreciated the offering and I'm encouraged to continue with the program. It's a great way for newer members to get to know other members while sharing some camaraderie

President's Perspective (Bert Bleckwenn)

(Continued from page 2)

MCW Newsletter Editor position is vacant

We are still looking for a volunteer for the MCW Newsletter Editor position. Please let me know if you are interested or would like to discuss it.

MCW Wood Exchange

For our November meeting, Elliot Schantz arranged a wood exchange with the Florida Gold Coast Club which resulting in three very large (24"Dx24"h) Chunks of Norfolk Island Pine along with several pieces of Cuban Mahogany and Sabicu along with a East Indian Rosewood root ball. Phil Brown and Bert Bleckwenn processed the wood into manageable chunks. Bert Bleckwenn, Carl Powell, Richard Webster, and Denis Zegar contributed a variety of wood species in exchange to Lou Berson from the Gold Coast chapter.

MCW members that participated in this effort will receive wood allotments at the next meeting. Any extra wood will be placed in the Silent Auction.



MCW Picasa Picture Gallery

Pictures from last month's meeting which includes the S&T Gallery, Meeting Highlights and the featured Demonstration can be found on the MCW Picasa website at:

<https://picasaweb.google.com/montgomerycountywoodturners>

Happy turning,
Bert

Financial Report (Phil Brown)

Treasurer Report (as of Nov 21, 2011)

October income:

Silent auction 18

Total income \$18

Total funds available \$1,682.17

October Expenses:

Demo handouts 30.00

Total expense \$ 30.00

News about our Members (Phil Brown)

Bill Long and **Clif Poodry** are exhibiting turned work in *Synthesis: Select Works From The Woodworkers Club*, in the Common Ground Gallery through December 12th on the second floor at VisArts, 155 Gibbs Street, Rockville, MD.



By Clif Poodry



By Clif Poodry



By Bill Long



By Bill Long

VisArts Exhibit

Synthesis: Select Works From The Woodworkers Club - Photos by Tim Aley



Bert Bleckwenn and **Phil Brown** also demonstrated turning in the wood shop at VisArts in Rockville, MD on November 17th, as part of the MCW support of an open house celebrating the above exhibit.



Phil Brown has three turned pieces and **Stuart Glickman** has two framed photographs in *The Power of Artful Light II*, a Senior Artists Alliance exhibit at Edison Gallery, 702 Eight Street NW, Washington, DC, November 22 - December 23, 2011. Opening reception is December 3rd from 2 to 5 PM.

Phil will display his turned work at a local neighborhood event, *Carderock Creates!*, on Sunday December 4th from 2 to 6 PM in the Club House at 8200 Hamilton Spring Court, Bethesda.

Phil Brown, Jerry Kaplan, and Stan Wellborn attended SOFA Chicago on November 4th to 6th. A catalog is now in our library of this exhibit shown there: *The World Turns: AAW@25*.

Mark Supik's workshops at 1 N. Haven Street in Baltimore are:

The Right Start, Spindle Turning: \$150/day. 8:30 AM to 5:00 PM. All materials and lunch provided on Sunday Dec 11th.

Bowl Turning: \$150/day, 8:30 to 5:00 PM on Saturday Dec 10th.

Small class sizes and all skill levels welcome. Advanced turners, please let us know the specific skills you'd like to work on so that we can have the materials ready for you. Details are at: www.marksupikco.com (click on Get Schooled Here), or call 410-732-8414. There is always a 20% discount for woodturning club members

(Continued on page 5)

News about our Members (Phil Brown)

(Continued from page 4)

Don't be shy! Promote yourself. Tell us about your woodturning activities in the MCW Newsletter. Send your information by the 22nd of the month to Phil Brown at: philbrown@comcast.net, or call 301-767-9863.

Comments on SOFA Chicago

Wood turning received wonderful exposure to the public through three venues at SOFA in November.

AAW had its anniversary exhibit The World Turns: AAW@25 in a gallery setting, overseen by Tib Shaw, Gallery Coordinator.



Del Mano Gallery from Los Angeles, CA had a very large exhibit of their turned wood artists, with several of the turners present on the floor during the show. Among them is another father and son pair to watch, Hans and Jakob Weissflog from Germany.



And overseen by Michael Monroe (former Renwick Gallery Curator-in-Charge) was a first class exhibit of works by ACC Gold Medalist. This included three bowls by Bob Stocksdale, who received the award in 1995. Bob died in 2003.



November 10, 2011 MCW Business Meeting Minutes (Tim Aley)

At 7:02 MCW President Bert Bleckwenn called the meeting to order and welcomed 28 members and guests to meeting.

Lou Berson, a Gold Coast Woodturners member, introduced himself. He is in the area and brought with him some local Florida wood to be exchanged with some Maryland wood donated by Bert Bleckwenn, Carl Powell, Richard Webster, and Denis Zegar.

The Skill Enhancement Offerings for November are Friday Nov 11, 2011 and Sunday Nov 27, 2011 both 10am - 1pm

Bert said that the MCW Demo Day was a success despite the low turnout. There were more than 70 pens turned for combined donation by MCW & The Woodworker Club. Bert gave a big thanks to all the demonstrators and volunteers that helped.

A video camera has been purchased by the club. Bert found a used Kodak Zi80 on eBay for \$80. This will make burning DVD's easier. It should be at the next meeting.

The Woodworkers Club and VisArts are having an exhibition of Woodworkers Club members titled Synthesis. Bill Long and Clif Poodry will be in the show. The opening reception is Thursday, November 17th – 6:00-8:00PM and they are looking for MCW volunteers to turn at the VisArts Wood Studio.

Bill Autry is starting to collect MCW 2012 Membership Dues. He will be collecting at December and January Meetings.

Bill Long gave a first-hand Safety First talk about knowing all the tools before you use them. He talked about his encounter with a table saw.

Lou Berson also brought up a safety note; he said that a member the Gold Coast Woodturners had his sinuses removed due to being filled with dust. His message here is to wear your dust control. He commented that he wears a bull riding mask over his dust mask.

Phil Brown mentioned the Renwick Craft Alliance sale and brought in postcards with a bowl by member Richard Webster on the cover.

Stan Wellborn brought in an old article of the Washington Post (Sept. 4, 2003) Home section with Richard Webster and the exotic woods he uses.

Stan Wellborn and Phil Brown brought in catalogs from SOFA and said that it was a wonderful show.

Steve Drake asked if he could send a survey of one question a month to members asking basic knowledge questions "how do you..." and compiling the information somewhere like the newsletter, website, or a blog. It was motioned and agreed upon to try this out. It was also mentioned that the website has a section YMMV that Gary Guenther wrote and should be looked at.

Michael Blake made a motion that Lou Berson be made an honorary member of MCW. It was seconded and passed by unanimous voice vote.

November 10, 2011 MCW Business Meeting Minutes (Tim Aley)

(Continued from page 6)

Hal Burdette photographed the show and tell pieces that Richard Webster checked in.

The silent auction had several pieces of wood donated by Bill Long, Phil Brown and Bert Bleckwenn.

Stan Wellborn lead the Show & Tell Member Critique.

The presentation for the night was Tree to Lathe: Vision, Preparation, Tools, Techniques, and Safety Part I. The presenters were Mark Verna, Phil Brown and Stan Wellborn.

MCW Demo Day (Photos by Tim Aley)

MCW ended up turning 75 pens for the troops as part of the MCW Skills Enhancement sessions and the MCE Demo Day! Thanks to everyone that participated.



Some of the results!

Future Meetings (Gary Guenther)

Suggestions are welcome. Please call Gary at 301-384-7594 with your ideas.

• January 12, 2012 -- 3rd Annual Show & Tell with Formal Critiques

This has been a big hit our first two years, and we intend to continue this January MCW tradition. Instead of a demonstration, we will have an extended Show & Tell session with a formal critique of each piece by a panel of three selected craft, art, and turning experts. (We will have three new panelists.) Participants (you) will bring one piece that you have made, to have it reviewed. The idea is not necessarily to submit a 'perfect' piece, or even a finished piece – rather, the goal is for us all to learn about design, turning, and finishing techniques from the things each of us has made. This is an ideal way to learn how to improve what we are doing, from our fellow turners' experiences, in a friendly and instructive environment. Needless to say, we want as many people as possible to come and join us for this great learning opportunity, whether or not you bring a piece to be evaluated. We'll have a sign-up sheet at the December meeting to get an idea of the number of potential participants. This is guaranteed to be another fun and instructive time. Don't miss it!

• February 9, 2012 -- TBD

We normally use a "local" demonstrator in Feb. because of potential weather problems.

• March 15, 2012 -- David Ellsworth – topic TBD (what would you like to see?)

[Please note that this is *one week later* than our normal meeting day.]

Do I really have to say anything about David Ellsworth – probably the most famous woodturner in the world? Well, I could say that he was a founder of AAW in 1986, whose 25th anniversary we celebrated in St. Paul this summer. I could say he "invented" the modern hollow form. You will find his works wherever you find fine turned wood objects. Very appropriately, he got the cover of the June 2011 issue of *American Woodturner*, and there is a very nice article inside. Check it out. He's also a great guy. Perhaps he'll critique our S&T for us again. I'm sure you remember his first outstanding demo for us. Well, heeeyee's baaaaack.

• April 12, 2012 – Mike Hosaluk – topic TBD

Award-winning Mike Hosaluk, from Saskatchewan, Canada, is internationally recognized as one of the world's most creative woodturners and wood artists. It is said that: "his work is humorous and elegant, possesses character and gesture and is full of reference to architecture, nature and culture." His many and instantly-recognizable signature pieces are in all the best museums, collections, and galleries. Mike is featured in the book "New Masters of Woodturning". He is an outstanding teacher – I saw him in two rotations in St. Paul. His "how'd he do that?" works are mind bending, and he happily demonstrates his techniques. He is also an author, sells a line of tools, and has a DVD. His web site is <http://michaelhosaluk.com>. He will also be teaching a highly recommended two-day, hands-on Workshop at the Woodworkers Club on the Wednesday and Thursday associated with our meeting. Talk to Matt about signing up, and be sure to mark this demo on your calendars.

• May 10, 2012 – Alan Carter – either 'Suspended' Vessels or 'Split-bowl' vessels

Alan is a new 'big' name with lots of magazine coverage recently for his "suspended" vessels. Check out his work at www.alancarterstudio.com and the June 2011 issue of Woodturning Design magazine in which he has the cover, and artist's profile, and a good article. His work has also been widely presented in recent issues of *American Woodturner*. He creates vibrant and unusual sculptures that have a strong dy-

(Continued on page 9)

Future Meetings (Gary Guenther)

(Continued from page 8)

namic presence. He is honored to have been selected to give two woodturning demonstrations at SOFA Chicago this November. SOFA is *the* premiere international 3D art exposition. Alan will be flying in from Illinois.

• September 6, 2012 – Patrick O’Brien – topic TBD

Patrick, a widely-respected CAW member and professional turner, did an excellent demo for us of his signature natural-edge pot in April 2010, and he will be making a return visit to show us what he’s currently working on.

2012 Meeting Schedule		
January 12 <i>MCW Show & Tell</i>	February 9	March 15 <i>David Ellsworth</i>
April 12 <i>Mike Hosaluk</i>	May 10 <i>Alan Carter</i>	June 7
July 12	August 9	September 6 <i>Patrick O’Brien</i>
October 11	November 8	December 6

2012 Meeting and Skills Enhancement Capabilities & Schedule (Bert Bleckwenn)

Our MCW Skills Enhancement Program has been very well received this year with numerous members participating. It has been very well attended by newer members which was one of our objectives in establishing the program. Evening sessions have been sparse so for 2012, only one session per month has been schedule with dates and times varying between Friday AM and Sunday AM sessions.

Besides the 4-5 lathes that the Woodworkers Club continues to maintain in their shop, MCW's acquisition of several mini-lathes and midi-lathes (Jet, General, Delta and Rikon) and the large Woodfast lathe has brought the total lathe capacity up to ten for both the Woodworkers Club use and our use.

Besides the MCW lathes located in the Woodworkers Club shop, MCW has provided a Oneway mobility base and several chuck adapters in varies sizes so members are able to bring and use their own chucks on most any of the lathes. The adapters are kept in the small hanging metal cabinet in the lathe area. MCW has also made available three Workmates for use as stands for three of the midi-lathes and also available as tool stands for the large lathes, when not being used as lathe stands.

MCW also maintains numerous turning tools, sharpening tools, finishing supplies and other accessories stored in a large, black Stanley Tool Chest which is stowed under one of the open workbenches. A key has been provided to the Woodworkers Club and is available to MCW members when participating in a Skills Enhancement session or other MCW sponsored events.

Mark your calendars now so you can take advantage of our meetings and Skill Enhancement programs in 2012!

2012 MCW Meeting and Skills Enhancement Schedule			
Month	Meeting Date (7:00-9:00PM)	Skills Enhancement Day	Skills Enhancement Date (10:00AM-1:00PM)
January	Thursday, January 12, 2012	Friday	Friday, January 20, 2012
February	Thursday, February 9, 2012	Sunday	Sunday, February 12, 2012
March	Thursday, March 15, 2012	Friday	Friday, March 16, 2012
April	Thursday, April 12, 2012	Sunday	Sunday, April 15, 2012
May	Thursday, May 10, 2012	Friday	Friday, May 11, 2012
June	Thursday, June 7, 2012	Sunday	Sunday, June 10, 2012
July	Thursday, July 12, 2012	Friday	Friday, July 13, 2012
August	Thursday, August 9, 2012	Sunday	Sunday, August 12, 2012
September	Thursday, September 6, 2012	Friday	Friday, September 7, 2012
October	Thursday, October 11, 2012	Sunday	Sunday, October 14, 2012
November	Thursday, November 8, 2012	Friday	Friday, November 9, 2012
December	Thursday, December 6, 2012	Sunday	Sunday, December 9, 2012

Membership Application Form and Interest Profile

MCW Membership Application forms available at: <http://montgomerycountywoodturners.org/Membership.aspx>

To become a member or renew, please print out, complete and either mail it or personally deliver it to Bill Autry along with a check for \$20.00 payable to Montgomery County Woodturners. New membership in the 2nd quarter is \$15, 3rd quarter \$10, and 4th quarter \$5. A Family membership is \$30.00/yr. Please ensure you include your email address, as all communications are electronic via our website and periodic email notifications.

Member Discount Program

EXOTIC LUMBER, INC. GAITHERSBURG, MARYLAND – exoticlumberinc.com

With over 130 species in stock, Exotic Lumber has one of the widest selections available on the East Coast. We offer a 10% discount to MCW members. We have warehouse locations in Gaithersburg and Annapolis, where you are welcome to select from our extensive selection of turning blocks.



HARDWOODS, INC. FREDERICK, MARYLAND – hardwoodsincorporated.com

10% off all turning stock, lumber, moldings, finishes and hardware. 10% off on all Amana router bits and blades that list for \$75.00 and under and 20% off those that list for over \$75.00. 5% off all plywood and veneer products.



2SAND.COM – 2sand.com or call 800/516-7621

2Sand.com is a coated abrasive specialist focused on fast service and fair prices providing superior sanding discs, sandpaper sheets, and woodturning tools to woodshops. MCW Member Discount is 10% (discount code available in the restricted area of the MCW Website).



ROCKVILLE WOODWORKERS CLUB – woodworkersclub.com

MCW and other club members, remember to support the Woodworkers Club by purchasing turning supplies during our meetings and save 10% on the retail price.



CRAFT SUPPLIES USA – woodturnerscatalog.com

Club members can save 10% on all finishes & disc abrasives from Craft Supplies USA.

Just mention your club name and save, all year long. You can always see current club specials by clicking on the members login button on their homepage. New 15% specials are updated on the 1st of the month, which can be accessed by using on the link above and going to the club member login located on the lower right portion of the page.



HARTVILLE TOOL CLUB – hartvilletool.com

Members get a 15% discount, with MCW receiving a 3% rebate. If you have not signed up for this program, let Stan Wellborn know you want to do so. He will let Hartville know you are an MCW member and sign you up. Catalogs and ordering instructions are available or at meetings





Montgomery County Woodturners - A local chapter of the American Association of Woodturners (AAW)

MCW Contact Information

OFFICERS

President	Bert Bleckwenn	bableck@gmail.com	301/634-1600
President Emeritus/ Treasurer	Phil Brown	philfbrown@comcast.net	301/767-9863
Vice President	Clif Poodry	cpoodry@aol.com	301/530-4501
Program Chair	Gary Guenther	gary.c.guenther@gmail.com	301/384-7594
Membership	Bill Autry	bill_autry2004@yahoo.com	301/524-7198
Secretary	Tim Aley	taley16922@aol.com	301/869-6983
Webmaster	Carl Powell	cmpowell@gmail.com	301/924-6623
Newsletter Editor	(vacant)		

VOLUNTEERS

Web Albums	Tim Aley, Michael Colella
Show & Tell Recording	Richard Webster
Mentor Program	Donald Couchman
Gallery Photography	Hal Burdette, Michael Colella
Group Buys	(vacant)
Photography Assistant	Donald Van Ryk
Lending Library	Clif Poodry
Challenge Coordinator	Elliot Schantz
Wood Identification	Ed Karch
Candid Photography	Tim Aley, Stuart Glickman
Exhibit Committee	Phil Brown, Hal Burdette, Clif Poodry
Skills Enhancement Coordinator	(vacant)
Warrior Support Program	Don Van Ryk