



April 2014

Next Meeting and Demonstration

The next meeting will be:

Date: **THURSDAY, April 17, 2014**

Time: 7:00-9:30 PM

Location: **Woodworkers Club
11910-L Parklawn Drive
Rockville, MD 20853
(301) 984-9033**

**Please park in the non-marked spots along
the side and in the back of the store!**

Agenda

6:45 -7:00 PM Bring a chair, if you wish... be sure to wear your name tag... meet and greet other members... register your items for Show & Tell with Richard Webster... bid on Silent Auction items... sign out and pay Clif Poodry for videos from the club's Lending Library.

7:00 - 7:40 Business Meeting and Show & Tell

7:40 - 9:15 Program:
PM

9:15 - 9:30 PM Pay for and retrieve your Silent Auction items, pack up, put the lathe and space back in order.

April Program - David Ellsworth by Gary Guenther

Yes, I'm shouting. Actually, I could just stop here – have *him* and they will come!

There are only a couple of woodturners in the world whose fame is so great that it can be expressed simply by mentioning their first name. For our April meeting, we are privileged to host, for the third time, David. If you're very new to woodturning, or perhaps recently arrived from some other planet, you may not be familiar with David Ellsworth. We'll fix that. For the great majority of you who already know David, or, at least, of him, this is one of those treats that we live for. It says a lot about David that everyone who meets him considers him a friend.

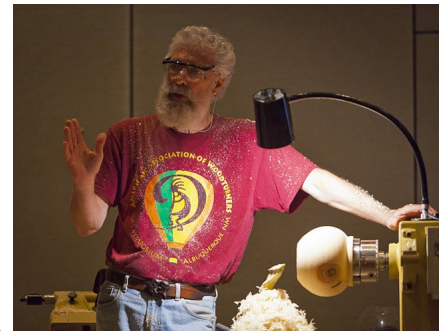


April Program - David Ellsworth



* David's list of achievements and awards are just about literally too long to list, so I won't even try. He is pretty much the guy who invented the tools and techniques for hollowing through a small opening, at least in modern times, and this continues to be his signature work. You will not find a better teacher (period), or teacher of woodturning, anywhere. Several of our Members have taken his class that he teaches in his own home workshop in Pennsylvania. Hopefully, some of you will be taking his 2-day class at the Woodworkers Club on the days following our meeting. (Highly recommended! This is your big chance! Sign up now!) If you were to have only one book on woodturning, it should be David's book: "Ellsworth on Woodturning". If you don't have it, you can buy it at the Club, or get it right now on Amazon and read some of it before you see him. Have it with you, and he'll be happy to sign it for you after the meeting.

For his 2014 MCW program, David will start with two open bowls, one cut rim and one natural edge. But don't be misled by the apparent simplicity, because while doing these modest forms, he is also teaching the subtleties of design, style, body movements, tool control and techniques, safety, and even health! He will also discuss hollow forms, tool design, and sharpening, as well as providing valuable information and words of wisdom learned through his many years of turning and teaching. Bring a notebook. You may be shocked when you learn how much you didn't know. When you attend a demo, no, a teaching session, by David, it is very much the journey, not the destination that is important and memorable.



We know that seating has been a bit limited lately, but more big changes are here. We are buying a new batch of padded folding chairs for your comfort. We're also planning to have two video cameras going from different viewpoints to feed images to our new 55" monitor and the smaller one. We'll also have the sound system going. You should have an excellent experience when you join what will surely be a good-sized audience. You don't want to miss this opportunity. Drop everything and get it on your calendars. (Snow is not forecast!)

David has also graciously agreed to critique ten of our Show & Tell pieces, so, if you like, please bring ONE item you'd like to have his perspective on, or something you're having problems with or would like to learn more about from his point of view. If we have time, we'll also do a limited version of our normal S&T.

. For more, see www.ellsworthstudios.com. (Check out the interviews.)

Note that this Meeting is one week later than our normal schedule.

There will be a \$10 demo fee.

Special Points of Interest:

Inside this Issue:

Meeting & Demo	1, 2
General Announce-	3
Presidents Letter	4
Meeting Minutes	5-9
Member News	10-12
Demonstration	13-16
Future Meetings	17
2014 Meetings and Skills Enhancement Schedule Future Meetings	18
Membership and Member Discounts	19
Chapter Contacts	20

GENERAL ANOUNCEMENTS

MCW Skills Enhancement Program (Bert Bleckwenn)

The Skills Enhancement Session scheduled for Sunday April 20, 2014 from 10:0-1:00.

MCW Picasa Picture Gallery

Pictures from last month's meeting of our featured Demonstration and meeting can be found on the MCW Picasa website at:

March GALLERY PICTURES

<https://picasaweb.google.com/106891946865477202075/MCWMar14Gallery#>

March MEETING PICTURES

<https://picasaweb.google.com/106891946865477202075/MCWMar14Meeting#>

Treasury Report, as of MARCH 31, 2014

March Income:

March Expenses:

Membership renewals	\$ 75	Demonstrator	100
Demo contributions	185	Chair purchase	630
Silent auction	19	AAW Chapter Insurance	<u>90</u>
Library rental	10	Total expenses\$	\$820
Tudor Place-Aley stoppers, net	90		
Cherry wood acquisition project	<u>71</u>		
Total income	\$ 450		

Total funds available \$ 2,901.14

President's Perspective (Tim Aley)

Promote woodturning.

We all come to woodturning for many reasons. Some of the reasons are to make money, create art, make items for friends, find friends, or try to master a skill. We often start turning for one of these reasons and adopt others as we learn and grow, but we still love creating something beautiful from something that most likely would be discarded or burned.



As a club, Montgomery County Woodturner's main reason for being is to promote woodturning. We put a lot of effort into doing this. Several members worked very hard to develop and present this month's meeting. It will bring out many of our members to learn from the most influential turner in modern woodturning. There is not a better promoter of woodturning anywhere than David Ellsworth.

MCW has also been promoting woodturning to the general public. Despite the weather, we had a great turn out of members at the Tudor Place Tree Fest on [date]. The weather chased away the many of the guests but we were ready! Thanks to Stan Wellborn, we were represented at World Wood Day. This was a great example of artists in several native art forms promoting art from wood around the United States. Locally we will start this year's library displays May 1st in Silver Spring to promote MCW and woodturning.

MCW's obligation is to promote woodturning and we are working hard to do it but we need your help. Enjoy the demo this month and consider what your reasons are for woodturning. When it is over, please help us share those reasons with others at meetings and other events where we participate to further our mission of promoting the art and craft of woodturning.

Keep Turning Safely!

MCW Meeting Minutes – March 13, 2014 (Jack Enders)

Opening Remarks:

President Tim Aley called the meeting to order at 7:00pm, welcoming members and any guests. Approximately 37 were in attendance.

New Members & Guests:

No new members or guests were in attendance for this meeting.

Tim again reminded everyone to wear their name tags. Laser-engraved wooden name tags are available also for \$8.00. Fill out a form at the meeting or check out the process at <http://montgomerycountywoodturners.org/NameBadge.html>

General Announcements and Updates:

Newsletter:

Tim reminded members again that we need more authors for Newsletter articles. Sharing experience by submitting stories to the Newsletter benefits everyone and makes our group wiser. Members should submit their stories about their turning experiences or other newsletter content to Editor Mark Verna by April 6th (mark.verna2@verizon.net).

Bring Back Challenge:

Duane Schmidt won last month's drawing prize, which was a cherry bowl by Mark Verna. Duane's bring back item for this meeting was a holly bowl with water-base poly finish. Mike Twenty drew the lucky ticket for this prize.

[Members are reminded that the monthly BringBack Challenge is a free raffle exchange wherein the winner of a donated piece is obliged to, in turn, furnish a donated turned object or related tool, etc., for raffling at the following meeting].

Wood Drying Bags-MCW Group Buy:

Two sizes of large plastic drying bags recommended by Mark Supik are still available from the recent MCW group buy. Prices are: \$1/bag; \$5/6 bags; \$10/15 bags, mix or match. They will continue to be made available until the supply is exhausted. At upcoming meetings or contact Bert (bableck@gmail.com)

Membership:

There are a few membership dues still outstanding, and those in arrears who wish to continue their membership should know that paid-up membership is a requirement for accessing the "Members Only" file on the MCW website. Carl Powell is working with Elliot Schantz and Tim to refine the members email list.

MCW Meeting Minutes – March 13, 2014 (Jack Enders)

AAW:

The American Association of Woodturners (AAW) has announced an increase of \$2 in annual dues effective April 2014. Membership benefits are extensive, and include liability insurance for members who are involved in demonstrations and other public activities. Further information can be found at their recently-upgraded website: www.woodturner.org. [Note: AAW membership is a requirement to participate in MCW's Skills Enhancement sessions at the Woodworkers Club].

Upcoming Scheduled MCW and Other Events of Interest to Members:

Upcoming Programs: Tim announced the following changes and featured programs for upcoming meetings:

April 17, 2014 Meeting: David Ellsworth (note this is 1 week later than usual date), in conjunction with WC Course

June 2014 Meeting: Warren Carpenter

September 11, 2014 Meeting: Molly Winton in conjunction with WC Course

November 2014 Meeting: Jimmy Clewes

MCW members were encouraged to sign up for the WC courses offered by these renowned woodturning experts. Flyers containing course details will be sent out to members when they are received as well as being posted in the WC retail area.

Members with ideas for future programs are urged to contact Program Chairman Mike Colella (mike@colelladigital.com), President Tim Aley (taley19622@aol.com), or Vice President Gary Guenther (gary.c.guenther@gmail.com).

Tudor Place Event: Phil Brown is coordinating the Tudor Place event and is looking for 2-3 volunteers to demonstrate turning and to talk to the public at Tudor Place in Georgetown (DC) on Saturday March 29th, weather permitting. There will be two shifts: 10am to 12:30pm, and 12:30pm to 3pm. Fresh tulip poplar from the site will be available for turning, or you can bring your own wood. Also, bring your own tools. Questions regarding this event should be directed to Phil (philbrown@comcast.net).

Library Display Project: Phil Brown announced that library exhibit items for our Library Display Loan Project will still be accepted from members. The schedule for upcoming displays is as follows, and volunteers to help Phil with setup are always appreciated:

Silver Spring Library, May 1 (Russ Iler volunteered to help Phil install this display—usually a 1 to 2 hour job)

Davis Library in June 2014

Quince Orchard Library in October 2014

Germantown Library in November 2014

Potomac Library in January 2015

MCW Meeting Minutes – March 13, 2014 (Jack Enders)

Bethesda Library in February 2015
Quince Orchard Library in September 2015

(MCW participates in the Montgomery County Library Display Program, with several displays of members' work on month-long displays at several County libraries. It is a good opportunity for both our club and our members to connect with the greater community about our activities and talents. Phil (philbrown@comcast.net) is the coordinator. We are trying to accumulate a pool of loaned turned objects from which to draw the individual displays, to avoid the often "last-minute" rush and panic of previous months in finding enough objects for the display. Members having turned objects for loan to this program are urged to contact Phil).

MCW Skills Enhancement will take place on Friday, March 14th at the WWC from 10am to 1pm. Next following session is scheduled for Sunday April 6th. These monthly sessions provide opportunities for members to experiment and practice new techniques, try new tools, and share acquired knowledge. Contact Bert Bleckwenn if you are interested (bableck@gmail.com). The format of the session begins with the first 30 minutes or so dedicated to a specific lathe/tool/accessory enhancement technique, followed by the participant's choice of activity, under the mentorship of Bert.

[Skills Enhancement sessions are "open" turning opportunities to perfect one's skills and techniques with mentoring and members who have participated enthusiastically endorse the usefulness of these sessions. Use of WWC lathes and supplies and tools by MCW are provided. They are held on one Friday or Sunday in alternate months. Participants must be active AAW members in order to participate and be covered by the AAW Liability Insurance Policy. The full schedule for the year is given on the MCW website and in the monthly Newsletter.]

MCW Wounded Warrior Project: The bi-weekly Pen Turning sessions with WRAMC's Wounded Warriors continue with great participation and enthusiasm, drawing about 5-7 soldiers at each session, with MCW volunteers (including Project Coordinator and Leader Don van Ryk) providing mentoring and one-on-one advice and supervision. The biweekly sessions require a steady participation of MCW mentors, and for the most part, the soldiers are matched reasonably well with mentors. However, on occasion Don has come up a bit short of enough volunteers to adequately help the students, and urged the members to join in supporting this great service project.

The sessions take place on alternate Wednesdays from 12:30pm-2:30pm at the Woodworkers Club with the next sessions being held on March 19th and April 2nd and alternate following Wednesdays. Contact Don van Ryk (dvanryk@aol.com) to participate.

MCW members mentoring this program are uniformly positive about its effectiveness. Helping to assist in the rehabilitation of our wounded soldiers in developing interest and skills in woodturning, using pen turning as the focus, has been very satisfying to the soldiers themselves. Some of the soldiers have never before done any woodworking or woodturning. It is a wonderful effort that benefits both student and mentor. Tim suggested that anyone curious about the program should drop by during

MCW Meeting Minutes – March 13, 2014 (Jack Enders)

one of these Wednesday sessions and see for themselves what it is all about.

Thanks were expressed to those MCW member volunteers who have been able to show up to mentor these good people, and to the Woodworkers Club which very graciously sponsors this worthwhile program with lathes and space and the great help and participation of Chris Johnstone.

PATINA Annual Tool Auction: Tom Coker reminded members of the upcoming annual PATINA (*Potomac Antique Tools and Industries Association, a regional tool club based in Washington DC*) Auction that will take place Saturday, March 15, at the Damascus, MD Volunteer Fire Association Activity Center, located at 10211 Lewis Drive in Damascus, Maryland. The event features an indoor vending hall, as well as an outdoor tailgating area with extensive arrays of woodworking and metalworking tools for sale by individual vendors. It is a great place to pick up great hand tools, some of which are for woodturning. Indoor vending opens at 9am and the outdoor tailgating begins at sunup, both running to mid-afternoon.

World Wood Day: Stan Wellborn is organizing the wood turning portion of the event, to be held in Rockville on March 21-22. It is sponsored by the National Forest Service to highlight the impact of wood on society. Contact Stan (stan.wellborn@gmail.com) or go to http://www.worldwoodday.org/2014/Country_Content_USA.cfm#Events for more information.

MCW and Woodworkers Club Interaction: Bert Bleckwenn reported on the Turning Area Maintenance Project, noting that after the initial session of basic cleanup and lubricating of lathes, the second session went very well. Emphasis was on more detailed maintenance and repair of the Clubs' lathes. A great turnout of volunteers for the 1-1/2 hour session on March 10th. See Burt (bableck@gmail.com) for more information or if you want to join the volunteer group.

Show and Tell

Tim announced that April's Show and Tell Members' "Challenge Theme" will be Mallets, encouraging members to put their imaginations at work on mallets. He emphasized, however, that Show and Tell is not limited to that specific theme.

For this month, twelve members brought a total of 22 Show and Tell pieces, introduced by Clif Poodry, as follows:

Richard Webster: 12" x 4" Bowl (laminated plywood sheets)

Richard Webster: 6"x 8 1/2" Bowl (spalted maple)

Tim Aley: 12"x 4" Bowl (box elder)

Tim Aley: 8"x 4" Bowl (black cherry)

Tim Aley: 9"x 5" Bowl (black cherry)

Mike Radtke: Screwdriver Handles (maple,koa,walnut) fitted to old screwdriver metal shafts

Bob Grudberg: 23"x 2" Lazy Susan (oak)

MCW Meeting Minutes – March 13, 2014 (Jack Enders)

Emily Koo: 5 ½" x 3" Nick Agar (class) Decorated Viking Sunset Bowl
Jeff Tate: 5 ½" x 2 ¼" Natural Edge Bowl (black cherry)
Jeff Tate: 2 ¼" x 4 ½" Multi-Axis Box (black cherry)
Jeff Tate: 2" x 5 ½" Box with Finial (black cherry)
Jeff Tate: 4 ½" x 2 ½" Bowl (locust)
Jeff Tate: 5 ½" x 2" Natural Edge Bowl (red oak)
Margaret Follas: 4" x 2" Incised Rim Bowl (cherry)
Paul Mazzi: 3 ½" x 4" Mushrooms (apricot)
Duane Schmidt: 7" x 2" Bowl (holly) – donated for BringBack Challenge
Stan Wellborn: 14" x 3 ½" Bowl (spalted elm)
Stan Wellborn: 14" x 3 ½" Bowl (spalted elm)
Stan Wellborn: 14" x 3 ½" Bowl (spalted elm)
Benji Omisore: 12" x 4" Bowl (cherry)
Benji Omisore: 12" x 4" Bowl (cherry)
Paul Mazzi: Yarn Swift (cherry)

*[Additional detail and photos of this month's show and tell objects listed above and candid shots during the meeting can be found on the MCW website or at: <https://picasaweb.google.com/106891946865477202075/MCWMar14Gallery#>
<https://picasaweb.google.com/106891946865477202075/MCWMar14Meeting#>*

Demo Program

The evening program featured Chuck Engstrom from the Chesapeake Woodturners in Annapolis, MD, introduced by Vice President Gary Guenther. Chuck's demonstration, "Back to Basics," featured a sharing of tips and techniques dealing with tools and sharpening, work holding devices, sanding, and turning techniques.

[Note: A more-detailed description of the program is found elsewhere in the Newsletter and photos can be viewed at: <https://picasaweb.google.com/106891946865477202075/MCWMar14Program#>

The meeting adjourned at 9:35pm

--Jack Enders, Secretary

News about our Members (Phil Brown)

MCW Members Exhibiting and Demonstrating their Turning Skills



Lou Rudinski, CW, and Jeff Tate, MCW, demonstrating at Tudor Place. (Photos taken by Ted Michalck of CW)

Jeff Tate treats kids well at Tudor

Link to Tudor Place Function:

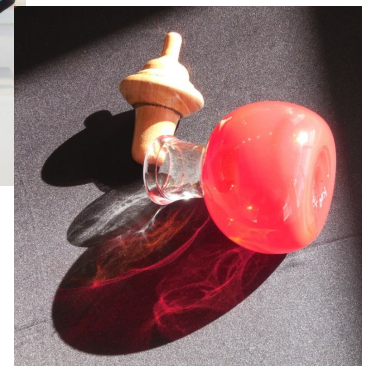
<https://picasaweb.google.com/106891946865477202075/Mar14TudorPlaceTreeFest#>



Tim Aley turning for World Wood Day. (photo by Stan Wellborn)



Emily Koo with her blown glass bottle and turned wood top.



News about our Members (Phil Brown)

Stan Wellborn organized the wood turning portion of the *World Wood Day* event held at Forest Nature Center on Grosvenor Road in Rockville, MD on March 22nd, and **Tim Aley** joined him in demonstrating.

Tim Aley, Phil Brown, Emily Koo, Beth McClelland, Jeff Tate and **Stan Wellborn** demonstrated wood turning or were there to do that at Tudor Place in NW DC for their "Tree Fest" on March 29th, joining Chesapeake Woodturners in their tent on a rainy day.

Vessels by **Phil Brown** and **Mike Twenty** were among 85 pieces displayed in the *Chesapeake Woodturners Exhibit* at Montpelier Mansion March 1st to 31st. A nice news article about the exhibit is at: www.baltimoresun.com/news/maryland/howard/laurel/ph-ii-woodturners-0313-20140310,0,6093561.story

From March 8th to 30th, **Emily Koo** had her red glass bottle with a black cherry top displayed in the annual *Workhouse Education Student and Teacher Exhibition* in the W-16-McGuireWoods Gallery at the Workhouse Art Center in Lorton, VA. She blew the bottle and turned the top to fit it in 2013.

Emily Koo and Stan **Wellborn** participated in a one-day hands-on workshop with Nick Agar in March sponsored by Capital Area Woodturners.

Thirteen members, **Tim Aley, Jim Allison, Mary Beardsley, Joe Barnard, Phil Brown, Marty Cherry, Steve Drake, Eliot Feldman, Margaret Follas, Steve Leshin, Bill Neudorfer, Matt Radtke,** and **Jeff Tate** each obtained a portion of a tall black cherry tree taken down in Bethesda in a project coordinated by Phil with proceeds benefitting MCW. This cherry wood project developed from our white oak donation project with Tudor Place.

Clif Poodry teaches *Beginning Bowl Turning* during the evenings of May 19-20 and Aug. 28--29; and *Introduction to the Lathe* April 28-29, June 7, July 8-9, Aug. 4-5, and Sept 29-30 at the Woodworkers Club. To register, call 301-984-9033, or go to classes at: <http://woodworkersclub.com/classes/> A minimum of three students are required to conduct a class.

Mark Supik's workshops at 1 N. Haven Street in Baltimore include these all-day woodturning workshops from 8:30 AM to 5:00 PM for \$150/class, with a 20% discount for AAW and local woodturning club members. Lunch & materials are included.

The Right Start: Learn spindle turning, having fun making bead & cove cuts to create wine stoppers, mallets, and other useful objects on Saturday April 12th, Sunday May 18th, and Satur-

News about our Members (Phil Brown)

day, June 7th.

Bowl Turning Fundamentals. Using green wood, learn safe use of the lathe and tools, and

basic bowl turning techniques in the morning, then choose your log, turn and

finish a bowl in the afternoon on Sunday April 13th, and Saturdays May 17th and June 14th.

Advanced Bowl Turning: Tackle end grain turning or try a natural edged bowl. Or need a larger lathe for a special project? Looking for a bowl in your own piece of wood? This is a class for students who have completed the basic bowl turning class and are ready for the next step. Sunday June 8th.

To register, phone or e-mail Nancy Supik, 410-732-8414, or nancy@marksupikco.com

Don't be shy! Promote yourself. Tell us about your woodturning activities in the MCW Newsletter. Send your information by the 25th of the month to Phil Brown, philbrown@comcast.net, or call 301-767-9863.

CRAFT SHOW

The Smithsonian Craft Show is open April 10-13 at the National Building Museum, 401 F Street, N.W., Washington, D.C. See hours and entry fee at <http://smithsoniancraftshow.org/>. Ten exhibitors, including some woodturners, are listed under WOOD on page 3 at: smithsoniancraftshow.org/wp-content/uploads/2014/02/artistshome2-27-2014.pdf.

EVENING PROGRAM – Chuck Engstrom: “Back to Basics”

VP Gary Guenther introduced our guest demonstrator for the evening, Chuck Engstrom from Chestertown, MD. Chuck is a member of the Chesapeake Woodturners Club in Annapolis, and an old friend to MCW, having visited us before as demonstrator and Critique panelist, and he shared much of his experience tonight in the format of “Back to Basics,” a discussion of sharpening, tools and tooling, work holding devices and work piece orientation to emphasize grain, special chucks, and turning/sanding techniques. Approximately 37 members attended the demonstration.



Chuck’s many years of background include woodworking on boats and ordinary practical projects. He began turning in 2000, working for a custom lighting fixture manufacturer, turning spindles and other lighting accessories. He also works for a local business that produces posts for various applications: signs, lamps, porch supports, etc., using for the larger pieces a 20” swing Hapfo lathe with a 12’ bed and a motorized carriage for the tool rest and duplicator cutter head. Along the way, he turns bowls, boxes, platters, hollow forms, goblets, bottle stoppers and other objects.



[Note: Prior to the meeting, MCW made available by email some handout sheets of notes and diagrams furnished by Chuck that cover in more detail various points that he summarized during the evening program. Go to the MCW website to read or download this very useful information]

Sharpening: Prefacing his remarks, he posed the question of what do we want to achieve in sharpening our tools? A good, sharp edge, of course, a repeatable shape, and a quick and easy setup. He proceeded to describe the ways of achieving this.

He stressed the importance of grinder setup to ensure that the base is parallel to the shaft...the shaft should run true so that the wheel does too, and this is even more important if you are using a machined wheel like the CBN. He pointed out the advantages of CBN grinding wheels, which use abrasives made from cubic boron nitride (CBN), second only in hardness to diamonds. The abrasive is electroplated to a solid steel wheel to create a grinding wheel that out performs the traditional aluminum oxide wheels.



CBN Wheels are designed for grinding hardened steels like high speed steel and powder metals. Since they cut so efficiently very little pressure is needed, removing a minimum of steel to get a sharp edge. This means all your tools last longer. Chuck is a very strong proponent of these wheels. Though expensive (~\$170), their return on investment is long-life for both wheel and tools and finer edges on tools than from aluminum oxide abrasives.

Chuck pointed out that the danger of inadvertent catches and nicks that often occur from accidental contact with the sharp corners of chuck jaws can be minimized by grinding smooth corners on the



EVENING PROGRAM – Chuck Engstrom: “Back to Basics”

jaws, without impairing their functionality for work holding. Another tip he offered was keeping things as simple as possible concerning tool grind settings, recorded in a small notebook with grinder and jig settings to help in re-establishing the desired grind on a tool. He recommends using pre-measured stop blocks on the grinder base as a means of ensuring repeatability of the grind...setting tool length out of a Vari-Grind or other gouge sharpening jig. He personally uses 1 3/4" and 2 1/8" for his settings.



Concerning grinder platforms from a professional's perspective, Chuck is of the opinion that it takes too long to reset the angle of the grinder platform for each specific tool, so he keeps a couple of spare platforms whose fixed angles are permanently set to the most-used tools' requirements. Another tip he shared was that of keeping a coffee can of goodies on the back of the

grinder platform. For instance, black markers and other marking devices, a smaller can with water to cool tools while grinding them, another small can be filled part way with WD-40 and an old toothbrush applicator to clear out moisture and gunk that collects in the tool flutes from turning green wood.

If you are using a conventional stone abrasive wheel, he noted that the arbor washers supplied with Woodcraft grinders are stamped rather than machined, and as such they are not reliably perpendicular to the shaft. They can add a good bit of wobble to the irregularity already in the wheel itself. He suggests using instead the 'outer clamp' (p/n 151962-01) for a DeWalt Sliding Compound Miter Saw, which fits the Woodcraft 1725rpm 8" grinder. Spend some time balancing the wheel. A diamond wheel dresser is essential to maintain trueness of the wheel. When operating the grinder, he recommends a manual spin-up before turning on the switch to lessen the starting torque load on the motor.



Chuck showed the original Vari-Grind Jig, which has become a de facto industry standard, and one he highly recommends. He added a larger, easier-to-use plywood knob to replace the smaller original metal one. He also showed another variant of a gouge holder jig...the Hannes Michelsen model, and mentioned that David Ellsworth had designed and sells a similar one. *[Note: The aforementioned handout notes describe grinder and jig setup in substantial detail]*

He demonstrated sharpening a bowl gouge on the CBN wheel using the classic Vari-Grind jig and the associated Wolverine attachment with its "V-arm" on the base of the grinder. He also demonstrated use of the Hannes platform and jig. Between grindings, he uses the Alan Lacer diamond hone on his gouges, both on the bevel and in the flute. Despite the price, he feels that it's well worth the money (Members may remember that Mark Supik also uses the Lacer hone). But he also showed less-expensive hones that, though less capable, will work with careful effort.



Regarding sharpening scrapers, like many other professional turners, Chuck sharpens them upside down, at 80°, working below center on the grinding wheel to accomplish this. Doing

EVENING PROGRAM – Chuck Engstrom: “Back to Basics”

so, Chuck feels that a better burr is produced.

Chucks and Work Holding: Chuck showed his easily-made homemade version of Al Stirt’s “Bowl Driver.” [Note: The aforementioned pre-meeting handouts contain a dimensioned diagram of this chuck accessory]. This is a rough-out drive to facilitate balancing the grain in the bottom of bowls and platters as they are roughed out from half-log pieces. The advantages include: permitting adjustments of the work piece to balance grain; mounts in one’s usual chuck so it can stay in place for other work; less likely to slip than a spur center; and simple construction.



Using two poplar bowls, he demonstrated how to balance the symmetrical grain by using the Stirt driver. Once the bowl blanks are cut from the half-log, he uses plastic wrap on the circumference of the green blanks, instead of Anchorseal, to help keep them from cracking. He does not cover the flat surfaces in practice, and has not encountered any cracking as the blanks dry. The Stirt Bowl Driver has a center post to hang the blank when beginning the mounting process. This fits into a hole drilled into the center of the blank. The chuck also has two diametrically opposite sharpened machine bolts



(Pins) on an outer diameter through T-nuts, to allow their adjustment that tilts the blank in order to symmetrically adjust the grain pattern. Once the blank/Driver is assembled on the lathe chuck, the tailstock is brought up to hold the blank in place. The blank is oriented so that the grain runs perpendicular to the two adjust-



able pins that provide freedom in one direction. The location of the tailstock provides freedom in the perpendicular direction. Donning a face shield for protection, Chuck makes a few cuts to better expose the grain. Marking the grain line on the circumference of the blank is helpful in providing a visual reference when making adjustments. The angle in two axes is then adjusted to center the grain pattern in the final bowl. The mounting angle can be successively adjusted in two axes, as the shaping of the bowl proceeds, to obtain the desired pattern balance. After turning the outside shape, the Stirt driver is removed, and the bowl



tenon is mounted in a standard scroll chuck for hollowing and final shaping and finishing.



Sanding: Chuck showed some examples of power sanding equipment. The first tool he showed was the Metabo Angle SXE400 Random Orbit Sander (Amazon, ~\$120). It uses 3-1/2” disks and the random orbit motion minimizes swirl scratch marks. This is the first small electric angle R/O sander offered on the market and is ideal for close-quarter sanding. Sanding disks of this size and scalloped edges are hard to find, but despite that, he likes this style of sanding. He demonstrated how to use modified automotive muffler couplings, edge-sharpened at one end to punch out non-standard (and stan

EVENING PROGRAM – Chuck Engstrom: “Back to Basics”



standard) diameter sanding disks and foam mounting pads for sanders. He showed a 2" air-powered Grex angled R/O sander (sold by Woodworkers Club, ~\$105) which is lightweight and easily maneuvered into tight spaces. He also showed examples of a homemade 'passive' or 'inertial' sander that is driven by contact with the rotating work piece. Sanding mandrels are easily shop-made for much lower cost than industrially-produced types. He showed several examples of them. Using the 'muffler' cutters mentioned before, he showed how pads of foam and sandpaper disks can be produced and

glued up on a shaft to make a sanding mandrel that can be used in electric drills. Most late-model electric drills have a variable-speed trigger, but a shop-made speed control for single-speed drills can be made using a light-dimmer rheostat.



Chuck showed how improvisation in the shop can provide the turner with many practical tools at reasonable cost. Care in sharpening tools can make the turning process much more pleasant and effective.

Chuck Engstrom proved again how popular he is with our MCW in sharing a vast amount of experience with his fellow turners. The MCW's appreciation was demonstrated in turn with a rousing round of applause and thanks by MCW officers.

--Jack Enders, Secretary

Future Meetings (Mike Colella)

Please call Mike Colella at 301-942-2853 with your ideas

2014-2015 Meeting Schedule		
<p>January 9, 2014 Mark Supik</p>	<p>February 6 2014 William Peirce</p>	<p>March 13 2014 Chuck Engstrom</p>
<p>April 17 2014 * David Ellsworth</p>	<p>May 8 2014 TBD</p>	<p>June 12 2014 Warren Carpenter</p>
<p>July 10 2014 TBD</p>	<p>August 7 2014 TBD</p>	<p>September 11 2014 Molly Winton</p>
<p>October 9 2014 TBD</p>	<p>November 6 2014 TBD</p>	<p>December 11 2014 Annual Members Critique Meeting</p>
<p>January 8, 2015 TBD</p>	<p>February 5 2015 TBD</p>	<p>March 5 2015 TBD</p>

* one week later than normal

2014 Meeting and Skills Enhancement Capabilities & Schedule

Update your calendars now so you won't miss MCW meetings and
Skill Enhancement programs in 2014!

2014 MCW Meeting and Skills Enhancement Schedule			
Month	Meeting Date (7:00-9:00PM)	Skills Enhancement Day	Skills Enhancement Date (10:00AM-1:00PM)
January	Thursday, January 9 2014	Friday	January 10th
February	Thursday, February 6, 2014	Sunday	Feb 16th*
March	Thursday, March 13, 2014 *	Friday	March 14th
April	Thursday, April 17, 2014 *	Sunday	April 20th
May	Thursday, May 8, 2014	Friday	May 16th*
June	Thursday, June 12, 2014	Sunday	June 15th
July	Thursday, July 10, 2014	Friday	July 11th
August	Thursday, August 7, 2014	Sunday	No Session - Fair
September	Thursday, Sept. 11, 2014	Friday	Sept 12th
October	Thursday, October 9, 2014	Sunday	Oct 19th*
November	Thursday, November 6, 2014	Friday	Nov 21th*
December	Thursday, December 11, 2014	Sunday	Dec 14th

* One Week Later

Membership Application Form and Interest Profile

MCW Membership Application forms available at: <http://montgomerycountywoodturners.org/>

To become a member or renew, please print out, complete and either mail it or personally deliver it to Bill Autry along with a check for \$20.00, payable to Montgomery County Woodturners. New membership in the 2nd quarter is \$15, 3rd quarter \$10, and 4th quarter \$5. A Family membership is \$30.00/yr. Please ensure you include your email address, as all communications are electronic via our website and periodic email notifications.

Member Discount Program

EXOTIC LUMBER, INC. FREDERICK, MARYLAND – www.exoticlumberinc.com

With over 130 species in stock, Exotic Lumber has one of the widest selections available on the East Coast. We offer a 10% discount to MCW members. We have warehouse locations in Gaithersburg and Annapolis, where you are welcome to select from our extensive selection of turning blocks.



HARDWOODS, INC. FREDERICK, MARYLAND – hardwoodsincorporated.com

10% off on all turning stock, lumber, moldings, finishes and hardware. 10% off on all Amana router bits and blades that list for \$75.00 and under and 20% off those that list for over \$75.00. 5% off all plywood and veneer products.



2SAND.COM – 2sand.com or call 800/516-7621

2Sand.com is a coated abrasive specialist focused on fast service and fair prices providing superior sanding discs, sandpaper sheets, and woodturning tools to woodshops. MCW Member Discount is 10% (discount code available in the restricted area of the MCW Website).



ROCKVILLE WOODWORKERS CLUB – woodworkersclub.com

MCW and other club members, remember to support the Woodworkers Club by purchasing turning supplies during our meetings and save 10% on the retail price.



CRAFT SUPPLIES USA – woodturnerscatalog.com

Club members can save 10% on all finishes & disc abrasives from Craft Supplies USA.

Just mention your club name and save, all year long. You can always see current club specials by clicking on the members login button on their homepage. New 15% specials are updated on the 1st of the month, which can be accessed on the link above and going to the club member login located at the lower right portion of the page.



HARTVILLE TOOL CLUB – hartvilletool.com

Members get a 15% discount, with MCW receiving a 3% rebate. If you have not signed up for this program, let Stan Wellborn know you want to do so. He will let Hartville know you are an MCW member and sign you up. Catalogs and ordering instructions are available at meetings.





Montgomery County Woodturners - A local chapter of the American Association of Woodturners (AAW)

MCW Contact Information

OFFICERS

President	Tim Aley
President Emeritus	Bert Bleckwenn
Vice President	Gary Guenther
Treasurer	Phil Brown
Program Chair	Michael Colella
Membership	Elliot Schantz
Secretary	Jack Enders
Webmaster	Carl Powell
Newsletter Editor	Mark Verna

VOLUNTEERS

Web Albums	Tim Aley, Michael Colella, Gary Guenther
Show & Tell Recording	Richard Webster
Mentor Program	Donald Couchman
Gallery Photography	Hal Burdette, Michael Colella
Photography Assistant	Donald Van Ryk
Lending Library	Clif Poodry
Audio /Video	Mark Verna
Challenge Coordinator	Elliot Schantz
Wood Identification	Ed Karch
Candid Photography	Tim Aley, Gary Guenther
Exhibit Committee	Phil Brown, Hal Burdette, Clif Poodry
Skills Enhancement Coordinator	Bert Bleckwenn
Warrior Support Program	Don Van Ryk
Clean-Up Committee	Jack Enders, Gary Nickerson, and Paul Simon