

July 2014

Montgomery County Woodturners

<http://montgomerycountywoodturners.org>

Next Meeting and Demonstration

The next meeting will be:

Date: **THURSDAY, July 10, 2014**

Time: 7:00-9:30 PM

Location: **Woodworkers Club
11910-L Parklawn Drive
Rockville, MD 20853
(301) 984-9033**

Agenda

- 6:45 -7:00 PM Wear your name tag... meet and greet other members... register your items for Show & Tell with Richard Webster... bid on Silent Auction items... sign out and pay Clif Poodry for videos from the club's Lending Library.
- 7:00 - 7:40 Business Meeting and Show & Tell
- 7:40 - 9:15 PM Program: **Derek Weidman \$10.00 Demo Fee**
- 9:15 - 9:30 PM Pay for and retrieve your Silent Auction items, pack up, put the lathe and space back in order.

July Program - Derek Weidman by Tim Alley

We are pleased to have a real artist on the lathe join us in July! When I hear a sculptor say "Every block of wood has a statue inside it and it is the task of the sculptor to discover it" I say yea, sure, but Derek Weidman will show us how he finds that object in a piece of wood.

In this demo, Derek will go over a process similar to drawing with a wood lathe. By using the sweeping cuts of a lathe, Derek creates novel representations of flora and fauna in a visual language only the lathe speaks. A place where animals and faces are comprised of circles and curves, made almost entirely with a tool that is never thought of as one of the most powerful and unique carving tools in the shop.



July Program - Derek Weidman

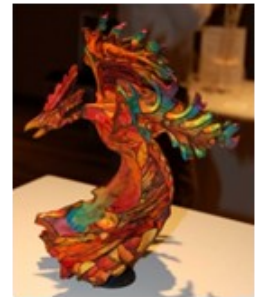


The demo begins with Derek asking the audience for an animal, which he then proceeds to turn without plan or practice. The demo is meant to not only illuminate process, but to focus on problem solving techniques and creative thinking. Finally, after the form is created, finishing practices and coloring tips are gone over.

Derek Weidman was born in 1982, and has dedicated the last seven years to exploring lathe-based sculpture. His approach involves multi-axis turning as the foundation of his work. By using the unique shaping processes of turning, Derek has created a descriptive visual language that only the lathe can speak. This carving process creates



novel representations of a wide range of subjects, from those based on human anatomy to various animal forms. Derek works from a basic question, "What would this look like if rendered through the lens of a wood lathe?" and even with the most rigorous naturalism, an honest abstraction takes place, and for each new subject that question gets answered. So from human heads to rhinos, mandrills to birds, each idea being captured in a way it has not been expressed before.



"Here is an analogy: say if I were to draw a baboon, describing its features with a great deal of realism with my right hand would be relatively simple, but now if I were to draw a baboon with my left hand, some sacrifices would be made due to the limitations my left hand has. I would describe or capture the essence of the baboon differently with each hand. Now if we take this analogy one step further, say if I were to try and 'draw' a baboon with the lathe, the results would be much different, due to how the lathe works..." (From 2010 Profile in Woodturning magazine).



Special Points of Interest:

**Montgomery County
Fair**

Lathe Sale

Inside this Issue:

Meeting & Demo	1, 2
General Announce-	3
Presidents Letter	4
Montgomery County Fair	5-9
Meeting Minuted	10
Member News	11, 12
MCW Lathe Sale	13-16
Meeting Schedule	17
Skills Enhancement & Maintenance Schedule	18
Membership and Mem- ber Discounts	19
Chapter Contacts	20

GENERAL ANOUNCEMENTS

MCW Skills Enhancement Program (Bert Bleckwenn)

SEE PAGE 18 FOR NEW SCHEDULE

MCW Picasa Picture Gallery

Pictures from last month's meeting of our featured Demonstration and MCW Events can be found on the MCW Picasa website at:

JUNE MEETING

<https://picasaweb.google.com/106891946865477202075/MCWJUNE14Meeting#>

JUNE PROGRAM

<https://picasaweb.google.com/106891946865477202075/MCWJune14Program#>

JUNE GALLERY

<https://picasaweb.google.com/106891946865477202075/MCWJune14Gallery#>

PUBLIC LIBRARY EXHIBITS

<https://picasaweb.google.com/106891946865477202075/MCWJuly14Libraries#>

Treasury Report, as of June 18, 2014

June Income:

Demonstration fee 310
Silent auction 24
Ellsworth commission sales ^{1/} 20
Total income \$354

June Expense:

Demonstrator 326.91
Total expenses \$326.91

Total funds available \$ 2,596.25

^{1/} \$70 previously reported in May, however total received was \$90.

President's Perspective July 2014 (Tim Aley)

It's Fair Time!

Yes it is fair time again! That great time of the year when you eat ice cream while watching cow judging, hear the twang of blacksmith hammers, feel the rumble of monster trucks, walk the long barns of farm animals, admire the old tractors, and experience grizzly bears! Grizzly bears? Yes, Grizzly Experience will have a show up near the Old Timers' area. Hopefully it will bring more people to our display.

I am looking forward to a great wood turning experience this year. The fair runs from August 8 to August 16 and we will need lots of turning done in those days. The fair is one of our major outreach events for the year and we really need your help. I will be asking for volunteers to cover 80 hours of fair time with two to three people for most of those hours. Please consider finding some time to volunteer. MCW is founded to promote woodturning through education to members and the public. This is an excellent way to talk woodturning to many people. Children find it fascinating, seniors remember woodshop and the pole lathe, and everyone else is curious for many assorted reasons. Hopefully we can attract a few of them to become members as well.

We also like to represent well in the arts and craft section of the exhibits. We have won many ribbons in the past and hope to do it again this year! You can see the categories at this link and use your imagination to fit into other categories like "Christmas tree ornaments – other." <http://www.mcagfair.com/wp-content/uploads/2013/05/Arts-and-Crafts-Adults.pdf>

One last thing, I would like to challenge members to make some tops to give away to kids that come by and watch woodturning. Make some and bring them to the August meeting or bring them with you when you volunteer for the booth but it would be a great way to connect with the children.

Keep Turning Safely.



Montgomery County Woodturners Turning Demonstrations at the Montgomery County Agricultural Fair – Aug 8th-16th, 2014

It's that time of year again. Join us at the Montgomery County Agricultural Fair!

It's that special time of the year again so start making plans, make some items to enter in the arts and craft, turn some tops before hand to donate, and sign up for several demonstration time periods.

This year's Theme – Country is in the Air!

Christmas Tree Ornaments

As an annual tradition, we've been asked again to make ornaments for the Old Timer's submission to the fair's Christmas Tree Decorating Contest. Our contributions have greatly helped in the Old Timers winning the Christmas Tree Contest for the last two year. Any ornaments on the small scale are appropriate such as tops, snowman, and icicles, carved Santa or other holiday ornaments. You can either turn an ornament before hand and give to Tim Aley at the August 7th MCW meeting or turn an ornament while demonstrating at the fair.

Details for participating in this year's fair as a MCW member

We have another great opportunity for MCW members to conduct daily turning demonstrations at the upcoming Montgomery County Agricultural Fair August 8-16 at the fairgrounds located in Gaithersburg, MD. We've had a great MCW volunteer turnout the past few years and hope we can continue with continued member participation this year.

The Woodworkers Club will be joining us again this year in the adjoining 10'x10' area of the shared 10'x20' tent. We will be located in the same great location in the Old Timers area as last year with the improved tent arrangement with closable side panels all around to keep out any inclement weather.

We are staffing each day from 10:00AM-8:00pm with shifts consisting hours from 10-3 or 3-8 with flexibility to accommodate individual schedules. Each shift needs to have two MCW members present. In addition, the Woodworkers Club will be staffing each day with two of their staff demonstrating traditional woodworking as well.

MCW Fair Committee – Need Volunteers

Again this year, we would like to set up a small committee of 3-4 members to assist with the setup and takedown of the MCW fair demonstration area. If you are interested and willing to volunteer, please contact Tim Aley at Taley16922@aol.com or call 301 706 6291

Montgomery County Woodturners Turning Demonstrations at the Montgomery County Agricultural Fair – Aug 8th-16th, 2014

MCW Fair Volunteers

We need to have MCW members to volunteer for demonstration slots for the 10-3 and 3-8 time slots from Saturday, August 8th thru Saturday, August 16th. You're encouraged to sign up for multiple slots. Given work schedules and other personal commitments. The time slots are very flexible, so if you need to come or leave an hour later or early, that is fine. Just specify any variations when you sign up. We will also need members to assist with setup and takedown, so sign up, if you can help with that as well. You can sign up now by emailing Tim Aley or at the July or August MCW meetings. In addition, a separate email from Tim Aley will be sent out also asking you to sign up during July and early August. Bert will provide final schedule confirmations just prior to the start of the fair with the free fair passes handed out at the August 7th meeting.

A Reminder: You must be an AAW member to demonstrate at the fair.

Fair Dates & Times:

Fair dates: Friday, August 8th through Saturday, August 16th, 2013

Fair Hours are 10:00 AM to midnight each day except for opening day on Friday, August 8th with an opening time of 3:00PM

We demonstrate in the Old Timers area, which is open on Sunday starting at noon, August 10th through Saturday, August 16th. We actually start demonstrating on Saturday, August 9th.

MCW Key Dates & Time:

- **MCW and Woodworkers Club Setup:** Friday, August 8th 10:00am – 3:00pm
- **MCW & WC demonstrations:** Saturday, August 9th – Saturday, August 16th
 - o 10:00am-3:00pm - Morning Shift
 - o 3:00pm-8:00pm - Afternoon Shift

MCW and Woodworkers Club Shut Down: Sunday, August 17th, 10:00-12:00

Location:

Montgomery County Fairgrounds, Gaithersburg, MD

For additional fair details, directions, maps, etc. check them out at: <http://www.mcagfair.com/>

Montgomery County Woodturners Turning Demonstrations at the Montgomery County Agricultural Fair – Aug 8th-16th, 2014

Demonstration format:

We will be set up under a 10'x20' tented area with a large shade tree providing additional coverage. Our location is in a high traffic and prominent area directly across from the Blacksmith's area and the Old Timers Building.

Members of each two-person team can alternate between demonstrating and interacting with the public. In addition, we will either have the Spring Pole Lathe and/or the Great Wheel Lathe available for doing basic spindle turning demonstrations.

Demonstrations consist of explaining the basic concept of turning to the audience, any history or perspective of turning that you can provide and lots of Q&A along with very basic demonstration techniques of turning. The focus is on demonstrating and engaging the audience and not necessarily trying to complete any finished objects. So, you don't need to be an advanced turner at all. Turning can be anything you like. We will have 2-3" thick by 20" billets available for use on the Spring Pole or Great Wheel lathe as well as a variety of smaller bowl blanks suitable for the Midi-laths. You can also bring your own wood and/or project to demonstrate on as well.

Actual Demonstration Suggestions:

Keep it simple. Most observers will be interested in the basics.

Open with a brief history/perspective of turning.

Keep the dialogue going – Plan to spend more time talking than turning.

Encourage Q&A – This should be educational and informative.

Talk about MCW – who we are, what we do, encourage attending a meeting, if they are interested

We will have MCW brochures available for the taking

What to Turn:

Whatever you are comfortable with... It doesn't have to be a finished product

Between-centers spindle turning will be the norm on the Spring Pole Lathe or the Great Wheel Lathe as the headstock arrangement is set up for only spindle turning.

A chair rung with a series of beads and coves is likely a good, basic demonstration, a tool handle or a gavel will suffice along with some very basic skew work.

Use the green wood which should be really easy to turn for demonstration purposes and less challenging when talking to the audience.

Montgomery County Woodturners Turning Demonstrations at the Montgomery County Agricultural Fair – Aug 8th-16th, 2014

If you want to get fancy, turn a continuous stream of shavings from a piece of green wood to impress the audience, which should be easy with any of the green wood.

What will be provided on site:

One Jet Midi-lathe, One Nova DVR Lathe and the Spring Pole Lathe and/or Great Wheel Lathe will be set up under half of the 10'x20 tent. The Woodworkers Club will be setting up two workbenches in the other half of the 10'x20' tent area.

A sharpening station and sharpening accessories will be available.

A basic set of turning tools, chucks, accessories and supplies for the lathes will be available.

Face shields and safety glasses to promote good safety habits

A portable, light-weight display table will be set up and taken down each day for the display of sample turned objects, and MCW information.

Large, lockable tool boxes will be on site for the storage of most tools, accessories, supplies and loose parts. While all the necessary tools will be provided and stored in the tool boxes, you are encourage to bring your own favorite turning tools and accessories that you can easily carry.

Several sitting chairs will also be available for your comfort.

What volunteers will likely want to bring:

Bring your own set of basic turning tools (rouging gouge, spindle gouge, detail gouge, bowl gouge, scraper, parting chisel, and skew chisel should be sufficient) and a calipers to demonstrate sizing techniques.

Diamond stone or slip stone to touch up your tools might be helpful. Since most of the wood will be green, there should be limited need to even touch up your tools.

There will be rolls of sandpaper (150, 240, 320 grit) available for your use. Use the shavings to burnish the work.

There will be some limited amounts of finishing supplies such as some BLO and wax for very basic finishing and pen-turner's finish.

Bring a bottle of water or plan to purchase refreshing lemonade at one of the nearby stands. There is also a free tea and lemonade stand for volunteers with badges

Montgomery County Woodturners Turning Demonstrations at the Montgomery County Agricultural Fair – Aug 8th-16th, 2014

Demonstration Time Slots and Duration

While the fair is open from 10:00 AM to mid-night, the mid-day and early evening time period up to about 8:00pm is the prime traffic time. Demonstration periods have been set up for 10AM-3:00PM and 3:00PM-8:00PM.

Given many members' work schedules and other commitments, time slots are very flexible, it's OK to arrive a little later and closer earlier, if no traffic is occurring. If you have a lot of traffic at closing, it's your discretion how long you continue demonstrating.

Demonstrators are asked to take set up or take down the display table, sample turned objects, and MCW brochures. The large, Stanley storage chests are used to store the items. **A key for the Stanley Lockable Storage Boxes will be hidden with the location provided to all the volunteers for accessing and storing items.**

Other points of interest:

Passes – Free day passes will be provided at the August monthly MCW Meeting since we are volunteer demonstrators. Some passes may allow parking, but it tends to be at the opposite end of where we are demonstrating. The best approach is to park at the designated Lake Forest Mall area and take the shuttle to the Chestnut Street Entrance. The Shuttle Bus will be dropping you off roughly a block away from where we are demonstrating. Plan what tools and items you plan to bring so you can carry them on the shuttle bus.

Parking – There is some parking on site depending on the traffic and your specific pass restrictions as well as free parking and shuttle service from Lake Forest Mall.

Liability – The Old Timers Group who hosts us has liability coverage. In addition, since this will be an MCW sponsored event, members with AAW membership will also be covered by AAW liability insurance.

MCW Meeting Minutes – June 12, 2014 (Tim Aley)

President Tim Aley called the meeting to order at 7:02 with 34 members and guests in attendance. Several guests introduced themselves including Phil Baker from Kent, England.

Tim mentioned future meetings with guest demonstrators, including August 7- Allen Alexopoulos; Sept 11 - Molly Winton; and November – Jimmy Clewes.

The library exhibit is installed at Davis in June with many more scheduled.

Tim noted the small TV mounted on the wall since the last meeting and mentioned how happy he was with the A/V setup. He called Bert Bleckwenn up and presented him with a certificate of appreciation for all the time he has put in to get the A/V system working. Bert received it to a nice round of applause. Matt Radke ran the video and Tim mentioned that Benji Omisore has volunteered to be back-up on the video.

MCW Maintenance Sessions are now combined with Skill Enhancement, to be held on Sunday, June 8th from 10:00am until 1:30PM (the normal Skill Enhancement time slot). With the sessions being combined, the total session time will be 3-1/2 hours. We will start the session with our monthly maintenance effort at 10:00am and then move into skills enhancement around 10:30 to 10:45am.

Tim mentioned that the Montgomery County Fair is coming up in August and that we will need volunteers and sent out the first round of volunteer sign ups. Tim is taking over for Bert and is looking for someone to help manage this with him. Bert is hard to replace. Volunteer positions are needed for setup/take down and daily demonstration helpers. We may need to stay later due to the Fair's planned Grizzly Experience show at 8:00pm.

Don Van Ryk gave the Wounded Warrior Project Update. The last session was today and it was well attended by both warriors and MCW. For further information or to volunteer, please contact Don Van Ryk (dvanryk@aol.com).

The proposed Mid Atlantic symposium (MD, DE, PA) in Lancaster area will be in 2016. We have chosen not to sponsor but Mid-MD committed to doing it and there are 10 clubs sponsoring.

Bob Grudberg collected demo fees. Richard Webster managed the Show and Tell table AND trucked pieces for Mike Colella who photographed the pieces. Gary Guenther and Tim Aley shot candid photos.

Mike Twenty was not able to make the meeting so Bring Back Challenge was postponed until the July meeting. Bill Long ran the Show & Tell. There were several Mallets made for the challenge. Gary Guenther introduced Warren Carpenter and gave him a wooden badge with his name on it, making him an "honorary" member of MCW.

Bill Long was broom man cleaning up all the shavings and many helped put the chairs away.

News about our Members (Phil Brown)

Member News

Tim Aley and **Jerry Kaplan** are believed to be the only MCW members who attended the annual AAW Symposium in Phoenix, AZ in June.

Mike Colella attended the Alain Mailland sea-forms class at Arrowmont, June 22-28.
www.arrowmont.org/workshops-and-classes

Jerry Kaplan and **Phil Brown** hosted six Windgate International Turning Exchange resident fellows June 8th to 11th for their visits to five local collections and two private museums. Pictures from their time here are posted under days 7 to 10 at internationalturningexchange.wordpress.com/

Clif Poodry teaches *Beginning Bowl Turning* during the evening of Aug. 28-29; and *Introduction to the Lathe* July 8-9, Aug. 4-5, and Sept 29-30 at the Woodworkers Club. A minimum of three students are required to conduct a class. To register, call 301-984-9033, or go to classes at: <http://woodworkersclub.com/classes/>

Craft Forms 2014

The 20th International Juried Exhibition of Contemporary Craft will be up December 5, 2014 through January 31, 2015 at the Wayne Art Center in Wayne, PA. The entry deadline is September 12th. See www.craftformsentry.org/ for more information and the prospectus.

Wood Sculptural Exhibit by Phil Brown

I sometimes find the connections and influences of work by a craft artist on others who follow to be of interest. Some of you may be acquainted with the wonderful carved spoons by Norm Sartorius: www.normsartorius.com/. Norm has admired and studied the freeform sculpture of Emil Milan, and has been a principal curator in organizing this exhibit: **Emil Milan: Mid-century Designer Craftsman**, in the Henry Gallery at Penn State Great Valley, Malvern, PA. The exhibit is up until September 26, 2014, as is open to the public: Monday through Friday, 9:00 a.m. – 5:00 p.m.. More information is in the second entry at: <http://sgps.psu.edu/thegallery/default.ashx>.

In the 1960's, long before becoming a woodturner, I remember admiring the bowls and other work of Emil Milan at a Folk Life Festival on the mall, and at the same time enjoyed a continuing friendship with a co-worker at USDA who had previously apprenticed with Milan.



Don't be shy! Promote yourself. Tell us about your woodturning activities in the MCW Newsletter. Send your information by the 25th of the month to Phil Brown, philbrown@comcast.net, or call 301-767-9863.

News about our Members (Phil Brown)

MCW MEMBER DISPLAYS



At the Kensington Park Library (left) are pieces by **Tim Aley, Phil Brown, Bob Browning, Bert Bleckwenn, Bob Grudberg, Gary Guenther, Ed Karch, Russ Iler, Paul Mazzi, Jeff Tate, and Stan Wellborn.**

The Twinbrook Library is displaying (right) work by **Tim Aley, Bob Browning, Bert Bleckwenn, David Fry, Bob Grudberg, Gary Guenther, Ed Karch, Russ Iler, Bill Long, Richard Webster, and Stan Wellborn.** In August a modest display will be up at the Aspin Hill Library.



Special Lathe Sale at the July 10th MCW Meeting (Bert Bleckwenn)

This is a recap of the MCW and Woodworkers Club Special Lathe Sale of Seven Used MCW and WC Lathes at the MCW July 10 Meeting. **Additional personal observations are added at the end of this article for perspective buyer's consideration.**

With The Woodworkers Club (WC) continuing to upgrade and enhance the Turning Area and MCW finding that most of our midi-lathes are no longer being utilized, MCW and The Woodworkers Club are moving forward with selling several of the midi-lathes (MCW's Fisch, Delta, General midi-lathes and WC's Jet and Rikon midi-lathes) and two of WC's Nova DVR lathes. MCW will retain the existing Jet midi-lathe for our area demonstrations. After discussion among the MCW officers and The Woodworkers Club we have agreed to the following procedure for offering the sale of the lathes to our MCW members and WC staff.

If you are interested in participating in the sale, please email a reply directly to Bert Bleckwenn at my user id (bableck@gmail.com) so we will have a perspective on what the level of interest will be for the meeting.

Used Lathe Sale Procedures

MCW will conduct the lathe sale at the next MCW meeting on July 10th

Any interested MCW members or WC Staff can submit their names at the start of the meeting into one of two separate pools:

Pool Number One is for any MCW member or WC Staff who self-declare that they have no functioning lathe and will have an exclusive opportunity to obtain one of the offered lathes in the first two rounds of drawings. After the first two rounds of drawings, all names in Pool Number One will be added to Pool Number Two so there will be additional opportunities to still draw a lathe.

Pool Number Two is for any MCW member or WC staff that is interested in one of the offered lathes. Starting with the third round of drawings all names in the combined pools will have the opportunity for their name to be drawn in all subsequent rounds.

Only MCW members and WC staff are eligible.

MCW and WC have each established a set price for each individual lathe. MCW's pricing is roughly based on 50% of the original full retail price.

MCW will conduct a combined sale during the July 10th MCW meeting using the following procedures:

No separate bids or offers will be accepted prior to the sales event at the July 10th MCW meeting.

If an MCW member or WC staff is interested in buying any of the lathes, they put their name into one of the two pools.

MCW will conduct a drawing of interested members from the pool where the

Special Lathe Sale at the July 10th MCW Meeting (Bert Bleckwenn)

first name drawn from the first pool can then buy any of the lathes at its set price, but only one lathe.

Once the first lathe is spoken for, a second drawing from the first pool is held and the opportunity to purchase is repeated

After the first two drawings, the remaining names in Pool Number One will be added to Pool Number Two.

Starting with the third drawing using the combined set of names, each subsequent drawn name has the opportunity to buy any of the remaining offered lathes or pass (if the only lathe they are interested in has already sold), and so forth.

This would keep going until we either run out of names or lathes.

All lathes offered for sale, though used, are operational and available for inspection prior to the meeting.

All sales are final

Each lathe includes the currently attached stand, and basic accessories (drive centers, knockout bars, etc. Accessories will be packaged with the lathe prior to the start of the MCW meeting. The Fisch lathe also includes an extension bed, but without attachment bolts. The two Nova DVR lathes do not have the outboard attachment. Manuals are included where available.

If MCW doesn't sell all their MCW-owned lathes, then we will extend the sales offer to other area turning clubs, and if still not successful, offer them on Craigslist/Ebay. The Woodworkers Club will have its own procedures for lathes they do not sell.

Lathes Offered For Sale:

MCW - Delta Midi-lathe - \$400 (46-460), Delta Stand - 1 HP electronic variable speed motor with three pulley setting providing 25-4000 RPM, 24 position indexing capability, 12.5" swing over bed, 9" swing over tool rest, 16.5" between centers, manual included.

MCW - General Midi-lathe - \$400 (Model #25-114QC MI - Maxi-Lathe VC) General Stand (#25-195) - 3-speed belt option with 3/4 HP variable speed motor 250-3600rpm, 24 position indexing capability, 17" between centers, 14" over lathe bed, 10.75" swing over tool rest, 1"x8tpi spindle, 93 lbs for lathe, manual available online

MCW - Fisch Midi-lathe - \$400 (TC 90-100), Fisch Extension Bed, Upgraded to variable Speed with 1/2 HP PSI motor and speed controller kit, Jet Stand. The extension bed comes without attachment bolts, but they can be purchased at a local home improvement center. Manual included.

Special Lathe Sale at the July 10th MCW Meeting (Bert Bleckwenn)

WC - Rikon Midi-lathe, with MCW-owned Jet Stand - \$250

WC - Jet Midi-lathe (JWL-1220VS), with Jet Stand - \$325

WC - Two existing used Nova DVRs with leg sets - \$1000 each

The Woodworkers Club also currently has new Nova DVR 2024 Lathes at 20% OFF (153529 Retail value of \$3149.99) with a Free Outboard Tool Rest (125761 Retail Value of \$294.99) for a total discounted price of \$2519.99 Full warranty is included.

TERMS: Check or Cash only payable to either Montgomery County Woodturners or The Woodworkers Club. Sales are final, No warranty on any of the used lathe (Fisch, General, Delta, Rikon, Jet, Nova DVR).

My Perspective on the Lathes (Bert Bleckwenn opinion only)

To help MCW members with minimal experience and exposure to lathe features and trade-offs, I offer my own perspective based on actual use and observations of the lathes being offered for sale:

First, all of the lathes are a good buy for new or novice turners. I would consider buying any of them. They are all variable speed, which is an added plus. The Delta, General and two Nova DVRs have 24 position indexing capabilities that is nice for on the lathe carving/surface decoration. The Fisch has extra spindle capacity.

Given the heavy construction of all the lathes, I would not be that concerned about usage level as The Woodworkers Club and MCW has upgraded, maintained and repaired several of them (motors, controllers, bushings, stands, etc.).

For the very frugal beginning turner, the obvious choices would be the WC-Rikon at \$250 or the WC-Jet at \$325. The Rikon has seen very minimal use while the Jet has been one of the heaviest used lathes of the lot. The primary restriction is the Rikon is ½ HP while the Jet is ¾ HP and both have the smallest between center and over the bed limitations. If you want to do bowls greater than 5-6" diameters, then I would move up to the larger capacity HP midi-lathes or the Nova DVRs.

For larger capacity needs at a very reasonable price, the Delta, General and Fisch would do well for a broader range of turning at \$400 each. The Delta has a 1 HP motor while the General is at ¾HP, but the between centers and over the bed capacity limits on the Delta are smaller than the Delta. Larger bowls can be turned with the General or the Delta lathes. The Fisch has a ½ HP variable speed PSI replacement motor, but with the additional bed extension, it offers a much longer capacity for a wider variety of spindle turning work.

If you want to do extensive bowl turning and funds are less of an issue, then I

Special Lathe Sale at the July 10th MCW Meeting (Bert Bleckwenn)

would definitely go with one of the two Nova DVR lathes at \$1000 each. Additional spindle length capacity can easily be added with a 20" extension bed as well.

Individual Lathe Functional Observations:

Delta – solid machine, nice ergonomics. Solid and functional stand, 1 HP motor, very minimal use

General – largest midi-lathe turning distance capacity. Stand needs to be tightened, easy to add weight to stand, very minimal use

Fisch – basic, functional lathe. Expanded spindle capacity over all other lathes, no longer manufactured.

Rikon – least used of all lathes, good basic functional lathe.

Jet – most heavily used. Solid Jet quality

Nova DVR – very nice lathes. I have older non-DVR Nova lathe and am very happy with Nova capabilities and capacities. DVR technology has experienced some controller problems but replaceable.

Future Meetings (Mike Colella)

Please call Mike Colella at 301-942-2853 with your ideas

2014-2015 Meeting Schedule		
January 9, 2014 Mark Supik	February 6 2014 William Peirce	March 13 2014 Chuck Engstrom
April 17 2014 * David Ellsworth	May 8 2014 TBD	June 12 2014 Warren Carpenter
July 10 2014 Derek Weidman	August 7 2014 Allen Alexopulos	September 11 2014 Molly Winton
October 8 2014 TBD	November 6 2014 Jimmy Clewes	December 11 2014 Margaret Lospinuso with Potluck
January 8, 2015 Panel Critique	February 12, 2015 TBD	March 11, 2015 ** Mike Sorge

* one week later than normal

** Wednesday

2014 Skills Enhancement and Maintenance Schedule

Skills Enhancement & Maintenance Sessions	Day (Alternating Fridays and Sundays)
January 10th	Friday
Feb 16th	Sunday
March 21st	Friday
April 6th	Sunday
May 16th	Friday
June 8th	Sunday
July 11th	Friday
No Session - Fair	n/a
Sept 12th	Friday
Oct 19th	Sunday
Nov 21th	Friday
Dec 14th	Sunday

Membership Application Form and Interest Profile

MCW Membership Application forms available at: <http://montgomerycountywoodturners.org/>

To become a member or renew, please print out, complete and either mail it or personally deliver it to Bill Autry along with a check for \$20.00, payable to Montgomery County Woodturners. New membership in the 2nd quarter is \$15, 3rd quarter \$10, and 4th quarter \$5. A Family membership is \$30.00/yr. Please ensure you include your email address, as all communications are electronic via our website and periodic email notifications.

Member Discount Program

EXOTIC LUMBER, INC. FREDERICK, MARYLAND – www.exoticlumberinc.com

With over 130 species in stock, Exotic Lumber has one of the widest selections available on the East Coast. We offer a 10% discount to MCW members. We have warehouse locations in Gaithersburg and Annapolis, where you are welcome to select from our extensive selection of turning blocks.



HARDWOODS, INC. FREDERICK, MARYLAND – hardwoodsincorporated.com

10% off on all turning stock, lumber, moldings, finishes and hardware. 10% off on all Amana router bits and blades that list for \$75.00 and under and 20% off those that list for over \$75.00. 5% off all plywood and veneer products.



2SAND.COM – 2sand.com or call 800/516-7621

2Sand.com is a coated abrasive specialist focused on fast service and fair prices providing superior sanding discs, sandpaper sheets, and woodturning tools to woodshops. MCW Member Discount is 10% (discount code available in the restricted area of the MCW Website).



ROCKVILLE WOODWORKERS CLUB – woodworkersclub.com

MCW and other club members, remember to support the Woodworkers Club by purchasing turning supplies during our meetings and save 10% on the retail price.



CRAFT SUPPLIES USA – woodturnerscatalog.com

Club members can save 10% on all finishes & disc abrasives from Craft Supplies USA.

Just mention your club name and save, all year long. You can always see current club specials by clicking on the members login button on their homepage. New 15% specials are updated on the 1st of the month, which can be accessed on the link above and going to the club member login located at the lower right portion of the page.



HARTVILLE TOOL CLUB – hartvilletool.com

Members get a 15% discount, with MCW receiving a 3% rebate. If you have not signed up for this program, let Stan Wellborn know you want to do so. He will let Hartville know you are an MCW member and sign you up. Catalogs and ordering instructions are available at meetings.





Montgomery County Woodturners - A local chapter of the American Association of Woodturners (AAW)

MCW Contact Information

OFFICERS

President	Tim Aley
President Emeritus	Bert Bleckwenn
Vice President	Gary Guenther
Treasurer	Phil Brown
Program Chair	Michael Colella
Membership	Elliot Schantz
Secretary	Jack Enders
Webmaster	Carl Powell
Newsletter Editor	Mark Verna

VOLUNTEERS

Web Albums	Tim Aley, Michael Colella, Gary Guenther
Show & Tell Recording	Richard Webster
Mentor Program	Donald Couchman
Gallery Photography	Michael Colella, Jeff Tate, Hal Burdette
Photography Assistant	
Lending Library	Clif Poodry
Audio /Video	Matt Radtke, Bert Bleckwenn
Challenge Coordinator	Elliot Schantz
Wood Identification	Ed Karch
Candid Photography	Tim Aley, Gary Guenther
Exhibit Committee	Phil Brown, Hal Burdette, Russ Iler
Skills Enhancement Coordinator	Bert Bleckwenn
Warrior Support Program	Don Van Ryk
Clean-Up Committee	Paul Simon