

August 2014

Montgomery County Woodturners

<http://montgomerycountywoodturners.org>

Next Meeting and Demonstration

The next meeting will be:

Date: **THURSDAY, August 7, 2014**

Time: 7:00-9:30 PM

Location: **Woodworkers Club
11910-L Parklawn Drive
Rockville, MD 20853
(301) 984-9033**

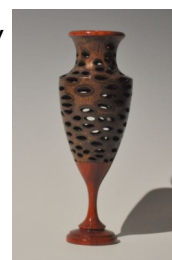
Agenda

- 6:45 -7:00 PM Wear your name tag... meet and greet other members... register your items for Show & Tell with Richard Webster... bid on Silent Auction items... sign out and pay Clif Poodry for videos from the club's Lending Library.
- 7:00 - 7:40 Business Meeting and Show & Tell
- 7:40 - 9:15 PM Program: **Allen Alexopulos** (\$5 demo fee.)
- 9:15 - 9:30 PM Pay for and retrieve your Silent Auction items, pack up, put the lathe and space back in order.

August Program - Allen Alexopulos

Our demonstrator for August is Allen Alexopulos. You may remember Allen's April 2011 MCW demo of turning a banksia pod into a pedestal vase. (You can review that demo at

<https://picasaweb.google.com/106891946865477202075/MCWApril11Demo#>.) [



Allen has been creating custom woodturning art in his shop in Annapolis, Maryland since 2001. His artistic goal is to highlight as much of the natural figure, texture and color from the wood as possible. Simple shapes combined with graceful curvatures amplify the beauty of his turnings. Although Allen has explored many areas of woodturning, his principal repertoire includes natural-edged vessels, lidded boxes with ornate finials, hollow forms, and formal vessels.

August Program - Allen Alexopoulos

Allen has created turned pieces that are included in the State of Maryland and City of Annapolis Archives, the on-line Wye Oak Gallery, and commercial sites like Teknatool in New Zealand and Exotic Lumber in Annapolis.

Allen's works can be seen at his LatheScapes web site (www.lathescapes.com). Allen is a member of the Chesapeake Woodturners, the Maryland Federation of Art (MFA), and the American Association of Woodturners. He has also taught several woodturning courses at Maryland Hall for the Creative Arts. Allen's impressive BLM burl platter, "Atariak", recently won the First Place award at the MFA multi-media show at Gallery B in Bethesda.



For our August demonstration, Allen will show us how to make a complex-hyperbolic candlestick. It is easy to get so wrapped up trying to understand how to turn complicated vessels with ornate carving and surface texturing that we lose sight of the beauty of simple shapes. During this demonstration Allen will explore some of the concepts controlling the turning of candlesticks that incorporate some significant alterations to the hyperbolic shape pioneered by the late Rude Olsonik. Turning candlesticks like these can be a challenging task. Allen will discuss design and demonstrate a sequence that permits many possible shapes to be developed. The process allows for the base to be hollowed to receive a steel weight and for a concave top. Liberal use of a scroll chuck is made. Discussion of turning stock selection and finishing techniques will be included.

There will be a \$5 demo fee.

At this meeting, we will also be raffling off the David Ellsworth NE demo bowl, so you really don't want to miss this one.

Special Points of Interest:

Montgomery County Fair

Inside this Issue:

Meeting & Demo	1, 2
General Announce-	3
Presidents Letter	4
Montgomery County Fair	5-9
Meeting Minutes	10-14
Member News	15,16
Evening Program	17,18
Meeting Schedule	19
Skills Enhancement & Maintenance Schedule	20
Membership and Mem- ber Discounts	21
Chapter Contacts	22

GENERAL ANOUNCEMENTS

MCW Skills Enhancement Program (Bert Bleckwenn)

SEE PAGE 20 FOR NEW SCHEDULE

MCW Picasa Picture Gallery

Pictures from last month's meeting of our featured Demonstration and MCW Events can be found on the MCW Picasa website at:

JULY MEETING

<https://picasaweb.google.com/106891946865477202075/MCWJuly14Meeting#>

JULY PROGRAM

<https://picasaweb.google.com/106891946865477202075/MCWJuly14Program#>

JULY GALLERY

<https://picasaweb.google.com/106891946865477202075/MCWJuly14Gallery#>

Treasury Report, as of Aug 1, 2014

July Income:

Demonstration fee collected	289
Silent auction	75
Norway maple benefit	21
Weidman class fees	650
Lathe sales	<u>1,200</u>
Total income	\$ 2,235

July Expense:

Demonstrator-Weidman	300.00
Weidman-WC space rental	350.00
Weidman class refunds ^{1/}	0.00
Camcorder & other equip	<u>498.93</u>
Total expenses	\$ 1,148.93

Total funds available	\$ 3,682.32
------------------------------	--------------------

1/ Refunds will be made in August.

President's Perspective August 2014 (Tim Aley)

I am currently in the process of trying to get us all ready for the Montgomery County Ag Fair. Setting this up is new to me but I believe that it is important to show everyone what we do! We are a talented group doing fun and interesting things and I want everyone to know it, maybe even join us!

While I was in Phoenix I saw many wonderful things but the back of the current American Woodturner has reminded me of the Chapter Collaborative Challenge (C3). The C3 is a chapter project that is entered in a contest with other chapters in one of several categories. Since the symposium is in Pittsburgh next year I think it is an excellent time to show off what we can do!



I organized a collaborative project for the 2011 25th symposium and it was a lot of fun. I would like to gather some design ideas, and see if one of our members might like to coordinate the group effort. The theme should be based on MCW or more likely Pittsburgh. More information can be found at <http://www.woodturner.org/?page=C3> . So let's show everyone what MCW can do! Show up at the fair, enter items in the fair, and let's get an MCW C3 entry!

Montgomery County Woodturners Turning Demonstrations at the Montgomery County Agricultural Fair – Aug 8th-16th, 2014

It's that time of year again. Join us at the Montgomery County Agricultural Fair!

It's that special time of the year again so start making plans, make some items to enter in the arts and craft, turn some tops before hand to donate, and sign up for several demonstration time periods.

This year's Theme – Country is in the Air!

Christmas Tree Ornaments

As an annual tradition, we've been asked again to make ornaments for the Old Timer's submission to the fair's Christmas Tree Decorating Contest. Our contributions have greatly helped in the Old Timers winning the Christmas Tree Contest for the last two year. Any ornaments on the small scale are appropriate such as tops, snowman, and icicles, carved Santa or other holiday ornaments. You can either turn an ornament before hand and give to Tim Aley at the August 7th MCW meeting or turn an ornament while demonstrating at the fair.

Details for participating in this year's fair as a MCW member

We have another great opportunity for MCW members to conduct daily turning demonstrations at the upcoming Montgomery County Agricultural Fair August 8-16 at the fairgrounds located in Gaithersburg, MD. We've had a great MCW volunteer turnout the past few years and hope we can continue with continued member participation this year.

The Woodworkers Club will be joining us again this year in the adjoining 10'x10' area of the shared 10'x20' tent. We will be located in the same great location in the Old Timers area as last year with the improved tent arrangement with closable side panels all around to keep out any inclement weather.

We are staffing each day from 10:00AM-8:00pm with shifts consisting hours from 10-3 or 3-8 with flexibility to accommodate individual schedules. Each shift needs to have two MCW members present. In addition, the Woodworkers Club will be staffing each day with two of their staff demonstrating traditional woodworking as well.

MCW Fair Committee – Need Volunteers

Again this year, we would like to set up a small committee of 3-4 members to assist with the setup and takedown of the MCW fair demonstration area. If you are interested and willing to volunteer, please contact Tim Aley at Taley16922@aol.com or call 301 706 6291

Montgomery County Woodturners Turning Demonstrations at the Montgomery County Agricultural Fair – Aug 8th-16th, 2014

MCW Fair Volunteers

We need to have MCW members to volunteer for demonstration slots for the 10-3 and 3-8 time slots from Saturday, August 8th thru Saturday, August 16th. You're encouraged to sign up for multiple slots. Given work schedules and other personal commitments. The time slots are very flexible, so if you need to come or leave an hour later or early, that is fine. Just specify any variations when you sign up. We will also need members to assist with setup and takedown, so sign up, if you can help with that as well. You can sign up now by emailing Tim Aley or at the July or August MCW meetings. In addition, a separate email from Tim Aley will be sent out also asking you to sign up during July and early August. Bert will provide final schedule confirmations just prior to the start of the fair with the free fair passes handed out at the August 7th meeting.

A Reminder: You must be an AAW member to demonstrate at the fair.

Fair Dates & Times:

Fair dates: Friday, August 8th through Saturday, August 16th, 2013

Fair Hours are 10:00 AM to midnight each day except for opening day on Friday, August 8th with an opening time of 3:00PM

We demonstrate in the Old Timers area, which is open on Sunday starting at noon, August 10th through Saturday, August 16th. We actually start demonstrating on Saturday, August 9th.

MCW Key Dates & Time:

- **MCW and Woodworkers Club Setup:** Friday, August 8th 10:00am – 3:00pm
- **MCW & WC demonstrations:** Saturday, August 9th – Saturday, August 16th
 - o 10:00am-3:00pm - Morning Shift
 - o 3:00pm-8:00pm - Afternoon Shift

MCW and Woodworkers Club Shut Down: Sunday, August 17th, 10:00-12:00

Location:

Montgomery County Fairgrounds, Gaithersburg, MD

For additional fair details, directions, maps, etc. check them out at: <http://www.mcagfair.com/>

Montgomery County Woodturners Turning Demonstrations at the Montgomery County Agricultural Fair – Aug 8th-16th, 2014

Demonstration format:

We will be set up under a 10'x20' tented area with a large shade tree providing additional coverage. Our location is in a high traffic and prominent area directly across from the Blacksmith's area and the Old Timers Building.

Members of each two-person team can alternate between demonstrating and interacting with the public. In addition, we will either have the Spring Pole Lathe and/or the Great Wheel Lathe available for doing basic spindle turning demonstrations.

Demonstrations consist of explaining the basic concept of turning to the audience, any history or perspective of turning that you can provide and lots of Q&A along with very basic demonstration techniques of turning. The focus is on demonstrating and engaging the audience and not necessarily trying to complete any finished objects. So, you don't need to be an advanced turner at all. Turning can be anything you like. We will have 2-3" thick by 20" billets available for use on the Spring Pole or Great Wheel lathe as well as a variety of smaller bowl blanks suitable for the Midi-laths. You can also bring your own wood and/or project to demonstrate on as well.

Actual Demonstration Suggestions:

Keep it simple. Most observers will be interested in the basics.

Open with a brief history/perspective of turning.

Keep the dialogue going – Plan to spend more time talking than turning.

Encourage Q&A – This should be educational and informative.

Talk about MCW – who we are, what we do, encourage attending a meeting, if they are interested

We will have MCW brochures available for the taking

What to Turn:

Whatever you are comfortable with... It doesn't have to be a finished product

Between-centers spindle turning will be the norm on the Spring Pole Lathe or the Great Wheel Lathe as the headstock arrangement is set up for only spindle turning.

A chair rung with a series of beads and coves is likely a good, basic demonstration, a tool handle or a gavel will suffice along with some very basic skew work.

Use the green wood which should be really easy to turn for demonstration purposes and less challenging when talking to the audience.

Montgomery County Woodturners Turning Demonstrations at the Montgomery County Agricultural Fair – Aug 8th-16th, 2014

If you want to get fancy, turn a continuous stream of shavings from a piece of green wood to impress the audience, which should be easy with any of the green wood.

What will be provided on site:

One Jet Midi-lathe, One Nova DVR Lathe and the Spring Pole Lathe and/or Great Wheel Lathe will be set up under half of the 10'x20 tent. The Woodworkers Club will be setting up two workbenches in the other half of the 10'x20' tent area.

A sharpening station and sharpening accessories will be available.

A basic set of turning tools, chucks, accessories and supplies for the lathes will be available.

Face shields and safety glasses to promote good safety habits

A portable, light-weight display table will be set up and taken down each day for the display of sample turned objects, and MCW information.

Large, lockable tool boxes will be on site for the storage of most tools, accessories, supplies and loose parts. While all the necessary tools will be provided and stored in the tool boxes, you are encourage to bring your own favorite turning tools and accessories that you can easily carry.

Several sitting chairs will also be available for your comfort.

What volunteers will likely want to bring:

Bring your own set of basic turning tools (rouging gouge, spindle gouge, detail gouge, bowl gouge, scraper, parting chisel, and skew chisel should be sufficient) and a calipers to demonstrate sizing techniques.

Diamond stone or slip stone to touch up your tools might be helpful. Since most of the wood will be green, there should be limited need to even touch up your tools.

There will be rolls of sandpaper (150, 240, 320 grit) available for your use. Use the shavings to burnish the work.

There will be some limited amounts of finishing supplies such as some BLO and wax for very basic finishing and pen-turner's finish.

Bring a bottle of water or plan to purchase refreshing lemonade at one of the nearby stands. There is also a free tea and lemonade stand for volunteers with badges

Montgomery County Woodturners Turning Demonstrations at the Montgomery County Agricultural Fair – Aug 8th-16th, 2014

Demonstration Time Slots and Duration

While the fair is open from 10:00 AM to mid-night, the mid-day and early evening time period up to about 8:00pm is the prime traffic time. Demonstration periods have been set up for 10AM-3:00PM and 3:00PM-8:00PM.

Given many members' work schedules and other commitments, time slots are very flexible, it's OK to arrive a little later and closer earlier, if no traffic is occurring. If you have a lot of traffic at closing, it's your discretion how long you continue demonstrating.

Demonstrators are asked to take set up or take down the display table, sample turned objects, and MCW brochures. The large, Stanley storage chests are used to store the items. **A key for the Stanley Lockable Storage Boxes will be hidden with the location provided to all the volunteers for accessing and storing items.**

Other points of interest:

Passes – Free day passes will be provided at the August monthly MCW Meeting since we are volunteer demonstrators. Some passes may allow parking, but it tends to be at the opposite end of where we are demonstrating. The best approach is to park at the designated Lake Forest Mall area and take the shuttle to the Chestnut Street Entrance. The Shuttle Bus will be dropping you off roughly a block away from where we are demonstrating. Plan what tools and items you plan to bring so you can carry them on the shuttle bus.

Parking – There is some parking on site depending on the traffic and your specific pass restrictions as well as free parking and shuttle service from Lake Forest Mall.

Liability – The Old Timers Group who hosts us has liability coverage. In addition, since this will be an MCW sponsored event, members with AAW membership will also be covered by AAW liability insurance.

MCW Meeting Minutes – July 10, 2014 (Jack Enders)

Minutes: Montgomery County Woodturners Meeting

Opening Remarks:

President Tim Aley called the meeting to order at 7:00pm, welcoming members and guests. Approximately 35 were in attendance. He noted that he is trying to 'streamline' the 'business' segment of the meeting in order to allocate more time for demonstrations and discussion of show and tell objects. His email to members provides information not covered in detail during this meeting.

New Members & Guests:

Two guests were in attendance for this meeting. John van Dyke, guest of Elliot Schantz, and Kim, guest of Clif Poodry.

Tim again reminded everyone to wear their name tags. Laser-engraved wooden name tags are available also for \$9.00. Fill out a form at the meeting or check out the process at <http://montgomerycountywoodturners.org/NameBadge.html>

General Announcements and Updates:

Surplus Lathe Raffle:

Emails to MCW members prior to this meeting described the decision to winnow out excess lathes and established a raffle process for disposal of the lathes to members at substantially reduced prices. The raffle took place at this meeting and the following members won the lucky drawings:

Emily Koo and Beth McClellan: Delta Midi-Lathe (46-460) with stand (MCW)
Drew Phillips: General Midi-Lathe (Model #25-114QC) with stand (MCW)
Carl Powell: Fisch Midi-Lathe (TC90-100), Ext, Jet Stand, PSI VS motor (MCW)
Jeff Tate: Rikon Midi-Lathe, Jet Stand (WC)
Paul Wodiska: Jet Midi-Lathe (JWL-1220VS), Jet Stand (WC)
Bill Long: Nova DVR #2 with Leg Set (WC)
[Still for Sale]: Nova DVR#2 with Leg Set (WC)

Ellsworth Bowl Raffle:

The bowl turned by David Ellsworth in his demo at MCW was raffled off, and the lucky winner was Richard Webster.

Sanding Supplier:

MCW member Bob Stroman updated members on the availability of a wide range of sanding supplies and equipment through his company, 2Sand.com. The company is located on Dakota Drive in Gaithersburg. Website is www.2sand.com

MCW Meeting Minutes – July 10, 2014 (Jack Enders)

Downed Tree (found wood):

Tim was notified of a Silver Oak storm-felled tree in the District. Anyone interested, see Tim.

Auction:

Tim auctioned off the remaining two pieces of David Jacobowitz' hardwood donation: African Rosewood and Snakewood boards. Paul Simon bought the Rosewood; Jeff Tate (????) bought the Snakewood.

Meeting Layout Progress:

Under Bert Bleckwenn's leadership, MCW volunteers working with Woodworkers Club, have continuously improved the ever-evolving video setup and meeting layout. An aim of this improvement is the capability to videotape to DVD selected demonstrations to put into the MCW video library, available for members to access.

The members' thanks to Bert for undertaking this and to Matt Radtke for stepping up to the task of videographing the meeting and demos were voiced in enthusiastic applause.

Studio Tour:

Tim called attention to brochures supplied by Bill Long that describe a Studio Tour in Delaware in late November that features, among others, the studio of woodturner Tom Frey.

Newsletter:

Members were again reminded that the need for more Newsletter articles continues. Sharing experience by submitting stories to the Newsletter benefits everyone and makes our group wiser. Members should submit their stories about their turning experiences or other newsletter content to Editor Mark Verna by July 26th. (mark.verna2@verizon.net).

Bring Back Challenge:

No Bring Back Challenge for this meeting; it will be resumed at the August meeting, with Mike Twenty bringing an item for the drawing.

Thanks and Appreciations:

To: Bob Grudberg, who collected demo fees for the evening's program; Paul Simon and his cleanup crew; Jeff Tate and Rebecca Meyerson for photo gallery support; Matt Radtke for videographing the meeting; Clif Poodry for managing and schlepping the video library to the meetings; Bert Bleckwenn for his masterful revision of the video setup and many other contributions to the MCW; Ed Karch and others who donated various woods to the Silent Auction; Clif Poodry for bringing a propane torch for demonstrator Derek Weidman to use during his program; Bill Long for running the Show and Tell (and returning to active turning after a

MCW Meeting Minutes – July 10, 2014 (Jack Enders)

prolonged absence due to illness); Phil Brown for managing and coordinating the Library Exhibits; the many unnamed member/volunteers for helping to set up and dismantle the chairs for the meeting.

Scheduled MCW and Other Events of Interest to Members:

Montgomery County Fair: Tim asked for help in managing this first year of his taking on MCW's participation in our annual project. The fair takes place at the Montgomery County Fairgrounds in Gaithersburg from August 8th through the 16th. MCW, teaming with Woodworkers Club and Montgomery County Carvers (MCC) will set up shop at the usual place in the Old Timers area of the exhibit space. VOLUNTEERS ARE NEEDED to help with setup and shutdown, and to staff the demonstration roster. Demos will take place roughly in two shifts: 10am-3pm, and 3pm-7pm. Especially needed are helpers for setup on Friday August 8 from 10-3, and take-down on August 16 from 10-3. Please contact Tim Aley (taley16922@aol.com) if you can help.

Skills Enhancement and Lathe Maintenance Session(s): The next Skills Enhancement Session will take place on Friday, July 11, from 10am to 12:30 pm. The former Lathe Maintenance activities have been combined with the Skills Enhancement Sessions. These monthly sessions provide opportunities for members to experiment and practice new techniques, try new tools, and share acquired knowledge.

NOTE: There will be no Sessions in August, due to the Montgomery County Fair schedule.

The next following session is scheduled for Friday September 12th. Contact Bert Bleckwenn if you are interested (bableck@gmail.com). The format of the session begins with the first 30 minutes or so dedicated to lathe maintenance, followed by the participant's choice of activity, under the mentorship of Bert.

[Skills Enhancement sessions are "open" turning opportunities to perfect one's skills and techniques with mentoring and members who have participated enthusiastically endorse the usefulness of these sessions. Use of WWC lathes and supplies and tools by MCW are provided. They are held on one Friday or Sunday in alternate months. The full schedule for the year is given on the MCW website and in the monthly Newsletter.]

NOTE: Participants must be active AAW members in order to participate and be covered by the AAW Liability Insurance Policy.

Upcoming Programs: Tim announced the following changes and featured programs for upcoming meetings:

August 7, 2014 Meeting: Allen Alexopoulos (www.lathescapes.com)

September 11, 2014 Meeting: Molly Winton in conjunction with WC Course

November 6, 2014 Meeting: Jimmy Clewes

December 11, 2014 Meeting: Margaret Lospinuso (MCW Potluck Evening!)

MCW members were encouraged to sign up for the WC courses offered by these and

MCW Meeting Minutes – July 10, 2014 (Jack Enders)

other renowned woodturning and woodworking experts. Flyers containing course details will be sent out to members when they are received as well as being posted in the WC retail area.

Library Display Project: The schedule for upcoming displays is as follows, and volunteers to help Phil Brown with setup are always appreciated:

Kensington Park and Twinbrook Libraries in July (smaller exhibits)
Quince Orchard Library in October 2014
Germantown Library in November 2014
Potomac Library in January 2015
Bethesda Library in February 2015
Quince Orchard Library in September 2015

(MCW participates in the Montgomery County Library Display Program, with several displays of members' work on month-long displays at several County libraries. It is a good opportunity for both our club and our members to connect with the greater community about our activities and talents. Phil (philbrown@comcast.net) is the coordinator. We are trying to accumulate a pool of loaned turned objects from which to draw the individual displays, to avoid the often "last-minute" rush and panic of previous months in finding enough objects for the display. Members having turned objects for loan to this program are urged to contact Phil).

MCW Wounded Warrior Project: Members were reminded that the bi-weekly Pen Turning sessions with WRAMC's Wounded Warriors continue with great participation and enthusiasm, drawing about 5-7 soldiers at each session. MCW volunteers (including Project Coordinator and Leader Don van Ryk) provide mentoring and one-on-one advice and supervision. The biweekly sessions require a steady participation of MCW mentors, and for the most part, the soldiers are matched reasonably well with mentors. However, on occasion Don has come up a bit short of enough volunteers to adequately help the students, and urged the members to join in supporting this great service project. The session on July 9 drew 8 soldiers with 4 MCW members as mentors.

Don asked for donations of pen blanks. Members should contact him directly.

The sessions take place on alternate Wednesdays from 12:30pm-2:30pm at the Woodworkers Club with the next sessions being held on April 30th and May 14th and alternate following Wednesdays. Contact Don van Ryk (dvanyrk@aol.com) to participate.

MCW members mentoring this program are uniformly positive about its effectiveness. Helping to assist in the rehabilitation of our wounded soldiers in developing interest and skills in woodturning, using pen turning as the focus, has been very satisfying to the soldiers themselves. Some of the soldiers have never before done any woodworking or woodturning. It is a wonderful effort that benefits both student and mentor. Tim suggested that anyone curious about the program should drop by during one of these Wednesday sessions and see for themselves what it is all about.

MCW Meeting Minutes – July 10, 2014 (Jack Enders)

Thanks were expressed to those MCW member volunteers who have been able to show up to mentor these good people, and to the Woodworkers Club which very graciously sponsors this worthwhile program with lathes and space and the great help and participation of Chris Johnstone.

Wood Carving Group: Bert Bleckwenn reported that the new Montgomery Woodcarvers Club is up and operating with monthly open sessions and meetings here at the Woodworkers Club. Contact Bert (bableck@gmail.com) or Matt (matt@woodworkersclub.com) for further details.

Show and Tell

Bill Long emcee'd the Show and Tell.

For this month, eight members brought Show and Tell pieces, as follows:

Tim Aley – Bowl

Matt Radtke – Ambrosia Maple Bowls

Ed Karch – Maple Platter; Circular Box in shape of a Navajo Kiva, Redwood style

Ilya Zavorin – Cake Stand, Laminated Assorted Woods. Showed structural failure and sought comments and advice on its cause.

Bob Grudberg – Hollow Form, Urn, and Lazy Susan, all with segmented woods.

Gary Guenther – Red Oak Bowl with voids filled with CA glue/coffee grounds; Richard Webster – Natural Edge Bowl, Dogwood

Bill Long – Shallow Natural Edge Bowl, Poplar

Jeff Tate photographed the pieces, and Rebecca Meyerson assisted by 'trucking' the pieces from display to photo booth and back.

[Additional detail and photos of this month's show and tell objects listed above and candid shots during the meeting can be found on the MCW website or at:

<https://picasaweb.google.com/106891946865477202075/MCWJuly14Meeting#>

Demo Program

The evening program featured Derek Weidman, an accomplished wood artist who demonstrated how he 'sculpts' interesting amusing and artistic shapes virtually entirely on the lathe.

[Note: A more-detailed description of the program is found elsewhere in the Newsletter and photos can be viewed at: <https://picasaweb.google.com/106891946865477202075/MCWJuly14Program#>

The meeting adjourned at 9:20pm

--Jack Enders, Secretary

News about our Members (Phil Brown)

Member News

A modest Aspen Hill library exhibit is installed for the month of August with pieces by **Tim Aley, Phil Brown, Bob Browning, Bert Bleckwenn, Bob Grudberg, Gary Guenther, Ed Karch, Russ Iler, Paul Mazzi, Jeff Tate, Richard Webster, and Stan Wellborn**. The stand-alone case exhibit at the Twinbrook Library continues up during August for a second month..

Michael Blake passed away on or near July 21st. A memorial service is planned at noon on Sunday, August 10th, at the Hines-Rinaldi funeral home, 11800 New Hampshire Avenue (just north of Rt 29, Columbia Pike) in Silver Spring. An obituary will likely be published at: www.dignitymemorial.com/hines-rinaldi-funeral-home/en-us/index.page

Phil Brown will talk about aspects of design and his turning with Baltimore Area Woodturners on September 10th. baltimoreareaturners.org/

Mike Colella attended the Alain Mailland sea-forms class at Arrowmont, June 22-28. www.arrowmont.org/workshops-and-classes

Emily Koo took Mark Supik's Bowl Turning class in Baltimore last spring.

Clif Poodry teaches *Beginning Bowl Turning* during the evening of Aug. 28-29, Oct 14-15, and Nov 17-18; and *Introduction to the Lathe*, Aug. 25-26, Sept 29-30, and Oct 20-21 at the Woodworkers Club. A minimum of three students are required to conduct a class. To register, call 301-984-9033, or go to classes at: <http://woodworkersclub.com/classes/>

Don't be shy! Promote yourself. Tell us about your woodturning activities in the MCW Newsletter. Send your information by the 25th of the month to Phil Brown, philfbrown@comcast.net, or call 301-767-9863.

Craft Forms 2014

The 20th International Juried Exhibition of Contemporary Craft will be up December 5, 2014 through January 31, 2015 at the Wayne Art Center in Wayne, PA. The entry deadline is September 12th. See www.craftformsentry.org/ for more information and the prospectus.

MCW MEMBER DISPLAY

News about our Members (Phil Brown)



The Aspen Hill Library is displaying work by Tim Aley, Phil Brown, Bob Browning, Bert Bleckwenn, Bob Grudberg, Gary Guenther, Ed Karch, Russ Iler, Paul Mazzi, Jeff Tate, Richard Webster, and Stan Wellborn. Books on woodturning and wood working are on view on two shelves under the left side.

July EVENING PROGRAM – Derek Weidman (Jack Enders)

ARTISTIC WOOD SCULPTURE ON THE LATHE

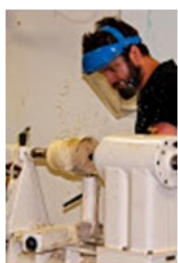
With Derek Weidman



Born in 1982, Derek Weidman has been working as a professional sculptor in the medium of wood since 2004. Currently living in Harleysville, PA, he was educated at Bucks County Community College. From the beginning, he has pursued the challenges of sculpting on the lathe by means of applying challenging innovative multi-axis turning techniques, coupled with an innate sense of form and knowledge of wood that has produced unusually unique and finely-crafted sculptures. He focuses on creative problem solving coupled with rigorous execution to undermine convention and to achieve technical innovations, creating work that is novel to see and experience. His subject matter ranges from animals to deities to pure abstractions, working with an old-world sensibility in a modernist way.



Derek began the evening's program by describing his process. He characterizes himself as a non-traditional turner, taking a general concept and plunging into the creative task of working with the rough turning blank. This is a very dynamic ad hoc process that often results in an outcome different from that envisioned at the outset. He referred to it as "...starting with a horse and ending up with a pig."



He asked the assembled MCW members to choose a subject for the program's demonstration. After some discussion, the consensus was a Jurassic Velociraptor. He then proceeded to sketch a rough outline of the shape, noting surface features and locations of turning axes for the various surfaces of rotation to be produced. The sketch was transferred in rough form to the turning blank and mounted in the lathe between centers along the major axis of the work.



Rough turning of the head's overall shape was followed by rotating the work piece 90°, centering the blank's new axis carefully and then turning the narrower 'sides' of the head. Because the design may demand some extreme off-center/off-balance turning (i.e., "Turning Air"), the lathe used must be capable of continuous variable speed control, down to zero. Starting up an off-center blank slowly requires light cuts to remove wood to the desired shape.



EVENING PROGRAM – Derek Weidman (Jack Enders)



As the figure began to gradually take shape, Derek shared his thinking about the task as he went along, envisioning new axes of rotation and work piece mounting to shape different parts of the head. (Editor's Note: *A detailed description of such multi-axis turning can be found in an article by Barbara Dill in American Woodturner, December 2011*). Watching the successive axis changes in the turning process made the understanding of this method much clearer. Shaping the cheeks, eye sockets, nose, and slightly-open jaw/mouth, was a more or less 'compose-as-you-go' exercise, with trial-and-error mountings and cuts.

Unlike many turners who are concerned about smooth finishes leaving no trace of tool marks, Derek favors a 'rougher' approach, where the final surface texture preserves the tool marks' random rough cuts that may be incorporated, along with the drive and tail-stock center marks as eyes or other features into the object's final appearance. The result of this evening's lathework was a very respectable velociraptor head representation, and the next step was to take it from the lathe and add surface finish treatment.



Placing the turned head on the concrete floor of the shop, Derek used a propane torch to scorch the surface highlights and to burn off the fuzz remnants from the turning. This added a dramatic appearance in contrasts.



This stage of finishing precedes any painting that might be done. For some of his work, Derek prefers to leave the object unpainted, but when colors are used to decorate, he prefers Topic© color markers. They are expensive, but good...alcohol base and UV resistant. Different tips are available for different degrees of detail work. He generally applies pen-tacryl as a stabilizer after turning and between color applications.

As for preferred woods, Derek likes to work with holly, maple, acacia, and cherry...all tight-grained woods.

The result of the evening's effort was a very nicely-created-on-the-spot velociraptor head!

After a brief Q&A session, the meeting adjourned with the members present showing their appreciation to Derek with a rousing round of applause. – *Jack Enders, Secretary*



Future Meetings (Mike Colella)

Please call Mike Colella at 301-942-2853 with your ideas

2014-2015 Meeting Schedule		
January 9, 2014 Mark Supik	February 6 2014 William Peirce	March 13 2014 Chuck Engstrom
April 17 2014 * David Ellsworth	May 8 2014 TBD	June 12 2014 Warren Carpenter
July 10 2014 Derek Weidman	August 7 2014 Allen Alexopoulos	September 11 2014 Molly Winton
October 8 2014 TBD	November 6 2014 Jimmy Clewes	December 11 2014 Margaret Lospinuso with Potluck
January 8, 2015 Panel Critique	February 12, 2015 TBD	March 11, 2015 ** Mike Sorge

* one week later than normal

** Wednesday

2014 Skills Enhancement and Maintenance Schedule

Skills Enhancement & Maintenance Sessions	Day (Alternating Fridays and Sundays)
January 10th	Friday
Feb 16th	Sunday
March 21st	Friday
April 6th	Sunday
May 16th	Friday
June 8th	Sunday
July 11th	Friday
No Session - Fair	n/a
Sept 12th	Friday
Oct 19th	Sunday
Nov 21th	Friday
Dec 14th	Sunday

Membership Application Form and Interest Profile

MCW Membership Application forms available at: <http://montgomerycountywoodturners.org/>

To become a member or renew, please print out, complete and either mail it or personally deliver it to Bill Autry along with a check for \$20.00, payable to Montgomery County Woodturners. New membership in the 2nd quarter is \$15, 3rd quarter \$10, and 4th quarter \$5. A Family membership is \$30.00/yr. Please ensure you include your email address, as all communications are electronic via our website and periodic email notifications.

Member Discount Program

EXOTIC LUMBER, INC. FREDERICK, MARYLAND – www.exoticlumberinc.com

With over 130 species in stock, Exotic Lumber has one of the widest selections available on the East Coast. We offer a 10% discount to MCW members. We have warehouse locations in Gaithersburg and Annapolis, where you are welcome to select from our extensive selection of turning blocks.



HARDWOODS, INC. FREDERICK, MARYLAND – hardwoodsincorporated.com

10% off on all turning stock, lumber, moldings, finishes and hardware. 10% off on all Amana router bits and blades that list for \$75.00 and under and 20% off those that list for over \$75.00. 5% off all plywood and veneer products.



2SAND.COM – 2sand.com or call 800/516-7621

2Sand.com is a coated abrasive specialist focused on fast service and fair prices providing superior sanding discs, sandpaper sheets, and woodturning tools to woodshops. MCW Member Discount is 10% (discount code available in the restricted area of the MCW Website).



ROCKVILLE WOODWORKERS CLUB – woodworkersclub.com

MCW and other club members, remember to support the Woodworkers Club by purchasing turning supplies during our meetings and save 10% on the retail price.



CRAFT SUPPLIES USA – woodturnerscatalog.com

Club members can save 10% on all finishes & disc abrasives from Craft Supplies USA.

Just mention your club name and save, all year long. You can always see current club specials by clicking on the members login button on their homepage. New 15% specials are updated on the 1st of the month, which can be accessed on the link above and going to the club member login located at the lower right portion of the page.



HARTVILLE TOOL CLUB – hartvilletool.com

Members get a 15% discount, with MCW receiving a 3% rebate. If you have not signed up for this program, let Stan Wellborn know you want to do so. He will let Hartville know you are an MCW member and sign you up. Catalogs and ordering instructions are available at meetings.





Montgomery County Woodturners - A local chapter of the American Association of Woodturners (AAW)

MCW Contact Information

OFFICERS

President	Tim Aley
President Emeritus	Bert Bleckwenn
Vice President	Gary Guenther
Treasurer	Phil Brown
Program Chair	Michael Colella
Membership	Elliot Schantz
Secretary	Jack Enders
Webmaster	Carl Powell
Newsletter Editor	Mark Verna

VOLUNTEERS

Web Albums	Tim Aley, Michael Colella, Gary Guenther
Show & Tell Recording	Richard Webster
Mentor Program	Donald Couchman
Gallery Photography	Michael Colella, Jeff Tate, Hal Burdette
Photography Assistant	
Lending Library	Clif Poodry
Audio /Video	Matt Radtke, Bert Bleckwenn
Challenge Coordinator	Elliot Schantz
Wood Identification	Ed Karch
Candid Photography	Tim Aley, Gary Guenther
Exhibit Committee	Phil Brown, Hal Burdette, Russ Iler
Skills Enhancement Coordinator	Bert Bleckwenn
Warrior Support Program	Don Van Ryk
Clean-Up Committee	Paul Simon