



MCW Newsletter



Vol. 2016, Issue 7

Montgomery County Woodturners

<http://montgomerycountywoodturners.org>

Page 1

July 2016

Next Meeting	1
Agenda	1
Evening Program	2
Editor's Corner	3
President's Perspective	6
General Announcements	7
Member News	9
Skills Enhancement Schedule	9
Meeting Minutes	10
Bring Back Challenge	14
Last Month's Program	15
Wounded Warrior Program Schedule	17
Show, Tell & Ask	18
Back to Basics	19
Second AAW Symposium in Five Years	21
Beads of Courage Review	24
Montgomery County Agricultural Fair	26
Creative Crafts Council	32
Click It	33
Video View	34
Your Mileage May Vary	35
Your Mileage May Vary Sidebar	36
MCW Resources	37
Treasury Report	38
Member Discounts	39
Future Meetings Schedule	40
Chapter Contacts - Volunteers	41
Chapter Contacts - Officers	42
TAILSTOCK	42

Next Meeting

Item	Text
Date:	THURSDAY, July 7, 2016
Time:	7:00 - 9:30 PM
Location:	Woodworkers Club 11910-L Parklawn Drive Rockville, MD 20852 (301) 984-9033

Note: Please park in the rear of the building (or the last half of the side) because all the spaces in the front are reserved for short term.

Agenda

Time	Activity
6:30 - 6:45 PM	Set up for Program
6:45 - 7:00 PM	<ul style="list-style-type: none">• Check in your piece for ST&A• Wear your name tag• Meet and greet other Members• Bid on Silent Auction items• Sign out and pay John Laffan for videos from our Lending Library
7:00 - 7:25 PM	Business Meeting
7:25 - 7:45 PM	Show, Tell & Ask
7:45 - 9:15 PM	Program: Carl Powell - Sharpening and Tool Use
9:15 - 9:30 PM	Pay for and retrieve your Silent Auction items, pack up, put the lathe and space back in order.
9:30 - 10:00 PM	Select and pay for classes, workshops, tools, wood, books and other items at the Woodworkers Club store.

Evening Program (Tim Aley)

Carl Powell -- Sharpening and the Cutting Edge *plus* our annual Ice Cream Social



Longtime MCW member and Webmaster Carl Powell makes his demonstration debut for us, showing a variety of methods to sharpen your tools and explaining how they cut the wood. But please come early for conversations with other members at our second-annual Ice Cream Social! I scream!

From Wikipedia, “**Sharpening** is the process of creating or refining a sharp edge of appropriate shape on a tool or implement designed for cutting.” This definition leaves a number of questions unanswered: what is a sharp edge; how do you create it or refine it; and what is an appropriate shape for a tool? The answers to these questions will not only make you better at sharpening but will help you better choose and use tools.

Wet grinders, dry grinders, and belt sanders are all in common use for sharpening. The demonstration will show the operation of each and compare their use for sharpening woodturning tools. Several different types of grinding jigs, both commercial and homemade, will also be shown. All of these will be available for the Skills Enhancement session on July 10th for anyone who wants to try them out.

If that's not enough, July is also the month for our annual Ice Cream Social! Come early to share in a sweet treat and socialize.

There is no demo fee.



Editor's Corner (Bill Long)

In last month's Newsletter we noted, in a festive way, that our MCW Newsletter has been recognized by AAW as the best one among all local chapters. And, in a couple places below, we provide references to the recognition: "HALL OF FAME – Best Chapter Newsletter – 2016 – Montgomery County Woodturners, Bill Long, Editor". I stood with Gary at the banquet to watch as our award was recognized by AAW leadership.

I am happy to take some of the credit, of course. But there is much credit to share. Many of you have directly contributed text and photos for the last 18 months of my tenure in the position of Editor. All of our presidents – Ellen Davis, Gary Guenther, Tim Aley, myself, etc., have supported NL Editors through the years, with the cumulative effect that Editors were assured of help when it was needed.



And, of course, help is always needed, and the most important part of that 'always' is right now. Here are some ways to help:

1. If you go to a woodturners symposium, write a short article about what you did, what you saw, what you bought or didn't. I did that for my trip to the AAW Symposium in Atlanta for this NL, but I was one of six or seven members there.
2. If you have bought a new tool or found a new way to use an old one, tell us. The same holds true for new wood, new finishes, etc.
3. If you tried mightily, or even half-heartedly, to make a new piece, and it blew up, tell us what you did and didn't do that you think caused the problem.
4. If you participate in a demonstration, such as at the MoCo Agricultural Fair in August, tell the rest of us how it went – high spots and low spots.
5. Do a better job than I did at the AAW Symposium in Atlanta of taking photos. They can be taken with a high-quality, dedicated camera, but many times a cell phone photo is fine.
6. When you write an article, whether long or short, that would be enhanced with photos, put them in where they fit. You don't have to get the layout perfect – that is why you have an Editor.
7. Use the 'Manual of Style' I wrote some time ago – it really helps me if you use it! I have included it again, just below.

Last but not least (lastly but not leastly?) there is one of you I have to recognize more explicitly – Gary Guenther. He has been a prolific contributor of articles. More importantly, he is a great proofreader and Editor's right-hand-man. Kudos, Gary!

(Continued from page 3)

'Manual of Style' for MCW Newsletter Contributions

The Editor's job will be easier if each contributor adheres to the following procedures. They are designed to facilitate the porting of text, pictures and tables from MS Word or MS Excel to MS Publisher.

This document incorporates all of the formatting needs shown in the table. (Relevant to the MS Word version of the document.)

A convenient way to compose your article is to load this document, save it with the name of your choosing, then enter CTRL-A to select all text and the table, then enter Del, then input your text and other parts of the article.

Questions, comments, suggestions, additions, etc., are more than welcome. As are more articles, especially Special Member Reports, by each one of you!

Topic	Item	Value	Notes
File			
	MS Word	.docx	Can handle .doc . Do not use .rtf .
	Generic Sections (e.g., Member	1	
	Spell Check?	Yes	
Font			
	Name	Arial	Use of a different font is allowed
	Size	12	Different size OK for special ef-
	Bold, italics, underlining	Emphasis	Don't make the whole article in
Margins			
	Top Margin - First Page	1.8"	
	Bottom Margin	0.8"	
	Left Margin	0.8"	
	Right Margin	0.8"	
	Top Margin - Continuation Pages	1.4"	

(Continued on page 5)

(Continued from page 4)

Topic	Item	Value	Notes
Paragraphs			
	Height of Line	1	
	Tab used to start new paragraph?	No	
	Enter' key after a paragraph?	Yes	
	Automatic line before next paragraph?	No	
	Automatic line after last paragraph?	No	
Sentences			
	Spaces after the end of a sentence	1	
Photos			
	Longest side	3"	Flexible on this, depending on presentation needs
	Resolution	High	Start with resolution of photos in the gallery on our Web site (if downloading, be careful - don't just hit Ctrl-C, but actually download)
	Placement	Near Text	
	Alignment within text	Square	
	Alignment for wide pictures	Top & Bottom	
	Captions	As Needed	Not needed if the picture is near the text related to it
Tables			
	Outlining	As Appropriate	
	If stand-alone	Excel .xlsx	Can handle .xls . Do not use .csv or other text formats
Contents			
	Member & guest names - full name?	Yes	
	Initial caps for Major Items (e.g., Newsletter, Member, Section, etc.)	Yes	A little Germanic, I know
	Web and email and other Links	Active	Check that the link works before sending the file in

President's Perspective (Ellen Davis)

This President's Perspective comes to you directly from Gary Guenther's July 2015 edition. Yes I stole it; I admit it. Why re-write what is already well written. Thank you Gary!

It's Fair Time! Fair? What Fair? Well, the Montgomery County Agricultural Fair, of course. You know, the one held annually since 1945 at the Montgomery County Fairgrounds in Gaithersburg. This year's dates are August 12-20, but planning and preparations for MCW activities have to start now. Tim Aley will be Leading our efforts again this year. Thanks Tim! Check it all out here: <http://mcagfair.com>

This will be that great time of the year when you eat ice cream while watching cow judging, hear the twang of blacksmith hammers, admire old tractors, feel the rumble of monster trucks, walk the long barns of farm animals, check out the arts and crafts and cooking, and turn on a pole lathe. We'll be in the Old Timers' area. Here's just a small sample of our activities last year: <https://picasaweb.google.com/106891946865477202075/MCWAug15MoCoAgFair>



The MoCo Ag Fair is MCW's single biggest Community Outreach activity. We have lots of equipment and practice from years of participation, so if you haven't tried it yet, don't be nervous; and if you have, please come back and do it again. It's guaranteed to be a great experience. In our early years, Bert Bleckwenn got us off to a terrific start and created many of the Traditions that Tim Aley is now guiding us in carrying on and adding to. Quite simply, that there is no Program and No Fun without YOU. We will need lots of turning demonstrated during those days by a coterie of MCW Members working together two or three at a time. Tim needs lots of Volunteers to get out there on weekdays and on weekends to turn and teach and play and have fun while showing the Public how much fun our hobby of woodturning really is. We are looking forward to another year of sharing our love and skills of woodturning.

Please consider finding some time to volunteer. MCW is founded to promote woodturning through education to our Members and to the Public. This is an excellent way to show and talk woodturning to many people. Children find it fascinating; seniors remember woodshop and the pole lathe; and everyone else is curious and entertained. Hopefully we can attract and recruit a few of them to become new MCW Members as well.

Ellen

Advice from a Tree by Ilan Shamir

*Stand tall and proud, Sink your roots into the earth, Be content with your natural beauty,
Go out on a limb, Drink plenty of water, Remember your roots, Enjoy the view!*

General Announcements (Gary Guenther)

Welcome New Members: Last month we added Tim Jackson. Please greet him and make him feel welcomed.

Montgomery County Agricultural Fair: As in past years, MCW will have a large presence at the 2016 MoCo Ag Fair in Gaithersburg from **August 12-20**. We need a LOT of participation to make this work. Please contact Tim Aley to volunteer your time and talent. For details please see President's Perspective and Tim's extended article in this Newsletter edition.

Skills Enhancement Program: The July session is scheduled for **Sunday, July 10** from 10:00am – 1:30pm. Reservations are required. If you would like to attend, please email Matt Radtke at mattradtke@gmail.com to reserve a space. Matt and Eliot Feldman will assist you.

Wounded Warriors Program: MCW Program Director, Don Van Ryk, has arranged a new partnership with Walter Reed for our joint Outreach program of pen turning instruction in conjunction with the Woodworkers Club. Sessions are now on Fridays at 12:30 p.m. Please plan on helping out for this important cause. Don will send emails to announce sessions. The next session is scheduled for **Friday, July 15** at 12:30 p.m.

Public Library Exhibits: The traveling MCW Public Library shows are drawn from a group of pieces loaned by you all to Phil Brown for the entire year. Phil has a fine selection for 2016, and he thanks the participants for their support. **July's** exhibit is at the Twinbrook Public Library. <https://picasaweb.google.com/106891946865477202075/6303514595409497473>

Turning Works: This MCW Program, directed by Jack Enders, has been restructured for 2016 (from our previous "Empty Bowls" project) to support the Interfaith Works organization in Montgomery County. It is a way you can help give back to the less advantaged in our community. Please plan to donate a bowl or other turned object for them to use in their fund-raising activities. We have several people signed up to donate, but we would like to have lots more. We're aiming for a final collection in **September**, at which time we'll donate them to IFW. Please be generous.

Mid-Atlantic Woodturning Symposium: Registration is open for the Mid-Atlantic Woodturning Symposium to be held in Lancaster, PA on Saturday and Sunday, **Sept. 24-25**, 2016. They will have eight nationally-renowned demonstrators, 32 demonstrations, an Instant Gallery, an Award Banquet and Silent Auction, and a Trade Show of woodturning suppliers. See www.mawts.com for more information.

MCW Gallery Exhibit at Washington Artworks: Our 2016 Exhibit in the Gallery at Washington Artworks is scheduled at the very advantageous time of their Fall Festival of the Arts in **November**. Our pieces will be in the gallery for a month, right before the holidays, beginning with the First Friday and for the heavy-traffic weekend Festival. This will be ideal for sales. Please be thinking about preparing a piece or two to enter and possibly sell.

(Continued on page 8)

(Continued from page 7)

The Opening Reception will be on Friday, Nov. 4, and the Festival will be on the weekend of November 5, 6. We will once again be providing live demos in "our" gallery on the evening of the 4th and for the two following afternoons. Please mark it on your calendars now and plan to participate. We had a great time demonstrating at WAW in April and look forward to doing it again.

Web Album Links from the June Meeting: The June Meeting, Show Tell & Ask, and Program are well documented in photos of all the activities. Please see them here:

MCW June '16 Gallery:

<https://picasaweb.google.com/106891946865477202075/6301224521072524929>

MCW June '16 Meeting:

<https://picasaweb.google.com/106891946865477202075/6297931902723316769>

MCW June '16 Program:

<https://picasaweb.google.com/106891946865477202075/6299361774582851057>

MCW 2016 BoC to Hopkins:

<https://picasaweb.google.com/106891946865477202075/6301893480409605777>

Twinbrook Public Library exhibit:

<https://picasaweb.google.com/106891946865477202075/6303514595409497473>

You can always see any and all of our current web albums by simply going to our base web album address at <https://picasaweb.google.com/106891946865477202075/> and scrolling down the page through the thumbnails. Take a look at what we've been doing.



logo
Dec 31, 2022
photos: 1



MCW July '16
Twinbrook Public
Library
Jul 5, 2016
photos: 3



MCW June '16 Meeting
Jun 16, 2016
photos: 35



MCW June '16
Program
Jun 16, 2016
photos: 20



MCW June '16 Gallery
Jun 16, 2016
photos: 25



MCW 2016 BoC to
Hopkins
Jun 3, 2016
photos: 5



MCW BoC 2016
May 12, 2016
photos: 34



MCW May '16 Meeting
May 12, 2016
photos: 43



MCW May '16 Gallery
May 12, 2016
photos: 50



MCW May '16 Program
May 12, 2016
photos: 16



MCW Apr. '16 Meeting
Apr 13, 2016
photos: 58



MCW Apr. '16 Gallery
Apr 13, 2016
photos: 43



MCW Apr. '16 Program
Apr 13, 2016
photos: 44



MCW April '16 demos
at Washington
ArtWorks Festival
Apr 1, 2016



MCW April '16 Davis
Public Library
Apr 1, 2016



MCW Mar. '16 Meeting
Mar 17, 2016
photos: 33



MCW Mar. '16 Program
Mar 17, 2016
photos: 73



MCW Mar. '16 Gallery
Mar 17, 2016
photos: 31

Member News (Phil Brown)

Phil Brown will host the Windgate International Turning Exchange (ITE) international residents from Philadelphia, July 17-19, for their visits to museums and three turned-wood and furniture collections in this area. See their blog posts at <https://internationalturningexchange.wordpress.com/>



Mike Colella is working on many more new and exciting Magic Wands for the Maryland Renaissance Faire. His permanent booth will be on Queens Path, about 100 yards from the main entrance the right side. He will be there every weekend starting August 29th and through October 25th!

Clif Poodry teaches Introduction to the Lathe on July 11-12, Aug 8-9, Sept 12-13, Oct 3-4, Nov 14-15, and Dec 5-6 at the Woodworkers Club, and **Matt Radtke** teaches Beginning Bowl Turning during the evenings of July 25-26, Aug 22-23, Sept 26-27, Oct 24-25, and Nov 28-29. A minimum of three students are required to conduct a class. To register, call 301-984-9033, or go to: <http://woodworkersclub.com/classes/>

Don't be shy! Promote yourself. Tell us about your woodturning activities in the MCW Newsletter. Send your information by the 23rd of the month to Phil Brown, philfbrown@comcast.net

Skills Enhancement Schedule (Matt Radtke)

Session Date	WeekDay		Session Date	WeekDay
7/10/2016	Sunday		10/7/2016	Friday
8/12/2016	Friday		11/13/2016	Sunday
9/11/2016	Sunday		12/9/2016	Friday

Meeting Minutes (Gary Guenther)

MCW Meeting of June 16, 2016

President Ellen Davis called the meeting to order at 7:05pm. Approximately 42 were in attendance. Thanks to Mike Colella for taking photos of the Show Tell & Ask items.

Announcements

Name Tags: Members were reminded to wear their name tags to help getting acquainted with one another. Make a point of talking to someone you don't know! Order forms for permanent, wooden name tags are available in the box on the sign-in table.

Silent Auction: Ellen asked members to bring items for the Silent Auction, but cautioned that "If it doesn't sell, you take it home with you!"

Guests and New Members: Ellen welcomed guests Tim Jackson, Sean Tracy, and Brian Costner. Tim joined MCW; welcome Tim.

Bring-back Challenge: Bill Long won the Bring-back Challenge drawing, receiving a pair of multi-axis cherry candlesticks from last-month's winner, Jeff Tate.

Membership: Ellen urged those who have not yet joined MCW and/or AAW to join and enjoy the many benefits of membership. The AAW's many online offerings augment their print journal with a variety of valuable products.

Volunteering: The success of MCW depends on Member Volunteers. Ellen stressed the importance of pitching in to help with the multitude of tasks and programs that makes MCW such a richly-endowed organization. She emphasized that help is needed now in several areas and passed around a sign-up sheet. For example, tonight our Secretary Steve Drake is absent due to travel, and we need a Backup Secretary. Bob Anderson will be writing up tonight's demonstration. Please join in.

July Meeting: Ellen will be absent for the July 7 meeting; VP Bob Anderson will conduct the business meeting in Ellen's absence.

New Business

Best Newsletter: Our MCW Newsletter won FIRST PLACE in the AAW 2016 Best Newsletter contest! Thanks to Editor Bill Long for his hard work and dedication, and to all of our contributors. Unfortunately, Bill didn't get to go up on the stage to receive it at the Symposium Awards Banquet (as we did in years past) due to "streamlining" of the event, but our win was announced verbally and on the screen.

AAW Turners Without Borders: This is an AAW initiative to broaden links with the wider woodturning world. It has partnered with GreenWood (www.greenwoodglobal.org), a U.S.-based non-profit organization whose conservation mission includes training artisans and creating incentives that protect biodiversity. Our own Manu Suarez was selected to represent AAW in Honduras for teaching woodturning to artisans in remote areas of that country. Manu spoke about his stint there, where he taught woodturning. He mentored a talented woodworker who learned the lathe quickly. Bravo, Manu, for making a difference! We will look forward to a Newsletter article in the future.

(Continued on page 11)

(Continued from page 10)

AAW Symposium: The Atlanta Symposium (June 9-12) was a huge success. Ellen spoke about the *Women in Turning* activities. Their *Fruits of Our Labor* piece, in which Ellen participated, auctioned for a dazzling \$12,000. The proceeds are split by WIT and the AAW Educational Opportunity Grant Program.



Tim Aley spoke about the many great presentations that he saw at the Symposium and the amazing Instant Gallery with over a thousand pieces. He also attended a Membership meeting and said that AAW is looking at many ways to provide additional value to members beyond the journal. For instance, they are providing a lot of new online content and have redone the website gallery. Much more is to come. Next year's Symposium is in Kansas City.

Outreach Program News

Beads of Courage: BoC Program Director Jeff Tate described how, on June 3, he and Gary Guenther delivered 14 BoC boxes and over 35 Courage Wands to Stephanie Davis, Senior Associate Director of Development, at the Johns Hopkins Children's Center Pediatric Oncology unit, which services over 200 patients per year. Director Davis was very appreciative and gave us a tour of their impressive facility. As part of this touching and satisfying experience for us, she presented some of the boxes to their happy new owners and parents. Jeff points out that this is an ongoing Program and that Members are encouraged to provide more boxes to him at any time.

Wounded Warrior Pen Turning: Don Van Ryk is Director of this MCW/Woodworkers Club Program that brings our service personnel up from Walter Reed for pen turning. The next session will take place on Friday, July 15 from 12:30pm until 2:30pm. Don is looking for additional Members to help in coaching our soldiers. Don will send emails to announce sessions. Contact him at dvanryk@niaid.nih.gov with any questions you may have. Mike Sorge says that in his travels he has seen that woodturning really helps our troops who have come home with medical problems.

MCW Public Library Displays: Phil Brown announced that the next display will take place in July at the Twinbook Public Library.

(Continued on page 12)

(Continued from page 11)

MCW Gallery Exhibit at Washington Artworks: Our 2016 Exhibit in the Gallery at Washington Artworks, scheduled for the prime month of November, right before the holidays, will be ideal for sales. Please be thinking about preparing a piece or two to enter. The Opening Reception will be on Friday, Nov. 4, and the heavy-traffic Fall Festival of Arts will be on the weekend of November 5, 6. We will once again be providing live demos in "our" gallery on the evening of the 4th and for the two following afternoons of the Festival. Please mark it on your calendars now and plan to demonstrate. It's a great experience and lots of fun.

Turning Works: Jack Enders is Director of this MCW program that produces turned objects for Interfaith Works, a Montgomery County non-profit organization that supports homeless individuals and families. Interfaith Works will auction these turned objects to raise funds to carry out their programs. The goal is to collect as many turned items as possible by the September meeting, after which they will be transferred to Interfaith Works. Please remember to sign your work carefully. Contact Jack at jendersaero@verizon.net with any questions.

Education

Skills Enhancement Program: Matt Radtke directs this MCW education program that offers open turning sessions at the Woodworkers Club for skills enhancement through exchange of experience and advice. Eliot Feldman assists. The upcoming session will take place on Sunday July 10 from 10:00am to 1:30pm. Please sign up in advance with Matt by email at mat-tradtke@gmail.com. The topic will be sharpening.

Hands-on Mentors: Gary Guenther coordinates this Program that aims to share techniques and skills among Members. If you need mentoring in a particular technique, there is likely someone in MCW who can help you; if you have specific skills to share, there is likely someone in MCW who can benefit from your mentorship. We need more Mentors; please volunteer and help out. Please contact Gary if you would like to be a Mentor or a Student.

MCW Video and Book Library: Our Lending Librarian, John Laffan, wants everyone to know what a great resource Members have in our extensive collection of books and videos. Because the Library is underused, a formal question to ponder was posed to the Membership: If our videos and books were available without a charge, would you be more likely to borrow them? Discussion will be held next month.

Facebook: Ellen reminded members that MCW now has a new, closed Facebook page for our members to use to ask questions, ask for help, display new works you have created, etc. To join this group, go to the link: <https://www.facebook.com/groups/194941367515051/> and then request to be added to the group.

Future Meeting Programs: Program Chair Tim Aley announced that our July meeting will feature our own Carl Powell demonstrating sharpening and how tools cut. It will be our second annual Ice Cream Social! Come with your bib!



(Continued on page 13)

(Continued from page 12)

Outside Activities News

Mid Atlantic Woodturners Symposium: Registration is open for the Mid-Atlantic Woodturning Symposium to be held in Lancaster, PA on Saturday and Sunday, September 24-25, 2016. They will have eight nationally-renowned demonstrators, 32 demonstrations, an Instant Gallery, an Award Banquet and Silent Auction, and a Trade Show of woodturning suppliers. See www.mawts.com for more information.

Segmented Woodturners Symposium: The Segmented Woodturners, an online chapter of AAW, is holding its 5th symposium on October 27-30, 2016, in Quincy, Massachusetts. A full brochure and registration information can be found at www.segmentedwoodturners.org or by contacting Wayne Miller at wayneomil@segmentedwoodturners.org

Virginia Woodturning Symposium: The Virginia Symposium will take place Nov. 5-6, 2016, in Fishersville, VA with a new format. Instead of their traditional “hands on” scheme, this year it features an exciting array of well-known demonstrators in addition to some Skill Enhancement activities. The facility will be 50% larger and encompass the usual variety of vendors, instant gallery, and periodic raffles. For more information go to www.virginiawoodturners.com

Show, Tell, and Ask

Mike Colella emceed the session of members’ sharing of their current masterpieces.
The shirt; the shirt!



Demonstration Program

This evening’s Program, introduced by Program Chair Tim Aley, features Mike Sorge demonstrating how to make his award-winning natural-edge winged vase. Mike returns to MCW after his very successful “Big Air” demonstration last year. Tonight, he will describe selecting and harvesting wood appropriate for a natural-edge vessel and the process of safely mounting it on the lathe. He will demonstrate positioning and balancing the blank for bark orientation on the lathe to obtain the desired design. He will discuss forming the exterior shape and his methods for removing inside material and getting a smooth cut.

There is a \$10 demo fee.



Bring Back Challenge (Gary Guenther)

It's nice to have a turned-wood item in your collection from one of your friends.

Each month, we raffle off a piece by a Member, to be won by another lucky Member, and the winner's responsibility is to turn a piece of his own and bring it to the next Meeting to have it raffled off, in turn. It's a fun, if random, way for us to trade work amongst ourselves.



Photo Credit: Tim Aley

At our June Meeting, Jeff Tate presented a pair of multi-axis, decorated, cherry candlesticks to the intrigued winner, Bill Long.

The thicker of the two was turned on two additional parallel axes; the thinner one is turned on three additional cross axes. Jeff's influence was the recent demo by our "eccentric" friend Barbara Dill. <https://picasaweb.google.com/106891946865477202075/MCWAug15Program>

Next month, Bill will bring back something to raffle off to the next lucky winner. Be sure to get a raffle ticket at the July Meeting and join in the fun.

Last Month's Program (Bob Anderson)

Mike Sorge presented at the June 16 meeting of MCW. His affable and informative demonstration showed club members and guests how to make a winged tall vessel keeping both a natural edge at the top and ornamental bark running down the sides, looking much like wooden sideburns. These vessels are described on his website (<http://www.mikesorge.com/natural-edge.html>): *"Mike's original signature design has a unique style which includes the full pith, extensive and balanced low bark on both sides, and curved wings that flair at the top. This design is rustic yet elegantly displays the beauty and fullness of the life of the tree it came from. Directly from the fallen tree Mike applies the chainsaw and bandsaw, then completely "green-turns" these natural edge bowls in one session."* He brought a number of pieces that he had already completed to pass around to illustrate his demonstration.

Blank and mounting

Mike began with the choice of a tree for his blank. He noted that trees with the best chance of keeping their bark were downed in the winter when the tree is dormant and sap not running, leaving a more stable cambium layer. He typically uses hard maple, but was using sugar maple tonight. He cut the log so that the length of the blank was about two inches longer than the diameter of the log.

Mike then looked at the log and developed his best design, based upon the characteristics of the log. He found his initial center and, using an appropriate-size Forstner bit, he drilled through the bark and down to solid wood. To mount the blank between centers, he used a two-prong spur drive, which he prefers to the four-prong drive, which he pounded in with the spurs perpendicular to the grain so as not to split the piece.

To center the piece, Mike moved the tailstock end with small incremental adjustments, checking after each adjustment by turning the piece by hand and measuring the distance from the tool rest by using his finger. During these manipulations he was also adjusting for design, as different patterns would emerge on the finished piece depending on the placement of the blank on the lathe. When it was centered to his satisfaction, so as to create even wings and a similar bark pattern down both sides of the piece, he was ready to turn.

Tools and Cuts

Mike noted that push cuts are important for maintaining bark on a piece, and for natural edges. He stated that push cuts help to keep the bark on the piece, while pull cuts will separate it. For the initial outside shaping, the push runs from left to right, beginning at the headstock to keep the natural edge on the wings at the top of the bowl. Additionally, he said that turning at faster speeds makes for cleaner cuts. To get to his optimum speed for the piece, he runs the lathe up to the vibration point and then backs off to a speed that's comfortable for him.

(Continued from page 15)

One member asked about putting some tape on the tool rest to warn that the turner was getting close to the wings. Mike said that he doesn't favor tape because it creates an uneven surface which translates into tool movement which creates marks on the piece. If anything, he suggested making a warning mark with a magic marker.

The great majority (90%) of his work is done with a 5/8" bowl gouge, with most of the rest done with a 1/2" bowl gouge. He uses an Irish grind and makes sure that the wings have a slight convex, never concave, shape. This comes in handy for shear scraping the inside of the piece (more later). His grind angle is approximately 60 degrees. He says approximate as he doesn't measure, and when someone measured at a prior demonstration, his gouges were all in the range of 55 to 60 degrees. Additionally, he grinds away the heel of the tip to give more room for cuts. Mike also uses tools with removable handles so that he can adjust the length of the shaft depending on his need for a piece.

Turning was done with the tool handle between his arm and body, which improves control and reduces fatigue so that turning is fun, which he said is important. Additionally, he reminded us to move the whole body for cuts, not just the arms.

He did note that the best tool to use is the one that works best for the individual turner.

Outside

As he shaped the outside and the bark areas became smaller and thinner on the vessel sides, Mike made smaller, slower, more precise cuts, both at the top and on the sides. As he got to the areas on the sides where bark would remain as a feature (looking like long side-burns down the piece), he showed the audience the tear out where the tool hit the bark first on each side of the rotation. He stabilized this remaining bark at the cambium layer using ample amounts of thin CA glue, and, because it soaks in well, he said there was no need for accelerator here. He also used CA glue, with accelerator this time, on the pith to help prevent cracking there. If cracks were starting to form, he would glue in a circle around the pith at a radius defined by the largest crack. He does not use the CA glue on the outer bark itself.

Tenon

Mike noted that one issue in turning the roughed bowl around after completing the outside shape is ensuring that it runs true when put into the chuck. He said that one trick is to stop for a beat at the tenon-shoulder interface before removing the tool. This makes sure that there is a complete, flat 360 degree border at this interface, and this in turn makes the piece sit more centered, firm and flat when it is chucked. While he used a bowl gouge to make his tenon, he mentioned that folks can use anything that works for them and mentioned that a bedan is a frequent favorite of turners.

On a side note, Mike prefers chucks with straight jaws rather than dovetail jaws; he said that he's seen failures with dovetail jaws but never with straight.

(Continued on page 17)

(Continued from page 16)

Inside

After the outside was shaped, he turned the piece around, chucked it, and hollowed with the bowl gouge. At this point, he showed why a subtle convex curve on the tool's wings was so important. In order to get inside under the wings of the piece, he needed some additional room as the rotating wing got in the way on the other side when he went in with the point of the gouge first. To get an inch or two more distance from the backside of the wing rotation, he turned the gouge around (flute at about 9:30) and shear scraped underneath the wings. He said that this technique gives him enough room for hollowing under wings with even very acute angles.

Finishing

For sanding, Mike noted that the best grit of sandpaper to begin with is the one that takes out all of the tool marks. Subsequent grits then remove sanding marks until the turner gets to the desired final surface. For his final finish, he uses TY Finish oil on these pieces and doesn't buff them. He rubs an ample amount of oil on his piece, allows it to sit for 15 minutes and then wipes the excess oil off. Then then the piece is complete. Using a small paper towel as an applicator is important so that the oil goes to the piece and not into saturating a large applicator. He also said that when he began to use this oil, he'd find rough spots on the pieces when he went back to them. What he found was that his cat, with a rough tongue, was drawn to the oil and would lick the oil on the bowls, creating the roughness on the surface.

Mike didn't have time to complete the vase, so he gave it to the club for a member to complete. His demonstration was replete with useful information and advice appreciated by all.

Wounded Warrior Program Schedule (Don Van Ryk)

Session Date	WeekDay	Session Date	WeekDay
7/15/2016	Friday	9/16/2016	Friday

Show, Tell & Ask (Bill Long)

Name	Description	Wd.	Ht.	Ln.	Wood(s) Used
Richard Webster	Small bowl	8	5		Willow
Bob Grudberg	Bowl	16	8		Cherry
Bob Grudberg	Three-corner bowl	7	4		Mix
Bob Grudberg	Open-segmented vessel	11	8		Mix
Jeff Tate	Plate	7	1		Ambrosia Maple
Jeff Tate	Experiment, 2-axis	4.5	4.5		Oak
Jeff Tate	Multi-axis candlesticks	5	3		Cherry
Mike Colella	Bowl	9	3		Locust
Margaret Follas	Plate	12	1		Basswood
Tim Aley	Natural-edge bowl	9.2	3.5		Oak
Tim Aley	Natural-edge bowl	9.7	3		Oak
Steve Haddix	Small bowl	7.5	2		Spalted Oak
Jordan Kitt	Winged hollow form				
Jordon Kitt	Chip bowl				
Jordon Kitt	Bowl				Box Elder Burl
Paul Wodiska	Bud vase	6	3		
Paul Wodiska	Bud vase	5	3		Maple & Purpleheart
Joe Barnard	Natural-edge bowl				
Joe Barnard	Wand	1		11	walnut

Back to Basics (Gary Guenther)

PRINCIPLES OF CLEAN CUTTING by Kip Christensen

**A WOODTURNER'S
CHECKLIST** ☒

Provided for our benefit by AAW

Thirty-five years ago, I attended a wood-turning demo in which Del Stubbs covered the underlying principles of clean cutting. Del explained the universal principles that always apply to cutting wood, and that we can usually trace poor results in woodturning back to the violation of one or more of these principles. Over the years I compiled my own list. The applications are discussed mostly in relation to spindle turning but can be applied to bowl turning, as well.

PRINCIPLE 6: Shavings

Principles

There are two related principles pertaining to the shavings that come off the wood:

1. The quality of the cut is directly related to how little the shavings change direction as they leave the workpiece. Notice the difference in the path of the shavings when making a shearing cut as opposed to a scraping cut. With a scraping cut, the shavings have to change direction about 90 degrees as they separate from the wood. This typically results in shavings that are crushed and broken and a surface that is somewhat torn. With a shearing cut, the angle at which the shavings leave the wood is reduced dramatically. These shavings usually come off the wood as long curls, leaving a cleaner cut with little or no torn grain.

2. Shavings must have a clear exit path. Examples of how common tools are designed to facilitate the removal of shavings include gullets in front of saw teeth, flutes in drill bits, and the window in a hollow-chisel mortising bit.

Applications

Direction of exit path

Experiment to see how changing the tool's approach angle from 90° to 30° or 45° impacts both the quality of the shaving and the cut. This concept is illustrated well in *Photos 9–11*.

Pathway of shavings



Three skew cuts, from left: scraping, peeling, and shearing. Each has its own angle of tool presentation and resulting pathway of shavings. The smoothest surface will result from the shearing cut, but each has its purpose.

(Continued on page 20)

(Continued from page 19)

Clearance of shavings

Clearing the shavings is particularly important when forming V-grooves with a skew. A V-groove *can* be made with one pass of a skew, but this results only in the wood fibers being severed and pushed to the side, with no wood being removed. The fibers on the shoulders of the cut will be crushed and will not take a finish properly. A minimum of three cuts is required to produce a clean V-groove. The first pass cuts the fibers and pushes them aside, making room for the shavings to exit on subsequent cuts, which deepen and widen the V-groove. Also, cutting V-grooves before cutting a bead allows for removal of shavings and clearance for the tool as the bead cuts are made.

PRINCIPLE 7: Tool Clearance

Principle

There must be clearance for the cutting tool to prevent friction and binding.

This clearance (also called “set”) is designed into a saw blade by making the teeth cut wider than the body of the blade so the saw doesn’t bind in the cut.

Application

In woodturning, tool clearance is particularly important when making deep cuts with a parting tool. Most parting tools are not designed with a tip that cuts wider than the body of the tool. As a result, deep parting-tool cuts require that successive cuts be made to keep the cut wider than the tool itself. When making deep parting-tool cuts, cut only until you feel some extra resistance, then back the tool out and begin a new pass to slightly widen the cut (*Photo 12*). Continue repeating this process until the desired depth of cut is reached. This principle also comes into play in obvious fashion when coring out nested bowls.



Kip's **Principle 8: Amount of Cutting Edge Applied** will appear in the August issue of the MCW Newsletter.

Second AAW Symposium in Five Years (Bill Long)

In June 2011, I was still working as a business economics consultant, making trips up and down the East Coast to market a new software application to law enforcement agencies, and occasionally traveling to Europe to confer with the software developers. I had just recently re-connected with the woodworking lathe, following attendance at a November 2010 presentation by David Ellsworth at the Renwick Gallery (at Steve Keeble's suggestion), where I met Phil Brown for the first time. So in June 2011, taking a break from my consulting work, I showed up in St. Paul, MN, to attend the 2011 AAW Symposium. I spent more than a bit of time with Gary Guenther there, learning about woodturning and Gary's appreciation of good food and a good glass of wine.

You all know of David Ellsworth, and you know Phil Brown. Steve Keeble is a wood art collector. He lived in Chevy Chase when I first met him, and he and his wife Karen now live in Asheville, NC. He was a friend before we knew we had a connection via woodturning – Karen and Laura, my wife, got Steve and me together.

Last month I attended my second AAW Symposium in Atlanta. Lots of pieces of wood turned in the meantime, more than a few thrown out, a bad time with a concussion that resulted from a traffic accident, a couple of woodturning scrapes, buying my own lathe – lots of changes, but some things seemed to be the same. Gary was there, Phil was there, David Ellsworth was there, Steve was there.

About the rotations (I still want to call them sessions, but someone must have thought that 'rotation' and wood 'turning' just had to go together), I had to pick and choose like everyone else. So I watched Liam Flynn work on his 'Inner Rimmed Vessel'; I thought he might be working in the same environment as one of my cherry bowls, the one with vertical sides and the stair-stepped treatment of the inside. But his work was not much like mine, though his working on a challenging treatment of a bowl's inner surfaces was something I connected with.

My next treat was watching Jean-Francois Escoulen use a new-to-me chuck designed to make the technical work of multi-axis turning much easier; even so, the really hard work of imagining the shape one wants to make is still not mainly a hardware or technology issue.



(Continued on page 22)

(Continued from page 21)

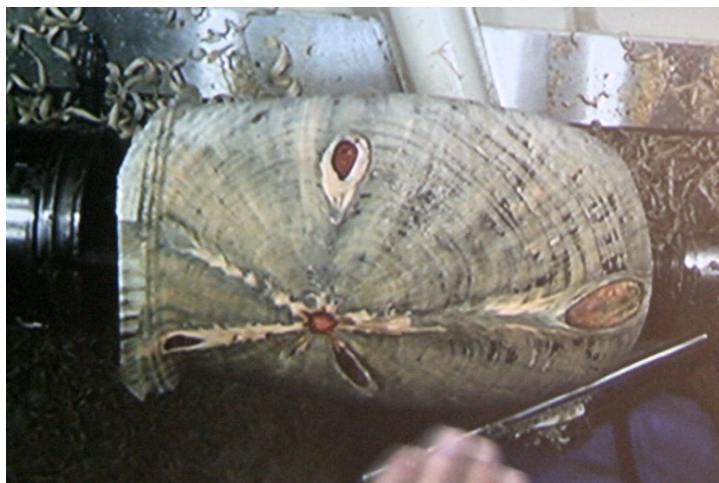
After that I took in Beth Ireland's treatment of box-making. She made a box, like an old-fashioned box, that is. Four sides, a bottom, an opening at the top, and a lid. No lathe work needed, except for finishing it on the lathe so in the end it would be round. Oh, and it was only about 2" wide and about 7" tall. The work involved a significant amount of band saw work and gluing.

Then I had another treat – Dixie Biggs. She is an 'imager'. She sees layers and reliefs and relations among layers and light and dark places. She does this all working on a piece of wood where her carving touches a layer in the platter that is only about a third of an inch thick. She imagines the shape and moves from one layer to the next in very deliberate steps. All of this based on patterns of real leaves. Delightful.

Next came a demo by Dale Larson – an insightful view into the daily work of a production bowl maker. Dale uses wood from where he lives in Washington State, mostly big-leaf maple, one of the hard maples. He does what every production bowl maker does, with a pipeline: log, chunk, bowl blank, wax to slow down the drying, etc. But, unlike some of who stretch out the process from dry bowl blank to finished bowl, he does it all in one session on the lathe. And he slathers his blanks with oil all the time he is turning it.

Reflections on wood and its properties were next on my agenda – guided by John Jordan, the guy we associate with turned pieces and turning tools. Bowls and bowl gouges are fine, and necessary aspects of turning, but then there is the wood – cross and with grain, of course, hard and soft, straight grain and squiggly, wet and dry. That was a good lesson. See this month's Click It article for more about John.

Franck Johannesen came next with his piece of Norfolk Island Pine, taken from a tree about 10" in diameter. The 'ingredients' of his approach have much to do with 'seeing' the final result he wants. He then positions the piece of wood and repositions it through several iterations so that in the end he can produce the desired effects of showing the limb sockets in all their brilliant colors.



My last foray into the rotation space was to drop in on Mike Hosaluk's demo of the making of a curved piece made by turning a tall slender piece, then cutting the piece into several segments on the band saw, orienting the cut so it is on the bias rather than straight across. That produces several segments of the turned piece, with a diagonal cut between neighboring pieces. Of equal interest was his presentation of gluing. He used a wash of conventional wood glue and water, half

(Continued on page 23)

(Continued from page 22)

and half, and painted each side of the wood at the cut, allowing the wash to dry completely. Once that was done with each of the segments, he proceeded to put the segments together, rotating a piece 180 degrees before gluing. He put glue on both pieces, and then rotated the pieces together with glue in the joints so the glue would set very fast – about 2 minutes for each joint.

I met David in one of the hallways; we stopped and chatted for a few minutes. I have the distinct impression that he doesn't forget any of the turners who have come to his little turner's haven in Pennsylvania for a weekend class. I had taken three pieces to Atlanta for the Instant Gallery, so I showed him the piece I made of Poplar Burl – the woods on his property contain a lot of poplar trees and he harvests those trees for blanks for his students to use. He said he had never seen a burl on any of his poplar trees.



So we all go to the Tradeshow at a Symposium, don't we? I made sure my visits didn't interfere with sitting in any demonstration, of course. I looked over tool rests at Robust Tools, the carving jig at Trent Bosch Tools which was used in one of the demos, and a very interesting vacuum chuck at the Frugal Vacuum Chuck stall: didn't spend money, just looked and learned. Then came a stop at Lyle Jameson's booth, and a careful look at his hollowing tool. I was interested, both in the tool and in him. Moved on, found VM Woodworking where I bought two LED lights on crooknecks attached to magnets, then found a couple of stationary LED lamps with magnets on the backs at Cindy Drozda's. And then I circled back to Lyle's booth and bought his hollowing tool.



All in all, this was a very good AAW Symposium for me – the conversations with old friends, the rotations, the tradeshow experience with some new gadgets and tools, some old work getting good reviews, some new work and approaches to try out – maybe I have to plan now for another return in 2021!

Oh, and the experience with Gary over good food and good wine five years ago got renewed, this time with Vicky, his wife, also along for good company.

Beads of Courage Review (Gary Guenther)

Thanks to everyone who participated, our 2016 MCW Beads of Courage Program, Directed by Jeff Tate, has been a great success. While this is a continuing Program, and I know that several people, including Jeff and Stan Wellborn, are making more BoC boxes for delivery this year, after our recent visit to Hopkins, I think it's a good time to look back at what it's all about and what we've accomplished to date.

Here is a good article that gives some background into what the international Beads of Courage program is all about www.bechildcanceraware.org/beads-of-courage, and the following article has some examples of the individual beads and what they are for.

<http://mix941kmxj.com/cmn-beads-of-courage>

MCW got into the program last year by participating with the American Association of Woodturners, our national organization, and delivered a number of BoC boxes to them at the Pittsburgh Symposium. These boxes were distributed to pediatric oncology units in the Pittsburgh area. <https://picasaweb.google.com/106891946865477202075/MCW2015BeadsOfCourageDonations>

This year we decided to keep it local and formed a liaison with Johns Hopkins Pediatric Oncology unit in Baltimore. Here are the boxes you made and donated:

<https://picasaweb.google.com/106891946865477202075/6283296442187191809>

Jeff and I delivered these boxes and wands to Stephanie Davis, Senior Associate Director of Development, at the Johns Hopkins Children's Center Pediatric Oncology unit on June 3. Director Davis (final photo at the end) was very grateful and gave us a tour of their impressive facility. During this touching and satisfying experience for us, she presented several of the boxes, including both of Bob Grudberg's, on the spot, to their gleeful new owners and parents. By now, all of the boxes and wands are in appreciative hands.

To help give you a small impression of what took place during this intense and rewarding lifetime experience, here are a few photos of the recipients.

Eliot Feldman's small box went to a mother whose seriously-ill child we met. She has just one special "bumpy bead" to keep in it. (Bumpy beads represent significant "challenges".) This box is smaller than we normally recommend, but it turned out to be just perfect in this situation. She was very excited to have it; the smile in the above photo says it all. Priceless.



(Continued on page 25)

(Continued from page 24)



Montgomery County Agricultural Fair (Tim Aley)

It's that time of year again.

Join us at the Montgomery County Agricultural Fair!

It's that special time of the year again so start making plans, make some items to enter in the arts and craft, turn some tops beforehand to donate, and sign up for several demonstration time periods.



This year's Theme – Making Tracks to the fair!

Details for participating in this year's fair as an MCW member

We have another great opportunity for MCW members to conduct daily turning demonstrations at the upcoming Montgomery County Agricultural Fair August 12-20 at the fairgrounds located in Gaithersburg, MD. We've had a great MCW volunteer turnout the past few years and hope we can continue with continued member participation this year.

The Montgomery County Carvers will be joining us again this year, but will take over the adjoining 10'x10' area of the shared 10'x20' tent. We will be located in the same great location in the Old Timers area as last year with the continued tent arrangement with closable side panels all around to keep out any inclement weather.



We are staffing each day from 10:00 a.m.- 8:00 p.m. with shifts consisting hours from 10-3 or 3-8 with a lot of flexibility to accommodate individual schedules. Each shift needs to have two MCW members present. In addition, the Carvers will be staffing each day with two of their staff demonstrating wood carving of many types.

MCW Fair Committee – Volunteers Needed

Again this year, we would like to set up a small committee of 3-4 members to assist with the setup and takedown of the MCW Fair demonstration area. If you are interested and willing to volunteer, please contact Tim Aley at Taley16922@aol.com or call 301 706 6291.



(Continued on page 27)

(Continued from page 26)

MCW Fair Volunteers

We need to have MCW members to volunteer for demonstration slots for the 10-3 and 3-8 time slots from Saturday, August 12th thru Saturday, August 20th. You're encouraged to sign up for one or multiple slots. Given work schedules and other personal commitments, the time slots are very flexible, so if you need to come or leave an hour later or early, that is fine. Just specify any variations when you sign up. We will also need members to assist with set-up and takedown, so sign up, if you can help with that as well. You can sign up now by emailing Tim Aley or at the July or August MCW meetings. In addition, a separate email from Tim Aley will be sent out also asking you to sign up during July and early August. Tim will provide final schedule confirmations just prior to the start of the Fair with the free Fair passes handed out at the August 6th meeting.

[A Reminder: You must be an MCW member to demonstrate at the Fair.](#)

Fair Dates & Times:

Fair dates: Friday, August 12th through Saturday, August 20nd, 2016

Fair Hours are 10:00 AM to midnight each day except for opening day on Friday, August 14th with an opening time of 3:00PM

We demonstrate in the Old Timers area, which is open on Sunday starting at noon, August 14th through Saturday, August 20nd. We actually start demonstrating on Saturday, August 13th.

MCW Key Dates & Time:

- **MCW, MCC, and Woodworkers Club Setup:** Friday, August 12th 10:00am – 3:00pm
- **MCW & MCC demonstrations:** Saturday, August 13th – Saturday, August 20nd
 - 10:00 a.m.-3:00 p.m. — Morning Shift
 - 3:00 p.m.-8:00 p.m. — Afternoon Shift
- **MCW, MCC, and Woodworkers Club Shut Down:** Sunday, August 21st, 10:00 -12:00

Location:

Montgomery County Fairgrounds, Gaithersburg, MD

For additional fair details, directions, maps, etc. check them out at: <http://www.mcagfair.com/>

(Continued on page 28)

(Continued from page 27)

Demonstration format:

We will be set up under a 10'x20' tented area with a large shade tree providing additional coverage. Our location is in a high traffic and prominent area directly across from the Blacksmith's area and the Old Timers Building.



Members of each two-person team can alternate between demonstrating and interacting with the public. In addition, we will have the Spring Pole Lathe available for doing basic spindle turning demonstrations.

Demonstrations consist of explaining the basic concept of turning to the audience, any history or perspective of turning that you can provide and lots of Q&A along with very basic demonstration techniques of turning. The focus is on demonstrating and engaging the audience and not necessarily trying to complete any finished objects. So, you don't need to be an advanced turner at all. Turning can be anything you like. We will have 2-3" thick by 20" billets available for use on the Spring Pole lathe as well as a variety of smaller bowl blanks suitable for the Midi-laths. You can also bring your own wood and/or project to demonstrate on as well.

Actual Demonstration Suggestions:

Keep it simple. Most observers will be interested in the basics.

Open with a brief history/perspective of turning.

Keep the dialogue going – Plan to spend more time talking than turning.

Encourage Q&A – This should be educational and informative.

Talk about MCW – who we are, what we do, encourage attending a meeting, if they are interested.

We will have MCW brochures available for the taking.

(Continued on page 29)

(Continued from page 28)

What to Turn:

Whatever you are comfortable with... It doesn't have to be a finished product. Between-centers spindle turning will be the norm on the Spring Pole Lathe as the headstock arrangement is set up for only spindle turning.

A chair rung with a series of beads and coves is likely a good, basic demonstration, a tool handle or a gavel will suffice along with some very basic skew work.

Use green wood, which should be really easy to turn for demonstration purposes and less challenging when talking to the audience.

If you want to get fancy, turn a continuous stream of shavings from a piece of green wood to impress the audience, which should be easy with any of the green wood.

What will be provided on site:

One Jet Midi-lathe, One Nova DVR Lathe and the Spring Pole Lathe will be set up under half of the 10'x20' tent. The MCC will be setting up workbench(es) in the other half of the 10'x20' tent area.

A sharpening station and sharpening accessories will be available.

A basic set of turning tools, chucks, accessories and supplies for the lathes will be available.

Face shields and safety glasses to promote good safety habits

A portable, light-weight display table will be set up and taken down each day for the display of sample turned objects, and MCW information.

Large, lockable tool boxes will be on site for the storage of most tools, accessories, supplies and loose parts. While all the necessary tools will be provided and stored in the tool boxes, you are encouraged to bring your own favorite turning tools and accessories that you can easily carry.

Several sitting chairs will also be available for your comfort.

What volunteers will likely want to bring:

Bring your own set of basic turning tools (spindle roughing gouge, spindle gouge, detail gouge, bowl gouge, scraper, parting tool, and skew chisel should be sufficient) and a calipers to demonstrate sizing techniques.

Diamond stone or slip stone to touch up your tools might be helpful. Since most of the wood will be green, there should be limited need to even touch up your tools. There will be rolls of sandpaper (150, 240, 320 grit) available for your use. Use the shavings to burnish the work.

There will be some limited amounts of finishing supplies such as some BLO and wax for very basic finishing and pen-turner's finish.

Bring a bottle of water or plan to purchase refreshing lemonade at one of the nearby stands. There is also a free tea and lemonade stand for volunteers with badges.

(Continued on page 30)

(Continued from page 29)

Demonstration Time Slots and Duration

While the fair is open from 10:00 a.m. to midnight, the mid-day and early evening time period up to about 8:00 p.m. is the prime traffic time. Demonstration periods have been set up for 10 a.m.-3:00 p.m. and 3:00 p.m.-8:00 p.m.

Given many members' work schedules and other commitments, time slots are very flexible, it's OK to arrive a little later and closer earlier, if no traffic is occurring. If you have a lot of traffic at closing, it's your discretion how long you continue demonstrating.

Demonstrators are asked to take set up or take down the display table, sample turned objects, and MCW brochures. The large, Stanley storage chests are used to store the items. **A key for the Stanley Lockable Storage Boxes will be hidden, with the location provided to all the volunteers for accessing and storing items.**

Other points of interest:

Passes – Free Day Passes will be provided at the August monthly MCW Meeting since we are volunteer demonstrators. Some passes may allow parking, but it tends to be at the opposite end of where we are demonstrating. The best approach is to park at the designated Lake Forest Mall area and take the shuttle to the Chestnut Street Entrance. The Shuttle Bus will be dropping you off roughly a block away from where we are demonstrating. Plan what tools and items you plan to bring so you can carry them on the shuttle bus.

Parking – There is some parking on site depending on the traffic and your specific pass restrictions, as well as free parking and shuttle service from Lake Forest Mall.

Liability – The Old Timers Group who hosts us has liability coverage. In addition, since this will be an MCW sponsored event, members with MCW membership will also be covered by our liability insurance.

Christmas Tree Ornaments

As an annual tradition, we've been asked again to make ornaments for the Old Timer's submission to the fair's Christmas Tree Decorating Contest. Our contributions have greatly helped in the Old Timers winning the Christmas Tree Contest for the last two year. Any ornaments on the small scale are appropriate, such as tops, snowmen, and icicles, carved Santa, or other holiday ornaments. You can either turn an ornament beforehand and give to Tim Aley at the August 11th MCW meeting or turn an ornament while demonstrating at the fair.



(Continued on page 31)

(Continued from page 30)

Enter your Woodwork!

DEPARTMENT 71: ADULTS (20 yrs+)
ENTRIES RECEIVED

- Wednesday, Aug. 10 from 3–8 p.m.
- Thursday, Aug. 11 from 3–8 p.m.

ARTS AND CRAFTS ANIMAL OF THE YEAR FOR 2016 IS THE **SEA TURTLE**
(Selected categories you may be interested in)

METAL AND DECORATED WOOD

- 350. Metal craft (blacksmith work, metal turning, hammered bowls welded work, etc. other than sculpture).
- 351. Hand decorated metal (embossed metal, tin punch, engraved metal, painted metal, etc. other than sculpture).
- 352. Hand decorated birds—a purchased figure that has been painted.
- 353. Hand decorated wood any method (boxes, novelty, painted, etc.).
- 354. Wall plaques ready to hang (other than decoupage).
- 355. Design of string or wire on sturdy backing ready to hang as one item.
- 356. Enameling.

WOOD CRAFT

- 368. Wood craft (hollow ware/flat ware, plates, bowls, etc.).
- 369. Wood craft, spindle turned items (gavels, baseball bats, etc.).
- 370. Wood craft, flat work (bookends, small chest, etc.).
- 371. Wood craft, large flat work (items requiring more than 36" w x 24" d x 36" h wall or floor space are to be exhibited in the Home Arts Building).
- 372. Wood craft, hand carved, painted or unpainted aquatic birds.
- 373. Wood craft, hand carved, painted or unpainted non-aquatic birds.
- 374. Wood carvings other than birds.
- 375. Novelty wood craft (carving, inlay, etc.).

All details and other categories can be found at
<http://mcagfair.com/data/upfiles/media/2016%20Catalog%20052616.pdf>

Creative Crafts Council (Phil Brown)

CCC Exhibit Opportunity in 2017

The Creative Crafts Council, of which MCW is a member, will hold its next juried exhibition at Strathmore Mansion from April 8 to May 21, 2017. Delivery of selected pieces for this multi-media craft exhibit will be on April 3, 2017. The time period of submitting photos and description of pieces online has not been set, but will likely begin in January. So if you are planning to create new work for this exhibition, it would be prudent to complete it by December so that it can be photographed at that MCW meeting, if you are not taking your own photos.

The Creative Crafts Council is a voluntary collaborative effort by 11 crafts guilds in our metropolitan area and Frederick, MD, for the purpose of staging a juried exhibition of craft-art every other year (www.creativecraftscouncil.org). This exhibition is held on the first and second floors of Strathmore Mansion, located on Rockville Pike in North Bethesda. This is their best art exhibition money maker. MCW is a CCC member, jointly with Capital Area Woodturners, and our two AAW chapters support the CCC with annual dues. This membership provides our chapter members with a lower entry fee than for non-members. The CCC awards a first-place cash award in Wood, and our two chapters have the option of providing a cash award for the best turned wood piece. Gerry Headly is the CAW representative on the Council, and Phil Brown represents MCW. Phil is also the CCC treasurer.



30TH BIENNIAL EXHIBITION
June 6 – July 26, 2015

Creative Crafts Council

Opening Reception: Thursday, June 11, 7pm- 9pm
The Mansion at Strathmore, 10701 Rockville Pike, North Bethesda MD

Last year's promotional card, with Tim Aley's natural bowl.

Click It (Gary Guenther)

A recommendation of a web site link I believe to be worth your viewing time:

www.johnjordanwoodturning.com

Bill Long and I both attended one of John Jordan's demonstrations at the recent AAW Atlanta Symposium. That seems a good enough reason (plus all the ones below) to highlight John's web site as our Click It pick this month.

If he lived in Japan, John Jordan would be considered a Living National Treasure -- a term for those designated as keepers of important intangible cultural properties. (This term would also be applied to the likes of David Ellsworth, Al Stirt, Mark Sfirri, and other woodturners whom we revere.) But in our culture, this living legend of woodturning is just another dude from TN who makes stuff out of wood and teaches others how to do it, as well. John demonstrated his carving and texturing techniques for MCW in October 2009:

<https://picasaweb.google.com/106891946865477202075/MCWOct09Demo>

You may also recall that Dale Bright showed us his own John Jordan two-way shear scraper in his recent demo for MCW.

How can you not appreciate a professional woodturner who says things like this: "Probably the single largest influence at any time is the work I am currently making. It never fails to provoke and provide ideas. I am always curious to find out what I will do next." Sounds just like us, right? That's because he is! He just works at it.

In all honesty, John's web site, which is loaded with content, has some technical problems with blank areas and internal movement difficulties, but it's well worth the effort to work through the problems and use the browser "back" arrow as needed. The tabs along the top lead to the following topics of interest:

The Gallery: www.johnjordanwoodturning.com/John_Jordan_Woodturning/Gallery.html

His tools:

www.johnjordanwoodturning.com/John_Jordan_Woodturning/Tools_and_More.html

Technical articles: This one is frustrating because the eight articles are invisible! But they're there – cursor over the blank "page", and you'll see their link names appear, if your browser works like mine. www.johnjordanwoodturning.com/John_Jordan_Woodturning/Tech_Articles.html



(Continued from page 33)

Links: John has a nice assortment of links. I like the ones that show as thumbnails of other wood artists' works. The names appear when you cursor over them.

http://www.johnjordanwoodturning.com/John_Jordan_Woodturning/Links.html

John had to cut down an old, much-loved sugar maple near his house, and he celebrated its life by sending pieces of it, on request, to nearly two hundred turners who would, in return, send back a photo of what was made. The tree ended up being shipped to all corners of the US and also to Brazil, England, France, Germany, Japan, Australia, Canada, Denmark and New Zealand.

http://johnjordanwoodturning.com/John_Jordan_Woodturning/The_Voice_of_a_Beloved_Tree.html

Here are some of the things that were made:

http://johnjordanwoodturning.com/John_Jordan_Woodturning/Tree_Gallery.html#grid

Tim Aley turned some of the wood. Here's Tim's page showing the piece he got and what he made from it. http://johnjordanwoodturning.com/John_Jordan_Woodturning/Tim_Aley.html
I'm the proud owner of one of those bottle stoppers.

Video View (Gary Guenther)

Free, online woodturning demonstrations for your viewing pleasure

This month you get not one, but (currently) one hundred and nineteen videos on woodturning, finishing, sharpening, gluing, carving and texturing, and just about anything else you can think of. AAW is providing a new service they call "Video Source" at

http://aawvideosource.org/php/video_detail_view.php

This site is a catalog of links to woodturning-related videos (existing in the Public domain) that AAW thinks are particularly useful. The videos have been pre-screened by the AAW for quality, content, and production, as well as safety, and they are searchable by topic area.

They will be adding more videos regularly and encourage your participation to help keep the site relevant -- if you would like to suggest a good woodturning video for this site, just click their "Submit a Video" button at the top of the page. Your suggestion will be reviewed for quality and safety, and, if approved, it will be included in the catalog.

Safety Note: Some videos have safety concerns noted to the right of the video title and duration. Remember that turning safety is the responsibility of each turner. No technique, practice, or method is safe for each and every turner. What is safe for one turner may be dangerous for another. Do not attempt any activity that is risky for you.



Your Mileage May Vary (Gary Guenther)

Tips

Hints

Ideas

Clues

More Woodturning Magazine is a monthly, online publication for turners who primarily turn wood. It is designed to provide educational material and guidance in woodturning techniques and to keep readers informed about what is happening in the woodturning world. Annual subscriptions can be purchased for the very reasonable cost of \$25; this allows visitors to read the magazine content online or print it out for easy reading. Each edition is released on the first day of the month and announced to subscribers via email (with a link for ease of access). According to Publisher and Editor Dennis Daudelin, a self-professed computer geek and one-time production turner, their goal is to provide new and valuable information for individuals interested in wood turning and turned wood, including woodturning project tutorials and articles, turner profiles, product reviews, new product announcements, and general news of interest to woodturners. Dennis took over the reins from Fred Holder a couple years ago when Fred retired after publishing over 180 editions in 20 years.

To help newsletter editors, *More Woodturning Magazine* has created a Club Newsletter Support Program -- a free service for registered club newsletter editors who receive a monthly email containing a list of woodturning events and a step-by-step tutorial or article which they can include in their newsletter in several formats including a link to a web page that displays the content.

I thought this well-illustrated, 7-page article by John Wolf, with detailed instructions for making a **goblet with a captive ring**, was quite good, so I am presenting it here to you for your interest and enjoyment: www.morewoodturningmagazine.com/articles/turn-goblet-with-captive-rings.pdf

For more information and to subscribe to the magazine, please visit their web site at www.morewoodturningmagazine.com

**MORE
WOODTURNING
MAGAZINE**
YOUR MONTHLY ONLINE WOODTURNING MAGAZINE



Your Mileage May Vary Sidebar (Gary Guenther)

Tips

Hints

Ideas

Dennis J. Gooding Design Graph for oblate spheroids

Last month, guest author Dennis Gooding provided us with a simple, practical, graphical method for determining the dimensions for marking cuts to convert a cylinder into a sphere by cutting off the corners in a series of successive, mathematically calculated approximations. It's a quick, easy, and effective way for turning a sphere without the jigs, shadows, and frustrations of multiple iterations.

Dennis has now extended this valuable technique to the creation of oblate spheroids. "Why would I want to make an oblate spheroid?", you ask. How about because that is an ideal shape for the globe portion of tree ornaments!

On the WoodCentral Turning forum, Dennis has provided the new graph and directions for using it: www.woodcentral.com/woodworking/forum/turning.pl/page/2/md/read/id/494299/sbj/spheroids-anyone-long/

Here are two images showing how it works from the 16-sided approximation to final shape:



Note: This example was a test of the method for turning the outside shape. For a real ornament that will be hollowed, I recommend leaving more meat in the chuck-end connector for stability until after the hollowing is complete.

Thanks again, Dennis!

Always use common sense. Things that work in one situation may not work in another. Follow all Safety Rules. If it feels wrong, it probably is; stop and rethink. Your Mileage May Vary

MCW Resources (Gary Guenther)

MCW Hands-on Mentoring Program

Hands-on mentoring is one of the most effective ways of learning turning techniques, tool use, and safety. We all have unique knowledge and ideas to impart. We encourage all Members to sign up to share a few hours of their time and knowledge at the lathe with each other, on a peer-to-peer basis, either in their homes or at Skills Enhancement sessions. We particularly encourage our new Members and beginners to use this opportunity to learn techniques and safety. Please let Gary Guenther know if you would like to participate.

Skills Enhancement: Once a month, we have an open lathe session at WWC, alternating on the Fridays and Sundays after the Meetings, under the guidance of Matt Radtke and Eliot Feldman. Please check the Newsletter and Web Site Calendars for monthly dates and reserve a limited slot with Matt. Everyone shares skills and information, and it's lots of fun.

"Freewood" email list: Free wood (a.k.a. "road kill" or "found wood") is often available in neighborhoods around the County. Webmaster Carl Powell has created a "freewood" email list to permit list members to broadcast the location of found wood in a timely manner. This is an opt-in Program. If you would like to join, please contact Carl Powell. If you are a list member, you may post a descriptive email to all other list members by sending an email to freewood@montgomerycountywoodturners.org. Please describe the location, type(s) and sizes of wood, and any contact information, requirements, restrictions, and limitations.

New MCW Facebook Group: President Ellen Davis has created a new Facebook Group just for MCW Members. The idea behind this is to allow you to post pictures of your work (gives others inspiration), ask questions that our members can answer, and provide another venue for our members to get to know each other better. She is a member of several other woodturning groups via Facebook and has had great feedback from the work she posted and has received invaluable help when she asks questions. For our MCW Facebook Group, please click the following link <https://www.facebook.com/groups/194941367515051/> and request to be added to the group. If you do not have a Facebook account and want one, please contact Ellen. We have over 40 Members involved.

MCW Lending Library: Books and DVDs are available for rental. We have a good selection of video demonstrations and instructional materials from many top professional turners. If you missed a Meeting and would like to see the Program, you can check out the DVD. Please sign the form to check them out and pay John Laffan or Phil Brown \$2. If you have titles out, please return them promptly.

Silent Auction: Not everyone has access to a chainsaw or a band saw, which makes it nice to have access to reasonably-priced, properly-sized turning blanks. Thanks to the generosity of Phil Brown and other Members, our Silent Auction provides this benefit at every Meeting. Please bring your road kill to share with other Members.

(Continued on page 38)

(Continued from page 37)

Discounts: Steve Drake has assembled a selection of retailers who provide MCW Members with monetary discounts. First and foremost, of course, is the Woodworkers Club, but we have a number of others too. Please check out the list of participating merchants on the Web Site or at the end of each Newsletter.

Web Site: <http://montgomerycountywoodturners.org> Thanks to Webmaster Carl Powell, we have an outstanding Web Site. It has current information on meetings and activities, and is loaded with articles on practical *Tips* ("YMMV") and *Safety* and *Handouts* from previous Demonstrators, as well as links to over 350 captioned *Photo Albums* from all of our Meetings, back to our formation in 2007.

Newsletters: Thanks to Newsletter Editor Bill Long, all Members receive the 2016 AAW *Best Chapter Newsletter* www.woodturner.org/?page=ChapterWinners by email every month. Further, the MCW Newsletter Archive, accessible from the Web Site tab, is a tremendous resource, containing the complete history of all MCW programs and activities from day one, as seen on a monthly basis through the years. All past issues back to Volume 1, Issue 1 in 2007 are available at <http://montgomerycountywoodturners.org/Newsletters.html>

Our Hosts: Our most important resource is our space. We are deeply indebted to our hosts, the Woodworkers Club, for their continuing support in sharing their facility with us as we move into our tenth year. Please give Amy, Chris, Matt, and Ralph your individual expressions of appreciation, both verbally and with your wallets. If you need something, they will get it for you, either off the shelves or from the catalog – with no shipping charge.

Treasury Report (Phil Brown)

Income Items			Expense Items		
June Income:			June Expenses:		
	Membership	\$25.00		Demonstrator	\$345.00
	Demo fees	300.00		Exhibitions - CCC dues	50.00
	Total income	\$325.00		Total expenses	\$395.00
	Total funds available	\$4,917.04			

Member Discounts (Steve Drake)

Woodworkers Club Rockville, Maryland – woodworkersclub.com. The Woodworkers Club, a Woodcraft affiliate, offers MCW Members a 10% rebate on all regularly priced items. After reaching certain plateaus of spending, you will become eligible for a rebate which you will receive by email and is good for 3 months. Non-qualifying items are power tools, items already on sale, gift cards, and items from companies that prohibit discounting (Festool, SawStop, Leigh, and a couple others). Our relationship with Woodworkers Club is very synergistic and important to us, and I encourage you to make your woodturning and woodworking purchases from them. If they don't have something in the store that's in the Woodcraft catalog or on their web site, they will get it for you, and you can save on shipping by picking it up at the store.



Exotic Lumber, Inc. Frederick, Maryland – exoticlumberinc.com.

With over 130 species in stock, Exotic Lumber has one of the widest selections available on the East Coast. We offer a 10% discount to MCW Members with membership badge. We have warehouse locations in Frederick and Annapolis, where you are welcome to select from our extensive selection of turning blocks.



2Sand.com – 2sand.com is a coated abrasive specialist focused on fast service and fair prices providing superior sanding discs, sheets and belts. MCW Member receive a 5% discount (cash or check) at the Gaithersburg store at 8536 Dakota Drive ([800-516-7621](tel:800-516-7621)).



Craft Supplies USA (www.woodturnerscatalog.com) is a family-owned and operated business serving the woodturning community. Individual MCW Members can save 10% on all finishes & disc abrasives -- just mention "Montgomery County Woodturners" and save, all year long.



Hartville Tool (www.hartvilletool.com) is a nationwide retailer of general and specialized tools for woodworking and home improvement. They offer free shipping to all. If you have accepted the MCW offer to "opt in" to be a member of the Hartville Tool Club, you will get a

(Continued on page 40)

(Continued from page 39)

15% discount on all tools (excluding sale items, gift cards, special orders, and Festool products). If ordering online or by phone, mention your Hartville Tool Club membership in the "checkout notes". (The discount will be applied manually when the order is processed for shipment, not at the time of order. The discount will not show on your e-receipt, but it will show on the packing slip that comes with your order.)



North Woods Figured Wood (www.nwfiguredwoods.com)

North Woods is a multi-generational family-owned supplier of wood and wood blanks specifically selected with the woodturner in mind. They specialize in Pacific Coast native species of trees and have sizes from single pen blanks up to 1,500 lb. whole burls. With 20+ species in stock, there is something for everyone. Members get a 15% discount by mentioning their MCW membership during a phone order or by entering "WOODTURNERS" as a coupon code during online ordering.



Future Meetings Schedule (Tim Aley)

Date	Demonstrator	Program
7/7/2016	Carl Powell	Sharpening and Tool Use
8/11/2016	Roman Steichen	Pens!
9/8/2016	Dick Stohr	Professional Spin Tops
10/6/2016	TBD	
11/10/2016	TBD	
12/8/2016	Pot Luck and TBD	
1/12/2017	January Critique	Panelists TBD

Chapter Contacts - Volunteers (Gary Guenther)

Position	Member
<i>Wounded Warrior Support</i> Program Director	Don Van Ryk
<i>Skills Enhancement</i> Program Director	Matt Radtke, Eliot Feldman assistant
Public Library Exhibit Committee	Phil Brown, Russ Iler, Mary Beardsley, Jeff Tate
<i>Turning for Tomorrow</i> Program Leaders	Bob Anderson, Gary Guenther, Ellen Davis
<i>Beads of Courage</i> Program Director	Jeff Tate
<i>Turning Works</i> Program Director	Jack Enders
Montgomery County Ag Fair Program Director	Tim Aley
<i>Washington ArtWorks</i> Demo & Exhibit Leaders	Gary Guenther, Rebecca Meyerson, Phil Brown
<i>Turn for Troops</i> Project Leader	Matt Radtke
Lending Librarian	John Laffan, Joe Barnard backup
Videography	Joe Stout, Bert Bleckwenn, Stephen Price, Matt Radtke
Gallery Photography and recording	Mike Colella, Jeff Tate, Tim Aley
Candid Photography	Tim Aley, Jeff Tate, Gary Guenther
Web Albums	Gary Guenther, Tim Aley, Jeff Tate, Mike Colella
Backup Secretary	open
<i>Show Tell & Ask</i> Leaders	Mike Colella, Matt Radtke, Clif Poodry
<i>Show Tell & Ask</i> Recording and Trucking	Richard Webster and Jim Allison
Demo Fee Collection	Bob Grudberg
Setup Committee	Jim Allison, Margaret Follas
Clean-Up Committee	Paul Simon
Member News Reporter	Phil Brown
Discount Deacon	Steve Drake
Brochure Boss	Phil Brown

Chapter Contacts - Officers (Gary Guenther)

President	Ellen Davis	ellen@twistedtree.co (no 'm')	301-728-5505
President Emeritus	Gary Guenther	gary.c.guenther@gmail.com	301-384-7594
Vice President	Bob Anderson	robert.anderson4@verizon.net	301-270-6005
Program Chair	Tim Aley	taley16922@aol.com	301-869-6983
Secretary	Steve Drake	skdjmbd@gmail.com	301-208-8265
Treasurer	Phil Brown	philfbrown@comcast.net	301-767-9863
Membership Chair	Jim Allison	jim-elaine@allison.net	301-706-6164
Newsletter Editor	Bill Long	bpra@earthlink.net	301-530-5626
Webmaster	Carl Powell	cmepowell@gmail.com	301-924-6623

TAILSTOCK (Gary Guenther)

ST&A “Gallery” Album Cover Shot for June

Bob Grudberg is well known for his open-segmented vessels. I was very surprised to find that one of them had not graced this page yet, and this one is certainly worthy.



Bob Grudberg – 11” x 8” open-segmented vessel in walnut, maple, and other woods.

Please enjoy viewing the entire June 2016 ST&A Gallery at
<https://picasaweb.google.com/106891946865477202075/6301224521072524929>