



MCW Newsletter



Vol. 2016, Issue 11

Montgomery County Woodturners

<http://montgomerycountywoodturners.org>

Page 1

November 2016

Next Meeting	1
Agenda	1
Evening Program	2
Editor's Corner	3
President's Perspective	4
General Announcements	5
Member News	7
Meeting Minutes	8
Bring-Back Challenge	12
Last Month's Program	13
Show, Tell & Ask	19
VIDEO VIEW – Instructional Video of the Month	21
CLICK IT – Web Site of the Month	21
MCW Resources	22
Member Discounts	24
AAW Focus	25
Chapter Contacts - Volun- teers	26
Chapter Contacts - Officers	27
Future Meetings Schedule	27
Skills Enhancement Schedule	27
Wounded Warrior Program Schedule	27
Tailstock	28

Next Meeting

Item	Text
Date:	THURSDAY, November 10, 2016
Time:	7:00 - 9:30 PM
Location:	Woodworkers Club 11910-L Parklawn Drive Rockville, MD 20852 (301) 984-9033

Note: Please park in the rear of the building (or the last half of the side) because all the spaces in the front are reserved for short term.

Agenda

Time	Activity
6:30 - 6:45 PM	Set up for Program
6:45 - 7:00 PM	<ul style="list-style-type: none">• Check in your piece for ST&A• Wear your name tag• Meet and greet other Members• Bid on Silent Auction items• Sign out free videos from John Laffan at our Lending Library
7:00 - 7:25 PM	Business Meeting
7:25 - 7:45 PM	Show, Tell & Ask
7:45 - 9:15 PM	Program: Tim Moore - Natural Birdhouse Ornament
9:15 - 9:30 PM	Pay for and retrieve your Silent Auction items, pack up, put the lathe and space back in order.
9:30 - 10:00 PM	Select and pay for classes, workshops, tools, wood, books and other items at the Woodworkers Club store.

Evening Program (Tim Aley)

Natural Birdhouse Ornament by Tim Moore

Tim Moore is the president of Chesapeake Woodturners and a member of the American Association of Woodturners. Tim will get us ready for the holidays by demonstrating how to make a birdhouse ornament. This birdhouse is approx. 1.25" D x 3.25" H and incorporates a unique roof over a natural bark body. Yes, the perch is turned too!



Tim has always liked to make things. One of his first projects of note was a chess set he designed and turned while in high school. Ever since then, the lathe has held a special fascination for him. However, his work as a high school mathematics teacher, summertime carpentry, and raising a family occupied most of his time for many years. When the local school system eliminated the industrial arts program and sold the equipment, he purchased the same lathe he had used as a high school student. He was back to woodturning.



Tim has studied woodturning with David Ellsworth, Bob Rosand, Cindy Drozda, Al Stirt, Don Derry, Bill Grumbine, and others. He can be found on Facebook and at <http://TMwoodturning.com>. Below is his first place winning entry in the juried CW exhibit earlier this year at the MFA Circle Gallery in Annapolis.



Editor's Corner (Stephen Price for Bill Long)

This month we start thinking about making ornaments or small holiday gifts for family and friends. Tim Moore will help get us started with his demonstration at the November meeting.

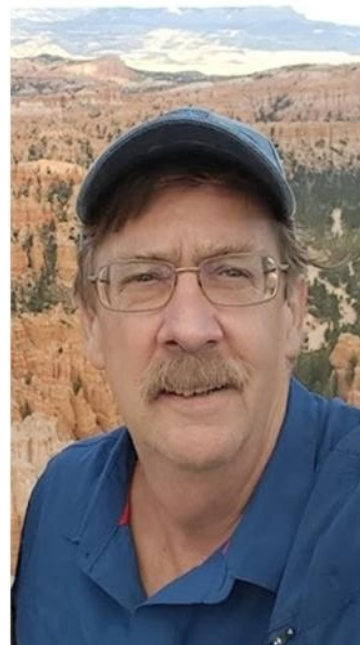
The MCW Newsletter is like many other newsletters I have worked on. There are a few highly-motivated people who produce a large portion of the content every month. A few others produce content on a regular basis, plus a few more submit a little bit, on occasion. To all of them, we all thank you. As the Editor, a “production” guy, I cannot make it happen without content. Gary is going to be backing off in 2017, and I am asking for content from more folks — little tidbits about something you learned, pictures of

a project you are happy with, reviews, or an article about a class or seminar you attended. I can clean up your input if you want, so don't worry about the “I can't write” thing. We need more content to add color and interest.

So in light of that request here is a little on my current projects. First is a 15” walnut wet-wood rough out that is now in the drying bag. I also got a 15” shallow bowl, and two 9” bowl blanks from the same chunk of wood. Yes it was a little on the big and heavy side.

The other wet-wood projects are from a couple of blocks of ash that I got when I went to pick up some cherry. :) The ash was cut the day before and was actually leaking water into the bed of my truck while I was driving home.

This week I delivered some bowls to folks — one hickory and one oak bowl to Lisa, and a large, wet-turned oak bowl to Sandy. I do have two more “give backs” ready to go to folks who gave me some wood to feed my hobby.



President's Perspective (Ellen Davis)

Over the last five weeks I have had a lot of time on my hands as I continue to recover from my most-recent surgery. With that time, I contemplated the concept of perspective. From the lounge chair (that we had to rent for me), my perspective of my home, my family, my recovery, my ability to turn and carve changed.

During this time, I have made more wood-loving "friends" within different social media outlets. I know many of you do not like the policies of some of the companies, nor wish to have your life online, and I respect that, but I've had time, and I wanted to make use of it.

My perspective of the wood world and my perspective of people has been adjusted. How or why you might ask?

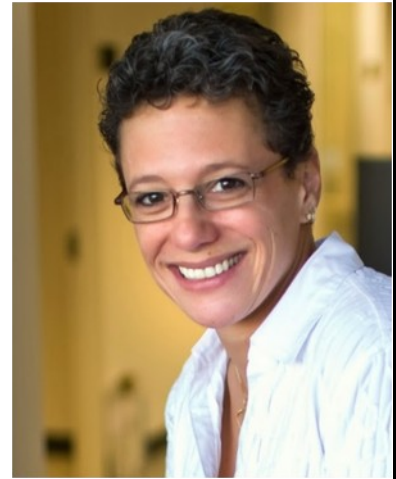
During the last five weeks, I have learned more about turning, carving, finishing wood, oils, colors, etc., but mostly about people. All types of people. People that are similar to me, people that do not have the same political thoughts as I do, people who have diametrically opposed positions on any or everything I believe in, people's personal lives, people's humor (or lack thereof), and much other life-altering information.

The one item that was the constant was their love of what they are able to create, craft, imagine from wood and other items. The barrier of "otherness", of "you don't think like me", of "you don't believe what I believe" disappeared. In its place was a sharing of information, laughter, well wishes, and for some a friendship that will continue once the lounge chair is returned.

Perspective: it's all in your point of view.

Ellen

"He who plants a tree plants a hope" – Lucy Larcom



General Announcements (Gary Guenther)

Skills Enhancement Program: The November session is scheduled for **Sunday, Nov. 13** from 10:00am – 1:30pm. Reservations are required. If you would like to attend, please email Matt Radtke at mattradtke@gmail.com to reserve a space.

Wounded Warriors Program: MCW Program Director, Don Van Ryk, has arranged a new partnership with Walter Reed for our joint Outreach program of pen turning instruction in conjunction with the Woodworkers Club. Sessions are now on Fridays at 12:30 p.m. Please plan on helping out for this important cause. Don will send emails to announce sessions. The next session is scheduled for **Friday, November 4**.

Apply now for Free AAW Craft School Scholarships: Active MCW Members (paid for 2016), who are also AAW Members in good standing, have a great opportunity for a chance at winning a free scholarship to one of three nationally-recognized craft schools for woodturning classes in 2017. AAW will award a total of 28 scholarships divided between Anderson Ranch Arts Center, Arrowmont School of Arts and Crafts, and John C. Campbell folk School. This is very real. Your chances are actually quite good. Several of our Members have won these in past years and benefited greatly from them. I emailed the information to all MCW members and asked for expressions of interest. MCW will send in two nominated names that will be drawn by lot at our November Meeting. You need not be there to win – I'll put RSVP'd names on the tickets. You may email or call me before **6 p.m. on Nov. 9** to participate in the drawing. At this point, I have five names.

AAW Member Survey: The AAW is working to obtain a greater understanding of the global woodturning community in connection with their **Vision 2020** strategic plan. It is critically important to AAW that MCW members' opinions be represented in their planning. This survey explores how the chapter member became interested in woodturning, how they developed their woodturning skills, and why they are, or are not, AAW members. Please see the *AAW Focus* article in this Newsletter for more details. The survey ends on **Nov. 14**. The link to the online survey is: <https://www.surveymonkey.com/r/GQ5GJY2>. I encourage you to participate.

Public Library Exhibits: The traveling MCW Public Library shows are drawn from a group of pieces loaned by you all to Phil Brown for the entire year. Thanks to the contributors, Phil has a fine selection for 2016, and he thanks everyone for their support. **November's** exhibit has been installed by Phil at the Kensington Park Public Library. Please be thinking about pieces to loan for 2017. <https://goo.gl/photos/6ukTJF1sqSdZDW3YA>

MCW Gallery Exhibit and demos at 'Washington Artworks': As previously reported, Washington ArtWorks, went bankrupt. They are now under new management and have a new name (Artists and Makers Studio 2). Things are still in flux, and they will not be inviting outsiders to participate in their events for the near future, so the planned MCW November activities over there are officially CANCELLED.

(Continued on page 6)

(Continued from page 5)

The Virginia Woodturning Symposium will take place **Nov. 5-6**, 2016, in Fishersville, VA. This year's Symposium will be an exciting alternative to Symposiums of previous years, with the format updated from a hands-on experience using local demonstrators to one that features an exciting array of international, national, and regionally known demonstrators. Also included will be an expanded Skills/Future Turners section -- volunteers (and maybe even a demonstrator) will assist attendees seeking help with techniques and methods to improve their skill sets. There will be a wide variety of vendors, many with special prices, and, of course, no shipping costs. To add to the experience, there will be an instant gallery and periodic raffles. For more information or to register, go to www.virginiawoodturners.com

CCC Exhibit Opportunity in 2017 The Creative Crafts Council will hold its next juried, biennial exhibition at Strathmore Mansion from April 8 to May 21, 2017. Delivery of selected pieces for this multi-media craft exhibit will be on April 3, 2017. Plan to submit photos and descriptions online beginning in **January**. If you are planning to create new work for this exhibit, it would be wise to complete it by **December** so it can be photographed at that MCW meeting, if you wish. The CCC awards a first-place cash award in the *Wood* division. Phil Brown represents MCW and is the CCC treasurer. (www.creativecraftscouncil.org)

Reston Show: Call from Phil Brown: **December 11**, 2016 is the application deadline for the Greater Reston Arts Center's Northern Virginia Fine Arts Festival occurring May 20-21, 2017.

Click on juriedartservices.com/index.php?ontent=event_info&event_id=1131&admin_verify_view=true

Photo Web Album Links for October: The October Show Tell & Ask Gallery, Meeting, and Program are well documented in photos of the activities, as is the Quince Orchard Public Library exhibit. (See Kensington Park Library link above.) Please see them here:

Oct. '16: Quince Orchard Public Library display: <https://goo.gl/photos/3wVfEj4i62eW1J8u8>

Oct. '16 ST&A Gallery: <https://goo.gl/photos/xhs9iuoLzAYwqSq1A>

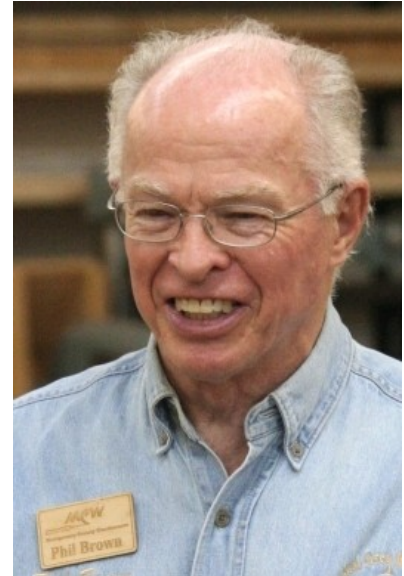
Oct. '16 Meeting: <https://goo.gl/photos/tC8Q8xQ3YRq6w4kF7>

Oct. '16 Program: <https://goo.gl/photos/USy1PLaA4K3es4bZ9>

I am sorry to report that Google has ruined the presentation of our historic web albums, previously at <https://picasaweb.google.com/106891946865477202075>. You can still find them there, scrambled. The links listed chronologically on our Web Site Photo Gallery page <http://montgomerycountywoodturners.org/PhotoGallery.html> still work, so you can still access any of our past albums from there by date. Alternately, you can go directly to their new address at <https://get.google.com/albumarchive/106891946865477202075>. The ordering of the cover thumbnails within the master index album cannot be fixed in the short term. We are not happy with this format, and we hope to find a new host for our photo albums in the future.

Member News (Phil Brown)

Phil Brown, Richard Foa, and Richard Webster will have their work displayed on tables at *JRA Day* from 11 AM to 5 PM on December 3rd at The Women's Club of Chevy Chase, 7931 Connecticut Avenue in Chevy Chase, MD. **Phil** has a small bark-edge cherry piece in the *Small Wonders* exhibit (along with one CW member) in the MFA Circle Gallery in Annapolis, December 2 - 26, 2016. See: mdfedart.com/mfaentry/sales/salesgallery.php?exhibit=74



David Fry offered his bowls at an Artists' Open Studio and Sale October 29 and 30 together with other artists at Rick Wall's studio, 5506 16th Street in Arlington, VA. We regret to inform you that, unfortunately, David unexpectedly lost his wife, Nan, in late September.

Clif Poodry teaches Introduction to the Lathe on Nov 14-15, and Dec 5-6 at the Woodworkers Club, and **Matt Radtke** teaches Beginning Bowl Turning during the evenings of Nov 28-29. A minimum of three students is required to conduct a class. To register, call 301-984-9033, or go to: woodworkersclub.com/classes/

Mark Supik's workshops at 1 N. Haven Street in Baltimore include the following all-day woodturning workshops from 8:30 AM to 4:00 PM for \$150/class, with a 20% discount for AAW and local woodturning club members. Lunch & materials are included. To register, phone or e-mail Nancy Supik 410-732-8414, or nancy@marksupikco.com

The Right Start: Introduction to the lathe, use of three basic tools used in spindle turning, great projects; on Sunday, November 20, and Saturday, December 10.

Bowl Turning: Basic bowl turning from log to finished bowl. No woodturning experience? Please consider The Right Start as your introduction to woodturning. Turned some bowls already? This class is a great review of proper technique to eliminate those catches and save on sand paper. These classes are on Sunday October 23, Saturday November 19, and Sunday December 11, 2016.

More Bowls: Review the basics; then work on bowl design, sharpening, natural-edge and end-grain; on Saturday, November 12.

Not sure which class is right for you? Give Mark a call (410-732-8414) or send him an email:

mark@marksupikco.com

Don't be shy! Promote yourself. Tell us about your woodturning activities in the MCW Newsletter. Send your information by the 23rd of the month to Phil Brown, philbrown@comcast.net

Meeting Minutes (Steve Drake)

Montgomery County Woodturners 10/6/2016 Meeting

Vice-President Bob Anderson called the meeting to order at 7:00 p.m., welcoming approximately 35 members. He reminded everyone to wear their name tags or to talk with Phil Brown if you would like to purchase a permanent, wooden one.

General Announcements:

- Guests included Bev Coker, Sid Stone, and Paul Sandler.
- AAW membership dues have increased from \$55/year to \$60/year. It is still a great deal.
- *Get Well* cards for Ellen Davis and Bill Long were passed around for signatures. We wish them both a speedy recovery from their medical problems.



Newsletter:

The latest issue of the Newsletter is out and, as always, looks great. Stephen Price was going to assume the position of Editor at the beginning of next year but, due to Bill Long's illness, has stepped into the position early and has hit the ground running. A big 'Thank You' and congratulations to Stephen Price for his efforts, and our best wishes for Bill Long.

Bring-Back Challenge and bonus prize raffles:

William Flint won last month's Bring-back Challenge and, for this month, has donated a rocket turned from maple, cocobolo, and lacewood, and a maple spin top with a maple "spin on top" that can be spun on top of it, as he has shown us in the past. The tops were "UFOs" to go with the rocket theme. Tina Chisena won the drawing and will bring something back for next month's raffle. Paul Simon was kind enough to donate a candy bar for a second drawing, which was won by Tom Coker's wife, Bev, who was visiting as a guest. Thanks, Paul; nice thought.

Silent Auction:

The Silent Auction was empty. We have nothing to auction if YOU don't bring something to share. Please pick up some road kill if you can, and bring it in for the benefit of others.

MCW Free Lending Library:

Ellen Davis purchased a new book from AAW for the MCW lending library. "Fruits of Our Labor", by the AAW's Women in Turning, is a catalog of all the pieces (including hers) that went into the collaborative project of the same name that was showcased at the AAW Symposium in Atlanta in June and sold for \$12,000 (to benefit AAW members and programs). (Photo on next page.) You can check out this book, and many other items, from the MCW lending library for free. Please sign out the items from Librarian John Laffan, and please also promptly return everything you borrow.

(Continued on page 9)



“Fruits of our Labor” by AAW Women in Turning

Elections for Officers, and volunteer positions:

Bob stressed that a number of positions are opening soon. The club was started by a group of founding members and they have been passing the torch to new members over the past several years. Of particular attention, we need a new Program Chair and an Assistant Program Chair. The new Program Chair needs to start working with Tim Aley, the current Program Chair, to start things rolling for the 2017 meetings. In addition, we need a backup Secretary or two for when the current Secretary cannot attend a meeting. Also, since Stephen Price has taken on the duties of the Newsletter, he will not be able to serve as the backup person for videography of the Meetings. Someone needs to volunteer for that position.

Facebook page:

The MCW Facebook page is very active and you can talk with Ellen about how to sign up. The link is <https://www.facebook.com/groups/194941367515051/>

WAW Arts Festival

Gary Guenther reported that our planned participation in the Washington ArtWorks exhibit in November is officially cancelled. Their current bankruptcy proceedings are making the issue too uncertain for further collaborations at this time. He also asked if someone else would volunteer as the contact person for any further interactions with a newly-organized “WAW”, as he is stepping down from that position.

Beads of Courage:

Jeff Tate will be taking our bowls to the Johns Hopkins Pediatric Oncology Unit in September of 2017, so everyone has time to make a “box” (a lidded bowl) for him to take. Please start turning things now so we can send the kids a lot of good boxes. BoC beads are avail-

(Continued on page 10)

able that can be worked into a bowl design. Pieces are also welcome during the interim. Jeff will take them up in batches as he receives them.

Turning Works:

Last month, we donated 21 bowls through our *Turning Works* Program to the Interfaith Works charity auction for the homeless. The auction is next Thursday, October 13th. The proceeds will be used to expand their facilities to include more services for battered women, a general medical clinic, and a mental health clinic.

Wounded Warrior Program:

The next session will be Friday, October 14th from 12:30 - 2:30 p.m. at the Woodworker's Club. Volunteer turners are needed. Please contact Don Van Ryk at DVAN-RYK@NIAID.NIH.GOV for more information.

Skills Enhancement:

The next Skills Enhancement is on Friday, October 7th from 10:00 a.m. - 1:30 p.m., with the last 30 minutes reserved for lathe maintenance. They will be concentrating on spindle turning and making tops. Sign up by contacting Matt Radtke.

Future Meeting topics:

Tim Aley asked if people would be interested in discussing the different types of finishing that members use on their work, at either the December or the February meeting. The members felt that this was a good idea and suggested that a number of similar 4" long by 1" diameter spindles be handed out for people to finish differently either at the November or January meeting. These could then be used as examples during the program.

Upcoming Meetings and Symposia:

Segmented Woodturners 5th Segmenting Symposium – Quincy, MA – October 27-30, 2016: The Segmented Woodturners is a virtual chapter of AAW and holds a Symposium every other year. This is the first Symposium to be held on the East Coast and promises to be an excellent event with 42 demonstrations and multiple panel discussions. Details are available at <http://segmentedwoodturners.org/> or by contacting Wayne Miller at wayneomil@segmentedwoodturners.org.

Mark Supik Open Shop and Beer Tasting – October 16, 2016. The annual open shop and beer tasting is a new tradition at 1 North Haven Street in Baltimore. In addition, Mark is having several classes on bowl turning this fall and MCW members get a 20% discount. Check out "What's New?" at his site <http://www.marksupikco.com/>.

Virginia Woodturning Symposium – Fishersville, VA – November 5-6, 2016. Historically, this has been a very hands-on, informal Symposium. This year it promises to be more formal, with a number of excellent national presenters, but they are going to try to keep some sections of it as hands-on as possible. There will also be a number of vendors, raffles, and a gallery.

Exhibits and sale opportunities for MCW members:

Montgomery County Libraries – In October, the traveling exhibit is in the Quince Orchard Public Library in Gaithersburg and will be at the Kensington Park Public Library in November. Phil will be returning items at the December meeting and will be collecting new items for the 2017 traveling exhibit at the December meeting, and thereafter. THANK YOU Phil Brown for setting this up and keep it going. Anyone that is interested in helping him move a display from one library to another should contact him.

Boyd's Historical Society – October 15, 2016. The Historical Society is raising money to repair the historic 1895 Boyd's Negro School and is inviting local craftsman to sell their wares. The cost for a table is only \$40 inside or \$20 outside. This is a great chance for club members to sell some items.

Craft Council – There will be an auction at the January Show, and Phil Brown needs some bowls or other items that can be included in the auction.

Show Tell & Ask:

Thanks to all who brought pieces to show – the table was filled. Keep up the good work. Thanks to Eliot Feldman for conducting the session.

Gallery Photography:

Thank you to Jeff Tate for taking the Gallery pictures of the Show Tell & Ask items and to Bob Browning for carrying the pieces for him. Thank you to Joe Stout for his expertise in videography for the meeting.



Set up and Clean up:

Thanks to our trusty set-up and clean-up crews for making things happen.

The meeting adjourned at 9:20p.m.
Steve Drake, Secretary

Bring-Back Challenge (Gary Guenther)

It's nice to have a woodturned item in your collection from one of your friends.

Each month, we raffle off a piece by a Member, to be won by another lucky Member, and the winner's responsibility is to turn a piece of his own and bring it to the next Meeting to have it raffled off, in turn. It's a fun, if random, way for us to trade work amongst ourselves.

For the October Meeting, William Flint donated a rocket turned from maple and cocobolo, with lacewood fins, and also a maple spin top with a maple "spin on top" top that can be spun on top of it, as he has deftly shown us in the past. The tops are "UFOs" to go with the rocket theme. Tina Chisena won the drawing and will bring something back for next month's raffle.



Next month, Tina will bring back something to raffle off to the next lucky winner. Be sure to get a raffle ticket at the November Meeting and join in the fun.

Last Month's Program (John Laffan)

Bowl from a Board by Joe Kramer

October's demonstration featured Joe Kramer showing us various ways to make a bowl from a board. Joe has been a lifelong woodworker who has only recently begun turning. He is a member of Chesapeake Woodturners in Annapolis. While Joe enjoys many forms of woodturning, he is particularly interested with segmented woodturning, as well as making bowls from boards. His unique and interesting approach to combining these skills has elevated this bowl technique into one that leads to a unique, multi-dimensional art form creating truly striking bowls.

Joe brought with him many stunning examples of his unique bowls, all of which were made with the bowl-from-a-board method. The variety of his displayed bowls revealed the versatility of his technique.



While the method is called “bowl from a board”, for practicality in using standard lumber, Joe usually starts out with 2 boards of the same size and thickness, each half as wide as it is long. By clamping these boards side by side you create a square. You find the center of this square and, with a compass, draw the largest circle you can. For a 45-degree side-angle bowl, step in the thickness of the board (e.g., step in $\frac{3}{4}$ inch for a $\frac{3}{4}$ -inch thick board) and draw another concentric circle. Repeat until the innermost circle is the size you want for your bowl base (Joe suggests 3-4 inches). You now need to cut out these circles. Joe mentioned three methods:

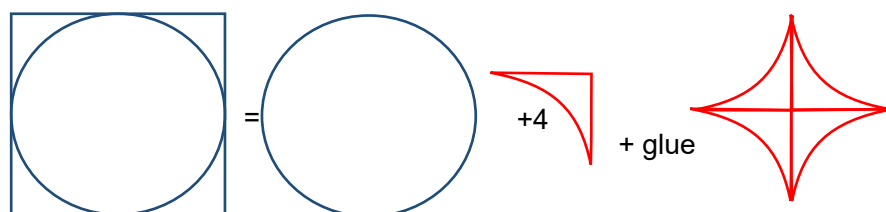
1. Cut with a band saw (unclamp the boards and cut each of the two original boards separately). Joe uses a $\frac{3}{8}$ -inch carbide-tipped blade.
2. Cut with a parting tool on the lathe (after gluing the sides together and mounting on a scrap piece of wood piece with a tenon or faceplate).

(Continued on page 14)

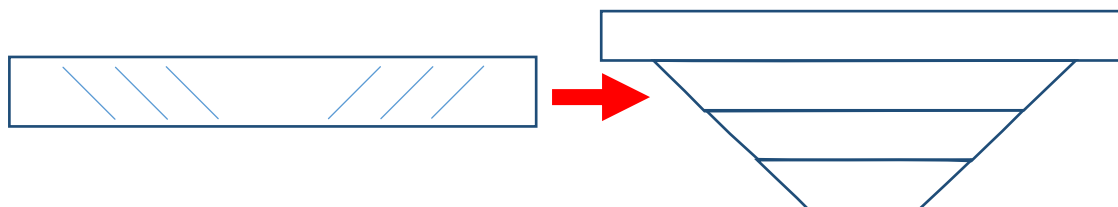
(Continued from page 13)

3. Cut with a scroll saw. This involves drilling a small hole on each concentric circle at the cutting angle (45 degrees here), then inserting the scroll saw blade and cutting that circle while holding the cutting angle. This is Joe's least favorite method as he feels it is tedious but it does have the advantage that you can cut boards that cannot be separated as required for the band saw, and it creates a significantly narrower kerf than a parting tool.

Joe suggests cutting the outermost circle at a 90-degree angle as this gives the possibility of a lip on the top of the bowl (which can be turned off later, if it is not desired). This creates four corners which can be glued together to create a usable piece of wood, one that is useful for a base or other embellishment for your bowl (Joe hates to waste wood).



For a typical 45-degree side angle bowl, the inner rings need to be cut at 45 degrees. Band saw tables (and scroll saw tables) usually have the ability to tilt this much, making the cuts fairly simple. At the end, you will have the round base and a number of concentric rings that can be stacked to create your rough bowl form with very little waste.



The band saw technique here is very forgiving; you can usually fix any sawing issues with the final turning. To glue the band saw cut sides together you can quickly sand the glue faces with a piece of 60-grit sand paper glued to a flat surface (like a sheet of Plexiglas). This same flat sandpaper can be used to prep the top and bottom of the rings for gluing as well.

The way Joe demonstrated cutting the rings was using a parting tool directly on the lathe. This entire process is documented photographically, in great detail, in our October 2016 "Program" web album available for viewing at <https://goo.gl/photos/USy1PLaA4K3es4bZ9>. The photos are in order but will probably remain uncaptioned. You'll be able to follow the action there with the descriptions given here below.

(Continued on page 15)

(Continued from page 14)

Here are two photos showing the unglued, stacked set of rings cut from a single, plain, flat board (such as the one shown uncut under it) and the resulting bowl that can easily be turned from it. This is the essence of the bowl-from-a-board technique, without the added, delightful artistic effects that can be achieved by laminating different woods.



For cutting the rings on the lathe, the glued board is attached to the lathe via a scrap piece of wood or MDF with a chuck tenon or faceplate. The rings can be cut with a thin ($1/16"$ or less) parting tool. Joe used a "stock" thin parting tool, but he talked about how a thinner parting tool (made from a butter knife or a planer blade or hacksaw blade) would do the job better. The parting tool angle is aligned by eye. He uses a framing square set nearby to give him a 45-degree reference; triangles with other angles could also be used as visual references. The rings are cut as

marked on the board, starting from the outermost and working inward. Each ring is removed as it is released, by stopping the lathe and removing the tailstock, as it will not fit over the remaining board the other way.



(Continued on page 16)

(Continued from page 15)

The rings can then be assembled on the lathe (or in a press). The bottom piece is glued to an optional foot (made from the reclaimed corners). That is attached to a waste piece of wood with a tenon to attach to the chuck. On the other side, a jig is made from MDF (medium density fiberboard). A large circle of MDF is attached to a scrap piece of wood with a tenon or face-plate. Small, shallow, indentation cuts are made in concentric circles on the MDF with a parting tool, then emphasized with pencil marks. The cuts should be approximately ½ inch apart but it is not critical they are simply a visual aid to help align the rings onto the bowl bottom. The next ring is centered on the MDF jig (using the handy circles) and taped into place. The MDF with the rings is then aligned on your tailstock using a pin hole in the exact center of the back of the MDF jig. The edge is glued, and the tail stock can now be used to press the ring onto the base assembly (wiggle it a little to help seat the ring). After a few minutes the glue has tacked up enough to put on the next ring in the same way. When all the rings have been added, let the entire glued-up assembly dry at least 2 hours (but overnight is better).



The bowl blank can now be turned, outside and inside, to smooth over the irregularities and to achieve the desired wall thickness (but measure carefully first – you already don't have a lot of thickness to spare!). Joe suggests leaving the MDF jig in place to stabilize the blank as you turn the outside; then remove it to turn the inside of the bowl.



He finishes this part of the bowl -- usually sanding up to 220 grit and using Liberon finishing oil (but you can use any finish of choice). The bowl is then flipped into a Cole jaw chuck to complete shaping and finishing the bottom of the bowl. Joe sets the maximum size for the initial circle as the maximum size that will fit in his Cole jaw chuck.

(Continued on page 17)

(Continued from page 16)

If you use 7/8-inch or thicker stock for your starting boards, the walls will be thicker, and you will have some leeway in turning, giving you the possibility of some curvature to the sides rather than being limited to the straight sides you get with narrower thickness of starting boards. With careful planning, you can create sides with different angles, other than 45°.



This is the basic technique for a “simple” bowl from a board, but Joe uses several other tricks to create his uniquely artistic bowl designs. One technique is to make the original board from scraps of many different types of wood put together rather randomly. This creates a very interesting effect. Another approach is to use two or more different colored woods to create the initial boards. The rings can either be aligned to line up the grain, or the rings can be rotated to

create swirls or checker-board patterns. An extremely swirled pattern can be made by creating an initial board by gluing together varying colored wood strips, which are then resawn on the band saw to create very thin boards (1/4 inch in the demo, but you could go even thinner). The boards are glued to create a square, and cut into the largest possible circle. The circles are glued in a stack with each circle offset angularly by a consistent amount from the circle below it. A small offset will give a gentle swirl in the bowl, while a larger offset will create some truly dizzying effects.



The glued stack of 3 or 4 circles is used as the initial board and taken through the process described above -- being careful to maintain the same offset



(Continued on page 18)

(Continued from page 17)

when gluing the rings together on the lathe. The method for the swirled bowl is timely as it is the cover article for the current issue of the AAW member publication *American Woodturner* (October 2016, Vol. 31, #5, pp 28-32).



As an aside, another visually stunning technique Joe has used is to attach two different colored wood boards together with a sliding dovetail. He emphasized that the dovetail should be very tight, and to cut it very carefully, sneaking up on the final fit with extremely fine cuts. Any gaps are very evident in the final bowl. The other thing to be aware of here is that the center is now not at the line between the colored boards but in half the depth of the dovetail on the side with the cut recess. Align the rings carefully, and the dovetails show beautifully after turning. Wow. It produces a result that looks impossible! What a great idea.



Overall, Joe's evening program for MCW was a great success. The basic technique was novel to many of our members, and Joe showed us how versatile it is in creating so many different types of beautiful bowls. We thank Joe for his entertaining and informative program.

Show, Tell & Ask (Bill Long)

Name	Description	Wd.	Ht.	Ln.	Wood(s) Used
Richard Webster	natural-edge bowl	10	6		ash
Jim Allison	cherry bowl	9	5.25		cherry
Jim Allison	bowl	6	2.25		hickory
Jim Allison	small bowl	6.5	1.5		ambrosia maple
Jim Allison	flat bowl	5.5	1.5		box elder
Jim Allison	bowl	6.5	3		ambrosia maple
Jim Allison	candlestick pair	2	10.5	8	cherry
John Laffan	leaf bowl w/ neut	8	2.25		box elder
Roman Steichen	12 pens for TFT				wood w/ resin
Roman Steichen	pine cone pen & phone stand				
Roman Steichen	pine cone blanks				
Roman Steichen	maple and resin blanks				
Elliot Feldman	"Mother-in-law" rolling pin	11	3		maple
Paul Wodiska	small bowl	4	6		maple
Clif Poodry	Art "Inner Self"	9	9		maple
Clif Poodry	Art "Three Lives"*	13			redwood
Bob Grudburg	bowl	8	10		walnut
Bob Grudburg	bowl	4	6		mix
Bob Grudburg	bowl	6	8		walnut
Rebecca Meyerson	maple "Fair" bowl	2.25	4.63		maple
Rebecca Meyerson	maple "Fair" bowl	1.38	4		maple
Bob Browning	dish	1	4.5		curly koa
Bob Browning	bowl	7	4		curly koa
Phil Brown	Bowl, woodburned in collab. w/ C. Hurwitch	3	13.25		pear

Continued on next page

Name	Description	Wd.	Ht.	Ln.	Wood(s) Used
Phil Brown	natural-edge bowl	5.25	9.25	6.75	box elder
Duane Schmidt	hollow form	4	3		chestnut oak
Joe Barnard	table				sycamore / walnut
Joe Barnard	box				walnut
Joe Barnard	bowl				black locust
Jeff Tate	Christmas ornaments				maple & oak
Jeff Tate	rattles				hard maple
Jeff Tate	candlesticks				African blackwood, myrtle burl, oak

* From Clif's description of this piece:

"I once stood tall with a stately name 'Sequoia sempervirens'.

A slab was cut from my charred stump and coated with shiny plastic to make a coffee table.

A recycled piece from that table, still with scars of my life, became a modest bowl, a bowl of memory and reflection."

VIDEO VIEW – Instructional Video of the Month (Gary Guenther)

Free, online woodturning demonstrations for your viewing pleasure

AAW Video Source: Flick of the Week and a Bonus Video

This week's featured video from AAW is a demonstration of the application of multi-axis spindle turning, by our good friend Barbara Dill, to create the outside form of a 3-sided goblet. She doesn't bore us with the hollowing. The (24:28) video was made by Frank Jessup at a CAW workshop. https://www.youtube.com/watch?v=JK1EvP_NCI0



As a bonus, AAW also provides us with a video by Al Hockenbery, whom many of us know from his days in Annapolis, to show us how to make a bark-edge bowl from a crotch. The demonstration, which runs an hour (1:01:56), has lots of tips and techniques that can be used for bowls of all types. Al has always been a great teacher. <https://www.youtube.com/watch?v=8jVol12Kfug>

As a bonus *Click It* within this Video View, check out Al's gallery from a few years ago when he was a member of Chesapeake Woodturners, before he and Sherry moved to Florida: <http://hockenberywoodturning.com/photoalbums/Chesapeake%20DEMO%20SLIDE%20SHOW/index.html>.

CLICK IT – Web Site of the Month (Gary Guenther)

A recommendation of a web site link I believe to be worth your viewing time:

Cumberland Woodturners is an active AAW Chapter, nearly 20 years old, based in central Tennessee, about halfway between Knoxville and Nashville. Their web site includes a page with links to a large number (70) of documents describing how to do various interesting projects, including tools and tips. These are old-fashioned presentations of words and pictures, not videos. I'm not going to list all the projects here – you can click the link and look for yourselves. www.cumberlandwoodturners.com/tips--links-and-projects.html

Take a look. I'm sure you'll find something interesting.

MCW Resources (Gary Guenther)

MCW Hands-on Mentoring Program

Hands-on mentoring is one of the most effective ways of learning turning techniques, tool use, and safety. We all have unique knowledge and ideas to impart. We encourage all Members to sign up to share a few hours of their time and knowledge at the lathe with each other, on a peer-to-peer basis, either in their homes or at Skills Enhancement sessions. We particularly encourage our new Members and beginners to use this opportunity to learn techniques and safety. Please let Gary Guenther know if you would like to participate.

Skills Enhancement: Once a month, we have an open lathe session at WWC, alternating on the Fridays and Sundays after the Meetings, under the guidance of Matt Radtke and Eliot Feldman. Please check the Newsletter and Web Site Calendars for monthly dates and reserve a limited slot with Matt. Everyone shares skills and information, and it's lots of fun.

"Freewood" email list: Free wood (a.k.a. "road kill" or "found wood") is often available in neighborhoods around the County. Webmaster Carl Powell has created a "freewood" email list to permit list members to broadcast the location of found wood in a timely manner. This is an opt-in Program. If you would like to join, please contact Carl Powell. If you are a list member, you may post a descriptive email to all other list members by sending an email to freewood@montgomerycountywoodturners.org. Please describe the location, type(s) and sizes of wood, and any contact information, requirements, restrictions, and limitations.

MCW Facebook Group: President Ellen Davis has created a new Facebook Group just for MCW Members. The idea behind this is to allow you to post pictures of your work (gives others inspiration), ask questions that our members can answer, and provide another venue for our members to get to know each other better. She is a member of several other woodturning groups via Facebook and has had great feedback from the work she posted and has received invaluable help when she asks questions. For our MCW Facebook Group, please click the following link <https://www.facebook.com/groups/194941367515051/> and request to be added to the group. If you do not have a Facebook account and want one, please contact Ellen. We have over 40 Members involved.

MCW Lending Library: Now Free! Books and DVDs are available for borrowing. We have a good selection of video demonstrations and instructional materials from many top professional turners. If you missed a Meeting and would like to see the Program, you can check out the DVD. Please sign the form to check them out from John Laffan. If you have titles out, please return them promptly. There is no charge for this service.

(Continued on page 23)

Silent Auction: Not everyone has access to a chainsaw or a band saw, which makes it nice to have access to reasonably-priced, properly-sized turning blanks. Thanks to the generosity of Phil Brown and other Members, our Silent Auction provides this benefit at every Meeting. Please bring your 'road kill' to share with other Members.

Discounts: Steve Drake has assembled a selection of retailers who provide MCW Members with monetary discounts. First and foremost, of course, is the Woodworkers Club, but we have a number of others too. Please check out the list of participating merchants on the Web Site or at the end of each Newsletter.

Web Site: <http://montgomerycountywoodturners.org> Thanks to Webmaster Carl Powell, we have an outstanding Web Site. It has current information on meetings and activities, and is loaded with articles on practical *Tips* ("YMMV") and *Safety* and *Handouts* from previous Demonstrators, as well as links to over 350 captioned *Photo Albums* from all of our Meetings, and all our Newsletters, back to our founding in 2007.

Newsletters: Thanks to new Newsletter Editor Stephen Price, all Members receive the 2016 AAW *Best Chapter Newsletter* www.woodturner.org/?page=ChapterWinners by email every month. Further, the MCW Newsletter Archive, accessible from our Web Site tab, is a tremendous resource, containing the complete history of all MCW programs and activities from day one, as seen on a monthly basis through the years. All past issues back to Volume 1, Issue 1 in 2007 are available at <http://montgomerycountywoodturners.org/Newsletters.html>

Our Hosts: Our most important resource is our space. We are deeply indebted to our hosts, the Woodworkers Club, for their continuing support in sharing their facility with us as we move into our tenth year. Please give Amy, Chris, Matt, and Ralph your individual expressions of appreciation, both verbally and with your wallets. If you need something, they will get it for you, either off the shelves or from the catalog – with no shipping charge.

Treasury Report (Phil Brown)

Income Items			Expense Items		
	September Income:			September Expenses	
	Membership	\$25		Demonstrator	\$130
	Total income	\$25		Total expenses	\$130
	Total funds available	\$4669.04			

Member Discounts (Steve Drake)

Woodworkers Club Rockville, Maryland – woodworkersclub.com. The Woodworkers Club, a Woodcraft affiliate, offers MCW Members a 10% rebate on all regularly priced items. After reaching certain plateaus of spending, you will become eligible for a rebate which you will receive by email and is good for 3 months. Non-qualifying items are power tools, items already on sale, gift cards, and items from companies that prohibit discounting (Festool, SawStop, Leigh, and a couple others). Our relationship with Woodworkers Club is very synergistic and important to us, and I encourage you to make your woodturning and woodworking purchases from them. If they don't have something in the store that's in the Woodcraft catalog or on their web site, they will get it for you, and you can save on shipping by picking it up at the store.



Exotic lumber, Inc. Frederick, Maryland – exoticlumberinc.com. With over 130 species in stock, Exotic Lumber has one of the widest selections available on the East Coast. We offer a 10% discount to MCW Members with membership badge. We have warehouse locations in Frederick and Annapolis, where you are welcome to select from our extensive selection of turning blocks.



2Sand.com – 2sand.com is a coated abrasive specialist focused on fast service and fair prices providing superior sanding discs, sheets and belts. MCW Member receive a 5% discount (cash or check) at the Gaithersburg store at 8536 Dakota Drive (800-516-7621).



Craft Supplies USA (www.woodturnerscatalog.com) is a family-owned and operated business serving the woodturning community. Individual MCW Members can save 10% on all finishes & disc abrasives -- just mention "Montgomery County Woodturners" and save, all year long.



CRAFT SUPPLIES USA
THE WOODTURNERS CATALOG
woodturnerscatalog.com • 1-800-551-8876

Hartville Tool (www.hartvilletool.com) is a nationwide retailer of general and specialized tools for woodworking and home improvement. They offer free shipping to all. If you have accepted the MCW offer to "opt in" to be a member of the Hartville Tool Club, you will get a 15% discount on all tools (excluding sale items, gift cards, special orders, and Festool Products). If ordering online or by phone, mention your Hartville Tool Club membership in the "checkout notes". (The discount will be applied manually when the order is processed for shipment, not at



(Continued from page 24)

the time of order. The discount will not show on your e-receipt, but it will show on the packing slip that comes with your order.)

North Woods Figured Wood (www.nwfiguredwoods.com)

North Woods is a multi-generational family-owned supplier of wood and wood blanks specifically selected with the woodturner in mind. They specialize in Pacific Coast native species of trees and have sizes from single pen blanks up to 1,500 lb. whole burls. With 20+ species in stock, there is something for everyone. Members get a 15% discount by mentioning their MCW membership during a phone order or by entering "WOODTURNERS" as a coupon code during online ordering.



AAW Focus (Gary Guenther)



Dear Fellow Woodturner:

The AAW has a strategic plan, called Vision 2020, which is focused on improving the AAW's services, programs, and resources.

An important first step in this process is to learn about the people involved in woodturning –you. More specifically, **we'd like to ask you to complete an online survey** to help us understand why you turn, how you develop your woodturning skills, and how you view your chapter and the AAW.

Important Notes

- The survey will be open until **November 14**, but we encourage you to complete it as soon as possible.
- No personal information will be collected or used as part of the survey process.

If you complete the survey, you will have an opportunity to download AAW's **"Turners for Tops"** booklet free in appreciation of your time. A link to the digital booklet will be available on the final "Thank you" screen immediately following your survey submission.

Take the online survey here: <https://www.surveymonkey.com/r/GQ5GJY2>

Thank you so much for helping us to improve how your chapter and the AAW serve you.

Regards,

Linda Ferber, AAW Vision2020 Recruit New Members Project Team Lead

Chapter Contacts - Volunteers (Gary Guenther)

Position	Member
<i>Wounded Warrior Support</i> Program Director	Don Van Ryk
<i>Skills Enhancement</i> Program Director	Matt Radtke, Eliot Feldman assistant
Public Library Exhibit Committee	Phil Brown, Russ Iler, Mary Beardsley, Jeff Tate
<i>Turning for Tomorrow</i> Program Director	Bob Anderson
<i>Beads of Courage</i> Program Director	Jeff Tate
<i>Turning Works</i> Program Director	Jack Enders
Montgomery County Ag Fair Program Director	Tim Aley
<i>Turn for Troops</i> Project Leader	Matt Radtke
Backup Secretary	open
Lending Librarian	John Laffan, Joe Barnard backup
Videography	Joe Stout, Bert Bleckwenn, Matt Radtke (need 1)
Gallery Photography and recording	Mike Colella, Jeff Tate, Tim Aley
Candid Photography	Tim Aley, Gary Guenther, Jeff Tate
Web Albums	Gary Guenther, Tim Aley, Jeff Tate, Mike Colella
<i>Show Tell & Ask</i> Leaders	Mike Colella, Matt Radtke, Clif Poodry
<i>Show Tell & Ask</i> Recording and Trucking	Richard Webster and Jim Allison
Demo Fee Collection	Bob Grudberg
Setup Committee	Jim Allison, Margaret Follas
Clean-Up Committee	Paul Simon
Discount Deacon	Steve Drake
Brochure Boss	Phil Brown
Brochure Boss	Phil Brown

Chapter Contacts - Officers (Gary Guenther)

President	Ellen Davis	ellen@twistedtreedesign.com	301-728-5505
President Emeritus	Gary Guenther	gary.c.guenther@gmail.com	301-384-7594
Vice President	Bob Anderson	robert.anderson4@verizon.net	301-270-6005
Program Chair	Tim Aley	taley16922@aol.com	301-869-6983
Secretary	Steve Drake	skdjmbd@gmail.com	301-208-8265
Treasurer	Phil Brown	philbrown@comcast.net	301-767-9863
Membership Chair	Jim Allison	jim-elaine@allison.net	301-706-6164
Newsletter Editor	Bill Long	bpra@earthlink.net	301-530-5626
Webmaster	Carl Powell	cmepowell@gmail.com	301-924-6623

Future Meetings Schedule (Tim Aley)

Date	Demonstrator	Program
11/10/16	Tim Moore	Natural birdhouse ornament
12/08/16	Pot Luck and finishing	Members on finishing
01/12/17	January Critique	

Skills Enhancement Schedule (Matt Radtke)

Session Date	WeekDay	Session Date	WeekDay
11/13/16	Sunday		

Wounded Warrior Program Schedule (Don Van Ryk)

Session Date	WeekDay	Session Date	WeekDay
12/9/16	Friday		

Tailstock (Gary Guenther)

ST&A "Gallery" Album Cover shot for October

Clif Poodry made the two matching pieces of this composition from one piece of heavily-spalted maple. What a great idea! He was going to enter it in our exhibit at the Washington ArtWorks, but that was unfortunately cancelled. So he brought it to our Show Tell & Ask session instead. Winner!



"Inner Self" by Clif Poodry – spalted maple sphere and matching bowl

Please enjoy viewing the entire October 2016 ST&A Gallery at
<https://goo.gl/photos/xhs9iuoLzAYwqSq1A>