



MEETING AGENDA

6:30-7:00 - Set-up, Check in Show & Tell
 Silent Auction, Shop
 7:00-7:30 - Business meeting
 7:30-7:50 - Show, Tell & Ask
 8:00-9:20 - Program
 9:00-9:45 - Clean up, Claim & pay for
 auction items

Meeting Location

WOODWORKERS CLUB
 11910-L PARKLAWN DR
 ROCKVILLE, MD 20852
 301-984-9033

**REMEMBER TO PARK IN
 BACK**

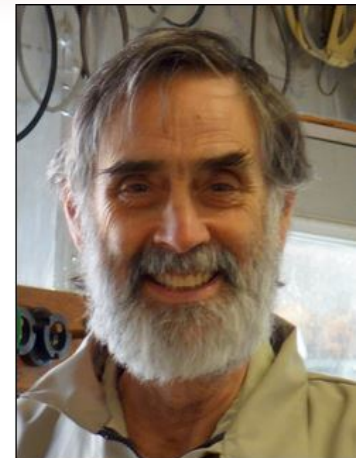
August 9 Program Joe Dickey – Turning a Sphere

Contents

Evening Program	1
Presidents Message	3
Meeting Minutes for 3/9/2017	4
Exhibits	6
Direct links to photos	7
Bring Back Challenge	7
Back To Basics	8
Skills Enhancement	9
Library exhibit pics	9
Last month's program	10
Show, Tell and Ask	11
Websites of the month	18
Turn for Troops	19
MCW videos	20
Speaker Schedule	20
Member Contacts	21
MCW Resources	22
Member Discounts	23
Tailstock	24

Joe Dickey is a valued friend of MCW. He has demonstrated for us twice in the past, and he has also served as a Critique Panelist twice, in 2016 and 2018.

Joe is a local Renaissance Man --



physicist, banjo player, wood artist, arborist (he grows chestnut trees), and organizer. He happens to be one of nine current Directors of AAW, and the AAW Treasurer. I'm sure

he would appreciate your vote in the election going on right now. Joe was nominated for a 2014 Arts and Crafts Design Award -- an international, annual competition for nominated artisans, craftspeople, and designers – for which the primary aim is “to honor and support the best ideas and concepts and recognize their excellent realization”. He has taught woodturning design at the John C. Campbell School in NC and has had solo shows of his wood art at the Watergate Gallery in Washington, DC.



You can meet Joe and see what he does by watching a 9-minute video on “From Tree to Art” on his web site at www.joedickey.com/wood-art.html. Joe has been a professional and nationally recognized woodturner since 1984, specializing in vessels and hollow forms. He has works in many private and public collections. He helped establish and administer the Woodturning School and Co-op at Maryland Hall for the Creative Arts in

Annapolis, MD. He is a founding member of the Chesapeake Woodturners in Annapolis. He is also a past President of the Board of the Maryland Federation of Art, which operates a gallery at 18 State Circle in Annapolis. You can see more of his wood art and other endeavors on his website. He loves online visitors interested in any of his activities.

For his August Program, Joe will make chips fly while showing us *his* technique (there are many) for turning spheres – a very useful and important talent. Please join us.



President's Perspective

by Ellen Davis

I place of a message for this month, one final note on our dear friend.

In Memory of Phil Brown: The Phil F. Brown Fund

At the Center for Art in Wood

Phil and Barbara put a lot of love into their support for the Windgate ITE program over the years. If you're not familiar with it, you can learn more about it here:

<https://centerforartinwood.org/windgate-ite-international-residency/> and here:

<https://centerforartinwood.org/windgate-ite-international-residency/support-the-windgate-international-ite-residency-program/>

Needless to say, it is a very successful and worthy endeavor.

As per Phil's wish...

The Phil F. Brown Fund has been established to support an effort that Phil was leading at The Center for Art in Wood, in conjunction with its annual Windgate ITE International Residency Program.

Phil Brown was a self-taught artist and craftsman, as well as an advocate and community builder for the field of art in wood. Though he had been drawn to woodworking from the time of his youth, he began turning at the age of 38, with a newly purchased lathe and a book to guide him. Phil became known for his fine bowl forms, which were turned from wood sourced from felled trees local to his home in the DC area. He was a great friend to The Center for Art in Wood, serving on its Board of Trustees and participating in some of the organization's earliest exhibitions and symposia; a bowl from tulip poplar was shown in the seminal International Turned Objects Show (ITOS) in 1988.

Phil was pleased to have been able to set up this fund before his passing. He will be greatly missed.

To donate to The Phil F. Brown Fund click [HERE](#).

If you wish to make a donation in Phil's memory, this is where and how to do it.

We miss you, Phil.



MCW May 10, 2018 Meeting Agenda

Start Time: 7:00pm ~ Approximately 44 members attending

Introduction:

Name tags: please wear them so members get to put a face with a name. If you do not have a permanent one, order forms can be found on the table. Talk to somebody you don't know.

Silent Auction: Please bring, but remember, if it doesn't sell, you have to take it back home with you.

Welcome Guests: Louise and Margaret Madden

Bring-back Challenge Program: Tom Ankrum won previously. Mike Colella picked the winning number this month, congratulations!

MCW Membership: Dues for 2018; \$25 for an individual and \$35 for a family membership! See Jim Allison for more information.

New Business:

As you all know by now our Founding Member Phil Brown passed away on July 14, 2018. His memorial service will be held on Sat. September 29th at 3:00pm at the Cedar Lane Unitarian Universalist Church located at 9601 Cedar Lane, Bethesda, MD 20814 www.cedarlane.org

The Phil F. Brown Fund has been established to help support The Center for Art in Wood (www.centerforartinwood) in Philadelphia, PA. If you would (yes I spelled that incorrectly on purpose) like to make a donation in Phil's memory his family and the center would be appreciative. More information on where to make that donation will be released soon.

An additional program to honor Phil will be added to close out our Tri-Club Show (see below) on Sunday, Sept 30th.

Vessels From Our Trees: Popcorn Gallery at Glen Echo Park, Bethesda, MD: Tri-Club Show with MCW, Chesapeake & Mid-Maryland. This is a juried exhibition and was conceived and initiated by Phil Brown.

To Participate please contact Tim Aley at taley16922@aol.com

Fees: \$10 per submission up to a maximum of three (3) submissions per artist. Fees are payable to MCW.

Submission Deadline: August 24, 2018

Exhibition Installation: August 28 – August 31, 2018

Show Dates: September 1 – September 30, 2018.

Additional Member and other club Member's news:

Roman Steichen's mother passed away on July 17th

Dave Swiger, President of Mid-Maryland Woodturners suffered a stroke also last week. Please note that Mid-Maryland is part of our Tri-Club show.

The Montgomery County Agricultural Fair is coming up, and there were still a few spots open to turn at the fair. Contact Tim Aley for more information.

WE NEED VOLUNTEERS & BOWL SUBMISSIONS for the Vessels From Our Trees Show. As you can tell this show is very important to many people, let's make this happen for everyone.

Program News:

Wounded Warriors Program: Sessions are now on Fridays at 12:30 p.m. Please plan on helping out for this important cause. Don will send emails to announce sessions. The next session is scheduled for **Friday, July 20th**. Contact Don for more information at dvanryk@aol.com

Public Library Exhibits: Next month is our Library Exhibit is at Quince Orchard Library. Contact Joe Barnard at barnards@wood-crafted.com with any questions.

Turn for Troops: To date we have 156 pens turned and 59 pen kits out and waiting for their return. Contact Roman Steichen for more information on how you can help in 2018. For July's meeting please give all pens that have been turned to Ellen. If you need pen kits please let her know.

Beads of Courage: Steve Haddix is heading up our 2018 effort to help John's Hopkins Children's Oncology Dept with Beads of Courage lidded bowls.

Turning Works: Bowls are donated to help MoCo Charities. Interested in participating contact Ellen directly at Ellen@TwistedTreeDesign.com

MCW's Website: Contact Jeff Struewing at jeff@struewing.us if you have any questions or updates

Facebook: MCW's Facebook page is a private/closed group for our members. The link is <https://www.facebook.com/groups/194941367515051/> then request to be added to the group.

Activities News:

Mid Atlantic Woodturning Symposium, Lancaster, PA from September 28 – September 30, 2018. Check out <http://www.mawts.com>

2018 Virginia Woodturning Symposium, Fishersville, VA from November 3 – November 4, 2018. Check out <http://viriniawoodturners.com>

Education:

MCW Video and Book Library: John Laffan is our librarian. Our books and DVDs are now free to borrow. Please sign them out and sign them back in.

Future Meeting Programs: Next meeting is on Thursday August 9, 2018 – Tips, Jigs & Tricks MCW Members

Show, Tell & Ask : Mike Colella

Evening Demonstration Program: Pete Madden – Geometry Inspired Woodturning & Our Annual Ice Cream Social

Ever look at a geometry inspired turned form and wonder how in the world they did that? At our July demo, you'll hear Chesapeake Woodturner Pete Madden explain the wizardry behind these amazing shapes. Pete blends his love for turning with his advanced degrees in physics and mechanical engineering to create inspiring works of art.

Artist Background

Pete has been working with wood for 40+ years but started turning wood in 1985 when he bought a Sears lathe and started spindle turning table legs for furniture that he had made. Pete began bowl turning in 2010 when he attended basic and advanced courses given by Joe Dickey at Maryland Hall. Shortly thereafter, he bought a Jet 1222vs lathe that he continues to use.

Like many of us, Pete tends to make "one offs", he started with the mathematical forms after seeing the work of Michael Forster in the American Woodturner magazine in 2014. Pete tends to turn for his own enjoyment, but he has entered work in a few shows and enjoys demonstrating turning at woodworking shows.

Demo Outline:

Lathe vibrations - what cause it and how to control it.
 Applying shape and thickness
 Catenoid and Sinc X
 Off axis turning
 Costa minimal surface
 Lathe demo showing how to make off-axis holes
 Mathematical generation bowl shapes
 Parabaloid and sphere combinations
 Off-setting features
 Questions and wrap up



Glen Echo Park Exhibit and Other Future Exhibits - by Phil Brown

We have a tri-chapter exhibit scheduled for the Popcorn Gallery, Glen Echo Park, from September 1 to 30 this year. On-site jurying of the pieces by Jane and Arthur Mason, will likely occur August 27th, with installation to follow during that week. The other two participating chapters are Chesapeake Woodturners and Mid-Maryland Woodturners, the same chapters we collaborated with for the BlackRock exhibition in Germantown. Their participation includes lending pedestals together with mine. Pedestals are a key resource for exhibiting turned wood.

Jane and Arthur Mason live in Washington DC, and began collecting turned wood in 1986, after viewing the Jacobson Collection at the Renwick Gallery. They have collected over 900 pieces and gifted over 200 of those to museums since then. Over the years, they critiqued several instant galleries and participated in annual symposium presentations of the American Association of Woodturners, which conferred *Honorary Lifetime Membership* to them in 2005. They are quite pleased to be asked to jury our exhibition and keep their hand in our woodturning world.

The exhibition application will be on paper, not digital, and the Masons will view and handle your submitted pieces. September is an ideal month for the Glen Echo exhibit, since the Labor Day Art Show (you can submit work for it too) will occur in the Spanish Ballroom, and it draws a lot of people to the Park. Our exhibit should be an excellent marketing opportunity for lower and medium-priced quality work. Our exhibit will come down Monday October 1st, and in addition to that day, your unsold work will be available at the MCW October 11th meeting. Additional details and the application will be available in coming months.

Fair in August 2018

MCW demonstrates turning in a booth at the Montgomery County Fair in Gaithersburg. We have a show and tell table for the public, but we can't sell our work in that booth. It's nice to know there are usually turned pieces in the Arts and Crafts building nearby, and to send people to see the pieces. It seems particularly unfortunate to be turning outside, and not have our turned work inside that building. This display is not juried, and overall would be considered a low-quality exhibition even when the turned work is good. It can be fun to participate, and that gets you into the Arts and Crafts building on your demonstration day. They give many awards, and participating creates another entry for a resume.

CCC in 2019

MCW, together with Capital Area Woodturners, is a participating member of the Creative Crafts Council, which holds a 2019 spring multimedia exhibition at Strathmore Mansion in Rockville. Jurors will be looking at digitally submitted photographs, probably in February 2019. So, design, photograph, and submit quality work which will wow the jurors. Later this year, see creativecommons.org

BlackRock in 2020

Ann Burton, Gallery Director at BlackRock Center for the Arts, really liked our January-February exhibition and the enthusiastic public response to it. She wants to repeat it in 2020, with some minor date changes from this year. I endorse this opportunity and again look forward to it. The 2017 digital application, with only minor modification, will again be used in late 2019. Whether you are new or an experienced woodturner, keep these exhibit opportunities in mind

DIRECT LINKS TO ONLINE PHOTOS - (For your viewing pleasure)

Web Photo Album Links for August 2018 MCW Turning Journal

MCW July '18 Gallery: <https://photos.app.goo.gl/Qtj1QEggr9uw5Wc76>

MCW July '18 Meeting: <https://photos.app.goo.gl/2QnsmHj149niYSKo8>

MCW July '18 Program: <https://photos.app.goo.gl/w8DESBa3N9BC3dXQ9>

MCW August '18 Quince Orchard Public Library: <https://photos.app.goo.gl/r2ZTASvLYxT5Uorh6>

Bring-back Challenge (Gary Guenther)

It's nice to have a woodturned item in your collection from one of your friends. —

Each month, we raffle off a piece by a Member, and the winner's responsibility is to turn a piece of their own and bring it back to the next Meeting to have it raffled off, in turn. It's a fun, if random, way for us to trade our work.



In our July 2018 Meeting, Tom Ankrum's bark-edged vase was won by Mike Colella, seen here accepting the piece from Tom.

Next month, Mike will bring something to raffle off to the next lucky winner. You too can join in the fun. Just say "yes" to a Bring Back ticket at the August meeting.



We also had a bonus freebie thanks to Clif Poodry. In honor of Phil Brown, Clif turned a small, walnut box with a lid sporting a "Philial" – a finial in the shape of one of Phil's signature flare bowls. It was happily won by Benji Omisore.



BACK TO BASICS by Gary Guenther

Back to Basics – Stuart Batty Videos (Gary Guenther)

One of MCW's prime directives is education. We have inexperienced turners who can use some guidance, and even experienced turners can benefit from an occasional refresher.

Stuart Batty is known as one of our preeminent woodturning educators, and his reputation is well earned. Stuart learned production turning as an apprentice to his father, and he knows what he's doing. Stuart has made a number of short, educational videos that address a number of basic and important topics, under the title "Seven Fundamentals". They are available via Vimeo. But there are a lot more than seven videos -- I have collected links to 27! Honestly, it's not easy to find them in any sensible order, but I've done the sorting task for you and will present them in coming issues of our Turning Journal in a planned sequence. This is the sixth article in the sequence. You can find the first five in previous editions of the *MCW Turning Journal*.

Last month, we had his Fundamental #3, which is Sharpening. This month we're going to move on to Stuart's forté -- tool use. This is where he shows his mastery, and where we can learn so much from him. I have five videos, and I'm going to give you the first three this month because they're of significant lengths. Stuart shows both what the proper tools are and precisely how to use them.

Drive Centers (19:24)

<https://vimeo.com/68649128>

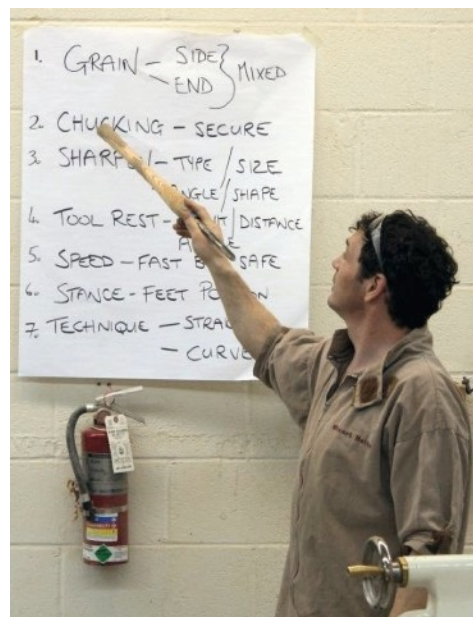
Handle Length, Beads & Coves (13:14)

<https://vimeo.com/68652452>

Handle Length, Overhang & Diameter (15:36)

<https://vimeo.com/68652451>

Next month, I'll do the last two of this group. In the meanwhile, if you wish, you can look ahead yourself at topics of interest, listed randomly here: <https://vimeo.com/woodturning>



Skills Enhancement Schedule Matt Radtke

Skills Enhancement Dates (subject to change). You must contact Matt Radtke at matt.radtke@gmail.com to reserve your spot for Skills Enhancements.

May 10th - Thursday of Meeting date

June 10th - Sunday after meeting

July 12th -Thursday of Meeting date

August 9th - Thursday of Meeting date

September 9th - Sunday after meeting

October 11th - Thursday of Meeting date

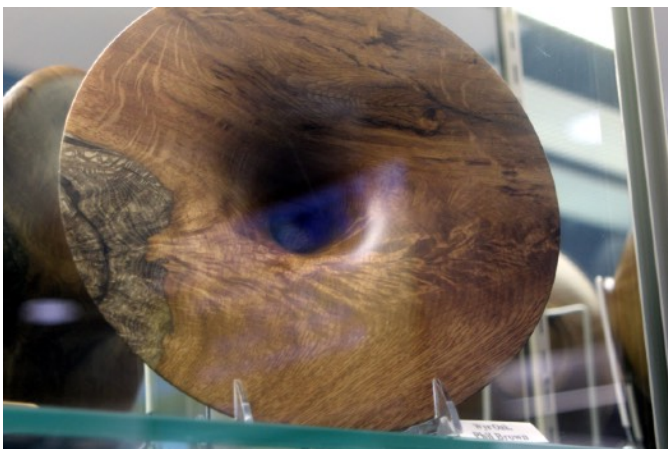
November 8th - Thursday of Meeting date

December 9th - Sunday after meeting



Quince Orchard Library
Exhibit
August 2018

[https://drive.google.com/open?
id=1dyHtjWcwsQOzjTUMqQCSTKoyXJTUbN_W](https://drive.google.com/open?id=1dyHtjWcwsQOzjTUMqQCSTKoyXJTUbN_W)



Last Month's Program (Gary Guenther)

Pete Madden – Turning mathematical forms

At our July Meeting, Pete Madden began by showing us why and how a lathe shakes as a function of mass and speed and that there are two sides to that picture. He then showed us what catenoids are, and the sinc function, and finally, the Costa minimum energy form with four holes in it. Better yet, he showed us how to turn them in wood and what they end up looking like. Cool stuff. If you missed it, or if you would like to review what you saw, Pete shared his set of slides with us for reproduction, and I included live shots, so you can now see it all here:

<https://photos.app.goo.gl/w8DESBa3N9BC3dXQ9> Enjoy!



SHOW, TELL and ASK - July 2018



Tom Ankrum 5.5" x 6" vases [spalted paper birch]



Gary Guenther 1 3/4" x 6" finial'd
hollow form [carob/walnut/dye]
unplanned collaboration between J.
Paul Fennell (hollow form) and Clif
Poodry (finial) with inspiration for
combination by self and for finial color
matching by Steve Haddix

Joe Barnard 6 3/4" x 1 1/4" bowl [catalpa, acrylic
marbleing paint]





Mike Colella 6" x 1 1/2" bowl [tulip poplar]



Mike Colella 6" x 1 1/2" bowl [maple, stabilized with purple dye]

Clif Poodry - Lidded Boxes



Clif Poodry 2" x 4" small box [spalted dogwood]



Clif Poodry 2" x 3" small box [spalted dogwood]



Clif Poodry 2 1/2" x 3" small box with a "Philial" [walnut] [Phil-Brown-inspired bonus Bring Back]





Tim Aley 12" x 3 1/2" bowl [sycamore]



Tim Aley 14" x 4" bowl [red maple]



Tim Aley 4" x 6" bowl [red maple, acrylic marbling paint]



CLICK IT – Web Site of the Month (Gary Guenther)

A recommendation of a web site link I believe to be worth your time:



Here is a great find. It's the link for the online Xylem Gallery. You can treat this as a meta site with galleries of photos of high-end turnings from 24 top turners. This is a drool fest and a great library for you to access for ideas for your future work.

<http://www.xylemgallery.com/artists.htm>

Just click on the thumbnails to bring up the full sets of pieces offered by each wood artist.

And, if you *really* like them, they're for sale!

Three of these turners have demonstrated for MCW, and we're hoping to get a fourth, Jason Breach, next month.

Video View – Instructional Videos of the Month (Gary Guenther)

Free, online woodturning demonstrations for your viewing pleasure

For those of you who follow my recommendations for web sites and videos, you'll be aware that I'm a fan of John Lucas, and I'm a fan of Hunter carbide CUTTING tools. Here is a win-win of John showing how to use the Hunter #5 to undercut rims on bowls, on both the outside and the inside. Try this with a bowl gouge, and you're going to have a hard time. It's a short (4:17) video that may change the way you turn.

<https://www.youtube.com/watch?v=0VP398qXQXc&feature=youtu.be>



Turn for Troops (Roman Steichen)

Turn for Troops

Sorry I missed the last meeting. I'll be there this month with all the blanks I said I'd have last month. Again, I'd rather not bring them back home.

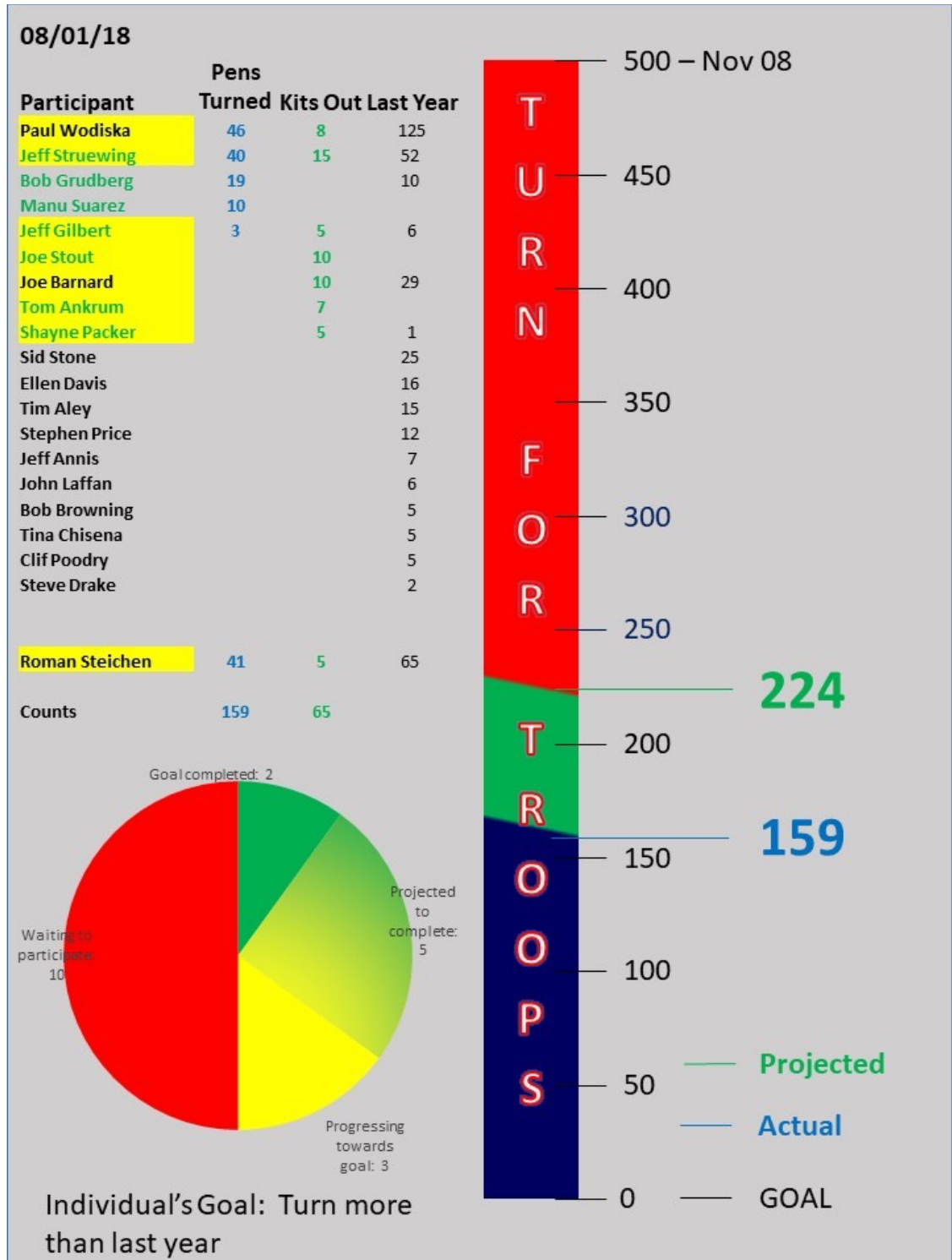
Veteran's Day weekend is quickly approaching. We are running out of time to reach our goal of 500.

I should be at the August meeting to accept pens and give out kits. I will not be there until the end so see me early.

Our goals this year.

1. As a group, turn 500 pens by Veterans Day Weekend.
2. As individuals, turn more pens than you did last year.

Thanks
Roman



Proposed Program Schedule for the rest of the year:

6/7/18 Steve Haddix: Marbling/Hydro-dipping technique,

7/12/2018 Peter Madden: Application of Mathematics to Turning Wood / Ice-cream social

8/9/2018 Joe Dickey

9/6/2018 Jason Breach - TBD

10/11/2018 Michael Kehs

11/8/2018 Joe Dickey?

Joe agreed to demo late in the year, but I need to get him nailed down

12/6/2018 Barbara Dill?

Ellen spoke with Barbara and she is open to doing a demo, we just need to confirm months with her as well



Do check out these great video stories of your club on Youtube:

This one is 1:12 minutes

<https://youtu.be/QYgfvTkQqBM>



This one is 1:00 minute

https://youtu.be/BXRszn_PEWY



If you have 9 minutes this is another version of the video, (MCW starts about 5:30 into video).

<https://youtu.be/CcYeqICZr6k>



Chapter

President	Ellen Davis	ellen@TwistedTreeDesign.com	301-728-5505
Assistant to the President	Tina Chisena	tinachisena@verizon.net	301-933-0676
Vice President	Bob Anderson	Robert.anderson4@verizon.net	301-270-6005
Program Chair	Steve Haddix	sthaddix@gmail.com	301-869-6983
Secretary	Daniel Jonas	daniel.jonas12@gmail.com	301-208-8265
Treasurer	Tim Aley	Taley16922@aol.com	301-869-6983
Assistant Treasurer			
Membership Chair	Jim Allison	Jim-elaine@allison.net	301-706-6164
Newsletter Editor	Mike Colella	michael.j.colella@gmail.com	301-942-2853
Webmaster	Jeff Struewing	jeff@struewing.us	240-988-6422
President Emeritus	Gary Guenther	gary.guenther@iname.com	301-384-7594

Volunteers

Wounded Warrior Support Program Director	Don Van Ryk
Skills Enhancement Program Director	Matt Radtke, Eliot Feldman assistant
Public Library Exhibit Committee	Joe Bernard, Russ Iler, Mary Beardsley
Beads of Courage Program Director	Steve Haddix
Turning Works Program Director	Open
Montgomery County Ag Fair Program Director	Tim Aley
Turn for Troops Project Leader	Roman Steichen
Backup Secretary	Gary Guenther
Lending Librarian	John Laffan, Joe Barnard backup
Videography	Joe Stout, Joe Barnard.
Gallery Photography and Web Albums	Mike Colella, Tim Aley, Sidney Stone, Gary Guenther
Candid Photography	Tim Aley, Gary Guenther
Show Tell & Ask Leaders	Mike Colella, Matt Radtke, Clif Poodry
Show Tell & Ask Recording and Trucking	Richard Webster and Jim Allison
Demo Fee Collection	Bob Grudberg
Setup Committee	Jim Allison, Margaret Follas
Clean-Up Committee	Paul Simon
Discount Deacon	Steve Drake

MCW Resources

MCW Hands-on Mentoring Program: Hands-on mentoring is one of the most effective ways of learning turning techniques, tool use, and safety. We all have unique knowledge and ideas to impart. We encourage all Members to sign up to share a few hours of their time and knowledge at the lathe with each other, on a peer-to-peer basis, either in their homes or at Skills Enhancement sessions. We particularly encourage our new Members and beginners to use this opportunity to learn techniques and safety. Please let Ellen Davis know if you would like to participate.

Skills Enhancement: Once a month, we have an open lathe session at WWC, alternating on the Fridays and Sundays after the Meetings, under the guidance of Matt Radtke and Eliot Feldman. Please check the Newsletter and Web Site Calendars for monthly dates and reserve a limited slot in advance with Matt at mattradtk@gmail.com. Everyone shares skills and information, and its lots of fun.

MCW Facebook Group: Ellen Davis has created a Facebook Group just for MCW Members. The idea behind this is to allow you to post pictures of your work, ask questions, and provide another venue for our members to get to know each other better. For our MCW Facebook Group, please click the following link <https://www.facebook.com/groups/194941367515051/> and request to be added to the group. If you do not have a Facebook account and want one, please contact Ellen. We have over 45 Members involved.

MCW Lending Library: Now Free! Books and DVDs are available for borrowing. We have a good selection of video demonstrations and instructional materials from many top professional turners. If you missed a Meeting and would like to see the Program, you can check out the DVD. Please sign the form to check them out from John Laffan. If you have titles out, please return them promptly. There is no charge for this service.

Silent Auction: Not everyone has access to a chainsaw or a band saw, which makes it nice to have access to reasonably-priced, properly-sized turning blanks. Thanks to the generosity of Phil Brown and other Members, our Silent Auction provides this benefit at every Meeting. Please bring your 'road kill' to share with other Members.

Discounts: Steve Drake has assembled a selection of retailers who provide MCW Members with monetary discounts. First and foremost, of course, is the Woodworkers Club, but we have a number of others too. Please check out the list of participating merchants on the Web Site or at the end of each Newsletter.

Web Site: <http://montgomerycountywoodturners.org> Thanks to Webmaster Jeff Struewing we have an outstanding Web Site.

Newsletters: The MCW Newsletter Archive, accessible on the website, is a tremendous resource, containing the complete history of all MCW programs and activities from day one, as seen on a monthly basis through the years. All past issues back to Volume 1, Issue 1 in 2007 are available at <http://montgomerycountywoodturners.org/newsletters/>

Our Hosts: Our most important resource is our space. We are deeply indebted to our hosts, [The Woodworkers Club](#), for their continuing support in sharing their facility with us as we move into our tenth year. Please give Amy, Chris, Matt, and Ralph your individual expressions of appreciation, both verbally and with your wallets. If you need something, they will get it for you, either off the shelves or from the catalog – with no shipping charge.



Member Discounts

Woodworkers Club Rockville, Maryland (www.woodworkersclub.com). The Woodworkers Club, a Woodcraft affiliate, offers MCW Members a 10% rebate on all regularly priced items. After reaching certain plateaus of spending, you will become eligible for a rebate which you will receive by email and is good for 3 months. Non-qualifying items are power tools, items already on sale, gift cards, and items from companies that prohibit discounting (Festool, SawStop, Leigh, and a couple others). Our relationship with Woodworkers Club is very synergistic and important to us, and I encourage you to make your woodturning and woodworking purchases from them. If they don't have something in the store that's in the Woodcraft catalog or on their web site, they will get it for you, and you can save on shipping by picking it up at the store.

Exotic Lumber, Inc. Frederick, Maryland (<http://www.exoticlumber.com/>) With over 130 species in stock, Exotic Lumber has one of the widest selections available on the East Coast. We offer a 10% discount to MCW Members with membership badge. We have warehouse locations in Frederick and Annapolis, where you are welcome to select from our extensive selection of turning blocks.



Craft Supplies USA (www.woodturnerscatalog.com) is a family-owned and operated business serving the woodturning community. Individual MCW Members can save 10% on all finishes & disc abrasives -- just mention "Montgomery County Woodturners" and save, all year long.



Hartville Tool (www.hartvilletool.com) is a nationwide retailer of general and specialized tools for woodworking and home improvement. They offer free shipping to all. If you have accepted the MCW offer to "opt in" to be a member of the Hartville Tool Club, you will get a 15% discount on all tools (excluding sale items, gift cards, special orders, and Festool Products).



North Woods Figured Wood (www.nwfiguredwoods.com) North Woods is a multi-generational family-owned supplier of wood and wood blanks specifically selected with the woodturner in mind. They specialize in Pacific Coast native species of trees and have sizes from single pen blanks up to 1,500 lb. whole burls. With 20+ species in stock, there is something for everyone. Members get a 15% discount by mentioning their MCW membership during a phone order or by entering "WOODTURNERS" as a coupon code during online ordering.



2018 dues are due this month and next. They are remaining at \$25/person (\$35/family). AAW is having a special membership drive where people can join AAW for \$20 for 3 month with the option of \$40 for the next 9 months. Membership in both MCW and AAW qualifies a member to enter the drawings for the AAW turning

Tailstock



Tim Aley
4" x 6" bowl [red maple, acrylic marbling paint]
Utilizing Steve Haddix program demo technique
from June meeting.