



OFFICIAL CHAPTER  
**AAW**  
AMERICAN ASSOCIATION  
OF WOODTURNERS

#### MEETING AGENDA

6:30-7:00 - Set-up, Check in Show & Tell  
Silent Auction, Shop  
7:00-7:30 - Business meeting  
7:30-7:50 - Show, Tell & Ask  
8:00-9:20 - Program  
9:00-9:45 - Clean up, Claim & pay for  
auction items

#### Meeting Location

WOODWORKERS CLUB  
11910-L PARKLAWN DR  
ROCKVILLE, MD 20852  
301-984-9033  
**REMEMBER TO PARK IN  
BACK**

## October Meeting -Thursday 10th Judy Ditmer - Bleached Little Bowls

### Contents

Evening Program	1
Presidents Message	3
Editors Corner	3
Meeting Minutes for Nov.	4
Direct links to photos	7
WWC article	8
Upcoming Programs	10
Skills Enhancement	11
WWP	12
Turn for Troops	12
Bring Back	13
Click It	14
Video View	14
Gallery Photos	15
Treasures Report	35
AAW Focus	36
Member Contacts	37
MCW Resources	38
Member Discounts	39
Tailstock	40

Judy Ditmer has been turning wood for 32 years. She makes everything from finger tops to jewelry; candlesticks to one-of-a-kind bowls and sculptures. Everything is individually designed and hand-turned by Judy alone. On some pieces, (most notably jewelry and wall sculptures) she does additional work after the piece comes off the lathe, such as cutting and reshaping, coloring, reassembling and finishing.

Judy loves the process of turning; it is a source of endless fascination to her how such a basic, simple process allows for the exploration and expression of so many possibilities and ideas.

Her work is sold in shops and galleries all across the U.S. Judy teaches classes and workshops at her own studio



and around the United States and Canada. She lives and works in Ohio, in the house her grandparents bought just after she was born.

Judy describes her Bleached Little Bowls demo as follows:

*I love a well-made bowl. I love the idea of a bowl: the potential it embodies to contain the items, moments and nourishment of our lives. I have turned many things over the years, but my first love is making bowls. There is a special magic in searching for the perfect curves and subtle details that express a grace and equilibrium which seem impossible to attain elsewhere in life.*

*These bowls are part of a new series exploring new ways of seeing bowls. They have been partially bleached and treated with liming wax to further whiten the surface. I like the way this changes the look of the wood; the bleached surfaces may even appear to be an entirely different material*



## President's Perspective (Ellen Davis)

Continuing our conversations about Elections – We will vote on our new Board at our December 2019 meeting. So now is the time to raise your hand and join the Board.

We will set the ballot in November and vote at our December 2019 meeting, after we have our Annual Pot-Luck.

Remember Dues are due by December 2019 meeting. Dues will remain at \$25 per year for an individual or \$35 per year for a family. Please bring your check made out to Montgomery County Woodturners or cash. Additionally you MUST fill out a renewal form and please include all information even if you think we have it.



*Ellen*

*Komorebi (n.) Japanese – Sunlight filtered through the leaves of the trees*



## Editor's Corner (Mike Colella)

As I put this together, reading all the articles, I felt compelled to mention the excellent article by Bob Anderson concerning our hosts the Woodworkers Club. If you read nothing else, please read his article and take it to heart. Then take a moment and imagine where MCW would be/go if it wasn't for WWC. THANKS to AMY, Chris and Ralph and all the generous staff for all you do for MCW.



For now must run, still very busy with the Faire, thanks to those of you whom have stopped by the booth to say hi. Weather so far has been great, just hope it continues.

As of this weekend, there are still 2 more weekends to check out a little bit of the art and the fun of the Renaissance era. Weekends 10-7 till October 20. Tips: DO buy your tickets the night before, good weather days sell out. Come early (10am) to avoid crowds or after 3, many people start leaving after 4. And do stop by and say hi, my booth name is Sleeping Beauties. HAZZAH



## **MCW September, 2019 Meeting Minutes**

### **Operations:**

Tim Aley shot the photos of the Show Tell & Ask Gallery in Mike Colella's absence; John Laffan trucked. Tim also brought a cake to celebrate Richard Webster's birthday. Joe Stout shot the video with setup assistance from Joe Barnard. Thanks to the Joes for working with the system between meetings to make it more reliable.

**Introduction:** Just under 30 members attended.

**Vice President Bob Anderson** presided in President Ellen Davis' absence.

**Name tags:** please wear your name tag so members can put a face with a name. If you do not have a permanent one, sticky paper blanks can be found on the table. Order forms for permanent tags (nice to have and you can't beat the price) are also on the table. Make a new Member feel at home -- kindly engage someone you don't know in conversation.

**Silent Auction:** Please bring your roadkill, band-saw blanks, and old roughouts to share with your friends and benefit MCW. But remember, if it doesn't sell, you have to take it back home with you. Please fill out an auction sheet, obtained from the entry table, for each piece, indicating your name and a minimum bid.

**Welcome Guests:** There were no guests.

**Bring-back Challenge Program:** William Flint previously won Mike Colella's powerful magic wand. William brought a novel, gift-boxed bottle opener that was won by Mary Beardsley. Don't miss out on an opportunity to win a new piece from Mary -- get your lathe spinning, start making, and plan to take a free ticket at the October meeting.

**MCW Membership:** Membership fee structure: \$25 for an individual and \$35 for a family membership. Please see Tim Aley or Jim Allison for renewal and new memberships.

### **New Business & Activities:**

**Bob Anderson** discussed the fact that some woodturning clubs are struggling financially, in no little part because they have to pay exorbitant rent for their meeting space. MCW is able to keep our dues low and carries a healthy treasury because our friends and supporters at the Woodworkers Club have provided our space for free for the last 13 years. Bob reminded us that the best way to show our appreciation is at the cash register. Support our hosts! Take care of the people who take care of us.

Your Secretary concurs strongly but would also like to remind everyone that *Turn For Troops* is a Woodcraft national program, and our support of TFT is also support for WWC. Last year, with our help, WWC turned in 902 pens to national. So plan to join Roman Steichen (and me) on October 12th and/or 19th to help make pen kits (with materials donated by WWC), and be sure to put November 8-10 on your calendars for the big event when we make pens and instruct and assist community members in making pens. Make a difference.

**Bob Anderson** also discussed the fact that nothing, and he means *nothing*, happens in MCW unless it is done by a volunteer, because this is, after all a solely volunteer organization. Bob encouraged people to step up, join in, and participate. There are plenty of tasks to go around, and



everyone has something they can contribute. Think about it. Talk to Bob or Ellen to find out how you can help and be relevant. Did I say “make a difference”?

**MoCo Ag Fair:** Tim Aley reviewed our week-long August activities at the Gaithersburg Fairgrounds that he so ably directed again this year, speaking of stepping up! Seriously, what would we do without Tim? The weather was fine, many members volunteered their time and talents, items were turned, the public was engrossed, and everyone had fun.

**Glen Echo – Stone Tower Gallery Exhibition “Turning Wood into Art”:** Our August show at Glen Echo was a HUGE Success. MCW had 19 pieces on display for five weeks. Sixteen of the pieces were for sale, and eight of them sold for a total of \$1,895. Three quilts also sold, including two by Joe Barnard’s wife Michele. This show of support by the community encourages the management to invite us back again next year. Congratulations to Tim Aley, Bob Anderson, William Flint, Jeff Struewing, Joe Barnard, Richard Zemlo, Bridget Zemlo, and Allan Starr. Thanks to Ellen Davis, Bob Anderson, and William and Maggie Flint for breaking down the exhibit.

**Phil Brown’s Wood Hoard Part Duex:** Saturday, September 21, 2019 from 9:00am – 5:00pm. Phil’s shop equipment, tools, wood prepared for turning, flitches and roughed-out bowls will be available. Please contact Barbara Wolanin [barbwolanin@gmail.com](mailto:barbwolanin@gmail.com) or Matt Radtke [matt.radtke@gmail.com](mailto:matt.radtke@gmail.com) for additional information.

**Derwood’s Agricultural History Farm Park – Harvest Festival:** One day, Saturday, October 5<sup>th</sup> from 11:00 a.m. – 4:00 p.m. They are anticipating 2,000 participants. This is a living history museum that features traditional crafts and farm life in Maryland over the last 200 years. MCW will feature its pole lathe turning, possibly along with a small Jet lathe, and carving. We are sharing space with the carvers and the “early furniture” makers. (see that Tim Aley guy)

**Blacksmith & Traditional Arts Show:** Also at the Derwood Ag. Park. Saturday & Sunday, November 2<sup>nd</sup> & 3<sup>rd</sup>, from 10:00 a.m. – 4:00.p.m. MCW will support the blacksmiths. (yeah, see that Tim Aley guy)

**Blackrock Exhibit:** In March 2020 (that’s only a few months from now), MCW will once again share a show with Chesapeake Woodturners and the Mid Maryland Woodturning Club. The Opening Reception is scheduled for February 29. Really? Hey, it’s a Leap Year! Plan ahead.

**Mid Atlantic Woodturning Symposium:** Registration is now open for this year’s fourth-annual MAWTS. The symposium runs from Friday, October 4 at 7:00 p.m. to Sunday, October 6, 2019 at 3:00 p.m. Location: The Lancaster Marriott/Convention Center at Penn, 25 S. Queen Street, Lancaster, PA 17603. <http://www.mawts.com/> **Featured demonstrators are** Mike Hosaluk, Trent Bosch, Dixie Biggs, Nick Cook, Graeme Pridle, Melissa Engler, and Mark Sfirri. None of these well-known turners demonstrated in Raleigh this year, so there is no repetition with this year’s AAW Symposium demos.

### **Program News:**

**Wounded Warriors Program:** There will now be two Sessions held for our WWP each month. The Friday Sessions will run from 12:30 p.m. – 2:30 p.m. The next Friday session is scheduled for Sept 20<sup>th</sup>. The new session will be held on Wednesdays from 12:00 p.m. – 2:00 p.m. The next Wednesday session is scheduled for Sept 25<sup>th</sup>. Contact Don Van Ryk for more information at [dvanryk@aol.com](mailto:dvanryk@aol.com)

**Skills Enhancement Program:** The month's session will be held on Sunday, Sept. 15 from 10 a.m. – 1 p.m. Reservations are required. If you would like to attend, please email Matt Radtke at [mattradtke@gmail.com](mailto:mattradtke@gmail.com) to reserve a space. Please note when Skill is held on a Thursday the hours are 2 p.m. – 5 p.m., and when held on a Sunday they are from 10 a.m. – 1 p.m. For 2019 here are the remaining dates for Skills (may be subject to change): Sept. 15, Oct. 10, Nov. 7, and Dec. 8.

**Public Library Exhibits:** We are currently exhibiting at the Potomac Public Library for September and hopefully at the Davis Public Library in October. Contact Joe Barnard at [barnards@wood-crafted.com](mailto:barnards@wood-crafted.com) with any questions.

**Turn for Troops:** Roman Steichen announced that 2019 will again be a great year for TFT, but it can't be done without your help throughout the year. Please contact Roman at [3rdgenpenshop@gmail.com](mailto:3rdgenpenshop@gmail.com), and let's start making blanks and turning pens now to get a jump start on our goal. Roman reported that with the addition of 57 more pens, the total is up to 237. As in past years, Roman will hold pen kit making sessions at the Woodworkers Club in October. Dates this year are Saturdays the 12<sup>th</sup> and 19<sup>th</sup>. Please plan to come to help saw and drill and glue and trim. It's a great way to learn the process and to help out at the same time. November is fast approaching. Let's get some production going!

**Beads of Courage:** Stephen Price is heading up our 2019 effort to help John's Hopkins Children's Oncology Department with Beads of Courage lidded bowls. Please contact Stephen at [prices1950@yahoo.com](mailto:prices1950@yahoo.com)

**Turning Works:** Bowls are donated to help local MoCo Charities. If you are interested in donating a bowl or two, contact Ellen directly at [Ellen@TwistedTreeDesign.com](mailto:Ellen@TwistedTreeDesign.com)

**MCW's Website:** Contact Jeff Struewing at [jeff@struewing.us](mailto:jeff@struewing.us) if you have any questions or updates.

**Facebook:** MCW's Facebook page is a private/closed group for our members. The link is <https://www.facebook.com/groups/194941367515051/> then request to be added to the group.

### **Education:**

**MCW Video and Book Library:** John Laffan is our librarian. Our books and DVDs are now free to borrow. Please sign them out and sign them back in.

**Future Meeting Programs:** Next meeting is on Thursday October 10, 2019 – Judy Ditmer will demonstrate making jewelry.

**Show, Tell & Ask :** Tim Aley conducted in Mike Colella's absence.

**Evening Demonstration Program:** Tonight's planned demonstrator, Joe Kramer, was taken ill at the last minute, and Program Chair, Steve Haddix, will step in and discuss blank preparation with an emphasis on design. He will show us how get the best out of a log, how to size a chuck tenon for best holding power, and make some shavings.

Respectfully submitted: Gary Guenther, Secretary



## **DIRECT LINKS TO ONLINE PHOTOS - (For your viewing pleasure)**

Note: All photo albums are captioned. Every photo has a caption. Depending on your platform, to see the captions look in the upper right. You should click or tap the circled "i" (which stands for "information") or the three vertical dots and then select "information" from that menu. Enjoy.

MCW Sept. '19 Gallery: <https://photos.app.goo.gl/8mxEEaFp7e1SZae86>

MCW Sept. '19 Meeting: <https://photos.app.goo.gl/w4a9jCRbRi5nRNkaA>

MCW Sept. '19 Program: <https://photos.app.goo.gl/oaLTqNAPVjGS8bEM6>

MCW Sept. '19 Potomac Public Library exhibit: <https://photos.app.goo.gl/ssKqASBarVTwjAcL7>

## **DUES ARE DUE**

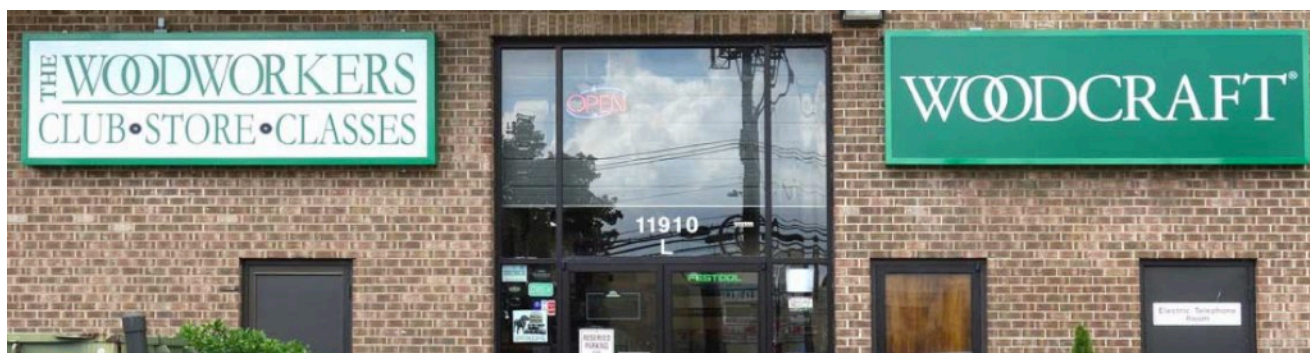
### **Attention all members:**

This Thursday we will begin to collect dues for 2020. The dues remain a very reasonable \$25 per year.

We have a new procedure in place to ensure that our records remain accurate and up to date. For your convenience starting this year, we will give each member a receipt, and the treasurer will keep a duplicate copy in the receipt book. This will provide an easy lookup to confirm that your dues are up to date. If either you or the book has a receipt, you've paid, so please make sure that you get one when you pay your dues. Checks would be appreciated for ease of tracking.

## Why We Should Buy from The Woodworkers Club Bob Anderson

At the AAW symposium this summer, I had the opportunity to talk to chapter officers from around the country. Conversations often led to two major (and related) topics: getting quality presenters and club finances. Many expressed that increasing demonstrator and site meeting costs have created substantial financial challenges for them. One club, for instance, is charged \$400 to lease their space for each meeting day. In order to survive, they are anticipating raising both dues (by 25%) and demo fees (by 50%) to meet their expenses. With professional demonstrators getting between \$600 and over \$1000 to demonstrate, with transportation charges, it's increasingly difficult for them to keep up with these space and demo costs. And this is not to denigrate demonstrators in any way; they're at the pinnacle of their craft and this is how they make their living.



I'll also relate an overheard story. It seems that sometimes folks come into the Woodworkers Club and want information on an item they sell. Staff takes time and energy to discuss the product, going over pros and cons, uses, and the like. Then the "customer" goes online and finds the product for less and purchases it on the web. In a case or two, the "customer" came back to the store and bragged about the great online price. Woodturners were not mentioned, and I'd be very surprised if any of us were involved, but it is a tale to which we should be sensitive.

When we consider both of the above stories, it becomes even more apparent that the Woodworkers Club and we have more than a casual relationship. The WWC has been our friend for the entire life of MCW, and they have





been very good to us. Once per month they give us space for our meetings. They allow us to do our skills enhancement. They give us space for the Wounded Warriors program and special events as needed, and we gladly collaborate in the valuable Turn for the Troops program. They have never charged us a dime for any of that. All of us know Amy, Chris and Ralph, and all of the staff, not only as shopkeepers but as folks we trust for information and guidance. We owe them our thanks, not only with words but through our actions. In other words, they have earned our business. Sure, we may be able to get a gouge for a few bucks less online or find a finish



somewhere else for 10% off, but what has that merchant done for the club? That sale goes to an anonymous storefront; our purchases here at The Woodworkers Club go to those who have supported us throughout the life of MCW (13 years and counting). Thanks to them, our dues and other costs remain lower than most other area clubs and we are not constantly concerned about finances.

When you are in the market for new items, from sandpaper to high end machinery, please keep our friends at the Woodworkers Club at the top of your merchant list. It's only fair that we reciprocate their friendship and support those who have, and continue to, support us.

## Future Program – Looking Ahead (Steve Haddix)

If you have suggestions for future demonstrators, or would consider demonstrating yourself, please contact our Program Chairman, Steve Haddix [sthaddix@gmail.com](mailto:sthaddix@gmail.com)

### November 7, 2019 – Chuck Engstrom – Holding your Work

Along with wood prep and tool usage, learning how to hold wood on the lathe is one of the critical aspects of woodturning. This demo is intended to be a review of variations on the most typical methods of holding a workpiece on the lathe -- the many spur drives, face plates, chucks, and other methods available to us, with hints and tips for safe use of their possibilities. Many of these will be illustrated with close-up slides to make certain features more apparent, and there will be plenty of hands-on practical use variations shown as well.

Our friend Chuck Engstrom was actually paid to learn to turn. In 2000 he went to work for a manufacturer of lighting fixtures, where he was asked on his first day if he wanted to become the turner for the wooden center spindles of their chandeliers, some as much as seven-feet tall. Sure, why not? Many of the chandeliers have painted finishes which cover the catches and scars of the learning curve in his early work. A pair of natural-finish cherry chandeliers for Sidwell Friends School, which had to have flawless surface and matching shapes, was an important milestone a few years later. He still turns most of their chandelier spindles as an outside contractor.

In subsequent years he became the house turner for a supplier of porch posts and columns in Chestertown, MD, as was mentioned in *American Woodturner* by David Fry (Vol. 30, Dec. 2015, p.47). He expanded his repertoire into the usual varieties of turning that most of us try at some point – bowls, boxes, pens, and the like. A former president of the Chesapeake Woodturners, Chuck has been the woodturning instructor at Maryland Hall for the Creative Arts in Annapolis for the last eight years. He showed us how to turn a small goblet in March of 2011: <https://photos.app.goo.gl/jUGSiNFAJbYEgFmh8>

This will be an excellent introduction for beginning turners and a meaningful review and reminder for the rest of us. I expect some surprises. Please plan to join us in November.



## UPCOMING PROGRAMS

10/10/19	Judy Ditmer	Topic TBD
11/7/19	Open	
12/12/19		Potluck dinner

## Skills Enhancement Schedule Matt Radtke

Skills Enhancement Dates (subject to change). To contact Matt Radtke at [matt.radtke@gmail.com](mailto:matt.radtke@gmail.com)

Oct. 10th se Oct 10th

Nov. 7th se nov 7th

Dec. 5th se Dec 8th

FYI Thursday 2 to 5 and Sunday 10 to 1

Rules:

Maximum wood size 3bf total....no exceptions. Think 12x12x3.

Clean the lathe area so it is cleaner than when we started.

You must bring your own wood and your own tools.

Sanding and finishing can be done at home keep these to a min.

I will help people with blank prep a few times but after a few sessions you must do it yourself.

Safety gear must be worn at all times. Glasses and face shields.

If you bring cracked blanks/wood you will not be able to use it. Also there is no chainsaw so please keep that in mind when bringing round or wood without a flat surface.



## Turn for Troops - What's in it for me - (Roman Steichen)

Turn for Troops is a little more than a month away. We have 237 pens turned.

To get us ready for the veteran's day weekend, I'm setting up two pen blank preparation sessions. Our goal is to prep 200 pens. The first one will be on Sat Oct 12 (the Sat after the meeting), 10:00am to 1:00pm. The second one will be on Sat Oct 19, same time 10-1. Please see me at the meeting to sign up to help out. How will you know if you have anything to offer? Let's count, are you able to:

1. cut blanks to length on the bandsaw?
2. drill a hole with the drill press?
3. sand brass tubes, either by hand or on a lathe?
4. glue tubes in the blanks?
5. square blanks to the tubes with a pen mill or sanding jig?
6. open pen kit bags and sort the pieces?

If you are capable of doing any of the above, we can use your help.

Last year I helped make pens for the troops. I have made pens before, but watching Roman and the others, I saw other ways of doing things. I came away with a whole new set of techniques to improve my pens. It was better than taking a class. - Jeff Gilbert

Please send me an email, text, or Facebook message, to let me know if you can help out

Thanks

Roman

[3rdGenPenShop@gmail.com](mailto:3rdGenPenShop@gmail.com)

## WWP (Don Van Ryk)

Greetings all.

Below I've listed the upcoming WWP pen turning session dates for the Friday group. We'll be on a summer hiatus for this group (the Wednesday group will be ongoing through the summer—next date June 19).

The dates are:

NO session in October

15 November

13 December

All sessions will be held at the Woodworkers Club from 12:30-2:30

Mark your calendars and I'll see you then.

2020

17 January

14 February

13 March

10 April

15 May





## Bring-back Challenge (Gary Guenther)

*It's nice to have a woodturned item in your collection from one of your friends.*

*Each month, we raffle off a piece by a Member, and the winner's responsibility is to turn a piece of their own and bring it back to the next Meeting to have it raffled off, in turn. It's a fun, if random, way for us to trade our work.*

At our September 2019 Meeting, William Flint's unique, gift-boxed bottle opener was won by Mary Beardsley, seen here accepting the piece from William. It's cool!

Next month, Mary will bring something to raffle off to the next lucky winner.

You too can join in the fun. Just say "yes" to a Bring Back ticket at the October meeting.



**CLICK IT – Web Site of the Month** (Gary Guenther)

*A recommendation of a link I believe to be worth your time:*

Short and sweet...

Dennis Fuge (rhymes with “huge”), who demonstrated for us recently, has quite a good web site. It’s worth a look. Check it out. ere it is: <http://www.timeforyou.net/>

**VIDEO VIEW – Video of the Month** (Gary Guenther)

*Online woodturning action for your viewing pleasure*

Here’s an excellent and rewarding example of why we, as woodturners, do OUTREACH. This video has it at several levels, in more ways than one. A young Chinese woman in Missouri discovered turning at an outdoor club demo and pursued it. She traded cooking lessons for turning lessons and then collaborated with her instructor to make a bowl for their local Empty Bowls program. Does it get any better? I think this (8:30) feel-good video is well worth viewing.

<https://www.youtube.com/watch?v=XmF98N6tDO4&feature=youtu.be>



## Show & Tell Gallery - August 2019



Roman Steichen Pens [walnut shells, bamboo, oak, walnut -- all



Roman Steichen 4" x 6" bowl [stabilized ash and resin]





Roman Steichen 4" x 6" bowl [stabilized ash and resin] photo enhanced to show the purple color







Roman Steichen 1-1/2" x 6" bowl [cherry] turned at Fair



Jim Allison 12" x 12" vase [root ball, glass]







John Laffan 5" x 5" Koala tea cup w/ saucer [walnut, sapse, cherry]







Steve Haddix 4" x 12" bowl [cherry crotch]







Steve Haddix 2" x 6" bowl [cat scratched maple]



Steve Haddix handmade chip carving knives





Bob Grudberg 2" x 9" triangular box  
[walnut, ?]





Bob Grudberg 14" x 6" segmented vessel [mixture]





Bob Grudberg 6" x 4"  
segmented vessel  
[redheart, walnut]







Joe Barnard 5-1/2" x 1-1/2" trees [cedar]





Joe Barnard 3-3/4" x 6-1/4" bowl [cherry]







William Flint 3" x 7" "closed #15" [elm]







Paul Wodiska 6" x 5" cheese [oak]





Duane Schmidt 2-1/2" x 7" bowl [sassafras]







Duane Schmidt 5" x 3" weed pot ?  
Pecan from Phil Brown



Mary Beardsley 3-1/2" x 10-1/2" bowl [cherry]





Mary Beardsley 3-1/2" x 10-1/2" bowl [cherry]





Mary Beardsley 4-1/2" x 12" bowl [paulownia]







Tim Aley 3-1/2" x 8" bowl [cherry]





Tim Aley 3-1/2" x 8" bowl [cherry]



Tim Aley 8" x 6-1/2" vase [sassafras]



## Treasury report - March, April, May (Tim Aley)

Beginning Balance	4992.91			
Income Items			Expense Items	
<b>March Income 2019:</b>			<b>March Expenses 2019:</b>	
Membership	\$135.00		Demonstrator	\$125.00
Silent auction	<u>\$1.00</u>			
Total income	\$136.00		Pres. AAW Symposium	<u>\$300.00</u>
			Total expenses	\$425.00
<b>April Income 2019:</b>			<b>April Expenses 2019:</b>	
Membership	\$75.00		Demonstrator	<u>\$343.00</u>
Silent Auction	\$27.00			
Nametags	<u>\$0.00</u>			
Total income	\$102.00		Total Expenses	\$343.00
<b>May Income 2019:</b>			<b>May Expenses 2019:</b>	
Membership	\$175.00		Demonstrator	\$257.82
Silent Auction	\$54.00		CCC Dues/award	\$100.00
Nametags	<u>\$9.00</u>		Nametags	<u>\$9.00</u>
Total income	\$238.00		Total Expenses	\$366.82
Ending Balance	4334.09			

Current report not available at this time.

## AAW Focus

**AAW** | OFFICIAL CHAPTER  
AMERICAN ASSOCIATION  
OF WOODTURNERS

# DID YOU KNOW?

**1** **3,000+ online projects, articles, videos, and tips are in AAW's Explore! search tool.** Get the best project instructions, technique guidelines, and information in just a few simple clicks. Easily searchable by topic and includes all interest areas.

**2** **12,000+ images of member work are in AAW's Forum gallery online.** Get inspiration, ideas, and feedback simply. Connect with woodturning enthusiasts using this member-moderated virtual community.

**3** **475+ online videos are quickly searchable by topic in AAW's Video Source.** Avoid the frustration of searching YouTube. Get relevant woodturning videos in just a few clicks. All videos are prescreened by the AAW for quality content and safety.

**4** **150+ issues of *American Woodturner* are online with a searchable index.** Access every issue of *American Woodturner* journal published in AAW's online library archive or on AAW's mobile app.

**5** **38 issues of *Woodturning FUNDamentals* publication and the Woodturning FUNDamentals online learning portal offer one-stop basics.** Helps newer turners build and expand their woodturning knowledge and skills safely with a curated selection of information, projects, tips, and videos.

**6** **365 affiliated chapters are all easily searchable on the AAW's Connects map.** Find a chapter near you fast. Search the map for symposia, demonstrations, exhibitions, events, organizations, and schools quickly and easily.

**7** **AAW membership offers the single largest collection of high-quality educational woodturning resources available anywhere.** Membership is the fastest way to learn and enhance your woodturning expertise.

**All of these resources and more are available to AAW members online at [woodturner.org](http://woodturner.org).**

Visit us to explore and customize your experience. We invite you to learn and grow with AAW. Your AAW membership is a commitment to your own personal development and expresses your dedication to preserving woodturning for future generations. Please remember to renew annually.

**AAW** | AMERICAN ASSOCIATION  
OF WOODTURNERS  
WE ARE TEACHING THE WORLD TO TURN.





## Chapter

President	Ellen Davis	<a href="mailto:ellen@TwistedTreeDesign.com">ellen@TwistedTreeDesign.com</a>	301-728-5505
Vice President	Bob Anderson	<a href="mailto:Robert.anderson4@verizon.net">Robert.anderson4@verizon.net</a>	301-270-6005
Program Chair	Steve Haddix	<a href="mailto:sthaddix@gmail.com">sthaddix@gmail.com</a>	512-423-9608
Secretary	Gary Guenther	<a href="mailto:gary.guenther@iname.com">gary.guenther@iname.com</a>	301-384-7594
Treasurer	Tim Aley	<a href="mailto:Taley16922@aol.com">Taley16922@aol.com</a>	301-869-6983
Assistant Treasurer	Ellen Davis	<a href="mailto:ellen@TwistedTreeDesign.com">ellen@TwistedTreeDesign.com</a>	301-728-5505
Membership Chair	Jim Allison	<a href="mailto:Jim-elaine@allison.net">Jim-elaine@allison.net</a>	301-706-6164
Newsletter Editor	Mike Colella	<a href="mailto:michael.j.colella@gmail.com">michael.j.colella@gmail.com</a>	301-942-2853
Webmaster	Jeff Struewing	<a href="mailto:jeff@struewing.us">jeff@struewing.us</a>	240-988-6422
President Emeritus	Gary Guenther	<a href="mailto:gary.guenther@iname.com">gary.guenther@iname.com</a>	301-384-7594

## Volunteers

Wounded Warrior Support Program Director	Don Van Ryk
Skills Enhancement Program Director	Matt Radtke, Eliot Feldman assistant
Public Library Exhibit Committee	Joe Barnard, Mary Beardsley
Beads of Courage Program Director	Stephen Price
Turning Works Program Director	Ellen Davis
Montgomery County Ag Fair Program Director	Tim Aley, Paul Sandler (assistant)
Turn for Troops Project Leader	Roman Steichen
Backup Secretary	Steve Drake
Lending Librarian	John Laffan
Videography	Joe Stout, Joe Barnard, Joe Mosli
Gallery Photography	Mike Colella
Candid Photography and Web Albums	Tim Aley, Gary Guenther, Mike Colella
Show Tell & Ask Leader	Mike Colella
Show Tell & Ask Recording and Trucking	Richard Webster and Jim Allison
Demo Fee Collection	Bob Grudberg
Setup Committee	
Clean-Up Committee	Paul Simon, Paul Sandler
Discount Deacon	Steve Drake
Bring Back Challenge Ticket Giver	Bob Grudberg
Activities Coordinator	Tim Aley

## MCW Resources

**MCW Hands-on Mentoring Program:** Hands-on mentoring is one of the most effective ways of learning turning techniques, tool use, and safety. We all have unique knowledge and ideas to impart. We encourage all Members to sign up to share a few hours of their time and knowledge at the lathe with each other, on a peer-to-peer basis, either in their homes or at Skills Enhancement sessions. We particularly encourage our new Members and beginners to use this opportunity to learn techniques and safety. Please let Ellen Davis at [Ellen@TwistedTreeDesign.com](mailto:Ellen@TwistedTreeDesign.com) know if you would like to participate.

**Skills Enhancement:** Once a month, we have an open lathe session at WWC, either on Thursday's before the meeting or on the Sundays after the Meetings, under the guidance of Matt Radtke and Eliot Feldman. Please check the Newsletter and Web Site Calendars for monthly dates and reserve a limited slot in advance with Matt Radtke at [mattradtke@gmail.com](mailto:mattradtke@gmail.com). Everyone shares skills and information, and its lots of fun.

**MCW Facebook Group:** MCW has a private Facebook Group. Use it to post pictures of your work, ask questions, check out upcoming events, and it provides another venue for our members to get to know each other better. Go to <https://www.facebook.com/groups/194941367515051/> and request to be added to the group.

**MCW Lending Library:** Books and DVDs are available for borrowing. We have a great selection of video demonstrations and instructional materials from many top professional turners. If you missed a Meeting and would like to see the Program, you can check out the DVD. Please sign the form to check them out from John Laffan. If you have titles out, please return them promptly. There is no charge for this service.

**Silent Auction:** Not everyone has access to a chainsaw or a band saw, which makes it nice to have access to reasonably-priced, properly-sized turning blanks. Please bring your 'road kill' to share with other Members.

**Discounts:** Steve Drake has assembled a selection of retailers who provide MCW Members with monetary discounts. First and foremost, of course, is the Woodworkers Club, but we have a number of others too. Please check out the list of participating merchants on the Web Site or at the end of each Newsletter.

**Web Site:** <http://montgomerycountywoodturners.org> Thanks to Webmaster Jeff Struewing we have an outstanding Web Site.

**Newsletters:** The MCW Newsletter Archive, accessible on the website, is a tremendous resource, containing the complete history of all MCW programs and activities from day one, as seen on a monthly basis through the years. All past issues back to Volume 1, Issue 1 in 2007 are available at <http://montgomerycountywoodturners.org/newsletters/>

**Our Hosts:** Our most important resource is our space. We are deeply indebted to our hosts, [The Woodworkers Club](#), for their continuing support in sharing their facility with us. Please give Amy, Chris, Matt, and Ralph your individual expressions of appreciation, both verbally and with your wallets. If you need something, they will get it for you, either off the shelves or from the catalog – with no shipping charge.





## Member Discounts

**Woodworkers Club Rockville, Maryland** ([www.woodworkersclub.com](http://www.woodworkersclub.com)). The Woodworkers Club, a Woodcraft affiliate, offers MCW Members a 10% rebate on all regularly priced items. After reaching certain plateaus of spending, you will become eligible for a rebate which you will receive by email and is good for 3 months. Non-qualifying items are power tools, items already on sale, gift cards, and items from companies that prohibit discounting (Festool, SawStop, Leigh, and a couple others). Our relationship with Woodworkers Club is very synergistic and important to us, and I encourage you to make your woodturning and woodworking purchases from them. If they don't have something in the store that's in the Woodcraft catalog or on their web site, they will get it for you, and you can save on shipping by picking it up at the store.

**Exotic Lumber, Inc. Frederick, Maryland** (<http://www.exoticlumber.com/>) With over 130 species in stock, Exotic Lumber has one of the widest selections available on the East Coast. We offer a 10% discount to MCW Members with membership badge. We have warehouse locations in Frederick and Annapolis, where you are welcome to select from our extensive selection of turning blocks.



**Craft Supplies USA** ([www.woodturnerscatalog.com](http://www.woodturnerscatalog.com)) is a family-owned and operated business serving the woodturning community. Individual MCW Members can save 10% on all finishes & disc abrasives -- just mention "Montgomery County Woodturners" and save, all year long.



**Hartville Tool** ([www.hartvilletool.com](http://www.hartvilletool.com)) is a nationwide retailer of general and specialized tools for woodworking and home improvement. They offer free shipping to all. If you have accepted the MCW offer to "opt in" to be a member of the Hartville Tool Club, you will get a 15% discount on all tools (excluding sale items, gift cards, special orders, and Festool Products).



**North Woods Figured Wood** ([www.nwfiguredwoods.com](http://www.nwfiguredwoods.com)) North Woods is a multi-generational family-owned supplier of wood and wood blanks specifically selected with the woodturner in mind. They specialize in Pacific Coast native species of trees and have sizes from single pen blanks up to 1,500 lb. whole burls. With 20+ species in stock, there is something for everyone. Members get a 15% discount by mentioning their MCW membership during a phone order or by entering "WOODTURNERS" as a coupon code during online ordering.



## *Tailstock*



**Roman Steichen 4" x 6" bowl [stabilized ash and resin]  
photo enhanced to show the purple color**