



OFFICIAL CHAPTER
AAW
AMERICAN ASSOCIATION
OF WOODTURNERS

MEETING LOCATION

Your own home,
in that favorite easy chair,
or the living room couch.

MEETING AGENDA

6:30 - 7:00 - Log into Zoom, get oriented
7:00-7:15 - Business meeting
7:15-7:30 - Show, Tell & Ask
7:30-9:00 - Program
9:00-It's over and NO CLEANUP:)

Notice to all, submissions for TJ must be in by 25th of the month. Thanks

November 12th, 2020 John Beaver - Wave Bowl

We suggest a
contribution of at
least \$5.

Contents

Evening Program	1
Editors Corner	4
Presidents Message	5
Minutes April Virtual Meeting	6
BlackRock Online Show	9
Direct links to photos	10
Future Programs	10
Show & Tell	11
Click It & Video View	25
Treasures Report	27
Members in The News	28
AAW Focus	29
Links	30
Member Contacts	31
MCW Resources	32
Member Discounts	33
Tailstock	34

Wave Bowls

In this action packed demo John will show two different ways to make his signature wave vessels. For the first piece, John will take a block of wood, cut it apart, add a contrasting wood to create the wave and show you how to put it back together keeping the grain aligned. With a bandsaw, a few clamps and basic turning tools, this is a project you will be able to go home and do yourself.



The second piece will be a protruding wave bowl from a rough turned bowl. For this piece John will use his custom jig to cut a turned bowl into pieces. He will then modify the



elements and put it all back together. This piece has a higher skill level but there are many tricks that may help you with some of your own designs.

While the design of the wave is the feature of this presentation, there are many additional tricks you will learn. John will show you safe ways to cut a round bowl on a bandsaw with almost any angle, and put it back together keeping the walls and grain aligned perfectly. You will learn how to bend wood in a microwave oven, which is interesting and has many fun applications. You will learn how

to precisely turn a bowl smaller keeping the proportions exact. Most importantly, John hopes you will be able to use these ideas and tips to change and improve your own designs.



John writes: “After spending over 25 years in Hollywood, filming television commercials, I began experimenting with a lathe I had inherited. Before I even mastered the technique, I could see that I wanted to find a way to give the pieces a little more life. A bowl, or a vase, or a sculpture sits on a shelf and has a form, and there’s a certain beauty in that, but I wanted to add movement and energy to that form.

I have always lived near the ocean, and was inspired to bring the motion and rhythm of the waves to a round object. The exploration of that concept led to the “wavy” design which is still the core element of my work today.

I started by placing the design on bowls, because that's kind of the obvious thing to make on a lathe, but as I developed new techniques I found that I could remove the restriction of the vessel and let the design stand alone as a sculptural form.

By working with round forms I found this opportunity to create designs that have no beginning or end. Even as they sit still, you can imagine the design wrapping around the piece and coming back into view, giving rhythm to the design. By moving the shapes around on the piece I found the energy that hopefully gives a feeling of movement to an otherwise static form.

I live in Pacific Palisades, CA. When I'm not in the studio, I enjoy Golf, Paddle Tennis, Skiing, Cycling, Kayaking, Hiking and Bocce..”



Editor's Corner (Mike Colella)

SELF Show & Tell

For our virtual Show & Tell, we will limit people to 2 turnings. **Submission deadline, Noon of meeting day**, please email your images to me (michael.j.colella@gmail.com), **please "Attach" the images**, do not imbed them in the email. Include the following information for each piece:

- Your name
- Title (if any)
- Size
- Wood species
- Finish notes
- Any other information you might want to add.

I will prepare all the images to show, and when your piece comes up you will be allowed to open your mike and discuss your piece while it is being showed. Please keep your comments to 2 minutes.

Please join in.

November 12th, 2020 Remote Meeting Information

Our meeting will be conducted over ZOOM. You will receive the ZOOM meeting information at least 24 hours before the meeting via email from William Flint, Program chair. The meeting will begin at 7pm, but the ZOOM meeting will be active at 6:30 for system testing, chat with friends, and fellowship! Sign in, mute your microphone unless speaking, and get comfortable!

Agenda:

7:00	President's Remarks and abbreviated business meeting	Bob Anderson
7:15	Show Tell and Ask	Mike Colella
7:30	Demonstration:	John Beaver

Meeting Notes: Get involved, ask, share, and chat!

Please mute your microphone unless you are speaking

All participants will be muted during the presentation. If you want to comment or ask a question, "Raise your hand" or post a comment in the Chat. The moderator will either ask the presenter the question or will call on the person asking the question to un-mute and engage.

Test your Zoom settings before the meeting at <https://zoom.us/test?zcid=1231>

Zoom Support Center: <https://support.zoom.us/hc/en-us>

To help defray the cost of the demonstration, you are encouraged to chip in using our secure PayPal link on the MCW website. We suggest a contribution of at least \$5. You do not have to sign up for PayPal to send money. Click on the link or navigate from the "Meetings" page.

<https://montgomerycountywoodturners.org/demo-fee/>

You can always mail a check if you prefer. Instructions are on the Remote Demo Fees page.

Please call me with questions. 301 379 2046 (William)



President's Perspective - Bob Anderson

I hope you and yours are safe and well.

With the November national elections behind us as you read this (I hope – this is being written October 29), it is time to consider our own Montgomery County Woodturners' elections. Each year in December we elect a new board to serve for the next calendar year. All positions are always open for the election, and any member can nominate herself/himself or another member.

Per MCW by-laws, our board positions are:

- President
- Vice-President
- Secretary
- Treasurer
- Program Chair
- Membership Chair
- Newsletter Editor
- Webmaster
- Past President (not up for a vote but it changes with a change of president)

Eight of our current officers have said that they would be willing to continue in their roles, and they have all done a superb job. Our program chair has indicated he will not be up for re-election, so there will not be an incumbent running for that position. However, all that being said, it merely means that the current officers have self-nominated for 2021.

The work of the board is not overwhelming, but it is significant. For instance, this year the board approved a membership policy (thanks to our membership chair) and revised our by-laws, which were approved by members at the October meeting. Thanks to our webmaster, we have a new email system as well. We have also addressed a variety of new topics to meet the demands of the pandemic, including instituting Interactive Remote Demos (IRDs). Officers do have influence on the direction of the club.

Issues will continue to arise in 2021, including

- * if and when we will go back to in-person meetings,
- * if we will continue IRDs,
- * how to maintain and increase our membership when we cannot get together,
- * how to increase attendance at our IRDs,
- * holding joint IRDs with other clubs, and more.

Please consider running for the board of your club, if not now, in the future. We are only as strong as the involvement of all of our members.

Stay well.
Bob

MCW October 8, 2020 Meeting Minutes

Introduction:

Welcome Members and Guests: Welcome to our seventh virtual meeting, and welcome guests. We want to especially extend a hardy welcome to our guests from Mid-Maryland Woodturners. Seventeen screens were active at 7 p.m. for the start of the business meeting.

Bring-back Challenge: currently suspended

MCW Membership: As 2020 is coming to an end, the club is looking to both keep all of you fine members and also recruit new members. William Flint, Paul Sandler, Matt Radtke and Bob Anderson were at the Woodworkers Club OctoberFest on Saturday and gave club information to a number of people, some of whom were area turners and didn't know of us. If you know of turners who are not club members, or of folks who may be interested, please invite them to attend a meeting. During this pandemic, many folks are suffering economically. **If you know someone who has not paid due to financial hardship**, please have him/her contact Steve Drake and membership will be renewed, no questions asked. This will be kept confidential. We already have some members who have accepted that courtesy and offer it to all. Membership fee structure: \$25 for an individual and \$35 for a family membership.

Demonstrator fees: We hope that you have had an opportunity to visit our [Demo Fee site](#) and contribute to keep the club turning and defray costs for our demo tonight. William Flint, Jeff Struewing and Tim Aley worked diligently to make this happen for us, and your financial support will help keep MCW solvent for years to come.

Demonstrators are typically charging around the same amount for virtual demonstrations as they do for in-person demos. The club saves some on travel expenses, so costs are a bit lower, but costs remain. In normal times we collect demo fees at the door to cover expenses. Since we now have a virtual door, the Board determined that the PayPal platform was the most effective option for us. You can use either a PayPal account or just input your credit card information over our secure site. Or, if you like, you can mail Treasurer Tim Aley a check. Over the past year or so, programs have often been offered without a demo fee, and Tim does a great job keeping our treasury in good shape. To keep it that way, we will be charging reasonably for demos as MCW always has.

Ways to contribute:

1. [On our site](#) inputting your credit card or PayPal information;
2. Mail Tim a check.

New Business & Activities:

Delaplaine Show: The opening for our three-club show, *Tree Spirits*, at The Delaplaine Arts Center in Frederick, was Saturday, October 3. We owe a big thanks to Dave Swiger, MMWTC, for initiating the show and inviting us, Ken Lobo, who coordinated for CW, and Tim Aley, our MCW coordinator. We also owe a big thanks as well as the jurors, our friends and wife and husband, Drs. Judy Chernoff and Jeffery Bernstein. The show is great. Congrats to MCW members Ken Lobo, Duane Schmidt, and William Flint for their first, second and third place awards. Please see the October Turning Journal for more info and links to the opening ceremony and gallery views. Dave also informed us that there will be a new enhanced video gallery walk of the show up soon.

Elections: Election of officers for 2021 is coming up in just two months. The vote will be held virtually at our December 10 meeting. Please consider running for an office to keep your club running smoothly. At this time, William Flint has notified us that he will be stepping down as Program Chair, so someone will have to step up to this very important position. Members can self-nominate for this and all other club board positions. For a list of current officers and board positions, please see the *Turning Journal* newsletter.

Volunteers: MCW has so many great programs and we have many members who help but we need more. For instance, Steve Haddix and Duane Schmidt have volunteered to do our six yearly Sunday Skills Enhancements, Don Van Ryk does the invaluable Wounded Warriors Program, and Roman Steichen has volunteered to do pen turning for Thursday Skill Enhancements. These will all resume when this pandemic has abated.

Selling and Displaying: Many members sell and display their work. They do so in venues from the large, formal Renaissance Festival to various once a year holiday shows, but we often don't know about it. In order to notify our members of what we're doing, we have a monthly *Turning Journal* article listing members who are selling and/or displaying their work. That way we can support each other in our artistic endeavors. Let Mike know your activities.

Local demonstrators: We have quite a few members with excellent skills and solid techniques who can demonstrate them for us and other local clubs. We are getting together a list of local talent from a number of local clubs to share. If you are interested in doing demos for us and/or for other local clubs, please email President Bob Anderson, and you'll be added. This is a way to get your artistic talent known and a way for our clubs to have access to a pool of quality local turners.

By-Laws revisions: The current By-Laws and the suggested revisions to our By-Laws were sent by email to all members. The board met to confirm board approval and the final step is for the membership to vote. The new By-Laws were approved by assent of those attending.

Amy Rothberg reported that she is a member of a new makerspace in Virginia – nova-labs.org. She is interested in setting up a woodturning Skills Enhancement program. If anyone is interested in assisting, please contact Amy.

Program News:

During our current pandemic crisis, all of our in person programs and events have been canceled. This includes Skills Enhancement and our in-person meetings at the Woodworkers Club. All are scheduled to resume once the pandemic abates.

Public Library Exhibits: Joe has told us that the libraries remain closed, so there is nothing new to report.

Wounded Warriors: Due to concerns about the pandemic, the MCW board made the extremely difficult decision to suspend the Wounded Warriors Program until we are sure that it is safe to begin again.

Turn for Troops: The Woodworkers Club has notified us that the event will be virtual this year. You can get pen kits from Amy at the store or from Roman Steichen. Roman has kits now, so contact him, and he'll work something out if you want materials to turn some pens for this year. Turn at home and get them back to Roman for our troops. Additionally, to expand the program, Roman is working with the Mid-Maryland Wood Turners Club. Roman's email is 3rdgenpenshop@gmail.com.

Beads of Courage: Stephen Price continues to coordinate our Beads of Courage lidded bowls program. He hopes you will take some of your time at home to turn a box or two for the children. Stephen's email is prices1950@yahoo.com.

Turning Works: Bowls are donated to help local Montgomery County charities. Ellen Davis says that there is no change currently with this program. If you would like more information or to provide a bowl, contact Ellen at Ellen@TwistedTreeDesign.com.

Facebook: MCW's Facebook page is a private/closed group for our members. The link is <https://www.facebook.com/groups/194941367515051/>. Go there and request to be added to the group.

Woodworkers Club news: Amy says, "We had such a great time on Saturday [at the WWC OctoberFest]! It was wonderful to see everyone come out and support our local community of crafters, and big thanks to MCW for arranging the lathe demonstration for the day. In other news, Chris has plenty of pen kits to pass out for Turn for Troops, which sadly will have to be just a virtual event this year. He'll work with Roman to facilitate again."

Chris notified Bob Anderson that WWC may be setting up a schedule for folks to rent lathe time as they refine the use of their expanded space. Check the WWC website for information as it becomes available. He also said that if members want to come in to turn pens for Turn for the Troops, he would offer the time at no charge. Contact him for more information on this.

Bob's addendum: The outdoor OctoberFest celebration was a big success. Read the *Turning Journal* for information and pictures of the events. William Flint, Paul Sandler, Matt Radtke and Bob Anderson were there to support WWC and MCW. Mike Colella and Joe Barnard had their own spaces and added to the public's awareness and appreciation of woodturning. Joe reported that: "It went great. I sold a lot of stuff – it was my best day all year."

Future Meeting Programs: Due to the pandemic, William Flint is scheduling **virtual demonstrations** through the end of the year. This will continue in 2021 as long as necessary.

The next meeting is on **Thursday, November 12 with John Beaver**. It will be a virtual online meeting. For additional program information, read the *Turning Journal*.

Show and Tell: Mike Colella

Mike showed the photos while the following members talked about their items and answered questions and comments: Bob Browning, Richard Webster, Bill Long, Gary Guenther, Joe Barnard, Ken Lobo, Tim Aley, and Jeff Struewing.

Evening program: **Jason Clark** Saturn Bowl with moveable rings. Twenty-seven screens were active.

Respectfully submitted, Gary Guenther, Secretary

We received this note earlier this month from Anne Burton, Gallery Director, Blackrock Center For The Arts:

Dear Exhibiting Artist,

I hope this email finds you well. Just in case you have not already heard, I wanted to let you know that I am back working part time as Gallery Director at BlackRock Center for the Arts. Our galleries are still closed to the public, but we are presenting exhibitions online.

I am writing to let you know that we are going to feature your artwork in an Online Exhibition of the **“HANDCRAFTED: Fiber Art + Turned Wood”** juried show. As you know, the exhibit was suddenly canceled back in March and we did not get the chance to properly highlight the selected artists and their artwork. For the Online Exhibition **“HANDCRAFTED: Fiber Art + Turned Wood”** I will be using the digital images we have on file of your selected artwork. As soon as I have promotional materials, including the direct links to the web page and social media, I will be sending those to you. The dates for the Online Exhibition are listed below.

ONLINE EXHIBITION

HANDCRAFTED: Fiber Art + Turned Wood

Biennial Juried Exhibition Featuring Works by 48 Contemporary Artists and Fine Craft Artisans from Across the Region

On View in Our Virtual Galleries:

November 14, 2020 – January 2, 2021

BlackRock Center for the Arts

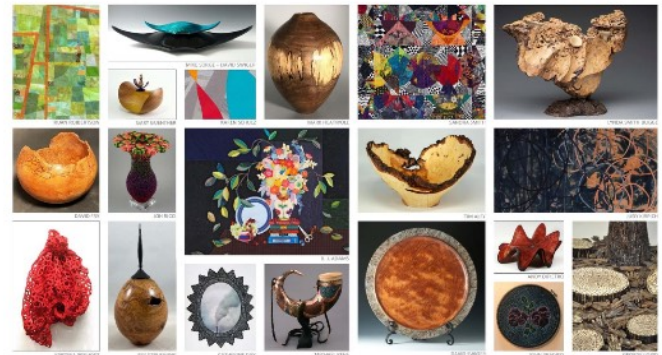
www.blackrockcenter.org

Images of all the artworks selected by the jurors will be included in the **“Handcrafted: Fiber Art + Turned Wood”** Online Exhibition. Each artwork will be listed for sale at the sales price originally assigned. However, if an artwork has already been sold, or is otherwise unavailable for sale, it will be listed as “NFS” (“Not For Sale”).

I will be sending out a Consignment Contract to each exhibiting artist later this week with the dates for the Online Exhibit. Please let me know if your work has been sold or is otherwise unavailable for sale.

HANDCRAFTED FIBER ART + TURNED WOOD

REGIONAL JURIED EXHIBITION PRESENTING WORKS BY 47 ARTISTS & FINE CRAFT ARTISANS



DIRECT LINKS TO ONLINE PHOTOS - (For your viewing pleasure)

Note: All photo albums are captioned. Every photo has a caption. Depending on your platform, to see the captions look in the upper right. You should click or tap the circled "i" (which stands for "information") or the three vertical dots and then select "information" from that menu. Enjoy.

MCW Oct. '20 Remote Gallery: <https://photos.app.goo.gl/jPHpkBfUyuiztVPU8>

MCW Oct. '20 Program: <https://photos.app.goo.gl/uxSJadtAG9igb9G7A>

Future Programs:

***AT THIS TIME ALL FUTURE LIVE MEETINGS ARE ON HOLD.
Hopefully we will be able to have these speakers in the future***

Future Programs – Looking Ahead (William Flint)

If you have suggestions for future demonstrators, or would consider demonstrating yourself, please contact our Program Chairman, William Flint

November 12, November 2020 - John Beaver - www.johnbeaver.net

December 10, November 2020 - Emiliano Achaval - www.hawaiiankoaturner.com

January 2021

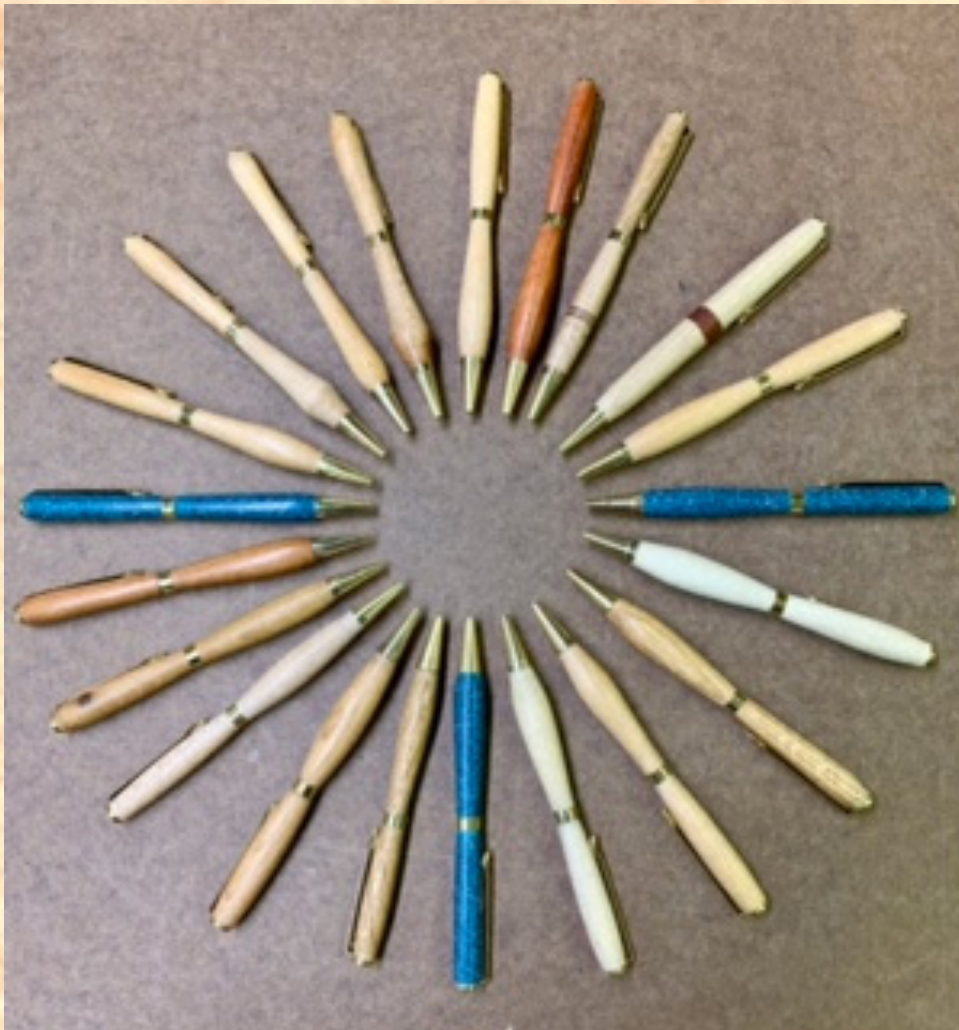
MCW Critique



2021 Annual Membership fees are due – new online payment options [here!](#)

Show & Tell Gallery - October 2020

From our virtual meeting in October, the following pieces were shown online.
Thanks to all those who participated.



Bob Browning - "Another batch of pens for



Richard Webster - bowl - 4" x 12" [spalted maple]



Bill Long "From Water to Wine to Shape and Shine" - urn - 4.75" x 3/75" [spalted maple burl]
- finished with Watco Danish Oil, U Beaut EEE Ultra Shine, and Simoniz carnauba wax -
before and after, completed and finished by Gary Guenther



Bill Long "From Water to Wine to Shape and Shine" - urn - 4.75" x 3/75" [spalted maple burl] finished with Watco Danish Oil, U Beaut EEE Ultra Shine, and Simoniz carnauba wax





Gary Guenther "Upstairs Downstairs" - bark-edge oval shallow bowl - 2.25" x 8.25" x 4.5" [white oak] ammonia fumed; bottom: Watco Danish Oil; top: TransTint dyes, acrylic spray, black patinating wax, paste wax





Gary Guenther "DRL" - sphere - 2.38" diameter [spalted hickory] brass brush, wood bleach, TransTint dyes, spray acrylic, Jolie gilding wax, paste wax. A good use for one-quarter of a cracked bowl blank.



Joe Barnard - box - 8" x 2.75" [spalted maple hollow body, maple lid/finial and foot] dyed with a variety of colors for interest.



Joe Barnard - holiday tree ornament - 6" x 2.75" [spalted maple] hollow body dyed with a variety of colors for interest.



Ken Lobo - goblet - 7.5" x 4" [sapele] router carved; finished with lacquer.



Ken Lobo - end-grain box - 5" x 3" [walnut] embellished with a router plunge button



Ken Lobo - end-grain box - 5" x 3" [walnut,
inlaid maple]; finished with poly

Tim Aley - natural-edge bowl with lichen - 2" x 6" [southern red oak]





Tim Aley - natural-edge bowl with lichen - 2" x 6" [southern red oak]



Tim Aley - plate - 1" x 10" [maple]



Tim Aley - acorn ornament with nest/egg inside - 3" x 1" [walnut, shavings, acrylic egg]



Tim Aley - acorn ornament w/ burned, painted, lime waxed cap - 3" x 1" [walnut, cherry, acrylic paint, liming wax]



Tim Aley - acorn ornament - 3" x 1" [maple, cherry, pyrography]

Jeff Struewing - Takoma Artery display:

- 1) bark-edge bowl - 3.5" x 7" [cherry];
- 2) pepper grinder - 8" x 2" [spalted maple];
- 3) hollow form with threaded finial - 5" x 3.5" [cherry burl];
- 4) bud vase - 6" x 2" [unknown burl]



Jeff Struewing -
utensil holder,
bark on - 8" x
6.5" [sycamore]



CLICK IT – Web Site of the Month (Gary Guenther)

A recommendation of a link I believe to be worth your time:

*This month's Click It and Video View articles will both be dedicated to **Merryll Saylan**, one of woodturnings pioneers.*

I've been a fan for a long time. I personally identify with her style – I love what she does. I first learned about Merryll when she was scheduled to discuss texture and color in the 2009 “InGrained – Women and Wood Art” Symposium in Richmond. Unfortunately, she was forced to drop out of the program due to medical problems, but her spot was taken by a local turner named Barbara Dill. That was Barbara's first “big audience”, and I think you'll all agree she made the most of it! That was the occasion when I first met Barbara. But this is about Merryll...

Merryll came to my attention again recently as she was highlighted by the AAW Women in Turning (WIT) group with an engaging, hour-long web interview. See it below in Video View. I won't take your time here with too many facts up front, because the information is all in the links below. Prepare to be impressed; jump in and learn and enjoy.

Merryll has a modest website at <http://www.merryllsaylan.com/> where you can begin to learn about her, but she is, herself, modest, and others, below, do a more-detailed job of reporting her many accomplishments.



There is even a Wiki page for her, where some basic biographical information is presented. https://en.wikipedia.org/wiki/Merryll_Saylan It notes that In 1986, she became a member of the newly-established AAW and would serve as the President of its Board from 1995 to 1996. It also points out that she was a pioneer in the use of texture and color when most woodworkers and woodturners were celebrating the “natural look”. She came in with an MA in Studio Art, and, needless to say, she was one of the very first women in woodturning.

As with a number of the turners I have highlighted in these pages this year, she is an AAW POP Award Winner – in 2009. <https://www.woodturner.org/common/Uploaded%20files/POPMeritAward/2009Saylan.pdf>

The excellent article is available in the Summer 2009 issue of *American Woodturner*, pp. 53-57.

AAW also included her in one of their 30th Anniversary Profiles – she is member #377 -- that means she was there at the very beginning. This is a great article, not to be missed.

<https://www.woodturner.org/common/Uploaded%20files/MemberProfiles/20160317Saylan.pdf>

The Center for Art in Wood (C4AW) did a “This is Your Life” spot on her:

<https://www.youtube.com/watch?v=W9a5sMoe7B0> Merryll was an artist-in-residence in the 1997 International Turning Exchange (ITE) program at the then Woodturning Center (now C4AW).

She is in the Smithsonian Archives of American Art -- they recorded her oral history (5:00 excerpt).

<https://www.aaa.si.edu/collections/interviews/oral-history-interview-merryll-saylan-13576>

You can read the transcript here. It's quite long and detailed – for the real aficionado.

<https://www.aaa.si.edu/collections/interviews/oral-history-interview-merryll-saylan-13576#transcript>

Needless to say, her work is in many museums and private collections. I could go on, but I think you get the picture. Below, in Video View links, you can watch her in person, in her own words.



VIDEO VIEW – Video of the Month (Gary Guenther)

Online woodturning action for your viewing pleasure

Now that you have read about Merryll, watch her in action:

Small Bowl Design and Finish for Rocky Mountain Woodturners

<https://www.youtube.com/watch?v=LZ5YhmynLoU> (1:19:37)

The latest episode of the “WIT Presents” series: AAW WIT webinar of October 2020 (59:55)

<https://www.woodturner.org/Woodturner/WIT/WIT-Presents--Merryll-Saylan--October-10--2020.aspx>



Treasury report - August 2020 (Tim Aley)

Begining Balance	\$3,816.83			
October Income 2020			October Expenses 2020	
Membership 2020	\$88.12		Membership Paypal fee	\$2.74
Tree Spirits fee			Tree Spirits paypal fee	\$0.00
			Demonstrator	\$300.00
Demo Fee	<u>\$130.00</u>		Paypal fee Demo	<u>\$8.46</u>
Total	\$218.12		Total	\$311.20
Ending Balance	\$3723.75			

MCW Elections

President Bob mentioned in his remarks that in December elections are coming. And he writes:

“Eight of our current officers have said that they would be willing to continue in their roles, and they have all done a superb job. Our program chair has indicated he will not be up for re-election, so there will not be an incumbent running for that position. However, all that being said, it merely means that the current officers have self-nominated for 2021.”

So think about it we NEED a program director, otherwise there will be no programs! There is also the possibility of 2 people sharing the job, so if there is someone you feel you could work together with, nominate yourselves.

Editor

Members in the news

Tim Aley & Paul Sandler	Tim Aley And Paul Sandler are members of the Gaithersburg Artist Collective. We are a co-op of artists in many mediums. Our current show is at a pop-up gallery at 26-A Grand Corner Avenue, Gaithersburg, MD 20878.
Paul Sandler	I also have some utility items for sale at the Something Earthy Pottery Studio at 24410 Hipsley Mill Road, Laytonsville, MD 20882, and I have submitted to the Black Rock show, but haven't heard back as yet.
Tim Aley	Showing in the Chesapeake Montpelier Mansion show
William Flint	I also sell on Etsy. My shop name is UFOKing, the direct link is https://www.etsy.com/shop/UFOKing
Mike Colella	Selling at "The Family Room" Outdoor Market in Laytonsville - Nov 21 10-4. And will be part of Countryside Artisans Dec. 4, 5, 6 at the Art of Fire Glassblowing studio in Laytonsville.
Joe Barnard	is participating in the Glen Echo Online Art Market. His work has been placed in a "Sculpture" category. https://glenechoparkartmarket.square.site/shop/9
Jeff Struewing	Pieces in 2 display windows for Takoma_ARTery project (https://www.instagram.com/takoma_artery/?hl=en)

2021 Annual Membership fees are due – new online payment options [here!](#)





AAW has been running Voices, a video series of conversations on a variety of woodturning topics, available to AAW members. The notice of the posting of the final three segments is below.

As I looked at the information on the website, it was good (but not surprising) to see that three of our special friends and members helped make this series a reality. The list of sponsors includes friend Fleur Bresler, and friends and members Jerome Kaplan and Stan Wellborn.

[This video series has been made possible thanks to the generous support of the following members: Jeffrey Bernstein and Judith Chernoff, Ronald Bishop, Fleur Bresler, David Ellsworth, Harvey Fein, Richard Hogue, Jerome Kaplan, Dale Larson, Craig Lofton, Daniel Quackenbush, David and Ruth Waterbury, and Stan Wellborn.]

**Watch Live Demonstrations Online:
Check out AAW's new
Remote Demonstration Calendar!**

<https://www.woodturner.org/AAW/HLCommunity/Community-Portal.aspx>



Maker Photo
Gallery

<https://www.woodturner.org/AAWGallery/Gallery.aspx>

Woodturning Resources
Explore!

<https://www.woodturner.org/Woodturner/Join-Pages/Member-Benefits-and-Services.aspx>



World Connections - Links and other noteworthy places.

This page will be dedicated to useful and noteworthy links, Feel free to email me with suggestions: michaeljcolella@gmail.com

AAW: <https://www.woodturner.org/>

Arrowmont: <https://www.arrowmont.org/>

Women In Turning: <https://www.woodturner.org/?page=WIT>

The Woodworkers Club: [The Woodworkers Club](#)

MCW Facebook page: <https://www.facebook.com/groups/194941367515051>

AAW Photo Gallery: <http://www.aawforum.org/community/index.php?media/>

Worth checking out to see some amazing work.

Mark Supok: <https://www.marksupikco.com/>

AAW Members Gallery

Wheel Of Delicacy "Butterfly Garden"



Michael Alguire 2020 Size H: 6 in W: 9 in D: 7.5 in Available for Purchase Second in my series wheels of delicacy, I love the effect this gives you , so many different views all from the same piece , the original idea came from a bent chain link. the real challenge after making the first one was to see If I could replicate it, and well it turned out great. turned cut and reassembled . the wood is maple faber castel markers for the color

Chapter Positions Contacts

Updated 10-5-20

President	Bob Anderson	robert.anderson4@verizon.net	301-270-6005
Vice President	Jeff Gilbert	jmgilbert3@verizon.net	301-460-6928
Secretary	Gary Guenther	gary.guenther@iname.com	301-384-7594
Treasurer	Tim Aley	taley16922@aol.com	301-869-6983
Program Chair	William Flint	wt_eff@verizon.net	301-379-2046
Membership Chair	Steve Drake	skdjmbd@gmail.com	301-208-8265
Newsletter Editor	Mike Colella	michael.j.colella@gmail.com	301-520-9195
Webmaster	Jeff Struewing	jeff@struewing.us	240-988-6422
President Emeritus	Ellen Davis	ellen@twistedtreedesign.com	301-728-5505

Volunteers

Wounded Warrior Support Program Director	Don Van Ryk
Skills Enhancement Program Director	Steve Haddix, Duane Schmidt assistant
Public Library Exhibit Committee	Joe Barnard, Mary Beardsley assistant
Beads of Courage Program Director	Stephen Price
Turning Works Program Director	Ellen Davis
Montgomery County Ag Fair Program Director	Tim Aley, Paul Sandler (assistant)
Turn for Troops Project Leader	Roman Steichen
Pen Skills Enhancement Program Director	Roman Steichen
Lending Librarian	John Laffan
Videography	Joe Stout, Joe Barnard, Joe Mosli
Gallery Photography	Mike Colella
Candid Photography and Web Albums	Tim Aley, Gary Guenther, Mike Colella
Show Tell & Ask Leader	Mike Colella
Show Tell & Ask Recording and Trucking	Richard Webster and Paul Sandler
Demo Fee Collection	Bob Grudberg
Setup Committee	Paul Sandler, Jeff Struewing
Clean-Up Committee	Paul Simon, Paul Sandler
Discount Deacon	Steve Drake
Bring Back Challenge Ticket Giver	Bob Grudberg
Activities Arranger	Tim Aley
Backup Treasurer	Ellen Davis
Backup Webmaster	Stephen Price
Backup Newsletter Editor	Mike Gerecht
Backup Secretary	Steve Drake

MCW Resources

Our Hosts: Our most important resource is our space. We are deeply indebted to our hosts, [The Woodworkers Club](#), for their continuing support in sharing their facility with us. Please give Amy, Chris, Matt, and Ralph your individual expressions of appreciation, both verbally and with your wallets. If you need something, they will get it for you, either off the shelves or from the catalog – with no shipping charge. Please help support them.

MCW Hands-on Mentoring Program: Hands-on mentoring is one of the most effective ways of learning turning techniques, tool use, and safety. We all have unique knowledge and ideas to impart. We encourage all Members to sign up to share a few hours of their time and knowledge at the lathe with each other, on a peer-to-peer basis, either in their homes or at Skills Enhancement sessions. We particularly encourage our new Members and beginners to use this opportunity to learn techniques and safety. Please let Ellen Davis at Ellen@TwistedTreeDesign.com know if you would like to participate.

Skills Enhancement: Once a month, we have an open lathe session at WWC, either on Thursday's before the meeting or on the Sundays after the Meetings, under the guidance of Steve Haddix. Please check the Newsletter and Web Site Calendars for monthly dates and reserve a limited slot in advance with Steve Haddix. Everyone shares skills and information, and its lots of fun.

MCW Facebook Group: MCW has a private Facebook Group. Use it to post pictures of your work, ask questions, check out upcoming events, and it provides another venue for our members to get to know each other better. Go to <https://www.facebook.com/groups/194941367515051/> and request to be added to the group.

MCW Lending Library: Books and DVDs are available for borrowing. We have a great selection of video demonstrations and instructional materials from many top professional turners. If you missed a Meeting and would like to see the Program, you can check out the DVD. Please sign the form to check them out from John Laffan. If you have titles out, please return them promptly. There is no charge for this service.

Silent Auction: Not everyone has access to a chainsaw or a band saw, which makes it nice to have access to reasonably-priced, properly-sized turning blanks. Please bring your 'road kill' to share with other Members.

Discounts: Steve Drake has assembled a selection of retailers who provide MCW Members with monetary discounts. First and foremost, of course, is the Woodworkers Club, but we have a number of others too. Please check out the list of participating merchants on the Web Site or at the end of each Newsletter.

Web Site: <http://montgomerycountywoodturners.org> Thanks to Webmaster Jeff Struewing we have an outstanding Web Site.

Newsletters: The MCW Newsletter Archive, accessible on the website, is a tremendous resource, containing the complete history of all MCW programs and activities from day one, as seen on a monthly basis through the years. All past issues back to Volume 1, Issue 1 in 2007 are available at <http://montgomerycountywoodturners.org/newsletters/>



Member Discounts

Woodworkers Club Rockville, Maryland (www.woodworkersclub.com). The Woodworkers Club, a Woodcraft affiliate, offers MCW Members a 10% rebate on all regularly priced items. After reaching certain plateaus of spending, you will become eligible for a rebate which you will receive by email and is good for 3 months. Non-qualifying items are power tools, items already on sale, gift cards, and items from companies that prohibit discounting (Festool, SawStop, Leigh, and a couple others). Our relationship with Woodworkers Club is very synergistic and important to us, and I encourage you to make your woodturning and woodworking purchases from them. If they don't have something in the store that's in the Woodcraft catalog or on their web site, they will get it for you, and you can save on shipping by picking it up at the store.

Exotic Lumber, Inc. Frederick, Maryland (<http://www.exoticlumber.com/>) With over 130 species in stock, Exotic Lumber has one of the widest selections available on the East Coast. We offer a 10% discount to MCW Members with membership badge. We have warehouse locations in Frederick and Annapolis, where you are welcome to select from our extensive selection of turning blocks.



Craft Supplies USA (www.woodturnerscatalog.com) is a family-owned and operated business serving the woodturning community. Individual MCW Members can save 10% on all finishes & disc abrasives -- just mention "Montgomery County Woodturners" and save, all year long.



Hartville Tool (www.hartvilletool.com) is a nationwide retailer of general and specialized tools for woodworking and home improvement. They offer free shipping to all. If you have accepted the MCW offer to "opt in" to be a member of the Hartville Tool Club, you will get a 15% discount on all tools (excluding sale items, gift cards, special orders, and Festool Products).



North Woods Figured Wood (www.nwfiguredwoods.com) North Woods is a multi-generational family-owned supplier of wood and wood blanks specifically selected with the woodturner in mind. They specialize in Pacific Coast native species of trees and have sizes from single pen blanks up to 1,500 lb. whole burls. With 20+ species in stock, there is something for everyone. Members get a 15% discount by mentioning their MCW membership during a phone order or by entering "WOODTURNERS" as a coupon code during online ordering.





Gary Guenther

"DRL" - sphere - 2.38" diameter [spalted hickory] brass brush, wood bleach, TransTint dyes, spray acrylic, Jolie gilding wax, paste wax.