



OFFICIAL CHAPTER  
**AAW**  
AMERICAN ASSOCIATION  
OF WOODTURNERS

### MEETING LOCATION

Your own home,  
in that favorite easy chair,  
or the living room couch.

### MEETING AGENDA

6:30 - 7:00 - Log into Zoom, social time  
7:00-7:15 - Business meeting  
7:15-7:45 - Show, Tell & Ask  
7:45-9:15 - Program  
9:15-Chat with Demonstrator

**Notice to all, submissions for TJ must be in by 25th of the month.**

**April 8th, 2021**  
**Robin Costelle – Two-piece Hollow Form**  
**Zoom session opens at 6:30**

### Contents

Evening Program	1
Editors Corner	3
Presidents Message	4
Minutes April Virtual Meeting	5
Future Programs	8
Direct links to photos	10
Click It & Video View	11
Show & Tell	12
Treasures Report	25
Members in The News	25
AAW Focus	26
Women In Turning	27
Links	28
Remote Connections	29
Member Contacts	30
MCW Resources	31
Member Discounts	32
Tailstock	33

**Robin Costelle** is an amateur, hobbyist woodturner, just like us. He has been woodturning since 2003 and has run the gamut from pens and bowls and boxes to large, complex segmented forms and sculptures. Speaking for myself, I can say I've long been a fan of his elegant finials and bark-edge pedestal boxes and collected eight different "fave"



images for my “Design” folder over the years from 2007–2010. His forms are impeccable. I was very excited to hear from a friend that he is doing IRDs now and to be able to chat with him and to snag his services for our April demo.



Robin turns, teaches, and demonstrates in and around his home state of Kentucky, but now he’s branching out (yes, that’s a tree joke) with several IRDs. Besides woodturning, Robin also dabbles in pottery and building wooden musical instruments, outfitting fly rods, and crafting wood

fishing nets. You can see a lot of these activities and projects on his homey website

here: <http://www.robincostelle.com/>

Robin lives on a small farm outside the town of Fern Creek, near Louisville, in north-central Kentucky along with his wife, Connie, and three children.

Yes, those hollow forms in the photo are made in two pieces, believe it, and he’s going to show us the techniques, tricks and tips for doing that. Cool, eh? Shades of Mark Gardner. This is a very accessible project for beginners and skilled turners alike. No specialized or expensive hollowing tools and systems are required. Robin talks about grain matching, creating pleasing forms, tools, and sharpening.

We’ll learn together and come away with a new approach to use on our own projects. Truth in advertising: we’ll have to save that finial for another session.



Please put April 8 on your calendars and plan to join us.



## Editor's Corner (Mike Colella)

### SELF Show & Tell

For our virtual Show & Tell, we will limit people to 2 turnings. **Submission deadline, Noon of meeting day**, please email your images to me ( [michael.j.colella@gmail.com](mailto:michael.j.colella@gmail.com)), **please "Attach" the images**, do not imbed them in the email. Include the following information for each piece:

- Your name
- Title (if any), Size
- Wood species, Finish notes
- Any other information you might want to add.

I will prepare all the images to show, and when your piece comes up you will be allowed to open your mike and discuss your piece while it is being showed. Please keep your comments to 2 minutes.

*Please join in.*

### **April 8th, 2021 Remote Meeting Information**

Our meeting will be conducted over ZOOM. You will receive the ZOOM meeting information at least 24 hours before the meeting via email from Gary Guenther, Program chair. The meeting will begin at 7pm, but the ZOOM meeting will be active at 6:30 for system testing, chat with friends, and fellowship! Sign in, mute your microphone unless speaking, and get comfortable!

#### Agenda:

7:00	President's Remarks and abbreviated business meeting	Bob Anderson
7:15	Show Tell and Ask	Mike Colella
7:45	Demonstration:	Robin Costelle

Meeting Notes: Get involved, ask, share, and chat!

**Please mute your microphone unless you are speaking**

Test your Zoom settings before the meeting at <https://zoom.us/test?zcid=1231>

Zoom Support Center: <https://support.zoom.us/hc/en-us>

To help defray the cost of the demonstration, you are encouraged to chip in using our secure PayPal link on the MCW website. We suggest a contribution of at least \$5. You do not have to sign up for PayPal to send money. Click on the link or navigate from the "Meetings" page.

<https://montgomerycountywoodturners.org/demo-fee/>





## President's Perspective - Bob Anderson

My wife and I, and many of our members, have now received our full COVID vaccines. Cities and states are cautiously re-opening in some ways, but the CDC reports troubling spikes in some areas. In other words, there may be light at the end of the tunnel, but the tunnel is still of some length.

Many of the things that we took for granted before the pandemic, though, may have been irrevocably changed or lost. For instance, we knew that teaching was a pretty secure job, since it couldn't be farmed out to a foreign country, as manufacturing textiles was - or so we thought. During the pandemic, though, teachers taught Zoom classes online; the teachers and students no longer had to be in the same room (or school or city or even country). Many office worker no longer have a 15 or 30 or longer minute commute as they can work from home and apparently produce the same amount (or more) working in their pajamas from the dining room table.

So, what does all this change mean for a return to our MCW meetings? Will our monthly endeavors be the same as before? We've found that, while perhaps not optimal, our interactive remote demos (IRDs) have bridged the gap in many ways; though IRDs are not the same as being together, holding each other's bowls in our hands, and seeing the chips fly. What will we do for members who may not feel comfortable coming back to a crowded room? It's always important to remember that our club exists to serve all of our members.

We need your ideas on the best ways to proceed so that we can plan for a return which is certainly some months (or 2022 or beyond?) into the future. But any attempt at absolute timing is certainly a fool's game, impossible to predict. We'd also like to see you at our monthly IRD meetings and the intermittent Zoom get togethers we are having. It's always good to get ideas and tips from each other, and it's been great to shoot the breeze about turning at these "meetings".

Let us know what keeps you away, if you haven't been joining us, and what brings you to our IRD meetings?

So, while we've been holding our own, so to speak, while the future isn't quite now, it is coming. Let us know how you would like to shape it.

Bob



## **MCW March 11, 2021 Meeting Minutes**

The March 11, 2021 virtual meeting of the Montgomery County Woodturners (MCW) was called to order at 7:01pm with 20 members present and President Robert Anderson presiding. There were no guests or new members.

**Bring back challenge** is suspended due to the Covid 19 pandemic.

The **2021 membership dues** are owed, and we would appreciate your paying as soon as possible. They are \$25 per individual and \$35 per family. Per club policy, *members who have not paid by mid-April will be deleted from the membership roll and lose club benefits.* However, *members unable to pay because of economic hardship are excused from paying* but should contact President Anderson ([Robert.anderson4@verizon.net](mailto:Robert.anderson4@verizon.net)) or Steve Drake ([skdjmbd@gmail.com](mailto:skdjmbd@gmail.com)), MCW membership chair, to let them know. This information will be kept in the strictest confidence.

The club is looking to both keep all members and recruit new ones. If you know of turners who are not club members, or of folks who may be interested in joining, please invite them to attend a meeting.

The American Association of Woodturners (AAW) has decided to cancel the in-person component of its annual symposium, which was scheduled to be held in Omaha, NE this summer. An online meeting will be offered in its stead. AAW executive director, Phil McDonald announced the change on the their website. The agenda has yet to be announced

**Women in Turning (WIT)** has announced its 2021 virtual exchange program. In essence, teams of women artists will collaborate on a piece, using wood and other media, with both national and international individuals participating. Artists from all crafts -- not just turning -- are encouraged to participate. Registration is open now through April 11, and one does not have to be a member to participate.

The **Creative Crafts Council** biennial show is on for this year at the Strathmore Mansion on Rockville Pike, Rockville, MD. The show will run from Saturday, May 29 through Saturday, July 24<sup>th</sup>. The application process has been completed. Good luck to all our members who submitted pieces.

A second **MCW Hangout** will take place Thursday, March 25<sup>th</sup> beginning at 7:00 pm. This is an opportunity for club members to get together via Zoom and chat about whatever. Gary will be sending out more information closer to the date-

MCW has many great **volunteer programs**, and we have many members who help run them. While many of these are on a hiatus now due to Covid, we look forward to a more normal time when they can resume in person. There are, however, a few that we can still contribute to even during these downtimes.

# Roman Steichen ([3rdGenPenShop@gmail.com](mailto:3rdGenPenShop@gmail.com)) is in charge of the Turning for the Troops (TFT) program and once we are up and running he has offered to do pen turning for our Thursday Skills Enhancement (SEW) program. In the meantime, we do need pens turned for this current year. So if you and your lathe have some extra time, think about running off some pens. Contact Roman to get pen kits.

# Steve Price ([prices1950@yahoo.com](mailto:prices1950@yahoo.com)) runs the Beads of Courage program for the club. Once we are out of the pandemic and resume visits to kids at Children's Hospital undergoing medical procedures for which they are awarded beads for their bravery and endurance, we hope to be able to present them with containers in which to keep their beads. Making some boxes now to have available for then would be appreciated.

# Ellen Davis ([ellen@twistedtreedesign.com](mailto:ellen@twistedtreedesign.com)) coordinates Turning Works, which provides bowls for local charities. Making a few bowls for the shelf which will then be available once things are back to normal would be great.

In addition to these programs, there are likely others MCW could be involved in, and in that regard anyone else who wants to suggest other charitable endeavors, or is interested in taking a more active role in the MCW volunteer activities, should contact President Anderson.

Many members **sell and display their work**. They do so at various venues but often the rest of us don't know about them. If you are displaying your work, please let us know so we can make note of it in the monthly *Turning Journal*. That way we can support each other in our artistic endeavors. To get the word into the *Turning Journal*, notify Mike Colella ([Michael.j.colella@gmail.com](mailto:Michael.j.colella@gmail.com)).

We have quite a few members with excellent skills and solid techniques who can demonstrate for us and other local clubs. We are assembling a list of **local talent** from clubs in the area. If you are interested in doing demos for MCW or other nearby clubs, please email President Anderson or Mike Colella. This is a way to get your artistic talent known, and a means for our club to have access to a pool of quality area turners.

During our current pandemic crisis, **our in-person programs and events remain canceled**. This includes SEW and our in-person meetings at the Woodworkers Club. All are scheduled to resume once the pandemic abates. Hopefully, members getting vaccinated will help speed the way to in-person activities. When we do come together again, the space will be new: it is the same size and shape as the old one, but we will need new monitors and the meeting space needs to be configured. Some of us plan a visit to the new space and anyone else interested in coming along should let President Anderson know

**Public Library Exhibits** remain closed during the pandemic.

**Wounded Warriors** club sponsorship has been suspended until after the Covid crisis.

**Facebook** link for MCW is [https:// www.facebook.com/groups/194941367515051/](https://www.facebook.com/groups/194941367515051/). Go there to view posts or join the MCW group.

On behalf of the **Woodworkers Club** and Woodcraft, Amy tells us that this month the pressure pot for resin casting is on sale for the first time at a 10% discount. Alumilite casting resin is also on sale to go along with it. There are plenty of pressure pots in stock. So if you are considering such a purchase, you know where to go. One additional item, Woodcraft is having a resin product contest. For more information, go to the Woodcraft contest website at <https://www.woodcraft.com/pages/contest> .

Due to the pandemic, our **meetings** will continue to be virtual. Robin Costell will be our April demonstrator and will be showing us his work on hollow forms.

**Tonight's demonstrator is Phil Rose**, who will show us ways to work with burls. For more information on his unique work, you can visit Phil's webpage at Dragon's Rose Studio and check out last month's *Turning Journal*.

**Show and Tell** tonight featured turnings by Gary Guenther, Jeff Struewing, Joe Barnard, Ken Lobo, Roman Steichen, Tim Aley, and Mike Colella. Thank you for your fine contributions and others are encouraged to participate as well.

The meeting adjourned at 9:40 PM.

Respectfully submitted,  
Mary Aronson  
(Secretary)



## **MCW 2021 FUTURE REMOTE PROGRAMS** (Gary Guenther)

### **Thoughts from the Program Chair as a *Preface* to introduce some of this year's Future Programs.**

Why do we watch woodturning demonstrations? What do we look for and look at when we watch a demo? What's more important, the journey or the destination? I will make a firm stand and say it's the journey, and that will be my emphasis in 2021 as MCW Program Chair. A nice end product is fun and worthy, but what I want to learn is how to make one, and that's in the details. Learning the tools and techniques is what is important. What I want the demonstrators to show is safety, holdings on the lathe, and tool use. The end product is a welcome bonus.

My plan for 2021 is to emphasize woodturning – making chips on the lathe – interesting projects by good teachers while, importantly, demonstrating the basics and esoterica of holdings and tool use. My goal is to provide valuable and meaningful content for all levels from Beginner to Advanced. Note that I have included two Saturday programs from UK, necessitated by the time difference. The international woodturning community has responded splendidly to the pandemic by adding worldwide content, and we're joining in.



### **Thursday, May 6, 2021 (7:00 p.m.) – Kirk DeHeer – Square Bowl with a Lid**

**Kirk DeHeer** is a well-known woodturner from Utah who has been a Resident Instructor at Craft Supplies USA in the Dale L Nish School of Woodturning for more than 15 years. He has extensive knowledge of woodturning tools, equipment, and turning techniques that will enhance any woodturner's ability level. A top-rated and personable instructor, Kirk emphasizes fundamentals including sharpening and tool techniques, giving students a firm foundation upon which to improve. He is currently creating a series of video demonstrations for CSUSA under the label *Woodturning 101*. He is also an instructor at John C. Campbell Folk School.

In this "square bowl with a lid" demo, Kirk shows the tools and cuts to get an exceptional surface off the tool. The lid comes from the same blank as the bowl using the McNaughton coring tool.

### **Thursday, June 10, 2021 (7:00 p.m.) – HangOut- III – Just Us Having Fun**

This third edition of *HangOut* will be on our normal June meeting day and time to hold the place of our later June meeting and demo that will occur on Saturday, June 26 at 1:00 p.m. because our June demonstrator is in England, and his time runs five hours later than ours.

We miss the camaraderie and socializing and sharing of our past live meetings, but we can still Hang Out together via Zoom from the comfort of our own homes, with our fave bevs in hand. Mike will be the Zoom host, as always. Come when you can; stay as long as you like. Just click in and Hang Out. We will chat. We will share our experiences. We will ask and answer questions. We can give tips. We can show what we are working on directly from our own hot hands. We can joke



and laugh and catch up with each other. It's just free-form social time with the woodturning friends you've been missing, and we encourage you all to join in the fun.

### **Saturday, June 26, 2021 (1:00 p.m.) – Richard Findley – Box with Insert**

Richard Findley is a Registered Professional Turner and a member of The Worshipful Company of Turners. He lives in Leicestershire in the English Midlands and specializes in architectural spindles, furniture, and unique commissions for a living, but he does like to have fun on the side (side grain). He comes from a long line of woodworkers, going back at least five generations, and he has been involved in woodworking since 1996, and woodturning since 2006 when he set up The Turner's Workshop to pursue his passion for spinning wood.



I originally saw Richard on the 11/22/20 edition of Pat Carroll's *Meet the Woodturner* show. What a great choice for Pat to have him on. He was relaxed and cool, and I knew I would like to hire him. Richard later stood in for Les Thorne on short notice for the 2/25/21 Conkers Live demo, sponsored by Terry Smart and his Chestnut Products brand, and he did a brilliant job. Again, very relaxed and extremely knowledgeable and dispensing tons of great info and tips during an attention-grabbing box demo with a cabochon insert of pewter. He even poured the molten pewter! This performance convinced me that I had to hire him for a MCW IRD. I've asked him to repeat that box demo, but with the cabochon insert being made of imitation ivory instead of pewter because the pour takes more time than we have available. He was very accommodating in fitting us into his busy schedule, which was not a given, even with a long lead time.

Richard is a regular contributor to the prestigious UK magazine *Woodturning*, with over 100 articles published, and he's been on the cover twice. Here's his website: <https://turnersworkshop.co.uk/> I follow him on Instagram [https://www.instagram.com/richard\\_findley/](https://www.instagram.com/richard_findley/) Based on what I have seen, I have very high expectations for his demo for MCW.

### **Thursday, August 12, 2021 (7:00 p.m.) – Art Liestman – Lost-wood Box**

Many of you are familiar with Art's signature whimsical series (plural) of puzzle pieces and funky tea pots (like the one Phil Brown owned) and things that don't look like they were made on the lathe. This will be a treat. He's going to show us his "lost-wood" techniques where a piece of waste wood is glued in before turning and removed afterwards. In this case, his result will be a fully hollowed and lidded box that is very much not round.



### **Saturday, November 6, 2021 (1:00 p.m.) – Philip Greenwood – Bark-edge Pot**

Phil is a delight. I'm out of page – more next month.



**AAW Maker Photo Gallery:**

Robin Costelle  
Maple Burl candy dish  
Maple Burl and African Blackwood.

**DIRECT LINKS TO ONLINE PHOTOS - (For your viewing pleasure)**

Note: All photo albums are captioned. Every photo has a caption. Depending on your platform, to see the captions look in the upper right. You should click or tap the circled "i" (which stands for "information") or the three vertical dots and then select "information" from that menu. Enjoy.

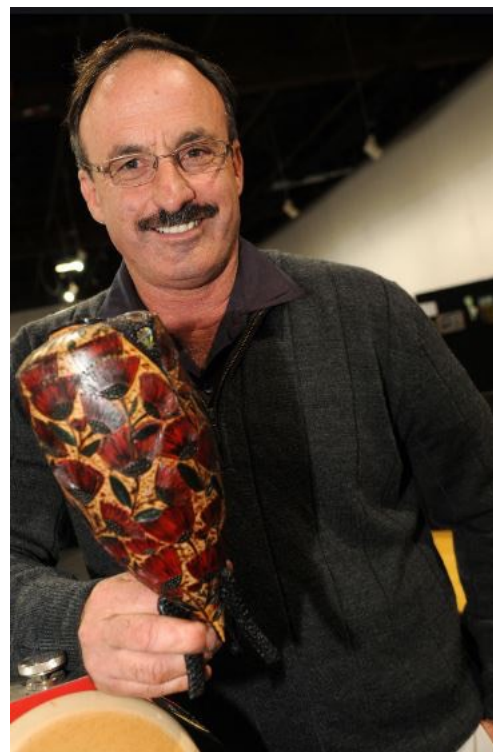
MCW March '21 Remote Gallery <https://photos.app.goo.gl/f4JrEzh2r71AuF2B8>

MCW March '21 Program – Phil Rose <https://photos.app.goo.gl/KMJR1xjrM9TMUEst9>

## **CLICK IT – Web Site of the Month** (Gary Guenther)

*A recommendation of a link I believe to be worth your time:*

**Terry Scott** is a Kiwi woodturner of some note. New Zealand is home to quite a few outstanding turners, but I dare say that when asked to name one, many people will say: “Terry Scott”. I learned of Terry many years ago on the WoW forum, and I was immediately drawn to ask if I could buy one of his incredible burl wingers “Plain Bowl #1”. (This name relates to one of the categories in the incredibly-competitive judged shows they have on the flip side of the globe.) My item of desire was already heading for a new home in Asia, but Terry allowed as how “Plain Bowl #2” was just as good and available. Red mallee burl “Plain Bowl #2”, with its outstanding natural texture and three little feet, has graced our dining room table display area ever since. Always generous, with my order Terry also included a box of cutoffs of native species, including a small burl and a couple pieces of 30,000-year-old “ancient swamp kauri”. If you’re not familiar with it, you can Google it. I note in my news feed that last month they found one that records precisely the last flip of the Earth’s magnetic poles 42,000 years ago. But I digress... Terry is a turner’s turner. He does it all, and there’s no better way to introduce you to him than to just send you to his website: <http://www.timberly.co.nz/Default> Once you get there, I recommend that you just go straight to the Gallery tab and start drooling. To say he is prolific would be the ultimate understatement. He’s also an amazing carver/burner/texturer/colorist too. He’ll tell you how he makes his manta ray wings, but he properly warns: “Don’t do this at home.” It involves cutting into mixed grain with a skew. Yikes. If you can’t find ideas here, there’s no hope. Truth in advertising – if asked, I’d say that his photos are too small and too dark, but you can still “get the idea”. Enjoy!



## **VIDEO VIEW – Video of the Month** (Gary Guenther)

*Online woodturning action for your viewing pleasure*

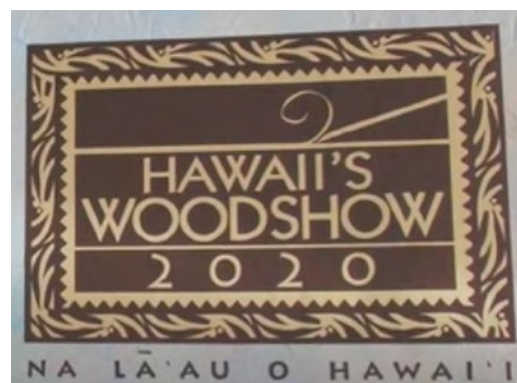
You’ve seen me recommend this show from previous years, and you’ll see me recommend it in future years. If nothing else, I’m consistent. This show is a perennial fave of mine.

2020 Hawai’i wood show video walking tour link (36:01):

<https://www.youtube.com/watch?v=mHp5XMAuA3o&feature=youtu.be>

As a bonus, here is the Opening Reception walkaround too (35:40) The artists are present with their works.

[https://www.facebook.com/watch/live/?v=359246291984995&ref=watch\\_permalink](https://www.facebook.com/watch/live/?v=359246291984995&ref=watch_permalink)





# Show, Tell & Ask Remote Gallery

## March 2021



Gary Guenther  
sphere box  
"Bigger on the Outside"  
3" diameter

spalted red maple, including pink spalt  
finished with Myland's sanding sealer  
(lacquer) and Simoniz carnauba wax



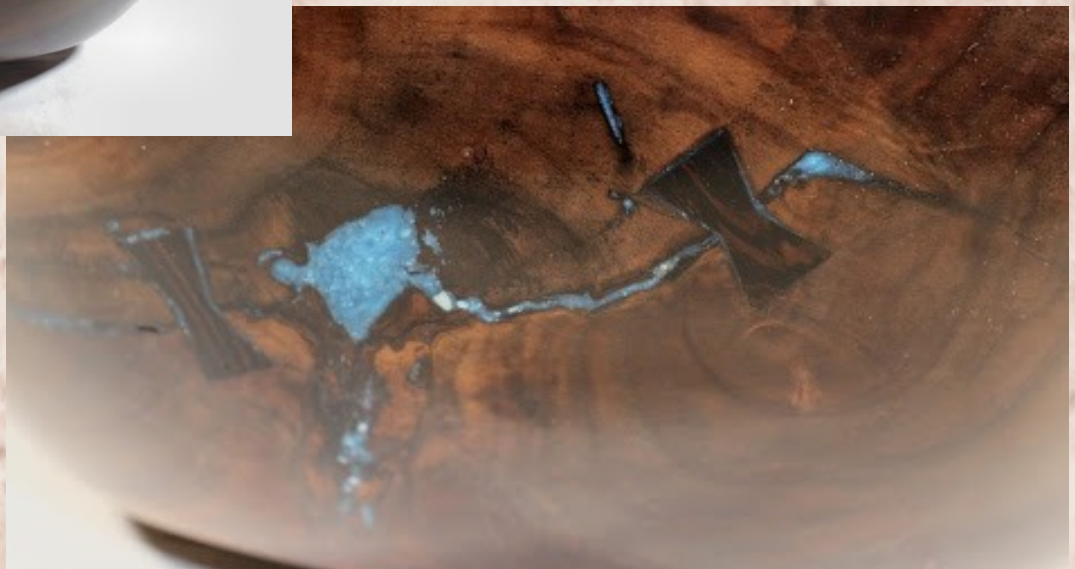


Joe Barnard  
deep salad bowl - 5.25" x 12"  
spalted maple  
General Finishes 'Wood Bowl Finish' (previously called 'Salad Bowl Finish')





Joe Barnard  
bowl- 4.25" x 11.75"  
walnut root with mineral inclusion, real turquoise and pewa patches added  
Mercury Flex cyanoacrylate





Mike Colella  
Cherry bowl  
2.5" x 11"  
red dye, OSMO oil finish



Mike Colella  
bowl 4" x 13"  
sycamore, green dye, natural interior  
OSMO oil finish





Roman Steichen  
Pens for the Troops  
oak, maple, sycamore.



Roman Steichen  
Pens for the Troops  
Acrylic





Roman Steichen  
Pens For the Troops  
oak, maple, sycamore  
and acrylic.



Jeff Struewing  
eccentric-stem goblets 5" x 2" - pear



Jeff Struewing  
banksia pod projects  
lidded box - 1.5" x 2"(d), vase - 3" x 2"(d), egg - 2.5" x 1.5"(d)



Tim Aley  
"Butterfly Bowl"  
6" x 9"  
cherry with koa butterflies  
(pewas)  
My take on a Hawai'ian









Tim Aley  
"Memories of Throwing Stones in Acer Creek"  
4" x 9" maple, blue dye in oil











Ken Lobo  
pepper and salt  
grinders  
stave construction  
note content  
indicator in top  
8" tall  
jatoba and maple  
veneer  
shellac sealer and  
poly top coat



Ken Lobo  
salt and pepper  
grinders  
stave construction  
note content  
indicator in top  
8" tall  
various woods  
shellac sealer and  
poly top coat





**Treasury report - December 2020** (Tim Aley)

Beginning Balance	\$4,207.03			
March Income 2021			March Expenses 2021	
Membership 2021	\$178.18		Membership Paypal fee	\$3.18
Lifetime Membership	\$0.00		Demonstrator	\$275.00
Demo Fee	\$120.00		Paypal fee Demo	\$6.66
Total	\$298.18		Total	\$284.84
Ending Balance	\$4,220.37			

**Members in the news**

Paul Sandler	I also have some utility items for sale at the Something Earthy Pottery Studio at 24410 Hipsley Mill Road, Laytonsville, MD 20882, and I have submitted to the Black Rock show, but haven't heard back as yet.
William Flint	I also sell on Etsy. My shop name is UFOKing, the direct link is <a href="https://www.etsy.com/shop/UFOKing">https://www.etsy.com/shop/UFOKing</a>
Jeff Struewing	Pieces in 2 display windows for Takoma_ARTery project ( <a href="https://www.instagram.com/takoma_artery/?hl=en">https://www.instagram.com/takoma_artery/?hl=en</a> )
Tim Aley & Paul Sandler	Tim Aley And Paul Sandler are members of the Gaithersburg Artist Collective. We are a co-op of artists in many mediums. Our current show is at a pop-up gallery at 26-A Grand Corner Avenue, Gaithersburg, MD 20878.
Mike Colella	Will be part of Countryside Artisan's tour April 16, 17, & 18, set up in <a href="#">Art of Fire Glass Blowing Studio</a> .



**AAW leadership has been closely monitoring the status of Covid-19 in preparation for our 35th Annual International Symposium, July 15-18, in Omaha, NE.** Above all else, our concern continues to be the health and safety of our members, demonstrators, trade show vendors, partners, and other event attendees.

**At its February meeting, the AAW Board of Directors unanimously made the essential decision to cancel the in-person 2021 AAW Symposium in Omaha.**

Based on research, risk assessment, and adherence to CDC guidelines, the Board has determined that holding a safe, high-quality, in-person event in July is not possible.

While we expected the Covid-19 pandemic to recede by July 2021, too many uncertain variables remain, including vaccine distribution and efficacy, and evolving virus variants. The Board concluded that even when following CDC and local COVID-19 transmission precautions, we cannot guarantee safety for all involved given the large number of people assembling from around the country and the world.

**While this is incredibly disappointing for all of us, we are moving ahead to create an improved AAW Virtual Symposium for 2021 and are actively planning our next in-person symposium for 2022.** You can look forward to:

- **AAW's 2021 Virtual Symposium, July 17-18, 2021**, with front-row seats from home for your safety and comfort. We will be using an enhanced virtual event software platform to offer multiple concurrent live demonstration tracks (with access after the conference to all recordings), a virtual trade show, a virtual Instant Gallery, live and silent auctions, special interest topics, drawings, and more. The only thing missing will be the handshakes and hugs from old and new woodturning friends. You will need to wait one more year for that.
- **An in-person AAW 36th Annual International Symposium, June 23-26, 2022, in Chattanooga, TN.** This large, action-packed experience marks the celebrated comeback of AAW's Symposium after a two-year virus-related hiatus. There will be plenty of demonstrations and panel discussions, a jam-packed trade show with exhibitor booths, inspiring exhibitions and Instant Gallery, auctions of turned art, charitable initiatives, networking opportunities, and more. Mark your calendars!





# 2021 WIT Virtual EXCHANGE

WIT, Women in Turning, has announced their 2021 virtual exchange program. The [AAW page for this program is here](#), and the introductory paragraphs from the WIT Virtual Exchange webpage are copied below. One addition this year is that they are calling for women across all crafts to participate.

The past years have shown us how important the EXCHANGE has become to a community of women turners in stimulating creativity, fostering collaboration, and facilitating self-confidence.

After the success of the first Virtual WIT EXCHANGE, the WIT Committee has committed to continue the program and expand it to include as many women as possible this year. We encourage all prior participants to reach out to their circle of artist friends (in any media) to consider participating in the 2021 Virtual EXCHANGE .

The WIT committee believes that introducing artists from other media into this EXCHANGE will open new avenues for creativity. At the same time, the art of woodturning will be introduced to an entirely different group of women. The Virtual EXCHANGE creates an environment which will expand awareness of woodturning beyond our current community. This exposure to different media will also foster infinite creative opportunities.

The WIT EXCHANGE welcomes women of all skill level. It is a collaborative project that will enhance skills, friendships, and self-confidence. It's designed to be hard work, but lots of FUN!

Continued on [the WIT AAW site](#)

## WIT Representative for MCW Needed!

Ellen Davis, has been our WIT rep for a number of years but now is no longer to fulfill the roll. If you are interested please contact Ellen for details, [Ellen@twistedtreedesign.com](mailto:Ellen@twistedtreedesign.com)

## World Connections - Links and other noteworthy places.

This page will be dedicated to useful and noteworthy links, Feel free to email me with suggestions: [michaeljcolella@gmail.com](mailto:michaeljcolella@gmail.com)

AAW: <https://www.woodturner.org/>

Arrowmont: <https://www.arrowmont.org/>

Women In Turning: <https://www.woodturner.org/?page=WIT>

The Woodworkers Club: [The Woodworkers Club](#)

MCW Facebook page: <https://www.facebook.com/groups/194941367515051>

AAW Photo Gallery: <http://www.aawforum.org/community/index.php?media/>

Worth checking out to see some amazing work.

Mark Supik: <https://www.marksupikco.com/>

Conkers Live: <https://chestnutproducts.co.uk/conkers-live/>

Talking Turning: <https://www.awgb.co.uk/talking-turning-zoom-sessions/>

Wood Symphony Artists: <https://www.woodsymphony.com/wood-artists>

To Be Continued.....

Note:

As we all continue to find interesting demonstrators around the world, PLEASE let me know so I can post them here for everyone else to benefit.

Be sure to check out the links Gary has provided below, which I will continue to post as long as they are still active.



## **Remote Connections** (Gary Guenther)

*One positive that has come in response to the loss of in-person camaraderie caused by the pandemic is the proliferation of new venues of free online woodturning content. A number of woodturners feeling the lack of customary togetherness are creating and participating in online venues to try to keep the community connected via interactive demonstrations, interviews, and discussion sessions. In two cases these are being assisted by corporate sponsorship. Here are five excellent examples for your selection.*

### **Conkers Live**

This is a regularly-scheduled series of free, interactive woodturning demonstrations, sponsored by Chestnut Products (which produces a variety of finishes, dyes, etc.). There is no overt advertising. The purpose is to support demonstrators and keep turners together during the lockdown. All the demonstrations are free to watch and can be accessed from this web link: <https://chestnutproducts.co.uk/conkers-live/>. It is based out of the UK and hosted by Terry Smart. It is distributed directly from their website and requires no Zoom or registration -- just tune in as you would with YouTube. Each show is a different demonstrator. They are produced in the evening UK time, which is early afternoon EST. You can subscribe to their bulletins to get updates about events and demonstrators. Future dates are Dec.14, Jan.11, Feb.4, Feb.24, March19, April12, and May 12.

### **Woodturning Live**

This regularly-scheduled series of free, interactive woodturning demonstrations, held via the Zoom platform, is sponsored by Record Power, a respected equipment maker. There is no advertising. It is hosted by Mike Davies from New Zealand with Aussie turner Theo Haralampou as the demonstrator. They are transmitted in the morning from NZ/Oz, which puts them in early evening EST. I find Theo's demonstrations to be interesting, informative, varied, and excellent. To join these educational and entertaining live sessions simply email [miked@recordpower.co.uk](mailto:miked@recordpower.co.uk) with RSVP in the subject line, and you will immediately receive your log-in code by return email.

### **Meet the Woodturner**

This regularly-scheduled series of live interviews is based in UK and hosted by Pat Carroll from Ireland. Each episode highlights the woodturning life of a well-known turner in an interactive Q&A session with questions also taken from viewers. To sign up for these Zoom sessions, email [meetthewoodturner@gmail.com](mailto:meetthewoodturner@gmail.com) and you will receive invitations.

### **Behind the Scenes**

This "occasional" show is periodically sponsored by Trent Bosch Studios and also highlights the woodturning life of a famous turner in each episode. <https://virtualwoodturningdemos.com/> These are on Zoom, and free, but registration (for \$0.00) is required. These freebies are held in conjunction with other paid IRDs sponsored by Trent. You can get on a mailing list to receive the announcements of future programs.

### **Talking Turning**

This is a regularly-scheduled series of shows sponsored by the Association of Woodturners of Great Britain (AWGB) -- their version of the AAW. The focus here is a live Zoom forum for talking about various preselected turning subjects and having Q&A during the sessions, with an hour of open-mike discussion with attendees participating. You can go here for more info: <https://www.awgb.co.uk/talking-turning-zoom-sessions/> After registering, you will receive a confirmation email containing information about joining the meeting. Register in advance to ensure you receive the email with meeting details. The meetings are at 2:30pm EST every Tuesday and Friday afternoon.



## Chapter Positions Contacts

Updated 1-4-21

President	Bob Anderson	robert.anderson4@verizon.net	301-270-6005
Vice President	Jeff Gilbert	jmgilbert3@verizon.net	301-460-6928
Secretary	Mary Aronson	mmharonson@gmail.com	202-291-0654
Treasurer	Tim Aley	taley16922@aol.com	301-869-6983
Program Chair	Gary Guenther	gary.guenther@iname.com	301-384-7594
Membership Chair	Steve Drake	skdjmbd@gmail.com	301-208-8265
Newsletter Editor	Mike Colella	michael.j.colella@gmail.com	301-942-2853
Webmaster	Jeff Struewing	jeff@struewing.us	240-988-6422
President Emeritus	Ellen Davis	ellen@twistedtreedesign.com	301-728-5505

## Volunteers

Wounded Warrior Support Program Director	Don Van Ryk
Skills Enhancement Program Director	Steve Haddix, Duane Schmidt assistant
Public Library Exhibit Committee	Joe Barnard, Mary Beardsley assistant
Beads of Courage Program Director	Stephen Price
Turning Works Program Director	Ellen Davis
Montgomery County Ag Fair Program Director	Tim Aley, Paul Sandler (assistant)
Turn for Troops Project Leader	Roman Steichen
Pen Skills Enhancement Program Director	Roman Steichen
Lending Librarian	John Laffan
Videography	Joe Stout, Joe Barnard, Joe Mosli
Gallery Photography	Mike Colella
Candid Photography and Web Albums	Tim Aley, Gary Guenther, Mike Colella
Show Tell & Ask Leader	Mike Colella
Show Tell & Ask Recording and Trucking	Richard Webster and Paul Sandler
Demo Fee Collection	Bob Grudberg
Setup Committee	Paul Sandler, Jeff Struewing
Clean-Up Committee	Paul Simon, Paul Sandler
Discount Deacon	Steve Drake
Bring Back Challenge Ticket Giver	Bob Grudberg
Activities Arranger	Tim Aley
Backup Treasurer	Ellen Davis
Backup Webmaster	Stephen Price
Backup Newsletter Editor	Mike Gerech
Backup Secretary	Steve Drake
Remote Program Local Host	Tim Aley



## MCW Resources

**Our Hosts:** Our most important resource is our space. We are deeply indebted to our hosts, [The Woodworkers Club](#), for their continuing support in sharing their facility with us. Please give Amy, Chris, Matt, and Ralph your individual expressions of appreciation, both verbally and with your wallets. If you need something, they will get it for you, either off the shelves or from the catalog – with no shipping charge. Please help support them.

**MCW Hands-on Mentoring Program:** Hands-on mentoring is one of the most effective ways of learning turning techniques, tool use, and safety. We all have unique knowledge and ideas to impart. We encourage all Members to sign up to share a few hours of their time and knowledge at the lathe with each other, on a peer-to-peer basis, either in their homes or at Skills Enhancement sessions. We particularly encourage our new Members and beginners to use this opportunity to learn techniques and safety. Please let Ellen Davis at [Ellen@TwistedTreeDesign.com](mailto:Ellen@TwistedTreeDesign.com) know if you would like to participate.

**Skills Enhancement:** Once a month, we have an open lathe session at WWC, either on Thursday's before the meeting or on the Sundays after the Meetings, under the guidance of Steve Haddix. Please check the Newsletter and Web Site Calendars for monthly dates and reserve a limited slot in advance with Steve Haddix. Everyone shares skills and information, and its lots of fun.

**MCW Facebook Group:** MCW has a private Facebook Group. Use it to post pictures of your work, ask questions, check out upcoming events, and it provides another venue for our members to get to know each other better. Go to <https://www.facebook.com/groups/194941367515051/> and request to be added to the group.

**MCW Lending Library:** Books and DVDs are available for borrowing. We have a great selection of video demonstrations and instructional materials from many top professional turners. If you missed a Meeting and would like to see the Program, you can check out the DVD. Please sign the form to check them out from John Laffan. If you have titles out, please return them promptly. There is no charge for this service.

**Silent Auction:** Not everyone has access to a chainsaw or a band saw, which makes it nice to have access to reasonably-priced, properly-sized turning blanks. Please bring your 'road kill' to share with other Members.

**Discounts:** Steve Drake has assembled a selection of retailers who provide MCW Members with monetary discounts. First and foremost, of course, is the Woodworkers Club, but we have a number of others too. Please check out the list of participating merchants on the Web Site or at the end of each Newsletter.

**Web Site:** <http://montgomerycountywoodturners.org> Thanks to Webmaster Jeff Struewing we have an outstanding Web Site.

**Newsletters:** The MCW Newsletter Archive, accessible on the website, is a tremendous resource, containing the complete history of all MCW programs and activities from day one, as seen on a monthly basis through the years. All past issues back to Volume 1, Issue 1 in 2007 are available at <http://montgomerycountywoodturners.org/newsletters/>



## Member Discounts

**Woodworkers Club Rockville, Maryland** ([www.woodworkersclub.com](http://www.woodworkersclub.com)). The Woodworkers Club, a Woodcraft affiliate, offers MCW Members a 10% rebate on all regularly priced items. After reaching certain plateaus of spending, you will become eligible for a rebate which you will receive by email and is good for 3 months. Non-qualifying items are power tools, items already on sale, gift cards, and items from companies that prohibit discounting (Festool, SawStop, Leigh, and a couple others). Our relationship with Woodworkers Club is very synergistic and important to us, and I encourage you to make your woodturning and woodworking purchases from them. If they don't have something in the store that's in the Woodcraft catalog or on their web site, they will get it for you, and you can save on shipping by picking it up at the store.

**Exotic Lumber, Inc. Frederick, Maryland** (<http://www.exoticlumber.com/>) With over 130 species in stock, Exotic Lumber has one of the widest selections available on the East Coast. We offer a 10% discount to MCW Members with membership badge. We have warehouse locations in Frederick and Annapolis, where you are welcome to select from our extensive selection of turning blocks.



**Craft Supplies USA** ([www.woodturnerscatalog.com](http://www.woodturnerscatalog.com)) is a family-owned and operated business serving the woodturning community. Individual MCW Members can save 10% on all finishes & disc abrasives -- just mention "Montgomery County Woodturners" and save, all year long.



**Hartville Tool** ([www.hartvilletool.com](http://www.hartvilletool.com)) is a nationwide retailer of general and specialized tools for woodworking and home improvement. They offer free shipping to all. If you have accepted the MCW offer to "opt in" to be a member of the Hartville Tool Club, you will get a 15% discount on all tools (excluding sale items, gift cards, special orders, and Festool Products).



**North Woods Figured Wood** ([www.nwfiguredwoods.com](http://www.nwfiguredwoods.com)) North Woods is a multi-generational family-owned supplier of wood and wood blanks specifically selected with the woodturner in mind. They specialize in Pacific Coast native species of trees and have sizes from single pen blanks up to 1,500 lb. whole burls. With 20+ species in stock, there is something for everyone. Members get a 15% discount by mentioning their MCW membership during a phone order or by entering "WOODTURNERS" as a coupon code during online ordering.







Tim Aley  
“Memories of Throwing Stones in Acer Creek  
Maple, blue dye, & oil - 4 x 9