



OFFICIAL CHAPTER
AAW
AMERICAN ASSOCIATION
OF WOODTURNERS

MEETING LOCATION

Your own home,
in that favorite easy chair,
or the living room couch.

MEETING AGENDA

6:30 - 7:00 - Log into Zoom, social time
7:00-7:15 - Business meeting
7:15-7:45 - Show, Tell & Ask
7:45-9:15 - Program
9:15-Chat with Demonstrator

Notice to all, submissions for TJ must be in by 25th of the month.

May 6th, 2021
Kirk DeHeer – Square Bowl with Lid
Zoom session opens at 6:30

Contents

Evening Program	1
Editors Corner	3
Presidents Message	4
Minutes April Virtual Meeting	5
Future Programs	7
Direct links to photos	9
Click It & Video View	10
Show & Tell	11
Smithsonian Award	23
Treasures Report	25
Members in The News	25
Wood - Cycle of Life	26
Sounds OF Silence	30
AAW Focus	31
Women In Turning	33
Links	34
Remote Connections	35
Member Contacts	36
MCW Resources	37
Member Discounts	38
Tailstock	39

Thanks to our Contributors :

Gary Guenther

Mike Colella

Kirk DeHeer

is a well-known woodturner from Utah who has been a Resident Instructor at Craft Supplies USA in the Dale L Nish School of Woodturning for more than 15 years. He has extensive knowledge of woodturning tools, equipment, and turning techniques that will enhance any woodturner's ability level. A top-rated and personable instructor, Kirk emphasizes fundamentals including sharpening and tool techniques, giving students a firm foundation upon which to improve. He is currently creating a



series of video demonstrations for CSUSA under the label *Woodturning 101*. He is also an instructor at John C. Campbell Folk School.

In his classes, Kirk covers fundamentals of cutting (shearing vs. scraping), tool techniques (the how and why of making tools perform properly, variations on cutting techniques for optimum results), woodturning mastery (improving overall speed, technique and methods), and basic elements of design (exploring the fundamentals of form and function).



In this “square bowl with a lid” demo, Kirk shows the tools and cuts to get an exceptional surface off the tool. The lid comes from the same blank as the bowl using the McNaughton coring tool.

Please put Thursday evening, May 6, on your calendars and plan to join us.

Editor's Corner (Mike Colella)

SELF Show & Tell

For our virtual Show & Tell, we will limit people to 2 turnings. **Submission deadline, Noon of meeting day**, please email your images to me (michael.j.colella@gmail.com), **please "Attach" the images**, do not imbed them in the email. Include the following information for each piece:

- Your name
- Title (if any), Size
- Wood species, Finish notes
- Any other information you might want to add.

I will prepare all the images to show, and when your piece comes up you will be allowed to open your mike and discuss your piece while it is being showed. Please keep your comments to 2 minutes.

Please join in.

MAY 6th, 2021 Remote Meeting Information

Our meeting will be conducted over ZOOM. You will receive the ZOOM meeting information at least 24 hours before the meeting via email from Gary Guenther, Program chair. The meeting will begin at 7pm, but the ZOOM meeting will be active at 6:30 for system testing, chat with friends, and fellowship! Sign in, mute your microphone unless speaking, and get comfortable!

Agenda:

7:00	President's Remarks and abbreviated business meeting	Bob Anderson
7:15	Show Tell and Ask	Mike Colella
7:45	Demonstration:	Kirk DeHeer

Meeting Notes: Get involved, ask, share, and chat!

Please mute your microphone unless you are speaking

Test your Zoom settings before the meeting at <https://zoom.us/test?zcid=1231>

Zoom Support Center: <https://support.zoom.us/hc/en-us>

To help defray the cost of the demonstration, you are encouraged to chip in using our secure PayPal link on the MCW website. We suggest a contribution of at least \$5. You do not have to sign up for PayPal to send money. Click on the link or navigate from the "Meetings" page.

<https://montgomerycountywoodturners.org/demo-fee/>



President's Perspective - Bob Anderson

As this is written, the sun is shining and more and more of us are vaccinated. The CDC released new guidelines with fewer recommended restrictions. What does this improving situation mean for us? Quite frankly, we don't know yet.

While some of our members may be ready to return to meetings, many are not. Conversations with our friends at the Woodworkers Club are ongoing, with issues of timing and spacing and vaccinations all to be considered. Given that they have not had any Covid-related issues, certainly their actions have been effective. Any return should be based not only on MCW but on the importance of keeping everyone at WWC safe.

So, at this time the Board continues to monitor the situation, with eager anticipation of returning to see the chips fly once again. But, as it is an ever-changing circumstance, only time will tell.

Stay well.

Bob



April 2021 Montgomery County Woodturners Meeting

The zoom meeting of the Montgomery County Woodturners (MCW) was called to order at 7:02 April 8th with nineteen present, including one potential new member, Joel Perpera.

Because of the Covid 19 pandemic, the Bring Back Challenge continues to be suspended.

Anyone not having paid their dues by April 15th will be removed from our membership roll. But if the reason for nonpayment is a financial hardship, please contact President Bob Anderson (robert.anderson4@verizon.net) or membership chairman Steve Drake (skdjmbd@gmail.com) and payment will be excused and this information will be kept in the strictest confidence. Annual dues are \$25 per individual and \$35 per family.

The American Association of Woodturners (AAW) annual in-person meeting for 2021 was suspended but the substitute zoom meeting is scheduled for July 17 & 18. The agenda has yet to be released by AAW.

The Women in Turning (WIT) 2021 virtual exchange program registration is open until April 11. This year teams of women artists from different disciplines are invited to participate. So please consider entering. For additional information, please see the WIT webpage.

In addition, MCW needs a chapter representative for WIT. Anyone willing to assume this role should contact Bob. For more information on the position, please contact Ellen Davis our former representative. (ellen@twistedtreedesign.com)

Please consider taking a more active role in MCW by volunteering. We have several worthwhile volunteer programs, such as Turning for the Troops, Wounded Warriors and Skill Enhancement Workshop (SEW), but we are always interested in supporting more causes and need members to support them.

Each month we remind you to let us know of your interest in selling and displaying your work at various local shows or other venues. It is important you do this so that we can post this information in the *Turning Journal* and members can attend these events and support you.

We are also interested in seeing our members expand their skills and talents. One way to do this is by doing demonstrations for MCW and other local clubs. This would not just help members develop their turning abilities and confidence, but it

would also assist MCW and other woodturning clubs in the area by putting together a group of practitioners from which to draw for our own and other local clubs demonstration needs.

All in-person programs continue to remain canceled due to the coronavirus pandemic. This includes our monthly in-person meetings and SEW. We will let you know when they once again resume.

Library Exhibits and Wounded Warriors also remain suspended. However, you may continue, on your own, to Turn (pens) for the Troops, make Bead of Courage containers (for kids under going lengthy medical treatment) as will be bowls and other items for Turning Works (for various charitable events). At this time these activities have been suspended, but it is always a good idea to have some “on the shelf” for when they resume. For further info on these contact Roman Steichen for Turn for the Troops, (3rdGenPenShop@gmail.com), Steve Price (prices1950@yahoo.com) for Beads of Courage or Ellen Davis for Turning Works. Those needing pen kits should contact Roman.

The Facebook link for MCW is <https://www.facebook.com/groups/194941367515021/> . Go there to see posts or join the group.

Due to the pandemic, our in-person meetings will continue to remain virtual until further notice. Our next meeting will be held via Zoom on May 6 and our demonstrator will be Kirk DeHeer. There is a great write up of his work in the April *Turning Journal*.

Our demonstrator tonight is Robin Costelle who will show us his techniques on turning a two-piece hollow form. For more information on Robin’s work, which includes bamboo fly rods, dulcimers and more, visit his website and the April *Turning Journal*.

Show and Tell participants tonight were Joel Perpera, Richard Webster, Ken Lobo, Gary Guenther, Joe Ber’nard, Jeff Struewing, Mike Colella and Alan Wurtzel.

The meeting & demonstration concluded at 9:25 PM.

Respectfully submitted,

Mary Aronson

MCW 2021 FUTURE REMOTE PROGRAMS (Gary Guenther)

Thursday, June 10, 2021 (7:00 p.m.) – HangOut- III – Just Us Having Fun

This third edition of *HangOut* will be on our normal June meeting day and time to hold the place of our later June meeting and demo that will occur on Saturday, June 26 at 1:00 p.m. because our June demonstrator is in England, and his time runs five hours later than ours.

We miss the camaraderie and socializing and sharing of our past live meetings, but we can still Hang Out together via Zoom from the comfort of our own homes, with our fave bevs in hand. Mike will be the Zoom host, as always. Come when you can; stay as long as you like. Just click in and Hang Out. We will chat. We will share our experiences. We will ask and answer questions. We can give tips. We can show what we are working on directly from our own hot hands. We can joke and laugh and catch up with each other. It's just free-form social time with the woodturning friends you've been missing, and we encourage you all to join in the fun.

Saturday, June 26, 2021 (1:00 p.m.) – Richard Findley – Box with Insert

Richard Findley is a Registered Professional Turner and a member of The Worshipful Company of Turners. He lives in Leicestershire in the English Midlands and specializes in architectural spindles, furniture, and unique commissions for a living, but he does like to have fun on the side (side grain). He comes from a long line of woodworkers, going back at least five generations, and he has been involved in woodworking since 1996, and woodturning since 2006 when he set up The Turner's Workshop to pursue his passion for spinning wood.



I originally saw Richard on the 11/22/20 edition of Pat Carroll's *Meet the Woodturner* show. What a great choice for Pat to have him on. He was relaxed and cool, and I knew I would like to hire him. Richard later stood in for Les Thorne on short notice for the 2/25/21 Conkers Live demo, sponsored by Terry Smart and his Chestnut Products brand, and he did a brilliant job. Again, very relaxed and extremely knowledgeable and dispensing tons of great info and tips during an attention-grabbing box demo with a cabochon insert of pewter. He even poured the molten pewter! This performance convinced me that I had to hire him for a MCW IRD. I've asked him to repeat that box demo, but with the cabochon insert being made of imitation ivory instead of pewter because the pour takes more time than we have available. He was very accommodating in fitting us into his busy schedule, which was not a given, even with a long lead time.

Richard is a regular contributor to the prestigious UK magazine *Woodturning*, with over 100 articles published, and he's been on the cover twice. Here's his website: <https://turnersworkshop.co.uk/> I follow him on Instagram https://www.instagram.com/richard_findley/ Based on what I have seen, I have very high expectations for his demo for MCW.

JULY ? ... DUNNO ... Stay tuned.**Thursday, August 12, 2021 (7:00 p.m.) – Art Liestman – Lost-wood Box**

Many of you are familiar with Art's signature whimsical series (plural) of puzzle pieces and funky tea pots (like the one Phil Brown owned) and things that don't look like they were made on the lathe. This will be a treat. He's going to show us his "lost-wood" techniques where a piece of waste wood is glued in before turning and removed afterwards. In this case, his result will be a fully hollowed and lidded box that is very much not round.



Art's motto is "I Just Make Stuff". And Make he does, and has been for 20 years. You can see a lot of his striking work on his website galleries at: <http://www.artliestman.com/image-galleries.html>

His work has been featured in numerous shows and exhibitions, in various magazine articles, and in several books. He has taught week-long courses at the John C. Campbell Folk School, the Arrowmont School of Arts and Crafts, and Ecole Escoulen, as well as numerous single-day classes for local clubs. He has demonstrated in seven AAW International Symposia and served on the AAW Board of Directors from 2014-2016. Originally from Kansas, Art has lived in Coquitlam, British Columbia for many years and is now retired from his career as a university Professor.

Art's article describing the lost-wood process, "Beyond Round: The Lost Wood Process" was published in *American Woodturner*, Aug. 2012 (Vol. 27 #4). Check it out in advance to get the gist of what he will be showing us live.

Saturday, November 6, 2021 (1:00 p.m.) – Philip Greenwood – Bark-edge Pot

Philip Greenwood (is that a great name for a turner?) is a delight. Perhaps you watched his excellent demo of an earring stand for Chestnut/Conkers back in March. I was extremely impressed by his teaching skills and the tool use he displayed during this demo of an everyday object, and I sought him out. Phil graciously accepted my invitation to turn for MCW. Tentatively, I have asked him to demonstrate a bark-edge pot for us.

Phil lives in the North Yorkshire area of England, only about ten miles from Castle Howard, where *Brideshead Revisited* was filmed. He started woodturning full time in 1986 and attended craft fairs for more than 12 years. He was accepted onto the Register of Professional Turners in 2006, showing he had reached a very high standard. He has been a woodturning demonstrator since 2008 at clubs and exhibitions. He has published over 60 articles in *Woodturning Magazine*. He likes to work with native timber, sourced locally. His work ranges from utility ware to works of art. He produces small to large items, which he sells at the shop along with his workshop. Phil has a great attitude, to go with his skills, and this is guaranteed to be a fun demo.



AAW Maker Photo Gallery: Linda Ferber

Wind and Sun Spirit Dance
2020, maple bowl with carving,
woodburning and acyclics paint.

**DIRECT LINKS TO ONLINE PHOTOS - (For your viewing pleasure)**

Note: All photo albums are captioned. Every photo has a caption. Depending on your platform, to see the captions look in the upper right. You should click or tap the circled “i” (which stands for “information”) or the three vertical dots and then select “information” from that menu. Enjoy.

MCW April '21 Remote Gallery <https://photos.app.goo.gl/LR5ZTw7rzyDcWnMF7>

MCW April '21 Program – Robin Costelle <https://photos.app.goo.gl/kZmSMoiEq7fxuh729>

CLICK IT – Web Site of the Month (Gary Guenther)

A recommendation of a link I believe to be worth your time:

Terry Martin is a highly respected and well known turner, wood artist, author, and editor from Australia. We are familiar with his many contributions to the AAW *American Woodturner* journal, but his list of publishing credits is truly staggering. Check out his creds on his website: http://www.terrymartinwoodartist.com/about_terry.html Terry's book of imaginative works, *The Creative Woodturner*, is readily available online for good prices and deserves to be on your shelves.

His personal works, unique and of unsurpassed quality, reside in numerous public and private collections worldwide. I just love looking at things in his website galleries – there are lots of good clicks here: <http://www.terrymartinwoodartist.com/gallery.html> Check it out.



VIDEO VIEW – Video of the Month (Gary Guenther)

Online woodturning action for your viewing pleasure

Craft Supplies USA (CSUSA) has enlisted its long-time Resident Instructor, Kirk DeHeer, to provide a series of introductory woodturning videos they are posting on their website under the title: *Woodturning 101*. As I write this, there are five available.

<https://blog.woodturnerscatalog.com/category/woodturning-videos/>

Woodturning 101

Introduction <https://blog.woodturnerscatalog.com/2020/12/woodturning-101-introduction/>

Video 1 - Bead & Cove Stick <https://blog.woodturnerscatalog.com/2020/12/woodturning-101-video-1-bead-cove-stick/>

Video 2 - Turn an Egg <https://blog.woodturnerscatalog.com/2021/01/woodturning-101-video-2-turn-an-egg/>

Video 3 - Turning a Twig Pot <https://blog.woodturnerscatalog.com/2021/01/woodturning-101-video-3-turning-a-twig-pot/>

Video 4 - How to Sharpen <https://blog.woodturnerscatalog.com/2021/02/woodturning-101-video-4-how-to-sharpen/>

Video 5 - Rough & Seal a Green Wood Bowl <https://blog.woodturnerscatalog.com/2021/03/woodturning-101-video-5-rough-seal-a-green-wood-bowl/>



Woodturning 101 – Video 5 –
Rough & Seal a Green...

March 1, 2021



Woodturning 101 – Video 4 –
How to Sharpen

February 11, 2021



Woodturning 101 – Video 3 –
Turning a Twig Pot

January 26, 2021



Woodturning 101 – Video 2 –
Turn an Egg

January 11, 2021



Woodturning 101 – Video 1 –
Bead & Cove Stick

December 23, 2020



Woodturning 101 – Introduction

December 23, 2020



Show, Tell & Ask Remote Gallery April 2021



Joel Papera
Oak bowl - 7.5" dia

Doctor's Woodshop
microcrystal wax
bowl finish

Joel Papera
bowl
7" dia
oak
Doctor's
Woodshop
microcrystal wax
bowl finish





Joel Papera
Oak box 2.25" dia
Doctor's Woodshop
microcrystal wax bowl
finish



Joel Papera
ice cream scoop handle
5" x 1.25"
commercial wood unknown
Doctor's Woodshop microcrystal wax
bowl finish



Joel Papera
Cherry?? rolling pin
14.5" x 1.75"
Doctor's Woodshop
microcrystal wax bowl
finish



Gary Guenther
"The Eyes Have It"
sphere 3.75" diameter
silver maple burl, TransTint
dye
sanding sealer (not totally
finished yet)



Jeff Struewing
Picture frames
4" x 3/8" Cherry
with modern retro photos



Jeff Struewing
Saw Handles - 13" x 1.25"
White oak (red), Ash (blue), Locust (natural)



The Saw
about 4.5 feet long
with the red handles

Joe Barnard
burl box - 5.75" x 5.5"
cherry burl, walnut lid, maple finial



Joe Barnard
pair of goblets - 7" x 2.75"
cherry burl, cocobolo stems, wenge bases, walnut tray



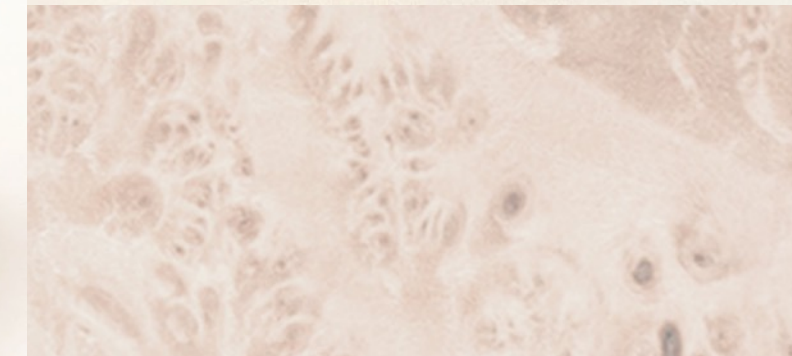
Mike Colella
Bowl - Spalted
Poplar - 5"H x 4" D



Mike Colella
Walnut Crotch Platter - 19.5 x .75
OSMO oil



Mike Colella
Bowl - Maple, blue resin
5"H x 4"D
OSMO oil and buffed

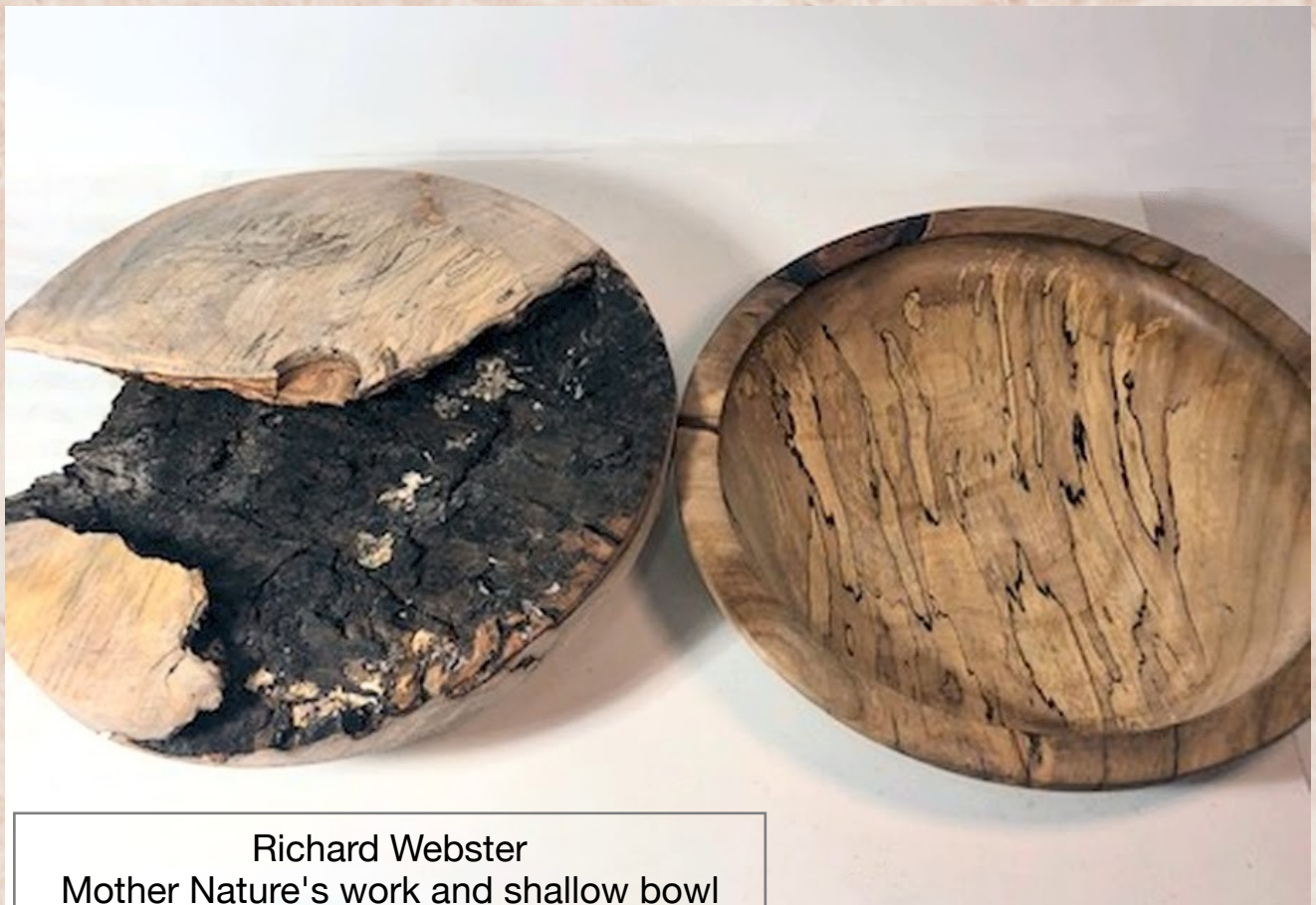


Ken Lobo
Staved
Vessel - 32
staves
5.5"H x
9.5"D
Purpleheart
and Maple
Sealed
with
Shellac,
wipe-on-
poly top
coat



Ken Lobo
"B Flat"
Staved Vessel - 36
staves
5.5"H x 9.5"D
Lamination of
Walnut and Maple
Sealed with
Shellac, wipe-on-
poly top coat

Richard Webster
shallow bowl
spalted hard maple



Richard Webster
Mother Nature's work and shallow bowl
both hard maple



inside-bark-
edge sculptural
object
hard maple





Smithsonian

Craft Show

2021 SMITHSONIAN VISIONARY AWARD HONORS ARTISTS IN WOOD

The 2021 Smithsonian Visionary Award will be presented to two masterful wood artists, David Ellsworth and Michael Hurwitz. They will receive the Awards during the Smithsonian Craft Show Preview Night Benefit on Wednesday, October 27, 2021, at the National Building Museum in Washington, D.C.

Established in 2014, the Smithsonian Visionary Award is given annually to American artists deemed by experts in the field to have achieved the pinnacle of sculptural arts and design in their individual medium. Wendell Castle, Albert Paley, Toots Zynsky, Dale Chihuly, Faith Ringgold, Joyce J. Scott and Patti Warashina are previous recipients.



*2021 Smithsonian
Visionary Award Recipient
David Ellsworth*



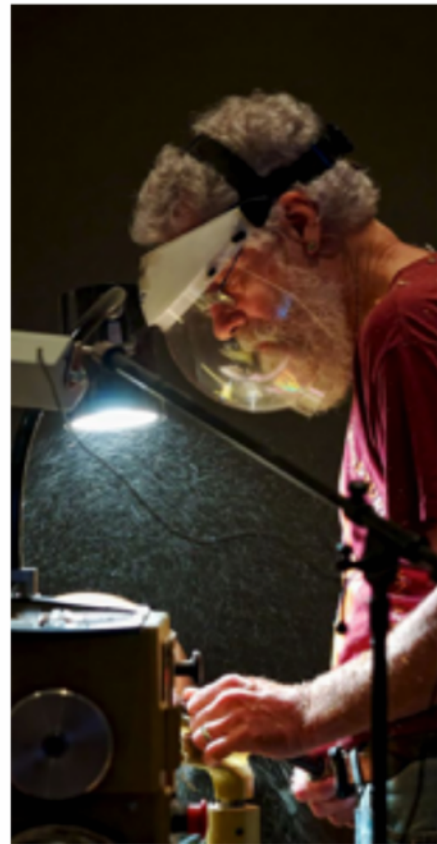
*2021 Smithsonian
Visionary Award Recipient
Michael Hurwitz*

Website: smithsoniancraftshow.org



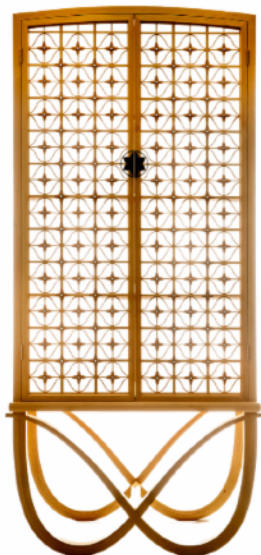
David Ellsworth

David Ellsworth is recognized for his significant contributions to the field of woodturning with his exquisite thin-walled hollow vessels, his development of new bent tools for turning and his generous and inspiring work as a teacher.



Michael Hurwitz

In the forefront of the studio furniture movement for over thirty years, Michael Hurwitz is known for his elegant design and exceptional craftsmanship. His pieces are timeless and sophisticated and he is widely credited with transforming furniture making into a new art form.



Both artists will be represented in the annual **Smithsonian Women's Committee Visionary Benefit Auction**, which occurs live and online on May 14, 2021. Produced by the Smithsonian Women's Committee and hosted by Rago Auctions, the event raises funds to support projects and initiatives across the Smithsonian Institution.

Treasury report - December 2020 (Tim Aley)

Beginning Balance	\$4,220.37			
April Income 2021			April Expenses 2021	
Membership 2021	\$78.18		Membership Paypal fee	\$3.18
Lifetime Membership	\$0.00		Demonstrator	\$240.00
Demo Fee	\$157.00		Paypal fee Demo	\$9.55
Total	\$235.18		Total	\$252.73
Ending Balance	\$4,202.82			

Members in the news

Paul Sandler	I also have some utility items for sale at the Something Earthy Pottery Studio at 24410 Hipsley Mill Road, Laytonsville, MD 20882, and I have submitted to the Black Rock show, but haven't heard back as yet.
William Flint	I also sell on Etsy. My shop name is UFOKing, the direct link is https://www.etsy.com/shop/UFOKing
Jeff Struewing	Pieces in 2 display windows for Takoma_ARTery project (https://www.instagram.com/takoma_artery/?hl=en)
Tim Aley & Paul Sandler	Tim Aley And Paul Sandler are members of the Gaithersburg Artist Collective. We are a co-op of artists in many mediums. Our current show is at a pop-up gallery at 26-A Grand Corner Avenue, Gaithersburg, MD 20878.
Mike Colella	The Family Room Market, May 8th 9-2 in the parking lot. Frederick Arts & Crafts Festival, June 11 & 12, on the canal, 10-5 each day. FREE
Joe Barnard	Will be at the Olney Farmers Market, May 9, 9-1, and other dates to follow. 2919 Olney Sandy Spring Rd, Olney.



The Cycle of Life by Michael J. Colella

There are many more interesting, prettier and better woods to turn, but when it came to real construction a few hundred years ago, Oak was on the top of the list. White oak was preferred, but I'm sure red was also used. So why am I discussing oak, you ask? Well it started with a dilapidated Very old log cabin on my sister-in-law's farm in Bedford, Pennsylvania.

How old, well that is the question. When I first saw the structure a number of years ago, it was not for the taking, and I said, whenever it comes down, I would like some of the beams. I have turned some old barn beams before and the color and texture of the old oak is quite special. Years have passed, neglect and mother nature have taken a toll on this poor old cabin, that once provided a very sound home for someone.

Present day, "you want the wood come and get it. So I did.



Chain saws sharpened, oiled and gassed, ready to go. I picked an accessible, safe timber to begin cutting and that I did, BEGIN cutting. About 2 inches into this massive beam, which measured 6" X 12", my saw began to resist terribly, like after an hour of cutting, and you're trying to finish one last cut, knowing the blade has got to be very dull by now. Well it WAS dull, VERY dull! So I rechecked the beam noticing signs of dirt and fine grit, which I should have inspected earlier. Oh well, change blades and continue. This timber is only 6" thick, I should be able to cut it in no time, right! With most of the grit cleared, I was able to finish the cut but not without much effort. 2 more cuts and that was it. This beam was cut and hewn for the sole purpose of making this cabin, and that was where it was going to stay.

I managed to load 2 small pieces and a 4' section

remaining of the original beam I cut. Time to head home with my prize. But first my curiosities wanted a little bit more details as to what I was going to be working with.

With a little research, I was able to find information on these early structures.



The Swedes who settled in southeastern PA, in the mid 17th century are credited with bringing the log house form to the American colonies. The Lower Swedish Cabin is a typical Swedish log house, built from hewn logs stacked horizontally and joined by notched ends with a corner chimney. Clay chinking fills the spaces between the logs. The earliest surviving building in PA is the Lower Swedish Cabin, which dates from circa 1640 located along Darby Creek in Delaware County. That style building was adopted by many other settlers in Pennsylvania.



I was quickly beginning to admire the early settlers in their ability to reduce a large oak tree to usable timbers to build their cabins, all using HAND tools and human muscle. Some 300 years later with the latest 24" power chain saw, and I was almost useless.

Home, sharpen blades, clean wood and cut more manageable pieces to turn. I cut one of the lowest beams which had provided a wonderful home and food for some rather large black ants, which started to scatter everywhere when I cut into their nest. Oh well, survival of the fittest, and today I win, although not before they leave behind some rather cavernous voids in the center pith. To make it safe to turn I had to do some resin filling.

Now onto the lathe where my next surprise awaited me. It wasn't my dull chain saw blades, Nor my turning tools, all of which were sharpened when I started, It was the wood. VERY HARD, I've turned ebony, lignum vitae and other known hard woods, but this was acting very different. I was sharpening every few minutes. This was crazy, Why was this wood so hard?

I decided to attempt to find out how old this log might be. Granted I only had a 12" piece, but it was from the center of the tree. So I made a slice and sanded it smooth so I could count the growth rings, I was surprised! In the 6" radius, I was able to count 200 +/- 50 rings. Assuming the early loggers didn't cut down the smallest trees they could find, I'm guessing if you add another 12-24" at the minimum radius, that tree was an old growth oak 400-500 years old or more, when cut, PLUS 300 years means this bowl was made from a tree that existed as much as 700 years ago.

Tree sprouts - 1300

Tree grows till cut - (400 years) 1700

Log cabin built - 1700-1800

Cabin is taken down- 2021

Approximate age of wood - 700 years (conservative estimate)

Now my question to anyone, as I am still searching for the answer. Does wood harden with age? Siri says no, Although not sure whether I believe her source. More research to be done.

Finally with a lot of perseverance I made it through the blank and finished a rather nice looking bowl, which I intend to present to my sister-in-law. I left a small bit of the natural weathered edge on the bowl.





Sanded section of log reveals
200 years of growth rings



Sounds of Silence – Thomas Häckel turns a Turmkreisel (Gary Günther)

Enjoy the sounds of making; no words are needed

I enjoy learning new tools and techniques. When I ran across a series of dialog-free demos by German turner Thomas Häckel, I immediately fell in love with his projects and skills. He shows everything from start to finish in once-real-time. He is clear and concise. He breaks a few safety rules – he's a professional -- we know and understand and will live with it. Just watch and listen to the tools talk.

For the second installment in this continuing series, I'll go ahead and let him show you the item that got me interested in the first place – his Turmkreisel is a spin-top tower with a top that stays on it when it stops spinning. I think it's safe to say that this is his signature item, and he makes hundreds of them, and decorates each one uniquely. Every move is planned and practiced to perfection for maximum efficiency and minimum time. You'll see a variety of tools including a big, honkin' skew, a spindle gouge, two parting tools, what is either a small depressed round-nose scraper or possibly a skewchigouge, several drill bits, and some sandpaper. His holding methods are quite interesting and worthy of a lot of attention. And check out that crazy tail stock with a spring. I have no idea what that's all about – you tell me!

This project is broken into three short video segments totaling a bit over 17 minutes -- the base, the tower, and the spin top.



Here is part 1, the base (5:00): <https://www.youtube.com/watch?v=XlbqZ8ve6E0>

You will get the links to the remaining video parts automatically at the end of each part, but here they are anyway for your convenience, if you want to go back later out of order:

Part 2, the tower (6:30): <https://www.youtube.com/watch?v=9uOnbv2xxNg>

Part 3, the two-part spin top (5:46): https://www.youtube.com/watch?v=yhoUM4YsR_w

If you're interested, here's how he decorates them (16:09) – it's wild!
<https://www.youtube.com/watch?v=VCznVLDiXlk>

Genießen!

AAW leadership has been closely monitoring the status of Covid-19 in preparation for our 35th Annual International Symposium, July 15-18, in Omaha, NE. Above all else, our concern continues to be the health and safety of our members, demonstrators, trade show vendors, partners, and other event attendees.

While this is incredibly disappointing for all of us, we are moving ahead to create an improved AAW Virtual Symposium for 2021 and are actively planning our next in-person symposium for 2022. You can look forward to:

- **AAW's 2021 Virtual Symposium, July 17-18, 2021**, with front-row seats from home for your safety and comfort. We will be using an enhanced virtual event software platform to offer multiple concurrent live demonstration tracks (with access after the conference to all recordings), a virtual trade show, a virtual Instant Gallery, live and silent auctions, special interest topics, drawings, and more. The only thing missing will be the handshakes and hugs from old and new woodturning friends. You will need to wait one more year for that.

Live Online Event

AAW Presents: Eric Lofstrom -Namaste Bowls

Saturday, May 22, 2021, 3:00 p.m. Eastern Time



Join us online for an inspiring afternoon with the extraordinary Eric Lofstrom, whose current woodturning work represents curiosities relating to water, energy, and the human spirit.

In this demonstration, you'll learn the techniques Eric uses to create the endgrain bowls of his Namaste series. These bowls are artistic pieces, intentionally designed to welcome interaction between the viewer and vessel.



- Emphasis will be on artistic inspiration, tool control, and sharpening techniques, techniques specific to turning endgrain, and discussion of the "optically resonant" form.

- Eric will also share simple, yet elegant coloring and texturing embellishments which can be used to add depth and drama to any captivatingly simple form.

After this demo, you'll see small blocks of wood as potential pieces of art, and the use of color and texture as a way to amplify your creative voice!

Cost

- \$10 AAW members, \$15 all others
- Preregistration required. Replay will be available to registered attendees only.

**Registration**

- All experience levels are welcome.
- The presentation is expected to be approximately 120 minutes.
- **Registration is open through Friday, May 21, at noon Eastern Time.**

2021 WIT Virtual EXCHANGE

WIT, Women in Turning, has announced their 2021 virtual exchange program. The [AAW page for this program is here](#), and the introductory paragraphs from the WIT Virtual Exchange webpage are copied below. One addition this year is that they are calling for women across all crafts to participate.

The past years have shown us how important the EXCHANGE has become to a community of women turners in stimulating creativity, fostering collaboration, and facilitating self-confidence.

After the success of the first Virtual WIT EXCHANGE, the WIT Committee has committed to continue the program and expand it to include as many women as possible this year. We encourage all prior participants to reach out to their circle of artist friends (in any media) to consider participating in the 2021 Virtual EXCHANGE .

The WIT committee believes that introducing artists from other media into this EXCHANGE will open new avenues for creativity. At the same time, the art of woodturning will be introduced to an entirely different group of women. The Virtual EXCHANGE creates an environment which will expand awareness of woodturning beyond our current community. This exposure to different media will also foster infinite creative opportunities.

The WIT EXCHANGE welcomes women of all skill level. It is a collaborative project that will enhance skills, friendships, and self-confidence. It's designed to be hard work, but lots of FUN!

Continued on [the WIT AAW site](#)

WIT Representative for MCW Needed!

Ellen Davis, has been our WIT rep for a number of years but now is no longer to fulfill the roll. If you are interested please contact Ellen for details, Ellen@twistedtreedesign.com

World Connections - Links and other noteworthy places.

This page will be dedicated to useful and noteworthy links, Feel free to email me with suggestions: michaeljcolella@gmail.com

AAW: <https://www.woodturner.org/>

Arrowmont: <https://www.arrowmont.org/>

Women In Turning: <https://www.woodturner.org/?page=WIT>

The Woodworkers Club: [The Woodworkers Club](#)

MCW Facebook page: <https://www.facebook.com/groups/194941367515051>

AAW Photo Gallery: <http://www.aawforum.org/community/index.php?media/>

Worth checking out to see some amazing work.

Mark Supik: <https://www.marksupikco.com/>

Conkers Live: <https://chestnutproducts.co.uk/conkers-live/>

Talking Turning: <https://www.awgb.co.uk/talking-turning-zoom-sessions/>

Wood Symphony Artists: <https://www.woodsymphony.com/wood-artists>

To Be Continued.....

Note:

As we all continue to find interesting demonstrators around the world, PLEASE let me know so I can post them here for everyone else to benefit.

Be sure to check out the links Gary has provided below, which I will continue to post as long as they are still active.

Remote Connections (Gary Guenther)

One positive that has come in response to the loss of in-person camaraderie caused by the pandemic is the proliferation of new venues of free online woodturning content. A number of woodturners feeling the lack of customary togetherness are creating and participating in online venues to try to keep the community connected via interactive demonstrations, interviews, and discussion sessions. In two cases these are being assisted by corporate sponsorship. Here are five excellent examples for your selection.

Conkers Live

This is a regularly-scheduled series of free, interactive woodturning demonstrations, sponsored by Chestnut Products (which produces a variety of finishes, dyes, etc.). There is no overt advertising. The purpose is to support demonstrators and keep turners together during the lockdown. All the demonstrations are free to watch and can be accessed from this web link: <https://chestnutproducts.co.uk/conkers-live/>. It is based out of the UK and hosted by Terry Smart. It is distributed directly from their website and requires no Zoom or registration -- just tune in as you would with YouTube. Each show is a different demonstrator. They are produced in the evening UK time, which is early afternoon EST. You can subscribe to their bulletins to get updates about events and demonstrators. Future dates are Dec.14, Jan.11, Feb.4, Feb.24, March19, April12, and May 12.

Woodturning Live

This regularly-scheduled series of free, interactive woodturning demonstrations, held via the Zoom platform, is sponsored by Record Power, a respected equipment maker. There is no advertising. It is hosted by Mike Davies from New Zealand with Aussie turner Theo Haralampou as the demonstrator. They are transmitted in the morning from NZ/Oz, which puts them in early evening EST. I find Theo's demonstrations to be interesting, informative, varied, and excellent. To join these educational and entertaining live sessions simply email miked@recordpower.co.uk with RSVP in the subject line, and you will immediately receive your log-in code by return email.

Meet the Woodturner

This regularly-scheduled series of live interviews is based in UK and hosted by Pat Carroll from Ireland. Each episode highlights the woodturning life of a well-known turner in an interactive Q&A session with questions also taken from viewers. To sign up for these Zoom sessions, email meetthewoodturner@gmail.com and you will receive invitations.

Behind the Scenes

This "occasional" show is periodically sponsored by Trent Bosch Studios and also highlights the woodturning life of a famous turner in each episode. <https://virtualwoodturningdemos.com/> These are on Zoom, and free, but registration (for \$0.00) is required. These freebies are held in conjunction with other paid IRDs sponsored by Trent. You can get on a mailing list to receive the announcements of future programs.

Talking Turning

This is a regularly-scheduled series of shows sponsored by the Association of Woodturners of Great Britain (AWGB) -- their version of the AAW. The focus here is a live Zoom forum for talking about various preselected turning subjects and having Q&A during the sessions, with an hour of open-mike discussion with attendees participating. You can go here for more info: <https://www.awgb.co.uk/talking-turning-zoom-sessions/> After registering, you will receive a confirmation email containing information about joining the meeting. Register in advance to ensure you receive the email with meeting details. The meetings are at 2:30pm EST every Tuesday and Friday afternoon.



Chapter Positions Contacts

Updated 1-4-21

President	Bob Anderson	robert.anderson4@verizon.net	301-270-6005
Vice President	Jeff Gilbert	jmgilbert3@verizon.net	301-460-6928
Secretary	Mary Aronson	mmharonson@gmail.com	202-291-0654
Treasurer	Tim Aley	taley16922@aol.com	301-869-6983
Program Chair	Gary Guenther	gary.guenther@iname.com	301-384-7594
Membership Chair	Steve Drake	skdjmbd@gmail.com	301-208-8265
Newsletter Editor	Mike Colella	michael.j.colella@gmail.com	301-942-2853
Webmaster	Jeff Struewing	jeff@struewing.us	240-988-6422
President Emeritus	Ellen Davis	ellen@twistedtreedesign.com	301-728-5505

Volunteers

Wounded Warrior Support Program Director	Don Van Ryk
Skills Enhancement Program Director	Steve Haddix, Duane Schmidt assistant
Public Library Exhibit Committee	Joe Barnard, Mary Beardsley assistant
Beads of Courage Program Director	Stephen Price
Turning Works Program Director	Ellen Davis
Montgomery County Ag Fair Program Director	Tim Aley, Paul Sandler (assistant)
Turn for Troops Project Leader	Roman Steichen
Pen Skills Enhancement Program Director	Roman Steichen
Lending Librarian	John Laffan
Videography	Joe Stout, Joe Barnard, Joe Mosli
Gallery Photography	Mike Colella
Candid Photography and Web Albums	Tim Aley, Gary Guenther, Mike Colella
Show Tell & Ask Leader	Mike Colella
Show Tell & Ask Recording and Trucking	Richard Webster and Paul Sandler
Demo Fee Collection	Bob Grudberg
Setup Committee	Paul Sandler, Jeff Struewing
Clean-Up Committee	Paul Simon, Paul Sandler
Discount Deacon	Steve Drake
Bring Back Challenge Ticket Giver	Bob Grudberg
Activities Arranger	Tim Aley
Backup Treasurer	Ellen Davis
Backup Webmaster	Stephen Price
Backup Newsletter Editor	Mike Gerech
Backup Secretary	Steve Drake
Remote Program Local Host	Tim Aley

MCW Resources

Our Hosts: Our most important resource is our space. We are deeply indebted to our hosts, [The Woodworkers Club](#), for their continuing support in sharing their facility with us. Please give Amy, Chris, Matt, and Ralph your individual expressions of appreciation, both verbally and with your wallets. If you need something, they will get it for you, either off the shelves or from the catalog – with no shipping charge. Please help support them.

MCW Hands-on Mentoring Program: Hands-on mentoring is one of the most effective ways of learning turning techniques, tool use, and safety. We all have unique knowledge and ideas to impart. We encourage all Members to sign up to share a few hours of their time and knowledge at the lathe with each other, on a peer-to-peer basis, either in their homes or at Skills Enhancement sessions. We particularly encourage our new Members and beginners to use this opportunity to learn techniques and safety. Please let Ellen Davis at Ellen@TwistedTreeDesign.com know if you would like to participate.

Skills Enhancement: Once a month, we have an open lathe session at WWC, either on Thursday's before the meeting or on the Sundays after the Meetings, under the guidance of Steve Haddix. Please check the Newsletter and Web Site Calendars for monthly dates and reserve a limited slot in advance with Steve Haddix. Everyone shares skills and information, and its lots of fun.

MCW Facebook Group: MCW has a private Facebook Group. Use it to post pictures of your work, ask questions, check out upcoming events, and it provides another venue for our members to get to know each other better. Go to <https://www.facebook.com/groups/194941367515051/> and request to be added to the group.

MCW Lending Library: Books and DVDs are available for borrowing. We have a great selection of video demonstrations and instructional materials from many top professional turners. If you missed a Meeting and would like to see the Program, you can check out the DVD. Please sign the form to check them out from John Laffan. If you have titles out, please return them promptly. There is no charge for this service.

Silent Auction: Not everyone has access to a chainsaw or a band saw, which makes it nice to have access to reasonably-priced, properly-sized turning blanks. Please bring your 'road kill' to share with other Members.

Discounts: Steve Drake has assembled a selection of retailers who provide MCW Members with monetary discounts. First and foremost, of course, is the Woodworkers Club, but we have a number of others too. Please check out the list of participating merchants on the Web Site or at the end of each Newsletter.

Web Site: <http://montgomerycountywoodturners.org> Thanks to Webmaster Jeff Struewing we have an outstanding Web Site.

Newsletters: The MCW Newsletter Archive, accessible on the website, is a tremendous resource, containing the complete history of all MCW programs and activities from day one, as seen on a monthly basis through the years. All past issues back to Volume 1, Issue 1 in 2007 are available at <http://montgomerycountywoodturners.org/newsletters/>



Member Discounts

Woodworkers Club Rockville, Maryland (www.woodworkersclub.com). The Woodworkers Club, a Woodcraft affiliate, offers MCW Members a 10% rebate on all regularly priced items. After reaching certain plateaus of spending, you will become eligible for a rebate which you will receive by email and is good for 3 months. Non-qualifying items are power tools, items already on sale, gift cards, and items from companies that prohibit discounting (Festool, SawStop, Leigh, and a couple others). Our relationship with Woodworkers Club is very synergistic and important to us, and I encourage you to make your woodturning and woodworking purchases from them. If they don't have something in the store that's in the Woodcraft catalog or on their web site, they will get it for you, and you can save on shipping by picking it up at the store.

Exotic Lumber, Inc. Frederick, Maryland (<http://www.exoticlumber.com/>) With over 130 species in stock, Exotic Lumber has one of the widest selections available on the East Coast. We offer a 10% discount to MCW Members with membership badge. We have warehouse locations in Frederick and Annapolis, where you are welcome to select from our extensive selection of turning blocks.



Craft Supplies USA (www.woodturnerscatalog.com) is a family-owned and operated business serving the woodturning community. Individual MCW Members can save 10% on all finishes & disc abrasives -- just mention "Montgomery County Woodturners" and save, all year long.



Hartville Tool (www.hartvilletool.com) is a nationwide retailer of general and specialized tools for woodworking and home improvement. They offer free shipping to all. If you have accepted the MCW offer to "opt in" to be a member of the Hartville Tool Club, you will get a 15% discount on all tools (excluding sale items, gift cards, special orders, and Festool Products)



North Woods Figured Wood (www.nwfiguredwoods.com) North Woods is a multi-generational family-owned supplier of wood and wood blanks specifically selected with the woodturner in mind. They specialize in Pacific Coast native species of trees and have sizes from single pen blanks up to 1,500 lb. whole burls. With 20+ species in stock, there is something for everyone. Members get a 15% discount by mentioning their MCW membership during a phone order or by entering "WOODTURNERS" as a coupon code during online ordering.





Ken Lobo
"B Flat"
Staved Vessel - 36 staves
5.5"H x 9.5"D
Lamination of Walnut and Maple