



OFFICIAL CHAPTER
AAW
 AMERICAN ASSOCIATION
 OF WOODTURNERS

MEETING LOCATION

Live at WWC
 And Online

Meeting Location

WOODWORKERS CLUB 11910-L
 PARKLAWN DR ROCKVILLE, MD
 20852 301-984-9033
REMEMBER TO PARK IN BACK

Notice to all, submissions for TJ must be in by 25th of the month.

Thursday, June 6th, 2024, 6:30 p.m
Ken Poirier
Lidded Boxes the Ray Key Way

Contents

Evening Program	1
Presidents Message	3
Editors Corner	6
Minutes April Meeting	7
Future Programs	10
Direct links to photos	10
Creative Craft Council notes	11
Bring back Challenge	12
Show & Tell	13
Treasures Report	33
Members in The News	34
AAW - Symposium images	35
AAW - Did You Know	37
Remote Connections	38
Member Contacts	39
MCW Resources	40
Member Discounts	41
Tailstock	42

Thanks to our Contributors :
 Joe Barnard
 Tim Aley
 Bill Bell
 Mary Aronson
 Gary Guenther

Ray Key was a prolific English turner of lidded boxes, platters and bowls. His iconic Pagoda Box is a multi-level precision lidded box that defines the lidded box genre. There are many YouTube videos of Ray



Key demonstrating his techniques for the various box forms that he is known for. In this demonstration, Ken

Poirier will show and explain the modified turning tools that Ray uses in his box production and will demonstrate his two lidded boxes from one piece of timber using the same Ray Key modified tools.

Ken is a life-long woodworker who now mostly devotes his time to wood turning. His first introduction to the lathe was in an uncle's shop on a bench top, tubular Sears Craftsman lathe where he turned his first project – a gavel, turned with a sharpened screwdriver. He purchased his first lathe, a Grizzly G1495 in the early 90s to augment his wood working to manufacture table and chair legs/spindles. Ignorance was bliss and who knew then that tools from the manufacturer were not truly sharp. Having graduated from relying on the 80 grit tool, he has come to appreciate the freshly sharpened edge on a raw piece of wood. In addition to keeping his tools sharp, Ken also teaches at the local Woodcraft stores and the Fairfax Nova Labs and serves as a mentor at the Catocin Area Turners. He is quite satisfied with his Powermatic 3520B in addition to his three other lathes (including his original G1495).



President's Perspective - Joe Barnard

Welcome to Summer: It's June, and things are hopping along. We just got back from Portland a few days ago. Everyone who went had a great time, I think. We certainly learned a lot. I believe the most popular sessions were done by Eiko Tanaka, of Kaga City, in Ishikawa, Japan. She is a laquer artist and woodturner, who told us all about Urushi laquering. I assume that's what she was saying, as it was all in Japanese, and that's Really quite fascinating,



Eiko Tanaka what her interpreter told us. nonetheless. Art Leistman demonstrated his most recent



Art Leistman

ways to use the shallow big-leafed maple wood they have available up in Canada, largely through making fascinating Suessian small villages of towers via barrel turning.

We should have our application for an exhibition at Glen Echo Park for next year in their hands by the time of the meeting. I think we've put together a good package for them to consider, which is, ultimately, all we can do. There are other venues to consider, so this is not the finale of our efforts in this area.

In August, we will have our extended demonstration series at the Montgomery County Fair. As we get closer, and that includes the meeting this week, Tim Aley will be encouraging you to sign up to demonstrate a few hours on day during the weeklong fair. It is a lot of fun, and worth the time.

Our demonstrator this month is Ken Poirier. Ken is currently Program Chair of Catoctin Area Turners. He will be demonstrating how to turn small lidded boxes in the style of the late English turner Ray Key, using the modified turning tools that Ray used in his box production and will demonstrate his "two lidded boxes from one piece of timber" method.

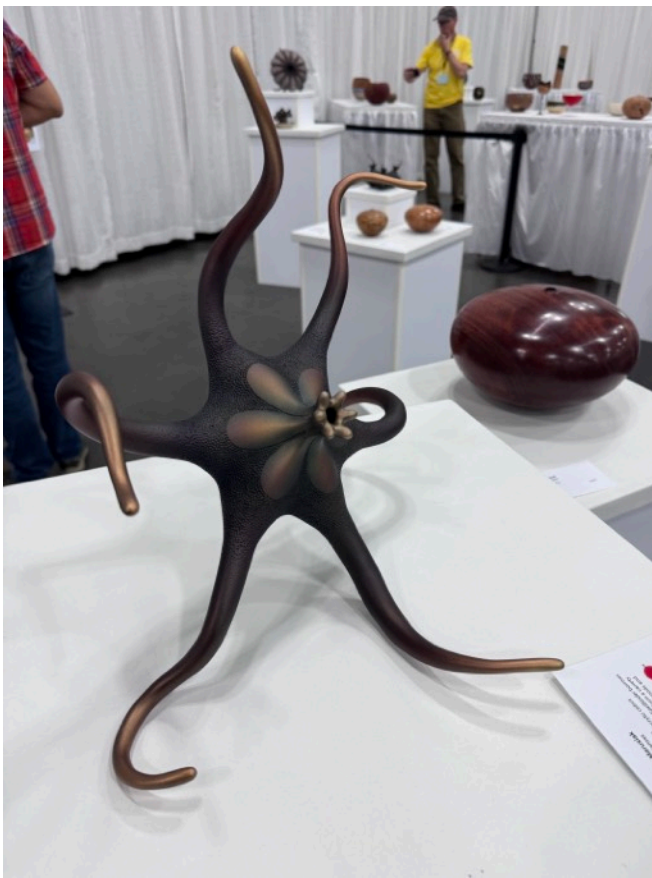
Finally, this is our second announcement that our annual MCW picnic at the Colella's house will be Sunday July 14th. Please, everyone, make an effort to come- Mike certainly is making a big effort to host us each year, and it really will be a good time. Jeff Gilbert will be awarding a gift card to one of the makers of a beads of courage bowl that day, so have your beads of courage bowls done soon.



MCW contingent in Portland, Oregon

(Editors note)

Adding to Joe's notes from the AAW Symposium, My favorite was one of the 2 POP Artist Showcase awardees, Heather Marusiak. Having been turning for only 4 years, she has produced a body of work simply stunning. Seen here with me and Alex Bradley.



2 of the many pieces by Heather Marusiak

Editor's Corner (Mike Colella)

*For Show, Tell & Ask, please have your pieces here by 6:20
I will shut down the photo booth at that time.*



June 6, 2024 - Live & Remote Meeting Information

Our IRD meeting will be conducted over ZOOM and we will meet in person at WWC. You will receive the ZOOM meeting information at least 24 hours before the meeting via email from **Bill Bell**. The **ZOOM** meeting will be active at 6:00 for system testing, chat with friends, and fellowship! Sign in, mute your microphone unless speaking, and get comfortable!

Agenda:

6:00	Doors & Zoom session opens, in person show & tell drop off and social time.	
6:30	President's Remarks and business meeting	Joe Barnard
6:50	Show Tell and Ask	
7:15	Talk followed by Q&A if time permits	Ken Poirier

Meeting Notes: Get involved, ask, share, and chat!

Please mute your microphone unless you are speaking

Test your Zoom settings before the meeting at <https://zoom.us/test?zcid=1231>

Zoom Support Center: <https://support.zoom.us/hc/en-us>

To help defray the cost of the demonstration, you are encouraged to chip in using our secure PayPal link on the MCW website.

\$5.00 charge for tonight's demo.

MCW May 2024 Meeting Notes

The Montgomery County (MD) Woodturners (MCW) meeting was called to order at 6:34 PM May 9, 2024. Present were 18 members and one guest, Jim Echter from Rochester, NY.

Dues for the year are past due. But if you haven't yet paid, you can still do so. Checks may be made given to MCW Treasurer Tim Aley or you can pay through the MCW website using either a credit card or PayPal. Annual dues are \$35 per person or \$45 per family. If you cannot pay due to financial hardship, please talk to the MCW membership coordinator, Steve Drake and your dues will be waived, no questions asked. We don't want to lose you as a member.

Anyone planning to attend the Annual American Association of Woodturners (AAW) Symposium in Portland, OR is asked to let Tim Aley know so he can compile a list of those attending from MCW and their phone numbers. At the last several Symposia we have had a group dinner and I hope we can continue that.

The AAW is also offering a much less expensive virtual symposium that you can watch from home, complete with video links to most of the sessions in Portland. They have some really fantastic video equipment so you should have a good experience. For more information on virtual access, please check the AAW website.

MCW demonstrated at the Gas and Steam Show at the Montgomery County Agricultural History Farm Park at the end of April. It was a good time, though we were not overly represented. John Laffan, Tim Aley and Joe Barnard attended on Sunday.

Our programs led by volunteers are going well, but more are still needed.

President Barnard is especially interested in getting members who have not volunteered in the past, as well as newer members, to step up to the plate and participate. So please help the club by helping out.

President Barnard thanked those who signed up to help with the audio visual set up for monthly meetings and drafting applications for exhibitions. He said we are managing to get the meetings set up and improving each month. We are now currently well into our application for an exhibition at Glen Echo in combination with MidMaryland Woodturning Club and the Friendship Star Quilters. The application isn't finished yet; it is now being reviewed and edited internally.

The current MCW Library materials are up-to-date and listed in the current *Turning Journal*, and available at tonight's meeting. Please see the list and utilize this free-to-members resource. Questions can be answered by John Laffan.

Joe Barnard and Joe Stout took down the Quince Orchard public library exhibit. Photos are available on our website. For the first time Barnard can remember, a piece was sold out of exhibit by Joe Stout.

Wounded Warriors Project met last Friday at the Woodworkers Club. Joe Stout has now taken over this event from Don VanRyck. Don has retired and is in the process of moving.

Turn for the Troops is ongoing. Members can always make pens for the troops on their own. Contact Roman or Chris at WWC to get kits. The completed pens can be turned in to the Woodworkers Club through the end of the year, at which point they will be shipped to our local USO office for dispersal.

Women in Turning is still in need of a representative from MCW. Anyone can take this position. Dori Reissman, who had to resign as our WIT rep because of family issues, has graciously agreed to represent us at the upcoming AAW WIT session in Portland. But we do need a permanent rep.

Jeff Gilbert reported that there will be a \$50 gift card available for a Beads of Courage (BofC) bowl raffle. MCW members making and donating bowls for BofC, will receive a ticket for each bowl he/she makes. Then at the ice cream social in July, a winner will be drawn from the raffle tickets submitted. So good luck.

MCW's annual ice cream social/picnic will take place at Mike Colella's house on Sunday, July 14. Mike will send out an invitation, and RSVPs are asked for a week before the event. For the event to take place, at least ten people will need to respond.

MCW's Facebook link is <https://www.facebook.com/groups/194941367515051/> . Go there to view posts and/or join the group. We also have an Instagram page <https://www.instagram.com/mocowoodturners/?hl=en>

Please remember to support our hosts, the Woodworker's Club. It has been with us for a long time. If you need to purchase a tool or some new equipment, please consider getting it there.

Eliot Feldman won the bring back challenge and will have the next prize in hand for the June meeting.

Show, Tell and Ask was followed by a demonstration by MCW member Paul Paukstelis.

The MCW Business meeting adjourned at 9 PM

Respectfully submitted,

Mary Aronson

Future Programs 2024 – Looking Ahead (to be updated next month)

2024 Programs/Demonstrations [updated as of 1/7/24]		
Date	Demonstrator / topic	Demo type
February 8	Roberto Ferrer	
March 7	Denis Delahanty	
April 11	Chris Kunzle	
May 9	Paul Paukstelis - will demo his new home grown CNC system	Live
June 6		Liv
July 14	Picnic At Mike & Sue Colella’s yard	Picnic
August 8		
September 12	Annual Panel Critique	Live & Online
October 10	Club meeting	
October 12	Woodworkers Club Octoberfest - Saturday	
November 10		
December 12	Pot Luck dinner	live/potluck

DIRECT LINKS TO ONLINE PHOTOS - (For your viewing pleasure)

Note: All photo albums are captioned. Every photo has a caption. Depending on your platform, to see the captions look in the upper right. You should click or tap the circled “i” (which stands for “information”) or the three vertical dots and then select “information” from that menu. Enjoy.

MCW May 2024 Web Album Links List

MCW May ’24 Live Gallery: <https://photos.app.goo.gl/YG4Hb1QkYnFzthTW7>

MCW May ’24 Live Hybrid Meeting with ST&A: <https://photos.app.goo.gl/Bv7UnF4Y9bF9x3TV9>

MCW May ’24 Live Hybrid Program: <https://photos.app.goo.gl/yiS6kgTchQfsuqmC9>



Dear MCW members,

We are a member of the Creative Crafts Council (CCC), a consortium of twelve crafts guilds that sponsors one of the Washington area's premier craft shows every other year. The next CCC Exhibition will take place from Saturday March 15, 2025 through Saturday, May 31 2025 at the Mansion at Strathmore in North Bethesda, Maryland. Our guild strongly encourages you to submit your artwork for consideration for the Exhibition and now is a great time to start planning your submission.

Craft entries are welcome from members of sponsoring guilds (wherever they reside) and from any artist residing, studying, or working in Maryland, Washington DC, or Virginia.

The online show application entry system accessed on the Creative Crafts Council website will be open from Friday November 1, 2024 until 11:59 pm on Tuesday December 10, 2024. Please see the CCC website for more information about the CCC and its exhibitions <https://www.creativecraftscouncil.org>. The CCC website page for the 2025 Exhibition will be available in June 2024 with more information to help you get ready to apply.

Please contact me if you have any questions.

Keep Turning Safely,

Tim Aley

Bring-back Challenge (Gary Guenther)

It's nice to have a woodturned item in your collection from one of your friends.

Each month, we raffle off a piece by a Member, and the winner turns a piece of their own and brings it back to the next Meeting to have it raffled off, in turn. It's a fun, if random, way for us to trade our work.



At our May Meeting, for our renewed Bring-back Challenge program, Eliot lost another winning ticket, but found it on the floor and won the free drawing for a

CNC-Stubby-lathe-router-decorated cup turned and embellished by previous winner Paul Paukstelis. Paul demonstrated how he does this. Congrats to Eliot, seen here with his cool new box. He will bring back his own contribution to the May meeting.



Thanks to Paul and Eliot for participating.

You too can join in the fun. Just say “yes” to a free Bring-back Challenge raffle ticket at the June 2024 meeting, and maybe you’ll go home with Eliot’s work.

Show, Tell & Ask Gallery
May 2024

Richard Webster
natural-edge vessel
6" h x 7" w x 6" d
mulberry



Dick Ratcliff
footed bowl with marble
5-1/2" h x 14" w x 14" d
maple burl, walnut



Rick Ellsbury
platter
1-3/4" h x 12-1/2" dia.
black cherry



Jeff Struewing
nested bark-edge bowl set
7-1/2" h x 16-1/2" w x 12-1/2" d
250-year-old beech



Roman Steichen
short gouge handles
6" L x 1-1/2" w - olive



Roman Steichen
platter
2" h x 11" dia.
cherry
laser engraved



Roman Steichen
platter
2" h x 12-1/2" dia.
African mahogany
laser engraved



Tim Aley
castle bird house ornament
3-1/2" h x 3" dia.
cherry, acrylic paint, metal chain
wood burned



Tim Aley
vase
6" h x 5" dia.
walnut



Tim Aley
bowl
2" h x 5-1/2" dia.
spalted historic pecan
(Kathy Bryant via GG)



Tim Aley
bowl
2-1/2" h x 5-1/2" dia.
historic pecan
(Kathy Bryant via GG)



Tim Aley
bowl
3" h x 5-1/2" dia.
historic pecan
(Kathy Bryant via GG)



Joe Stout
hollow form with finial
6" h x 3-1/2" dia.
chechen burl



Joe Barnard
spurtle - maple
11-1/2" L x 1" dia.
(turned at Gas & Steam Show)



Joe Barnard
bowl 2" h x 8" dia.
corkscrew willow



Gary Guenther
Pueblo-style "seed pot" hollow form
2" h x 5-1/4" dia.
spalted, curly silver maple



Chris Burns
"woven" bowl/plate
1-1/2" h x 10-1/2" dia.
walnut, maple, canarywood, chechen,
bloodwood, pau rosa



Duane Schmidt
sculpture
10-1/2" h x 14" w
cherry, chestnut, darkheart tuliptree



Duane Schmidt
lidded bowl (box) for Beads of
Courage
7" h x 7" dia.
cherry, ceramic bead



Gary Guenther
bark-edge flare bowl
2-3/8" h x 6-1/2" w x 5-3/4" d
Bradford pear



Mike Colella
udder bowl
4" h x 8" dia.
red cedar, paint



Treasury report - June 2024 (Tim Aley)

Beginning Balance	\$6,553.34		
May Income 2024		May Expenses 2024	
Membership 2024	\$35.00	Membership Paypal fee	\$1.50
Future Membership	\$0.00		\$0.00
Lifetime Membership	\$0.00	Demonstrator Dinner	\$35.00
Dontation	\$0.00	CCC yearly dues	\$100.00
Ken Lobo Tool Sale	\$0.00		
Silent Auction	\$70.00	WWC Room Fee	\$75.00
Name Badge	\$0.00	Name Tag	\$0.00
Demo Fee	<u>\$0.00</u>	Paypal fee Donation	<u>\$0.00</u>
Total	\$105.00	Total	\$211.50
Ending Balance	\$6,446.84		



Members in the news

Paul Sandler	I also have some utility items for sale at the Something Earthy Pottery Studio at 24410 Hipsley Mill Road, Laytonsville, MD 20882, and I have submitted to the Black Rock show, but haven't heard back as yet.
William Flint	I also sell on Etsy. My shop name is UFOKing, the direct link is https://www.etsy.com/shop/UFOKing

Woodturning Fundamentals Learning Portal

Welcome to the world of woodturning!

New turners — this site is for you.

The world of woodturning is large, complex, and continually growing. In order to enter that world safely and confidently, you need to learn a few basics: How to sharpen your tools, how use the different tools properly, and above all how to work safely. This site is designed to point you to helpful articles and videos by some of the world's most talented and successful woodturners.

The menu buttons will take you to important areas of woodturning. Click on any button for a rundown of resources chosen with beginning turners in mind.

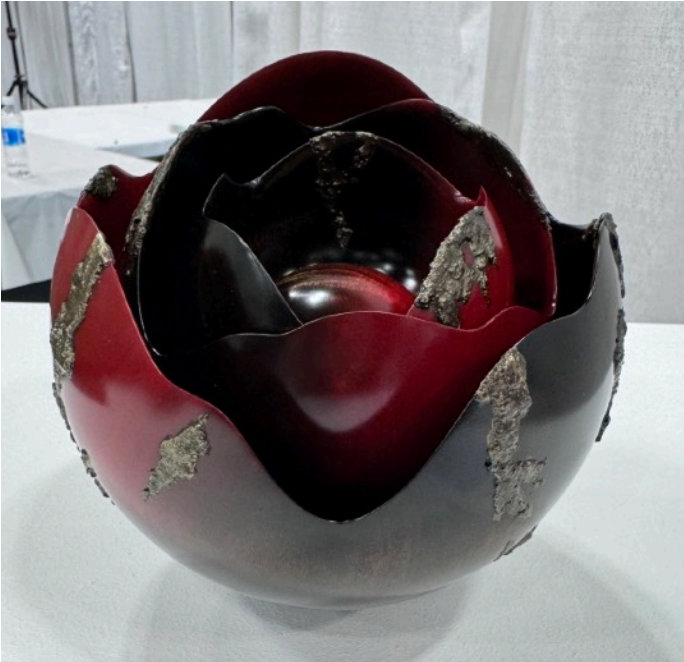
You may also want to go read the Learning Outcomes curriculum. It details the knowledge, skills, and attitudes needed to become a successful turner.

Also, like the larger world of woodturning, this site is continually growing, with new articles and videos added regularly. Come back often to see what's new.



AAW | OFFICIAL CHAPTER
AMERICAN ASSOCIATION
OF WOODTURNERS

More images from AAW Symposium



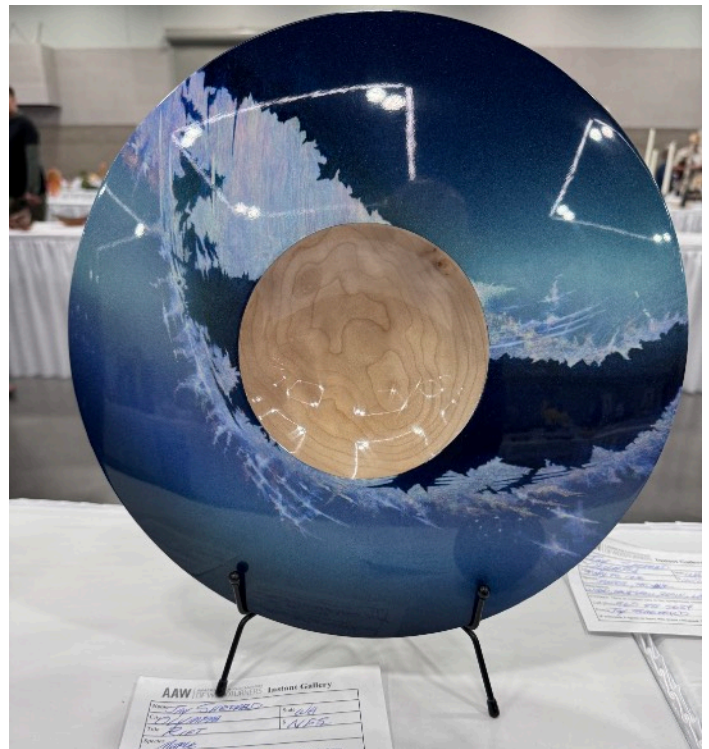
Eiko Tanaka, Japan



Christian Burchard, OR

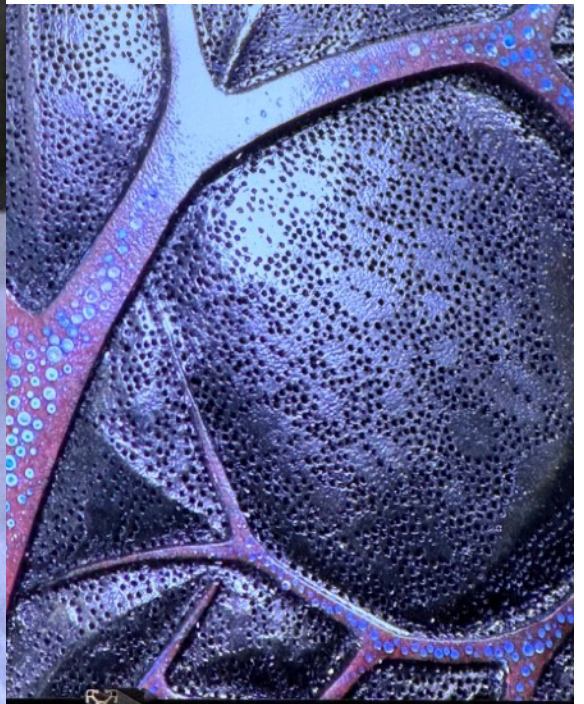


Heather Marusiak, KS



Jay Shepard, WA





Rally Munro, NZ



Rally Munro, NZ



Joe Barnard, MD

AAW and DID YOU KNOW...

Some good reasons you should belong to the AAW



AAW Explore! and VideoSource have been combined into one quick and easy search tool!

- **Locate woodturning articles, information, projects, and tips from AAW's complete archive of publications dating back to 1986.**
- **Search a wide selection of curated woodturning videos that have been pre-screened for quality content and safety.**

Shop Tips

AAW members have shared their favorite shop tips with us since 1986. To help members work faster and smarter in their own shops, AAW has an expanding collection of popular and useful tips. View our complete Tips collection (members only).

Membership has it's privileges!

World Connections - Links and other noteworthy places.

This page will be dedicated to useful and noteworthy links, Feel free to email me with suggestions: michaeljcolella@gmail.com

AAW: <https://www.woodturner.org/>

Arrowmont: <https://www.arrowmont.org/>

Women In Turning: <https://www.woodturner.org/?page=WIT>

The Woodworkers Club: [The Woodworkers Club](#)

MCW Facebook page: <https://www.facebook.com/groups/194941367515051>

AAW Photo Gallery: <http://www.aawforum.org/community/index.php?media/>

Worth checking out to see some amazing work.

Mark Supik: <https://www.marksupikco.com/>

Talking Turning: <https://www.awgb.co.uk/talking-turning-zoom-sessions/>

Wood Symphony Artists: <https://www.woodsymphony.com/wood-artists>

To Be Continued.....

Note:

As we all continue to find interesting demonstrators around the world, PLEASE let me know so I can post them here for everyone else to benefit.

Chapter Officers

Updated 1-8-2024

President	Joe Barnard
Vice President	Joe Stout
Treasurer	Tim Aley
Newsletter Editor	Mike Colella
Membership Chair	Steve Drake
Program Chair	Bill Bell
Secretary	Mary Aronson
Webmaster	Jeff Struewing

Volunteers

Wounded Warrior Support Program Director	Don Van Ryk
Public Library Exhibit Committee	Joe Barnard, Joe Stout assistant
Beads of Courage Program Director	Jeff Gilbert
Montgomery County Ag Fair Program Director	Tim Aley, Paul Sandler (assistant)
Turn for Troops Project Leader	Roman Steichen
Videography	Joe Stout, Joe Barnard, Mike Colella
Gallery Photography	Mike Colella
Candid Photography and Web Albums	Gary Guenther, Tim Aley
Show Tell & Ask Leader	Mike Colella
Show Tell & Ask Recording	Richard Webster
Activities Arranger	Tim Aley
Backup Secretary	Steve Drake

MCW Resources

Our Hosts: Our most important resource is our space. We are deeply indebted to our hosts, [The Woodworkers Club](#), for their continuing support in sharing their facility with us. Please give Amy, Chris, Matt, and Ralph your individual expressions of appreciation, both verbally and with your wallets. If you need something, they will get it for you, either off the shelves or from the catalog – with no shipping charge. Please help support them.

MCW Facebook Group: MCW has a private Facebook Group. Use it to post pictures of your work, ask questions, check out upcoming events, and it provides another venue for our members to get to know each other better. Go to <https://www.facebook.com/groups/194941367515051/> and request to be added to the group.

Silent Auction: Not everyone has access to a chainsaw or a band saw, which makes it nice to have access to reasonably-priced, properly-sized turning blanks. Please bring your 'road kill' to share with other Members.

Discounts: Steve Drake has assembled a selection of retailers who provide MCW Members with monetary discounts. First and foremost, of course, is the Woodworkers Club, but we have a number of others too. Please check out the list of participating merchants on the Web Site or at the end of each Newsletter.

Web Site: <http://montgomerycountywoodturners.org> Thanks to Webmaster Jeff Struewing we have an outstanding Web Site.

Newsletters: The MCW Newsletter Archive, accessible on the website, is a tremendous resource, containing the complete history of all MCW programs and activities from day one, as seen on a monthly basis through the years. All past issues back to Volume 1, Issue 1 in 2007 are available at <http://montgomerycountywoodturners.org/newsletters/>



Member Discounts

Woodworkers Club Rockville, Maryland (www.woodworkersclub.com). The Woodworkers Club, a Woodcraft affiliate, offers MCW Members a 10% rebate on all regularly priced items. After reaching certain plateaus of spending, you will become eligible for a rebate which you will receive by email and is good for 3 months. Non-qualifying items are power tools, items already on sale, gift cards, and items from companies that prohibit discounting (Festool, SawStop, Leigh, and a couple others). Our relationship with Woodworkers Club is very synergistic and important to us, and I encourage you to make your woodturning and woodworking purchases from them. If they don't have something in the store that's in the Woodcraft catalog or on their web site, they will get it for you, and you can save on shipping by picking it up at the store.

Exotic Lumber <https://www.exoticlumber.com/>

With over 130 species in stock, Exotic Lumber has one of the widest selections available on the East Coast. They offer a 10% discount to MCW Members with a membership badge. They are located in Annapolis where you are welcome to select from their extensive selection of turning blocks.

EXOTIC LUMBER

Frederick Lumber Company, Frederick, Maryland <https://www.fredericklumber.com/>

Frederick Lumber Company offers over 130 species of domestic and exotic hardwoods, with a showroom full of small boards and turning stock. They offer a 10% discount to MCW Members with a membership badge. They are located in downtown Frederick, where you are welcome to browse and select your own boards.



Craft Supplies USA www.woodturnerscatalog.com is a family-owned and operated business serving the woodturning community. Individual MCW Members can save 10% on all finishes & disc abrasives -- just mention "Montgomery County Woodturners" and save, all year long.



Hartville Tool (www.hartvilletool.com) is a nationwide retailer of general and specialized tools for woodworking and home improvement. They offer free shipping to all. If you have accepted the MCW offer to "opt in" to be a member of the Hartville Tool Club, you will get a 15% discount on all tools (excluding sale items, gift cards, special orders, and Festool Products)



North Woods Figured Wood (www.nwfiguredwoods.com) North Woods is a multi-generational family-owned supplier of wood and wood blanks specifically selected with the woodturner in mind. They specialize in Pacific Coast native species of trees and have sizes from single pen blanks up to 1,500 lb. whole burls. With 20+ species in stock, there is something for everyone. Members get a 15% discount by mentioning their MCW membership during a phone order or by entering "WOODTURNERS" as a coupon code during online ordering.





Chris Burns
"woven" bowl/plate
1-1/2" h x 10-1/2" dia.
walnut, maple, canarywood, chechen,
bloodwood, pau rosa