



OFFICIAL CHAPTER
AAW
 AMERICAN ASSOCIATION
 OF WOODTURNERS

MEETING LOCATION
Woodworkers Club
 11910 Parklawn Drive, Unit L
 Rockville, MD 20852

Party On!

Meeting Agenda

- 6:00 -6:30 - Log in or attend
- 6:30-6:50 - Business meeting
- 6:50-7:15 - Show Tell & Ask
- 7:15-8:45 - Program
- 8:45-9:00 - Clean up & Exit

Sunday July 12, 2026
Annual Picnic
and Ice Cream Social

Table of Contents

President's Perspective	3
Members in the News	4
Editor's Corner	5
June Meeting Minutes	6
This is Your Co-pilot	7
Bring-back Challenge	8
Last Month's Program	9
Future Programs	11
Direct Links to June Photos	11
Skills Enhancement	12
Treasurer Report	13
Back To Basics II	14
Show Tell & Ask	16
Thoughts on Raleigh	30
World Connections	33
Chapter Officers & Volunteers	34
MCW Resources	35
Member Discounts	36
Tailstock	37

Annual Summer Picnic
 and Ice Cream Social

It's Picnic time! We have been having a summer Picnic on and off for the past 18 years, thanks largely to Mike and Sue Colella who started it all and renewed it. This now traditional event will be our eighth and has also come to be our tenth Ice Cream Social. But who's keeping count? This is a family event; all are welcome.

Here is how it all began. You may even recognize a few of these people.



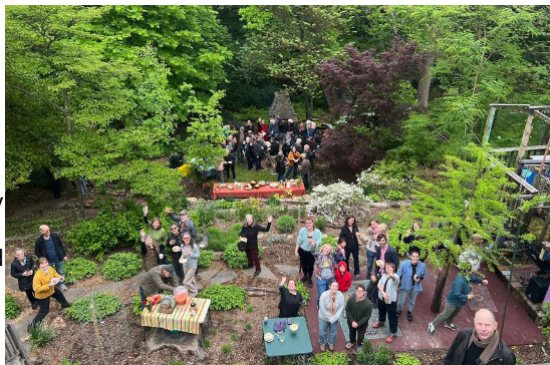
If you have had the pleasure of attending an MCW Picnic over the past 18 years, hosted by Mike & Sue Colella, then you know how much fun it can be, in their beautiful garden setting. Maybe you got a tour of Mike's workshop; it's always enlightening to see how another woodturner has things set up (and how many tools you now need!). The summer Picnic is a relaxing time to eat and drink and socialize with members and their families.

If you have never been to Mike & Sue's, then you will have to wait at least another year, because they are getting a break, and Jeff & Paula Struewing have stepped up to host this year. Their garden is different but lovely all the same. Why not come to your first MCW Picnic, or come to the first one hosted by Jeff & Paula. It's easy - just bring a side dish to share and all the rest is provided by the club (grilled items, drinks, and ice cream!).

It will run from 1-4 p.m. on Sunday, July 12, at 7011 Woodland Ave, Takoma Park. Jeff's cell 240-988-6422. If you have already rsvp'd to him (jeff@struewing.us) no need to do anything else, and if you haven't responded but want to come, drop him a note or just show up. We'd like to see as many of you there as possible.

Hypothesis: MCW members are friendly, welcoming, engaging, smart, interesting people. Proof: come to the Picnic and find out. This is your chance to meet your fellow members on a personal basis and chat about life and professions and travel and books and music and whisk(e)y and creativity and all those things that make life worthwhile. You will be surprised how little we talk about woodturning. :-)

We're giving Mike and Sue a break this year, so thanks to Jeff and Paula Struewing for stepping up. I can tell you that their back yard is a suburban bucolic marvel that you will thoroughly enjoy visiting. If you are already signed up, we look forward to seeing you. If you are not already signed up, I strongly recommend that you consider adding Sunday, July 12th, 1:00 p.m., at Jeff and Paula's house in Takoma Park to your calendar. Send them a reply of your intent and bring a dish to share. Everything else will be provided.



Hey, all you woodturners! I'm sure by now some of you have begun looking forward to our yearly Picnic. Some probably have not, but I'm about to change that: keep reading. Previous years, it's been at the Colellas in the quaint little town of Laytonsville. Just to mix it up, we've moved it to the wilds of Takoma Park (leave your nukes at home!) and the Struewings' home. It's a beautiful place and very comfortable to hang out there. You'll still be able to TALK about woodturning, and, horrors, other stuff. Significant others are expected. Maybe see Jeff's shop. This month we are omitting all that 'bringing in a demonstrator', 'Silent Auction', and the most awkward phrase ever that will never roll off of anyone's tongue, 'Show, Tell, AND ASK'. Just come, bring a dish, enjoy the grilling, some typical Wabash refreshments (a VERY inside joke: explanation will require attendance), and the requisite ice cream snacks.

Hope to see you there!



President's Perspective - Joe Barnard

Hello to MCW!

Like most years, we are not having a demonstration this month. Not to worry, though, we will still be seeing each other. There are really three events I need to talk to the club about.

First, obviously, the Picnic. Our Picnic is going to be at the Struewings' home in Takoma Park on July 12th. It runs from 1:00 to 4:00. We are expecting the drought to continue at least through that weekend, so no need to worry about rain. Jeff is encouraging everyone to bring a side dish. The club is providing grilled items, and after the main event, ice cream. Drinks will also be provided.



Secondly, even though there's no club business meeting in July, we are still having Skills Enhancement. That will be held on Friday, July 10th from 1:30-4:30. As always, cost is \$15 per member who attends. There will be volunteers to help you improve your skills. It is a casual and quite effective use of a few hours.

The third item doesn't actually occur during July, but rather through the beginning of August to near the middle of August: signup needs to happen during July. I'm talking about the Montgomery County Agricultural Fair. We will be demonstrating through the entire run of the Fair between the 14th and 23rd of August amongst the Old Timers at the end of the fairgrounds where we usually are -- as far from the noise and mayhem of the Midway as you can get and still be inside the confines of the fairgrounds. You'll know us because we share a big tent with the Montgomery County Carvers. They're the old timers, it'll be easy to tell. Take a look at the Aley spreadsheet to see which times we need people to turn. It's fun, you turn a little, you talk to people and explain what you're doing, you maybe hand them a MCW card and encourage them to come to a meeting. They will LOVE it. Their kids will ask you questions -- give them answers, and if we have some, hand out spinning tops. But mostly, turn. Practice something new. Watch some videos ahead of time, and try out some skew skullduggery. Go get some kettle corn. If you go to this link, you can sign up for times to turn and also let Tim know you need a free ticket (and Parking pass if you need one). The bus service is apparently being truncated quite a bit this year. (link follows)

https://docs.google.com/spreadsheets/d/11avwrxfilLwqVR_evooFLxrnwtIT-JBG14NvricKbM/edit?usp=sharing

Speaking of the Fair, if you're a Montgomery County resident, you can enter items into a variety of categories, and very likely get ribbons and actual real live dollars. Well, checks. There are a variety of categories your work can be entered into, and it will be judged and winners selected for each category. While each category is awarded ribbons, there are also overarching awards to acknowledge exceptional work, and also a juror's award. You won't get rich winning any of these awards: maybe as much as \$5 to \$7 can be awarded. Most awards are more like \$0.74.

I'll see you at the Struewings'.

Joe Barnard

===

I tried to come up with a carpentry pun that woodwork. I think I nailed it, but nobody saw it.



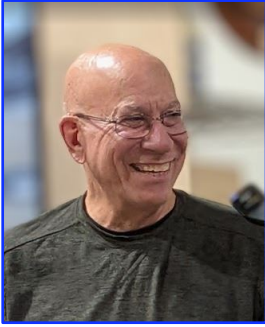
The worm that turned

Members in the news

<p>William Flint</p>	<p>My Etsy shop name is UFOKing The direct link is https://www.etsy.com/shop/UFOKing</p>
<p>Tim Aley</p>	<p>As always Artists on Market Gallery, 305 Main Street, Gaithersburg, MD</p>



Editors' Corner - Mike Colella & Co-Editor Gary Guenther



In our new collaboration, Gary and I will try to bring you new and different perspectives on our hobby/profession and the world we live in. If you have any requests or suggestions, please let us know.

July 12, 2026 PICNIC

How do you like that photo on Page 1? We've come a long way from our first Picnic in 2008. You will recognize a few familiar faces there, and, sadly, there are a few who are no longer with us. We honor them in our memories.

Sue and I would like to thank Jeff and Paula Struewing for giving us a needed break. They are terrific hosts and have a lovely space in Takoma Park that will serve us well for this year's Picnic. If you're not already planning to come, please give it a second look. It's party time. You will learn things about our fellow members that will astound you. We are much more than woodturners, and this is the venue for sharing that.

AAW Raleigh was a fantastic experience, as are all AAW Symposia. If you're not already a member of AAW (our national society, the American Association of Woodturners), I recommend very highly that you consider joining. There would not be an MCW if we were not an affiliate Chapter of AAW. Check out Joe Barnard's experiences in the pages below.

Hope to see you at the Picnic!



MCW June Meeting Minutes - Mary Aronson

The monthly meeting of the Montgomery County Woodturners (MCW) was called to order at 6:00 pm June 11, 2026 by club president Joe Barnard. There were 26 members and guests present.

Joe welcomed visitors and asked members to remember to wear their nametags. There are lots of new members, and they may not know everyone.

Skills Enhancement will be this coming Sunday, June 14 at 1:30. Please sign up with Duane Schmidt. Several experienced turners will be there to impart their versions of wisdom.

Joe Stout reported that the Warriors in Transition program was this last Friday and was a success. This continuing program could use more volunteer help than only Joe Stout and Jeff Gilbert can provide. Please give a hand on a Friday morning.

The annual MCW Picnic will be held this year on Sunday, July 12 at Jeff Struewing's home in Takoma Park, Maryland. Be certain to let him know if you plan to attend. Families are welcome. Please plan to come. We always have a great time.

About eight MCW members attended the annual AAW Symposium that was held in Raleigh, NC this year. Those attending had a generally good time. There was one complaint about the lack of seats in several of the rooms where demonstrations were being held. AAW will be sending a survey out to those who attended.

The Bring-back Challenge was won by John Laffan. Last month's winner was Joe Barnard who presented John with a small walnut bowl with a decorated rim.

Nine members participated in Show Tell & Ask, bringing an assortment of bowls and other objects.

Tonight's demonstrator is Pat Carroll from Ireland by way of North Carolina.

The business meeting ended at 7:02 pm.

Respectfully submitted, Mary Aronson
MCW Secretary



This is your Co-pilot - Gary Guenther
...what's in this issue and tips of current interest...

We may be taking a summer meeting break in lieu of our annual Picnic, but this *Turning Journal* newsletter is bigger and better and chock full of good stuff.

Read about our Picnic venue this year and be sure to sign up and join us, with your family, for a great afternoon of food and camaraderie.

Be sure to click on some of those web album photo links and take a look at our last meeting and great demo by Pat Carroll (the former also highlighted by our *Bring-back Challenge* page, immediately below, and the latter brought to life in the following *Last Month's Program* pages). He's the real deal.



Kent Weakley gives us some great experience and tips in a 17-minute video regarding endgrain tearout in *Back to Basics II*, and he provides some good articles written for those of us who like to read as well.

Our Gallery pages highlight work that was brought last month for *Show Tell & Ask*. And, yes, we really would like you to ask a question of the audience to get a discussion going -- that's how we share and learn, per Bill Long.

This month, a bonus, illustrated feature article was provided by Joe Barnard about his experiences at AAW Raleigh.

In *Tailstock*, we celebrate the diversity of the bark-edge bowl form, and, surprisingly, both ends of the spectrum come from the tools and inspiration of just one of our long-time member turners. These two forms could not be more different, and yet they were done by the same person with a broad range of sensibilities, Richard Webster. He is particularly pleased with the "perfect" balance he achieved in the classic form, and yet he glories in the rough, wild nature of the other one as well. There's a lot for us to learn here by understanding and appreciating these two forms.

Our page fillers this month are more suiseki viewing stones, these all from the private collection of none other than Mike Colella, who is clearly an afficianado. There was a good show on suiseki on PBS last month -- it can be streamed. Enjoy!



Bring-back Challenge - Gary Guenther

It's nice to have a woodturned item in your collection from one of your friends.

Each month, we raffle off a piece by a Member, and the winner turns a piece of their own and brings it back to the next Meeting to have it raffled off, "in turn". It's a fun, if random, way for us to trade our work

At our June Meeting, our Bring-back Challenge free raffle drawing was made by demonstrator Pat Carroll (without looking) from a bowl held by President and donor Joe Barnard. John Laffan's ticket was drawn. Congrats to John, seen here accepting a small, decorated bowl (Not a Tiny Turning) done by Joe in the style of January's demonstrator, "Tiny Turner" Emma Cook. John is pleased to add this new work of wood art to his collection.

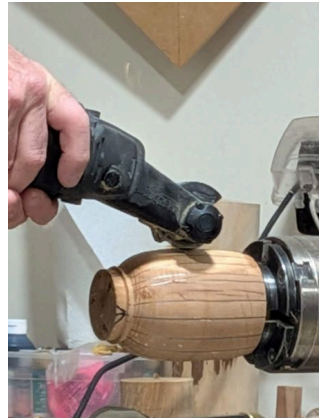
With his win, John has once again accepted the Challenge to make a contribution of his own to share and will bring it back for the next lucky winner at our August meeting (because July is the Picnic), where you, too, can win it if you play. Get a free ticket to join in the fun, and you may go home with an interesting piece made by John (will it be carved?) and have the privilege of bringing something of your own back to share in September. Thanks to Joe and John for sharing their turned work.

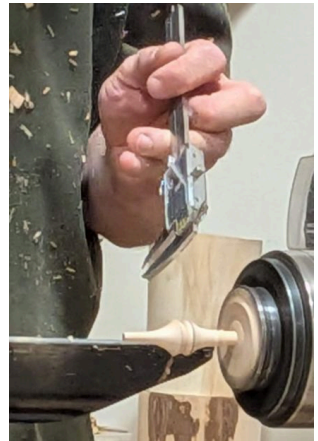


Last Month's Program - Gary Guenther

We were privileged in June to have world-renowned woodturning personality and highly-skilled and prolific woodturner Pat Carroll demonstrate for us. Thanks to Program Chair Bill Bell for his hard work in arranging Pat's visit in conjunction with other local clubs. Thanks, too, to Charles Daniels from Catoctin Area Turners for yeoman service in acting as Pat's chauffeur around our area. Pat's home is in Ireland, but he is staying in the North Carolina for 18 months to enjoy the many opportunities here. He is making good use of them.

The MCW Board picked this footed, carved vessel from Pat's long list of possible demos. Good choice. We got it colored too! This project showcased design elements as well as both spindle and bowl turning techniques, and Pat showed us a wide range of tools for turning and texturing along with some witty repartee. We thoroughly enjoyed his visit and hope to be able to have him back again next year.





Future Programs 2026 - Bill Bell

July	Annual Picnic July 12	In person
August	Jeff Struewing lanterns	In person
September	17th-Annual Panel Critique	In person
October	TBD	
November	TBD	
December	Annual Holiday Potluck Dinner with Extended Show Tell & Ask and Tools Tips & Tricks	In person

Direct Links To Photos (For your viewing pleasure)

Note: All photo albums are captioned. Many photos have captions. Depending on your platform, to see the captions look in the upper right. You should click or tap the circled "i" (which stands for "information") or the three vertical dots and then select "information" from that menu.

Please enjoy visiting or reviewing our activities, and look back at earlier ones.

MCW June '26 Web Photo Albums Links List

MCW June '26 Gallery:

<https://photos.app.goo.gl/FMvHgnXNihAQQ94F8>

MCW June '26 Meeting and ST&A:

<https://photos.app.goo.gl/pCcujuqL6L9XVEXJ7>

MCW June '26 Program – Pat Carroll:

<https://photos.app.goo.gl/zQsnRjeC52EzoRh7>



Skills Enhancement Workshop - Duane Schmidt

Skills dates for 2026

Friday, January 9

February 15, Sunday

March 13, Friday

April 3, Friday (cancelled)

May 8, Friday

June 14, Sunday

July 10, Friday

August 9, Sunday

September 11, Friday

October 11, Sunday

November 13, Friday

December 13, Sunday

These dates will avoid the AAW Symposium, July picnic, and August MoCo Ag Fair. If you see any other major conflicts, please tell me.

Quick Summary of Skills Enhancement Workshop sessions:

Hands-on time using the Woodworkers' Club lathes to work on any turning project you would like, with experienced turners present to help out when folks want help. Sharpening systems are available. There is a cost, of \$15, for the 3-hour time. Bring your own tools or you can use Woodworkers' Club tools. Bring your own wood or let us know and we can provide wood.

The July session will be **Friday, July 10, 1:30-4:30 p.m.** at the Woodworkers Club, aka Woodcraft of Rockville. If any experienced club members are interested and available to serve as mentors for this session, please let me know. And let me know if you might be interested but have questions. The sessions are relatively casual, not too structured, providing advice, demonstration, instruction as much as the attendees need. There is plenty of space available at this time. If you would like to attend, please let me know. And please ask if you have any questions.

Thanks,
Duane Schmidt
Skills Enhancement Coordinator



Treasurer Report - *Tim Aley*

Beginning Balance	\$5,890.45		
Beginning Balance		May Expenses 2026	
Membership 2026	\$0.00	Membership Paypal fee	\$0.00
Future Membership		CCC fee	\$100.00
	\$0.00	Lathe Lights	\$53.69
Donation	\$0.00	Demonstrator fee	\$458.00
Skills Enh. Fee	\$45.00	Demonstrator dinner	\$71.70
	\$0.00	WWC Room Fee Skills	\$150.00
Silent Auction	\$20.00	WWC Room Fee	\$0.00
Name Badge	\$0.00	Name Badge	\$0.00
Demo Fee	<u>\$254.03</u>	Paypal fee Donation	<u>\$3.20</u>
Total	\$319.03	Total	\$836.59
Ending Balance	\$5,372.89		



Twin Peaks



Back to Basics II - Gary Guenther

One of MCW's prime directives is education. We have inexperienced turners who can use some guidance, and even experienced turners can benefit from an occasional refresher.

“Turn a Wood Bowl” series by Kent Weakley

Kent Weakley is a woodturner who had created a large collection of video tutorials on his YouTube channel “Turn a Wood Bowl”. His videos, courses, and website provide extensive instruction for turning a wood bowl. If you are new to woodturning, an effective way to learn is by combining Kent’s free YouTube videos with his website content. His channel is organized into playlists that cover specific topics, which can help guide you through the process. You can do it on your own, but here I’ll do the organizational work for you and give one or more to you each month. Let’s dive right in.



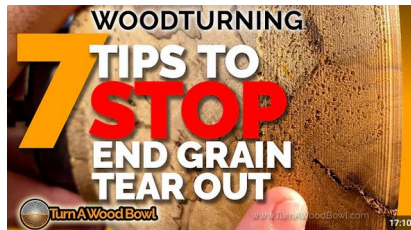
Kent’s website: <https://turnawoodbowl.com/about/>

Sadly, the typeface is very difficult to read on my monitor. Your Mileage May Vary.

Kent’s YouTube Channel: <https://www.youtube.com/c/TurnAWoodBowl>

===

Last month we talked about lathe speed. I think it’s good to continue some basic, important lathe and tool techniques as they pertain to a very common problem, so I’m going to delay the discussion of crotch bowls until next month. This month, let’s hear what Kent has to say about how to avoid endgrain tearout in bowls. It’s not a simple thing. Kent gives us seven things to think about in 17 minutes; time very well spent. Many of his items are worthy of full videos in their own right (which he has done). If you prefer reading, he also includes some articles he has written. Check it out.



7 Tips to STOP end grain tear out in wood bowl woodturning

<https://www.youtube.com/watch?v=jkZdkmH0ZTU>

Sorry about the crap at the beginning; you just have to wait it out... and the ads inside. :(

Kent says:

Tear out can be a huge issue and create all kinds of frustration. Not to worry, these 7 Tips, if followed in order will take care of at least 95% of all tear-out problems when turning wood bowls.

Tear out on wooden bowls occurs most at the end-grain portions of the bowl. The long fibers of end-grain can become weak and brittle over time and they are not easy to cut cleanly.

Woodturning bowls and tear-out are very common, but you will now have the skills to eliminate this issue once and for all.

I shouldn't do this, but I'll give you a hint of what his seven items are – you still want to watch him talk about them! 1) sharp tools; 2) grain direction, supported cuts; 3) riding/ floating the bevel; 4) lathe speed; 5) speed of your cut; 6) depth of your cut; and 7) use a sealer to tighten dry grain.

Want to learn more about end-grain tear-out?

Read this **article**: <https://turnawoodbowl.com/14-ways-to-...>

Related **Articles** to Read and Explore later:

- Supported Grain Direction Cut – <https://turnawoodbowl.com/supported-c...>
- Riding the Bevel – <https://turnawoodbowl.com/riding-the-...>

There's a lot of great experience and information here. Watch, read, and enjoy.



Desert stone



Show Tell & Ask Gallery June 2026

Richard Webster
bark-edge bowl
7" h x 12" w
walnut



Richard Webster
bark-edge bowl
6" h x 12" w
walnut



Rick Ellsburry
hollow form
3" h x 8" dia.
wood unknown



Rick Ellsbury
shallow bowl
2" h x 7" dia.
Eastern red cedar



Jeff Struewing
sea urchin box
2-1/2" h x 2-1/2" dia.
cherry
in the mode of
Neil Turner



Joe Barnard
ladybird beetle box
4-1/4" h x 3-3/4" dia.
walnut, holly,
redheart, ebony



Joe Barnard
decorated bowl
3" h x 4-1/4" dia.
walnut, paint



Gary Guenther
final bowl box
2-3/4" h x 7" dia.
osage orange,
walnut,
black locust



Paul Paukstelis
finialed lidded bowl
4-1/2" h x 6" dia.
cherry, maple, cherry
fluting and finial by
LatheEngraver



Roman Steichen
platter
1-1/2" h x 9" dia.
cherry, resin



Roman Steichen
four ice cream
scoops
1-1/2" x 10"
stabilized maple,
resin



Roman Steichen
four pens
stabilized maple,
resin



Roman Steichen
pizza cutter
1-1/2" x 10"
resin



Roman Steichen
cheese plane
1-1/2" x 10"
claro walnut



William Flint
bowl
4-1/2" h x 12" dia.
mimosa



David Mayer
vase
7" h x 5" dia.
purpleheart, oak



David Mayer
bowl
5" h x 7" dia.
pear



Thoughts on AAW Raleigh this year - Joe Barnard

I think a significant, though not particularly great thing, did happen at AAW. One demonstrator, Matt Monaco, had all of his demos canceled because he refused to wear any sort of protective gear -- no face shield, no glasses, nothing. AAW said, bu-bye. There was just no appropriate reason for him to have that attitude. He had to know that such a demo would put the AAW at risk of lawsuits. I think anyone who's ever been whacked in their face shield with a piece of wood at 50mph likely understands the AAW position. Don't ask me how I know. (And the Co-Editor concurs. I know that sound! WHACK!)

Panels

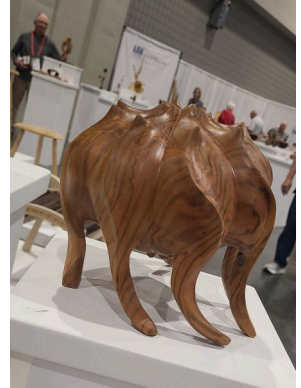
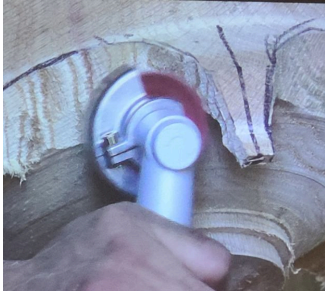
The ability to attend Panels composed of expert participants is one of the real benefits of going to a Symposium in person. I went to a couple of sessions with Panels about submitting work to various exhibitions and also about giving presentations. I'll only briefly comment that last year when Tim Aley and I were "woodworking experts" for the Creative Craft Council Strathmore Exhibit (note: applications for the 2027 show coming this December), we saw the jurors emphasizing that the quality of the *photography* was of *critical* importance in preparing an application. The Panel I watched at AAW said much the same thing. One of the panelists (Janine Wang) said something that really reiterated the point to me -- she said that you should take your photos of work *as you complete it*; if you're taking photos on the deadline for an exhibition, you're at least a month late. The same is true for all your "Artists Bio" and "Artists Perspective" portions of the entry. Worth considering.

Demos

Turning bowls with feet by Matthew Shewchuk

This idea has led me to buy new equipment, and is in the middle of causing me to start over on a job from last year where I was going to make an octopus teapot. The gist of it is that you essentially turn a pair of bowls from the same piece of wood, which are attached to one another by their bases. The top bowl is just that. The bottom bowl, though, is shaped to the contour of the outside of the desired legs, and the inside is shaped to the contour of the inside edge of the legs. Then you use

carving tools and sanding tools to extract and shape your legs -- however many you want. I'll have 8, cut off and flip the 7th to be my handle, and cut off the 8th to flip vertically as my spout. Current plan, at least.



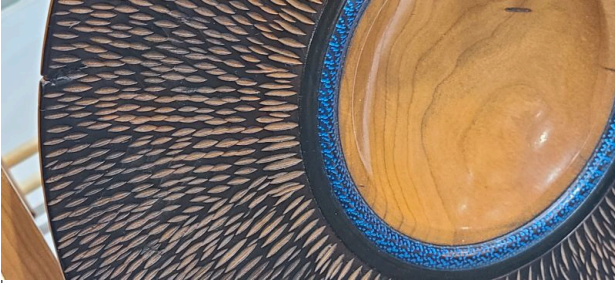
Multiaxis turning goblet by Joe Larese

I was surprised that they essentially just tilted the piece in the chuck to get the second axis. It works, and I reckon that's because the turning they do on that second axis is a curve rather than a straight up and down segment. They also make sure that the bowl of the goblet is all on the center axis. I found the view pretty cool too, the way you can see the half-invisible portion as it turns.



Instant Gallery

Like every year, the Instant Gallery was filled with fantastic work from all over. I've included just a few pictures below of work that struck me as notable.



Trade Show

Our own Paul Paukstelis had his LatheEngraver set up for viewing and use and sales.



World Connections - Links and other noteworthy places.

This page will be dedicated to useful and noteworthy links.

Feel free to email me with suggestions: michael.j.colella@gmail.com

AAW: <https://www.woodturner.org/>

Arrowmont: <https://www.arrowmont.org/>

Women In Turning: <https://www.woodturner.org/?page=WIT>

The Woodworkers Club: <https://woodworkersclub.com/>

MCW Facebook page: <https://www.facebook.com/groups/194941367515051>

AAW Photo Gallery: <http://www.aawforum.org/community/index.php?media/>

Worth checking out to see some amazing work.

Mark Supik: <https://www.marksupikco.com/>

Talking Turning: <https://www.awgb.co.uk/talking-turning-zoom-sessions/>

Wood Symphony Artists: <https://www.woodsymphony.com/wood-artists>

Worldwide Woodturners: <https://www.worldwidewoodturners.org>



Chapter Officers

President	Joe Barnard
Vice President	Joe Stout
Treasurer	Tim Aley
Newsletter Editor	Mike Colella
Membership Chair	Steve Drake
Program Chair	Bill Bell
Secretary	Mary Aronson
Webmaster	Jeff Struewing
President Emeritus	Bob Anderson

Volunteers

Skills Enhancement Coordinator	Duane Schmidt
Warriors in Transition Leader	Joe Stout
Beads of Courage Director	Jeff Gilbert
MoCo Ag Fair Coordinator	Tim Aley
Turn For Troops Coordinator	Roman Steichen
Women in Turning Liason	Dori Reissman
Computer and Videography	Paul Paukstelis, Rick Ellsbury, Joe Stout
Computer and Videography (cont.)	Scott Bleakney, John Laffan, Mike Colella
Gallery Photography	Mike Colella, David Loeffler, Tim Aley
Candid Photography and Web Albums	Gary Guenther, Tim Aley
Show Tell & Ask Leader	Mike Colella
Show Tell & Ask Recording	Richard Webster
Activities Arranger	Tim Aley
Backup Secretary	Steve Drake
Newsletter Co-Editor	Gary Guenther



Layers



MCW Resources

Our Hosts: Our most important resource is our space. We are deeply indebted to our hosts, The Woodworkers Club, for their continuing support in sharing their facility with us. Please give Tosin and the team your individual expressions of appreciation, both verbally and with your wallets. If you need something, they will get it for you, either off the shelves or from the catalog – with no shipping charge. Please help support them.

1. MCW Facebook Group: MCW has a private Facebook Group. Use it to post pictures of your work, ask questions, check out upcoming events, and it provides another venue for our members to get to know each other better. Go to <https://www.facebook.com/groups/194941367515051/> and request to be added to the group.
2. Silent Auction: Not everyone has access to a chainsaw or a band saw, which makes it nice to have access to reasonably-priced, properly-sized turning blanks. Please bring your 'road kill' to share with other Members.
3. Web Site: <http://montgomerycountywoodturners.org> Thanks to Webmaster Jeff Struewing we have an outstanding Web Site.
4. Newsletters: The MCW Newsletter Archive, accessible on the website, is a tremendous resource, containing the complete history of all MCW programs and activities from day one, as seen on a monthly basis through the years. All past issues back to Volume 1, Issue 1 in 2007 are available at <http://montgomerycountywoodturners.org/newsletters/>
5. Discounts: Steve Drake has assembled a selection of retailers who provide MCW Members with monetary discounts. Please check out the list of participating merchants on the Web Site or at the end of each Newsletter.



Member Discounts

EXOTIC LUMBER

Exotic Lumber <https://www.exoticlumber.com/>

With over 130 species in stock, Exotic Lumber has one of the widest selections available on the East Coast. They offer a 10% discount to MCW Members with a membership badge. They are located in Annapolis where you are welcome to select from their extensive selection of turning blocks.

Frederick Lumber Company,
Frederick, Maryland

<https://www.fredericklumber.com/>



Frederick Lumber Company offers over 130 species of domestic and exotic hardwoods, with a showroom full of small boards and turning stock. They offer a 10% discount to MCW Members with a membership badge. They are located in downtown Frederick, where you are welcome to browse and select your own boards.



Flowers



Jaws



Tailstock



Richard Webster
bark-edge bowls
7" h x 12" w
6" h x 12" w
cherry, walnut